



# LOWER PROVIDENCE *Township*

March 2005

## A Safer Solution

We've all seen them. And we've all wondered about them. In fact Lower Providence Supervisor James Dougherty noted, "I've received many phone calls from concerned residents specifically asking what are those white lines that mysteriously appear on Lower Providence township roads and why are they there?"

The "lines" are evidence of a highly effective anti-icing technology being used by Lower Providence Township to keep snow and ice off township roadways. The Township has been treating its roads in advance of ice and snowstorms with a salt brine solution. Applicators, mounted on trucks, spray the mix of water and salt onto roads, creating the now-familiar lines. The water evaporates out of the brine solution, leaving behind a salt residue, which prevents ice and/or snow from bonding with the road surface.

In a winter that has seen above-average snowfall, the salt brine has proven to be a valuable tool in the Township's effort to maintain safe roads for its motorists. The brine is an efficient, economical, and time-saving way to help melt snow and ice. And, the innovative technology allows the Township to get the jump on bad weather; the brine solution can be applied up to 72 hours before the snow starts to fall.

Continued on page 3.

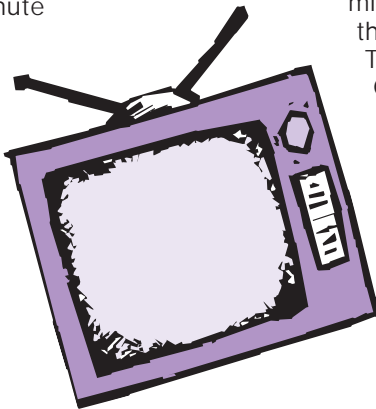


Lower Providence Director of Public Works, Dave Shaffer and Supervisor James Dougherty discuss the operation of the brine solution delivery mechanism on the public works vehicle.

## Lower Providence Community Access Channel

It's now easier than ever for Lower Providence Township residents to get up-to-the-minute community information, Township news, and Methacton School District announcements – the information is as close as their television set.

The Lower Providence Community Access Channel made



its debut March 1 and marks another step forward in the Township's commitment to providing its residents the best technology has to offer. The new channel airs on Comcast Cable Channel 3 and is up and running 24 hours a day, 7 days a week. It is available to all Township cable subscribers and subscribers who live in the Methacton School District.

Members of the Board of Supervisors, both past and present, laid the groundwork for the project. In

December 2003, the Township signed a Franchise Extension Agreement with Comcast, which provided for one Educational Government Channel. It was the hiring of Township Manager, Joseph Dunbar, in June of 2004, however, that kick-started the process to make this vision a reality, by coordinating township, school district and Comcast personnel.

The channel features a continuous listing of community events, School District announcements, and Township information. In addition, residents can tune in to check on the latest weather conditions and Associated Press headline news,

Continued on page 8.

# Gabriel's Field Addition To Open Space Resources

As part of its ongoing commitment to preserve open space within the Township, the Board of Supervisors has recently acquired 31.72 acres of land from St. Gabriel's Protectors in a 30-year lease agreement. The Board signed a nominal \$1 fee for the 30-year lease, making it possible for the Township to add to its open space program at virtually no cost to taxpayers.

This acquisition is the latest in the Board of Supervisors' continuing effort to maintain the Township's land reserves. Supervisor James Dougherty, liaison to the Lower Providence Park and Recreation Board commented, "The lease enables the Township to meet the residents' desire for fiscal responsibility and open space preservation. A commitment to protect open space is an investment in our future. Environmental responsibility and economic development go hand-in-hand. Planning and preservation protect the quality of life and the township's character."

Marie Altieri, a member of the Lower Providence Planning Commission added, "Open space is a rare find today and yet such a critical piece of our community and environment. We are fortunate to have the



James E. Dougherty, Lower Providence Township Supervisor and liaison to the Park and Recreation Board describes the expanse of the Gabriel's Field open space. Standing in Gabriel's Field with Supervisor Dougherty from left to right, is Warren Schlack, Lower Providence Planning Commission Chairman, Michael Siegel, Lower Providence Director of Planning and Zoning, Marie Altieri, Lower Providence Planning Commission member, Thomas M. Heisner, Lower Providence Park and Recreation Board Chairman, and Kelly Donohue, Lower Providence Parks and Recreation Supervisor.

## Published by the Board of Supervisors:



## LOWER PROVIDENCE TOWNSHIP

### Board of Supervisors:

W. Douglas Hager  
Chairman

Craig Dininny  
Vice Chairperson

James E. Dougherty

Piero Sassu

John Lomire

---

Joseph C. Dunbar, C.P.M.  
Township Manager

William Roth  
Newsletter Editor

open space that we do own in our township, including the bonus of Valley Forge and Evansburg Parks. I am grateful for the open space committee and their commitment to protect and preserve our existing ground and their diligence in trying to identify new opportunities to increase and balance the open space throughout the township."

Tom Heisner, Park and Recreation Board Chairman added, "The Park and Recreation Board is very excited about the acquisition of the open space from St Gabriel's. Our existing open space is utilized for the use of our residents with the highest demand being athletic fields for the various youth athletic organizations. The proximity of this land to the county bike trail entrance makes this a perfect fit for active and passive recreational needs of the township residents. The board looks forward to seeing the results of the mail-in survey, as well as working with the Board of Supervisors in developing this open space."

The Township is now turning to its residents for ideas on how the space should be used. (See survey form below) Resident involvement will help Township officials formulate plans for this site and assess future recreational uses of each open space parcel.

The 31.72 acres are located on the north side of Pawlings Road, adjacent to a parking area for the county's bike/walking trail. The tract is predominantly a flat, grassy area ideal for a wide-variety of active and passive recreational uses.

In addition to completing the mail-in survey attached to this newsletter, residents also are encouraged to send their comments to the following Lower Providence email address, [OpenSpace@LowerProvidence.org](mailto:OpenSpace@LowerProvidence.org). Comments received will be shared with the various boards and staff, including the Township's Open Space Committee.

Last December, the Board of Supervisors appointed seven members to the Township's Open Space Committee. The Committee was charged with reviewing and revising the Township's existing Open Space Plan. In addition, the members are completing an inventory of current land resources and making recommendations on future needs.

The Committee meets approximately once per month at the Township Building and residents are invited to attend. Please check the Township's website, [www.lower-providence.org](http://www.lower-providence.org), or its new Community Access Channel (Comcast Cable Channel 3) for a list of upcoming meetings.

## A Safer Solution (continued)

The Township utilizes two applicators to spray the brine solution, targeting primary roads, curves, hills, and intersections. The Public Works Department makes its own brine solution by mixing water and regular granular salt in a hopper. The solution is stored in a 10,000-gallon tank.

Supervisor Dougherty notes, "In the past, this technology has been used primarily by larger municipalities such as cities and states. The Board of Supervisors has commended the Lower Providence Public Works Department for the job they do keeping our roads open and safe. A major reason for this is the road department's continued effort to stay abreast of modern techniques in their field."

Dave Shaffer, Director of Public Works for the Lower Providence Township, adds "We are very happy with the results of its use during the winter season. The use of brine has made our Township roadways safer for the motoring public."

As an added bonus, Shaffer noted, salt brine is the most cost-effective anti-icing and de-icing product in the snow and ice industry. The use of brine can dramatically cut the cost of maintaining a safe roadway over conventional salting. Shaffer explained that salt could bounce or blow off the road surface at the beginning of a storm. The ability to apply the brine ahead of a storm prevents this from happening.

The support of the Lower Providence Board of Supervisors has been instrumental in adding this new ice-fighting weapon to the Township's arsenal, with Supervisor Jim Dougherty working closely with Shaffer and the Public Works Department.



Plow truck applies application of brine solution on Church Road

## Police Sergeant Honored For Thirty Years Of Service



Chairman Doug Hager, with Sergeant Siuchta and Police Chief Francis J. Carroll, reads the proclamation honoring Sergeant Siuchta for his 30 years of service.

On February 17, 1975, Stanley J. Siuchta took the oath of office for the position of police officer with the Lower Providence Township Police Department. Thirty years later, to the day, Siuchta was honored by the Lower Providence Township Board of Supervisors at their regular meeting on Thursday, February 17, 2005 with the presentation of a gift certificate and a resounding round of applause from the Board, members of the Police Department and the residents in attendance.

Sergeant Siuchta graduated from St. Matthew's High School in Conshohocken, PA in 1965. He began his involvement in law enforcement in May of 1968 as a part-time police officer with the West Conshohocken Police Department. In October 1968 he became a dispatcher with the Montgomery County Radio Room and was subsequently promoted to the position of shift supervisor. After his appointment to the Lower Providence Township Police Department, he attended the Montgomery County Police Academy, graduating in May of 1975. He was promoted to the rank of Sergeant on May 28, 1984.

Continued on page 4.

## Police Sergeant Honored For Thirty Years Of Service (continued)

In the course of his tenure with the Lower Providence Township Police Department, Sergeant Siuchta has received numerous letters of commendation and a Distinguished Unit Citation. He was instrumental in implementing the Lower Providence Township Police Department Dispatch Center in 1982 in order to provide direct dispatch services to our residents. He is a graduate of the Pennsylvania State University Police Supervisor In-Service Training Program, the Pennsylvania State University Executive Development Program, and the Command Institute for Police Executives. Sergeant Siuchta distinguished himself as being among the one-percent of law enforcement officers to graduate from the Federal Bureau of Investigation National Academy in Quantico, Virginia in the 181st Session in 1995.

Sergeant Siuchta joins Detective Sergeant Daniel F. McCabe, who will mark thirty-three years of service to the Township later this year, as the two members of the Police Department with over thirty years of service to the community. Their longevity not only speaks of their dedication and devotion to their profession, but also their personal and professional commitment to the betterment of Lower Providence Township.

## Lower Providence Bicentennial Art Show

Lower Providence Township is sponsoring a Bicentennial Art Show to highlight the life, land, history, culture, and architecture of our community. All subjects will be considered, however, because this is a significant time in our history, special preference will be given to works of art reflecting Lower Providence Township's past, present and future. The Lower Providence Art Show is scheduled for public access Thursday April 21 through Sunday April 24 at Mill Grove at the Audubon Wildlife Sanctuary. The Art show is open to all artists. Cash awards and prizes totaling more than \$1,200 will be awarded. The judge for the art show is Jim McFarlane, AWS, a teacher and lecturer, Jim McFarlane is a well-known area artist who has had work selected for numerous books and magazines articles. In both 2002 and 2003 he was awarded Best of Show in the Philadelphia Water Color Society's International Annual Exhibition. His work is represented in many corporate and private collections.

### Art Show Location

Mill Grove at Audubon Wildlife Sanctuary  
Pawlings & Audubon Roads  
Audubon, PA 19403

### Artists Receiving Schedule

Tuesday, April 19th 3:00 PM to 7:30 PM

### Art Show Public Schedule

Thursday, April 21, through  
Sunday April 24, 2005

Thursday - Saturday 10:00 AM to 4 PM Sunday - 1:00 PM to 4:00 PM

### Art Categories

Oils, acrylics and mixed media –  
not under glass

Watercolors, acrylics, & mixed media – under glass

Graphics – drawings, prints, pastels  
& photographs

Sculptures  
Wall Hangings  
Textiles

### For Further Information and Prospectuses

Please call 610-539-8020 or write:

Lower Providence Township  
100 Parklane Drive  
Eagleville, PA 19403

Email: [admin@lowerprovidence.org](mailto:admin@lowerprovidence.org)

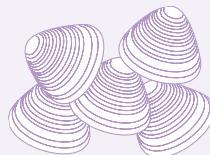
## Bicentennial Recipe Contest

The Lower Providence Bicentennial Committee is sponsoring a recipe contest and a bicentennial cookbook for 2005. The contest is open to Lower Providence residents only. The recipes must be original and not have been previously published. We encourage favorite old family recipes that have been handed down from generation to generation. If your recipe has a significant story surrounding its creation or history, you are welcome to share this information. There will be cash awards of \$100, \$50, and \$25 for first, second, and third place winners in each category. Three renowned local chefs will do the judging.



### The six categories are:

Appetizers and Soups  
Side Dishes  
Entrees: Meat and Poultry Dishes  
Entrees: Fish, Vegetable, and  
Pasta Dishes  
Breads, Cakes and Cookies  
Pies and other Desserts



To enter, please submit your typed entry on an 8 1/2" x 11" sheet of paper; please use exact measurements and instructions for each recipe, include the category and your name, address and phone number. You may enter as many recipes as you wish, but only one per sheet of paper. Your entry becomes the property of Lower Providence Township and may be published in our Bicentennial Cookbook. Deadline for submissions is 5PM, Friday April 29th, 2005.

Submissions may be dropped off at the Township Building or mailed to:

Lower Providence Township  
Recipe Contest  
Attention: Rick Brown  
100 Parklane Drive  
Eagleville, PA 19403



## Methacton Youth Aid Panel Serves Our Community

The Methacton Youth Aid Panel was launched in May of 2005 and has been instrumental in addressing minor offenses committed by juvenile offenders in the Lower Providence community.

The Youth Aid Panel consists of citizen volunteers that completed a fifteen-hour training course over a five-week period. The panel operates under guidelines established by the Montgomery County District Attorney's Office, which oversees the operations of the various panels established, based on school district boundaries throughout the County.

The juvenile offenders that are referred to the panel for adjudication are first-time offenders that are alleged to have committed summary offenses or minor misdemeanor offenses. The Youth Aid Panel concept is based on the Restorative Justice Model that emphasizes the juveniles taking responsibility for their actions, an expression of remorse or apology to any aggrieved party, restitution to any victims, community service and complying with any other stipulations set by the Youth Aid Panel.

The Police Department coordinator for the program is Officer Mark A. Stead. Officer Stead is responsible for reviewing incidents that are recommended for referral to the Youth Aid panel by police officers that have filed non-traffic citations or juvenile petitions. In the event that the criteria for consideration are met, the juvenile and their parents must agree to enter the Youth Aid Panel program in lieu of District Court or the Montgomery County Juvenile Court. Once accepted by the Youth Aid Panel, the juvenile avoids the stigma associated with the formal juvenile justice system and the associated sanctions while accepting consequences that are consistent with their actions.

For more information on the Youth Aid Panel, please contact Officer Mark A. Stead at 610-539-5900.

## New Emergency Management Coordinator Named

As part of the integration of the responsibilities for Emergency Management for Lower Providence Township into the Police Department, the Board of Supervisors on February 17, 2005 named Detective Charles A. DeFrancesco as the Emergency Management Coordinator for the Township. DeFrancesco was selected after an internal interview process and an assessment that was conducted by the Montgomery County Office of Emergency Preparedness.

DeFrancesco has been with the Police Department since 1985, beginning his career as a police dispatcher. He was appointed to the position of police officer in 1987. He has served in the Patrol Division and the Detective Division and has previously been detached to the Montgomery County District Attorney's Office Narcotics Enforcement Team. DeFrancesco has served with the Lower Providence Community Center Ambulance, the Lower Providence Volunteer Fire Company, and had held the position of Deputy Emergency Management Coordinator previously.

As Emergency Management Coordinator, DeFrancesco is responsible for executing the mandate of the Board of Supervisors to ensure the preparedness of the Township to respond to both man-made and natural emergencies. DeFrancesco will be working closely with other governmental agencies and private entities in reviewing, preparing and refining emergency response plans and protocols in addition to effectively managing the emergency response resources that are available.



Charlie DeFrancesco working on updating the Emergency Management Plans from his new office at Lower Providence Township.

## Waste System Authority - Household Waste Collection

The Waste System Authority of Eastern Montgomery County has scheduled a Household Hazardous Waste collection at Methacton High School on July 16 from 9:00 AM to 3:00 PM in the rear student parking lot.

Items containing hazardous chemicals can be identified typically with labels titled "Warning", "Caution", "Poisonous", "Toxic", "Flammable", "Corrosive", "Reactive", or "Explosive". Hazardous waste items accepted include, automotive products, pesticides/herbicides, household cleaning products, paint products, and other miscellaneous household products.

For complete information on the types of material they will be collecting or for other Montgomery County Household Hazardous Waste collection locations, you can visit the Waste System Authority website at [www.wsaemc.org](http://www.wsaemc.org).

## April is National Blood Donor Month

The hospitals in our community desperately need blood products each and every day. Please do not wait for a crisis to give blood. Every day there are emergencies where patients need blood to support a treatment that could save their lives. Give back to your community by donating your most valuable commodity, your blood.



Lower Providence Township will be hosting the American Red Cross on April 25, 2005 from 8:00 a.m. to 2:00 p.m. in the public meeting room. Please register by calling Julie Dechnik at 610-539-8020 x122.

# Board of Supervisors Approve 2005 Budget

The Board of Supervisors approved the 2005 Lower Providence Township Operating and Capital Budgets at the meeting on December 16, 2004. As in the past, this budget follows the high standard of fiscal responsibility as set forth by the Board. The budget continues to create an equitable revenue structure in relation to taxes paid and services received by the taxpayer.

The major projects scheduled for 2005 include the road reconstruction of Mockingbird Road, Parklane Drive, Township Line Road, East Mount Kirk Avenue, Farview Avenue, and Whipporwhirl Road. Capital Improvement projects include the continued maintenance of park enhancements, such as baseball fields at Evansburg Point Park, stream bank improvements at Hoy Park, entrance paving at Eskie Park, storm drains and fencing at Red Tail Park.

## Where Do My Taxes Go?

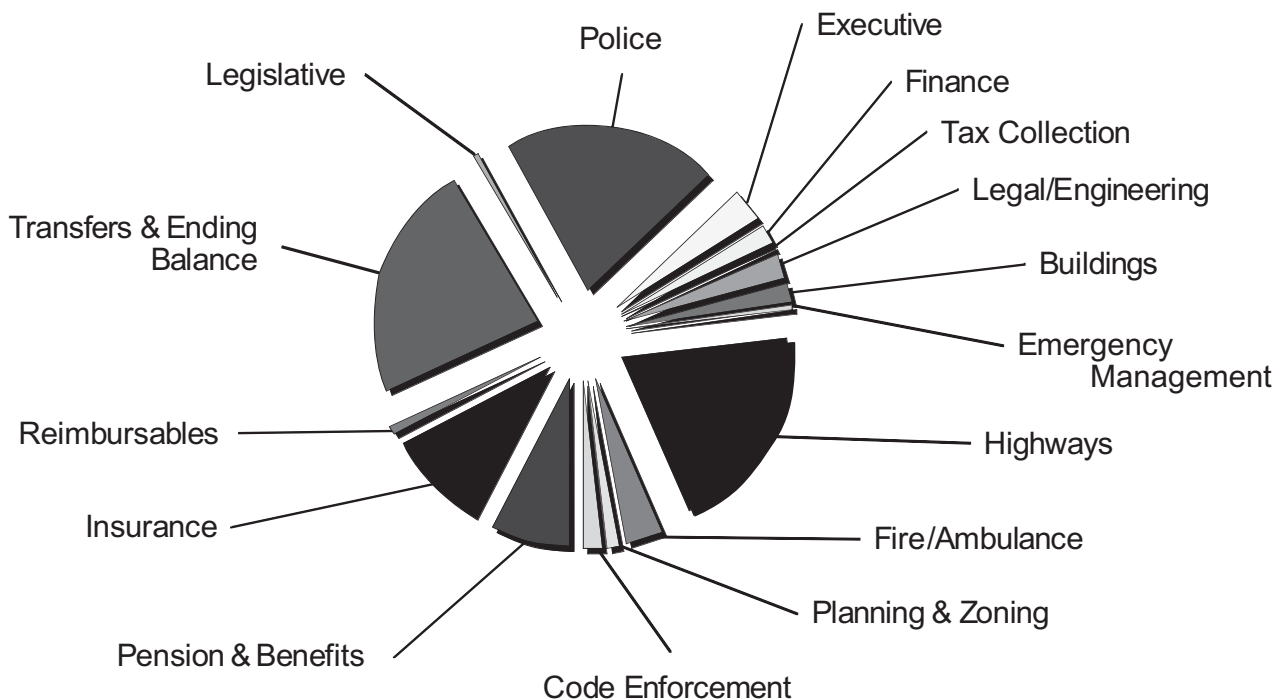
The Departments of Lower Providence Township strive to maintain the excellent standard of services that Township residents have become accustomed to. The Township is comprised of the Departments of Administration, Finance, Tax Collection, Code Enforcement, Planning and Development, Police Protection, Fire Marshal, and Public Works. The revenue received through tax collection, user fees, and miscellaneous income is expended to preserve the functionality of each department.

A copy of the 2005 Budget is available for review at the Lower Providence Township Building. It can also be seen on our website at [www.lowerprovidence.org](http://www.lowerprovidence.org).

## 2005 General Fund Budget

Legislative	21,750	0.2%
Police	2,358,538	21.0%
Executive	366,877	3.3%
Finance	183,972	1.6%
Tax Collection	68,858	0.6%
Legal/Engineering	290,000	2.6%
Buildings	200,000	1.8%
Emerg Mgmt	42,500	0.4%
Highways	2,270,637	20.2%
Fire/Ambulance	435,301	3.9%
Planning & Zoning	118,850	1.1%
Code Enforcement	222,634	2.0%
Pension & Benefits	865,756	7.7%
Insurance	1,050,800	9.3%
Reimbursables	117,250	1.0%
Transfers & Ending Balance	2,644,055	23.5%
<b>Total</b>	<b>11,257,778</b>	<b>100.0%</b>

## 2005 Budget by Department



# Police Department Activity For 2004

The Lower Providence Township Police Department experienced a very busy year during 2004 as indicated by departmental statistics. The ongoing issues concerning traffic that manifest themselves on various levels throughout the Township are a continuing area of focus for the Police Department. Between January and December of the past year, Lower Providence Township police officers conducted 3,603 vehicle stops for a variety of traffic violations. There were 713 motor vehicle accidents that were investigated, with 319 of those being reportable accidents, which involve any fatality or injury to individuals or the requirement of a vehicle being towed from the scene.

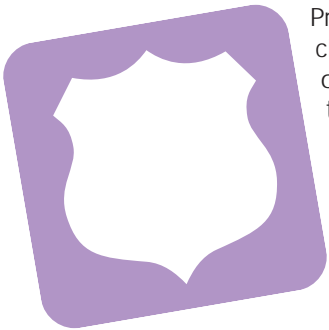
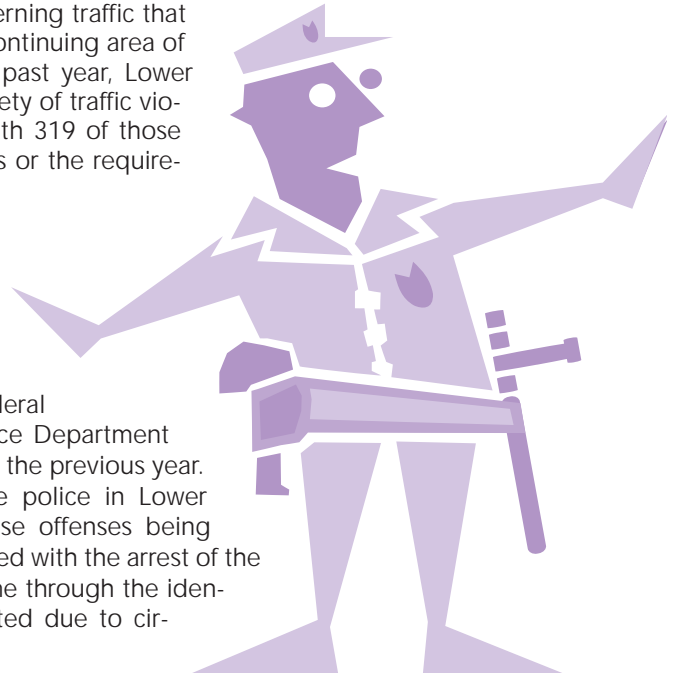
The Police Dispatch Center received 33,396 calls, which was an increase of 1,339 from the previous year. Those calls generated 9,328 calls for service, an increase of 4.7% from 2003. There were 2,253 incident reports filed throughout the year, a 5.6% increase from the preceding year. Police personnel responded to 803 alarm activations, both residential and commercial.

The Uniform Crime Report (UCR) statistics that are submitted to the Federal Bureau of Investigation reflected 427 Part I offenses. Significantly, the Police Department cleared 37% of those offenses, with that clearance rate being 3% higher than the previous year.

There were 653 Part II offenses reported to the police in Lower Providence Township in 2004, with 62% of those offenses being cleared. A clearance of a reported crime is indicated with the arrest of the offender or the exceptional clearance of the crime through the identification of the offender but no arrest is effected due to circumstances outside of the control of the police.

The department saw an increase in juvenile contacts from 214 in 2003 to 296 contacts in 2004, with seventy-seven of those juveniles being petitioned to the Juvenile Division of the Montgomery County Court of Common Pleas.

There were also seventy-five non-traffic citations issued to juveniles throughout the year for a variety of summary offenses.



Traffic Stops	3603
Motor Vehicle Accidents	713
Reportable Accidents	319
Non-Reportable Accidents	394
Calls to Police Dispatch	33,396
Calls for Service	9,328
Incident Reports	2,253
Alarm Activations	803
Part I Offenses	427
Clearance Rate	37%
Part II Offenses	653
Clearance Rate	62%
Criminal Arrests	266
Juvenile Contacts	296
Juvenile Petitioned	77
Juvenile Citations	75

# Upcoming Public Works Road Projects

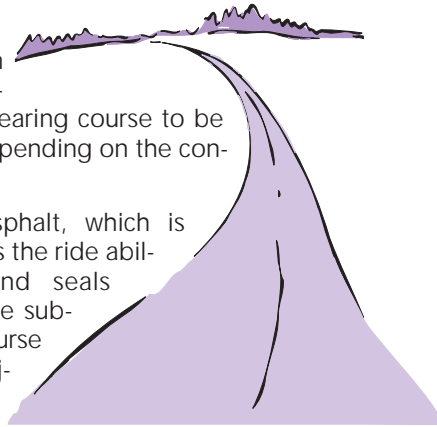
Lower Providence Township will be performing the following road reconstruction projects during the next several months. The tentative schedule is as follows.

Roadway	Type of Work	Approximate Start Date
Mockingbird Road	Leveling, Wearing & Curbs	April- May
Whipporwill Road	Leveling, Wearing & Curbs	April- May
Parklane Drive	Leveling Course & Wearing Course	June-July
Township Line Road	Leveling Course & Wearing Course	June-July
East Mt. Kirk Avenue	Leveling Course & Wearing Course	June-July
Farview Avenue	Leveling Course & Wearing Course	April- May

## Road Paving Definitions

**Leveling Course** A layer of asphalt, which is applied to a roadway to level or modify the profile of the roadway, thus allowing for a uniform wearing course to be applied. A leveling course can vary in thickness depending on the condition of a roadway.

**Wearing Course** Is the top layer of asphalt, which is applied to a roadway. It is the layer, which provides the ride ability for vehicles traveling over the road and seals out all the weather elements from penetrating the sub-base of the road. The thickness of the wearing course to be applied on the 2005 road reconstruction projects is one and one half inch.



## Lower Providence Community Access Channel (continued)

which is provided in a "crawl" at the bottom of the screen. Sound will be added to the site in the future.

A quick and convenient way to stay informed, the channel provides information for residents of all ages—for example, initial listings included news about the upcoming Father/Daughter Dance at Audubon Elementary School, a reminder for students taking the SAT at the High School, and an invitation to the Library's wine-tasting fundraiser.

While the Community Access Channel is in its infancy, the potential for growth is limitless. Re-broadcast of community happenings, school events, and educational programming are all possibilities.

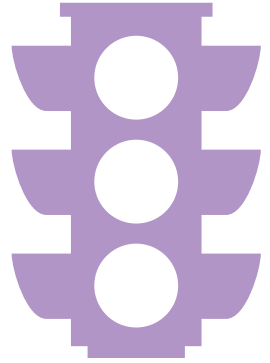
Bill Roth, Director of Special Projects and Technology for the Township, is working hand-in-hand with the Methacton School District and District Superintendent Dr. Jeffrey Miller to ensure the success of the new venture and to explore the educational value of the channel. Equipment for the channel is maintained at the High School, under the Technology Services group.

"The Township is pleased with the progress of the cable channel and the coordination received from Methacton School District personnel in the preparation and launch" said Doug Hager, Board of Supervisors Chairman.

If you have Comcast Cable and are unable to see the Township channel or for additional information, contact Bill Roth at [broth@lowerprovidence.org](mailto:broth@lowerprovidence.org). Members of Lower Providence community organizations, who would like to have items considered for posting, are asked to send an email to [admin@lowerprovidence.org](mailto:admin@lowerprovidence.org).

# Pothole Help

The Director of Public Works is asking residents for their assistance. When residents notice potholes on Township roadways please call 610-539-8020 and advise the Township of their location. The Public Works Department will then repair them as quickly as possible. Because of cold temperatures coupled with the amount of precipitation, the Director of Public Works is expecting to see some road problems this spring. The Public Works Department will be working to restore the roadways during the spring and summer seasons.



Also if residents notice a streetlight or traffic signal light that is not working, call the Township at 610-539-8020. For streetlights please look to see if there is a pole number on the utility pole, this helps the maintenance people when they respond.

## Pennsylvania Department of Environmental Protection Brochure

The Lower Providence Township Planning and Zoning department in conjunction with the PA Department of Environmental Protection has made available a convenient and informational brochure on understanding storm water and how it can affect your money, safety, health and the environment. This tear-out brochure can be found on pages 9 & 10 of the newsletter.

## What is Storm Water?

Storm water is water from precipitation that flows across the ground and pavement when it rains or when snow and ice melt. The water seeps into the ground or drains into what we call storm sewers. These are the drains you see at street corners or at low points on the sides of streets. Collectively, the draining water is called storm water runoff.

## Why is Storm Water "Good Rain Gone Wrong"?

Storm water becomes a problem when it picks up debris, chemicals, dirt, and other pollutants as it flows or when it causes flooding and erosion of stream banks. Storm water travels through a system of pipes and roadside ditches that make up storm sewer systems. It eventually flows directly to a lake, river, stream, wetland, or coastal water. All of the pollutants storm water carries along the way empty into our waters, too, because storm water does not get treated!



Pet wastes left on the ground get carried away by storm water, contributing harmful bacteria, parasites and viruses to our water.



Vehicles drip fluids (oil, grease, gasoline, antifreeze, brake fluids, etc.) onto paved areas where storm water runoff carries them through our storm drains and into our water.



Chemicals used to grow and maintain beautiful lawns and gardens, if not used properly, can run off into the storm drains when it rains or when we water our lawns and gardens.



Waste from chemicals and materials used in construction can wash into the storm sewer system when it rains. Soil that erodes from construction sites causes environmental degradation, including harming fish and shellfish populations that are important for recreation and our economy.

## Where To Go To Continue the Information Flow

Your community is preventing storm water pollution through a storm water management program. This program addresses storm water pollution from construction, new development, illegal dumping to the storm sewer system, and pollution prevention and good housekeeping practices in municipal operations. It will also continue to educate the community and get everyone involved in making sure the only thing that storm water contributes to our water is... water! Contact your community's storm water management program coordinator or the Pennsylvania Department of Environmental Protection for more information about storm water management.



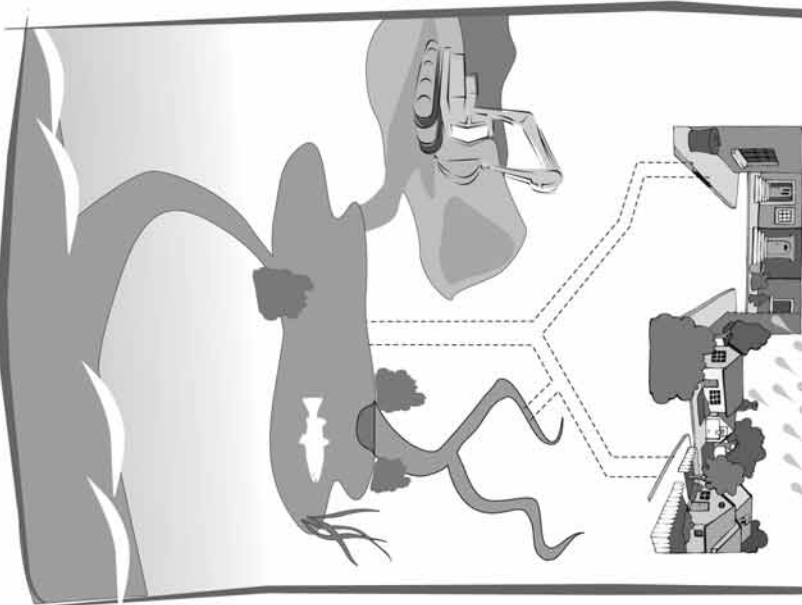
Pennsylvania Department of Environmental Protection  
www.dep.state.pa.us

- 1. Ditch** - Part of the storm sewer system. Most people think that the system is just a series of underground pipes. It can also include ditches used to convey storm water from the land to a receiving lake, river, or stream.
- 2. Fire Hydrant** - Not part of the storm sewer system. Water sprayed from fire hydrants is not storm water, but is allowed by law to enter the storm sewer system.
- 3. Curb with Storm Drain Inlet** - Part of the storm sewer system. Many people do not realize that this is an opening leading to the storm sewer system. Anything going into this inlet (e.g., trash, leaves, improperly disposed of hazardous materials) travel directly to a receiving lake, river, or stream without being treated first. Many communities stencil storm drains with "Do Not Dump" messages to let people know.
- 4. Storm Sewer Outfall** - Part of the storm sewer system. An outfall is where storm water drains from the storm sewer system into a receiving lake, stream, or river. If there is a flow from an outfall when it isn't raining, there could be a problem with the system or someone has used a storm drain for illegally disposing of materials.
- 5. Toilet** - Not part of the storm sewer system. Water from sinks and toilets in homes and businesses travel through a sewer system constructed to carry sanitary wastes. In some instances, older communities may have a combined sewer system that carries both storm water and sanitary waste.
- 6. Storm Sewer System** - A network of pipes and structures that collect and transport storm water from streets, on-site, and other sources to a receiving lake, stream, or river. Storm sewer systems can leak and contribute pollutants to the storm sewer system as well as streams, rivers, and oceans.
- 7. Roads and Other Paved Areas** - Not part of the storm sewer system. Roads and other hardened surfaces such as parking lots and sidewalks can accumulate pollutants (e.g., oil, grease, dirt, leaves, trash, pet wastes) that storm water eventually washes into the storm sewer system.
- 8. Storm Drain Inlet** - Part of the storm sewer system. This is another example of what a storm drain may look like. Like the storm drain inlet shown in picture #3, anything that enters this drain will go directly to streams, rivers, and lakes without being treated. It is important to recognize this as a storm drain to prevent it from being used as a trash can.

## Answers to Test Your Storm Sewer System Savvy:

# When It Rains, It Drains

Understanding Storm Water and How It Can Affect Your Money, Safety, Health, and the Environment



## What Happens when It Rains?



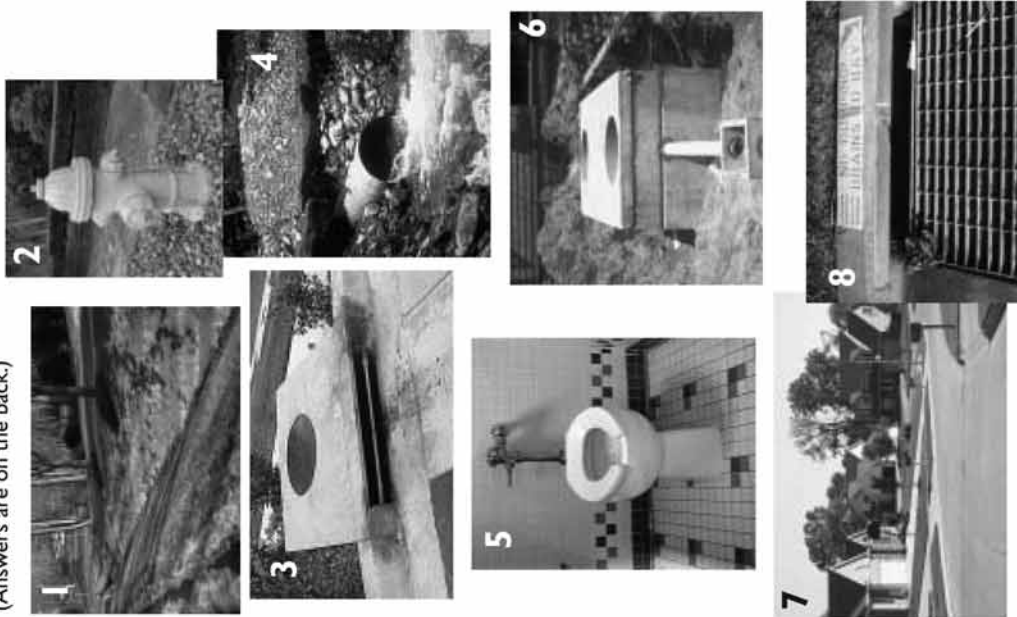
Rain is an important part of nature's water cycle, but there are times it can do more damage than good. Problems related to storm water runoff can include:

- Flooding caused by too much storm water flowing over hardened surfaces such as roads and parking lots, instead of soaking into the ground.**
- Increases in spending on maintaining storm drains and the storm sewer system that become clogged with excessive amounts of dirt and debris.**
- Decreases in sportfish populations because storm water carries sediment and pollutants that degrade important fish habitat.**
- More expensive treatment technologies to remove harmful pollutants carried by storm water into our drinking water supplies.**
- Closed beaches due to high levels of bacteria carried by storm water that make swimming unsafe.**

We can help rain restore its good reputation while protecting our health and environment while saving money for ourselves and our community. Keep reading to find out how...

## Test Your Storm Sewer System Savvy!

What does the storm sewer system look like in your community? See if you can identify which pictures are part of the storm sewer system. (Answers are on the back.)



## Restoring Rain's Reputation: What Everyone Can Do To Help

Rain by nature is important for replenishing drinking water supplies, recreation, and healthy wildlife habitats. It only becomes a problem when pollutants from our activities like car maintenance, lawn care, and dog walking are left on the ground for rain to wash away. Here are some of the most important ways to prevent storm water pollution:

- ◆ Properly dispose of hazardous substances such as used oil, cleaning supplies and paint—never pour them down any part of the storm sewer system and report anyone who does.
- ◆ Use pesticides, fertilizers, and herbicides properly and efficiently to prevent excess runoff.
- ◆ Look for signs of soil and other pollutants, such as debris and chemicals, leaving construction sites in storm water runoff or tracked into roads by construction vehicles. Report poorly managed construction sites that could impact storm water runoff to your community. (See the back of this brochure for contact information.)
- ◆ Install innovative storm water practices on residential property, such as rain barrels or rain gardens, that capture storm water and keep it on site instead of letting it drain away into the storm sewer system.
- ◆ Report any discharges from storm water outfalls during times of dry weather—a sign that there could be a problem with the storm sewer system.
- ◆ Pick up after pets and dispose of their waste properly. No matter where pets make a mess—in a backyard or at the park—storm water runoff can carry pet waste from the land to the storm sewer system to a stream.
- ◆ Store materials that could pollute storm water indoors and use containers for outdoor storage that do not rust or leak to eliminate exposure of materials to storm water.

## Code Enforcement Department Coffee Forum for Contractors

Lower Providence Township Code Enforcement officials on Saturday February 19th at the Township auditorium held a question and answer session with local contractors. The Codes Department had hand-outs available on New Building Permit Applications and information that was designed to assist contractors with obtaining a permit without unnecessary delay.

The next open form is scheduled for March 19th at 9:00 AM for contractors and at 1:00 PM for township residents. Others are planned in the future. To download Building Permit forms please go to the Code enforcement website at [www.lowerprovidence.org/code.htm](http://www.lowerprovidence.org/code.htm).



## Walk of Honor Reminder

The Veterans Walk Of Honor is a special way of to recognize all Veterans. Forms are available on our website [www.lowerprovidence.org](http://www.lowerprovidence.org), or at the Township Building.

An engraved brick with your loved one's military record will be a lasting memory. The cost of this brick is \$100.00. This brick will be installed in the walk way in front of our Veterans Memorial at the Township Building. This is a great way to honor your loved one this Memorial Day.





Lower Providence Township  
100 Parklane Drive  
Eagleville, PA 19403  
[www.lowerprovidence.org](http://www.lowerprovidence.org)

PRESORT STD  
U.S. POSTAGE  
**PAID**  
Permit 286  
SEPA 19399

## *Bicentennial Events Listing*

- |                          |   |
|--------------------------|---|
| <b>April 21st - 24th</b> | Art Show at Mill Grove  |
| <b>April 29th</b>        | Bicentennial Recipe Contest Deadline.   |
| <b>May 14th</b>          | Golf Outing   |
| <b>July 4th</b>          | Performance of the patriotic music by the Red Hill Band, followed by a Fireworks celebration.   |
| <b>August 13th</b>       | Re-Enactment with St. James Church featuring the 2nd Pennsylvania Regiment. The regiment will host drilling, marching and musket demonstrations |
| <b>August 20th</b>       | Car Show  |
| <b>September 10th</b>    | Bicentennial Day – Our annual Funday celebration will be augmented with Fireworks and other festivities   |
| <b>September 17th</b>    | Parade  |

