

Frequent Heavy Rain Events Spell Stormwater Trouble

Stormwater runoff is rainfall or snowmelt that flows off the surface of the land instead of permeating into the soil. Today, construction standards to regulate this runoff are stricter than they've ever been. Stormwater management systems have become a major requirement of any large development project with permits required by the National Pollutant Discharge Elimination System (NPDES) to control runoff volume, rate and quality. However, that wasn't the case years ago and the extraordinarily heavy rain the Township experienced this year has exposed that fact.

Neighborhoods older than 10 or 15 years which includes much of the Township don't have nearly the same amount of stormwater design and infrastructure as newer developments. Minimal requirements and a desire to preserve natural features may have led to the deferment of the construction of manmade stormwater infrastructure in years past.

"When I meet people new to the Township, they almost always comment on its natural beauty," says Township Community Development Director Mike Mrozinski, who notes that it's a unique feature of Lower Providence that many natural features remain even though the Township is mature and almost fully built-out.

Finally, the addition of sheds, gardens, playsets and the like to backyards have had a cumulative impact on stormwater runoff. Bottom line: The Township is left with less than ideal stormwater management in some areas.

Residential stormwater issues are subject to very limited regulation, says Mrozinski. Most fall outside the scope of Township's authority. "For the majority of situations, the most effective way to solve this kind of issue is to work cooperatively with your neighbor," says Mrozinski. There are many things that homeowners can do to mitigate issues and the Township is happy to assist property owners and neighbors who want to work together.

Neighbors need to remember that water does not follow property boundaries and it is important to realize that activities on your property can adversely affect your neighbor. The first thing to do as a responsible neighbor is to familiarize yourself with how stormwater flows on your own property. Ask yourself how does water enter and exit my

property? Are there areas of concentrated flow currently causing damage to your property or adjacent neighboring property? If so, flows can be re-directed to vegetated areas for infiltration. You can also install a rain barrel, cistern, rain garden, or dry well as needed to control roof run-off.

Informative resources for homeowners regarding stormwater best management practices, such as "A Homeowners Guide to Stormwater Management" can be found on the Township website, www.lowerprovidence.org/stormwater-management, and at the Penn State Extension, extension.psu.eduextension.psu.edu.

Questions can be directed to mmrozinski@lowerprovidence.org.



Inside This Issue

Contact Information	2	Home Heating Maintenance Tips	14
2019 Budget Adopted	2	Police Department News	18
Meetings Schedule & Office Closures..	2	Winter Weather Reminders.....	20
Supervisors Meet & Greet Event.....	4	Sewer Authority News	22
Perkiomen Creek Crossing Project.....	6	Disposal Of Hazardous Items.....	22
Development Projects	8	Library Events & Programs	24
Van Buren Property Success	10	Parks & Recreation News.....	26-30
Fire Marshal Winter Safety Tips	12		

HELP US HELP YOU

To help emergency responders locate your home or business, address numbers must be visible from the street, must be a minimum height of four inches and a minimum stroke width of one-half inch, and in a contrasting color to the background. If you need more information about addressing, contact the Emergency Manager, 610-635-3546.



ADMINISTRATION OFFICE

100 Parklane Drive
Eagleville, PA 19403
610-539-8020
610-539-6347 (fax)
www.lowerprovidence.org

Hours:

Monday through Friday
8:00 am 4:30 pm

BOARD OF SUPERVISORS

Patrick T. Duffy
pduffy@lowerprovidence.org

Colleen Eckman
ceckman@lowerprovidence.org

Peter MacFarland
pmacfarland@lowerprovidence.org

Gary Neights
gneights@lowerprovidence.org

Jason Sorgini
jsorgini@lowerprovidence.org

Board of Supervisors meetings:
First and third Thursdays of the month at 7:30 p.m.

IMPORTANT CONTACTS

Police/Fire/Ambulance.....911
Police Non-Emergency.....610-539-5901
Fire Marshal/Emergency Manager610-635-3546
Firehouse Voicemail.....610-539-5408
Hall Rental.....610-539-9084
www.lpfire.com
Ambulance Business Office.....610-539-8465
www.medic322.com
Library610-666-6640
Sewer Authority610-539-6161
Tax Collector.....610-666-1980
Methacton School District610-489-5000

"LIKE" us on Facebook!

Lower Providence Township

Follow us on Twitter! @LowerProvTwp

COMMUNITY ACCESS

CHANNEL

Comcast Channel 28
Verizon Channel 42

FEEDBACK

We welcome your comments; if you'd like to send us your feedback, please email us at admin@lowerprovidence.org

PHOTO POLICY

Photos may be taken of individuals enrolled in our programs, attending Township events and using Township facilities. Please be aware that the images are for Township use only and may be used in future promotional material.

THANK YOU!

We are grateful to those businesses that support the newsletter. Our advertisers make it possible to provide the newsletter to residents and businesses at a greatly reduced cost.

Board of Supervisors Adopts 2019 Budget

The Lower Providence Township Board of Supervisors adopted the 2019 budget at its December 6, 2018 public meeting.

As part of the 2019 Budget, the Township established an Emergency Services Fund and instituted .32 mills of dedicated Real Estate Millage. Expenses included in this new Emergency Services Fund are: \$200,000 contribution to the Lower Providence Fire Department; \$67,000 contribution to the Lower Providence Ambulance; \$110,000 allocated for fire hydrant assessment costs; \$48,000 to cover the worker's compensation costs for volunteer fire fighters; and about \$50,000 associated with the part-time Fire Marshal position.

As illustrated in recent state and county studies/reports and noted in the fall Township newsletter, the volunteer fire company model is struggling in Pennsylvania. In fact, a recent Pennsylvania report states "Fire and EMS are in a crisis - right now. Simply put, EMS is woefully lacking funding and the number of volunteer firefighters has fallen dramatically over the decades. This is not new and has been highlighted in reports from 1976, 2004 and 2013 amongst many others." Thankfully, the Lower Providence Fire Department is surviving and its volunteer numbers seem to be stable. So, by establishing this dedicated funding, the Township continues to show its long-term support of the volunteer Fire

Department and the important and cost-effective services it provides the citizens of Lower Providence.

The \$10,311,554 General Operating budget is balanced, albeit utilizing a small portion of the Fund Balance Reserves. The Township critically reviewed the General Fund and the 2019 budget is approved to meet the needs of the community without any excess expenditures. As we move forward in 2019, a more detailed analysis will occur in order to propose a long-term plan to address the structural deficiencies in the General Fund as well as address the funding of the Township's capital expenditures in the future. The Township will look to establish a plan to address the rising costs of our core services which include police, fire, emergency medical, roads and public works and how we fund those costs.

Capital purchases and projects planned for 2019 include Eagleville Park playground equipment (\$95,000 paid for by development fees); computer technology upgrades (\$7,200); Police radios (\$35,780); Police vehicles (\$109,000); storm water piping repairs (\$19,000); Business Park Sidewalk Project (\$100,000 grant and \$20,000 Township contribution) and continuation of the Township's road paving program (\$442,235). These projects/purchases are funded through the Capital Projects Fund, the Parks and Recreation Capital Fund and the Liquid Fuels/Highway Aid Fund.

MEETING SCHEDULE

Board of Supervisors
7:30 p.m.
1st and 3rd Thursdays

Planning Commission
7:00 p.m.
4th Wednesday

Library Board of Trustees
7:00 p.m.
3rd Monday
Library Board Room

Sewer Authority
6:00 p.m.
2nd Monday
Sewer Authority Board Room

Parks & Recreation Board
7:00 p.m.
2nd Tuesday

Zoning Hearing Board
7:00 p.m.
4th Thursday

All meetings held at the Township Administration Building unless otherwise noted.

Watch at home or online:

Board of Supervisors & Zoning Hearing Board meetings are shown on the Cable Access Channel (Comcast Channel 28 and Verizon Channel 42) the week following a meeting. Rebroadcast times are Tuesday, Thursday and Saturday at 1 am, 9 am and 7 pm. You can also watch Board of Supervisors meetings on the Township website,

www.lowerprovidence.org - click on "Minutes" to find the meeting videos.

Upcoming 2019 Administration Office Closures

Presidents' Day
Monday, Feb. 18

Good Friday
Friday, April 19

Easter Monday
Monday, April 22

Memorial Day
Monday, May 27

Flag Day
Friday, June 14

Independence Day
Thursday, July 4



Visiting Angels
LIVING ASSISTANCE SERVICES
*We Care Every Day,
In Every Way.*
Visiting Angels
Can Help...

Senior Care for Total Peace of Mind

Bathing Assistance	Medication Reminders	Friendly Companionship
Dressing Assistance	Errands/Shopping	Flexible Hourly Care
Grooming	Light Housekeeping	Respite Care for Families
Assistance with Walking	Meal Preparation	Live-In Care

610.650.0930
Each Visiting Angels agency is independently owned and operated.



www.visitingangels.com/audubon

Happy Hour Specials
"Best In Town"

Via Roma

ITALIAN RESTAURANT & SPORTS BAR
3200 RIDGE PIKE • EAGLEVILLE, PA 19403 • 610-531-0864



15% OFF
your purchase with this ad.



**Military, Fire, & Police
20% Discount**

Lg Plain Pizza \$8.99 M-W • Lunch Specials Everyday
\$1 and \$2 Beer Everyday, Take Out Beer, **OPEN LATE!
Let us cater your Parties & Pizza Days, No one beats our quantity discounts.

UberEats GrubHub Eats24 EzCater.com

9,000 Homes see these ads!
Call 610-265-6277 to advertise your business or organization.



Brightview. Bright Life!

Let Your Bright Life Shine

at Montgomery County's
Premier Senior Living Community

Independent Living: It's the carefree retirement you've dreamed of! At Brightview, all you have to do is what you want to do.

Personal Care: Highly trained associates provide the care you need.

Wellspring Village®: Compassionate professionals deliver our highly specialized dementia care program in a secure, state-of-the-art neighborhood.

BRIGHTVIEW
SENIOR LIVING
EAST NORRITON



Call Devon or Karen to schedule
your personal visit. 610.239.7700
300 East Germantown Pike • East Norriton, PA 19401
www.BrightviewEastNorriton.com



Supervisors Continue Outreach Effort

The Board of Supervisors held an informal Meet and Greet event for business and property owners from the Park Pointe business park and Audubon area on October 24. It was the third such event hosted by the supervisors as part of their 2018 goal to improve outreach and share information about projects in and around the Township.

Attendees were invited to meet one-on-one with the supervisors and learn about several current and future projects affecting the Township. Displays included information on sidewalk improvements planned for the business park, the Park Avenue/Crawford Road/Eagleville Road intersection realignment project, and the US 422 bridge construction project.

The gathering also provided attendees and presenters the opportunity to network with their business community neighbors.

"I wish more municipalities would hold events like these," said Mark Cassel, SEPTA representative. Cassel was on hand to provide information on routes affecting commuters to the Township.

Bald Birds Brewing, a new addition to the business park, provided the meeting space for the morning open house-type event. Valerio Coffee Roasters, also a business park tenant, provided coffee.

The Township's Business Development Committee, which organized the event, supports the supervisors' vision by planning for growth opportunities, spearheading the promotion of the Township and finding ways to repurpose challenging vacant commercial sites. The Committee noted the following development news:

- **Providence Place Senior Living**
The former Collegeville Inn site, being repurposed as a senior living facility, is due to open Spring 2019.
- **Courts at Brynwood**
Phase I, to include 88 of the 139 townhomes being constructed by WB Homes, is well underway. Model homes are now available for inspection.
- **Lidl Grocery Store**
The German-based grocery store chain is repurposing the Norristown Ford and Sunoco Gas Station sites for a 28,000 square foot facility. All Township and third-party agency approvals have been obtained and the store is expected to open in 2019.
- **950 Rittenhouse Road**
The property continues to undergo remediation by the EPA and PA DEP. Due to action taken by the Township supervisors and Methacton School District, the property is now eligible as a Local Economic Revitalization Tax Assistance (LERTA) site.



The Supervisors continued their outreach efforts with a Meet and Greet event for businesses.

Thank You

Thanks to the generosity of our residents and businesses, the Township's Caring and Sharing program was able to brighten the holidays for 10 families in our community, providing meals and presents. We are truly grateful for the support of all the individuals who participated and the following businesses/groups:

Gannett Fleming,
Houghton International,
Designed Treasurers,
Shirt and Ink,
and Scout Pack 313.





VAUGHN'S
DOJANG™

TANG SOO DO
HAPKIDO






WITH THIS COUPON
ONE MONTH FREE (8 CLASSES)
*** FREE UNIFORM + FREE PRIVATE LESSON**
ALL FREE
 AUDUBON VILLAGE SHOPPING CTR. AUDUBON
(610) 676-0691
WWW.VAUGHNSDOJANG.COM

"I got my life back."

- Lose 15-22 lbs./month*
- Sleep better
- Stabilize your mood
- Have more energy

ASHINI
LOST
25 LBS.*





BeBalanced
HORMONE WEIGHT LOSS CENTERS

Schedule your free consultation today...
Collegeville Center 610.968.BFAB (2322)
 305 2nd Avenue, Collegeville, PA 19426
www.bebalancedcenters.com/collegeville

*Actual client. These results reflect those of this particular client, and are based on their individual participation in the Becoming Balanced program. Results may vary.

9,000 Homes see these ads!
Call 610-265-6277 to advertise your business or organization.



**EAGLEVILLE
TAVERN**

Since 1725

Great Food · Great Spirits
Great Fun !

3300 Ridge Pike
Eagleville, PA 19403

A Place Where Good People Come Together

For Good Times
And Good Food




Open 7 Days A Week For Lunch & Dinner





eaglevilletavern.com

(610) 539-3909

Perkiomen Creek Crossing Improvement Project

Lower Providence Township completed a study that focused on the transportation needs of the western portion of the Ridge Pike corridor including vehicular, bicycle, pedestrian and public transit services along the corridor and the potential need for a second crossing of the Perkiomen Creek. The next phase of this initiative will be completed by PennDOT and will include design and

construction of roadway and intersection improvements.

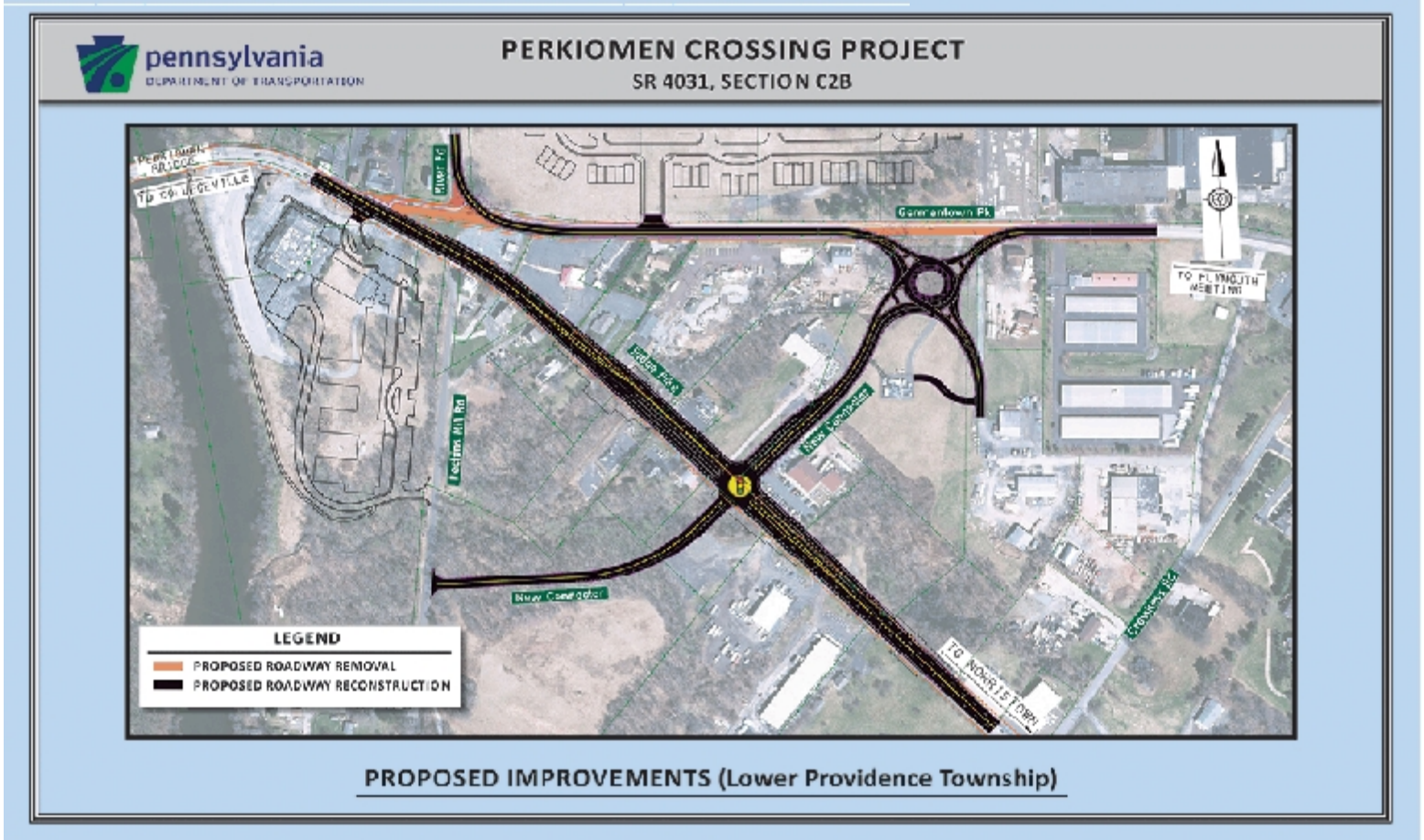
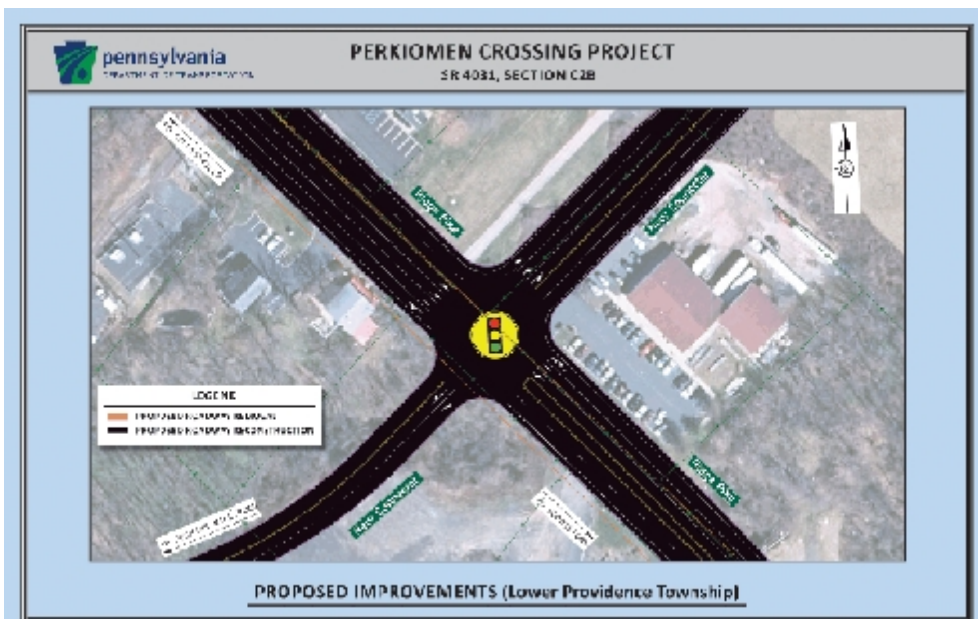
The improvements are intended to improve travel and safety on both sides of the Perkiomen Creek Bridge. Improvements are planned on both sides of the bridge in Lower Providence and Collegeville Borough as part of the Perkiomen Creek Crossing Project.

The planned improvements in Lower Providence call for the elimination of the Ridge Pike / Germantown Pike Y intersection by closing off Germantown Pike at River Road and moving the intersection east. A new Germantown Pike extension will run from Ridge Pike to Pechins Mill Road.

In Collegeville Borough, the planned improvements would eliminate the dogleg intersection at Ridge Pike and Route 29 (First and Second Avenues) in favor of a four-way intersection with signalized turning lanes.

According to PennDOT, the traffic planning and road construction will carry over into 2023 and possibly later. Construction is expected to take 2 years.

PennDOT's Public Plans Display for the project, as well as the Township's Ridge Pike West Corridor Study Report, can be found on the Township website, www.lowerprovidence.org at the "Current Projects" tab.





Rediscover the Collegeville Inn



1960s



1990s



2019

Imagine living in the place where you've enjoyed some of your fondest memories. We're transforming one of Collegeville's most beloved landmarks into the area's newest senior community, including spacious apartments with scenic views, restaurant-inspired dining, and lively resident programs. Conveniently located in Lower Providence Township where Germantown Pike meets Ridge Pike. Rediscover the good times at Providence Place at the Collegeville Inn. You're going to love it here.



Providence Place

SENIOR LIVING

4000 Ridge Pike, Collegeville, PA • www.providence-place.com

NOW ACCEPTING RESERVATIONS
610-222-5007



Development Projects: Underway & Under Review

ON-GOING CONSTRUCTION

Manors at Brynwood

All of the 12 single-family lots are sold and construction will be completed in the spring. The development is located to the easterly side of Cross Keys Road, just south of Vincent Drive.

Courts at Brynwood

Model homes are available to tour and several of the units have already been sold as construction continues on the first phase of a 139-townhome community along Germantown Pike just west of Superior Tube.

Providence Place

Work is well underway on the assisted care facility that is reusing and expanding the former Collegeville Inn site. Look for a sales office this winter with an anticipated spring 2019 opening.

Landis Mill Estates

Sales continue at the nine single-family home subdivision along a new cul-de-sac coming off Landis Mill Road.

Montgomery County and the John J. Audubon Center at Mill Grove, 1201 Pawlings Road

Work continues on the \$12-million project to construct a museum and education center and enhance existing facilities.

Audubon Square V

First Watch, an established breakfast and lunch restaurant, is to be constructed this spring. Hilton and Audubon Land Development broke ground recently on a new Tru by Hilton property. The 121-room, five-story hotel will be located at 825 Forge Ave. adjacent to Firehouse Subs, Starbucks and Sprint.

1418 Gertrude Avenue

David James Real Estate is constructing two single-family homes.

PLANS THAT HAVE COMPLETED FINAL REVIEW:

Lidl US

A demolition permit has been pulled and site work should begin soon. This is the redevelopment of the former Norristown Ford site at Ridge Pike and Trooper Road by the German discount grocery store chain.

St. James Episcopal Church

Site work is expected to get underway soon. The Church plans to construct a new Outreach Center across Evansburg Road from the main church.

109 River Road

The project recently received PennDOT approval and work is anticipated to begin in the spring. Friends and Family Holdings are renovating the former residence to include office space and exterior improvements.

Anderko Custom Homes, 37 Crawford Road

Development documents were recently completed for the project that will be constructed in two phases. There are to be eight lots, six of them being new. This project adjoins the intersection of Park Ave./Crawford Rd./Eagleville Rd., site of proposed intersection improvements.

Gambone Family Development

This is a nine-lot single family home development on Woodland Avenue, near the new ball fields and Woodland Elementary School.

Evansburg Road Tract

Site work has begun and building permits submitted for the DeLuca Homes development to include 24 small-lot single homes in a tract connecting Evansburg Road and Ridge Pike.

306 Level Road

This plan proposes seven new single-family homes on a cul-de-sac, in between Arrowhead Elementary and the Woods at Providence Stella's Way.

PLANS UNDER REVIEW

Eagleville Hospital, 100 Eagleville Road

The \$45- million project to modernize the campus is under review with work likely to begin in 2019.

Iroy Gym & Track, 3444-50 Germantown Pike

The project is proceeding through the land development process. Plans call for the conversion of the former Bridaltown building into an approximately 47,000- square foot indoor gym and track facility, relocating from a neighboring community.

Backyard Winery, 3855 Germantown Pike

Proposal is to renovate existing buildings to create a winery and tasting room.

Liberty N Park, 805 N Park Avenue

Proposal to create two new residential lots.

3829 Yerkes Road

Proposal to create to new residential lots.



WELCOME OLLIE'S! Supervisors Patrick Duffy, Jason Sorgini, Colleen Eckman and Peter MacFarland joined other Township officials in welcoming Ollie's Bargain Outlet to Lower Providence. The store is a welcome addition to the Eagleville Plaza shopping center.



Audubon Family Dental

Family / Cosmetics / Implants

Modern Dentistry with Gentle Care

Dr. Raji Ganesh, DMD
Dentist

2795 Egypt Rd.
Audubon, PA 19403
tel. (610) 631-5800
info@audubonfamilydental.com
www.audubonfamilydental.com

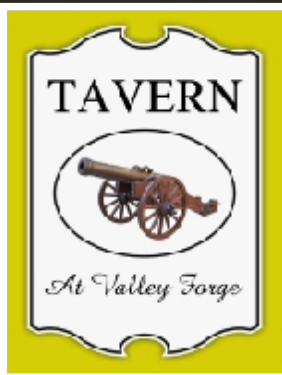
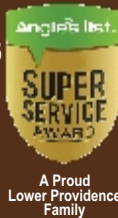


Hardwood • Vinyl • Tile • Carpet • Laminate

900 DEKALB ST.,
BRIDGEPORT, PA 19405

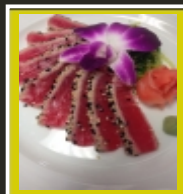
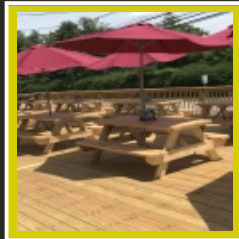
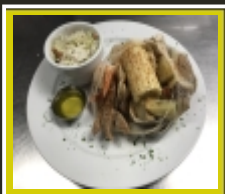
B: 610-272-6293
F: 610-278-6826

E: VALLEYFORGERUG@GMAIL.COM
W: WWW.VALLEYFORGERUG.COM



Check out our
NEWW inter Menu
Lunch and Dinner •
• 7 Days a Week •
• New Deck •
• Over 100 Beers To Go •
• Catering Available •

Make Tonight Historic



827 S. Trooper Road • Norristown, PA
484.392.7804 • www.tavernatvalleyforge.com

Brian Quinn's
BQ Basement Systems
The Basement, Crawl Space & Foundation Specialists™

Interest-Free
FINANCING

Angie's list



CONTACT US FOR A
FREE ESTIMATE | **215-989-4188**
BQHouseandHome.com

**20 YEARS AS THE #1 TRUSTED
NAME IN WATERPROOFING
& FOUNDATION REPAIR** **BEST**



BEFORE



AFTER



BEFORE



AFTER

THIS IS THE YEAR TO FIX YOUR: cold, drafty house,
mold problems, wet basement, or nasty crawlspace.
Start the year off right with a healthier home!

**CALL TODAY TO ENJOY OUR
10% OFF WINTER DISCOUNT***

*MENTION **LOWER PROVIDENCE NEWS** FOR:

\$500 OFF
**FULL PERIMETER
WATERPROOFING
SYSTEM**

\$100 OFF
**POLYLEVEL
INSTALLATION**



Lifetime Transferable Warranties

Sunken Concrete?

fix it with

PolyLevel®

215-989-4188

by BQHouseandHome.com

New Real Estate Owner Finds Success in Lower Providence

Elm Street Real Estate Investors ("ESREI") and a partner acquired 2621 Van Buren in May of 2016. At the time, the building was 70% leased with significant near-term lease maturities, had just been through a foreclosure, and was in need of immediate

renovate the west corner façade and lobby, build an exciting internet café which will have a "grab and go" food locker provisioned by a neighboring business owner AVM Services - and add/expand two exterior collaboration areas/patios.

SF lease for a well-known digital marketing firm which will be announced shortly. When these tenants occupy the property in springtime it will be 92% leased with the final remaining availabilities of 11,000 SF and 7,500 SF.



repairs. ESREI had been searching the greater Philadelphia area for value-add commercial property investments for over a year prior to winning this mixed-use distribution and office property. Prior to closing on this investment, ESREI contacted Lower Providence's business development leader, Bill Roth, to understand the business climate in this area, prospective transportation and Township improvements, and connect with neighboring owners. One of these neighboring owner connections led to an immediate short-term lease.

Subsequent to acquiring the property, ESREI met with Lower Providence's business development team to make sure 2621 Van Buren would be on their radar as they spoke to tenants as well as met with the zoning department to make sure ESREI understood the ground rules for repairs and renovations.

"Mike Mrozinski and his team were tremendously helpful in sharing upfront guidance on renovations, water drainage, and life safety systems, which was incorporated in the renovation and tenant improvement plans and in timely approval of tenant plans that had short deadlines," said Steve Hoover, managing principal for ESREI.

Initial improvement included updating dated common areas such as restrooms and corridors, servicing and updating building systems, and boosting the exterior image from new gardens to repaving and sealing the parking lot.

Once the building was stabilized and existing tenants renewed, ESREI developed plans to

With the help of Lower Providence, poster board renderings of these improvements, and the Flynn leasing team of Joe Corcoran and Kevin Flynn, 2621 won a 31,000 SF headquarters lease for Certa ProPainters, Ltd., North America's largest residential and commercial painting franchisor and a 17,000



In the interim, the area around the property continues to strengthen. Bald Birds Brewing has opened a brewery and public facility adjacent to this property at 970 Rittenhouse Road, Valerio Roaster, also adjacent at 2675 Eisenhower Road, serves coffee at all 2621's tenant appreciation events, and a new connecting road makes Starbucks, Panera, Wawa, and other nearby retail a 3-minute drive with no traffic lights or a 10-minute walk.

"We were so pleased with the assistance of the Township that we offered our facility for the Lower Providence's annual resident meeting and are looking for other investments in the Township," said Hoover. If you are interested in more information on 2621 Van Buren, please contact leasing representatives Kevin Flynn Jr. or Joe Corcoran at The Flynn Company (215-561-6565).



Neighboring Bald Birds Brewery & Valerio Roaster Coffee Store





484-919-0681

LONG & FOSTER

REAL ESTATE

610-489-2100



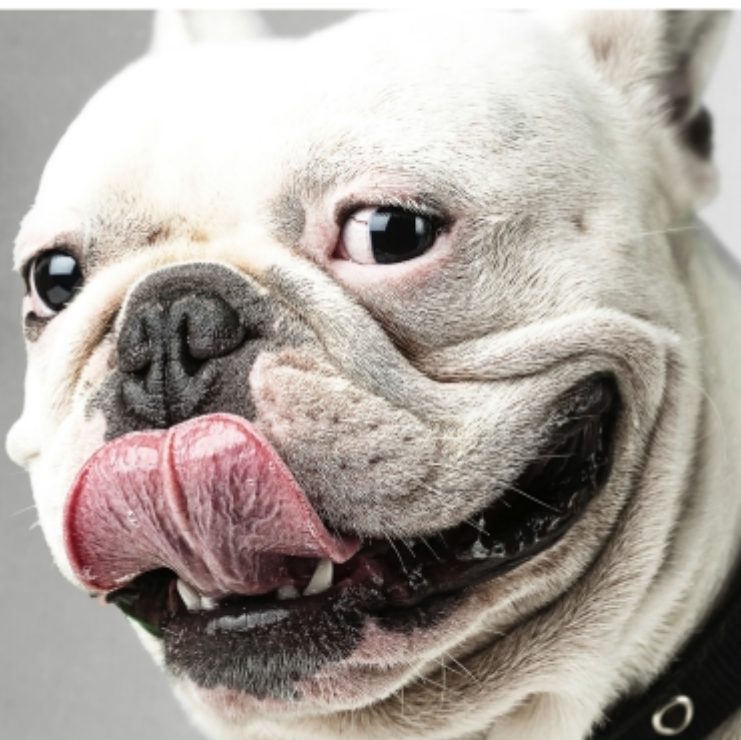
Aggie Kelly Kelly
Wright Fleischmann Corda

9,000 Homes see these ads!
Call 610-265-6277 to advertise your business or organization.

NAMED LOWER PROVIDENCE TOWNSHIP BUSINESS OF THE YEAR

**METROPOLITAN
VETERINARY
ASSOCIATES®**

EMERGENCY AND CRITICAL CARE 24/7/365



WWW.METRO-VET.COM

PennVet
Affiliate

Fire Marshal's Winter Safety Tips



Get Ahead of the Winter Freeze

Check these 10 tips off your list and get ahead of the winter freeze.

- ☐ Our **furnace has been inspected and serviced** by a qualified professional during the last 12 months. (A furnace should be serviced at least once a year.)
- ☐ Our **chimneys and vents have been cleaned and inspected** by a qualified professional. I have checked for creosote built-up. (Not cleaning your chimney is the leading cause of chimney fires from built up creosote. This service needs to be done at least once a year.)
- ☐ Our wood for our fireplace or wood stove is **dry, seasoned wood**.
- ☐ Our **fireplace screen is metal or heat-tempered glass**, in good condition and secure in its position in front of the fireplace.
- ☐ We have a **covered metal container** ready to use to dispose cooled ashes. (The ash container should be kept at least 10 feet from the home and any nearby buildings.)
- ☐ Our children know to stay at least **3 feet away** from the fireplace, wood/pellet stove, oil stove or other space heaters.
- ☐ Our portable space heaters have an **automatic shut-off**.
- ☐ Our portable space heaters will be **plugged directly into an outlet** (not an extension cord) and placed at least three feet from anything that can burn; like bedding, paper, walls, and even people. (Place notes throughout your home to remind you to turn off portable heaters when you leave a room or go to bed.)
- ☐ We have **tested our smoke alarms** and made sure they are working. (You need smoke alarms on every level of the home, inside each sleeping room and outside each separate sleeping area. For the best protection, the smoke alarms should be interconnected so when one sounds, they all sound.)
- ☐ We have **tested our carbon monoxide alarms** and made sure they are working. (Carbon monoxide alarms should be located outside each sleeping area and on every level of the home.)



Lower Providence Township

Fire Marshal: 610-635-3546



Your Source for SAFETY Information

NFPA Public Education Division • 1 Batterymarch Park, Quincy, MA 02169

www.nfpa.org/education ©NFPA 2016



FREE HERNIA SCREENINGS

Did you know hernia symptoms include abdominal swelling, pain or discomfort, acid reflux, and chest pain — which can be mistaken for other conditions? Don't guess! Our surgeons are available to answer all of your questions. Schedule an appointment for a free hernia screening today!

Wasfy Fahmy, MD Valley Forge Surgical Associates Saturday, January 19 10 to 11 a.m.	Edith Behr, MD Surgical Partners of Pottstown Monday, January 28 4:30 to 5:30 p.m.	Martin Vinca, MD Valley Forge Surgical Associates Thursday, February 7 10 to 11 a.m.
Screening held at: Phoenixville Hospital Board Room 826 Main Street - MOB II Phoenixville, PA 19460	Screening held at: Surgical Partners of Pottstown 1597 Medical Drive, Second Floor Pottstown, PA 19464	Screening held at: Phoenixville Hospital Board Room 826 Main Street - MOB II Phoenixville, PA 19460
RSVP: 610-983-1538	RSVP: 610-327-7770	RSVP: 610-983-1538

Registration is required to attend.



Home Heating Maintenance & Safety Tips

Regular Tank Maintenance Can Prevent Devastating Heating Oil Spills

With proper heating oil tank management, homeowners can avoid costly spills, and leaks. Leaking tanks can contaminate public and private drinking water supplies, pollute soils, create the potential for fires and explosions, and subject tank owners to extremely expensive cleanup costs. A typical cleanup cost for spills/overfills ranges from \$10,000 to \$50,000 and is often not covered by typical homeowner's insurance policies.

Tank owners should routinely inspect the exterior of an aboveground tank for uniform corrosion, pitting, holes, leaking pipes, weak support legs, loose joints, and loose fittings. Be aware that most corrosion failures occur from water sitting at the bottom of the tank. Tanks rust from the inside out. Tanks should be installed on a concrete pad, be secured with floor flanges and concrete anchors and be protected from high winds and any potential falling objects. Ensure the tank address is clearly visible and fill line clearly marked.

Spill and overfill prevention devices are simple and generally inexpensive to install. Consider a secondary containment structure to capture any release. Double-walled underground tanks, diked aboveground tanks, and retrofit structures for existing aboveground tanks are readily available.

The PA Department of Environmental Protection provides self-inspection checklists for home heating oil tanks. If the answer is "YES" to any of the following questions, call an oil burner technician for a more detailed inspection and corrective measures.

For basement and backyard aboveground heating oil tanks:

- ✓ Are the tank legs unstable or on a precarious foundation?
- ✓ Is the tank vent clogged or restricted because of ice, snow, or insect nests? (Screened vents can prevent insect nest problems.)
- ✓ Are there any signs of rust, weeps, wet spots, or excessive dents on the tank's surface?
- ✓ Is the overfill whistle silent when the tank is being filled? (Ask your delivery person.)
- ✓ Are there any drips or signs of leakage around the filter or valves?
- ✓ Are there signs of spills around the fill pipe or the vent pipe?
- ✓ Do the oil lines between the tank and the furnace run either under concrete or aboveground without being encased in protective tubing?
- ✓ Is the fuel-level gauge cracked, stuck, or frozen...or are there signs of oil around it?
- ✓ Is there danger of snow or ice falling on the tank?
- ✓ Are you using more oil than normal?

For underground heating oil tanks:

- ✓ Are you using more oil than normal?
- ✓ Is the tank vent clogged or restricted because of ice, snow, or insect nests? (Screened vents can prevent insect nest problems.)
- ✓ Is the tank taking on water - a rise in water level greater than 1/2" for an 8- to 12-hour period? (An oil-burner technician can check for water or provide the owner with water-finding paste to check themselves.)
- ✓ Is the overfill whistle silent when the tank is being filled? (Ask a delivery person.)

For more information, visit www.dep.pa.gov/homeheatingoil.



Heating Safety

BE WARM AND SAFE THIS WINTER!

- Keep anything that can burn at least three-feet (one metre) away from heating equipment, like the furnace, fireplace, wood stove, or portable space heater.
- Have a three-foot (one metre) "kid-free zone" around open fires and space heaters.
- Never use your oven to heat your home.
- Have a qualified professional install stationary space heating equipment, water heaters or central heating equipment according to the local codes and manufacturer's instructions.
- Have heating equipment and chimneys cleaned and inspected every year by a qualified professional.
- Remember to turn portable heaters off when leaving the room or going to bed.
- Always use the right kind of fuel, specified by the manufacturer, for fuel burning space heaters.
- Make sure the fireplace has a sturdy screen to stop sparks from flying into the room. Ashes should be cool before putting them in a metal container. Keep the container a safe distance away from your home.
- Test smoke alarms at least once a month.



There is something about the winter months and curling up with a good book by the fireplace. But did you know that heating equipment is one of the leading causes of home fire deaths? With a few simple safety tips and precautions you can prevent most heating fires from happening.

Heating Equipment Smarts

Install wood burning

stoves following manufacturer's instructions or have a professional do the installation. All fuel-burning equipment should be vented to the outside to avoid carbon monoxide (CO) poisoning.

Install and maintain CO alarms to avoid the risk of CO poisoning. If you **smell** gas in your gas heater, do not light the appliance. Leave the home immediately and call your local fire department or gas company.



NATIONAL FIRE PROTECTION ASSOCIATION
The leading international knowledge resource on fire, electrical and related hazards
nfpa.org/education ©NFPA 2017



**OEHLERT
BROS., Inc.**
THE ENERGY EXPERTS

610-948-3666
610-326-9881
610-935-9551
800-20-ENERGY

Pro Heating Installations!

Save Money & Reduce Your Energy Costs!

**Save!
\$200**

Off any heater installation!
Good through 2/28/2019
May not be combined with other offers.

**Heating Oil,
Natural Gas,
Heat Pumps!**

Value-Packed Heating Service Plans!

Most heater repairs are done on systems that have not had an annual, efficiency tune-up! The Oehlert Bros. service plans include the annual tune-up PLUS repairs that cover parts and labor!



www.TheEnergyExperts.com

**Don't Fall for the "next day" Install!
Always get at least 2 estimates.**

A+ Rating!



Be Ready! Winter Weather

**Weatherproof
your home to
protect against
the cold.**

Install a smoke detector
and carbon monoxide
detector in your home.

Have your chimney
or flue inspected
every year.

Make sure the
batteries are
working!

Insulate walls
and attic.

Caulk and weather-strip
doors and windows.

Check out more
tips on winter
weather indoor
safety.

Never leave lit candles or
other flames unattended.

Bring your pets indoors
as temperatures drop!

**Prepare yourself
for exposure to
winter weather.**

Dress warmly and limit
exposure to the cold to
prevent frostbite.

Avoid getting wet to
prevent hypothermia.

**If power lines
are down, call
your local utility
and emergency
services**

If power lines fall on
your car, warn people
not to touch the car
or power lines.

**Make sure your
car is ready
for winter travel.**

Check antifreeze level
and have radiator
system serviced.

Replace worn tires and
check tire air pressure.

Keep gas tank full to avoid
ice in tank and fuel lines.

Make a winter
emergency kit to
keep in your car.



www.cdc.gov/phpr/infographics.htm



Main Line Health®
Well ahead.®

We're planning for the next generation.

Main Line Health Maternity has been here for growing families as long as families have been growing. From pre-conception counseling and fertility specialists to private delivery suites and advanced neonatal care, our team of OB/GYNs delivers the answers you want with the care you need. Get started at mainlinehealth.org/maternity

LANKENAU MEDICAL CENTER | BRYN MAWR HOSPITAL | PAOLI HOSPITAL | RIDDLE HOSPITAL



Main Line Health®
Well ahead.®

**FOUR SUBURBAN HOSPITALS,
FOUR TOP 10 REGIONAL
RANKINGS, ALL DESIGNED
TO SERVE OUR NEIGHBORS
RIGHT WHERE THEY LIVE.**

Lower Providence Township is served by top-ranking Main Line Health hospitals, and has been for decades.



**LANKENAU
MEDICAL CENTER**



**BRYN MAWR
HOSPITAL**



**PAOLI
HOSPITAL**



**RIDDLE
HOSPITAL**

Police Department News

Police Department Awarded Accreditation for Fifth Time

The Pennsylvania Chiefs of Police Association introduced the Pennsylvania Law Enforcement Accreditation Commission (PLEAC) program to the Commonwealth in July 2001.

The Lower Providence Township Police Department received its first accreditation in 2006 under the direction of then-Chief Francis Carroll. Of the nearly 1200 police agencies in the state, 116 agencies currently have attained accredited status and over 300 agencies have enrolled in PLEAC.



What is Accreditation? Accreditation is a progressive and time-proven way of helping institutions evaluate and improve their overall performance. The cornerstone of accreditation is a defined set of standards with a clear statement of professional objectives. Accreditation administrators establish procedures to adapt existing operations to meet these objectives. During the assessment process, a team of independent police professionals verifies that all applicable standards have been successfully implemented by the department seeking accreditation. The process culminates with a decision by PLEAC, the authoritative body, that the institution is worthy to be designated as an accredited law enforcement agency.

On November 7, 2018, the Lower Providence Township Police Department underwent our fourth reaccreditation assessment. Our team was led by Sergeant Matthew Kuhnert, the department's accreditation manager. The assessment involved a detailed examination of our policies and practices by three outside law enforcement professionals. Those policies were reviewed and compared with the 136 PLEAC standards. We are happy to report that at the completion of the assessment the department was notified that it would be recommended for its fifth accreditation award.

"I am extremely proud of our personnel for their continued team effort and success with the accreditation process," said Chief Stanley Turtle. "I know that our officers and support staff are truly dedicated professionals, but it is great to have that proven when scrutinized by your peers."

New Records Management System

In October, the Lower Providence Police Department switched to a new Record Management System (RMS), transitioning from an RMS, which the department had since 1995, to the Advanced Law Enforcement Intelligence System (ALEIS). The system is sponsored by the Montgomery County Department of Public Safety and connects the Computer Aided Dispatch (CAD) system to the ALEIS reporting site. Thirty-two police departments have transitioned to ALEIS allowing for countywide information sharing, cost savings and time efficiency.

The Montgomery County Department of Public Safety has been working on the project for several years with a goal of building a countywide RMS system that would be integrated with the county's CAD. ALEIS will be available to all law enforcement agencies in Montgomery County. It will allow any law enforcement agency in the county to join and share information in real time with their partners. The integration with the CAD system allows important information that is recorded by 911 call-takers and dispatchers to be transferred directly into the incident report, saving time and effort for everyone utilizing the system.

What Does a Snow Emergency Mean?

The Township's Emergency Manager has the authority to declare a snow emergency when it is determined that actual or expected precipitation of snow will create hazardous or dangerous highway conditions for vehicular or pedestrian traffic. One hour after a snow emergency has been declared and during its existence the following are in affect:

- **Parking is prohibited on the odd numbered side of the street unless there is no off-street parking available at or within 300 feet of the property**

- **Anyone driving a vehicle without chains or snow (all-weather) tires that becomes stalled, incapable of moving or left unattended is in violation of the snow emergency provisions**
- **Any vehicle parked, stalled, incapable of moving under its own power or left unattended upon any street or road of the Township may be remove or towed by the Police Department**



LIFE-SAVING ACTIONS - Sgt. Bill Hopkins, left, and Ofc. Matt Cerasuolo, center, received commendations from Police Chief Stan Turtle for their actions that resulted in saving the life of a choking victim. The officers responded to local restaurant and found a man choking on food and unable to breathe. They performed the Heimlich maneuver and when that was not successful, continued with stomach thrusts and CPR which dislodged the food and cleared the victim's airway.





Arena Tree & Landscape Specialists LLC

Commercial/Residential

- Tree Removal and Pruning
- Landscape Design & Installation
- Firewood

15% off any Tree Service
Ask about Free Firewood Delivery

Expires 2/21/19

Licensed and Insured

www.arenatreespecialists.com

484-868-7084

Waterproof Flooring ~ Harwood and Carpet

A&E FLOORING

Owned & Operated
in Lower Providence

**Visit website for
discounts
and coupons!**

3808 Ridge Pike • Collegeville

610-831-5942

WWW.AANDEFLOORING.COM

Serving All Of Montgomery County

Showroom Hours: Mon, Tues, Thur, Fri 9am - 4pm
Wed 9am - 8pm • Sat 10am - 3pm



www.AandEf flooring.com

**Residential &
Commerical
FLOORING**

- Family Owned & Operated
- In Business Since 1997
- Expert Installation
- Friendly Professional Service
- "Green" Products
- Quality Name Brands
- Financing Available
- Fully Insured



Szpindor-Meyers Funeral Home, P.C.

101 North Park Avenue • Trooper, PA 19403

(610) 539-8010 • Fax (610) 635-0284

www.meyersfh.com

James T. Meyers
Supervisor



Timothy J. Meyers
Licensed in PA and DE

Bacchi Funeral Home & Crematory, Ltd.

805 DeKalb Street (Route 202) • Bridgeport, PA 19405-1211

(610) 272-1941 • Fax (610) 278-6683

www.bacchifh.com

Darryl R. Bacchi
Supervisor

Francis X. Givnish
Licensed in PA and NJ

VALLEY FORGE ANIMAL MEDICAL CENTER

610-935-6838



**Complimentary office visit
for new clients!**

Dr. Ray Farmand

1260 Valley Forge Road

(Route 23) Suite 105

Phoenixville, PA 19460

valleyforgeveterinarian.com



JBP Landscape Contractors

Servicing the Philadelphia Area since 1987



Discount offered* -
Valid at time of estimate only*

Ponds, Waterfalls & Fountains • Annual & Perennial • Stone Design
Lawn Maintenance • Walls, Walkways & Patios
Landscaping Timber Installation

959 School Street Collegeville PA 19426 ♦ 610-489-2577

www.jbplandscape.com

TOSCO

Pizza and Italian Restaurant

610.539.6800
ToscoPizza.com

2908 West Main Street
Eagleville, PA 19403

TOSCO

CATERING

info@ToscoCatering.com
ToscoCatering.com

Caterina
610.476.3172

Public Works Winter Weather Reminders

Where to Go for Snow Info

As always, your cooperation is appreciated to help us make sure Township roads are maintained during inclement weather. Important snow removal information is posted on the Snow Info webpage: www.lowerprovidence.org/public-works/pages/snow-info.

Here are some important reminders:

- Please keep in mind that it is almost impossible to keep snow from being deposited at driveways during plowing (see the shoveling tip at bottom)
- Do not place or blow snow into the street
- If there is a fire hydrant on your property, please clear the snow away from the area around it leaving the markers intact
- Please make sure portable basketball hoops are moved out of the way of snow plows. We're trying to make sure the streets can be cleared and prevent damage to plow vehicles and the basketball nets.



It's the Law

State law requires that vehicles be completely clear of snow and ice and headlights be on when windshield wipers are in use. Daylight running lights, a standard feature on most cars these days, are not enough. It is necessary for drivers in vehicles with daytime running lights to turn on their headlights in order to activate their taillights.

Mailbox Damage

It is possible that some residential mailboxes will suffer damage during a snowstorm. If damaged is caused by snow or ice hitting the mailbox or due to deteriorated materials, repair or replacement is the homeowner's responsibility. If it is believed that the damage is the result of direct contact with a plow truck, please call the

Public Works Department, 610-635-3525, after the storm has subsided and within 48 hours, and we will evaluate the damage to determine responsibility.

Sidewalks and Snow

Property owners and tenants of properties bordering public streets are required by Township Ordinance to thoroughly clear a pathway at least 30 inches wide in the sidewalk within 48 hours after it stops snowing. In ice or sleet events, tenants/owners are required to cover the sidewalk with ashes, sawdust or similar materials. Placing snow in the roadway or gutter is prohibited (Ordinance 120-34).



A smart way to shovel your drive

How to reduce the possibility of getting a huge pile of snow in your driveway opening when snowplows clear your street:

Make snow collection pocket

Clear an area for the snow pushed by the plow

Shovel in same direction as traffic - Pile snow downstream of the plow



PAINTLESS DENT REPAIR

**AT 24 HOUR
CAR WASH
FRANKLIN MAPS**

DONE IN AS LITTLE AS 20 MINUTES!

SCHEDULE TODAY!

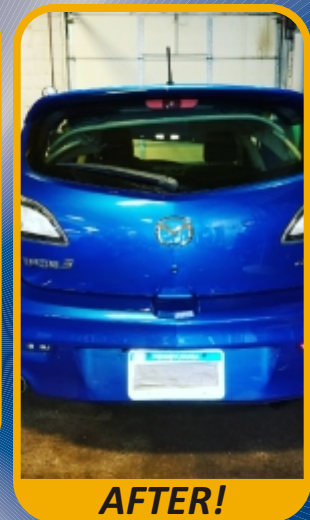
NO PAINTING REQUIRED!

610-256-6447

333 S. Henderson Rd., King of Prussia



Before...



AFTER!

Parking Lots Are Riskier Than You Think

More than 50,000 crashes occur in parking lots and garage structures annually, resulting in 500 or more deaths and more than 60,000 injuries. And, around the holidays, parking lots become even more dangerous.

Auto insurers report the number of claims spike on Black Friday and run above normal throughout the holiday shopping season. The number of incidents is probably higher than insurance claims indicate, as many fender-benders go unreported.

So Many Distractions

Thousands of pedestrians end up with broken bones, tissue damage or even worse because of cell phone or other distractions in parking lots.

In a National Safety Council public opinion poll, 66% of drivers nationwide said they would make phone calls while driving through parking lots. Respondents also said they would:

- Program GPS systems (63%)
- Text (56%)
- Use social media (52%)
- Send or receive emails (50%)
- Take photos or watch videos (49%)

NSC found teens (59%) were more likely to engage in personal grooming than adults (53%) while driving in parking lots, but less likely to be on the phone (60% vs. 66%).

During the hectic holiday season, drivers and pedestrians also are likely to be distracted by extensive to-do lists and are hurriedly trying to get from one place to another.

Stay Alert

Safety isn't guaranteed just by driving slowly in parking lots. Following are some safety tips for drivers courtesy of the Oswego (IL)

Police Department:

- Stay in lanes and avoid cutting across lots
- Drive slowly and use directional signals
- Anticipate the actions of other drivers
- Obey stop signs and no-parking signs
- When backing out, be mindful of vehicles and pedestrians
- Watch for small children and parents with baby strollers

Tapping into Technology

NSC analysis of government data indicates more than one-third of pedestrian deaths in parking lots result from backup incidents. Many vehicles today are equipped with backup cameras, which provide a wide view behind a vehicle operating in reverse, but that view may not be clear if the camera lens becomes obstructed.

Three safety reminders:

- It's best to conduct a quick, 360-degree walk-around before backing, keeping an eye out for low-lying objects
- Don't rely completely on technology; look over your shoulder and use your mirrors as you back up
- When parking, pull through on arrival whenever possible and if it works with the flow of traffic

Monitoring systems can alert drivers of vehicles in blind spots. Typically, drivers are warned of another vehicle's presence via symbol, sound or vibration. These systems may not detect motorcycles, smaller objects or people, however.

Other Parking Lot Pitfalls

Inadequate pavement striping, potholes or cracks, lack of signage, debris, poor lighting,

A Message from



puddles, and snow and ice also can lead to pedestrian injuries. Slips, trips and falls are common in parking lots, and falls in general are the leading cause of death for older adults.

Choosing the right parking spot can go a long way toward deterring theft and crime. Consumer Reports provides some simple safety rules:

- Pick spots that are well-lit and close to stores you will be shopping at
- Lock your doors
- Store purchases in places that are out of sight (in the trunk or tucked under dark-colored blankets)

Large parking lots, such as those found at shopping malls, are considered most vulnerable to crime, according to the Urban Institute Justice Policy Center. One way for consumers to steer clear of trouble is to pick a lot where pedestrian traffic is restricted and video surveillance equipment is used to monitor the facility.



National Safety Council ~ nsc.org

Sewer Authority News

SEWER LINE REPLACEMENT WORK

The most recent Sewer Authority project that was done has proven to be very successful in removing I/I* from the Sanitary Sewer. The main sanitary sewer lines and laterals were replaced on the following streets:

- Village Green Lane, Highgate Road, Long Meadow Drive and North Midland Avenue
- North Park Avenue between Village Green Lane and Foster Avenue
- Martha Lane between Deerfield Drive to Long Meadow Drive

**Inflow and infiltration (I/I) is clear water that enters the sewer system from a variety*



of sources. Infiltration occurs when groundwater seeps into sewer pipes through cracks, leaky pipe joints and/or deteriorated manholes which may cause sewage volumes to exceed design capacity.

RATE INCREASE

The increase in the bill you received on January 1, 2019 is necessary to offset a significant increase in our cost to treat sewage at the Oaks Waste Water Treatment Plant operated by the Lower Perkiomen Valley Regional Sewer Authority (LPVRS). In November 2018, LPVRS increased the amount we pay for sewage treatment by \$24.00 per unit per year.

Lower Providence Township Sewer Authority (LPTSA) IS NOT increasing its collection fees. The increase in your quarterly invoice is a direct pass through of the treatment charge.

Residential Customers: The new rate will be \$332.00 per year per unit or **\$83.00 per quarter per unit** which is divided between LPTSA - \$38.00 - for collection and LPVRS - \$45.00 - for treatment which is an increase of \$6.00 per quarter.

Non-Residential Customers: This includes all commercial, industrial, schools, clubhouses, fire houses, office, banks, hospitals,

churches, chapels, institutions, and any other non-residential users. The rate is **\$45.00 per assigned UFU (user fee unit) per quarter, plus \$1.41 per 1,000 gallons of water** (as measured by the water bill promulgated to each non-residential user) which is consumed during the billing quarter, provided, however that the minimum sewer rental charge for each non-residential improved property shall be \$38.00 per quarterly billing period in addition to the charge related to UFUs.

PAPERLESS BILLING

Get your bill sooner! Sign up to receive your monthly sewer bill by email. If you haven't already signed up go to <http://www.lowerprovidence.org/sewer.htm> to complete the form. Past due and/or shut off notices will not be emailed. They will be mailed to you in paper form. Emailed bill(s) will come from "sewerbill@lptsa.org".

The Sewer Authority wants our customers to know that our employees are always available during regular business hours by calling 610-539-6161 to address emergency situations. After hours emergencies, please call 1-800-379-5713. If you should have a backup in your outside line, contact us so that we can verify that it is not being caused by a blockage in our main line before you call your plumber.

How To Dispose Of...

Household Hazardous Waste

Hazardous waste materials are not only dangerous for you and your health, they are dangerous to the environment too, and should never go into the regular trash. Some leftover household products that can catch fire, react, or explode under certain circumstances, or that are corrosive or toxic are considered household hazardous waste. Products, such as paints, cleaners, oils, batteries, and pesticides can contain hazardous ingredients and require special care when you dispose of them.

Montgomery County sponsors Household Hazardous Waste (HHW) collection events at different locations throughout the county on specified days between the months of April and October. This program is a community service to the residents of Montgomery County and the four Southeastern Pennsylvania County Region (Bucks, Chester, Delaware, and Philadelphia counties) only and is not open to businesses, institutions, or industry. The regional partnership allows residents of each county the opportunity to attend any of the events hosted in the region.



For information on what can and cannot be taken to an event, how to prepare items for collection, drop-off guidelines, and the 2019 collection schedule, visit www.montcopa.org/637/Recycling-Information.

Electronics

Pennsylvania state law requires that televisions and computers be recycled and prohibits disposal as trash. J.P. Mascaro offers pickup for a fee. Call 1-800-432-1616 for details. Best Buy and Staples stores run a year-round electronics recycling programs accepting computers and various electronics - **no TVs or monitors**. Items will be taken for recycling at no charge and with no purchase required. Check their websites for details.

Visit www.montcopa.org/707/Electronics-Program for additional disposal alternatives for TVs and other electronics.

Prescription Medicine

A medicine return box is available at the Lower Providence Township Police Department. The Medreturn box is sponsored by LPPD, Montgomery County DA's Office, PA District Attorney's Association, PA Commission on Crime and Delinquency, & PA Department of Drug & Alcohol Programs. Any controlled, non-controlled and over the counter medications will be accepted. Liquid products and creams in their original container, along with pet

medications will also be accepted. Syringes and illicit substances will not be accepted. Prescription medication need not be removed from its container. This program is anonymous and NO attempt will be made to identify an individual. Drop off hours: Monday-Friday, 7:00 am to 8:00 pm.

Got drugs?

Dispose of Your Excess Medication

Now you can **safely dispose** of **unused prescription and over-the-counter medications**

in a **MedReturn** Drug Disposal Unit

LOCATION: Lower Providence Township Police Department
100 Parklane Drive, Eagleville, PA 19403

AVAILABLE: Monday - Friday
7 am - 8 pm

ACCEPTED MEDICATIONS: Any controlled, non-controlled, over the counter medications & pet medications

NOT ACCEPTED: Syringes and illicit substances



KEYSER MILLER



Proudly Owned and operated by the
Keyser Family in Collegeville Since 1956.

Celebrating 61 Years in our community!

**Servicing all of your automotive
needs with Sales and Service**

Please visit us on the Web at
KeyserMillerFord.com

Or in person at
**8 East Main Street
Collegeville, PA
610-489-9366**

MILLER TURETSKY RULE & MCLENNAN

THE RIGHT ADVICE MAKES THE DIFFERENCE

ATTORNEYS & COUNSELORS AT LAW

- Business, Corporate Law & Non-Profits
- Criminal Defense
- Commercial Litigation
- DUI and Drug Related Charges
- Elder Law
- Employment
- Expungement of Criminal Record
- Family / Divorce Law
- Franchising
- Insurance Coverage
- Juvenile Offenses
- Leases
- Liquor Licenses
- Personal Injury
- Probation and Parole Violations
- Real Estate / Zoning
- Special Needs Planning
- Tax Assessment Appeals
- Theft
- Trademark, Copyright & Trade Secrets
- Traffic Violations
- Wills, Trusts, Estate Planning & Administration

Receive a 15% discount by mentioning this ad.

FREE CONSULTATIONS AND CONVENIENT HOURS

3770 Ridge Pike (Level Road & Ridge Pike) Collegeville, PA 19426
Telephone 610-489-3300 • Facsimile 610-489-1157
www.millerturetsky.com

9,000 Homes see these ads!
Call 610-265-6277 to advertise your business or organization.

EXPERTS IN COMPREHENSIVE CARE FOR HANDS, WRISTS, ARMS, ELBOWS & SHOULDERS



We've got you covered from fingertip to shoulder

1.800.385.PHSC (7472)

Hand2ShoulderCenter.com

18 Convenient Locations in PA & NJ
including: King of Prussia, Lansdale,
Paoli, Havertown and Limerick



PHILADELPHIA
**HAND TO SHOULDER
CENTER**



17
SPECIALIZED
PHYSICIANS

18
STATE-OF-THE-ART
OFFICES





Library Events & Programs

19th Annual Wine Tasting

Mark your calendars for the 19th Annual Wine Tasting on Saturday, March 23 from 7:00 to 10:00 p.m. Several featured wines will be served with great food donated by local establishments. Music, a basket raffle, 50/50 drawing and televised "March Madness" basketball round out the evening. All proceeds benefit the Lower Providence Community Library. Tickets are on sale in the library and online at www.lowerprovidencelibrary.org

Cabin Fever Used Book Sale

Shop for books, DVDs and CDs for all ages for \$5.00 a bag. The Friends of the Lower Providence Community Library will run this fabulous sale from Saturday, Feb. 9 to Sunday, Feb. 24. Bags are provided.

Model Train Exhibit

The North Penn S Gaugers will have a model train exhibit in the Community Room on Friday and Saturday, February 1-2. Check the library for times. The free exhibit is open to train enthusiasts of all ages.

Author Adriana Trigiani One Book, One County 2019

Montgomery County Public Libraries will host author Adriana Trigiani, who will discuss her newest book, *Tony's Wife*, on Thursday, April 11. Ms. Trigiani will make two appearances at different locations in Montgomery County. A question and answer session and book signing will follow her presentations. Times, locations, and ticket information will soon be available through the library.

CHILDREN'S PROGRAMS

Children's programs are provided by a donation from the Friends of the Lower Providence Community Library.

Weekly Story Time Programs

Mondays & Tuesdays
10:30 am - Infants-2 yrs.
11:15 am - Older 3-4 yrs.

Thursdays
(kids only/adults stay in library)
10:30 am and 2:00 pm
4 yrs. & up

Saturday
10:30 am - Infants-3 yrs.
11:15 am - 4 yrs. and up

Special Programs

Coyote Saves the Day

Interactive puppet show, ages 2-6
Monday, Jan. 21 at 10:30 am

Musical Storytelling

Story time with musical instruments
Monday, Feb. 18 at 10:30 am

Giggle Magic: Silly Seuss

Comedy, magic & dance, ages 2-6
Tuesday, March 19 at 10:30 am

Terrific Turtles

Live turtles from Riverbend Nature Center, ages 4-6
Thursday, April 4 at 1:00 pm

The Reason for a Flower

Nature science for preschool
Thursday, May 9 at 1:00 pm

TEEN PROGRAMS

Teen programs are provided by a donation from the Friends of the Lower Providence Community Library.

Teen Advisory Board (TAB)

Teens grades 7-12 meet to plan activities, help the library, and earn community service credit, Tuesday, Feb. 5 and the 1st Tuesday of each following month from 7:00-8:00 pm.

ADULT PROGRAMS

Adult programs are provided in part by a donation from the Audubon Women's Club.

Weekly

Yoga - \$5.00 per session
Mondays 5:45-6:45 pm and
Fridays 3:15-4:15 pm

Meditation

Mondays, 7:15 pm

Cercle Francaise

French conversation group
Tuesdays, 10:30 am - noon

Mahjong

Tuesdays, 12:30 - 3:30 pm

Craft Club

Wednesdays, 10:00 - noon

Chair Yoga - \$5.00 per session

Wednesdays, 1:30 - 2:30 pm

Canasta

Thursdays, 11:45 am - 2:00 pm

Monthly

Afternoon Book Discussion Group
3rd Monday, 1:00 pm

Evening Book Discussion Group

2nd Wednesday, 7:00 pm

A Different Kind of Book Club

3rd Tuesday, 6:30 pm

Friends of the Library

2nd Thursday, 7:00 pm

Memoir Writing Circle

1st Monday, 7:00 pm

Adult Coloring Book Class

Monday, Feb. 4, Mar. 4, Apr. 1 at 1:00 pm

Sleeping Mat Project

Jan. 23, Feb. 6 & 20, March 13 & 27 at 10:00

Movie Matinee

Twice monthly, Monday at 1:30 pm, check library for dates and titles

Special Programs

Turkish Coffee Reading

Wednesday, Feb. 6 from 5:30-8:15 pm by appointment

Mastering Your iPhone

Friday, Feb. 8 at 1:00 pm

Art Class

Friday, Feb. 15 and Feb. 29 at 10:30 am

Retirement Shield

Thursday, Feb. 28 at 6:30 pm

Slow Down and Look:

Art Appreciation
Friday, March 15 & 22
10:30 am - noon

Ancestry 101

Friday, April 5 & 12
10:30 am - noon

Technology Programs

Web Design - Thursday, Feb. 7 & 21 from 6:30 - 8:00 pm

Microsoft Word Basics -


Wednesday, March 20
10:30 am

Microsoft Publisher Basics -

Wednesday, Apr. 4 at 10:30 am

Hundreds of free online technology classes are available 24/7 on Lynda.com. Access through the library's website under eLibrary and login with your library card.


To register for programs or check on more programs coming up, visit the library website at www.LowerProvidenceLibrary.org or call the Library at 610-666-6640.



Cabin Fever Used Book Sale


\$5.00-a-Bag

Saturday, Feb. 9
to Sunday, Feb. 24



Fill a bag with books, DVDs, CDs of your choice, bags are provided.

Sale sponsored by the Friends of the Lower Providence Community Library.



50 Parklane Drive, Eagleville, PA

Lower Providence Community Library

19th Annual Wine Tasting



Saturday, March 23, 2019
7:00-10:00 p.m.

Enjoy a selection of fine wines, great food from local restaurants, basket raffle, 50-50 drawing, music.

Tickets: \$50 in advance,
\$55 at the door



All proceeds benefit the Library.

EST. 1888

MOORE, SNEAR & RUGGIERO

FUNERAL HOME & CREMATORY, INC.

*Family Owned and Operated for Nine Generations
Celebrating 130 Years of Service*



224 West Main Street
Trappe, PA 19426
610-489-7900
Maureen R. Ruggiero,
Supervisor
www.msrfh.com

Where Your Loved One Never Leaves Our Care



MATTERN'S

**THE PERFECT APPLIANCE
CAN TURN YOUR HOUSE
INTO A HOME...**

*Get the best selection from
the best trained people!*

Refrigerators | Ranges | Grills | Dishwashers | Washers | Dryers | And More!

2845 W. Ridge Pike, Trooper, PA
610-539-5505  
www.matternsappliances.com

**Serving the local community
for over 70 years.
Family owned business.**

9,000 Homes see these ads!
Call 610-265-6277 to advertise your business or organization.





The Meadows
— AT —
SHANNONDELL

PERSONAL CARE
MEMORY CARE

**Your new choice in living assistance
is now your best choice**

With new residences at The Meadows now open to non-residents of Shannondell, your family's new choice in quality living assistance and memory care is now your best choice.



6000 Shannondell Dr., Audubon, PA 19403 | 610.908.3800 | meadowsatshannondell.com

Parks & Recreation Department



Department of Parks & Recreation
100 Parklane Drive
Eagleville, PA 19403
610-635-3543
www.lptrec.com

PARKS & RECREATION OFFICE STAFF

Karl A. Lukens
Parks & Recreation Director
Karen M. Hegedus
Recreation Superintendent
Karen L. Barron
Administrative Assistant

PARKS & RECREATION BOARD MEMBERS

Beth Ann Mazza, *Chair*
Erin DiPaolo, *Vice Chair*
Jean Akers
John Neilson, Jr.
M. Joseph Clement
Katherine McGrath, *Student Rep. (N-V)*
Dylan Pompe, *Student Rep. (Alt.)*
Reilly Smith, *Student Rep. (V)*
Kendall Ozorowski, *Student Rep. (V)*

The Lower Providence Township Parks and Recreation Department strives to provide professional, multi-faceted leisure services to the community.

Our mission is based on a passion for enriching the lives of our residents through recreation, creating natural beauty and maintaining a safe, clean park environment. We foster the responsibility for developing, supporting and administering recreational activities and facilities that enhance the quality of life for all our residents.

LIKE LOWER PROVIDENCE TOWNSHIP ON FACEBOOK, INSTAGRAM & TWITTER!

Keep up to date with all the fun things going on in the Lower Providence community!

Follow Lower Providence Township on Facebook, Instagram & Twitter @LowerProvTwp to get the latest on Township news and happenings!



Check out the website for Lower Providence Township Parks and Recreation!

www.lptrec.com

To get started, please visit the website and create an account with all your household information. The data provided - emergency contacts, medical information, etc. - will help us better serve you. This information will also be automatically placed into your registration forms.



2019 Winter/Spring Recreation Programs are now on www.lptrec.com so check out all the fun and exciting recreation programs, special events and bus trips for everyone!

- Firebird Theater Acting Classes
- Zumba Fitness Class
- Yoga Classes
- Cooking Programs
- Kids Night Out Programs
- AARP Safe Driving Course
- AND MUCH MORE!

You Snooze...You Lose! Nothing cancels a good class quicker than waiting until the last minute to register. If there are not enough registrations by a certain date, the program will be cancelled! No walk-ins accepted at program site, so please register early!

RECREATION PROGRAM NOTES:

Early Registration Saving (ERS): With the ERS, you'll save an average of 10% just for registering early! To qualify, register more than 7 days before the start date of a program. (Does not include bus trips.)

2019 Bus Trips & Tours

New York On Your Own
Washington DC National Zoo
Statue of Liberty & Ellis Island
Baseball Hall of Fame, Cooperstown NY
Gettysburg

Radio City Christmas Spectacular
Check website in January for more details and to register visit www.lptrec.com

ATTENTION

BIGGER ADS GET BIGGER RESULTS!

ADVERTISE YOUR BUSINESS.

**OVER 81,000 HOMES ALONG THE MAIN LINE
& 422 CORRIDOR RECEIVE OUR NEWSLETTERS!**

Lower Providence
Upper Merion
Tredyffrin

Easttown
Willistown
Newtown Square

Radnor
Haverford
Marple

Call for pricing & distributions
Edward 610-265-6277
Edward13.FranklinMaps@yahoo.com

Parks & Recreation Department

MARK YOUR CALENDAR! 2019 Lower Providence Township Community Special Events



Easter Egg Hunt
Saturday,
April 6th
10:00 am
Eagleville Park
Rain Date:
Saturday,
April 13th



24th Annual Independence Day Fireworks Show
Thursday,
July 4th
6:30 pm
Eagleville Park
Rain Date:
Saturday,
July 6th



32nd Annual Community Fall Festival
Saturday,
October 5th
11:00 am - 4:00 pm
Eagleville Park
Rain Date:
Sunday, October 6th



11th Annual Community Tree Lighting
Friday, December 6th - 6:00 pm
Eagleville Park

SPECIAL WAYS TO REMEMBER LOVED ONES

*Consider tree, bench
or brick donations*

Memorial trees, benches and Walk of Honor brick pavers are welcomed donations at sites within the Lower Providence Township Parks system and are special ways to honor the memory of a loved one.

If you or your family enjoy a particular park and wish to place a lasting memorial to a family member, friend or pet consider donating a tree or bench. Memorial brick pavers are added to the Walk of Honor in front of the Township's Veterans' Memorial located at the Administration Building.

Memorial gift forms are available at the Administration Building or on-line at the Township website www.lptrec.com

The Township must approve any wording that will appear on any plaques and/or bricks. Once the form is received by the Parks and Recreation Department, we will contact you to confirm your donation.

If you have any questions or would like more information about the memorial donation programs, contact Karl Lukens, Director of Parks and Recreation at 610-635-3543 or klukens@lowerprovidence.org.



DISCOUNT SKI TICKETS

Lower Providence Township offers "cool" savings on discount ski mountain tickets! These ski lift tickets may be purchased at the Township Building, Monday - Friday, between the hours of 8:00am and 4:30pm. Cash and most major credit cards are accepted to purchase tickets. No personal checks, refunds or exchanges. Tickets will be available through March 2019. Call ahead to confirm availability.

Ski Areas Include:

Bear Creek

Big Boulder/Jack Frost

Blue Mountain

Camelback

Shawnee Mountain

Elk Mountain

Corporate Event Sponsorship Opportunities

Platinum Sponsor: \$5,000 & UP

Named sponsor for (4) events
Check presentation photo opportunity (oversized check provided by sponsor)
Placement of banner at events (banner provided by sponsor)
Name / logo on event shirts (where applicable)
Booth space at events
Listed as sponsor on all event marketing materials (e.g. Flyers, program booklets)
Listed on Sponsor Boards at events
Listed as Sponsor on Parks & Recreation website

Gold Sponsor: \$2,000 - \$4,999

Named sponsor for (2) events
Check presentation photo opportunity (oversized check provided by sponsor)
Placement of banner at events (banner provided by sponsor)
Name / logo on event shirt (where applicable)
Booth space at events
Listed as sponsor on all event marketing materials (e.g. Flyers, program booklets)
Listed on Sponsor Boards at events
Listed as Sponsor on Parks & Recreation website

Silver Sponsor: \$1,000 - \$1,999

Named sponsor for (2) events
Check presentation photo opportunity (oversized check provided by sponsor)
Name / logo on event shirt (where applicable)
Booth space at event
Listed as sponsor on all event marketing materials (e.g. Flyers, program booklets, website)
Listed on Sponsor Boards at events
Listed as Sponsor on Parks & Recreation website

Bronze Sponsor: \$500 - \$999

Named sponsor for (1) event
Check presentation photo opportunity (oversized check provided by sponsor)
Booth space at event
Listed as sponsor on all event marketing materials (e.g. Flyers, program booklets, website)
Listed on Sponsor Boards at event
Listed as Sponsor on Parks & Recreation website

Friend of the Parks: \$250 - \$499

Named Friend of the Parks for (1) event
Booth space at event
Listed as sponsor on all event marketing materials (e.g. Flyers, program booklets)

Community Partner: \$50 - \$249

Named Community Partner for (1) event
Listed as sponsor on all event marketing materials (e.g. Flyers, program booklets)

Lower Providence Township Parks & Recreation is happy to work with each sponsor to help them gain as much exposure as possible. We welcome any sponsor benefits not listed above and will consider them on a case by case basis.

Discount Movie Tickets

Lower Providence Township Department of Parks and Recreation offers discount tickets to the "Movie Tavern" & "Regal Entertainment Group" theaters in our area. These ticket vouchers may be purchased at the Township Building, Monday - Friday, between the hours of 8:00am and 4:30pm. Cash and most major credit cards are accepted to purchase tickets. No personal checks, refunds or exchanges.

Movie Tavern Tickets are \$8.50

Regal Entertainment Group tickets are \$9.50**

**Participating Regal Entertainment Group theatres include United Artists, Regal Cinemas & Edwards Theatres. Regal Entertainment Group ticket vouchers do not expire.

OVER 9,000 HOMES IN LOWER PROVIDENCE TOWNSHIP RECEIVE OUR NEWSLETTER!

ADVERTISE YOUR BUSINESS!



Lower Providence
Upper Merion
Tredyffrin

Easttown
Willistown
Newtown Square

Radnor
Haverford
Marple

View Publications at www.issuu.com/townshipnewsletters/stacks

For pricing & distributions call
Edward **610-265-6277**
Edward13.FranklinMaps@yahoo.com

Parks & Recreation Department

2019 SUMMER CAMP PROGRAMS!

Lil' Perkiomy ~ Camp Perkiomy ~ Perkiomy Trailblazers
Monday through Friday ~ Summer 2019

Summer Camp Information, Activity/Trip Calendars and Registration Forms will be available on www.lptrec.com

LIL' PERKIOMY

Monday - Friday
9:00 am - 12:00 noon
Children ages 4 & 5 years old

Lil' Perkiomy Camp is designed for preschool children aged 4 to 5 years old who may have been in a day care or preschool setting throughout the school year. Children will participate in games, arts & crafts, free play time and other activities. "Special Guests" are scheduled throughout the summer. A weekly activity sheet will be emailed to you so you can prepare yourself and your camper for loads of fun each week.

Lil' Perkiomy Camp site is managed by a qualified staff of a Site Supervisor along with Camp Counselors.

Lil' Perkiomy Camp Activity Calendar
will be available on the
Lower Providence Township website
www.lptrec.com in January 2019!

Registration Opens:

***Residents: FEBRUARY 1, 2019**

***Non-Resident: MARCH 1, 2019**

Camp Session I: June 17th to June 28th
Camp Session II: July 8th to July 29th
Camp Session III: July 22nd to August 2nd

CAMP PERKIOMY

Monday - Friday
8:00 am - 4:00 pm
Children who have completed
Kindergarten thru entering 5th grade

EXTENDED CARE OPTION
7:30-8:00 am AND/OR 4:00-5:00 pm

Camp Perkiomy is designed for children who have completed Kindergarten through entering 5th grade. Each week is different with a variety of activities including arts and crafts, organized games, off-site trips and special events. The weekly activity and trip sheet will be emailed to you so you can prepare yourself and your camper for loads of fun.

Each Camp Perkiomy site is managed by a qualified staff of Site Supervisor, Group Leaders and Camp Counselors.

Camp Perkiomy Activity & Trip Calendar
will be available on the
Lower Providence Township website
www.lptrec.com in January 2019!

Registration Opens:

***Residents: FEBRUARY 1, 2019**

***Non-Resident: MARCH 1, 2019**

Camp Dates: June 17th to August 2nd
No Camp:
Thursday, July 4th & Friday, July 5th

PERKIOMY TRAILBLAZERS

Monday - Friday
8:00 am - 4:00 pm
Youths who are entering
5th thru 8th grade

EXTENDED CARE OPTION
7:30-8:00 am AND/OR 4:00-5:00 pm

Perkiomy Trailblazers Camp is designed for youths who are entering 5th through 8th grades. The weekly activity and trip sheet will be emailed to you so you can prepare yourself and your camper for loads of fun. Each week is different with a variety of activities and organized games especially designed for this middle school age group.

Each Perkiomy Trailblazers Camp is managed by a qualified staff, specifically Site Supervisor, Group Leader, and Camp Counselors.

Perkiomy Trailblazers Activity & Trip
Calendar will be available on the
Lower Providence Township website
www.lptrec.com in January 2019!

Registration Opens:

***Residents: FEBRUARY 1, 2019**

***Non-Resident: MARCH 1, 2019**

Camp Dates: June 17th to August 2nd
No Camp:
Thursday, July 4th & Friday, July 5th



• COMMONWEALTH •

AUTO • TAGS


610-676-0040
2795 Egypt Road
Audubon, PA
www.commonwealthautotags.com

Marco Motors

Volvo Specialists
Foreign & Domestic Auto Repairs
PA State & Emission Inspection
Computer Diagnostics
4 Wheel Alignments

Phone: 610-489-7525 • Fax: 610-489-0281
Marcomotorsinc@gmail.com • www.Marcomotorsinc.com
Business Hours Monday thru Friday 8am to 5pm

3832 Germantown Pike, Collegeville, PA 19426



EVANSBURG FAMILY DENTISTRY
Azalea Sharifi D.M.D. Ph.D
610-489-7363

3801 Germantown Pike,
Collegeville, PA 19426
www.evansburgdental.com

Most dental insurances accepted.
In-house plans offered.

Fast ~ Affordable ~ Delicious

Speck's

BROASTER CHICKEN

610-489-2110
www.speckschicken.com

Your Community
Partner in Recovery



Eagleville
HOSPITAL

Eagleville.org | 1.800.255.2019



Redeemer
CHURCH

Sunday 10:00am • Audubon YMCA
All are Welcome
RedeemerBFC.org

Perfect Pooch

Daycare • Boarding • Training • Grooming




Open 7 Days A Week
All Breeds Welcome
Dogs Must Be Social
- Free Evaluation

3 Acre Facility With
Multiple Turf Yards

Spacious & Heated
Indoor Play Area

8+ Hours of Playtime

(610) 337-7698 | www.perfect-pooch.com | 200 King Manor Drive, KOP

LIBERTY MINISTRIES

THRIFT

25% OFF

entire purchase up to \$200

Cannot be combined with any other offer.
Some exclusions may apply. Offer applies to used merchandise only.
Accepted at all locations. Must present ad. Exp. 3/31/19

We have everything from Furniture, Books, Clothing,
Antiques, Accessories, Linens, Knick-Knacks, Appliances,
Toys, Kitchenware, and so much more!

For Other Locations & Hours Visit www.LibertyThriftStores.com

Liberty Thrift
3841 Ridge Pike • Collegeville, PA 19426 **610-831-9856**



100 Parklane Drive • Eagleville, PA 19403
www.lowerprovidence.org

Presorted
Standard
U.S. Postage
Paid
Bellmawr, NJ
Permit No. 612



Corropolesse
Italian Bakery
SINCE 1924

Visit our website for our other locations
CORROPOLESEBAKERY.COM

2809 EGYPT ROAD AUDUBON, PA 19403
610-630-3844
Hours: Mon-Fri 8am-6pm | Sat 8am-5pm
Sun 8am-3pm
(deli & groceries not included)



AEROBIC RHYTHMICS
Fitness & Results since 1989
A Unique Body Workout
All ages.
All abilities.
All fitness levels.

Over 30 years of experience
20+ Locations near you
www.AerobicRhythmics.com

Why Aerobic Rhythmics?
No gym fee or contracts!
AeroFlex, Aqua, Yoga & Pound

New Student Special
FREE CLASSES
For 1 Week
Aerobic Rhythmics
New Students Only!
With this coupon. Not valid with other offers or prior purchases. Offer expires 06/30/19

only **\$35** Month
Unlimited Classes
Aerobic Rhythmics
New Students Only!
With this coupon. Not valid with other offers or prior purchases. Offer expires 06/30/19

610-489-3180



Handcrafted Happy Hour

Chadwick's

Restaurant & Bar

Cocktails • Dining • Live Music

Visit mychadwicks.com • 2750 Egypt Rd • Audubon, PA 19403 • 610.382.9300



This Community Newsletter is produced for the Township of Lower Providence by Franklin Maps • 610-265-6277
All rights reserved® To Place An Ad Call Edward At Franklin Maps • 610-265-6277 • Edward13.FranklinMaps@yahoo.com