

The background features abstract, overlapping green geometric shapes in various shades of green, creating a modern and dynamic feel. The shapes are primarily triangular and polygonal, with some areas being more opaque than others, creating a layered effect.

# Focus Areas

Lower Providence Township Comprehensive Plan

# Steering Committee Meeting January 19, 2022

- ▶ Welcome & introduction
- ▶ Assignment summary and overview
- ▶ Breakout Rooms
  - ▶ Trooper
  - ▶ Eagleville
  - ▶ Park Pointe-Shannondell
  - ▶ Audubon
  - ▶ Evansburg (time permitting)
- ▶ Group Highlights
- ▶ Public Comment

[illegible]

# Site Visits

In December, four groups visited focus areas to observe and document conditions there:

- ▶ Explore (on foot, if safe to do so)
- ▶ Take notes and photographs
- ▶ Write down observations & recommendations





# Breakout Rooms

The breakout rooms will be recorded

We will recap our discussions when we regroup



# Focus Area Priorities

- ▶ Improve walking and biking connections throughout the township, especially:
  - ▶ Links between residential & commercial areas
  - ▶ Links between residential areas & recreation facilities.
- ▶ Make commercial areas more walkable, attractive, and thriving
  - ▶ Activate/Redevelop vacant sites
- ▶ Retain historic structures and sites
- ▶ Preserve open space & protect natural resources
- ▶ Others?

# General Focus Area Recommendations

- ▶ Complete and connect sidewalks/sidepaths along corridors, cross streets, and side streets
- ▶ Add more crosswalks and upgrade existing with high-visibility markings
- ▶ Access management: driveway consolidation, redesign open curb cuts, provide cross-lot access and rear access where possible
- ▶ Add additional landscaping, especially street trees
- ▶ Consolidate/bury utilities whenever possible
- ▶ Create pocket parks/parklets/plazas
- ▶ Gateway or landmark signage
- ▶ Activate vacant buildings/sites
- ▶ Retain historic structures

# Trooper

- ▶ High traffic volumes
- ▶ Busy intersections
- ▶ High commercial/retail activity
- ▶ Missing sidewalk connections
- ▶ Wide and frequent driveways
- ▶ Residential side streets
- ▶ Crosswalks are scarce and difficult
- ▶ Vacant and aging buildings





# Steering Committee Recommendations: Trooper

- ▶ Address sidewalk gaps
- ▶ Improve streetscaping & landscaping (replace chainlink fence, buffer sidewalks and fences)
- ▶ Support the formation of a Business Improvement District (BID) or similar organization
- ▶ Improve bus stops at Park & Ridge
- ▶ Add prominent crosswalk markings at signalized intersections
- ▶ Eliminate full-width driveways/curb cuts
- ▶ Improve large parking lots with landscaped bioswale islands
- ▶ Review zoning, look at uses allowed in the corridor
- ▶ Review zoning, for possible residential use updates
- ▶ Work with vacant property owners to explore purchase opportunities









# Eagleville

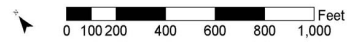
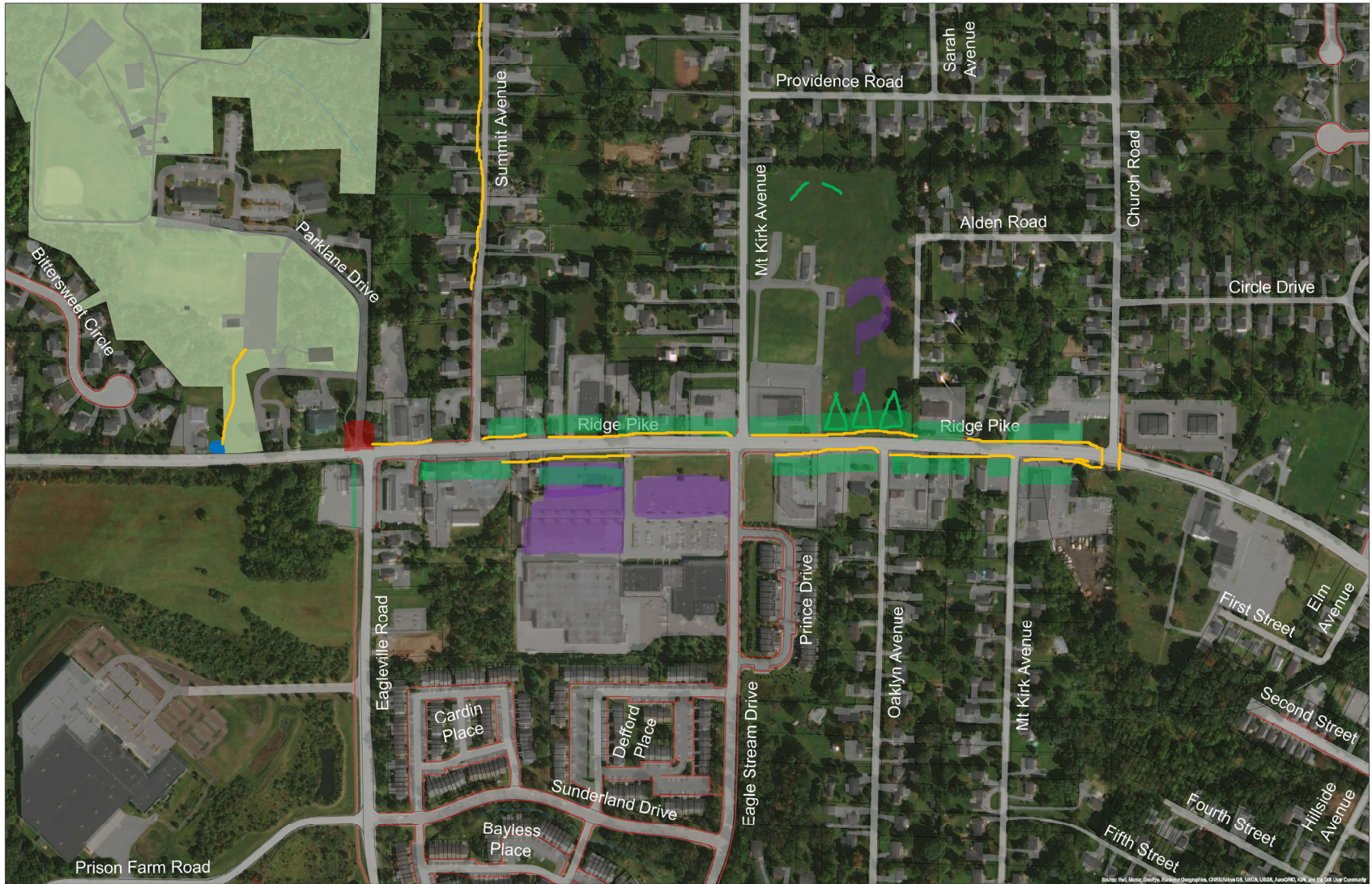
- ▶ Historic structures
- ▶ Municipal campus/community hub
- ▶ High commercial/retail activity
- ▶ Mixed residential community
- ▶ Missing sidewalk connections
- ▶ Dangerous bus stops
- ▶ Nearby parks
- ▶ Wide and frequent driveways
- ▶ Residential side streets
- ▶ Crosswalks are scarce and difficult
- ▶ Vacant and aging buildings



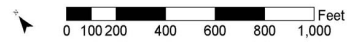
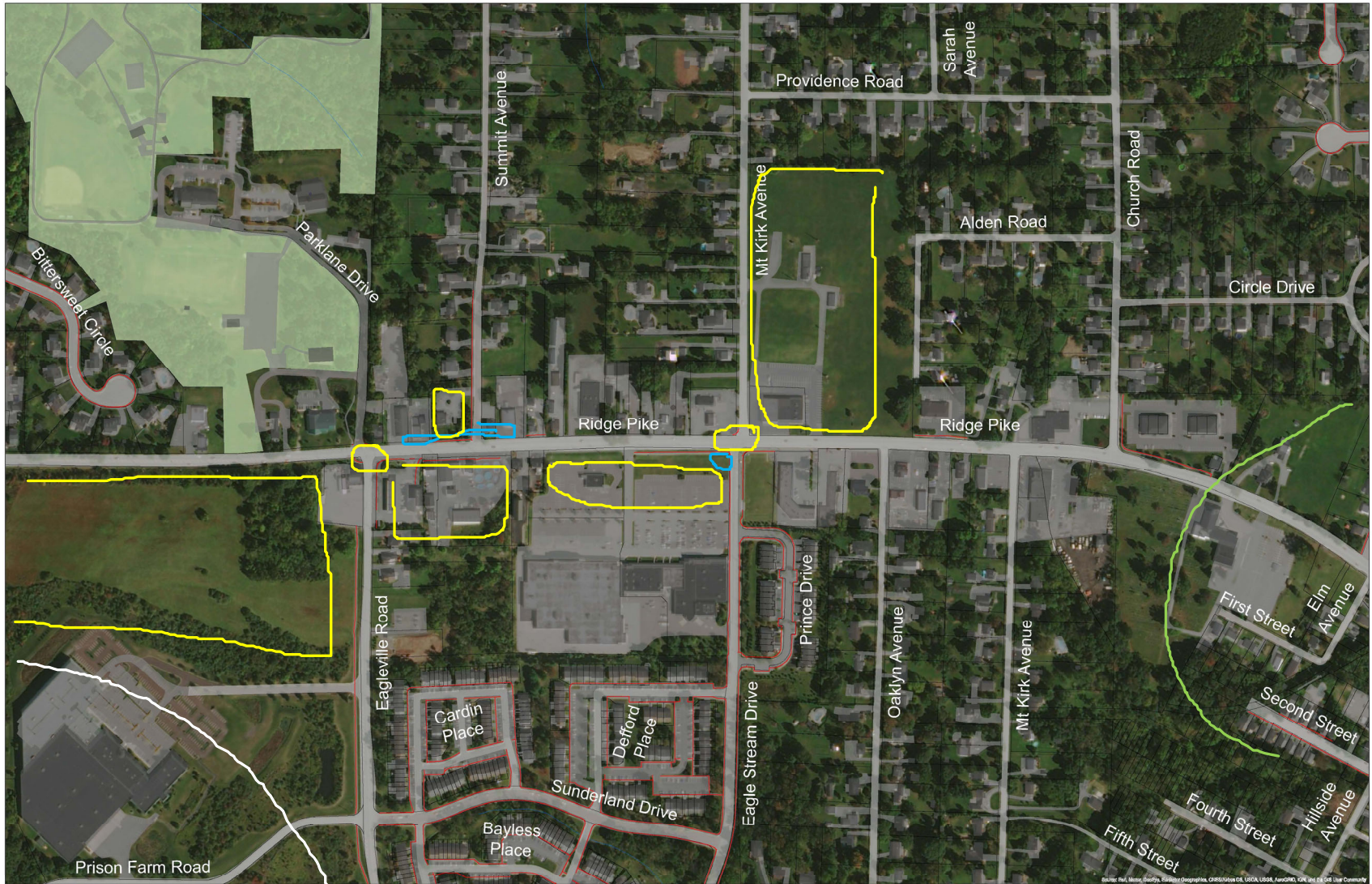


# Steering Committee Recommendations: Eagleville

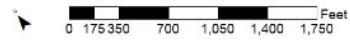
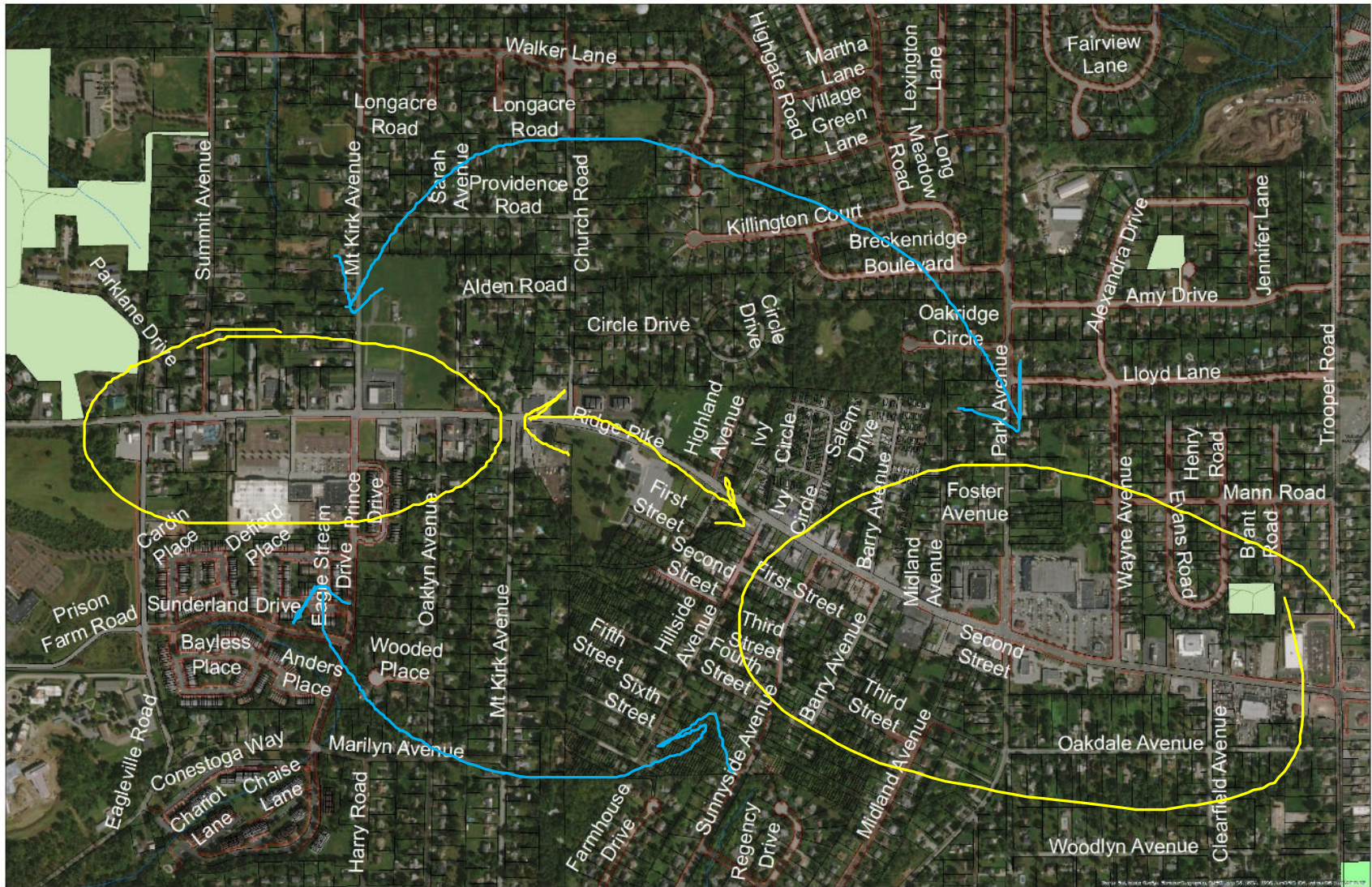
- ▶ Signage designating Eagleville
- ▶ Safety:
  - ▶ sidewalks & crosswalks
  - ▶ access management
- ▶ Aesthetics
  - ▶ Bury utility lines
  - ▶ Landscape
  - ▶ Redesign the entrance to the municipal center
  - ▶ Municipal center building
- ▶ Improvements/replacements
  - ▶ Create a community center
- ▶ Building façade improvement program
- ▶ Encourage disused land to be put to good use
- ▶ Better landscaping/design around the fire department













# Park Pointe-Shannondell

- ▶ Major regional employment center
- ▶ High commercial/retail activity
- ▶ Mixed residential community
- ▶ High traffic volumes, busy intersections
- ▶ Scarce and challenging crosswalks
- ▶ High transit activity
- ▶ Undeveloped land
- ▶ Close to parks and trails

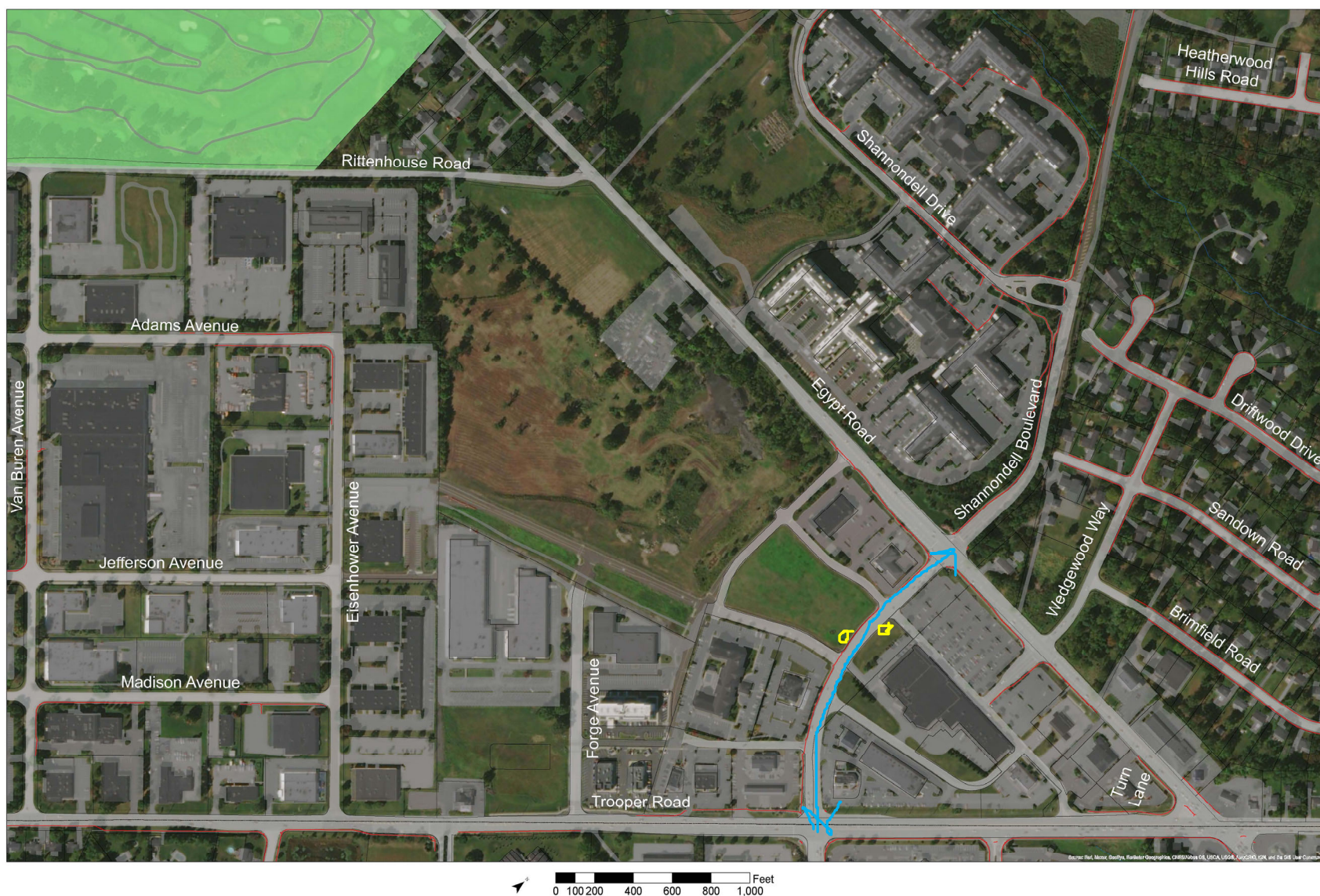


# Steering Committee Recommendations: Park Pointe - Shannondell

- ▶ Traffic improvements on Trooper and Egypt Roads
- ▶ Incremental development of appropriate uses (industrial/commercial or denser residential) on vacant sites
- ▶ Expand network of sidewalks and paths
  - ▶ Focus on Park Pointe
  - ▶ Concentrate on areas with highest use and safety









# Audubon

- ▶ Historic structures
- ▶ High commercial/retail activity
- ▶ Mixed residential community
- ▶ Missing sidewalk connections
- ▶ Vacant buildings
- ▶ Busy intersection
- ▶ Challenging crosswalks
- ▶ Dangerous bus stops
- ▶ Nearby parks and trails



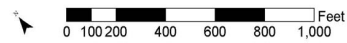
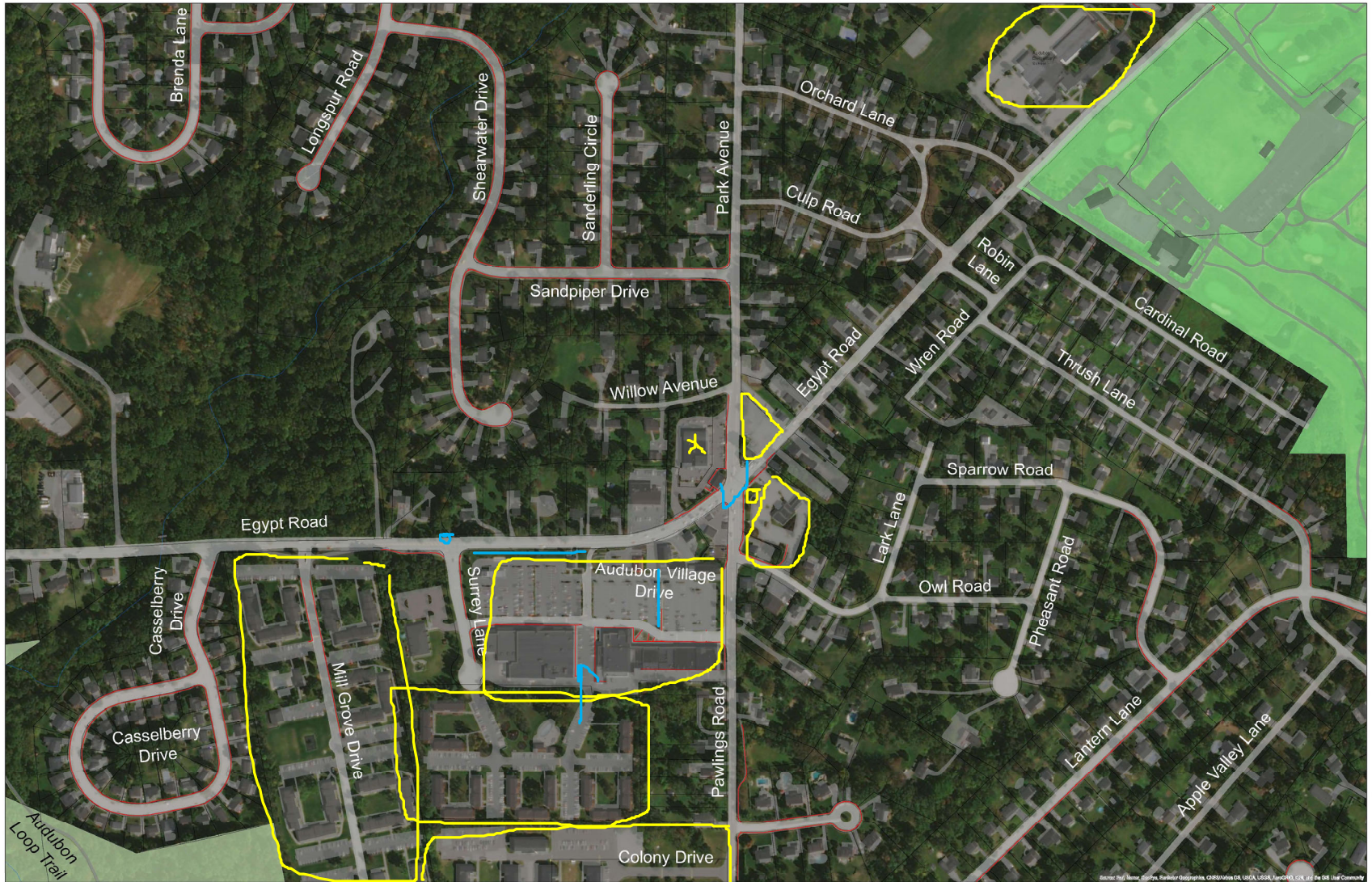






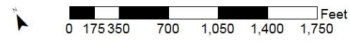






Source: Esri, DeLorme, GeoEye, TerraStar, GeoInformation Systems, Inc., USGS, AeroGRID, IGN, and the GIS User Community







# Evansburg

- ▶ Historic structures
- ▶ Mixed residential community
- ▶ Missing sidewalk connections
- ▶ Busy intersection
- ▶ Scarce crosswalks
- ▶ Nearby parks and trails
- ▶ Smaller area









# Group Highlights

- Share one key recommendation or top-priority project for each focus area



# Breakout Group Ideas

## Trooper

- ▶ Incentives for more mixed-use, façade improvements, more cohesive and inviting
- ▶ Landscaping and greenery - break up parking lots
- ▶ Identity - signage and character of village

## Eagleville

- ▶ Western end could be a new anchor strip - increased density closer to Ridge, mixed-use buildings.
- ▶ Grand entrance to municipal buildings





## Park Pointe - Shannondell

- ▶ Connect Shannondell, Audubon Square, and Park Pointe better, including better bus stops. Develop but deal with traffic in some way.
- ▶ Mixed-use (need not be vertical) with office, restaurant, residential, retail, etc.
- ▶ What is the right place for warehouse uses?

## Audubon



# Next Steps

- ▶ Steering Committee Meetings
  - ▶ February 16 - Future Land Use
  - ▶ March 16
- ▶ Possible Public Event May 4 or thereabouts
- ▶ Public Comment