

Lower Providence Comprehensive Plan Steering Committee - August 19, 2020

Agenda

- 1) Introductions and Icebreaker activity (15 minutes)
- 2) Overview of the comprehensive planning and Steering Committee responsibilities (20 minutes)
- 3) Introduction and Overview Q&A (5 minutes)
- 4) Demographics Presentation (45 minutes)
- 5) Demographics Q&A (5 minutes)
- 6) Closing Exercise (15 minutes)
- 7) Public Comment (15 minutes)

Introductions



John Miklos

Community Planner

Montgomery County Planning
Commission

jmiklos@montcopa.org

(610) 278 - 3554

Comprehensive Planning

What is it? How do we do it?

What is a Comprehensive Plan?

- ▶ Describe a long-range vision for the community
- ▶ Establish policies, priorities, and guidelines to achieve the community's goals
- ▶ Three main characteristics:
 - ▶ Geographically comprehensive
 - ▶ Comprehensive in subject matter
 - ▶ Long-range timeframe

Requirements of a Comprehensive Plan

Pennsylvania's *Municipalities Planning Code* (MPC) requires certain elements:

- ▶ Statement of **Objectives**
- ▶ Plan for **Land Use**
- ▶ Plan to meet **Housing** needs
- ▶ Plan for **Movement** of people and goods
- ▶ Plan for **Community Facilities and Utilities**
- ▶ Plan for the protection of **Natural and Historic Resources**
- ▶ Plan for the reliable supply of **Water**
- ▶ Discussion of **Short- and Long-Range Implementation Strategies**
- ▶ Statement of **Interrelationships** between plan components
- ▶ Statement of **Consistency** with comprehensive plans of adjacent municipalities and the county

Additional Comprehensive Plan Features

- ▶ Employment and Economic Development
- ▶ Sustainability/Resilience Planning
- ▶ Equity and Inclusion
- ▶ Public Health and Wellness
- ▶ Geographic Focus Areas

Other Plans in Lower Providence

Lower Providence Township Comprehensive Plan (adopted 2002)

The previous township comprehensive plan

Parks, Recreation, and Open Space Plan (in progress)

An update of the township's parks and open space plan

Montco2040: A Shared Vision (adopted 2015)

The county comprehensive plan

The Role of the Steering Committee

Now:

- ▶ Review Scope of Work
- ▶ Review Schedule/Timeline

Ongoing:

- ▶ Inform the public
- ▶ Review reports and drafts
- ▶ Provide feedback
- ▶ Develop goals for the plan

Review the Scope of Work

(See Proposed Scope of Work)

The Comprehensive Planning Process

- ▶ The Kickoff
- ▶ Analysis
- ▶ Public Engagement Round 1
- ▶ Synthesis and Planning
- ▶ Public Engagement Round 2
- ▶ Draft Final Plan
- ▶ Adoption



The background features abstract, overlapping green geometric shapes, primarily triangles and polygons, in various shades of green, creating a modern and dynamic visual effect.

Demographics

Current Statistics and Recent Trends

Where Does Demographic Data Come From?

US Decennial Census

- ▶ Constitutionally mandated
- ▶ Full count of USA residents
- ▶ Collected once every 10 years
- ▶ Started in 1790
- ▶ Fairly simple- only 10 questions

American Community Survey (ACS)

- ▶ Replaced the long-form census
- ▶ Samples 10% of households
- ▶ Collected each year
- ▶ Started in 2007
- ▶ Longer survey

Township Line
Road

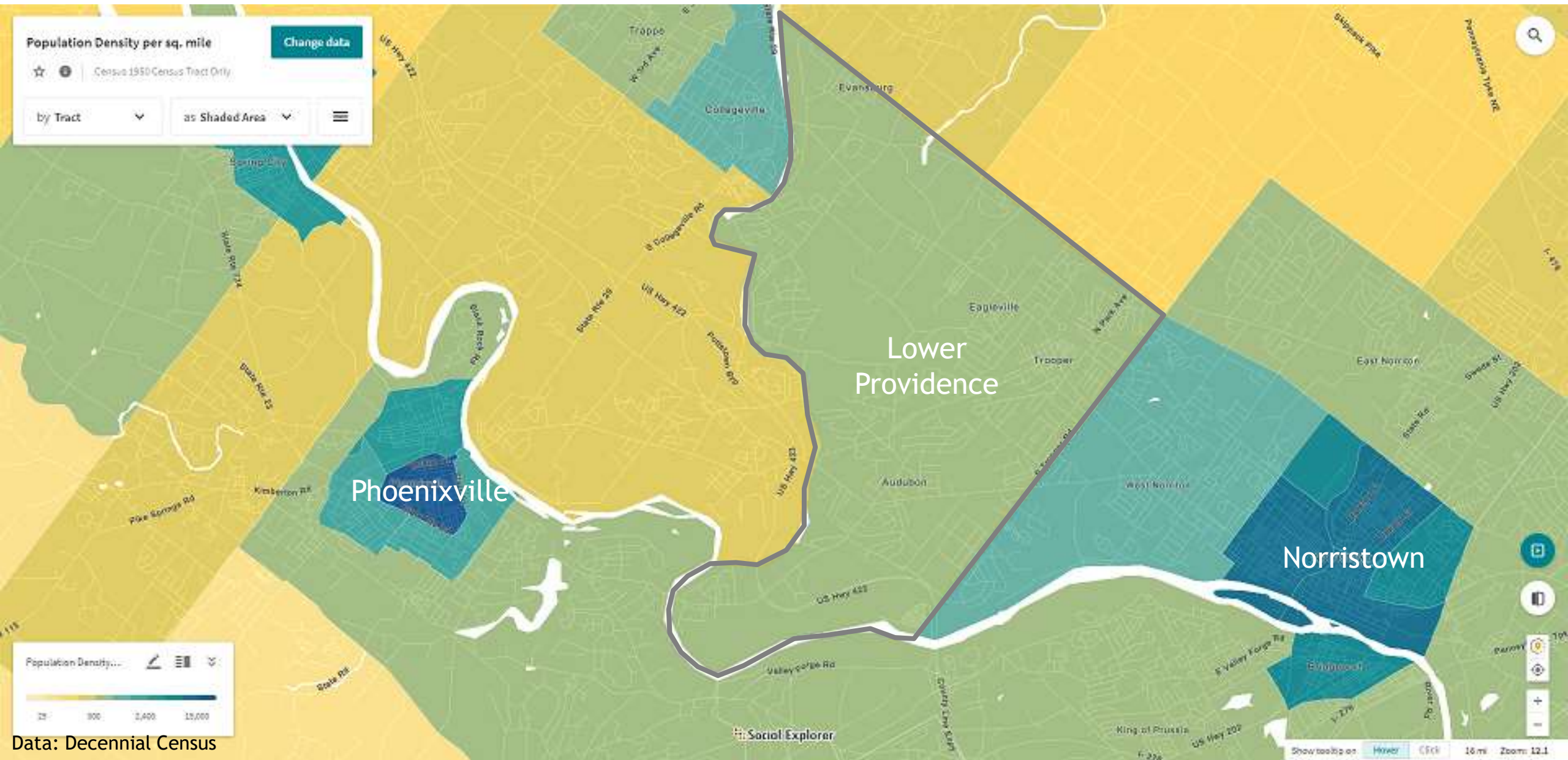
Trooper Road

Perkiomen
Creek

Schuylkill River

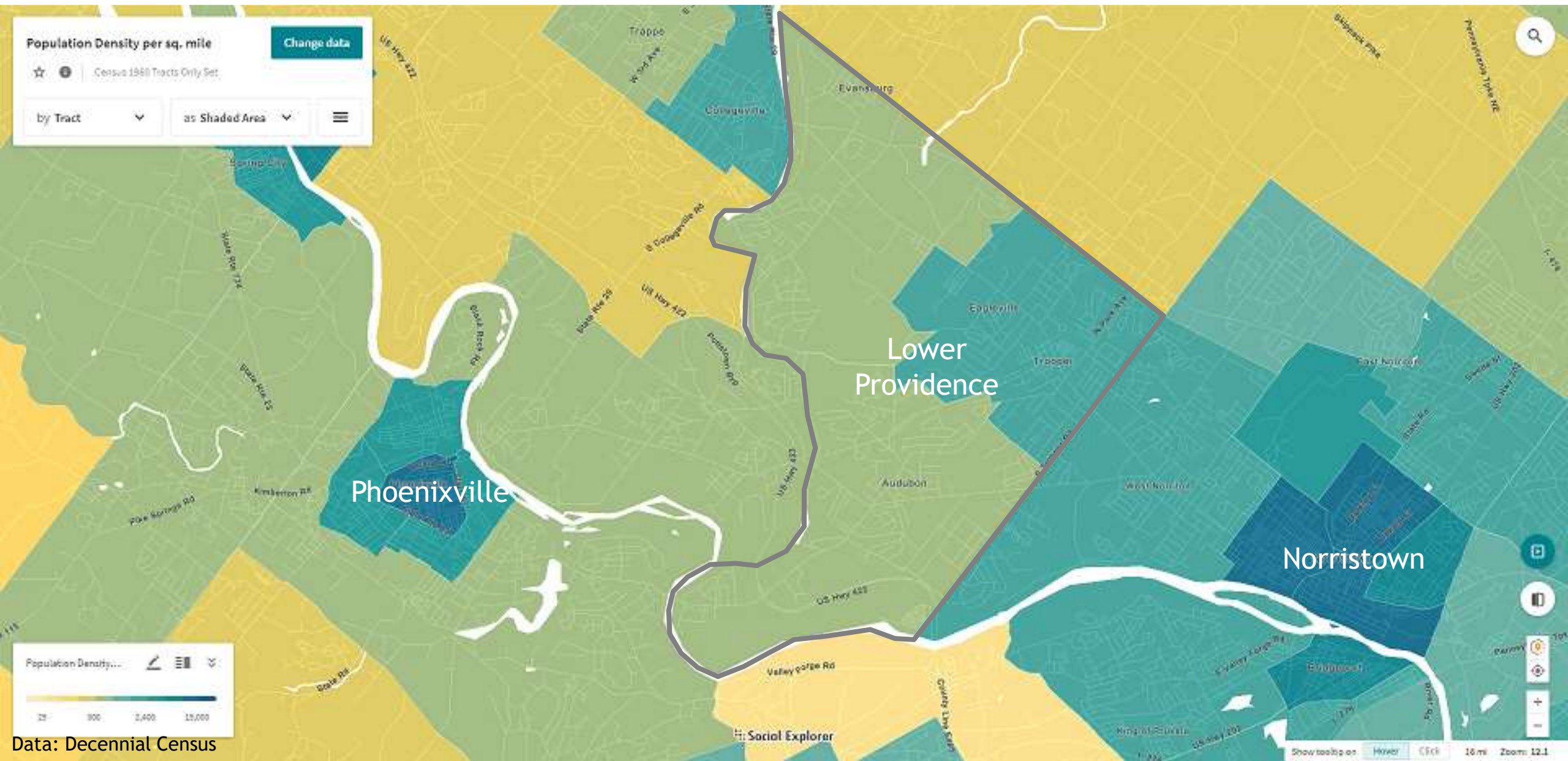


1950 - 5,887 people



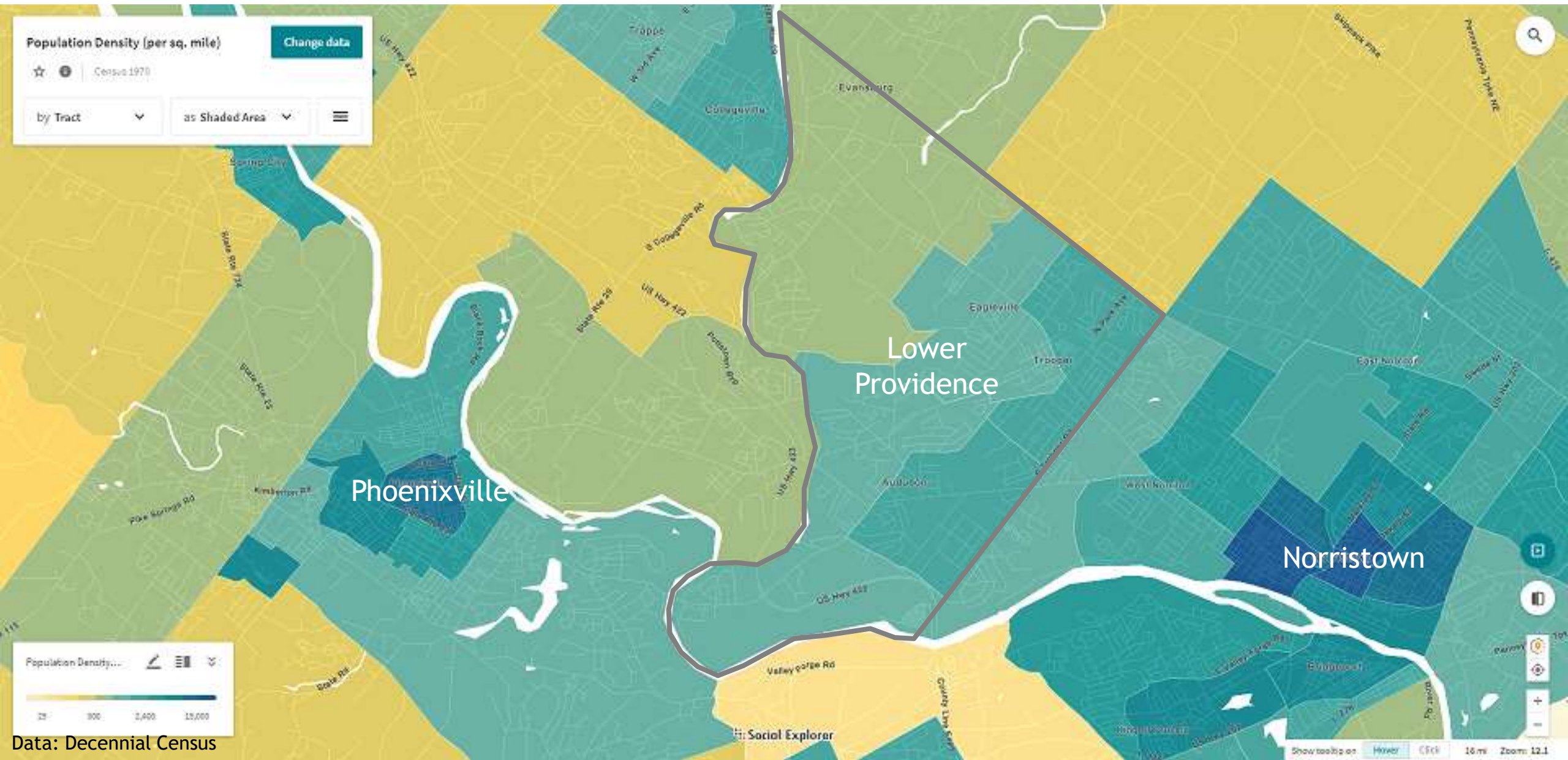
Data: Decennial Census

1960 - 9,955 people

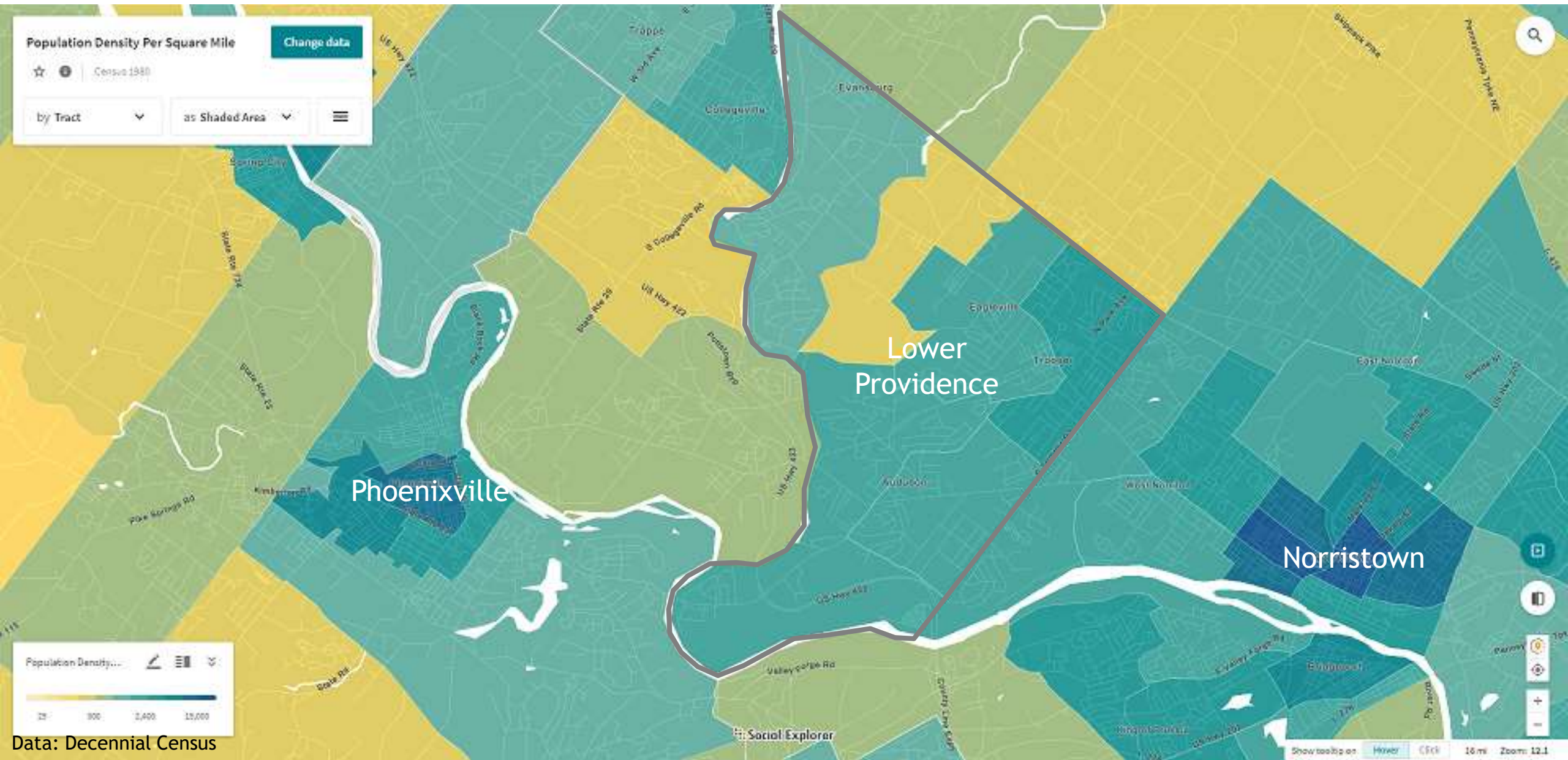


Data: Decennial Census

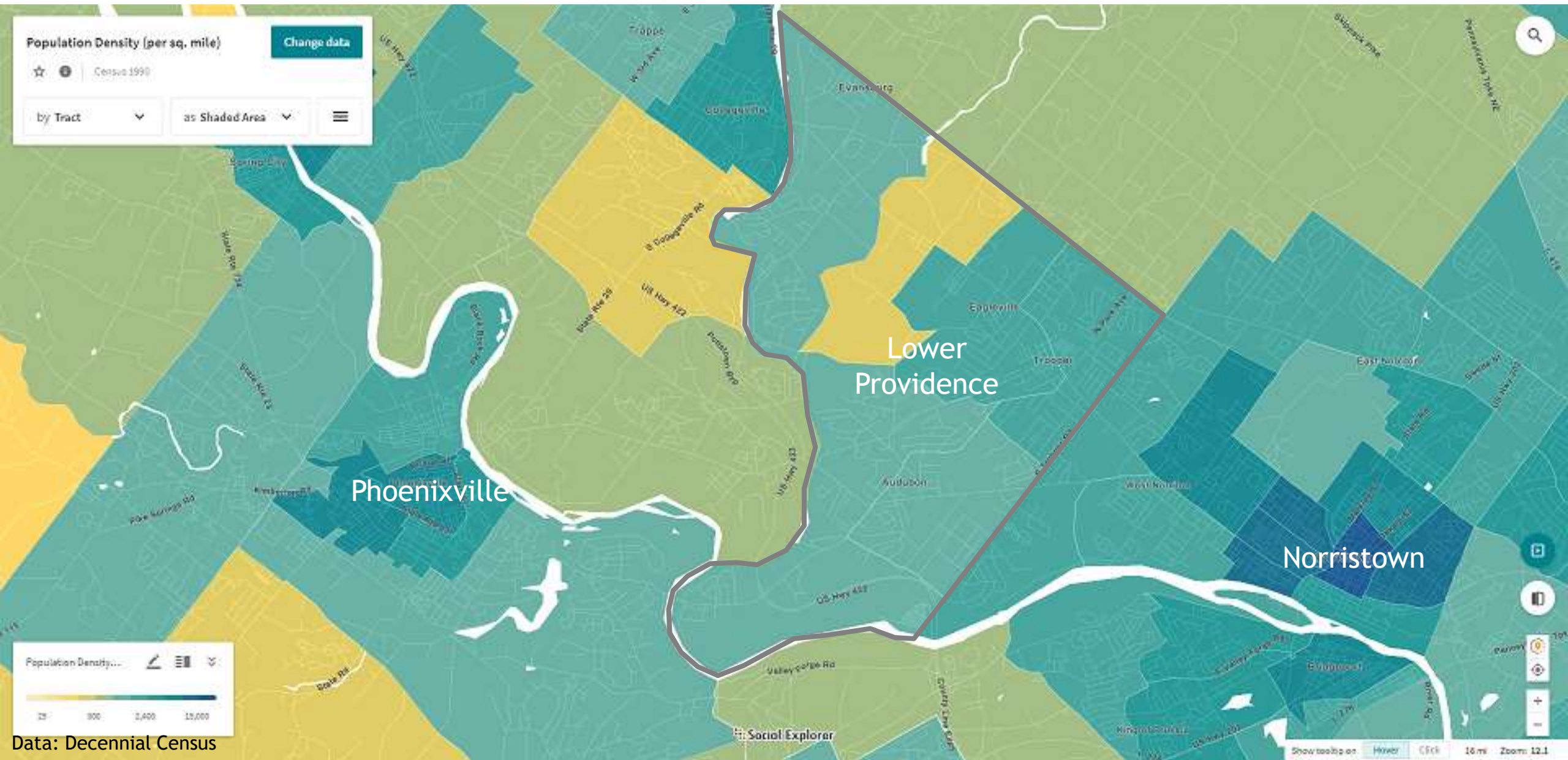
1970 - 15,169 people



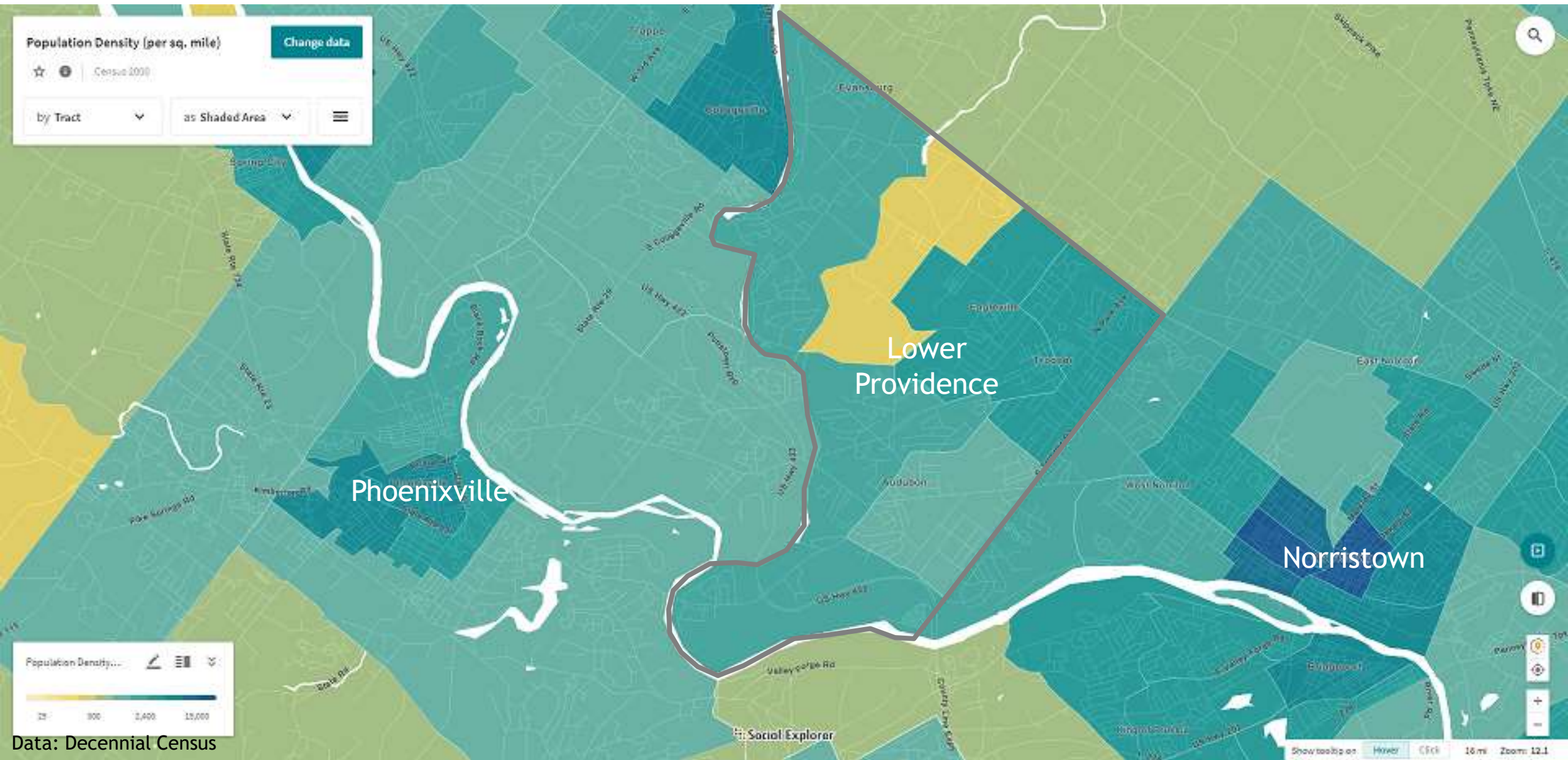
1980 - 18,945 people



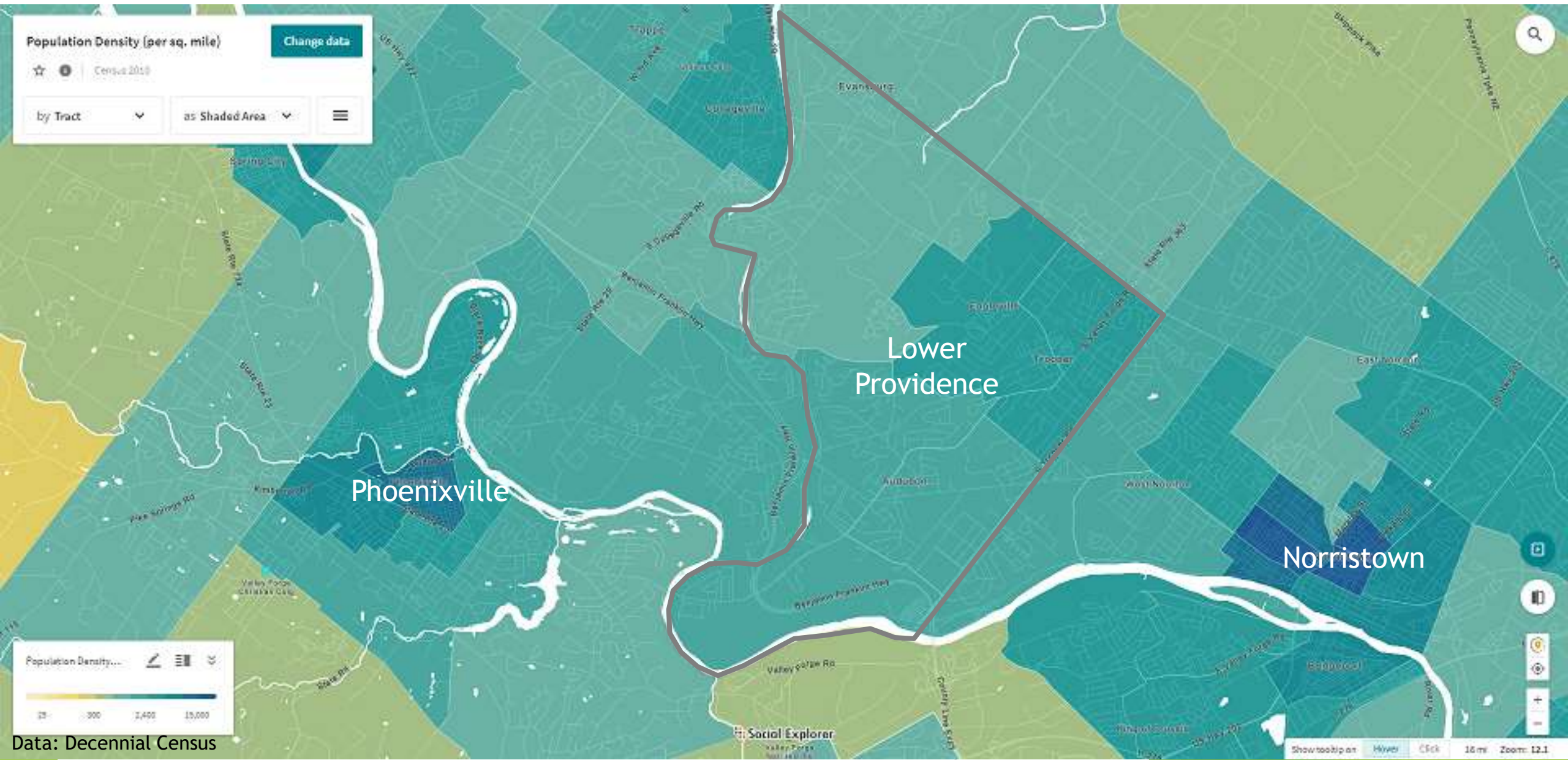
1990 - 19,351 people



2000 - 22,893 people

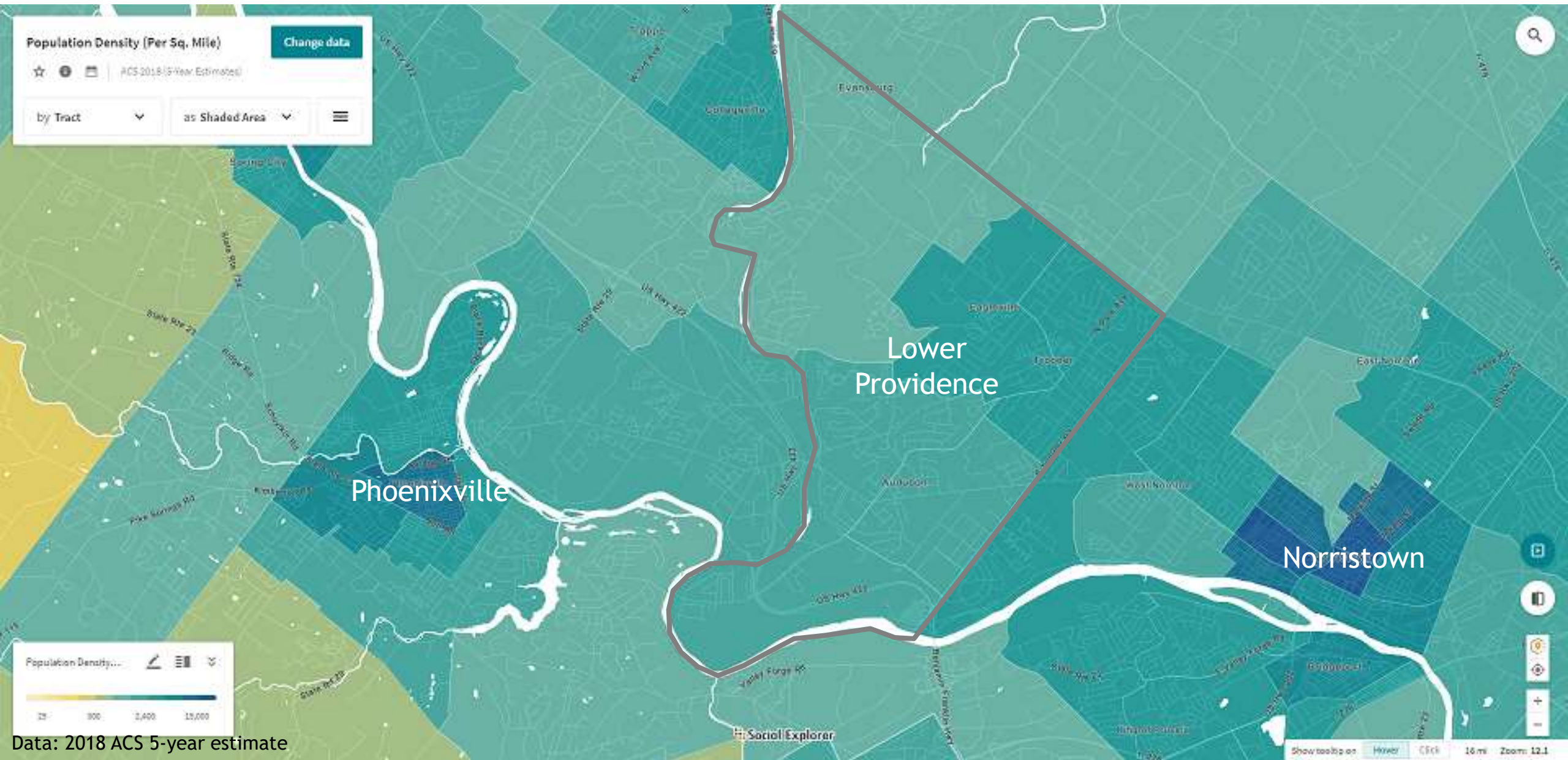


2010 - 25,436 people



Data: Decennial Census

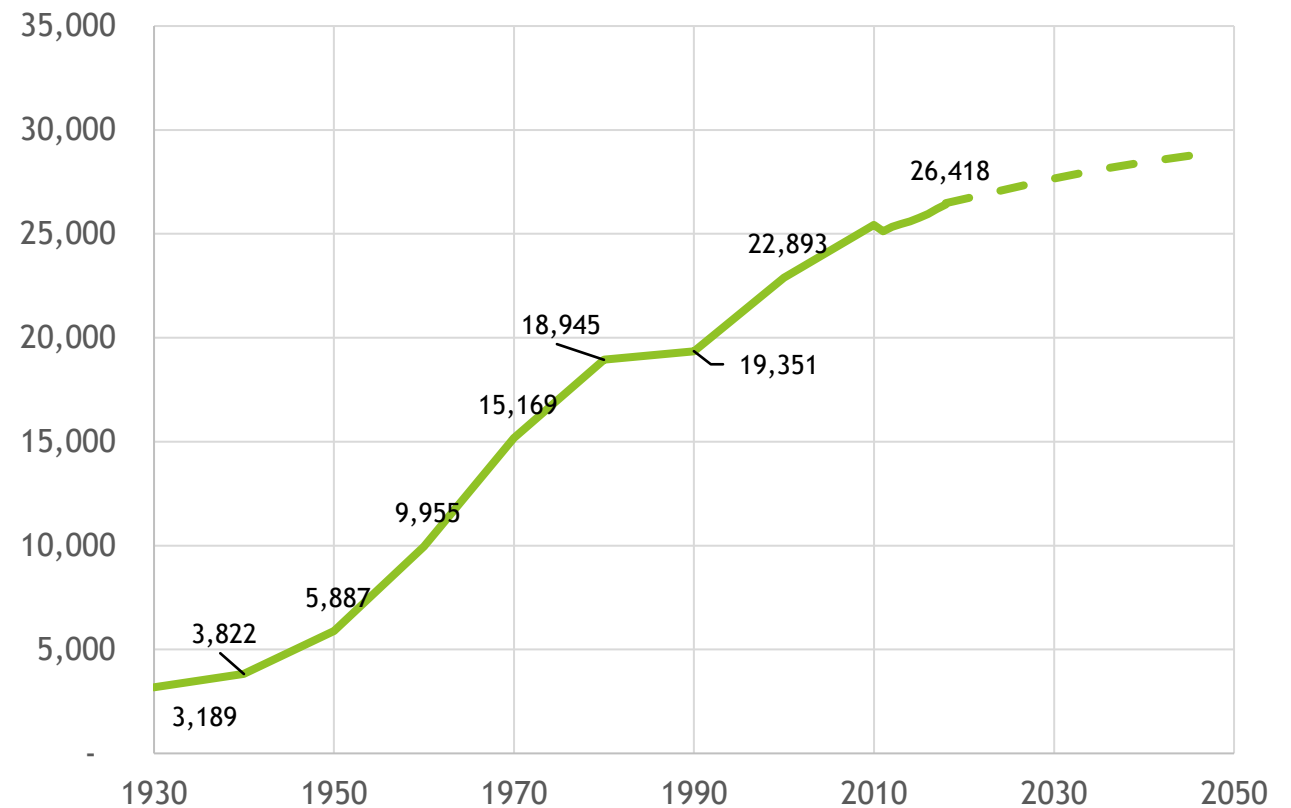
2018 - 26,418 people



Population - 26,418

Lower Providence experienced a period of rapid growth beginning in the 1940s. Population growth continues to the present day, though growth has slowed in recent years.

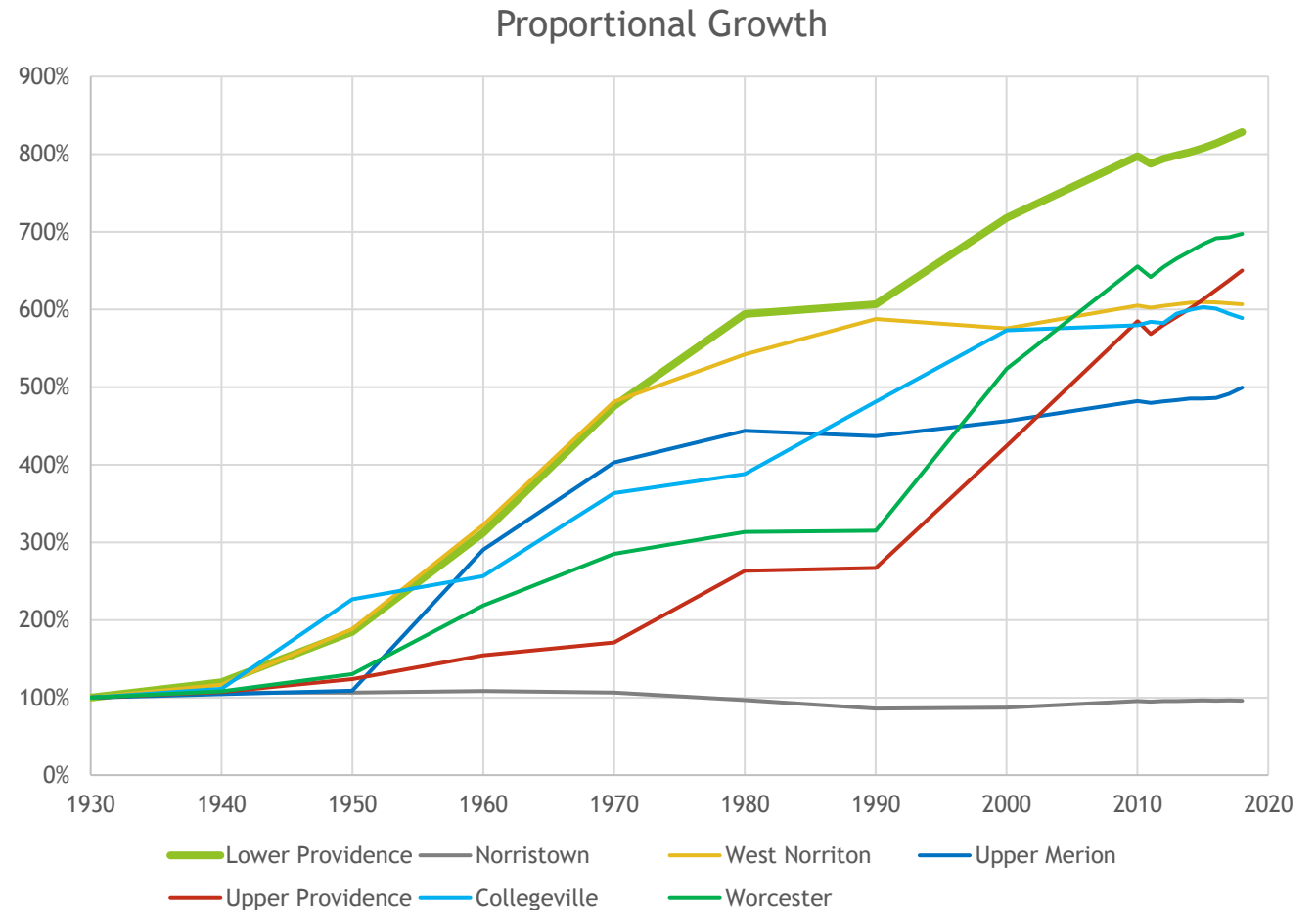
Lower Providence Population



Population

The region's population growth slowed during the 1970s and 80s- visible as a “hiccup” or pause in Lower Providence and several nearby townships.

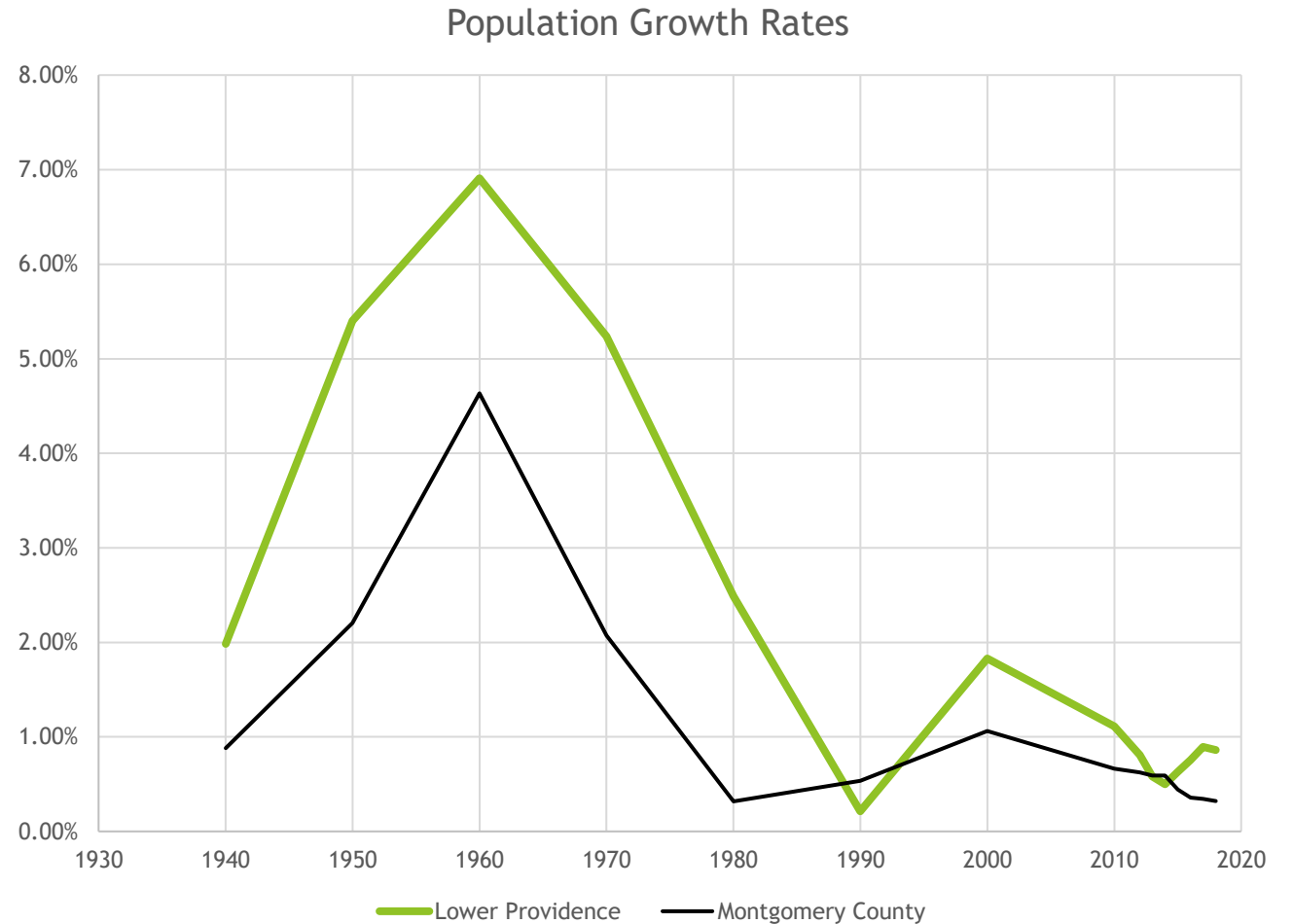
Lower Providence's growth during the past century stands out, even among other large townships.



Population

Population growth in Lower Providence has outpaced the county overall for most of the past century.

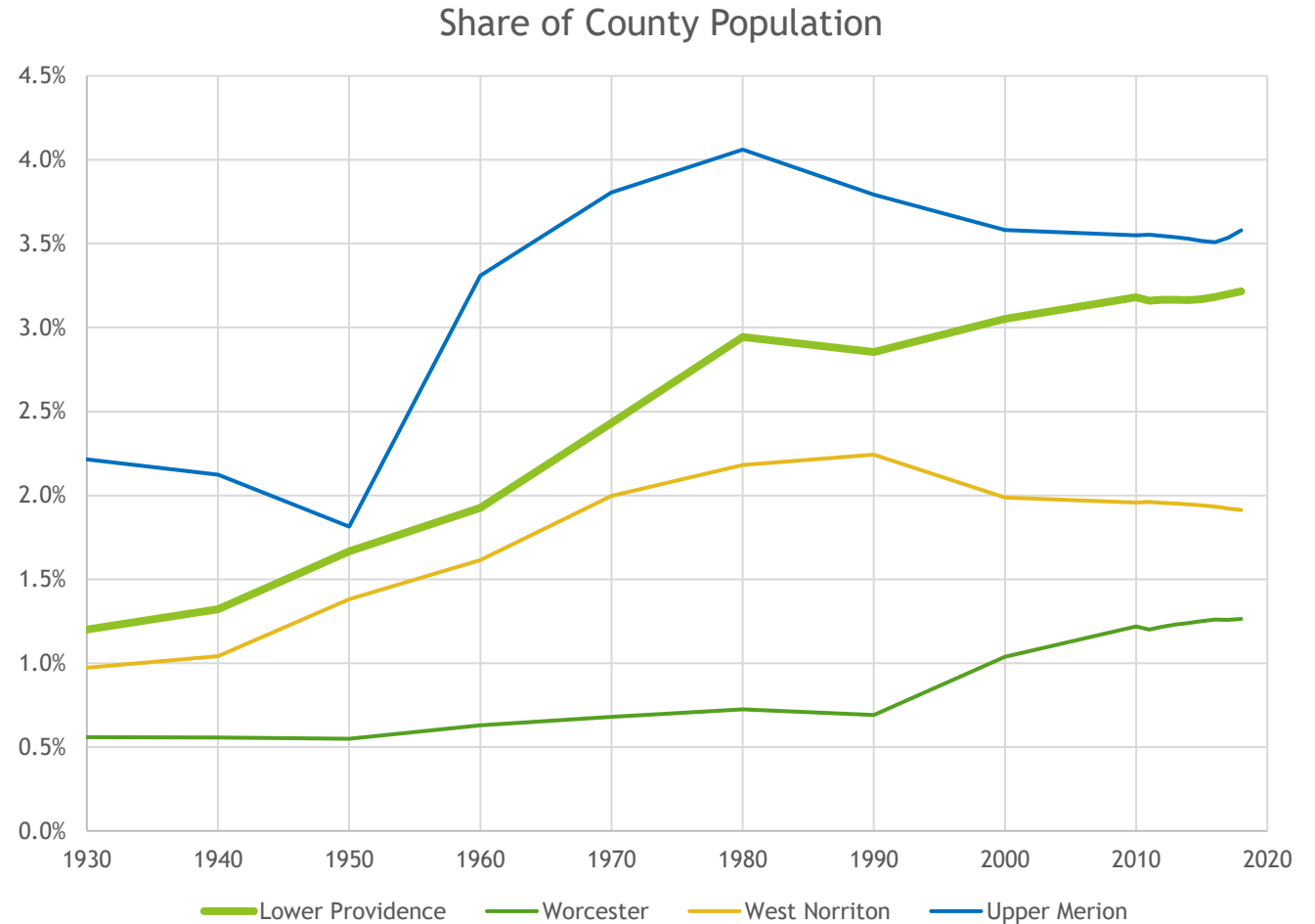
Lower Providence now accounts for a larger percentage of Montgomery County residents than at any point before.



Population

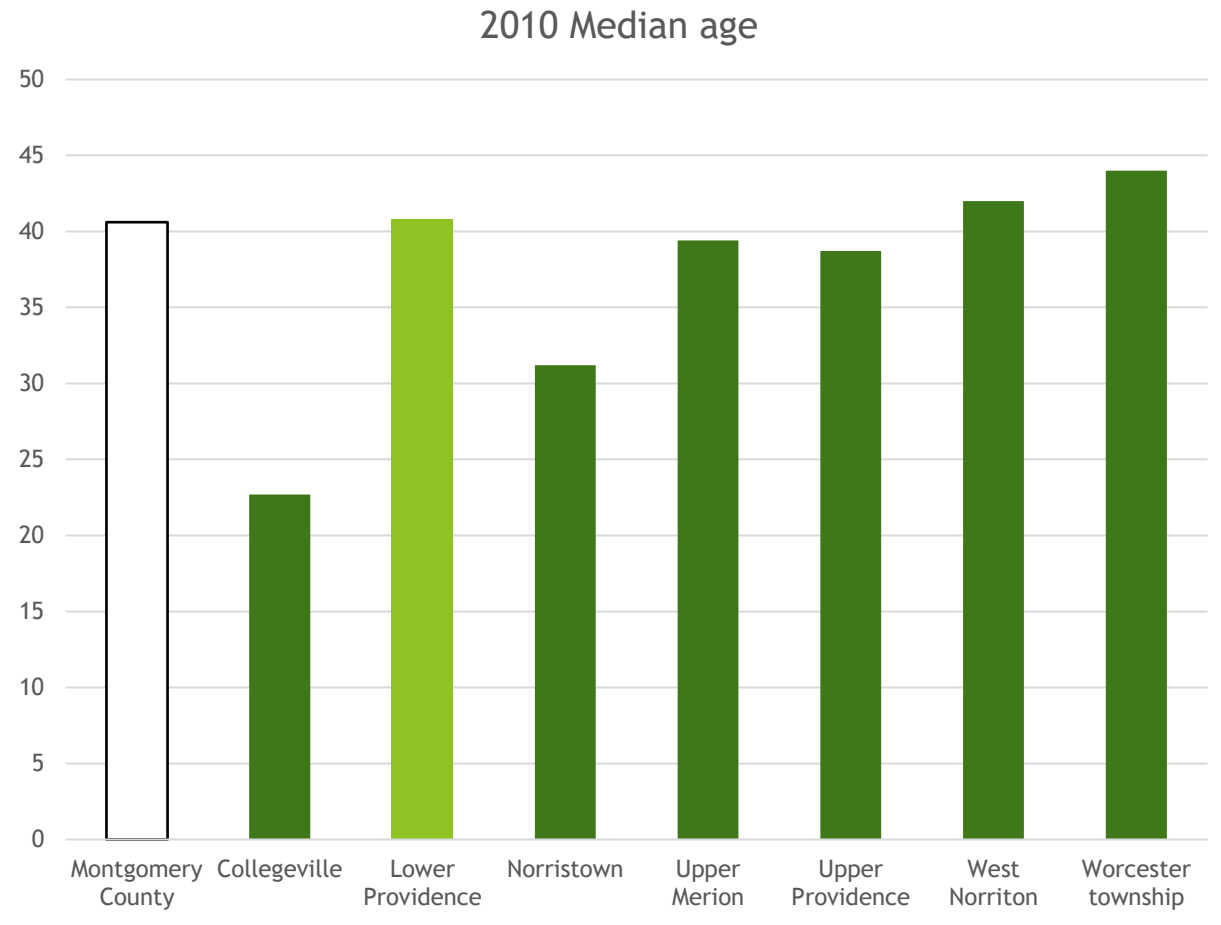
Population growth in Lower Providence has outpaced the county overall for most of the past century.

Lower Providence now accounts for a larger percentage of Montgomery County residents than at any point before.



Median Age - 40.8 years

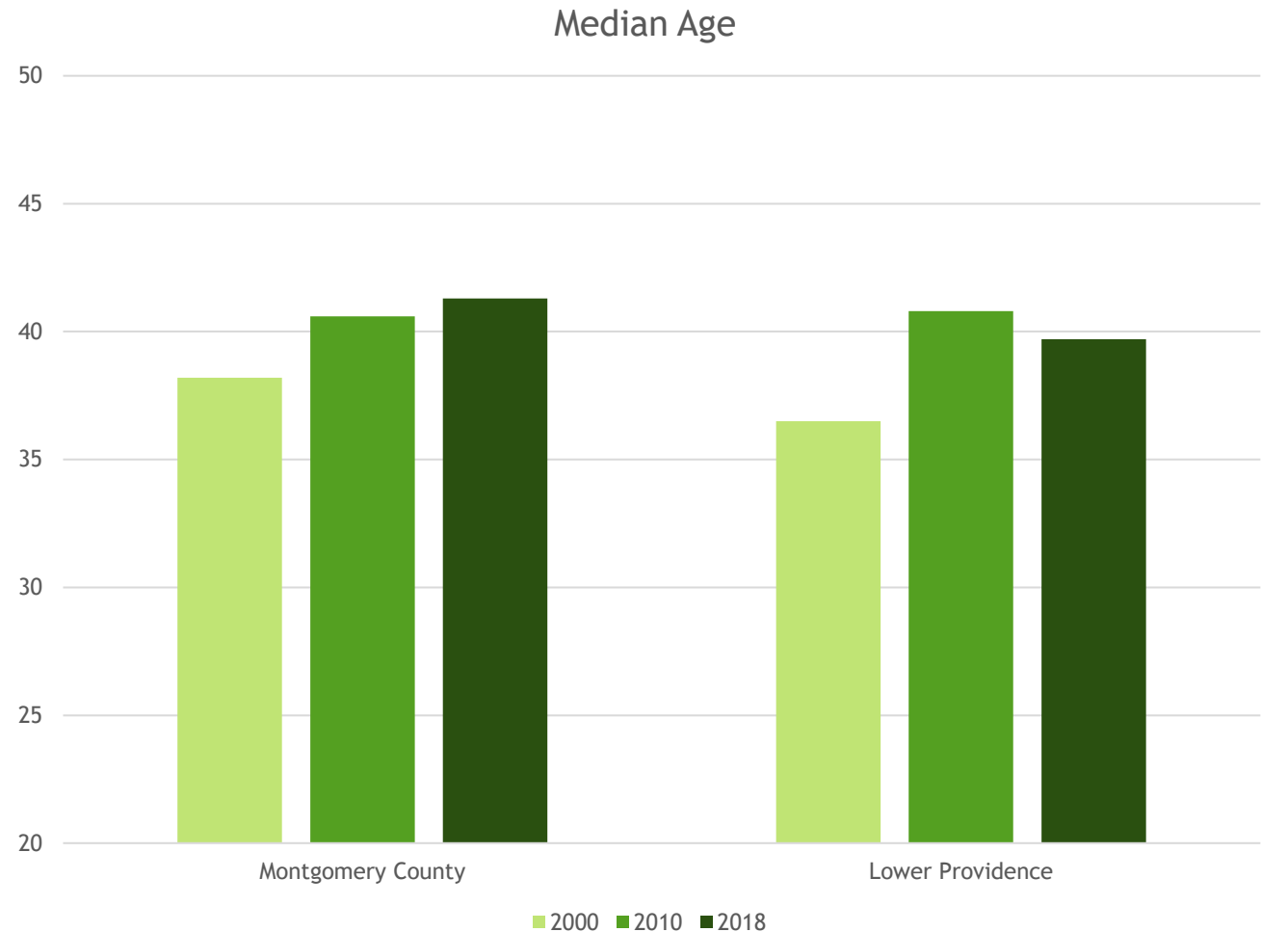
In the 2010 Census, the median age of Lower Providence was closer to that of Montgomery County (40.6) than any of the selected comparison communities.



Median Age

Lower Providence's median age increased more between 2000 and 2010 than in nearby townships.

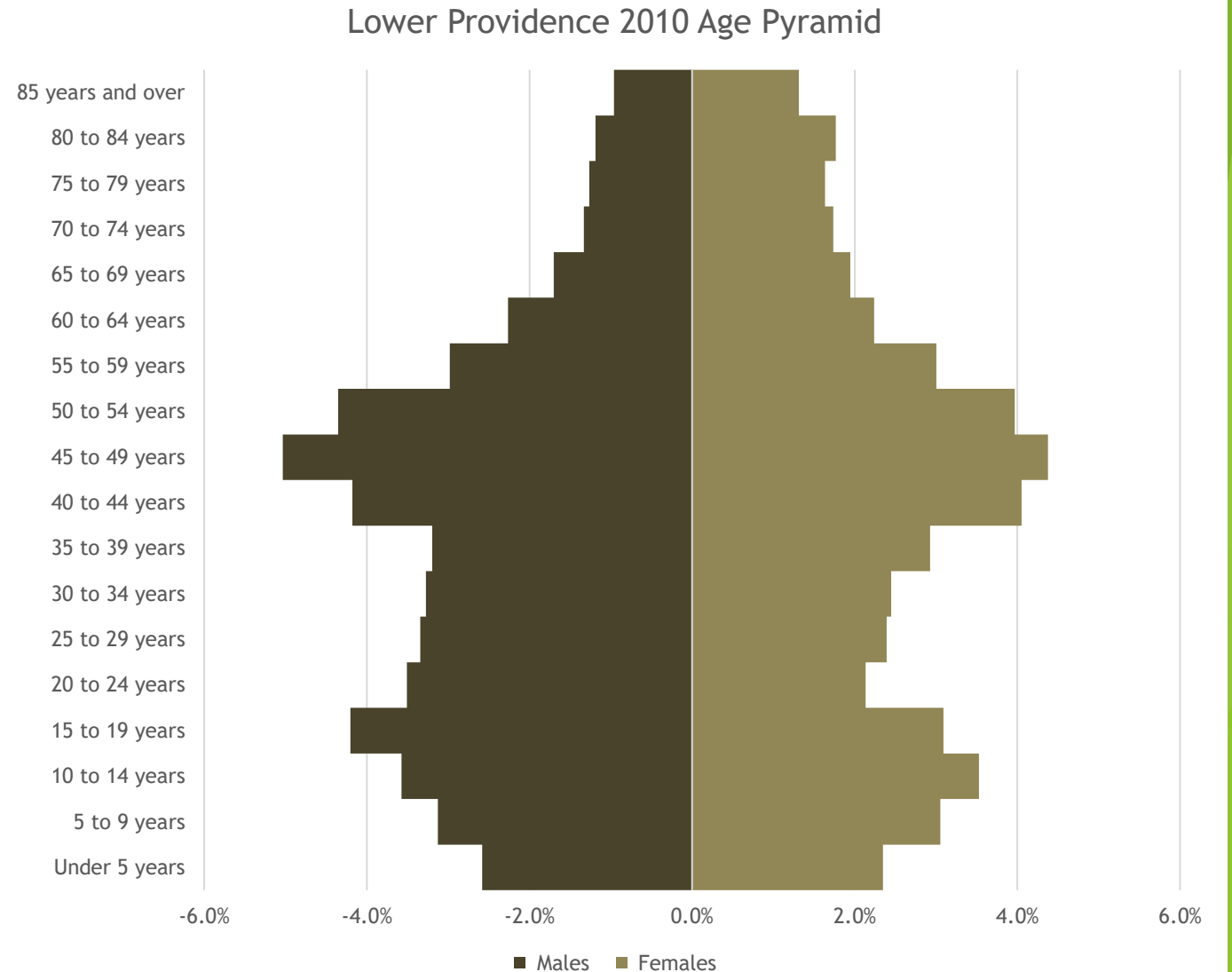
This change brought Lower Providence closer to the county's median age, while other townships moved away from the county's median age.



Age Pyramid

Lower Providence's Age Pyramid is fairly typical of a suburban community undergoing slow, steady growth

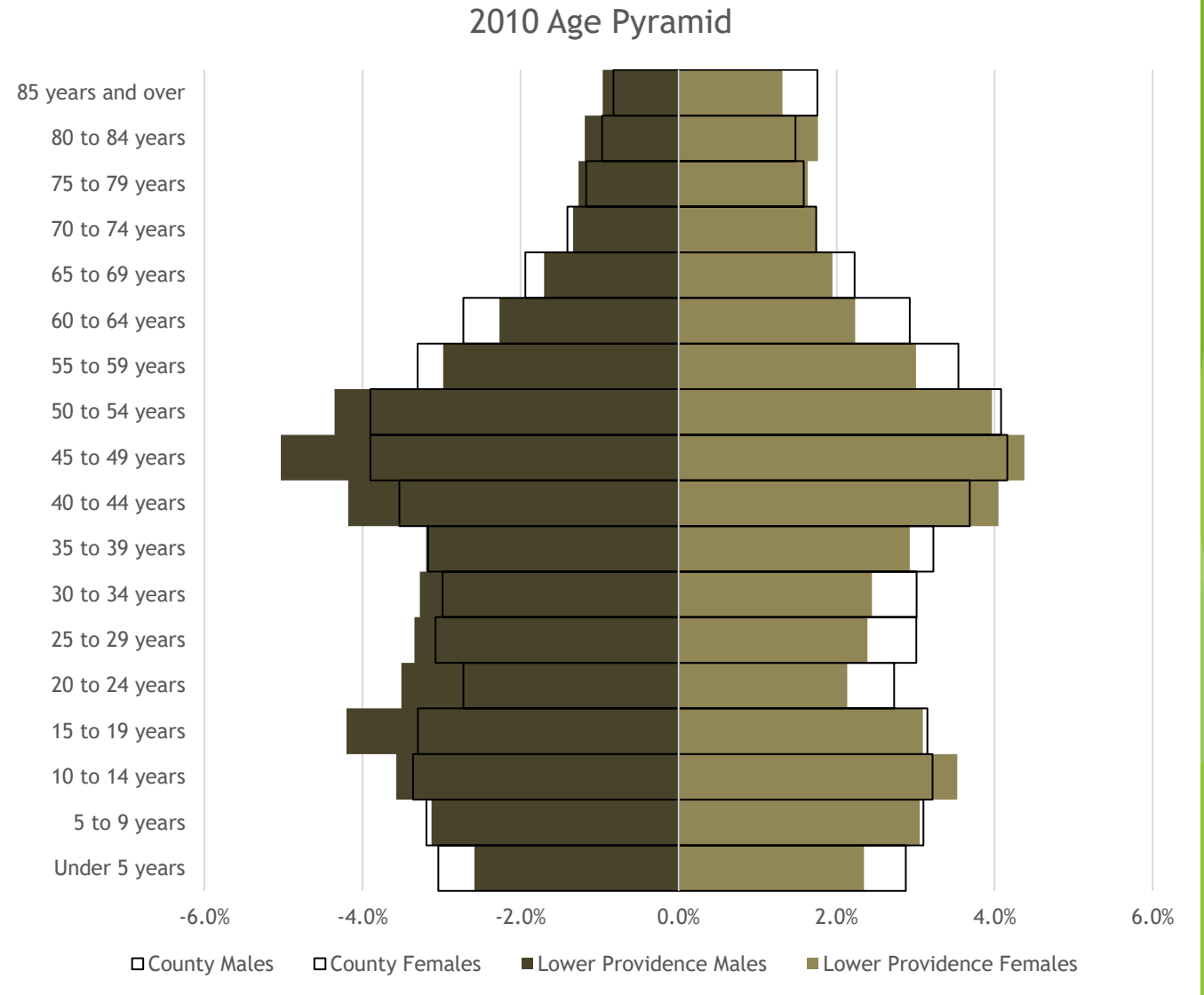
Gender disparities among younger adults are attributable to institutionalized populations living in group quarters.



Age Pyramid

When compared to the county's age pyramid, Lower Providence starts to stand out.

The township's population has a more defined generation gap and the jail's contribution is clearly seen among adult male cohorts.

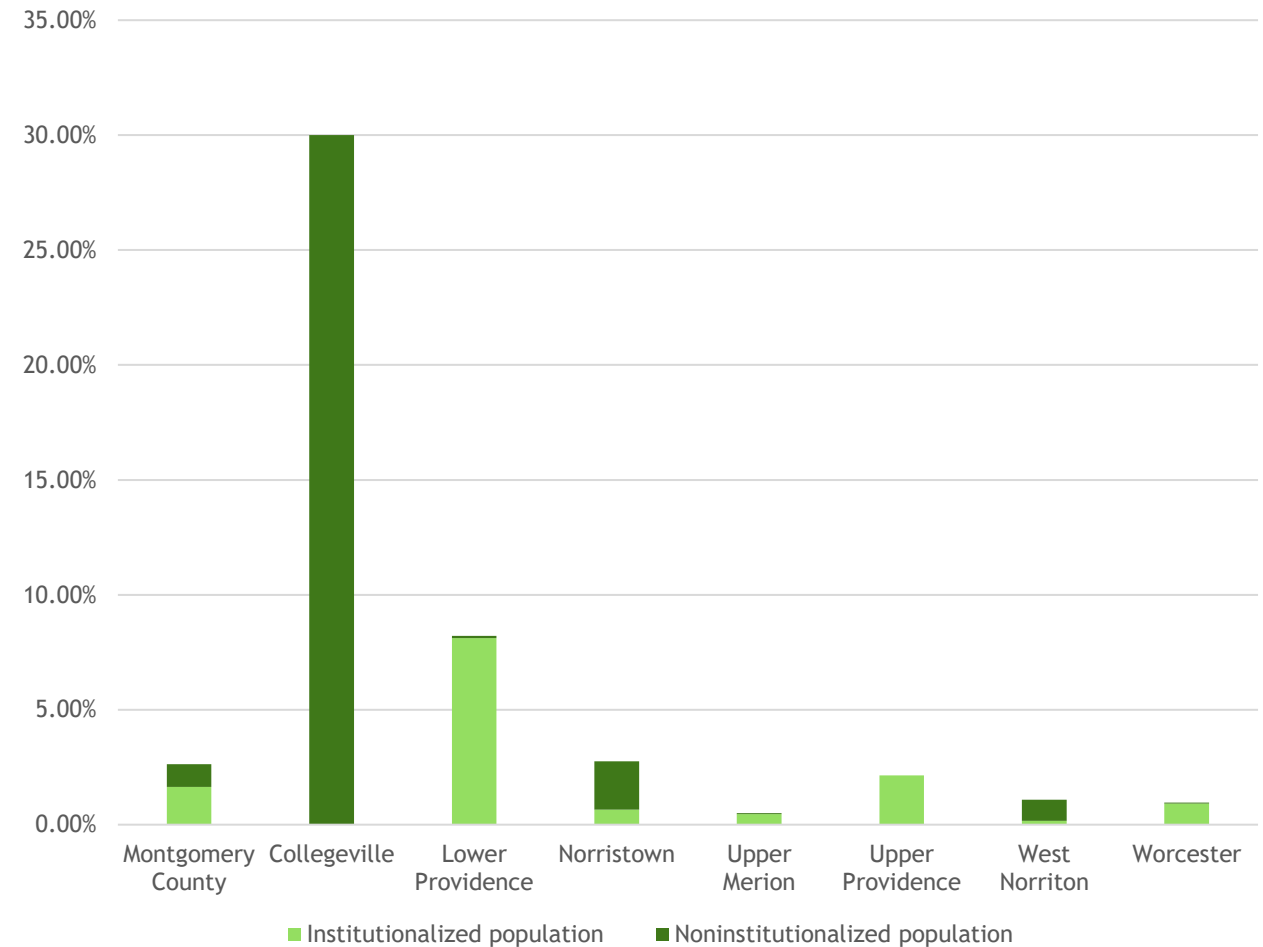


Group Quarters Population

Examples of Group Quarters:

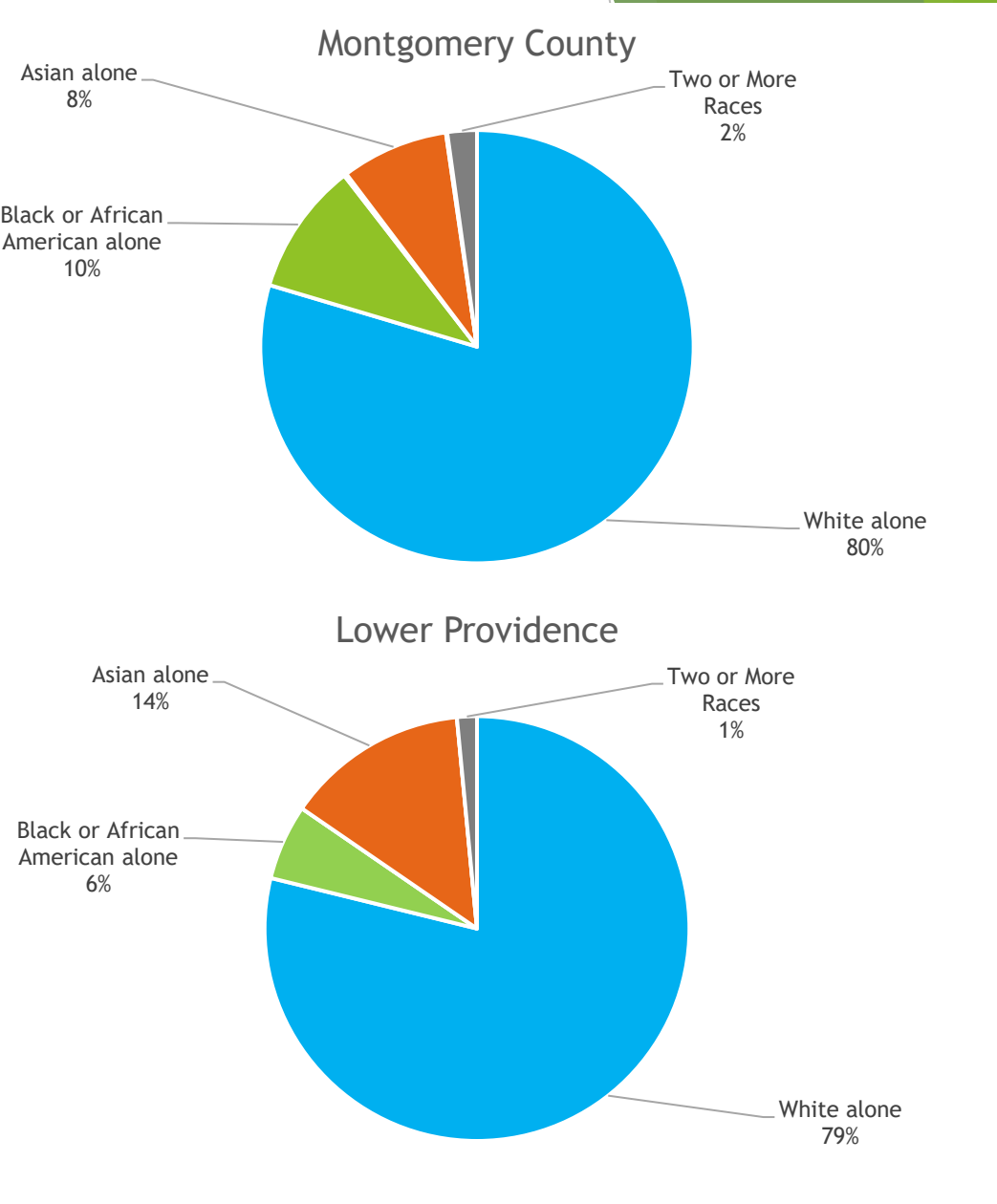
- ▶ Correctional facilities
- ▶ Nursing facilities/skilled-nursing facilities (nursing homes)
- ▶ Residential treatment centers
- ▶ Religious group living quarters (e.g., convents, monasteries, and abbeys)
- ▶ In-patient hospice facilities
- ▶ Group homes
- ▶ College/university or seminary student housing
- ▶ Hospitals
- ▶ Workers' group living quarters
- ▶ Job Corps centers or vocational training facilities

2010 Group Quarters Population Percentage



Race

The racial makeup of Lower Providence differs from the county primarily in the representation of Black or African American and Asian groups.



Ethnicity

Hispanic or Latino population in Lower Providence is very similar to the county

Montgomery County

5.30%

Hispanic or Latino

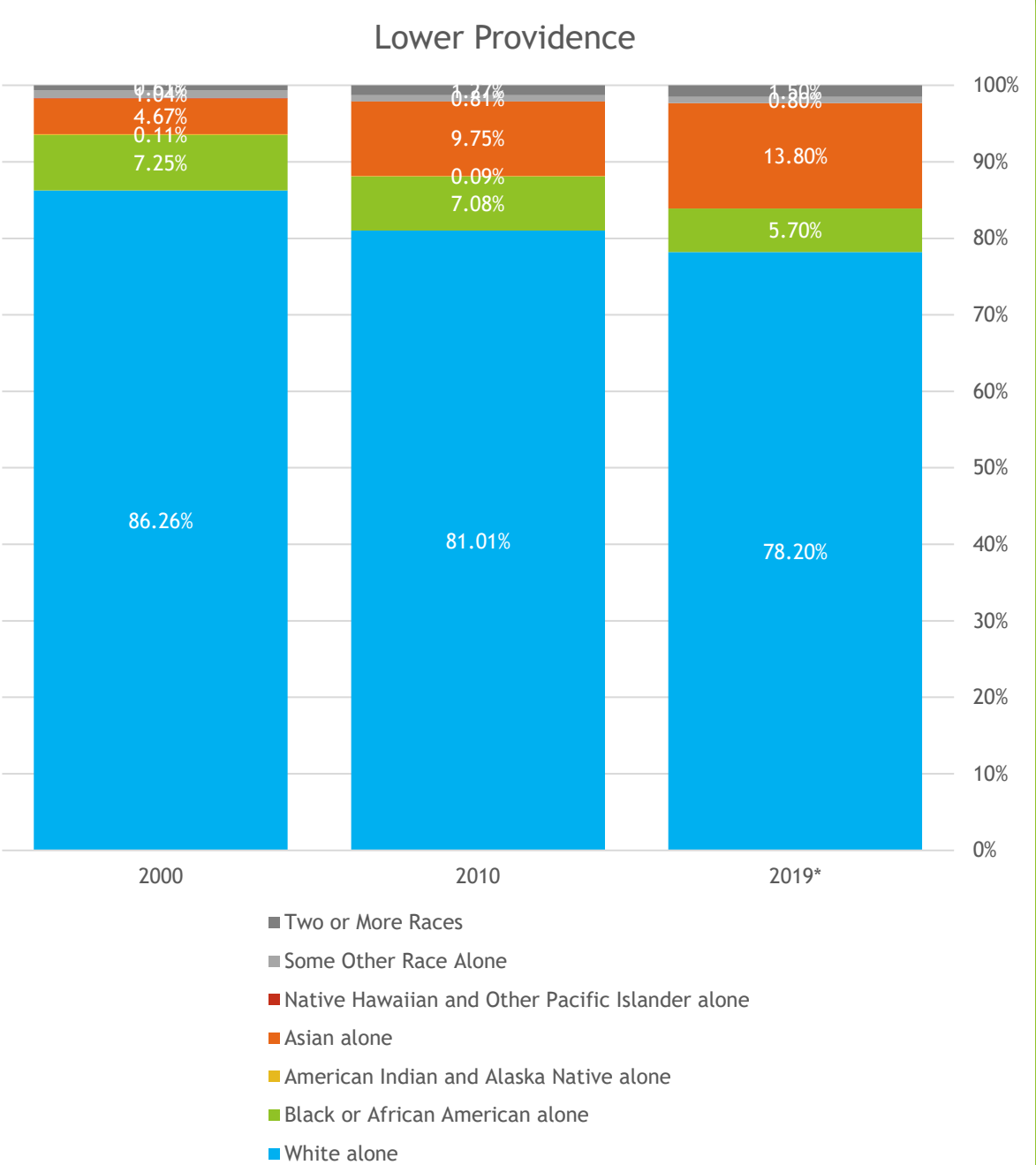
Lower Providence

5.10%

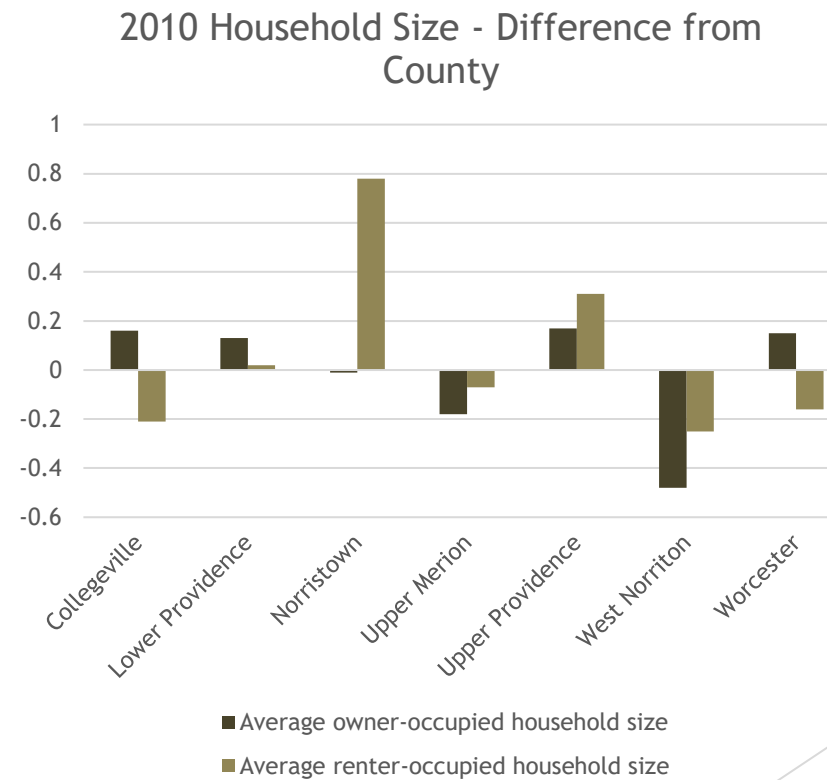
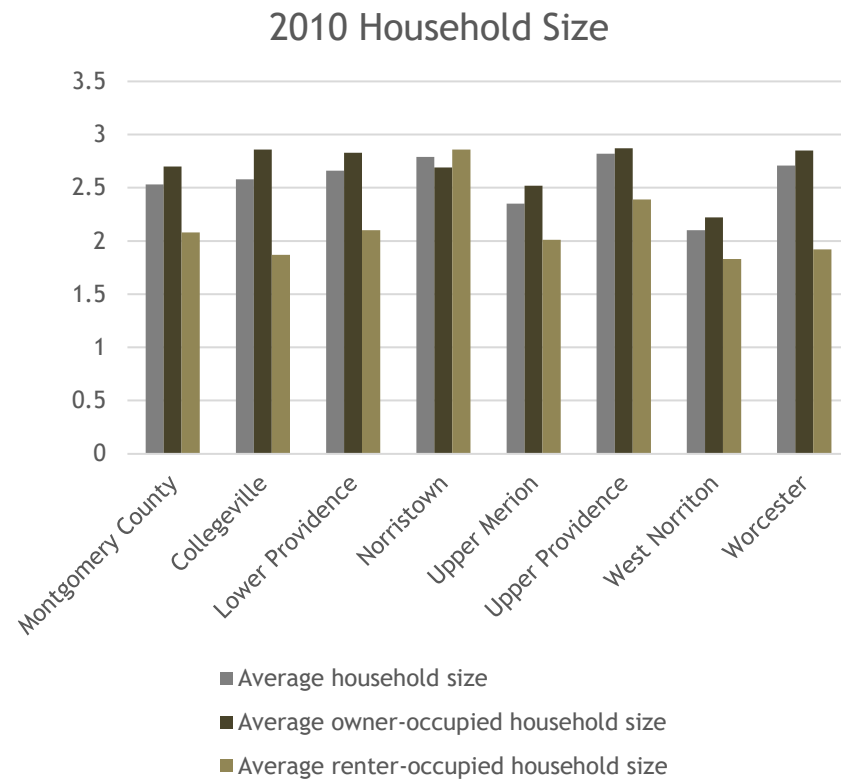
Hispanic or Latino

Race and Ethnicity

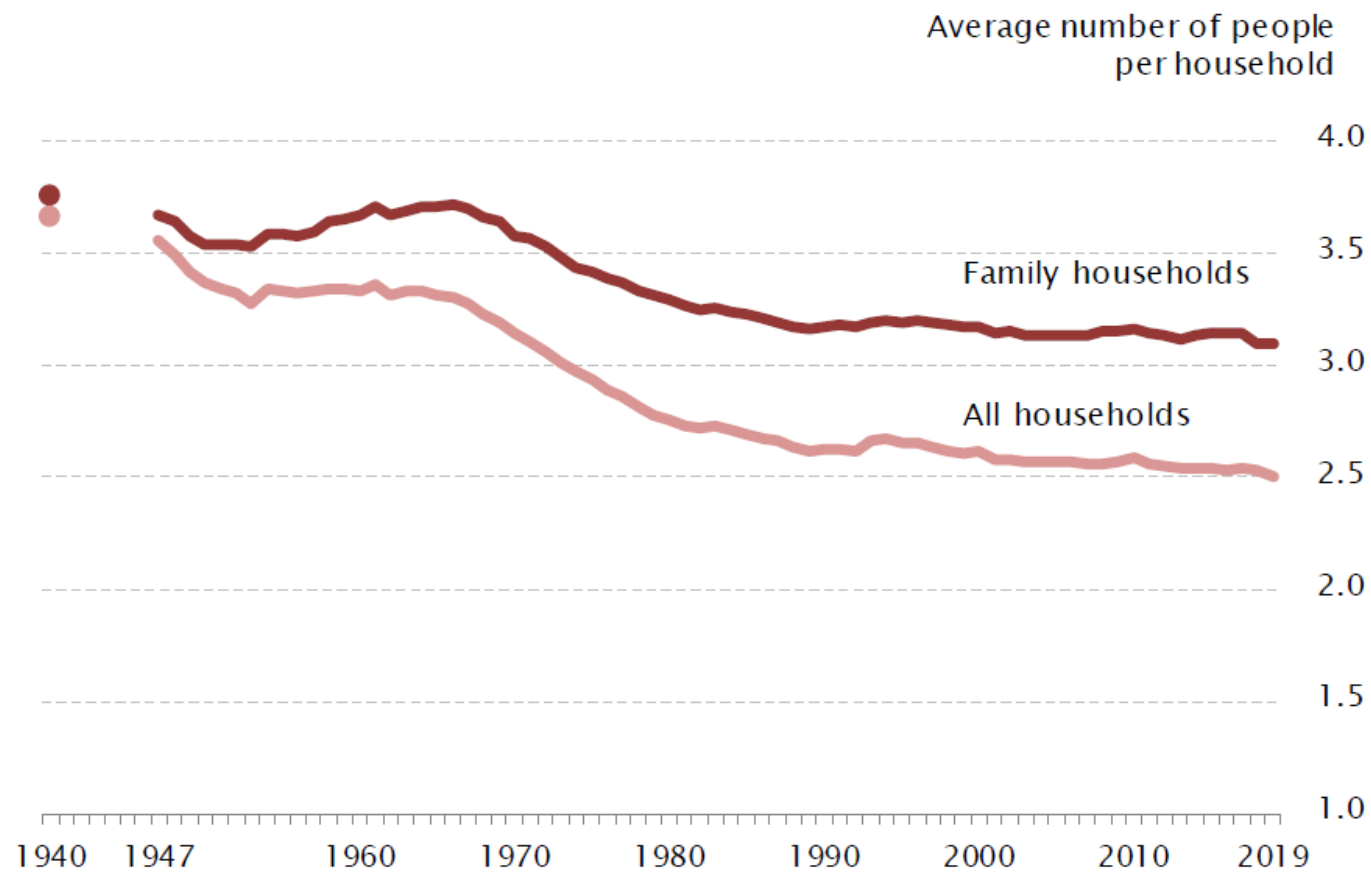
As the population of Lower Providence has grown in recent decades, it has also grown more diverse.



Average Household Size - 2.66



Household Size Over Time



Source: U.S. Census Bureau, Current Population Survey, Annual Social and Economic Supplements, 1940 and 1947 to 2019.

Next steps

- ▶ Continuing Business:
 - ▶ Send in comments or questions
 - ▶ Public Engagement strategies
- ▶ Upcoming Topics:
 - ▶ Existing Land Use
 - ▶ Housing
 - ▶ Transportation
- ▶ Closing Question:
What are two things you want to see in Lower Providence in 2040/What's at the top of your "wish list" for the community?