



Sponsored by the Lower Providence
Comprehensive Plan Steering
Committee

Supervisor Liaisons:
Cara Coless & Peter MacFarland

Montgomery County Planning Commission

REIMAGINE RIDGE PIKE

COMMUNITY VISIONING
DESIGN CHALLENGE

RESOURCE GUIDE

Contents

Pg. 3. Learn what area of Ridge Pike is in scope

Pg. 4. Zoning map and links to township documents

Pg. 5. Links to articles and sample design competitions for inspiration

Demographic information.

Pg. 7-9 Demographics within a 10 minute walk from the center point on Ridge Pike

Pg. 10 Demographics within a 10 minute drive from the center point on Ridge Pike

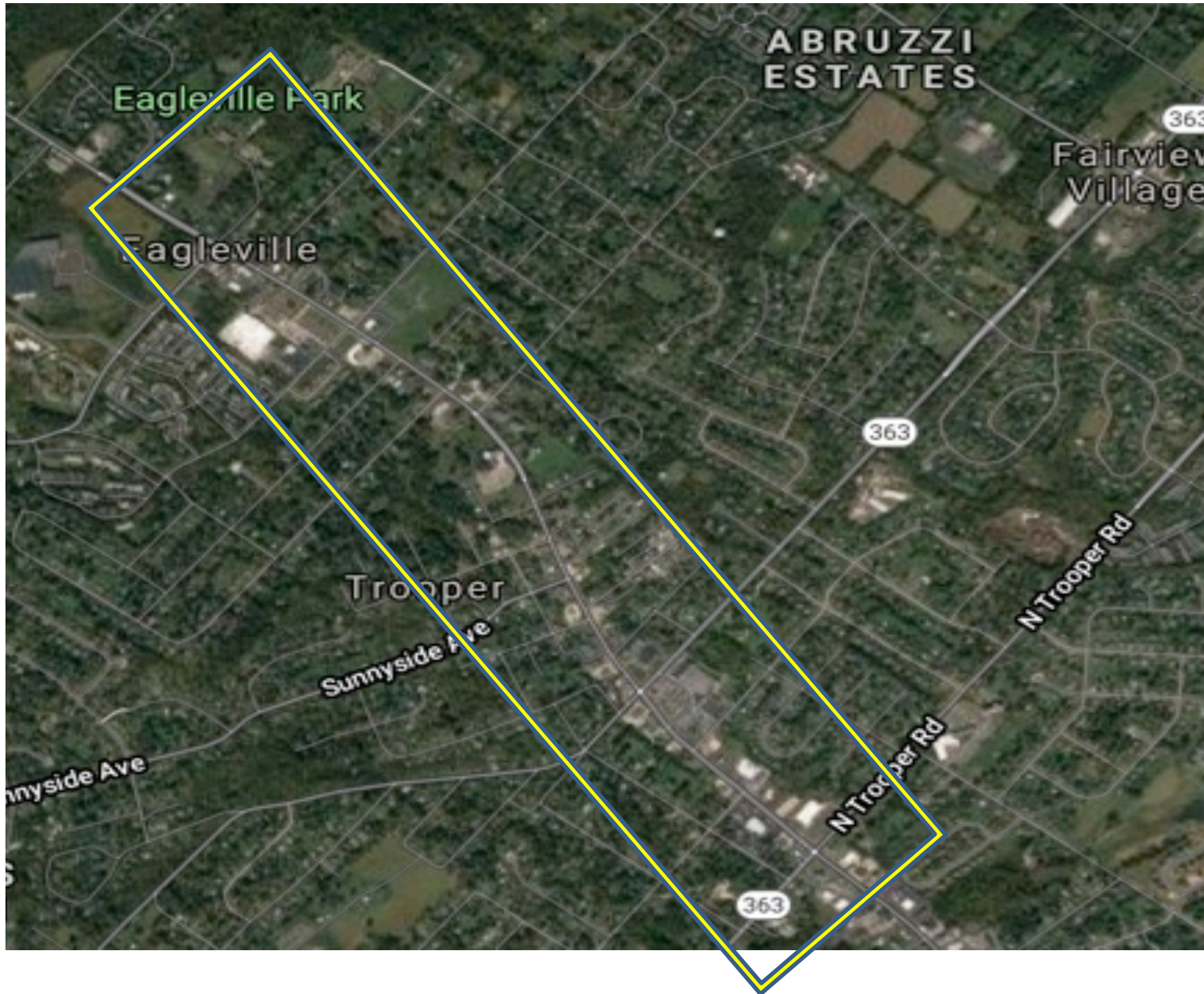
Pg. 11 Top employers in Lower Providence



What is in Scope

The Ridge Pike corridor from Trooper Road to Eagleville Road

- Reimagine a streetscape section or individual building/property.



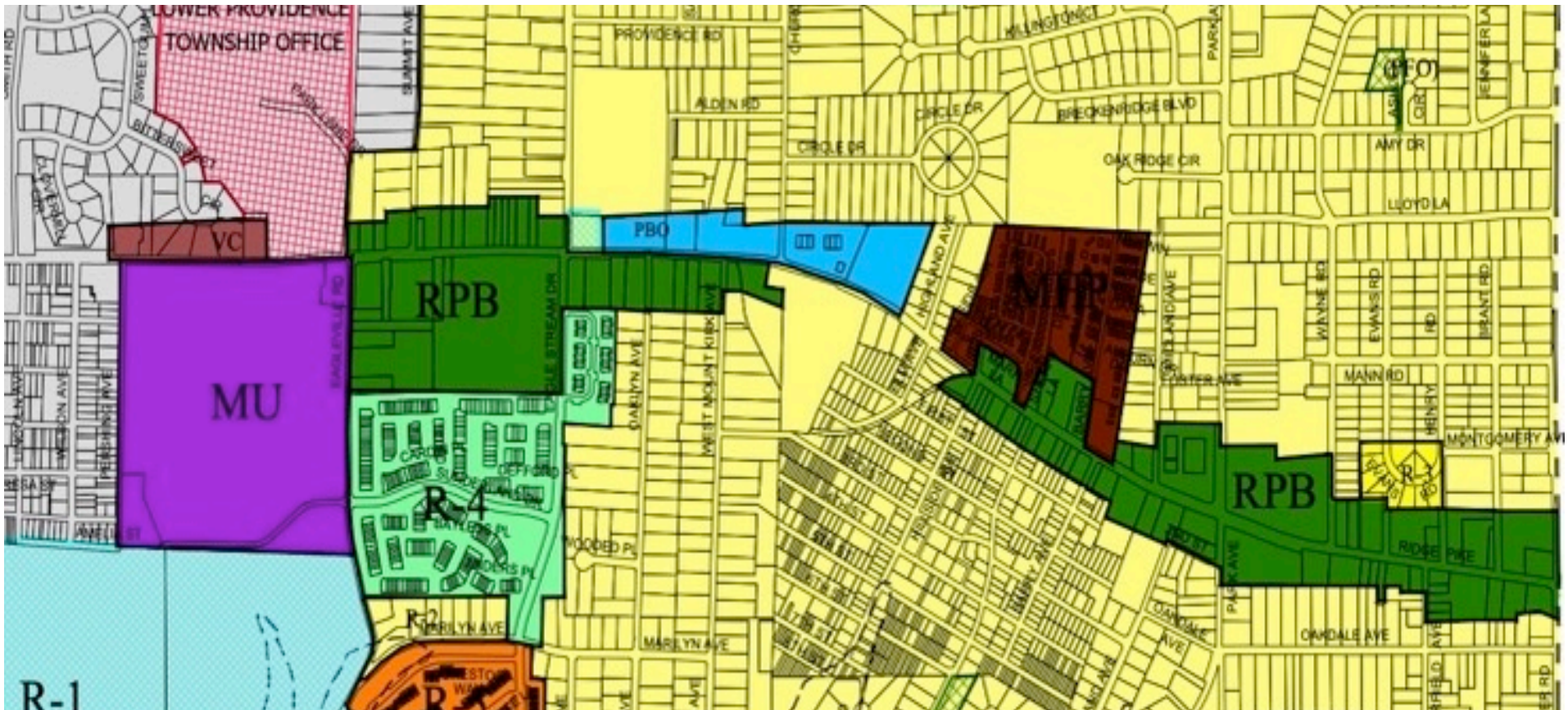
Zoning Map

Participants are not bound to Lower Providence zoning as this is a visioning exercise however for those interested links are below. We have also included examples of community design challenges.

Current Zoning Map [click here](#)

Ridge Pike Business District design guidelines <https://www.ecode360.com/6205242>

Ridge Pike Business District zoning <https://www.ecode360.com/6208484>



Links

Information that participants may find helpful

Example of a project sponsored by Northhampton, MA to involve the community in the redevelopment of a township lot. [Small Lots Big Ideas](#)

Pinterest search with sample visual designs [Click Here](#)

This is a link to a design firm that has samples of their projects [Click Here](#)

The Montco 2040 Plan outlines key themes and goals for the future, and provide realistic ways of accomplishing the vision. [Click Here](#)

[A Street You Go To, Not Just Through: Principles for Fostering Streets as Places](#)

This piece by Project for Public Spaces explores the appeal of walkable streets with examples from across the country and beyond.

[The Economic Benefits of Open Space, Recreation Facilities and Walkable Community Design](#)

From Active Living Research, this article lays out the value of compact neighborhood design and walking connections to parks and open space.

[Economic Value of Walkability](#)

In this paper from the Victoria Transport Policy Institute, we get a deeper dive into the costs and benefits of different transportation and land use patterns.



DEMOGRAPHIC INFORMATION



10 Minute Walk

Ridge Pike: between Trooper Rd. & Park Ave.

2/10/2021

Montgomery County

Demographic Profile

2639-2639 W Ridge Pike (10 minutes)

2639-2639 W Ridge Pike, Norristown, Pennsylvania, 19403

Walk time of 10 minutes

Prepared by Esri

Latitude: 40.14448

Longitude: -75.39265

DEMOGRAPHIC PROFILE

2639-2639 W Ridge Pike

Walk time of 10 minutes

EDUCATION

7%

No High School Diploma



27%

High School Graduate



23%

Some College



42%

Bachelor's/Grad /Prof Degree

EMPLOYMENT



74%
White Collar



13%
Blue Collar



12%
Services

18.9%
Unemployment Rate

KEY FACTS

769

Population

43.0

Median Age

284

Households

\$83,986

Median Disposable Income

INCOME



\$107,792

Median Household Income



\$47,965

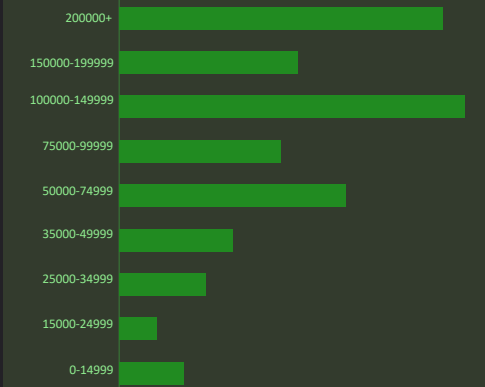
Per Capita Income



\$457,283

Median Net Worth

HOUSEHOLD INCOME (\$)



60
40
20
0



This infographic contains data provided by Esri. The vintage of the data is 2020, 2025.

© 2020 Esri

Source: This infographic contains data provided by Esri. The vintage of the data is 2020, 2025.

©2021 Esri

Page 1 of 1

February 10, 2021

Note: ESRI data may not calculate employment rates accurately at this scale.



10 Minute Walk

Ridge Pike: Between Park Ave. & Church Rd.

2/11/2021

Montgomery County

Demographic Profile

2920-2922 Ridge Pike (10 minutes)

2920-2922 Ridge Pike, Norristown, Pennsylvania, 19403

Walk time of 10 minutes

Prepared by Esri

Latitude: 40.15069

Longitude: -75.39777

DEMOGRAPHIC PROFILE

2920-2922 Ridge Pike

Walk time of 10 minutes

EDUCATION

5%

No High School Diploma



35%

High School Graduate



26%

Some College



34%

Bachelor's/Grad /Prof Degree

EMPLOYMENT



66%
White Collar



17%
Blue Collar



17%
Services

20.3%
Unemployment Rate

KEY FACTS

683

Population

44.9

Median Age

269

Households

\$75,000

Median Disposable Income

INCOME



\$95,001

Median Household Income



\$44,654

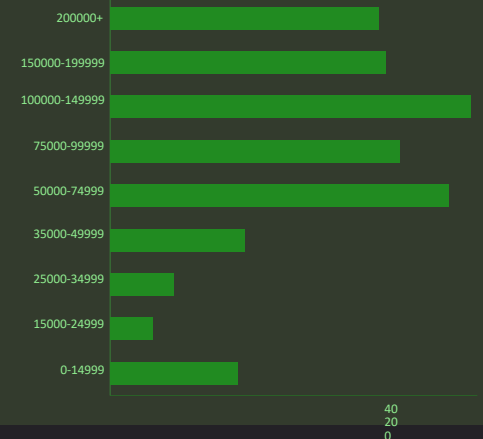
Per Capita Income



\$375,534

Median Net Worth

HOUSEHOLD INCOME (\$)



This infographic contains data provided by Esri. The vintage of the data is 2020, 2025.
© 2020 Esri

Source: This infographic contains data provided by Esri. The vintage of the data is 2020, 2025.

©2021 Esri

Page 1 of 1

February 11, 2021



10 Minute Walk

Ridge Pike: Between Church Rd. & Eagleville Rd.

2/11/2021

Montgomery County

Demographic Profile

Yangyang Body&Foot Massage (10 minutes)

Yangyang Body&Foot Massage

Walk time of 10 minutes

Prepared by Esri

Latitude: 40.15770

Longitude: -75.40450

DEMOGRAPHIC PROFILE

Yangyang Body&Foot Massage

Walk time of 10 minutes

EDUCATION



No High School Diploma



38%
High School Graduate



21%
Some College



33%
Bachelor's/Grad /Prof Degree

INCOME



\$69,876

Median Household Income



\$33,464

Per Capita Income



\$106,802

Median Net Worth

EMPLOYMENT



61%
White Collar



27%
Blue Collar



12%
Services

17.6%

Unemployment Rate

KEY FACTS

1,228

Population

38.2

Median Age

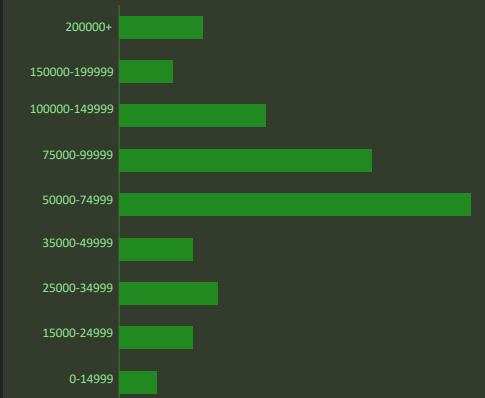
462

Households

\$55,585

Median Disposable Income

HOUSEHOLD INCOME (\$)



120
80
40
0



This infographic contains data provided by Esri. The vintage of the data is 2020, 2025.

© 2020 Esri

Source: This infographic contains data provided by Esri. The vintage of the data is 2020, 2025.

©2021 Esri

Page 1 of 1

February 11, 2021

Note: ESRI data may not calculate employment rates accurately at this scale.



10 Minute Drive

Ridge Pike: Between Trooper Rd. & Eagleville Rd.

2/11/2021

Montgomery County

Demographic Profile

2920-2922 Ridge Pike (10 minutes)

2920-2922 Ridge Pike, Norristown, Pennsylvania, 19403

Drive time of 10 minutes

Prepared by Esri

Latitude: 40.15069

Longitude: -75.39777

DEMOGRAPHIC PROFILE

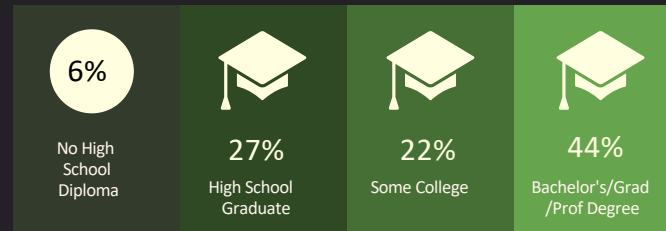
2920-2922 Ridge Pike

Drive time of 10 minutes

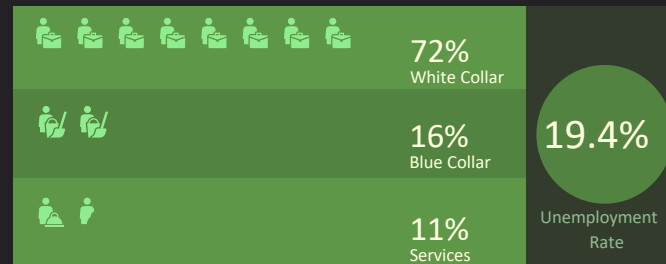


This infographic contains data provided by Esri. The vintage of the data is 2020, 2025.
© 2020 Esri

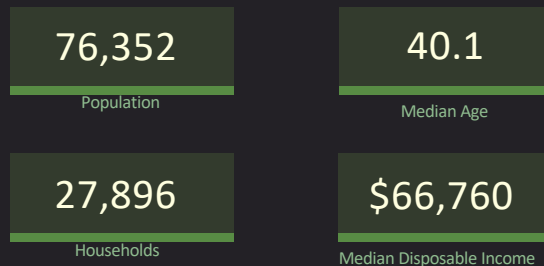
EDUCATION



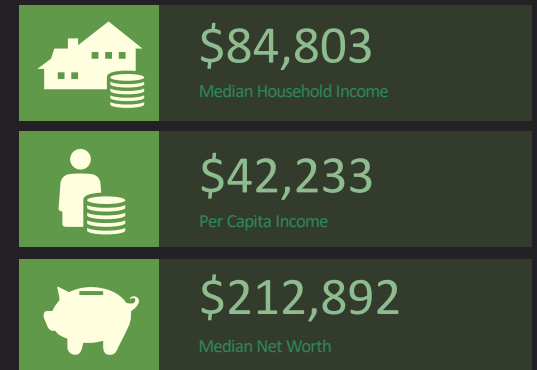
EMPLOYMENT



KEY FACTS



INCOME



HOUSEHOLD INCOME (\$)



Source: This infographic contains data provided by Esri. The vintage of the data is 2020, 2025.

©2021 Esri

Page 1 of 1

February 11, 2021

Top Employers In Lower Providence

In 2018, the US Census Bureau reported a total of 11,637 jobs in Lower Providence Township. Current records provided by Lower Providence township's tax collector identify the following as the largest employers in the township:

RANK	EMPLOYER	EMPLOYEES
1	PJM Interconnection LLC	702
2	Montgomery County (prison & Operations Center)	613
3	Optum 360 Services Inc.	562
4	Methacton School District	368
5	Eagleville Hospital	344
6	Meadows Management Inc. (Shannondell)	325
7	Streamlight Inc.	319
8 (tie)	Dell Retirement Services Inc. (Shannondell)	316
8 (tie)	MRO Corporation	316
10	Giant Food Stores LLC	263