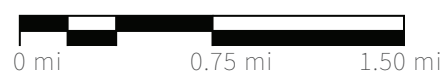


- Existing Conditions**
- Project Area
 - Municipal Boundaries
 - Parcels
 - Water Body
 - Local Road
 - State Road
 - Highway
 - Municipal Open Space
 - State Open Space
 - Federal Open Space
 - County Open Space

Cultural Inventory





Schools

There are five schools in Lower Providence Township that are part of the Methacton School District:

A. Arrowhead Elementary School

Recreation Facilities: 2 baseball fields, playground, 1 basket court

B. Skyview Upper Elementary School & Arcola Intermediate School

Shared Recreation Facilities: 6 multi-use fields, 2 baseball fields, 7 tennis courts

D. Eagleville Elementary School

Recreation Facilities: 1 multi-use field, 2 baseball fields, playground

E. Woodland Elementary School

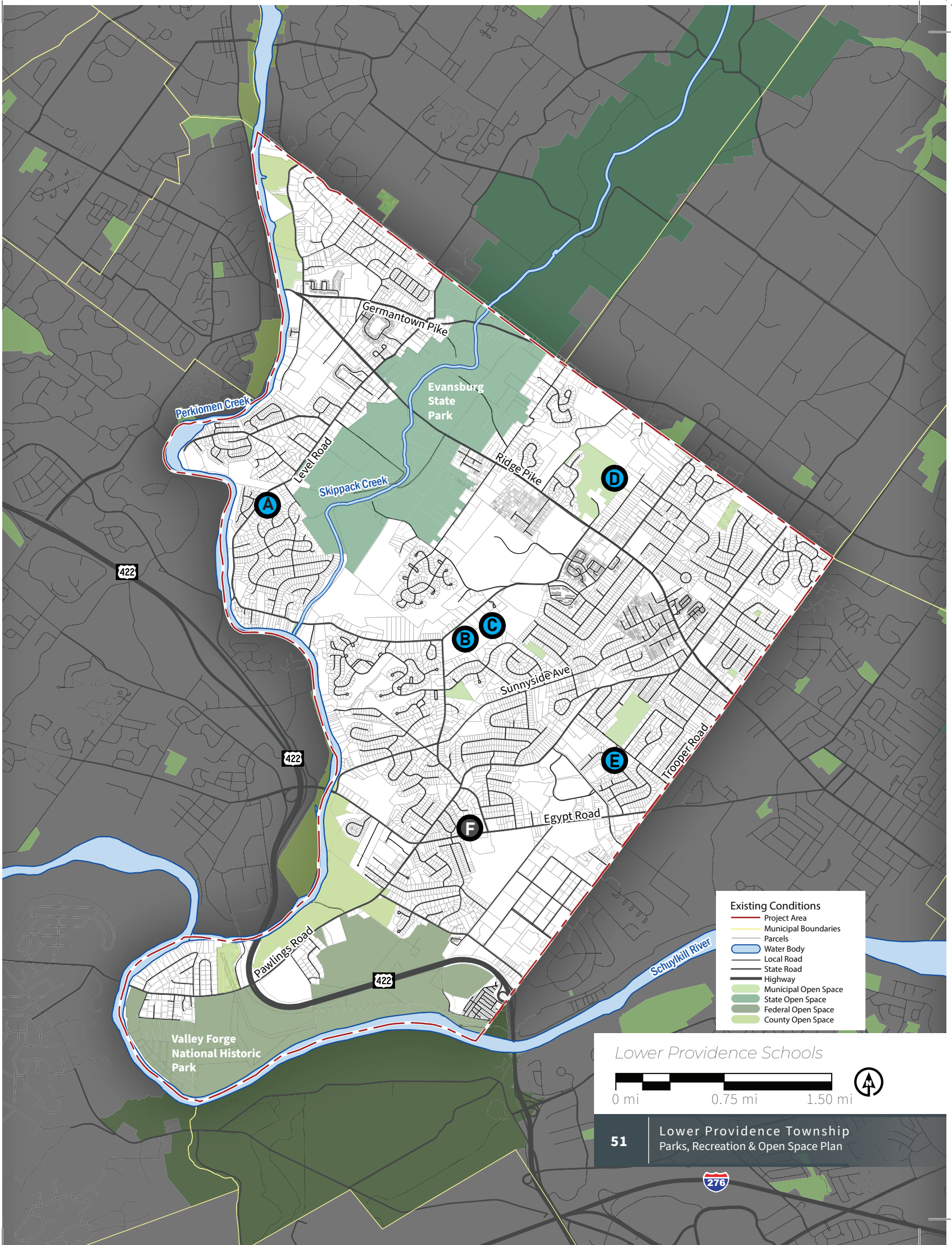
Recreation Facilities: 2 baseball fields, playground

F. Audubon Elementary School [CLOSED]

While buses are provided for all MSD students, it is important to consider safe walkable connections to school facility and bus stops within Lower Providence.

In 2017 Methacton School District (MSD) closed the Audubon Elementary School (F) located on Egypt Road. While the school facility is aged and requires upgrades such as air conditioning, there may be opportunity to work with MSD to consider Township indoor recreation use of this location. This is discussed further in chapter 3, recommendations.





Existing Conditions

- Project Area
- Municipal Boundaries
- Parcels
- Water Body
- Local Road
- State Road
- Highway
- Municipal Open Space
- State Open Space
- Federal Open Space
- County Open Space

Lower Providence Schools





Roadways

Lower Providence Township has a complex system of roads organized by the following roadway hierarchy:

Expressway

- Route 422: PennDOT

Principal Arterial

- Egypt Road: PennDOT
- Trooper Road (south of Ridge Pike): PennDOT
- Ridge Pike: PennDOT
- Park Avenue (north of Ridge Pike): PennDOT
- Germantown Pike: County

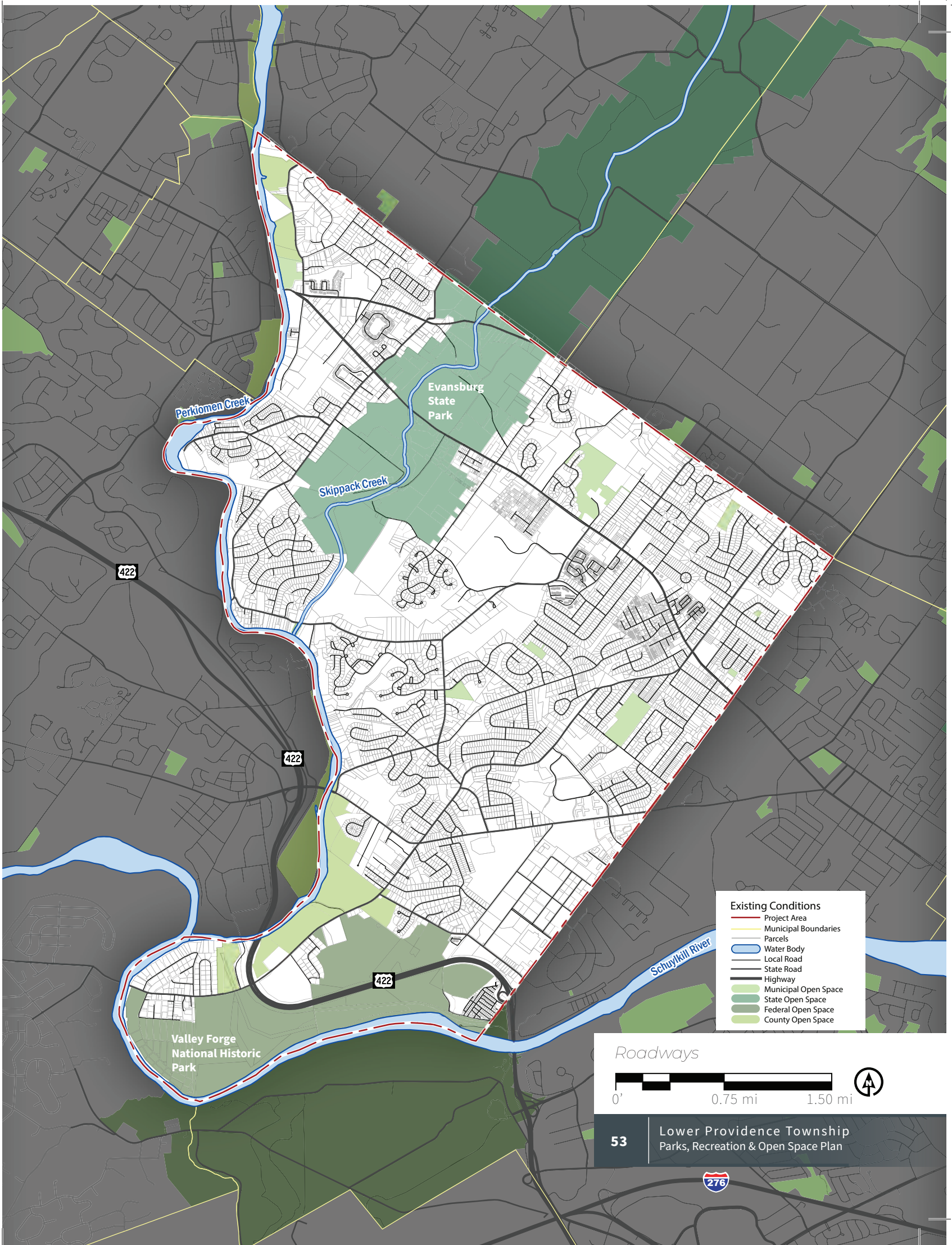
Minor Arterial

- Park Avenue (south of Ridge Pike): PennDOT
- Pawlings Road: PennDOT
- Trooper Road (north of Ridge Pike): PennDOT

Urban/Rural Major Collector,

- Evansburg Road: PennDOT
- Level Road: PennDOT
- Arcola Road: PennDOT
- Eagleville Road: PennDOT
- Audubon Road: PennDOT
- Pinetown Road: Township

All other roads are classified as local roads and are under the township's jurisdiction. Roadway classification and ownership is important as different reviews are required for multi-modal improvements along PennDOT roadways as compared to Township-owned roads.





Public Transportation

The Southeastern Pennsylvania Transportation Authority (SEPTA) operates public transit bus service in Lower Providence Township.

SEPTA operates four bus lines which primarily run on the township's major arterials and provide the following services:

- Route 91 – This bus operates on Ridge Pike and provides service between the Norristown Transportation Center and Graterford in Perkiomen Township.
- Route 93 – This bus also operates on Ridge Pike and provides service between Norristown and Pottstown.
- Route 99 – This bus operates between Norristown and Pottstown, via Route 422, with a stop in Oaks. It runs on Egypt Road in the township.
- Route 131 – This bus provides service to Valley Forge Corporate Center from the Norristown Transportation Center.

It is important that SEPTA bus stops are connected to Township destinations (parks, recreation, businesses, etc.) via the municipal sidewalk network. This systems provides residents the option to travel without use of a car in Lower Providence.

SEPTA Bus Routes








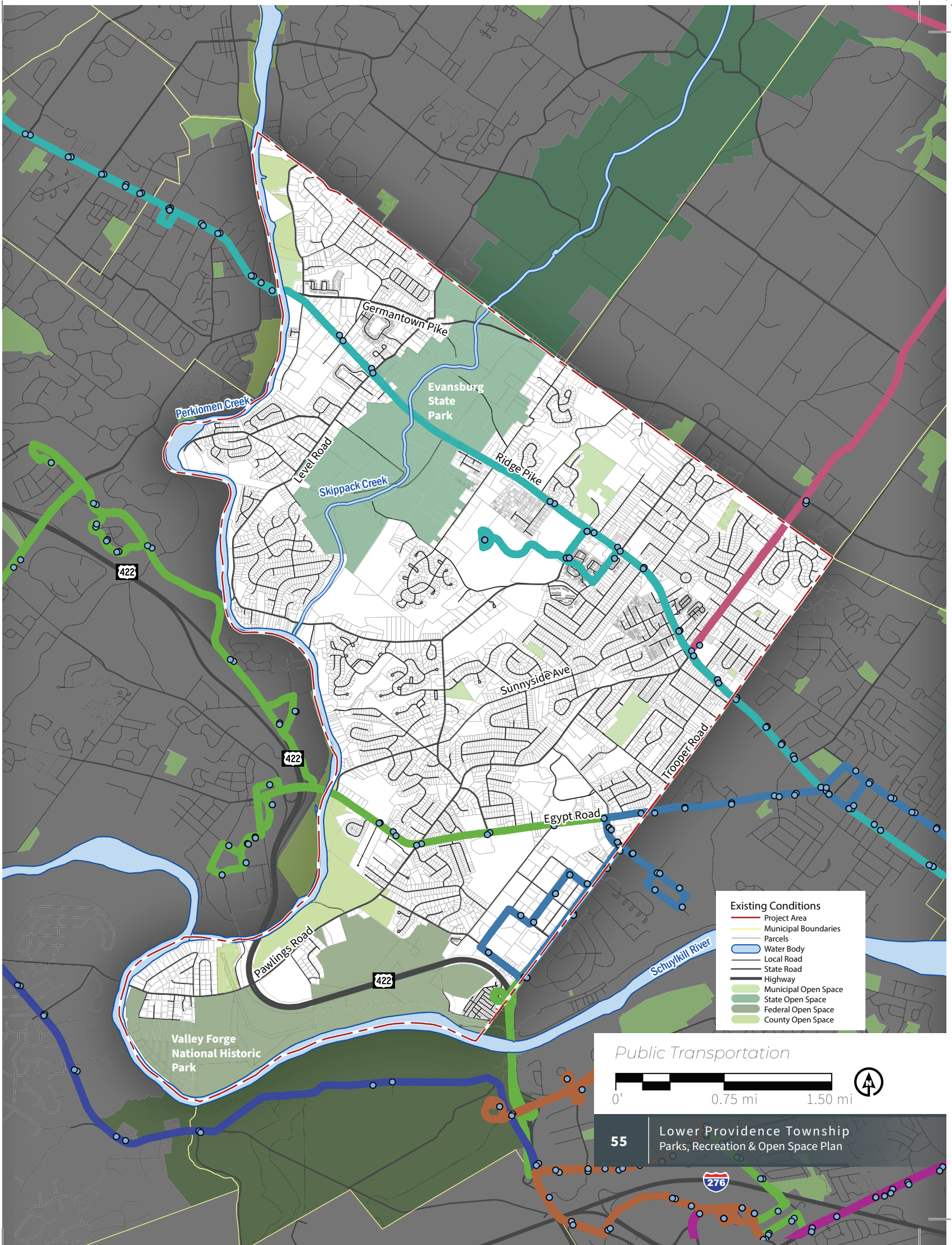
-  Pottstown to Norristown Transportation Center
-  Phoenixville to Norristown Transportation Center
-  Graterford to Norristown Transportation Center
-  Audubon to Norristown Transportation Center
-  Limerick to King of Prussia (Outside Lower Providence Township)
-  Valley Forge to 13th-Market (Outside Lower Providence Township)
-  Bus Stop



Photo: SEPTA





Sidewalks & Trails

Sidewalks

Sidewalks are the backbone of a walkable community. Sidewalks are largely concentrated in the residential developments of Lower Providence Township. High-volume roadways and lack of pedestrian facilities often prevent residents or visitors from walking to the trails, parks, and open space of the Township. Chapter 3 - Recommendations include improvements to fill critical sidewalk gaps.

Trails

Lower Providence Township contains several trails and is a hub for two important regional trails: the Perkiomen Trail and the Schuylkill River Trail. Township residents have nearby access to the trails within the Valley Forge National Historical Park, The John James Audubon Center, and others.

Perkiomen Trail

The Perkiomen Trail is a 19-mile-long multi-use rail trail along the Perkiomen Creek. It begins at the junction with the Schuylkill River Trail near the mouth of the Perkiomen and Valley Forge National Historical Park and ends in Green Lane Park. One of most important trails in the region, there are limited access points to this trail for Lower Providence residents.

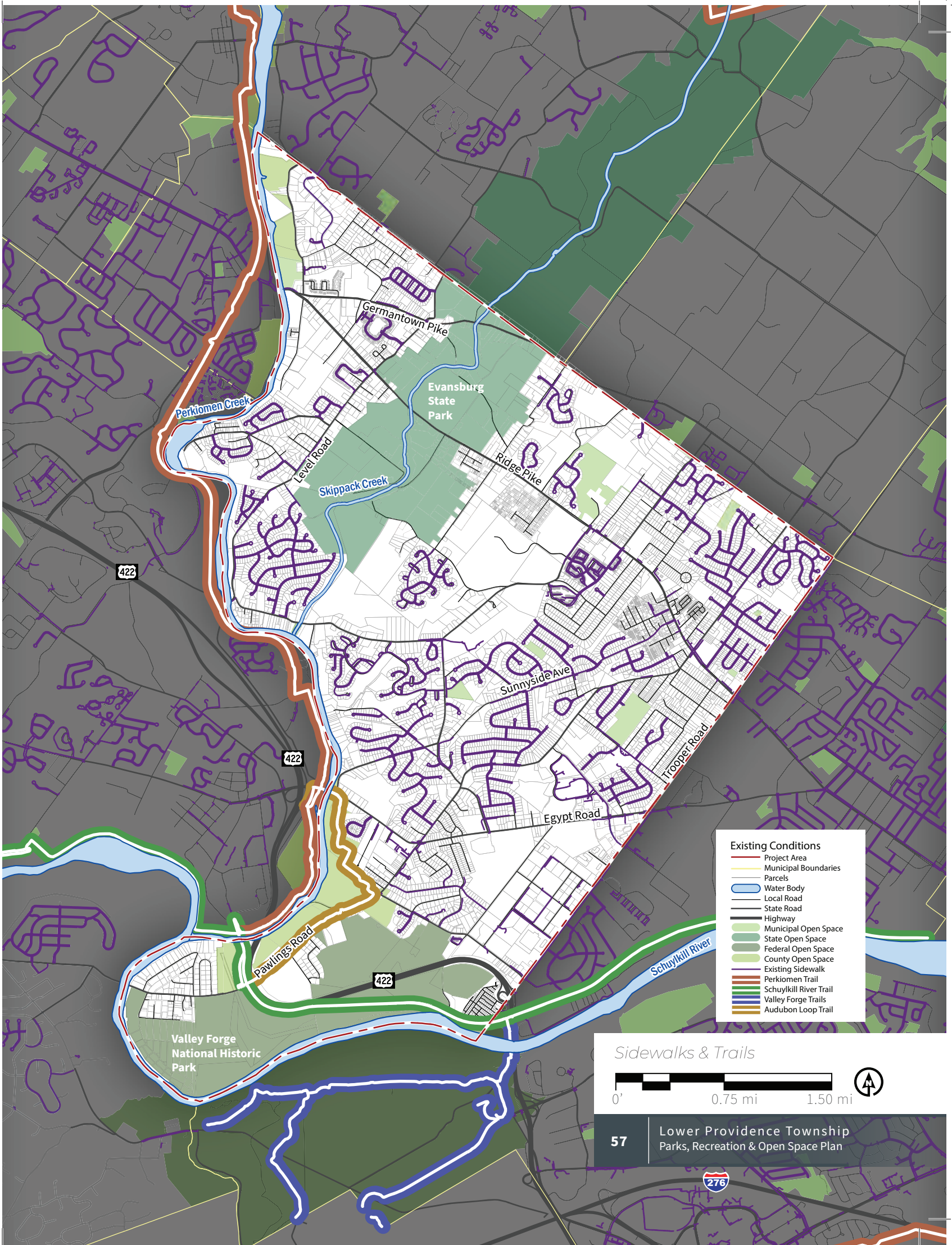
Schuylkill River Trail

The Schuylkill River Trail is a multi-use trail along the Schuylkill River. There are currently about 75 completed miles of the Schuylkill River Trail in sections, including 30-plus miles between Philadelphia and Parker Ford in East Coventry Township, Chester County, and the trail is ultimately planned to run about 140 miles from the river's headwaters in Schuylkill County to Fort Mifflin in Philadelphia.

While used extensively for active recreation, these trail systems are increasingly used as an alternative commuter route. Advances in electronic bicycle batteries will continue to present multi-use trails as viable alternatives to automobile commuting.

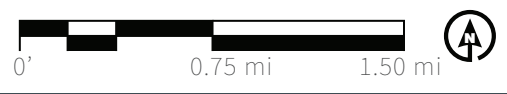
The Audubon Loop Trail

The Audubon Loop Trail connects to the Schuylkill River Trail and the Perkiomen Trail to form a just over 4 mile loop. It travels through the home of John James Audubon estate at Mill Grove.



- Existing Conditions**
- Project Area
 - Municipal Boundaries
 - Parcels
 - Water Body
 - Local Road
 - State Road
 - Highway
 - Municipal Open Space
 - State Open Space
 - Federal Open Space
 - County Open Space
 - Existing Sidewalk
 - Perkiomen Trail
 - Schuylkill River Trail
 - Valley Forge Trails
 - Audubon Loop Trail

Sidewalks & Trails



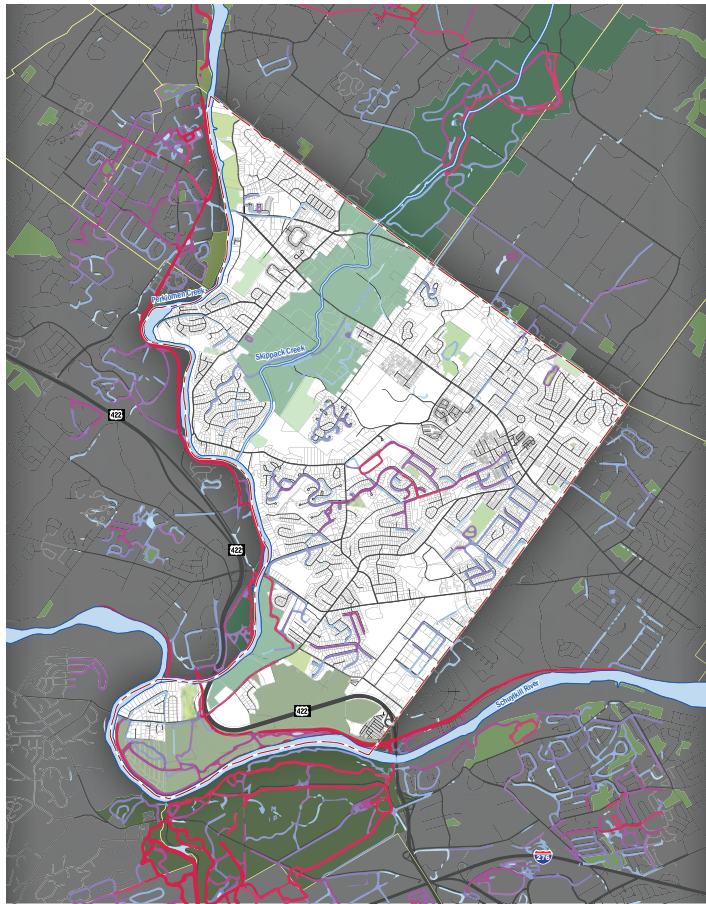


STRAVA Bicycle & Running Data

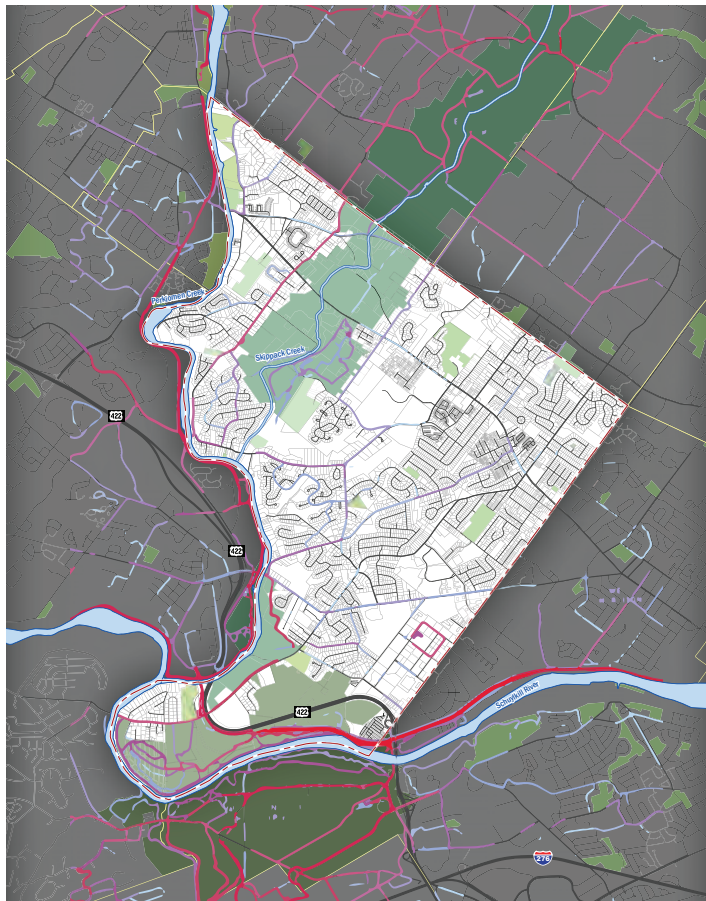
STRAVA is a popular application which utilizes GPS tracking to record routes by walkers, runners, and cyclists. STRAVA heat-mapping was used to locate popular routes within and around Lower Providence Township. This mapping delineates the highest used routes within the Township. STRAVA data provides insight into the most well-traveled and potentially safest routes for future pedestrian and bicycle improvements.

There is limited running data within the interior of the Township, and it is primarily concentrated within neighborhoods. Most runners use the regional trails along the perimeter of Lower Providence. There is little to no run or bicycle usage in the center of the Township along or near Ridge Pike.

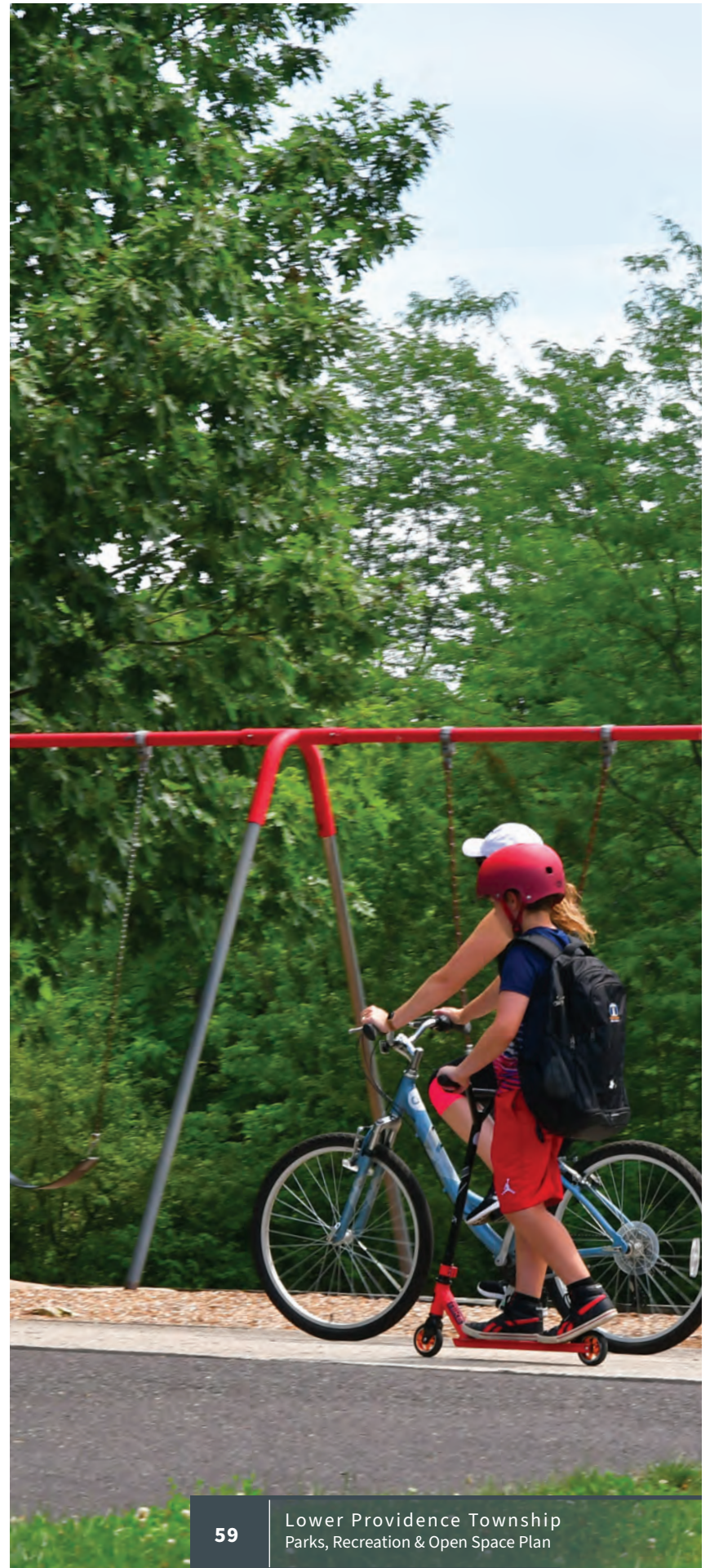
Due to limit bicycle infrastructure, there is limited bicycle data in the interior of the Township, while the most popular cycling routes are located on the edge of the Township on the regional trails.



Strava Running Data



Strava Bicycle Data



Stormwater Management & MS4

WHAT IS MS4?

The MS4 program is mandated under the Clean Water Act and administered by the Department of Environmental Protection (DEP). The goal of this program is to reduce the amount of pollution discharged into waterbodies from separate storm sewer systems (MS4s).

An MS4 is a collection of structures, like a retention basin, roadside inlet, or underground pipe, and they are designed to collect and transport stormwater and discharge it, untreated, into local waterways. MS4s are owned or operated by a city, town or other public entity and are not connected to the sanitary sewer system or wastewater treatment plant.

Through this program, local municipalities must obtain a permit to legally discharge stormwater into local streams and creeks. To meet the terms of this permit, they need to create a Stormwater Management Program (SWMP) that is designed to reduce the amount of pollution entering local waterbodies.

Every SWMP must address 6 focus area, also called Minimum Control Measures (MCMs) that are considered essential for successfully reducing stormwater pollution:

- Public Education and Outreach
- Public Participation and Involvement
- Illicit Discharge Detection and Elimination
- Construction Site Runoff Control
- Post-Construction Runoff Control
- Pollution Prevention/Good Housekeeping for Municipal Operations*

*Perkiomen Watershed Conservancy

Skipack Creek Watershed Alliance

The Skipack Creek watershed area within Montgomery County is within the larger Perkiomen Creek watershed. The Skipack Creek watershed covers an area of 55.8 square miles, and spans Montgomery and Bucks Counties.

Watershed Area (In County):

- 35,645.00 acres

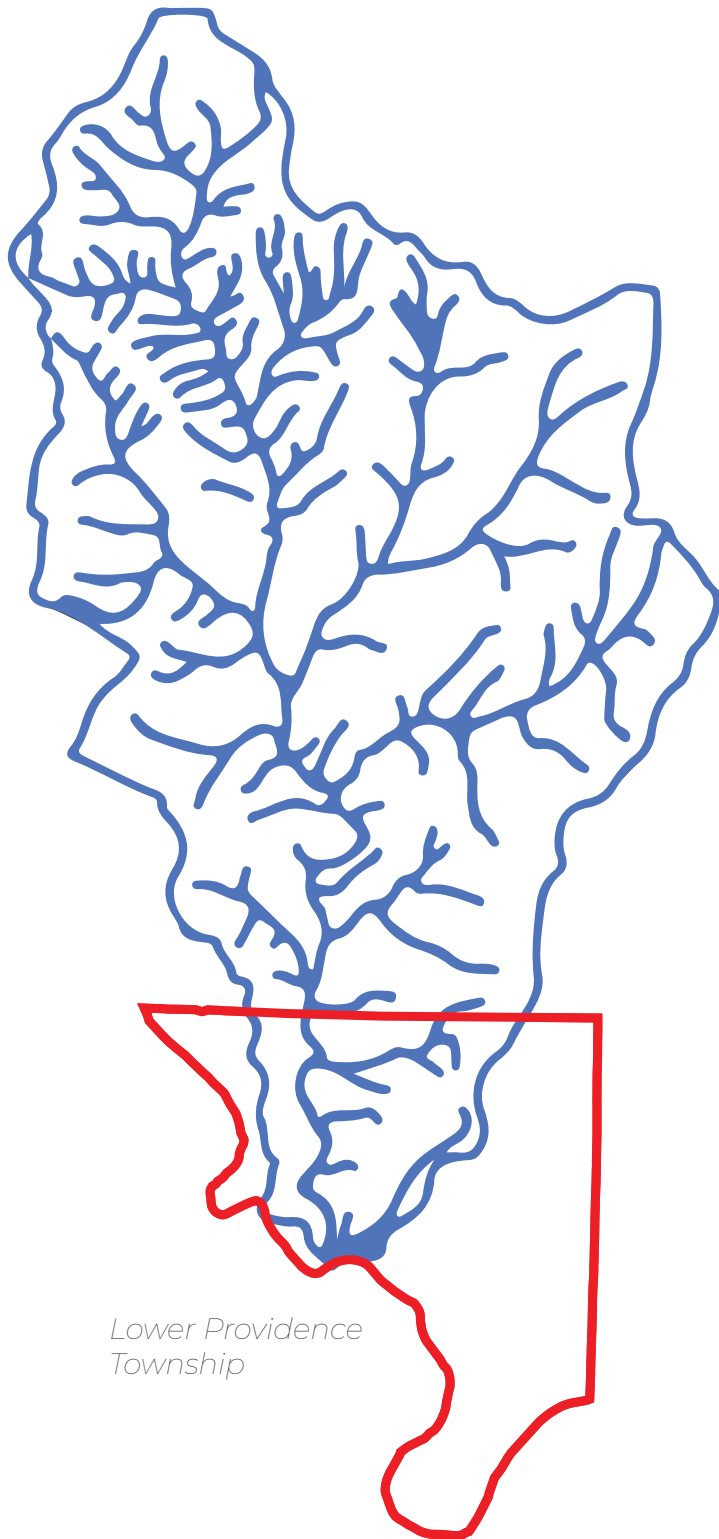
Stream Length (In County):

- 123.00 miles

Lower Providence Township has joined 7 other municipalities within the Skipack Creek watershed to jointly work together to reduce sediment loading to the Skipack Creek.

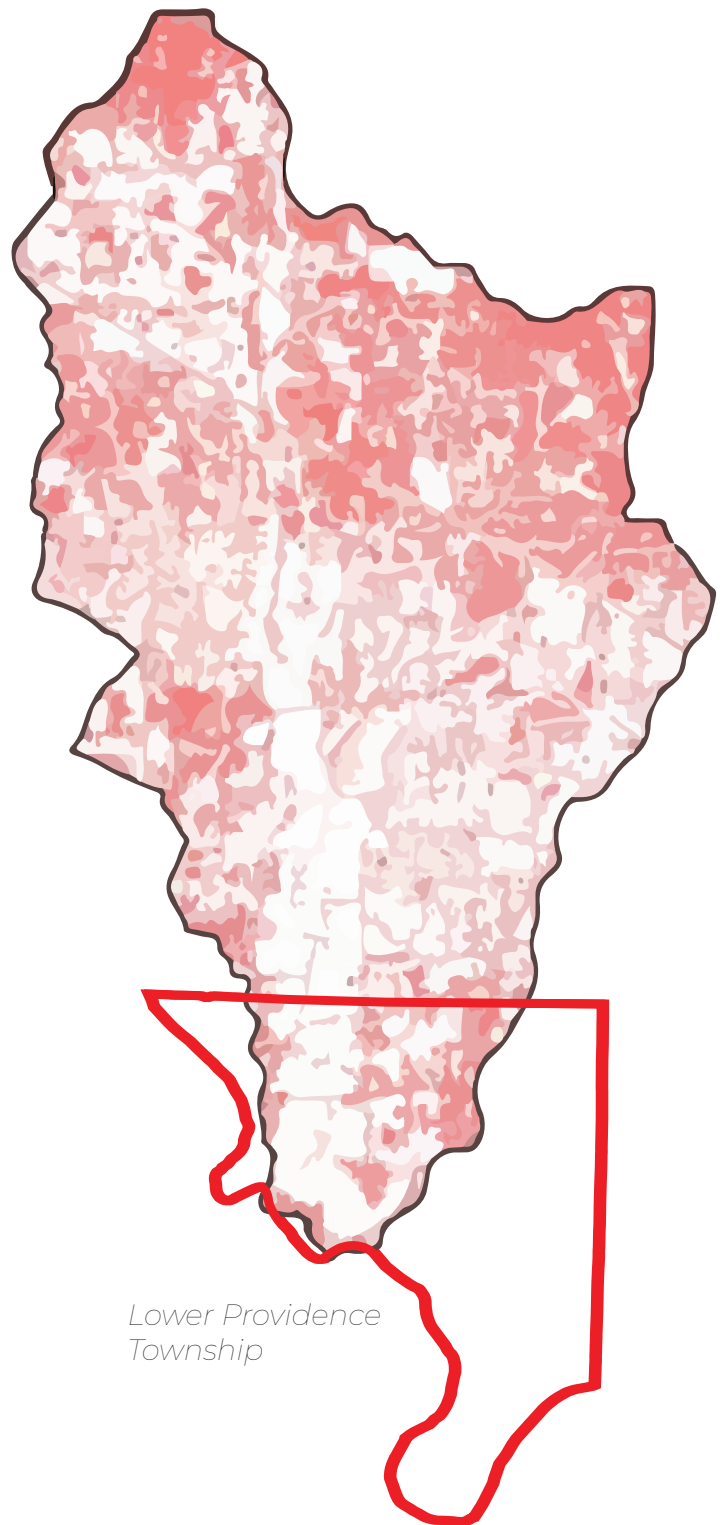
Pollution Reduction Plan

Lower Providence Township has submitted a Pollution Reduction Plan (PRP) to the Pennsylvania Department of Environmental Protection (PennDEP) and awaiting approval of that plan. The PRP includes the use of Best Management Practices (BMPs) for storm water management as part of their Municipal Separate Storm Sewer System (MS4) permit compliance. The PRP already has earmarked some of the projects proposed within the Park and Rec Plan in the Townships Pollution Reduction Plan (PRP). Any funding that can be obtained as part of the Parks, Rec & Open Space Plan that can be used for BMPs will help offset MS4 costs. The Township PRP is not yet approved, and the Eskie Park and MARA Fields (Audubon) basins have previously gone through naturalization. The PRP is trying to take credit for them. Woodrow and Associates prepared the PRP and therefore they should be informed of all of the projects proposed as part of the Parks and Rec Plan.



*Lower Providence
Township*

Tributaries of the Skippack Creek Watershed



*Lower Providence
Township*

*Impervious Surfaces with the Skippack Creek
Watershed*



Parks, Recreation & Open Space Matrix

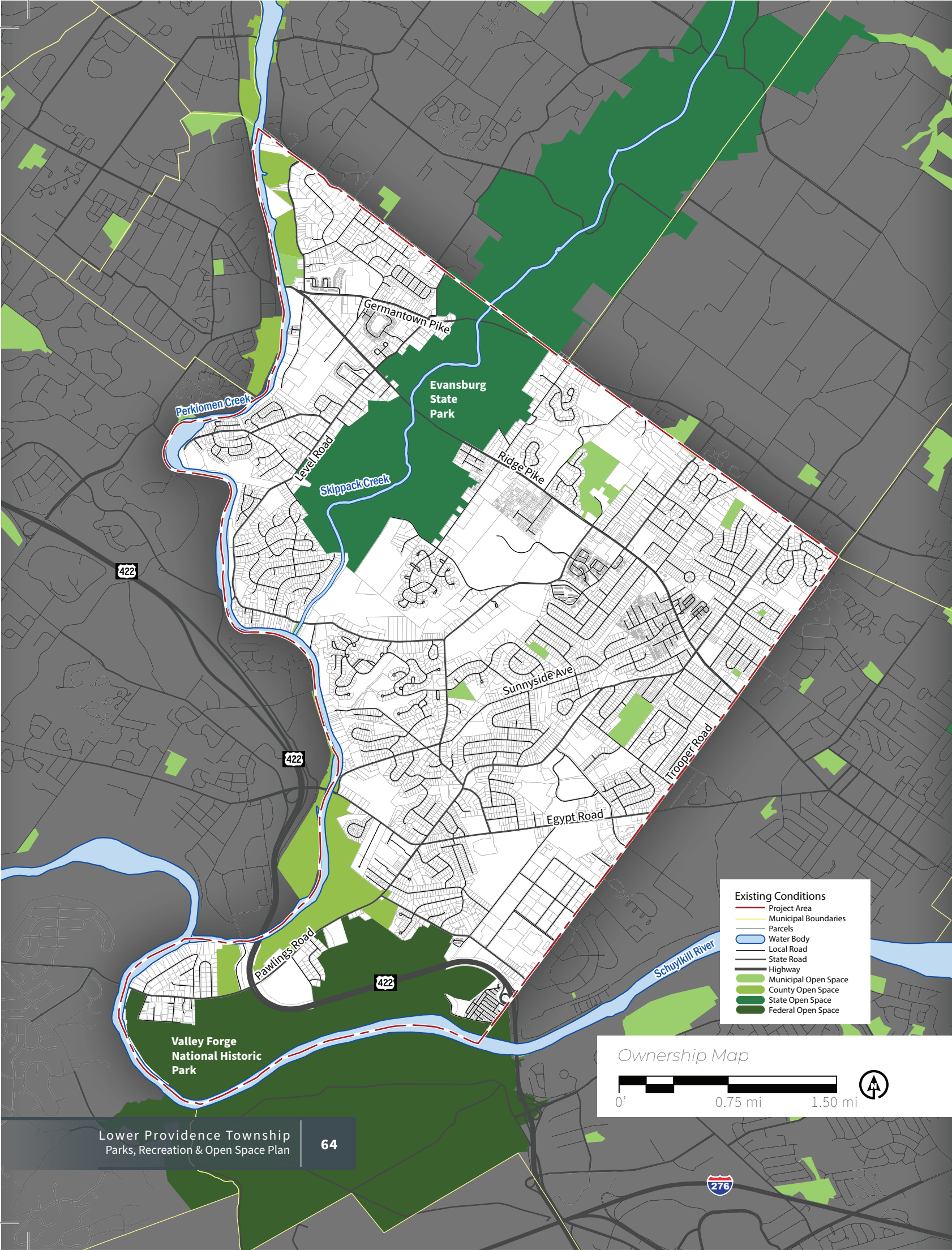
The matrix on the following page breaks down all parklands and open space within the Township, and includes the following information:

- Classification (Federal, State, County, Municipal)
- Location / Address
- Parcel Number
- Acreage
- Facilities



					Paths/Trails			Active Rec Amenities												
Park Name	Location	Parcel	Acres	Restrooms	Gravel / Stone Dust	Asphalt	Earthen / Mown	Multi- Purpose Field	Baseball	Softball	Football	Soccer	Basketball	Tennis	Bocce	Shuffleboard	Playground	Pavilion	Snack/ Concession Stand	Amphitheater
FEDERAL																				
Valley Forge National Historical Park	1400 N Outer Line Dr, King of Prussia, PA 19406		3500 Total (900 in LPT)	X	X	X	X													
STATE																				
Evansburg State Park	851 Mayhall Rd, Collegeville, PA 19426		3349 Total (1060 in LPT)		X		X													
COUNTY																				
Methacton Audubon Recreation Association Fields	1200 Pawlings Rd, Audobon, PA		18.5	X	X				X								X	X	X	
Central Perkiomen Valley Park	River Rd, Collegeville PA		55.0				X													
John James Audubon Center At Mill Grove	1201 Pawlings Rd, Norristown, PA 19403		175.0	X		X	X													
Knights Cricket Field	Pawlings Rd & Station Ave		30.9					X												
Schuylkill River Trail Pawlings Rd Trailhead	0 Pawlings Rd (Pawlings Rd & SRT)		6.4			X														
Pawlings Rd & Gertrude Ave	Pawlings Rd & Gertrude Ave (6 parcels)		10.7																	
MUNICIPAL - Parks																				
Evansburg Point Park (Owned by DCNR, leased to LPT)	160 Level Rd, Collegeville, PA	430007243004	35.6	X	X	X		X			X						X	X	X	
Cranberry Park	125 River Rd, Evansburg, PA	430012304019	19.1				X													
Dell Angelo Park	10 Henry Rd, Trooper, PA	430006151007	2.5			X											X			
Eagleville Park	100 Parklane Dr, Eagleville, PA	430012019007	64.9	X		X	X		X		X		X	X	X	X	X	X		X
Eskie Park	524 Church Rd, Eagleville, PA	430002290007	10.8	X		X		X	X				X				X	X		
Hoy Park	3500 Arcola Rd, Collegeville, PA	430000514001	3.8			X														
Level Rd School House Meeting Room	198 Level Rd, Collegeville, PA	430007384007	0.7	X																
Francesco A. Mascaro Memorial Field & Community Park (privately owned, leased to LPT)	2759 Woodland Ave, Trooper, PA	430016105007	10.0	X		X			X	X							X	X	X	
Pond View Drive Park	717 Pond View Dr, Eagleville, PA	430011332703	5.3																	
Redtail Park	1117 Redtail Rd, Eagleville, PA	430000454007	8.8						X			X								
Sherwood Park	Ashley Cir, Trooper, PA	430000313004	1.0		X												X			
SCHOOL DISTRICT																				
Arrowhead Elementary	232 Level Rd, Collegeville, PA		12.5					X	X				X				X			
Arcola Intermediate School	4001 Eagleville Rd, Eagleville, PA		68.0					X	X	X	X	X		X						
Audubon Elementary (closed)	2765 Egypt Rd, Eagleville, PA		14.0					X									X			
Eagleville Elementary	125 Summit Ave, Eagleville, PA		18.6					X	X	X							X			
Woodland Elementary	2700 Woodland Ave, Eagleville, PA		14.6					X	X	X			X				X			





Parks, Recreation & Open Space Inventory

There is a complex network of park, recreation, and open space facilities in Lower Providence Township. Residents and visitors have access to a variety of Federal, State, County, Municipal, and private recreation areas, which include:

- Federal**
- Valley Forge National Historic Park
- State**
- Evansburg State Park
- County**
- Central Perkiomen Valley Park
 - Gabriel's Field / Knight's Cricket Field
 - MARA Baseball/Softball Fields
 - John James Audubon Center
- Municipal**
- Eagleville Park
 - Eskie Park
 - Redtail Park
 - Pond View Park
 - Hoy Park
 - Evansburg Point Park, Warrior Field (Owned by State DCNR, leased to Township)
 - Level Road School House
 - Cranberry Park
 - Sherwood Park
 - Dell Angelo Park
- Private**
- Mascaro Memorial Field and Community Park
 - IBEW (International Brotherhood of Electrical Workers) Local 98 North Park
 - Hideaway Day Camp
 - Lower Providence Rod & Gun Club
 - Club At Shannondell (land owned by Township - leased to Shannondell and privately operated)

Federal

Valley Forge National Historic Park: (Approximately 900 acres within Lower Providence Township)

- Valley Forge National Historical Park is the site of the third winter encampment of the Continental Army during the American Revolutionary War. The National Park Service ts the site and interprets the history of the Valley Forge encampment. The park contains historical buildings, recreated encampment structures, memorials, museums, and recreation facilities.
- The park is 3,500 acres in total and is visited by over 1.2 million people each year. The park also provides 26 miles (42 km) of hiking and biking trails, which are connected to a robust regional trails system. Wildlife watching, fishing, and boating on the nearby Schuylkill River also are popular.
- The approximately 230 acres of park north of Route 422 in the Township have relatively few connections or trails.

State

Evansburg State Park (Approximately 1,060 acres within Lower Providence Township)

- Evansburg State Park is a 3,349-acre Pennsylvania state park operated by DCNR and host municipalities include Lower Providence, Lower Salford, Skippack, Towamencin, and Worcester Townships. The park has a variety of habitats including forests, meadows, old fields, and farmland. Recreational opportunities include picnicking, golf, ball fields, biking, hiking, hunting, horseback riding, and fishing.
- Evansburg State Park has 26 miles of trails that are open to hiking, horseback riding, cross-country skiing, and mountain biking. There are minimal trail connections between the trails of host municipalities / regional trails and Evansburg State Park.



Evansburg State Park. Photo Credit: dcnr.gov



Valley Forge National Historic Park



MARA Fields



Gabriel's Field

County

Central Perkiomen Valley Park (Approximately 55 acres in Lower Providence Township)

- Central Perkiomen Valley Park is situated along the Perkiomen Creek. This 800-acre park extends over 10 municipalities, with 55 acres in Lower Providence. The Lower Providence section north of Ridge Pike along River Road is largely undeveloped lowland floodplain area.

Gabriel's Field / Knight's Cricket Field (31 acres)

- Field leased by Township - With sublease user agreements for the cricket fields.
- Gabriel's Field / Knight's Cricket Field is an open multi-purpose field area with access to the Pawlings Road trailhead.

John James Audubon Center at Mill Grove (175 acres)

- Built in 1762 and listed on the National Register of Historic Places, Mill Grove was the first American home of renowned artist, author, and naturalist John James Audubon.
- The 175-acre estate serves as an educational center of the National Audubon Society. A haven for birds and wildlife, the property includes more than seven miles of trails.

MARA Baseball/Softball Fields (18 acres)

- This County-owned facility is used extensively for local ballgames by the Audubon Recreation Association who, in Fall 2020, merged with the Methacton Baseball Association to become the Methacton Audubon Recreation Association (MARA). Facilities are leased to the Township who sublease ballfield facilities to MARA.

Facilities include:

- 7 baseball fields
- Playground apparatus
- Picnic tables
- Pavilion
- Snack stand

Municipal

Cranberry Park (19.08 acres)

- Cranberry Park is adjacent to the Central Perkiomen Valley Park. It contains one small parking area and the rest of the park is open space.

Dell Angelo Park (2.50 Acres)

- Located north of Ridge Pike, Dell Angelo Park is a well-used community park. Accessible by sidewalk via neighborhoods to the north and east, this park includes ample seating areas and a playground. Dell Angelo's established tree canopy is among the nicest of the Township park facilities and should be viewed as the standard for other facilities.

Facilities Include:

- Walking path
- Picnic tables
- Playground apparatus

Eagleville Park (63.60 acres)

The largest municipal park in Lower Providence Township, Eagleville Park provides several facilities which are used by a wide array of Township residents. The park shares space with the Township administration building and library and a walking trail leads to adjacent Eagleville Elementary School.

Facilities include:

- 190-foot baseball field (Gaugler Field)
- 1 football field
- 1 basketball court
- 4 tennis courts
- 2 shuffleboard courts
- Community lawn area
- Bathrooms
- Playground apparatus
- Pavilion with tables and grills
- Walking path
- Amphitheater
- Nature trail
- 2 bocce courts



Dell Angelo Park



Eagleville Park



Eagleville Park



Eskie Park

Eskie Park (10.80 acres)

Located between the Township public works facility and forested areas to the west, agriculture fields to the north, residences to the east, Eskie Park is an important component of the municipal park system.

Facilities Include:

- 2 baseball fields
- 1 basketball court
- ½ mile walking path
- Bathrooms
- Playground apparatus
- Pavilion with tables and grills



Evansburg Point Park

Evansburg Point Park / Warrior Field (35.60 acres)

Located within Evansburg State Park, Lower Providence Township has a lease agreement with Evansburg State Park and DCNR to use this area for active recreation. Used extensively by local sports organizations for football and cheerleading practices and games, Evansburg Point Park is a vital component of the Township's active recreation park system.

Facilities Include:

- 2 baseball fields
- 1 basketball court
- ½ mile walking path
- Bathrooms
- Playground apparatus
- Pavilion with tables and grills



Hoy Park

Hoy Park (3.76 acres)

Located at the convergence of the Skippack and Perkiomen Creeks, Hoy Park has parking, a short trail, and water boat access. Facilities Include:

Facilities Include:

- Handicap accessible fishing pier
- Benches
- Nature area

Level Road Schoolhouse (.67 acres)

The Level Road Schoolhouse is a small indoor facility.

Facilities Include:

- Large multi-purpose meeting room
- Restroom facilities

Pond View Park (5.32 acres)

Pond View Park is a small , largely wooded neighborhood park. It includes one small mown area and the majority is forested. This park should have little to no development (other than earthen trails) and re-main a quiet, peaceful location for neighbors to enjoy nature.

Redtail Park (8.83 acres)

Redtail Park is used by local soccer organizations as well as local Methacton School District students.

Facilities Include:

- 1 baseball field (lighted)
- 1 soccer field

Sherwood Park (1.01 acres)

Sherwood Park is a small neighborhood park which serves the nearby community. Development of this park should focus on improved shade and ADA play facilities.

Facilities Include:

- Playground apparatus



Redtail Park



Level Road Schoolhouse



Sherwood Park

Private Recreation

Mascaro Memorial Field and Community Park (10 acres) Privately-Owned and leased to Township

Owned by J.P. Mascaro & Sons, this is a high-quality facility which includes new baseball and playground facilities. Mascaro works with the Township and private recreation groups to facilitate use of this facility. Lower Providence should continue to work with this important community organization to potentially implement improvements.

Facilities Include:

- Baseball, softball fields - one lighted field
- Bleachers, concession stand, press box
- Pavilion
- Playground apparatus
- Walking path

Club At Shannondell (97 acres) - Township-Owned and privately operated

Facilities Include:

- Public Golf course
- Seasonal Swim Center

Hideaway Day Camp (72 acres)

Facilities Include:

- Pool
- Ropes courses
- Rock wall
- Zip line
- 18-hole miniature golf course
- Gaga courts
- Volleyball
- Basketball

IBEW (International Brotherhood of Electrical Workers) Local 98 North Park (45 acres)

Facilities Include:

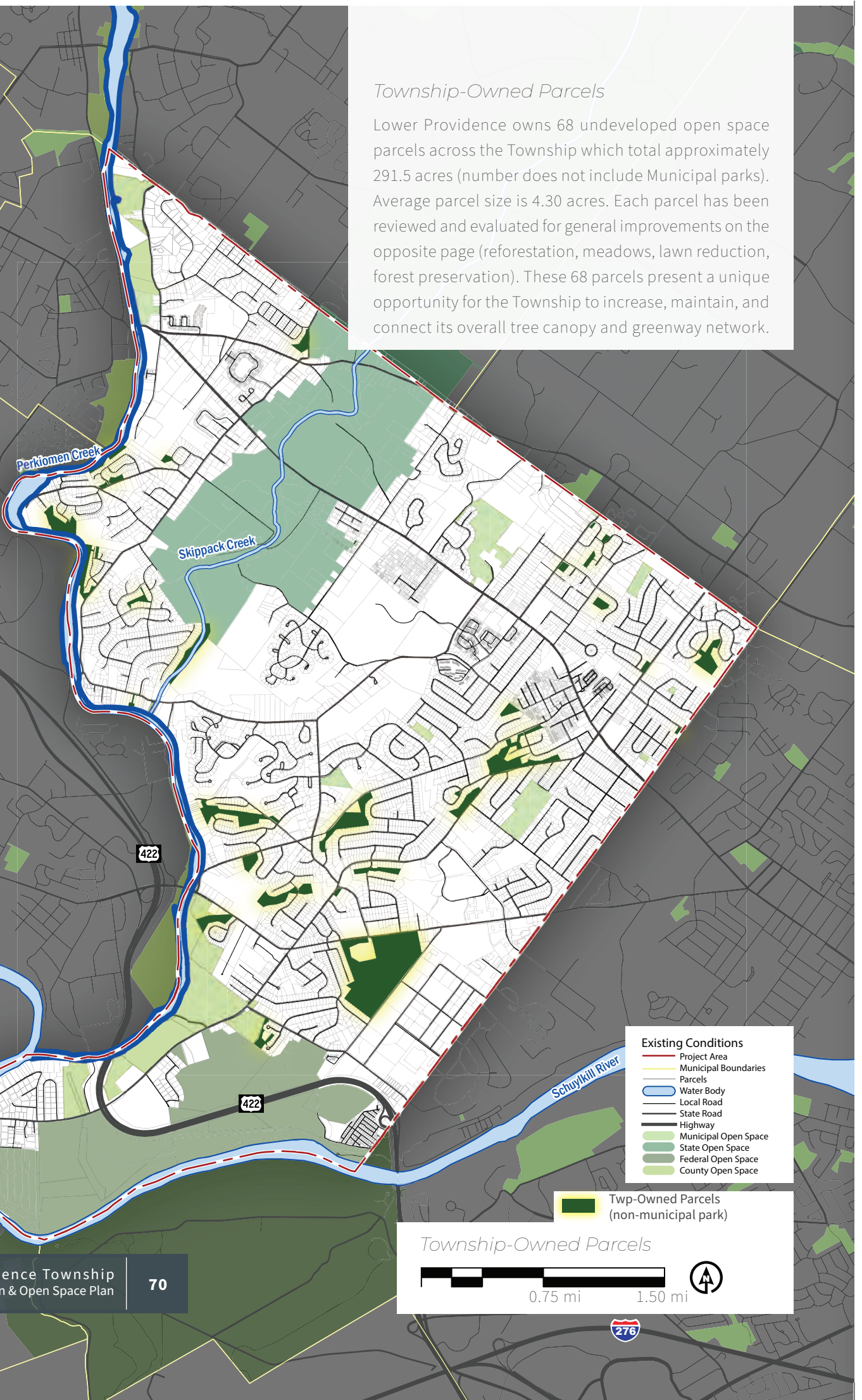
- Playground
- Baseball field
- Pavilions

Lower Providence Rod & Gun Club (47 acres)

This facility is a private recreational club which includes shooting sports, hunting, archery and fishing.

Township-Owned Parcels

Lower Providence owns 68 undeveloped open space parcels across the Township which total approximately 291.5 acres (number does not include Municipal parks). Average parcel size is 4.30 acres. Each parcel has been reviewed and evaluated for general improvements on the opposite page (reforestation, meadows, lawn reduction, forest preservation). These 68 parcels present a unique opportunity for the Township to increase, maintain, and connect its overall tree canopy and greenway network.



MUNICIPAL - Open Space				
Park Name	Location	Parcel	Acres	Notes
Appledale Rd	Appledale Rd	430000358004	4.0	Maintain as Forested
Apple Valley Ln	Apple Valley Ln	430008130296	4.0	Reduce Lawn - Replace with Meadows; Reforest
Apple Valley Ln	Apple Valley Ln	430008130323	0.7	Reduce Lawn - Replace with Meadows; Reforest
Arcola Rd	3521 Arcola Rd	430000634007	1.2	Maintain as Forested; Riparian
Brandywine Drive	Brandywine Dr & Sky Dr	430001493228	1	Maintain as Forested
Breckenridge Blvd	Breckenridge Blvd	430001553303	1.2	Maintain as Forested & Detention Basin
Casselberry Farm	Casselberry Dr	430002079578	5.5	Maintain as Forested
Casselberry House	275 Evansburg Rd, Collegeville, PA	430015518648	4.0	Reduce Lawn - Replace with Meadows; Reforest
Club at Shannondell (owned by LPT, leased to Shannondell)	2750 Egypt Rd, Audobon, PA	430003454004	97.2	Maintain as Open Space
Club at Shannondell (owned by LPT, leased to Shannondell)	2750 Egypt Rd, Audobon, PA	430003451016	9.5	Maintain as Open Space
Colony Homes, Mt. Kirk Ave	E Mt. Kirk Ave & Walker Ln	430008948153	1.5	Reduce Lawn - Replace with Meadows; Reforest
Stoughton Rd	Stoughton Rd	430013849679	2.6	Reduce Lawn - Replace with Meadows; Reforest
Collegeville Rd	Collegeville Rd	430002666468	0.4	Maintain as Forested
Denise Court	0 Denise Ct (adjacent to Redtail Park)	430003334016	3.8	Maintain as Forested & Detention Basin
Denise Court	0 Denise Ct	430003331082	0.8	Maintain as Forested
Elizabeth Dr	Elizabeth Dr & E Mt. Kirk Ave	430003730205	0.5	Maintain as Forested
Farmhouse Dr	Farmhouse Dr NW of circle	430004143242	2.9	Maintain as Forested
Featherbed Ln	Featherbed Ln	430004261007	5.7	Maintain as Forested
Featherbed Ln	Featherbed Ln	430004255004	1.4	Maintain as Forested
Getty St	Getty St	430005536001	0.1	Maintain as Forested
Greenbriar Court	Greenbriar Ct	430009542063	6.8	Maintain as Forested; Riparian
Indian Woods Ln	Indian Woods Ln & along Perkiomen Creek	430006506345	7.1	Maintain as Forested; Riparian
Indian Woods Ln	Indian Woods Ln & Lenape Dr	430006506084	0.8	Reduce Lawn - Replace with Meadows; Reforest
Jode Road	Jode Rd, south of S Park Ave, along Mine Run	430006592007	1.7	Maintain as Forested
Jode Road	Jode Rd, south of S Park Ave, along Mine Run	430006613004	3.1	Maintain as Forested
Level Road	198 Level Rd	430007384007	0.2	Maintain as Forested
Lloyd Lane	Lloyd Ln & Trooper Rd	430007589369	1.2	Reduce Lawn - Replace with Meadows; Reforest
Mt. Kirk Ave	Mt. Kirk Ave	430008948153	1.5	Reduce Lawn - Replace with Meadows; Reforest
Peacock Drive	Peacock Dr	430010872623	0.5	Maintain as Forested & Detention Basin
Park Avenue	S Park Ave & Woodland Ave	430010171001	5.7	Maintain as Forested
Park Avenue	S Park Ave	430002713025	0.7	Maintain as Forested
Pinetown Rd	Pinetown Rd & Brenda Ln	430011236007	4.3	Maintain as Forested
Prescott Circle	Prescott Cir	430011333144	1.7	Maintain as Forested
Redtail Rd	Redtail Rd	430011471348	0.1	Maintain as Forested - Trail Connection
Shearwater Drive	Shearwater Dr along Mine Run	430013120004	9.5	Maintain as Forested
Shearwater Drive	Shearwater Dr along Mine Run	430001072007	9.5	Maintain as Forested
Skipack Creek	Barrington Rd	430001045001	16.4	Maintain as Forested - Trail Connection
Skyline Circle	Skyline Cir & Featherbed Ln	430013443203	0.8	Reduce Lawn - Replace with Meadows; Reforest
Skyline Drive	Skyline Dr	430013585007	5.5	Maintain as Forested
Still Meadow Dr	Still Meadow Dr	430013756205	1.3	Maintain as Detention Basin
Sweetgum Lane	Sweetgum Lane	430017552333	1.3	Maintain as Forested
Sunnyside Avenue	Sunnyside Ave between Eagleville Rd & Ringneck Rd	430014170007	14.1	Reduce Lawn - Replace with Meadows; Reforest
Sunnyside Avenue	Sunnyside Ave	430014210039	3.0	Maintain as Forested
Upper Mine Run	Park Ave & Appledale Rd	430010168004	4.4	Maintain as Forested
Upper Mine Run	Park Ave & Miami Ave	430010162109	5.7	Maintain as Forested
Upper Mine Run	Sunnyside Ave & Midland Ave	430014114117	4.9	Maintain as Forested
Upper Mine Run	Sunnyside Ave & Midland Ave	430014114144	1.5	Maintain as Forested
Walker Lane	Walker Ln	430015585509	2.9	Reduce Lawn - Replace with Meadows; Reforest
Water Fall Circle	Water Fall Cir	430017780213	10.7	Maintain as Forested; Riparian
Water Fall Circle	Water Fall Cir	430017780231	0.7	Maintain as Forested; Riparian
Windswept Lane	Windswept Ln (& Fair View Ln)	430015993389	9.7	Reduce Lawn - Replace with Meadows; Reforest
Woods Edge Rd	Woods Edge Rd	430016283009	1.7	Maintain as Forested
Yerkes Road	Yerkes Rd & Fairhill Dr	430016514102	1.8	Maintain as Forested
Yerkes Road	Yerkes Rd & Fairhill Dr	430016513103	0.8	Maintain as Forested
Third St	Third St	430014620007	0.1	Maintain as Forested
Fourth St	Fourth St	430004981007	0.1	Maintain as Forested
Fourth St	Fourth St	430004882007	0.1	Maintain as Forested
Fourth St	Fourth St	430004903004	0.4	Maintain as Forested
Fourth St	Fourth St	430004897001	0.4	Maintain as Forested
Fifth St	Fifth St	430004465001	0.05	Maintain as Forested
Fifth St	Fifth St	430004516004	0.1	Maintain as Forested
Sixth St	Sixth St	430013300004	0.1	Maintain as Forested
Sixth St	Sixth St	430013237004	0.1	Maintain as Forested
Sixth St	Sixth St	430013207007	0.1	Maintain as Forested
Sixth St	Sixth St	430013243007	0.05	Maintain as Forested
Seventh St	Seventh St	430013060001	0.05	Maintain as Forested
Seventh St	Seventh St	430013048004	0.05	Maintain as Forested
Sixth St	Sixth St	430013231001	0.05	Maintain as Forested
Sixth St	Sixth St	430013201004	0.05	Maintain as Forested

Total: 291.5

Community Benchmarking

Benchmarking is a process of evaluating or comparing something against a certain criteria. Community benchmarking was completed to evaluate the park system of Lower Providence Township with similarly sized communities that have populations similar to Lower Providence's projected 2040 population of 28,448 to determine future recreational needs. A comparison analyzed both the amount of recreational space and amenities provided and used National Recreation and Parks Association (NRPA) Metrics as a guide. Recreational facilities from six municipalities were used to determine the extent of either deficit or surplus of amenities:

- Upper Merion Township, Montgomery County, PA – 2019 Population: 33,027
- Lower Makefield Township, Bucks County, PA – 2019 Population: 32,802
- Radnor Township, Delaware County, PA – 2019 Population: 31,875
- Cranberry Township, Butler County, PA – 2019 Population: 31,632
- Tredyffrin Township, Chester County, PA – 2019 Population: 29,396
- York Township, York County, PA – 2019 Population: 28,776

2020 NRPA Park Metrics

The National Recreation and Park Association compiles park and recreation agency information from across the country. NRPA understands that there is no single set of standards for parks and recreation to address the uniqueness of a community. The organization creates averages for total acres of parkland, total number of parks, facility type totals and average operating expenses to assist planners with addressing parks and recreation needs within a community. According to these metrics, for agencies serving jurisdictions of 20,000 – 49,999 residents:

There are typically 9.6 acres of parkland per 1000 residents (NRPA).

Lower Providence has 162.5 acres of Township-owned parkland (number includes Evansburg Point Park [DCNR -owned, leased for TWP use] & Mascaro Field [privately owned, leased for TWP use]). Using this number:

Based on the 2018 population estimate of 26,418 residents, Lower Providence has 6.1 acres of parkland per 1000 residents and would need an additional 92 total acres to meet the above NRPA metric.

Combining all Federal, State, County, and Township parkland, there are 2400.2 acres within the boundaries of Lower Providence. Using this number:

Based on the 2018 population estimate of 26,418 residents, Lower Providence exceeds this metric by 2,217.8 acres.

Based on the projected 2040 population, Lower Providence exceeds this metric by 2,198.3 acres.

There is typically one playground for every 3,157 residents (NRPA).

Based on the current population, Lower Providence exceeds this metric by 2-3 playgrounds.

Based on the projected 2040 population, Lower Providence exceeds this metric by 2 playgrounds.

There is typically one community center for every 26,280 residents.

The population threshold generally used as a baseline to consider the development of a community center is 15,000 residents. Lower Providence meets this threshold.

The Township currently has one community center at the Level Road Schoolhouse. At the 2018 population of 26,418, there are 138 more residents per community center than the NRPA metric. Based on the 2020 projection, there will be 399 more residents per community center; and based on the 2040 projection, there will be 2,168 more residents per community center than the NRPA metric. A second community center is recommended.

There is typically one recreation center for every 25,716 residents (NRPA).

There is typically one performance amphitheater for every 30,577 residents.

Based on the 2018 estimate and 2020/2040 projections, Lower Providence meets this metric with the Township's one existing amphitheater.

However, in consideration of current and foreseeable future social distancing measures, it would be wise to consider the addition of at least one outdoor performance space to accommodate an increased demand for outdoor family and community events.

	Lower Providence Township	Average	Difference from Average	Difference from Maximum
2040 Population Projection (ACS)	28,448	30,851	-2,403	-4,579
Area (Sq. Miles)	15.6	19	-3	-1.6
2040 Pop. Density per Sq. Mile	1,824	1,695	128	684
# of Parks	11 *	16	-5	-24
Park Area (Acres)	162.5	335	-172	-497.5
Facility				
Baseball / Softball	14	11	3	-1
Basketball	2	6	-4	-9
Biking / Hiking Trail / Walking Track	6	6	0	-10
Football	1	1	0	-2
Multipurpose Field	2	5	-3	-8
Pavilion / Rental Space	5	4	1	-2
Pool	0	1	-1	-5
Tennis	4	7	-3	-12
Bocceball Court	1	1	0	-1
Pickleball Court	0	1	-1	-5
Skate Park	0	0	0	-1
Soccer	1	4	-3	-10
Volleyball	0	3	-3	-10
Playgrounds	7	9	-2	-8
Disc Golf	0	0	0	0
Street Hockey / Ice Skating	0	1	-1	-1
Dog Park	0	1	-1	-1
Amphitheater	1	1	0	0
Community Garden	0	0	0	-1
Recreation Center	0	0	0	-1

*11 parks used for benchmarking include: Warrior Field, Cranberry Park, Dell Angelo Park, Eagleville Park, Eskie Park, Hoy Park, Level Road Schoolhouse, Mascaro Field, Pond View Park, Redtail Park, Sherwood Park.

Overall, when comparing Lower Providence to the benchmarked municipalities, the following recreational facilities are noted with the amount of facilities needed to equal the average number of facilities of its neighbors:

- 4 basketball courts
- 3 multi-purpose fields
- 1 pool
- 3 tennis courts
- 1 pickleball court
- 3 soccer fields
- 3 volleyball courts
- 2 playgrounds
- 1 street hockey / ice skating facility
- 1 dog park



Existing Recreation Opportunities for Boys & Girls

It is important to provide ample recreation and sports programming for both males and females.

The following pages detail existing recreation opportunities within Lower Providence Township.

Methacton Audubon Recreation Association

- Provides co-ed quickball teams.
- Provides girls basketball and softball programs.
- Provides boys baseball and basketball programs.

Knights Cricket Club

- Currently only plays in men's cricket leagues.
- Supports youth co-ed cricket programs held by BOCC cricket club.

Lower Providence Warriors

- Provides co-ed football and cheer programs.

Methacton Warriors Youth Association

- Provides co-ed flag & tackle football programs, as well as cheer programs.

*Methacton School District
2020-2021 Male & Female
Sports Opportunities and
Participation.*

The charts to the right reflect 2020-2021 enrollment by sport and gender for Methacton School District spring, fall and winter sports.

The bullets below delineate sports offered each season for males and females. Highlighted programs are co-ed, in which boys and girls are both welcome to tryout for the team.

Spring Sports	
Baseball	
Varsity & Junior Varsity	35
Ninth Grade	15
Middle School	30
Boys' Lacrosse	
Varsity & Junior Varsity	40
Middle School	30
Girls' Lacrosse	
Varsity & Junior Varsity	35
Ninth Grade	15
Middle School	35
Softball	
Varsity & Junior Varsity	35
Ninth Grade	15
Middle School	25
Boys' Tennis	
Varsity & Junior Varsity	25
Middle School	30
Boys' Track and Field	
Varsity & Junior Varsity	60
Middle School	75
Girls' Track and Field	
Varsity & Junior Varsity	65
Middle School	75

Fall Sports	
Football	
Varsity and Junior Varsity	50
Ninth Grade	30
Middle School	35
Cheerleading	
Varsity and Junior Varsity	30
Middle School	15
Boys' Cross-Country	
Varsity & Junior Varsity	30
Middle School	40
Girls' Cross-Country	
Varsity and Junior Varsity	25
Middle School	35
Field Hockey	
Varsity and Junior Varsity	35
Ninth Grade	16
Middle School	35
Golf	
Varsity and Junior Varsity	25
Boys' Soccer	
Varsity and Junior Varsity	35
Middle School	40
Girls' Soccer	
Varsity and Junior Varsity	35
Middle School	40
Girls' Tennis	
Varsity and Junior Varsity	25
Middle School	30
Girls' Volleyball	
Varsity and Junior Varsity	25

Fall:

MALE	FEMALE
<ul style="list-style-type: none"> Football Junior Varsity Football Freshman Football Soccer Junior Varsity Soccer Cheerleading (Co-Ed) Cross-Country Golf Junior Varsity Golf 	<ul style="list-style-type: none"> Field Hockey JV Field Hockey Freshman Field Hockey Tennis Junior Varsity Tennis Cross Country Volleyball JV Volleyball Cheerleading (Co-Ed) JV Cheerleading Soccer JV Soccer Golf

Winter:

MALE	Female
<ul style="list-style-type: none"> Basketball Junior Varsity Basketball Freshman Basketball Swimming and Diving Wrestling Junior Varsity Wrestling Indoor Track Cheerleading (Co-Ed) 	<ul style="list-style-type: none"> Basketball Junior Varsity Basketball Freshman Basketball Swimming and Diving Cheerleading (Co-Ed) JV Cheerleading Indoor Track

Spring:

MALE	Female
<ul style="list-style-type: none"> Baseball Junior Varsity Baseball Freshman Baseball Track & Field Varsity Lacrosse Junior Varsity Lacrosse Tennis Junior Varsity Tennis 	<ul style="list-style-type: none"> Softball Junior Varsity Softball Freshman Softball Track & Field Lacrosse Junior Varsity Lacrosse Freshman Lacrosse

Winter Sports	
Boys' Basketball	
Varsity and Junior Varsity	20
Ninth Grade	15
Middle School	25
Girls' Basketball	
Varsity and Junior Varsity	20
Ninth Grade	10
Middle School	20
Boys' Indoor Track	
Varsity and Junior Varsity	40
Girls' Indoor Track	
Varsity and Junior Varsity	40
Boys' Swimming and Diving	
Varsity and Junior Varsity	20
Girls' Swimming and Diving	
Varsity and Junior Varsity	20
Wrestling	
Varsity and Junior Varsity	25
Middle School	20

Maintenance

Township Maintenance and Responsibilities

Lower Providence utilizes the Public Works Department which has three staff dedicated to parks maintenance. The Township performs most park maintenance and the Department organizes the work schedules, in partnership with the Director of Parks and Recreation to accomplish maintenance within the Township. Maintenance efforts include full time, part time, and contracted workers to fulfill maintenance needs.

The maintenance department functions at a high level. Equipment care, vehicle maintenance, record keeping, and community response to needs all function well within the Township. Workers perform many of the tasks required for success. Contracted services assist to provide high level maintenance for all Township property. The maintenance staff performs several maintenance tasks that other communities outsource such as aerating, over seeding, fertilization, tree care, etc. Some typical examples of contracted services include: basin care, large tree removal, concrete work, and other tasks that cannot be performed in-house due to resources, work-hours, equipment needs, or technical skill.

A thorough review of the local parks in Lower Providence was conducted over weekdays and weekends during the summer, fall and spring seasons 2020/21. The review evaluated current conditions, maintenance practices, possible future uses, recreational program opportunities, and a risk analysis of each location. All comments for maintenance and accessibility are derived from information provided by the Consumer Product Safety Commission (CPSC) Guidelines for playground safety and from the American with Disabilities Act handbooks. The CPSC guidelines are guideline and not laws; however, courts have held that failure to comply with the guidelines usually results in a judgment for the plaintiff. The ADA regulations are law and must be followed.



Photo: MARA Fields



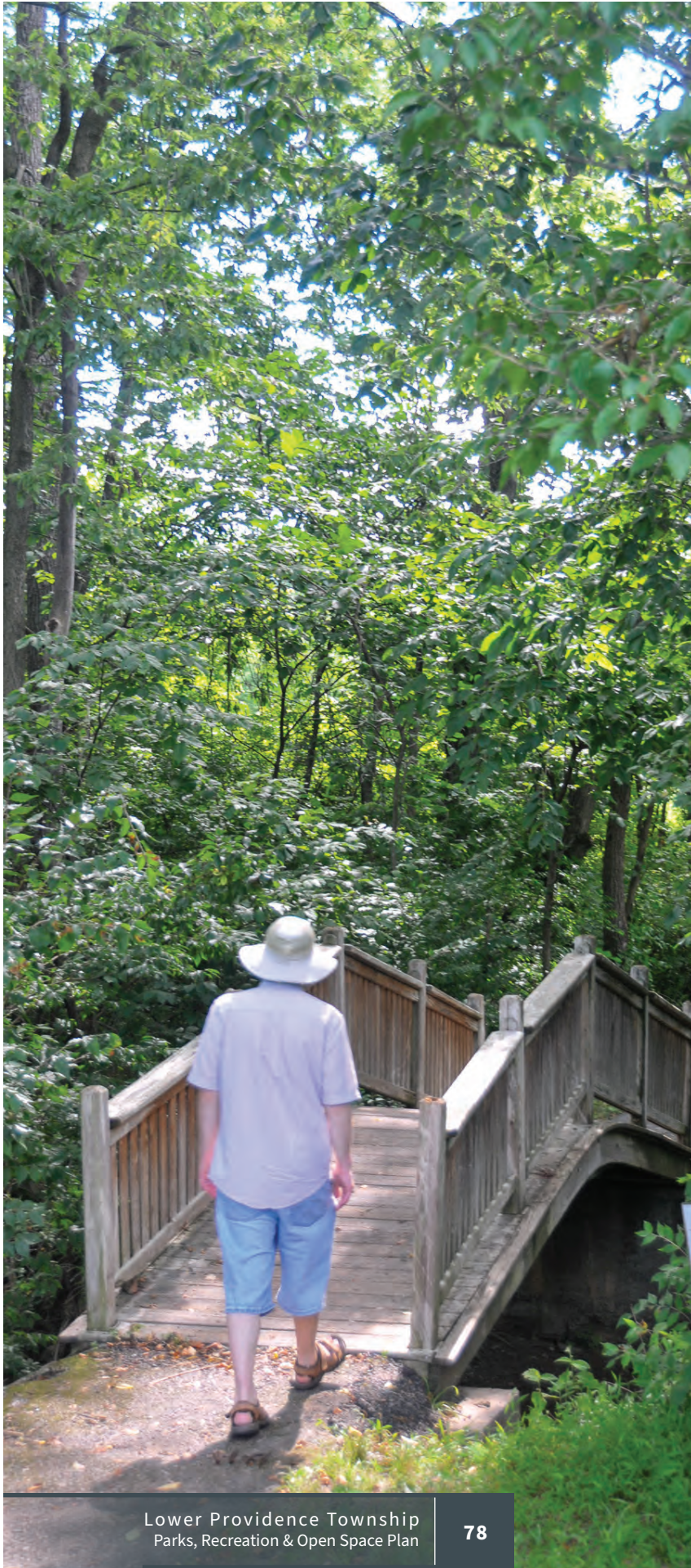
Photo: MARA Fields

In every visit, parks and other Township property maintenance has been excellent. Trash, safety surfaces, downed branches, lawn care - all received passing evaluations. Staff takes pride in their efforts to provide safe, usable, and visually pleasing parks. Informative signage, sightlines, field playing conditions, hardcourt surfaces all meet the guidelines and requirements and received passing evaluations.

A review of the tasks performed and the work-hours necessary to complete the assignments reveals additional seasonal employees, dedicated to park maintenance and directly reporting to the Parks and Recreation Director, would increase the work output and provide some direct control over daily maintenance to the Parks and Recreation Director. Adding seasonal employees would increase the maintenance output while not presenting a financial hardship to the Township. Park maintenance operations perform the necessary work to provide safe and clean parks. However, the extra care necessary to meet the needs of the community, as reflected through surveys and interviews would help to upgrade current sports fields and open space areas.

Lower Providence offers continued learning opportunities for staff members. Training seminars, workshops, and conferences afford staff the opportunity to learn, observe, and share knowledge with other professionals and industry leaders; and, in turn, those who attend the training sessions share information learned with other staff members and the public. Seminars provide new information concerning storm water management and other environmental issues. Additionally, workshops offer employees to be well informed on current best management practices facing the community. Opportunities also provided information related to human resource materials, anti harassment efforts, and safe work environment concerns.

Lower Providence encourages and provides the opportunity for staff to attend a variety of professional seminars, workshops, and knowledge-based programs in a continued effort to support the workforce and to provide them with tools necessary to be successful.



Equipment

The care and maintenance of all equipment is a high priority for the community. The high level of service to equipment extends the life of the equipment and helps keep budgetary concerns lower. The maintenance department and the Parks and Recreation Director routinely inspect playgrounds for dangerous conditions and prepares work orders to alleviate any dangerous issues and other park related work.

Risk Management

Written policies exist for equipment and Township policies are available and reviewed to assist staff. An in-house safety committee meets regularly to review issues and to discuss new trends for the safety of workers and the community. Proper park signage is installed to make all patrons aware of proper playground use and other park rules and regulations.

Adequacy of Maintenance

Current maintenance practices are performed at a high level. The concern will be moving forward as new parks and open space facilities or additional facilities within the current park system are brought on-line. All staff are currently utilized to their full ability that maximizes staff efficiency. As new parks are developed or additions are made to current parks, staff will have substantial time constraints to maintain current high levels of maintenance. A review of staffing levels should be undertaken if, and when, new parks and park amenities are developed. The National Park and Recreation Association has level of service standards which outline benchmarks for number of parks, park acreage and staffing levels.

Recreation Programming Analysis

The Township provides scores of recreational programs for residents and non-residents alike. Passive opportunities for spontaneous recreation pursuits abound within the Township. Limited opportunities for organized recreation programs exist, due to a lack of indoor facilities. The addition of indoor facilities or new and expanded partnerships for indoor facility use offer Lower providence opportunities to provide year round recreational programming. The current staff has the capacity and is capable to provide additional year round programs. With the abilities of the current staff, increasing to year round

programming will not increase staff costs to provide such services. Increased costs will be realized in possible partnership agreements, equipment, instructor payments, all of which are recovered through program registration fees. The residents are being underserved during the late fall, winter, and early spring seasons when it relates to recreation programs offered by the Township.

Opportunities are plentiful for Lower Providence to provide some simple programs which will serve residents. The programs may take the form of employee instructors, third party providers, and partnerships with private organizations.

The Township regularly interacts with the residents concerning programs wanted, program evaluations, and to glean other information. This is accomplished through program participation, surveys, and social media opportunities. At present, the results from the recently completed survey and remarks provided from public meetings indicate that the residents of the Township do feel recreational programs are important and are desired in the Township. The recent public survey will provide information for the immediate future; however, additional and ongoing information needs to be obtained from the public to address the changing needs of the community.

The Township must evaluate the needs and wants of the community as compared to the budgetary constraints. The Township may wish to review the DCNR model, financing municipal recreation and parks, as a guide for determining program fees and sponsorships.

Administration Analysis

Administrative Analysis of Providers and Relationships

The Parks and Recreation administrative offices serve as the central contact point for the residents, sport groups, community events, and other community groups of Lower Providence. The Administration accepts facility reservations, provides programming administration, partners with the Public Works Department to provide park work orders, handles the daily activities of the Township, and responds to requests from community members.



While reviewing the current formal partnerships related to recreational opportunities, we found few partnerships. Limited partnerships have shown success; however, few recreational programs are offered by the Township or community groups during the cooler or colder months due to a lack of indoor facilities. The creation of written procedures would outline who is responsible for what and how future programs would be advertised, held, and evaluated. Lower Providence Township has a wonderful partnership with the school district for summer programs and that partnership should be revisited to determine if the Township can gain access during the cooler months of the year to provide additional organized recreational opportunities.

Some cooperative verbal partnerships exist to assist the Township; youth sport organizations, and civic organizations. Partnerships are essential to the success of the Lower Providence Township. Enhanced written partnerships with the school district and other recreational providers will benefit the community and allow the Township to offer several new programs to meet community requests. Additionally, the partnership will outline each parties responsibility and any fees associated with the partnership.

Marketing Efforts

The current level of public relations and marketing efforts the Township performs to promote services is adequate. The Township utilizes their website, Facebook, flyers, brochures, newsletters, newspapers, posters and signage, and other means to promote the Township recreational facilities and programs. These public relation efforts are placed throughout Township owned facilities, in some local businesses, posted on signs, promoted via social media, and are available at other community outlets.

A goal of this plan and the department is to increase program participation in two ways: encourage participation from those not currently enrolled in programs; and, to increase participation from those already enrolled. This is difficult since the Township provides programming primarily during the warmer weather months. By providing for additional indoor facilities, an increase in both of these goals can be realized. This will also increase the program revenue stream which helps offset the costs of providing a recreation department.





Photo: MARA Fields

Policies for Parks and Recreation Operation

The Township does provide program information and policies and procedure for reservations of park amenities to the community, as well as other community events. Policies and available information include pavilion rentals, ballfield reservations, and other park amenities within Lower Providence, as well as all the program offerings, including special events. The procedures and policies that govern the use of those facilities are readily available for residents and outline the procedure for registration, rentals, and other park use. The policies should be reviewed and updated as to the process for reservations and fees for rentals and programs.

Other policies should be reviewed to determine if the fees being charged are appropriate for program participation, field uses, and pavilion reservations. Additionally, some of the policies do not provide for facility use priorities. For instance, perhaps fields are provided to resident youth sports first, then resident teen activities, then resident adults use, followed by non-resident groups (if permitted). These written policies will assist administrative offices in making decisions when multiple requests are made for a particular field and will provide a standard to follow in explaining why a group received a field or not.

Record Keeping

The current practice of record keeping for park maintenance, when issues are called in from residents, is adequate and is easily tracked. Work orders are prepared and forwarded to the Public Works Director for action. Once completed, the maintenance records and executed work order is retained by the Township. After the completion of the work task, the Township does reply to the person logging the comment to ensure the requested work was performed adequately.

Since not all work tasks are prepared via a work order, daily park maintenance is not recorded in an easily retrievable manner. Improvements can be made to the daily tracking of park maintenance activities. The current practice appears to be informal. The Public Works Director or Parks and Recreation Director keeps the daily activity sheets of work performed, with little technology tracking assistance. The tracking of work performed may improve work scheduling, task assignments, and daily results.



Financing and Funding

All recreation and park maintenance activities, including payroll, are funded through the Townships General Fund Budget. Revenues which are received are derived from program participation, special event sponsorships, and facility rentals or facility use fees (such as pavilion and field rentals). Other revenue streams can be created with the addition of recreational programs for people of all ages and abilities.

Some recommendations in the report will not generate revenues associated with the various recommendations and each will need to be evaluated to determine if the existing general budget can accommodate the recommendations. Other recommendations may require capital investments to provide for the recommended improvements. And, additional recommendations will general a small revenue stream which may help to offset the recommendation.

Various funding sources are available to fund capital improvement recommendations and are outlined within the report (chapter 4). Recent capital funding for park improvements has been successful and continued support of the capital improvement fund is necessary to maintain the high level of service currently provided. Opportunities to utilize capital improvement funds as leverage for matching grants can provide for 50% to 80% of the capital cost of the improvements to be made using grant funding. However, applicable grants are competitive and the grant must be well prepared in order to achieve funding approval. The Department of Conservation and Natural Resources is one funding source which provides recreation funding for open space, park improvements, and other recreational opportunities. While each capital improvement recommendation will benefit the Township in general, singular improvements are not generally favorably received by DCNR for recreational improvements. DCNR would rather see a holistic approach to recreation when determining which projects to fund. In this case, it may be best to review all recreational opportunities at a location in order to leverage the best possible opportunity for funding. As an example, DCNR is not likely to fund sport field irrigation. The Township may take a position that the irrigation will be part of an overall improvement for a specific park which may include, handicap accessibility, stormwater management issues, a play area, among other improvements. While the improvements will still present a cost to the Township, the Township would be in a position to leverage their capital funds for additional improvements by receiving matching grant funding.



Photo: Eskie Park

