



# Parks, Recreation & Open Space Plan

## Committee Meeting 5 – March 25, 2021





# Agenda

- Introductions
- Project Scope & Schedule
- Project Goals & Objectives
- Relevant Planning Documents – Relevant Goals
- Updated Survey & Wikimapping Results
- Key Person Interview & Focus Group Update
- Township Recreation Facilities Analysis
- Conceptual Open Space Acquisitions & Recommended Partnerships
- Multimodal Connections
- Maintenance and Programming
- Stormwater and MS-4
- Draft Plan
- Discussion
- Next Steps





# Open Space Committee

- Colleen Eckman - Supervisor
- Jean Akers - Chair for Open Space Committee and member of Park Board Committee
- Susan LaPenta – Township Planning Commission
- Bill Brooke – Township Planning Commission
- Erin DiPaolo - Township Park Board Committee
- Beth Ann Mazza – Township Park Board Committee
- Katherine McGrath- Township Park Board Committee – Student Representative
- Jane Delaney – Parks and Recreation Director
- Donald Delamater- Township Manager





# Project Scope

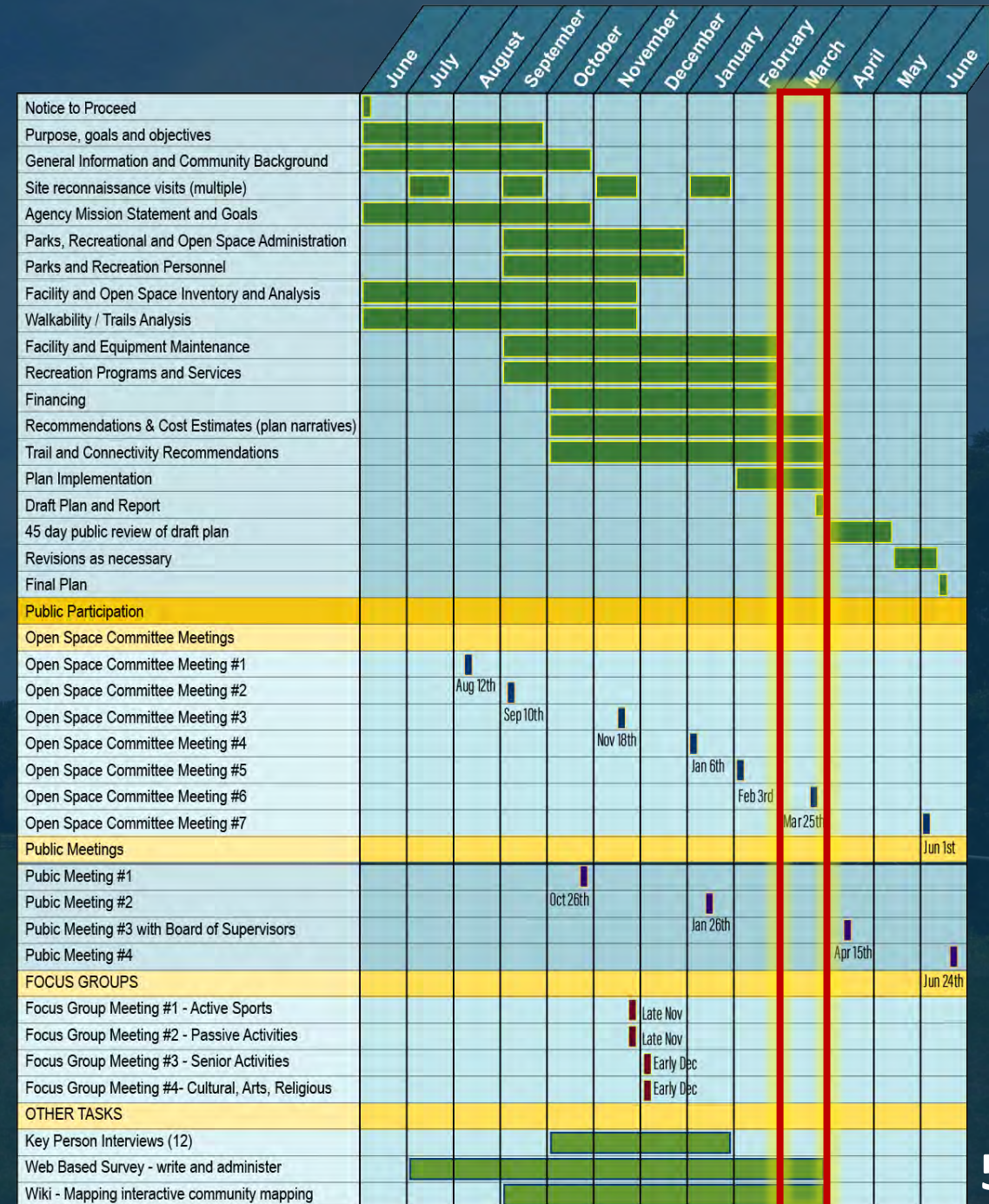
- Existing conditions inventory and data collection
- Activities and facilities analysis
- Site reconnaissance
- Public participation
  - 4 committee meetings
  - 4 public meetings
  - Key persons interview
  - Public opinion survey
- Vision goals and objectives
- Report with recommendations for open space, recreational facilities and programming, and multi-modal and greenway connections
- Implementation strategies
- Regulations, management, planning and financing





# Project Schedule

	Meeting Title	Meeting Date
<b>2020</b>	Open Space Committee Meeting #1	Wednesday, August 12th
	Open Space Committee Meeting #2	Thursday, Sept 10
	Public Meeting #1	Monday, October 26
	Open Space Committee Meeting #3	Wednesday, November 18
	Focus Group Meeting #1 - Active Sports	Late November
	Focus Group Meeting #2 - Passive Activities	Late November
	Focus Group Meeting #3 - Senior Activities	Early December
	Focus Group Meeting #4- Cultural, Arts, Religious	Early December
<b>2021</b>	Open Space Committee Meeting #4	Wednesday, January 6
	Public Meeting #2	Tuesday, January 26
	Open Space Committee Meeting #5	Wednesday, February 3
	Open Space Committee Meeting #6	Thursday, March 25
	Key Person Interviews (12)	Dates TBD
	Web Based Survey - write and administer	Oct 1 through April 1
	Wiki - Mapping interactive community mapping	Oct 1 through April 1
	Public Meeting #3 with Board of Supervisors	Thursday, April 15
	Open Space Committee Meeting #7	Tuesday June 1
	Public Meeting #4	Thursday, June 24





# Plan Goals

- Create a **sustainable plan** for parks, recreation and open space
- Provide **equitable access** and opportunities to all residents
- Preserve cherished Township characteristics and **valued natural resources**
- Plan for **safe multi-modal connections** between various Township park, recreation, and open space resources





# Plan Objectives

- **Survey** area residents to determine current perceptions and needs regarding park, recreation, and open space facilities and programs in the Township;
- **Conduct** public meetings to gather information, comments, and suggestions from residents, local organizations, and other stakeholders;
- **Inventory** existing parks, recreational facilities, preserved open space, trails, schools, private sector recreation providers and other important recreation destinations within the Township;
- **Compare** the existing inventory of park facilities with other similarly sized communities;
- **Analyze** current active and passive recreational facility use;
- **Suggest** ways to enhance existing and planned trails with additional connections to area recreational, employment, residential, shopping, and other destinations;
- **Recommend** improvements which contribute to social, economic, and environmental sustainability, and;
- **Develop** a phased implementation and funding strategy to make the plan a reality.

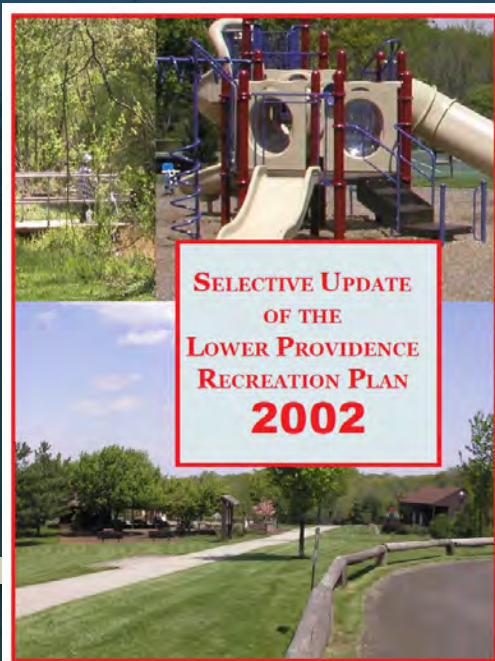




# Relevant Planning Documents

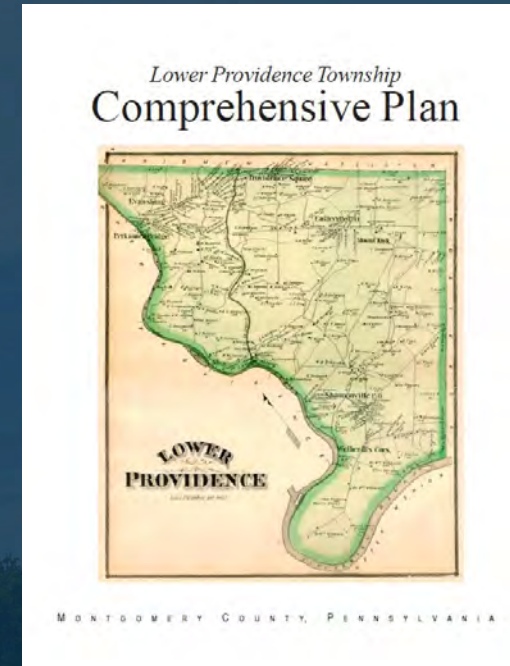
## Selective Update of the Lower Providence Recreation Plan, 2002

- Updated park and recreation inventory and needs
- Five Park Zones of the Township (A through E) are described; park, recreation, and open space resources are inventoried in each Zone.
- Recommendation for 10.5 acres of parkland for every 1,000 residents.



## Lower Providence Township Comprehensive Plan, 2002

- "To maintain livability in the township, parkland suitable for active and passive recreation should be obtained."
- Promote safe, efficient pedestrian and bike trails/sidewalks.
- Enact a riparian buffer ordinance for stream corridor and wetland preservation.
- Adopt stormwater best management practices to promote stream water quality and groundwater recharge.
- Require open space preservation for developments using the Alternative Development Plan in the R-2 District.
- Amend the steep slope ordinance to restrict excessive grading and lower the steep slope classification from a 25 percent grade to a 15 percent grade.





# Relevant Planning Documents

## Lower Providence Township Open Space Preservation Plan 2002 & 2005 Update

### RECOMMENDED OPEN SPACE ACQUISITIONS

*“Therefore, it is recommended that the Township begin to implement the purchase of the below described land by initially concentrating on securing the following sites:*

- St. Gabriel’s [recommendation not yet advanced, still relevant]
- Woodland Avenue Site [recommendation advanced, now Mascaro Field]
- Tyrpin Property [recommendation advanced, purchased by LPT]
- Creation of a New Park in Zone A [recommendation advanced, now Cranberry Park]
  - *“the Township should begin discussion with the Local 380 IBEW Union, Perkiomen Valley Sportsmen Association, Collegeville Inn, and various individuals who own vacant or under utilized land in this area to secure a site for the creation of a parkland that has playing fields”*



# Relevant Planning Documents

## Lower Providence Township Open Space Preservation Plan 2002 & 2005 Update

### HIGH-PRIORITY / SIGNIFICANT OPEN SPACE PARCELS

- *The following areas or parcels have been identified as significant in Lower Providence Township. Those properties greater than ten (10) acres are areas that are recommended to be overlaid with OSR Open Space Residential cluster zoning to ensure that if they are developed that a significant percentage of the site would be preserved as open space.*
- *St. Gabriel's Protectorate. [recommendation still relevant]*
- *Heyser (now Omni) Landscaping Property. [recommendation still relevant]*
- *Eagleville Hospital Open Space [recommendation still relevant]*
- *Pechins Mill Road Area. [recommendation still relevant / IBEW private recreation area]*
- *Arcola Road – Camp Hideaway. [recommendation still relevant]*
- *Lower Providence Rod and Gun Club. [recommendation still relevant]*
- *Park Avenue, between Woodland Avenue and Shannondell. [recommendation still relevant]*



# Relevant Planning Documents

## Lower Providence Township Open Space Preservation Plan 2002 & 2005 Update

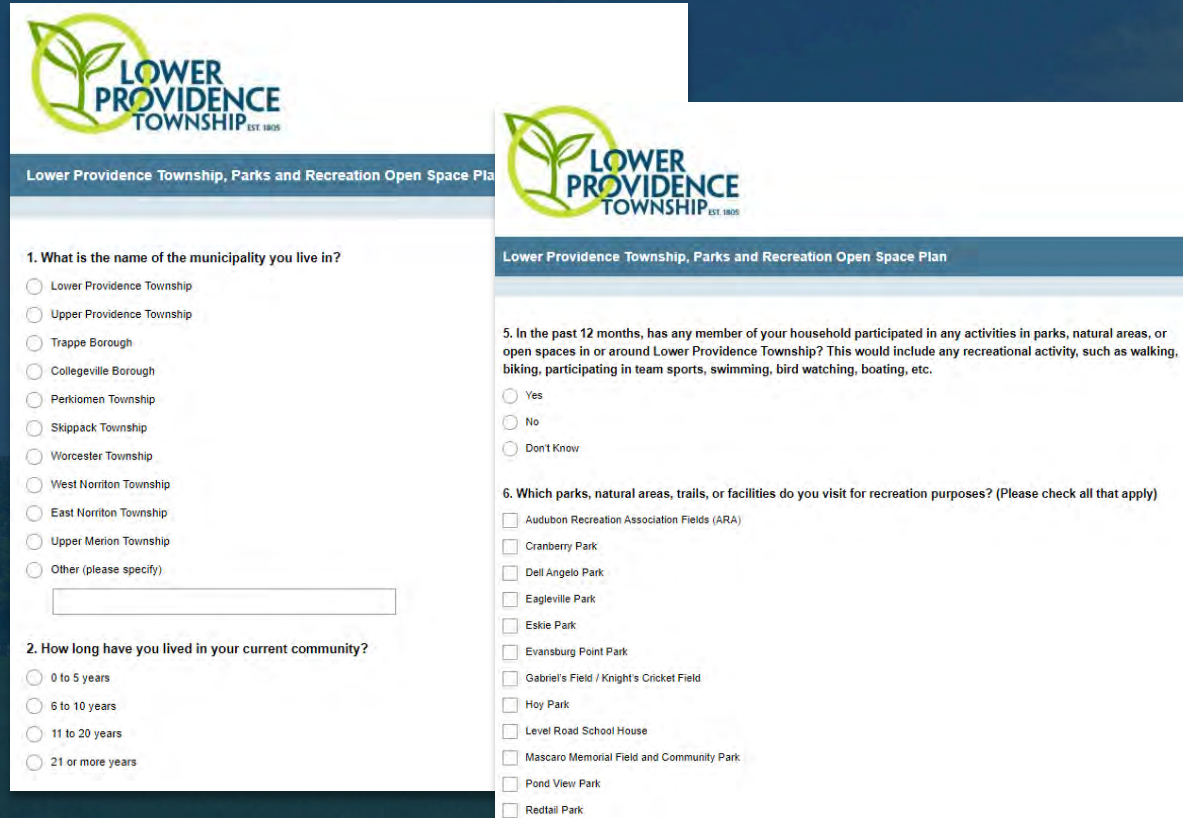
### ADDITIONAL RECOMMENDATIONS

- Indoor Recreation Facility. Notwithstanding the ability to use school facilities, the Township should conduct a feasibility study to see if such a center is warranted or if the school buildings will fulfill the need. **[recommendation still relevant]**
- Official Map. A useful planning tool that delineates on a map land that the Township wishes to purchase for public purposes. **[recommendation still relevant]**
- School District Agreement. The Township should negotiate an agreement with the Methacton School District to secure permanent public access to the District's indoor and outdoor facilities. **[recommendation still relevant /TBC]**



# Public Survey Update

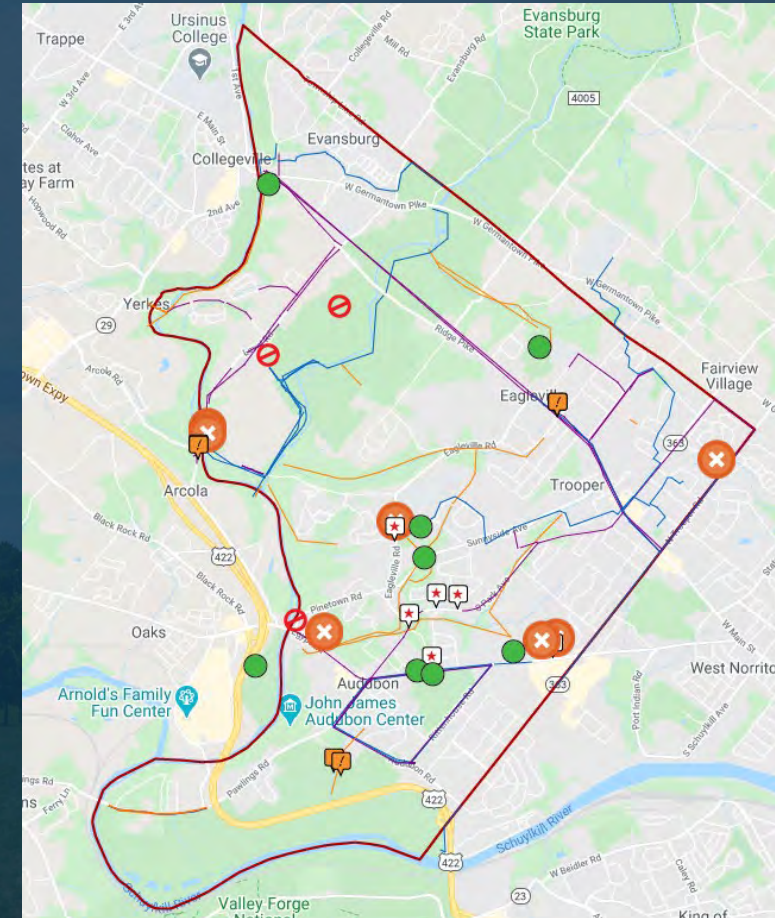
632 completed surveys as of March 25, 2021



The image shows a screenshot of a survey form titled "Lower Providence Township, Parks and Recreation Open Space Plan". The form includes the township's logo and several questions. Question 1 asks for the municipality of residence, with radio button options for Lower Providence Township, Upper Providence Township, Trappe Borough, Collegeville Borough, Perkiomen Township, Skippack Township, Worcester Township, West Norriton Township, East Norriton Township, Upper Merion Township, and an "Other" field. Question 2 asks for the length of time lived in the current community, with radio button options for 0 to 5 years, 6 to 10 years, 11 to 20 years, and 21 or more years. Question 5 asks if any household member participated in park activities in the last 12 months, with radio button options for Yes, No, and Don't Know. Question 6 asks which parks or facilities are visited, with checkboxes for Audubon Recreation Association Fields (ARA), Cranberry Park, Dell Angelo Park, Eagleville Park, Eskie Park, Evansburg Point Park, Gabriel's Field / Knight's Cricket Field, Hoy Park, Level Road School House, Mascaro Memorial Field and Community Park, Pond View Park, and Redtail Park.

# WikiMapping Update

101 WikiMap comments made as of March 25, 2021



<https://www.surveymonkey.com/r/LowerProvidenceParks>



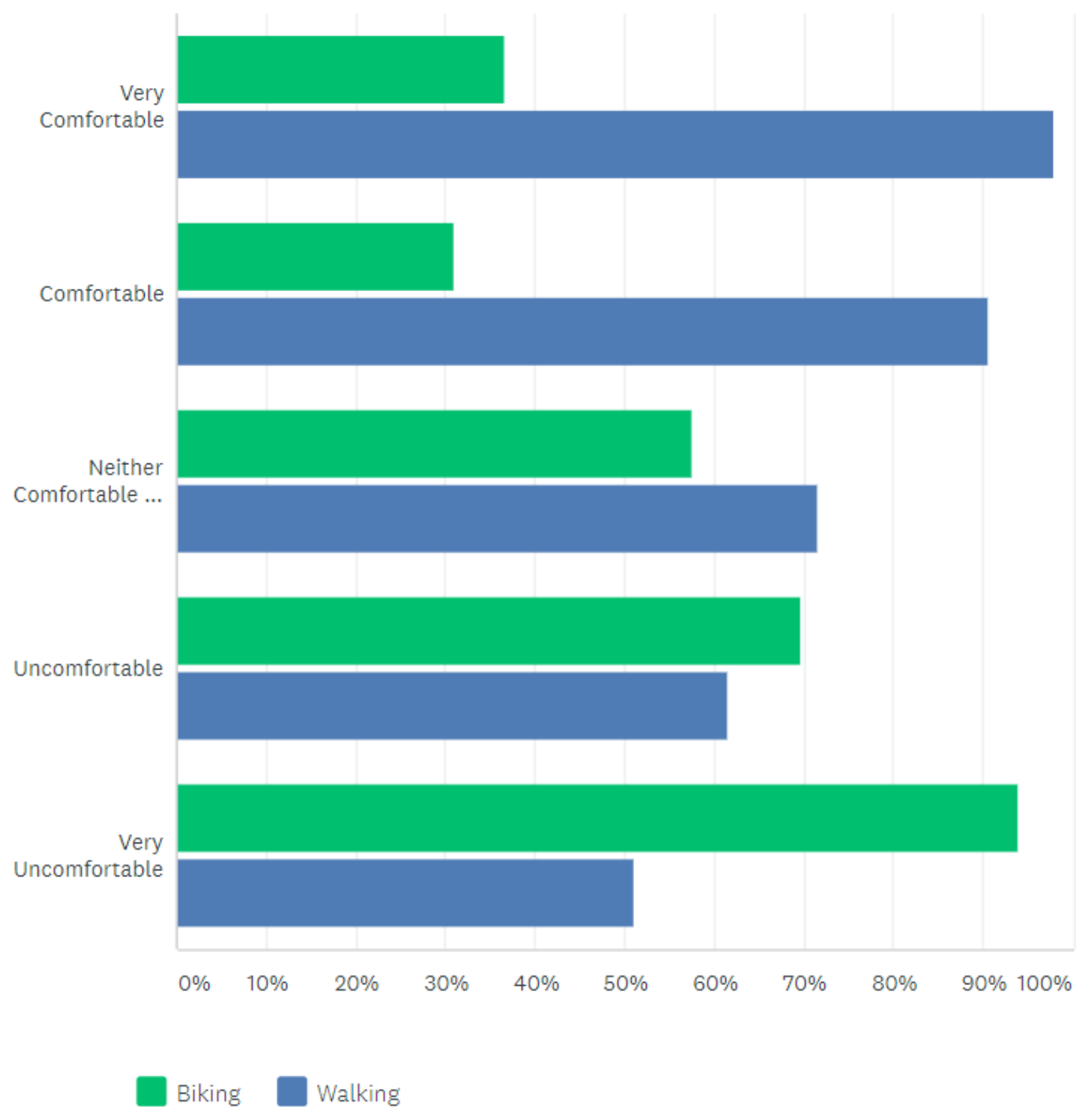
# Public Survey Update

- 91% live in Lower Providence
- 42% of those in Lower Providence have lived in the Borough for 21+ years
- 53% of all respondents are between the ages of 45-64
- Most respondent households have 2 members
- 94% of these households had members who participated in recreation in parks, natural areas, or open spaces in/around Lower Providence in the last year
- 91% walk, run or bike on area trails or roadways
- 92% of respondents drive to area parks; 81% feel that there are an adequate number of parks, natural areas and trails available to them or in close proximity to where they live
- 57% do not visit gyms or workout centers for fitness or recreation



# Public Survey Update

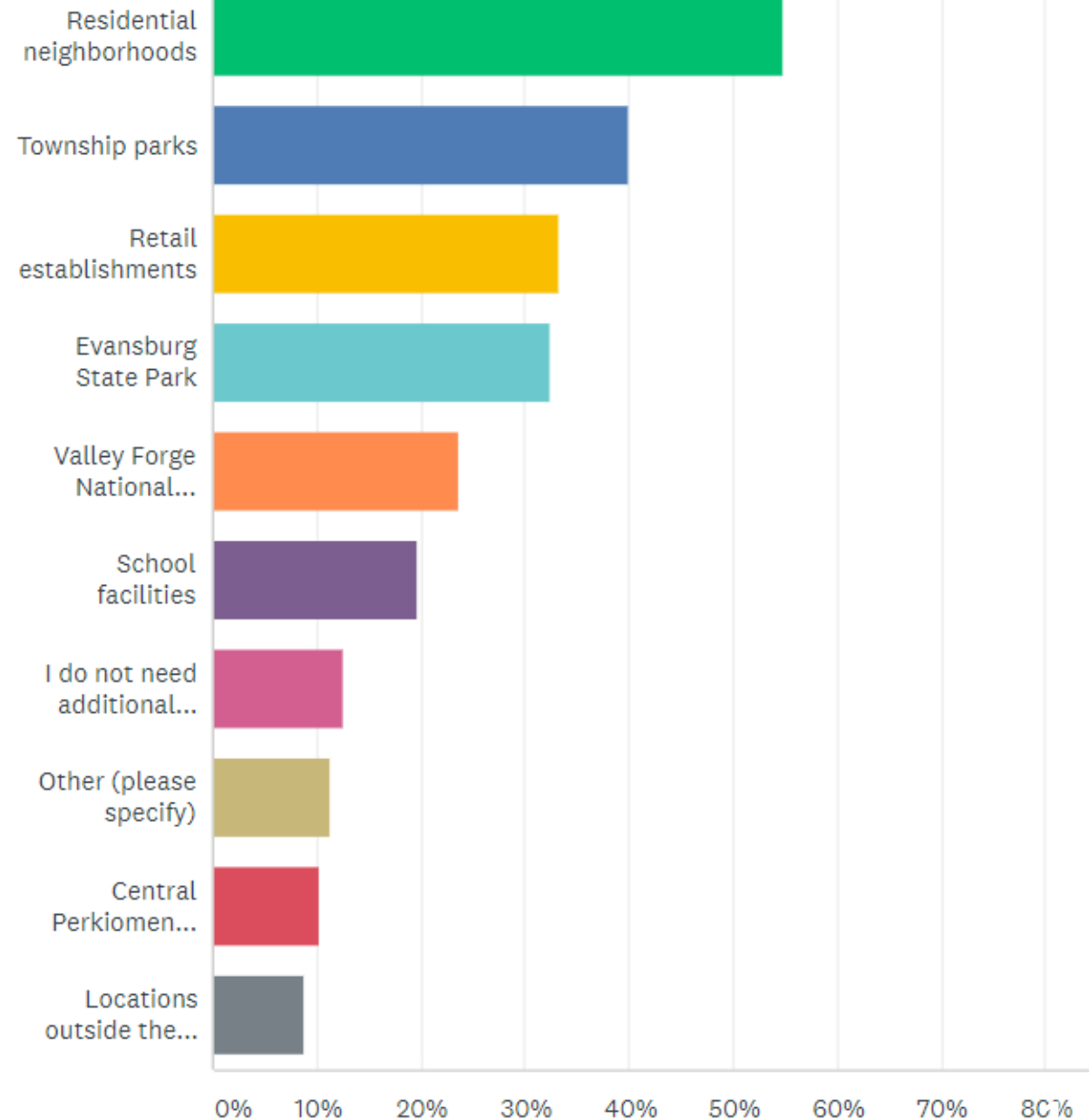
*How comfortable do you feel  
biking or walking in Lower Providence?*





# Public Survey Update

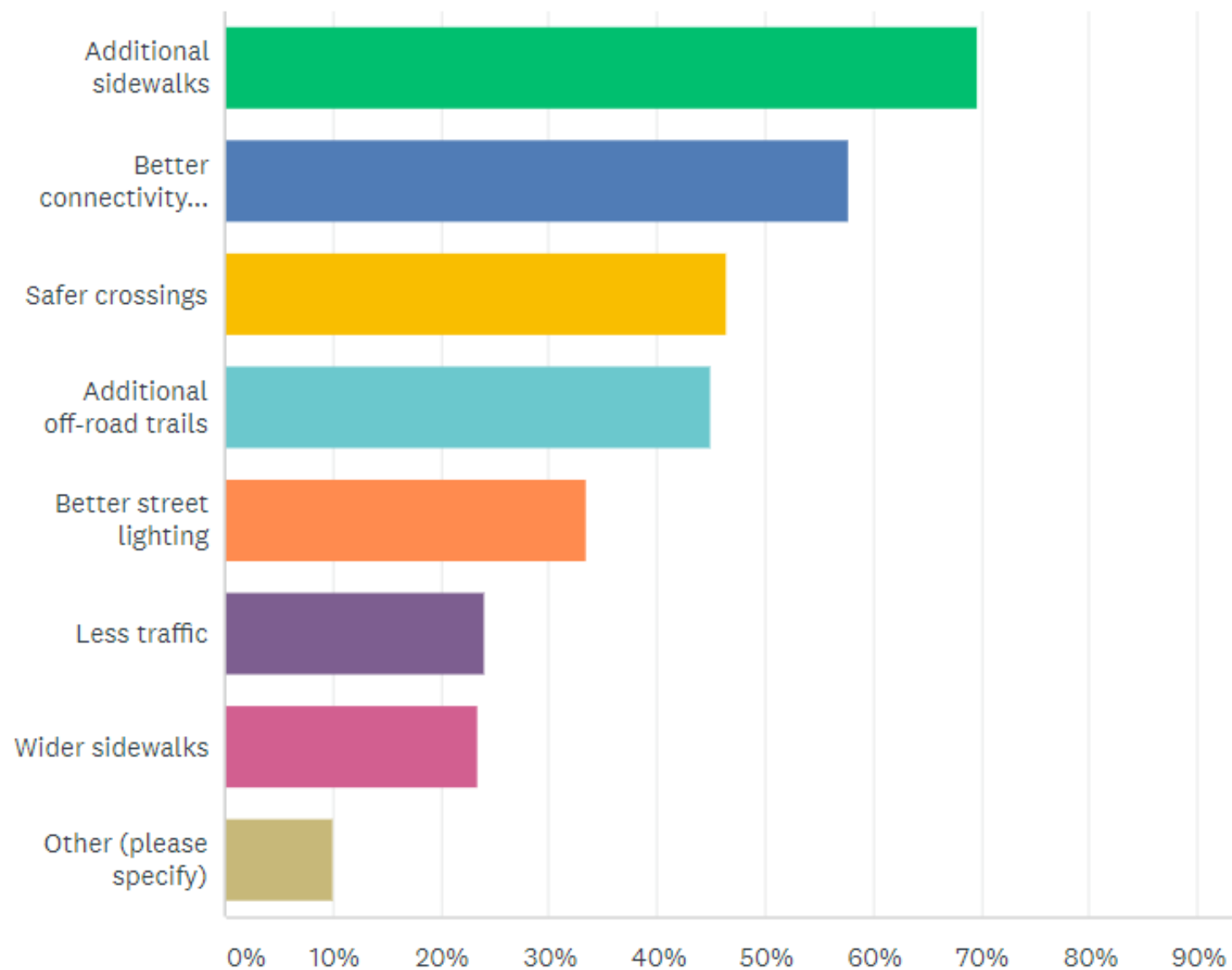
*To what areas would you like improved pedestrian and bicycling access?*





# Public Survey Update

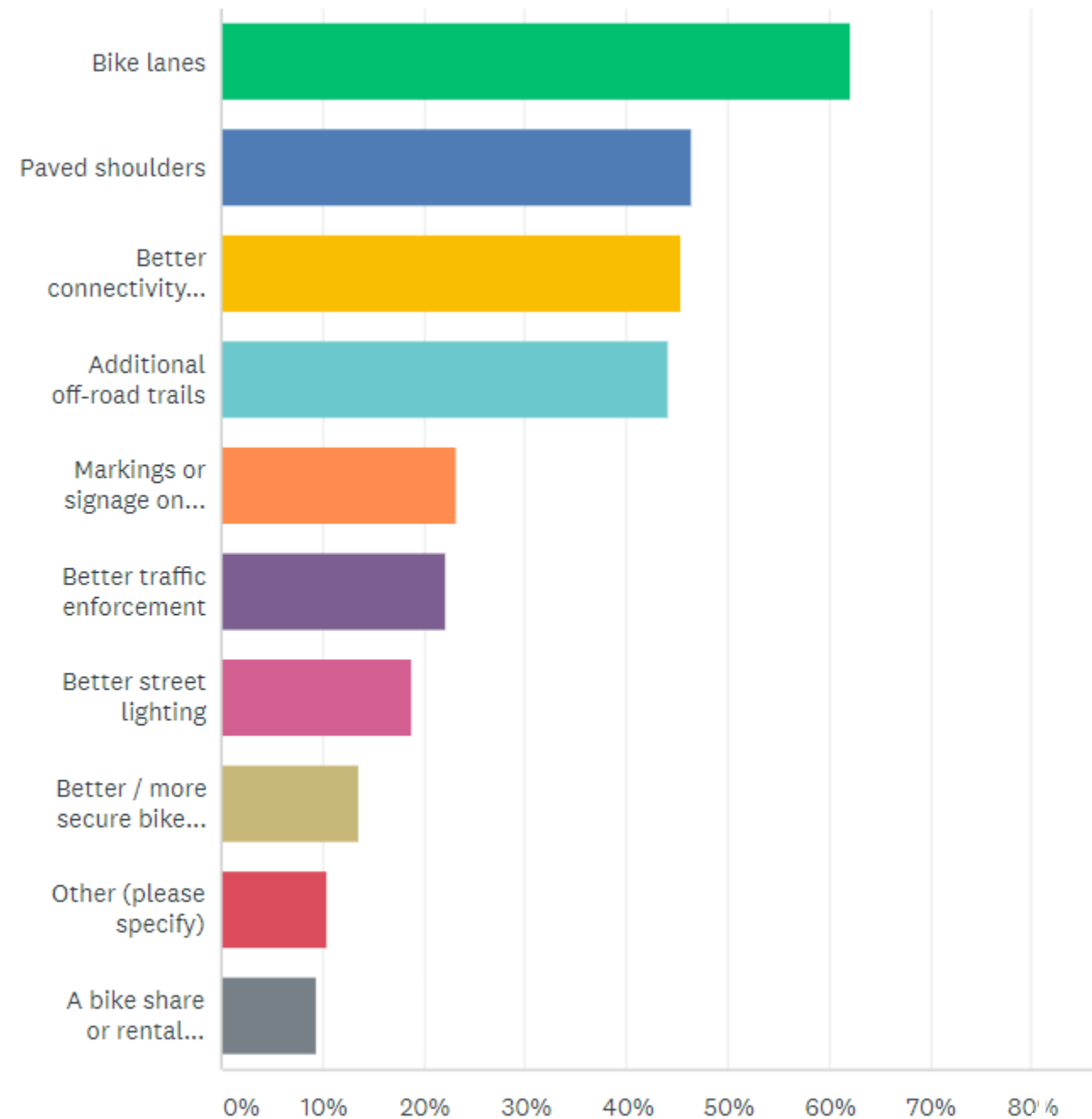
*What would encourage you to walk more?*





# Public Survey Update

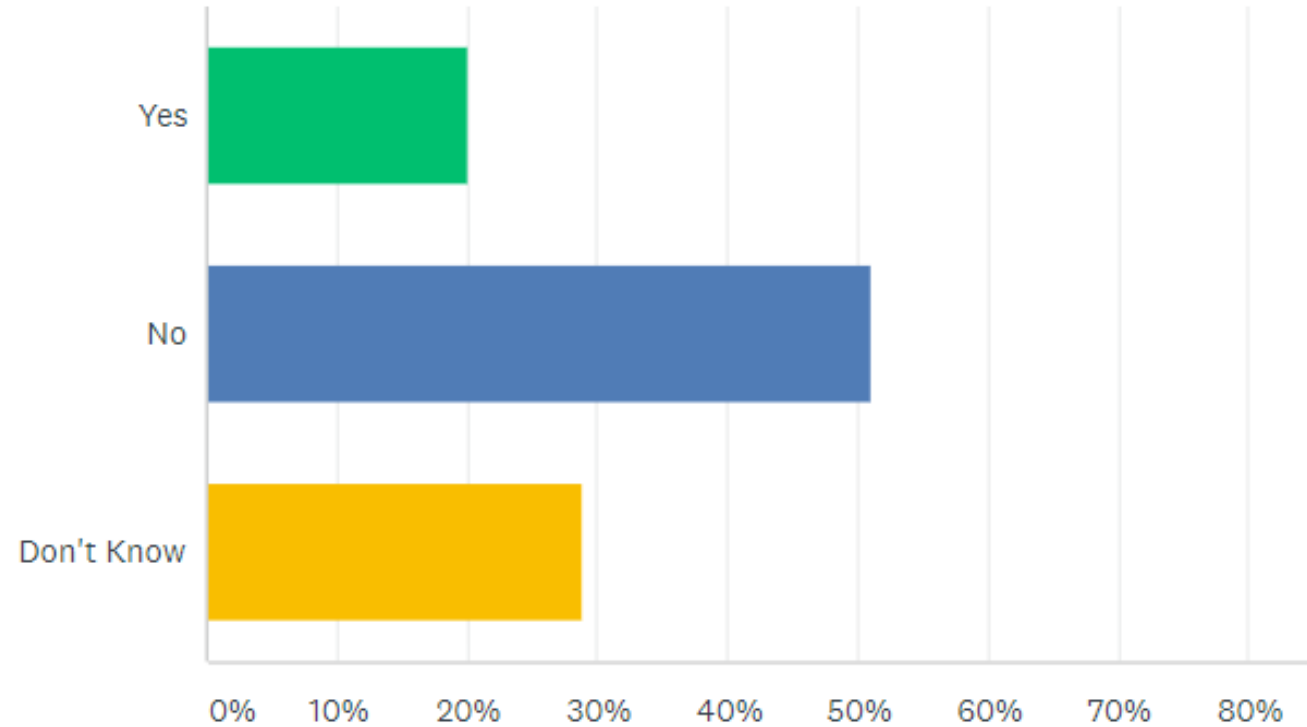
*What would encourage you to bike more?*





# Public Survey Update

*Do you think Lower Providence needs more sports fields?*

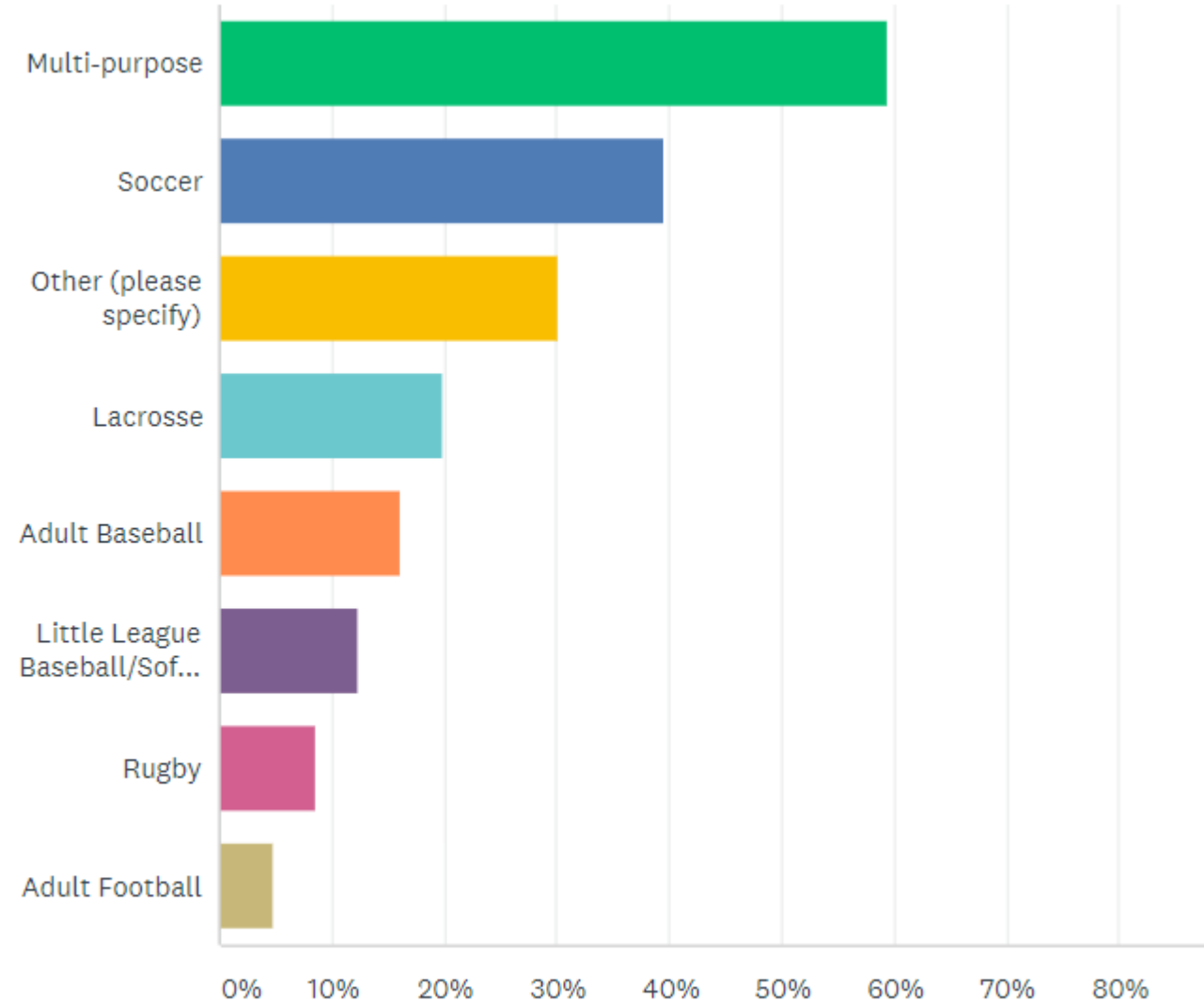




# Public Survey Update

*If you answered yes to the previous question, which sports do you feel are in need of fields?*

*Other includes: field hockey, dog park, skate park, turf field, pickleball, volleyball, tennis courts, basketball*





# Public Survey Update

*Top 5 priorities that Lower Providence should focus on:*

1. Open Space and Natural Resources Preservation: 42%
2. Pedestrian Connections: 40%
3. Trails: 31%
4. Bike Lanes: 28%
5. Improvements to Existing Facilities: 22%



# Key Person Interview & Focus Group Update

## Completed Key Person Interviews

### Lower Providence Board of Supervisors (x5)- Key Takeaway(s):

- Support for Evansburg connection / Perkiomen Crossing.
- Consider future DCNR/ Evansburg partnership for additional ballfields.
- Consider open space acquisition connecting Dell Angelo Park to Ridge Pike.
- Consider open space acquisition of open area across from Eagleville Park.
- Safe on-road bicycle connections to parks are essential.
- Important to engage all diverse members of the Lower Providence community.
- Skippack Creek Watershed Alliance an important organization. Lower Providence one of 7 participating municipalities reducing sediment loading into Skippack.

### Valley Forge / National Park Service - Key Takeaway(s):

- Open to trail development in Valley Forge parcel north of 422. Further discussion needed.
- There is need for additional river access, potentially at Pawlings Road parking area.

### Montgomery County - Key Takeaway(s):

- County-owned open space to remain passive. Not in favor of active recreation on County-owned land.
- County supportive of Evansburg connection / Perkiomen crossing.

### Perkiomen Valley Watershed - Key Takeaway(s):

- Supportive of the following trail: conceptual Central Perkiomen trail, Evansburg connection / Perkiomen crossing, Valley Forge connector.

### John James Audubon Center -Key Takeaway(s):

- Meadows & birding habitat should be a Township priority in areas that can be converted from mown lawn.
- Consider ADA accessible bird viewing locations.



# Key Person Interview & Focus Group Update

## Active Recreation Focus Group (4 attendees)

### Key Takeaways:

- Improve existing Lower Providence facilities (i.e. fields) before building or adding new facilities.
- Consider converting Eagleville / Evansburg Point Park ballfields to turf.
- Help reduce organization costs and help generate revenue.
- Sports organizations should have quarterly collaborative meetings (discuss joint marketing best Covid safety measures, etc.)

## Passive Recreation, Nature, Trails Focus Group (9 attendees)

### Key Takeaways:

- Evansburg / Hoy Park Perkiomen multi-modal crossing preferred to Yerkes Road bridge crossing.
- Trails should serve recreation and commuter populations.
- Montgomery County wants County-owned open space (ie. Knights Cricket Field) to remain passive and undeveloped.
- Consider sidewalks along Arcola Road from Hoy Park to Perkiomen bridge crossing.



# Key Person Interview & Focus Group Update

## Schools Focus Group (4 attendees)

### Key Takeaways:

- MSD does not promote children walking to school. There are no crossing guards in MSD. (Perceived safety concerns)
- Every school student is assigned a designated bus stop.
- Redtail Park used by student population. Restroom in this location would be beneficial.
- Audubon Elementary School:
  - MSD School Board is discussing future of property and building. No decision made. Likely MSD will keep this land in case a future school is required.

## Social, Community, Seniors Focus Group (9 attendees)

### Key Takeaways:

- There is limited indoor recreation space, more needed for senior population programming.
- St. Gabriel's should be a priority for partial open space acquisition.
- ADA access at all parks is essential.
- Important to get more kids walking to recreation facilities and school.



# Facility Analysis & Recommendations





# Facilities Analysis – Sherwood Park

- Existing Conditions



Existing Conditions Legend  
Parcel Line  
Sidewalk  
Topography (1' Contour)





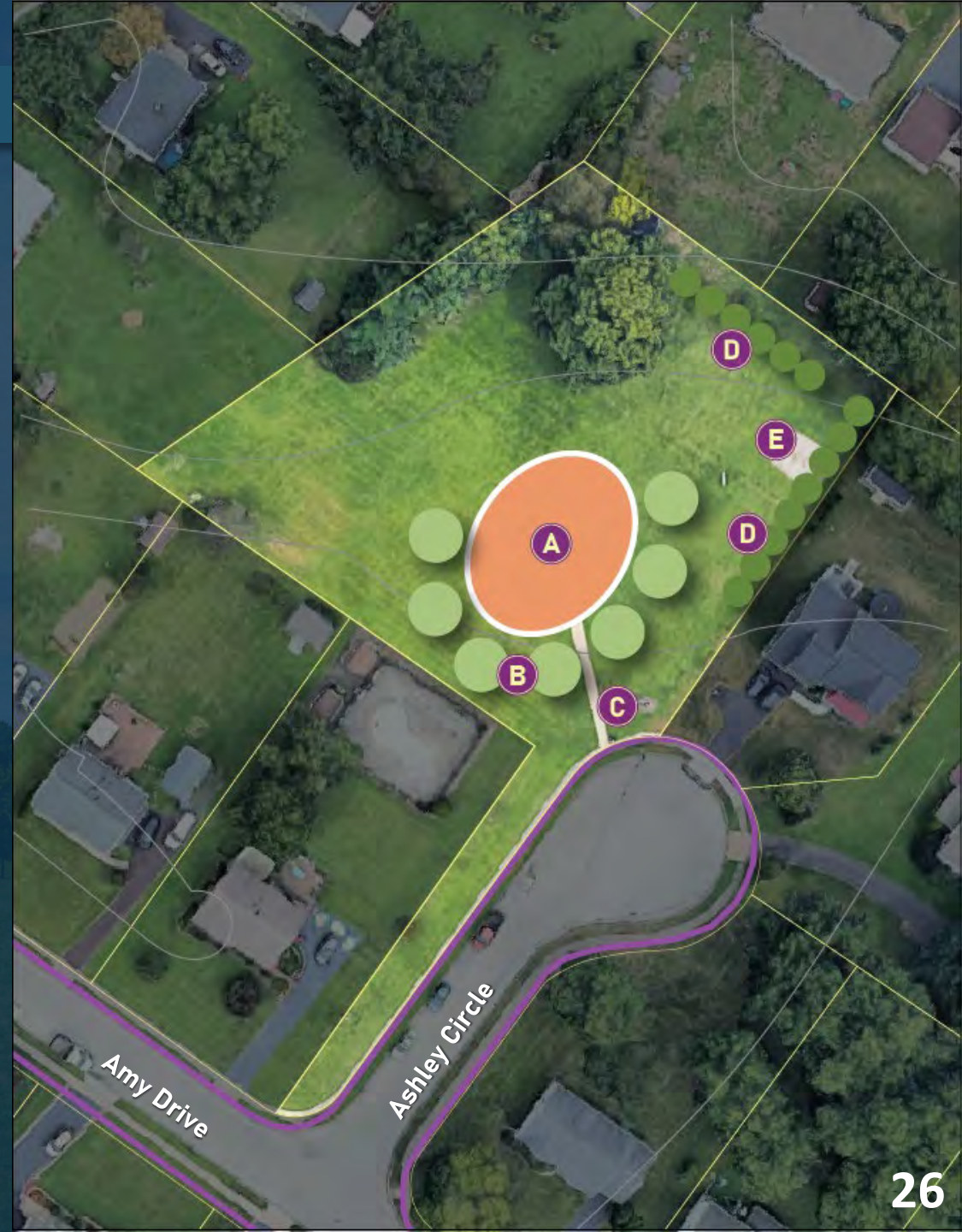
# Facilities Analysis – Sherwood Park

- Conceptual Improvements

- A** Expanded play safety surface, add tot lot. Consolidate with swings from area E.
- B** Plant shade trees and install ADA benches.
- C** Replace stone dust walkway with ADA concrete or asphalt walkway.
- D** Plant vegetated buffer for adjacent residents.
- E** Move swings to area A, include swings for all ages / abilities.

Existing Conditions Legend

- Parcel Line
- Sidewalk
- Topography (1' Contour)





# Facilities Analysis – Pond View Park

- Existing Conditions



Existing Conditions Legend  
Parcel Line  
Sidewalk  
Topography (1' Contour)





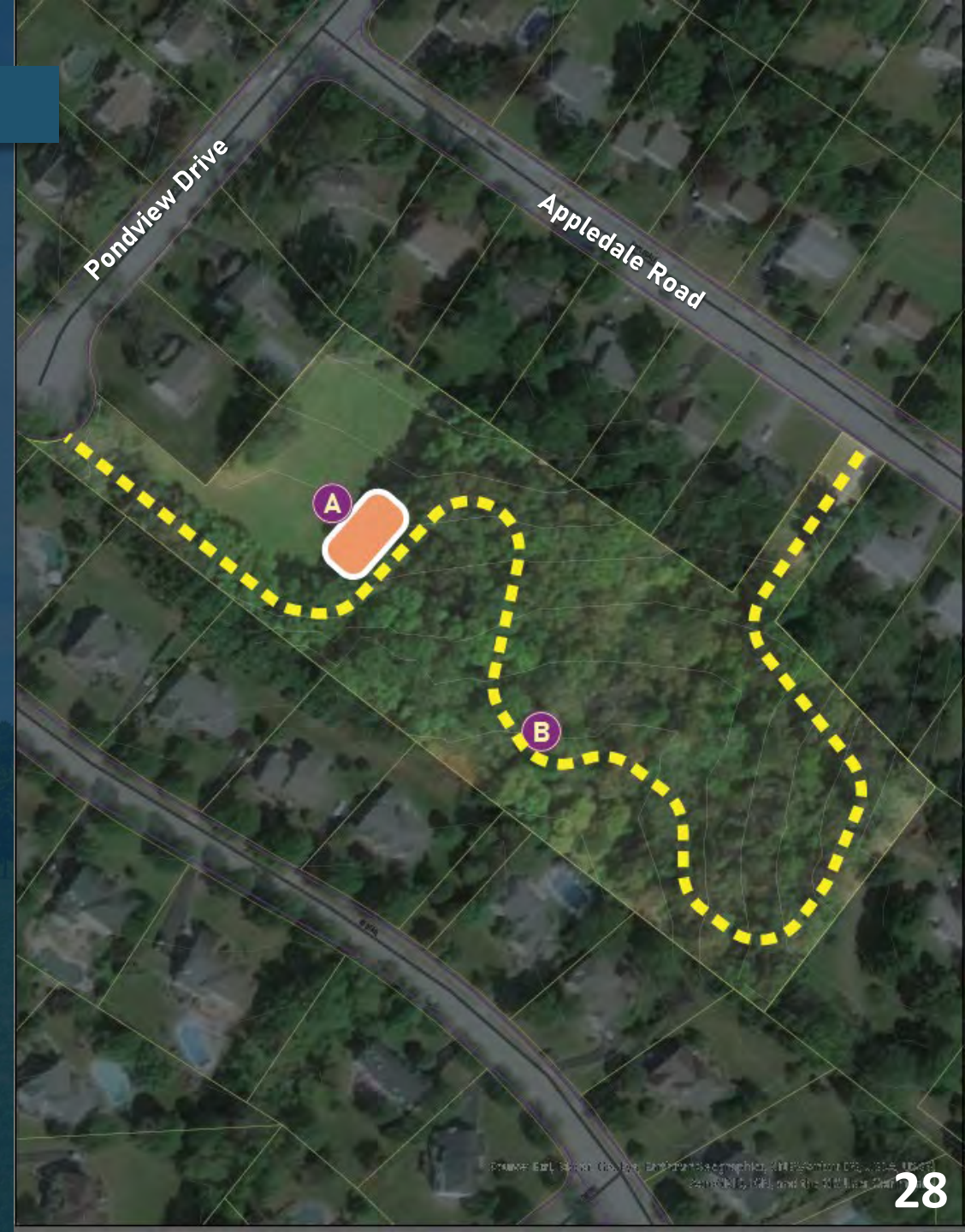
# Facilities Analysis – Pond View Park

- Conceptual Improvements

- A** Nature-based play area
- B** Forest trail (earthen, woodchip)

Existing Conditions Legend

- Parcel Line
- Sidewalk
- Topography (1' Contour)





# Facilities Analysis – Redtail Park

- Existing Conditions



Existing Conditions Legend

- Parcel Line
- Sidewalk
- Topography (1' Contour)





# Facilities Analysis – Redtail Park

- Conceptual Improvements

- A** Sidewalk connection to existing Eagleville Rd. Sidewalk; ADA connection to parking area.
- B** Shade trees.
- C** Perimeter trail (asphalt, stone dust)
- D** Amend soil, plant shade trees.
- E** Improve existing stormwater basin to meet modern MS-4 standards.
- F** Restroom facility.

Existing Conditions Legend

- Parcel Line
- Sidewalk
- Topography (1' Contour)





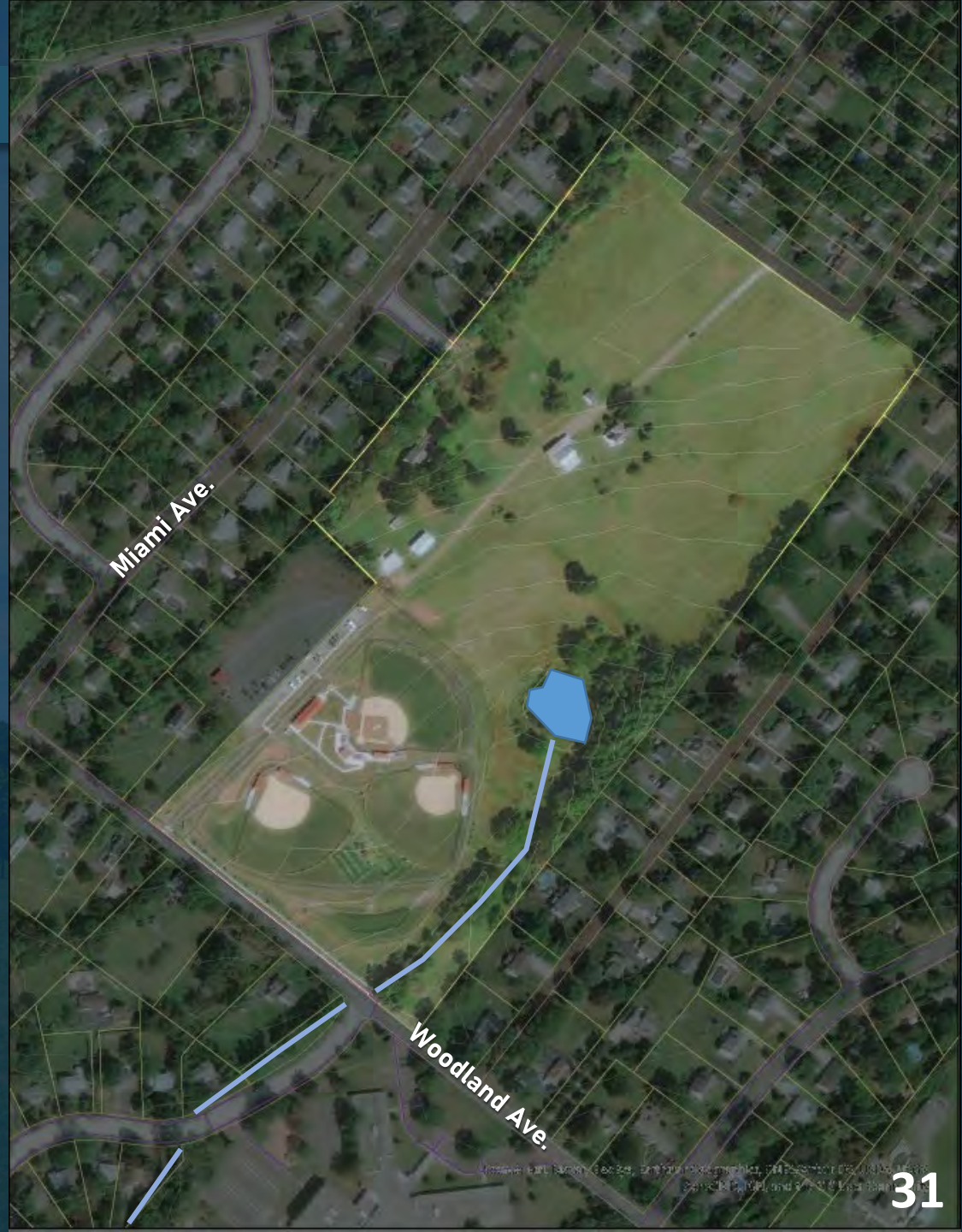
# Facilities Analysis – Mascaro Field

- Existing Conditions



Existing Conditions Legend

- Parcel Line
- Sidewalk
- Topography (1' Contour)





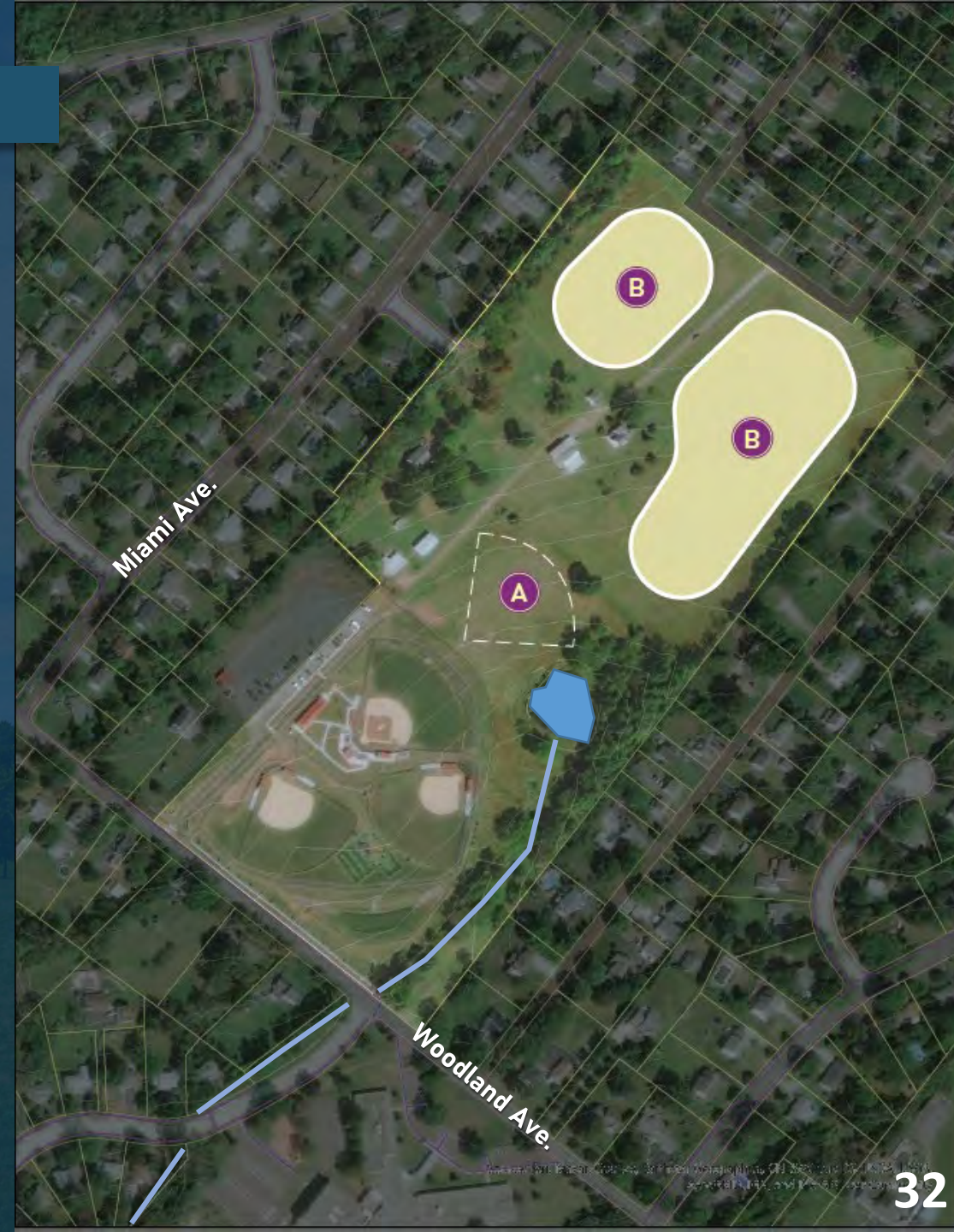
# Facilities Analysis – Mascaro Field

- Conceptual Improvements

- A** Plan for future baseball facility.
- B** Native wildflower and songbird meadows.

Existing Conditions Legend

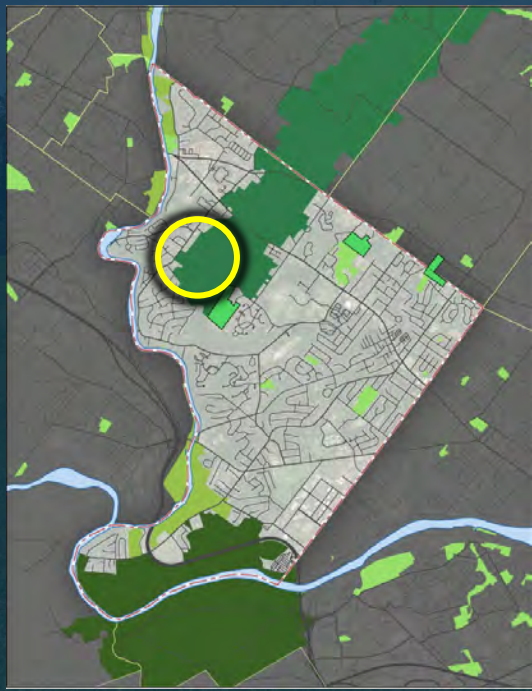
- Parcel Line
- Sidewalk
- Topography (1' Contour)



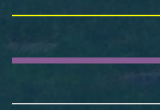


# Facilities Analysis – Evansburg Point Park

- Existing Conditions



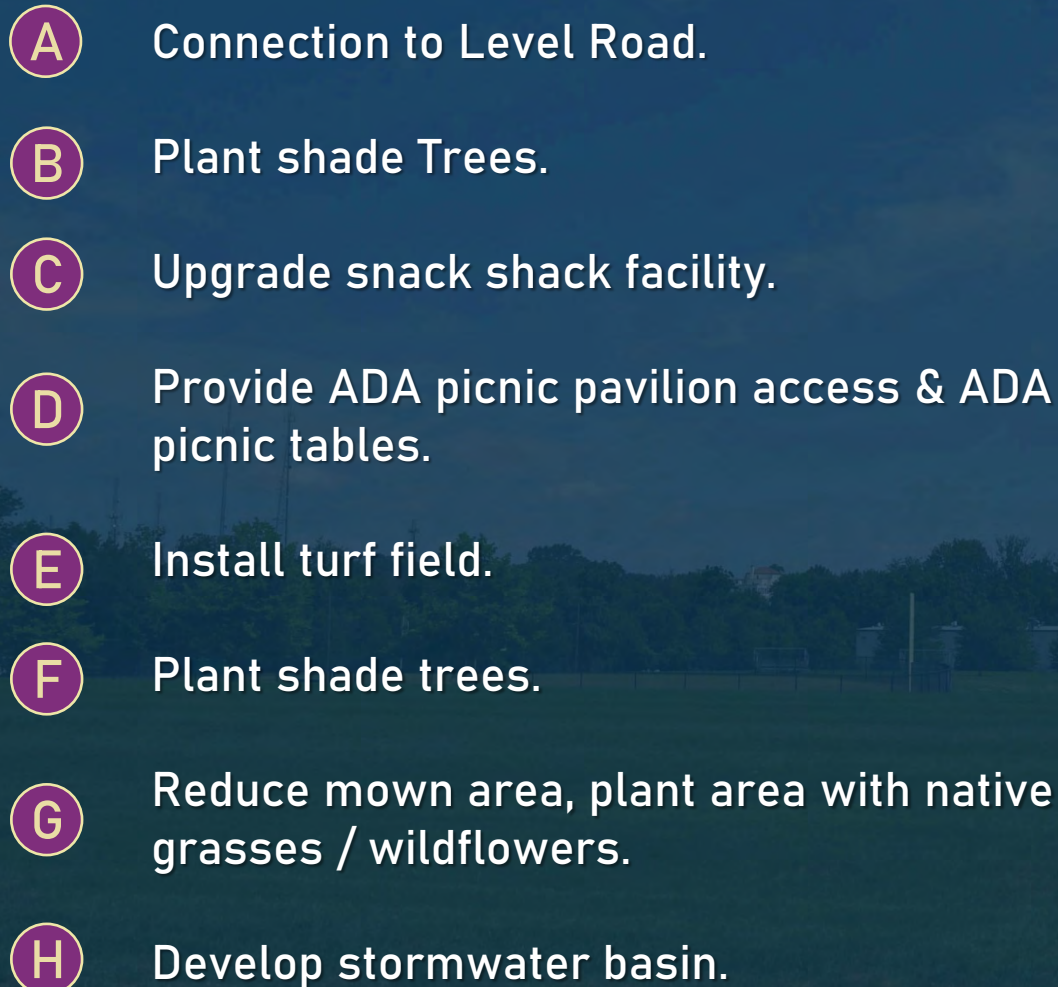
Existing Conditions Legend





# Facilities Analysis – Evansburg Point Park

- **Conceptual Improvements**

- 
- A Connection to Level Road.
  - B Plant shade Trees.
  - C Upgrade snack shack facility.
  - D Provide ADA picnic pavilion access & ADA picnic tables.
  - E Install turf field.
  - F Plant shade trees.
  - G Reduce mown area, plant area with native grasses / wildflowers.
  - H Develop stormwater basin.





# Facilities Analysis – Eskie Park

- Existing Conditions



Existing Conditions Legend



Parcel Line

Sidewalk

Topography (1' Contour)





# Facilities Analysis – Eskie Park

- Conceptual Improvements

- A** Expand swing safety surface area. Add bucket seat swing.
- B** Plant shade trees.
- C** Re-grade for multi-use field.
- D** Add ADA benches in pavilion. Expand playground safety surface area.
- E** BMP plantings near impervious surfaces at public works.
- F** Plant additional shade trees, install benches
- G** Additional parking - 25 spaces.
- H** Multi-use perimeter trail (.65 miles)
- I** Potential parcel for open space acquisition.





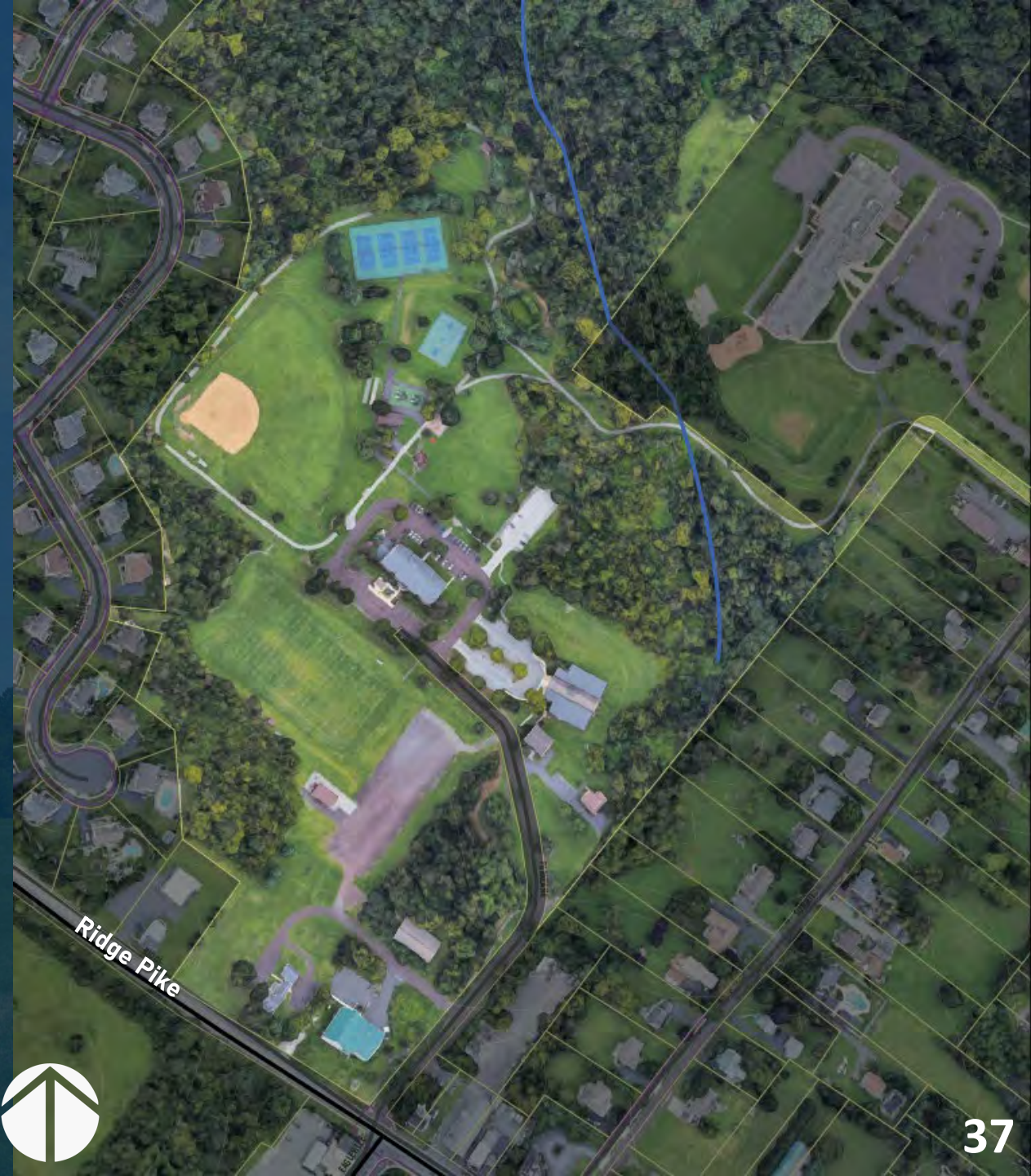
# Facilities Analysis – Eagleville Park

- Existing Conditions



Existing Conditions Legend

- Parcel Line
- Sidewalk
- Topography (1' Contour)





# Facilities Analysis – Eagleville Park

- Conceptual Improvements

- A** Playground area, all ages.
- B** Improve ADA path to bocce courts. ADA tables in picnic grove.
- C** Pave and formalize parking area.
- D** Field Option A: Aerate & seed; Field Option B: Make turf field, stormwater BMP
- E** Improve parking entry and wayfinding signage.





# Facilities Analysis – Eagleville Park

- Conceptual Improvements

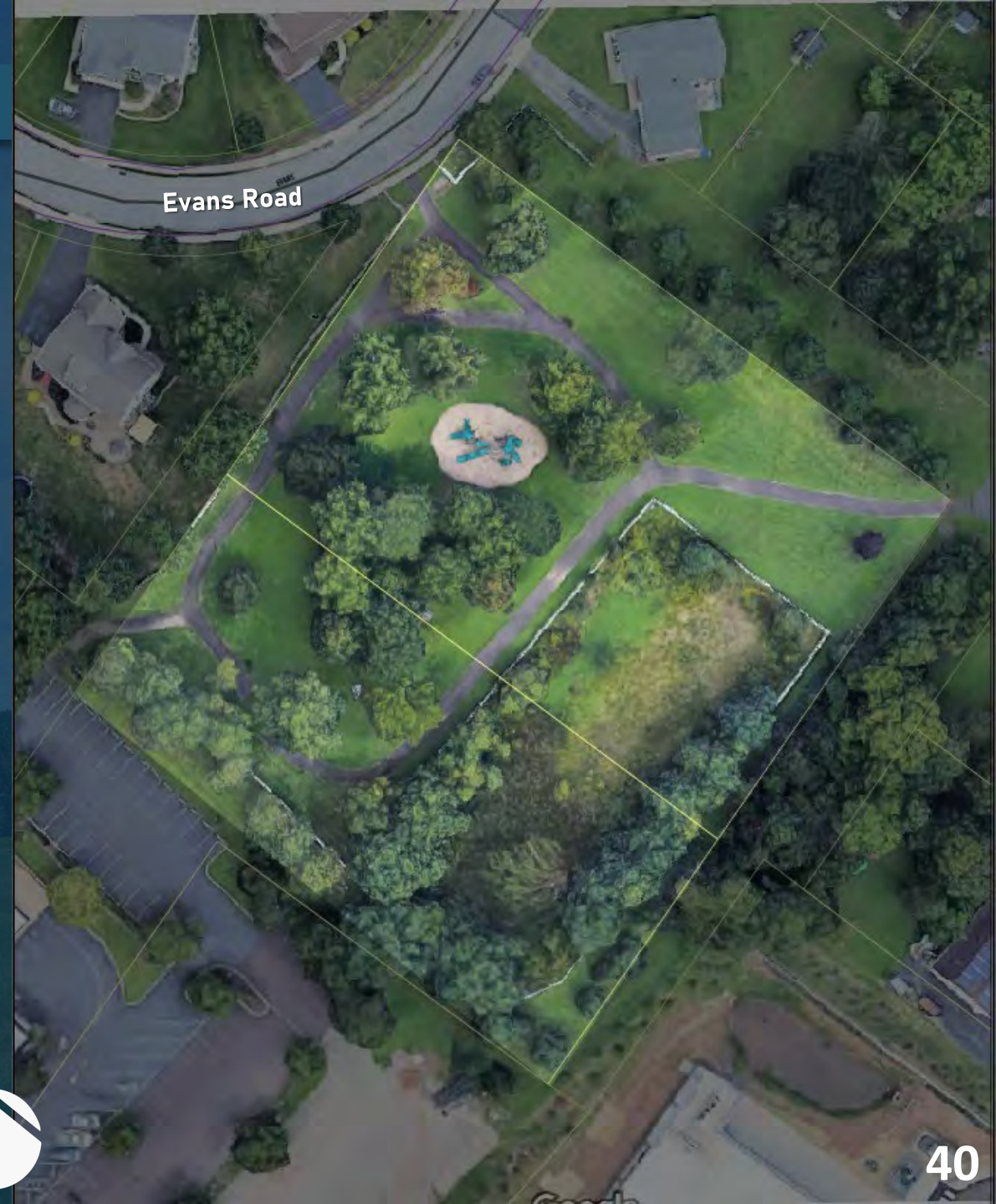
- F** Make restroom entrance ADA accessible. Remove walkway partition between restroom doors.
- G** Expand swing safety surface area.
- H** Move amphitheater from area K to upper lawn.
- I** Provide ADA picnic tables, repurpose bocce court for horseshoes or other activity.
- J** Make pathway ADA accessible.
- K** Convert amphitheater stage to pavilion. Move amphitheater to area H.





# Facilities Analysis – Dell Angelo Park

- Existing Conditions



Existing Conditions Legend  
Parcel Line  
Sidewalk  
Topography (1' Contour)





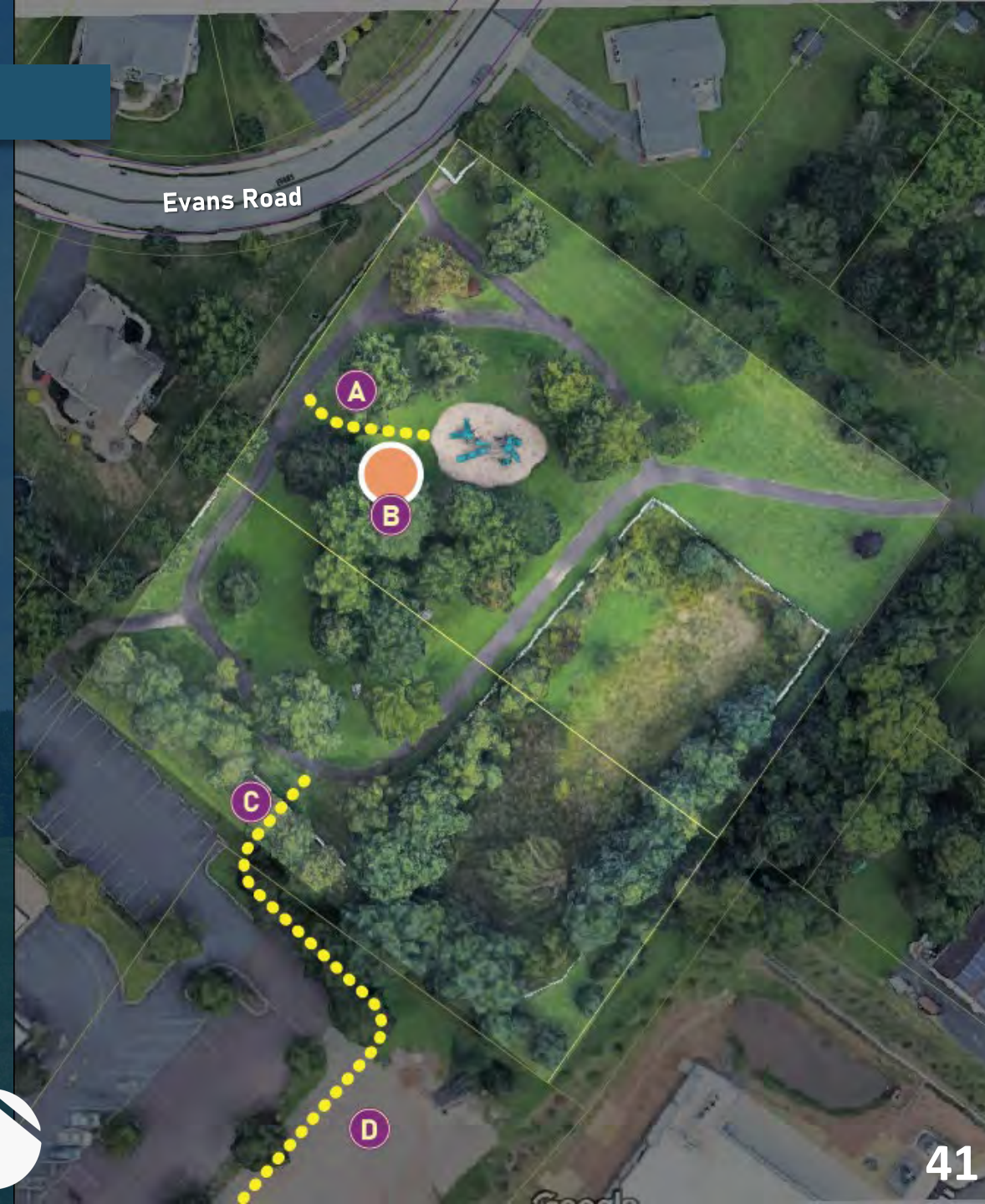
# Facilities Analysis – Dell Angelo Park

- Conceptual Improvements

- A** ADA path to playground area.
- B** Add swing set with safety surface area.
- C** Connection to Ridge Pike.
- D** Park signage along Ridge Pike, consider acquisition of parcel for park space (Currently for sale). Coordinate efforts with Ridge Pike Redevelopment Plan.

Existing Conditions Legend

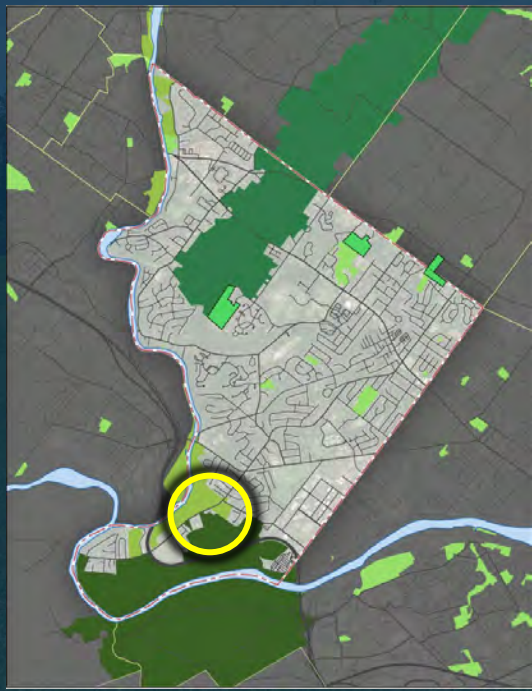
- Parcel Line
- Sidewalk
- Topography (1' Contour)





# Facilities Analysis – ARA Fields

- Existing Conditions



Existing Conditions Legend





# Facilities Analysis – ARA Fields

- **Conceptual Improvements**

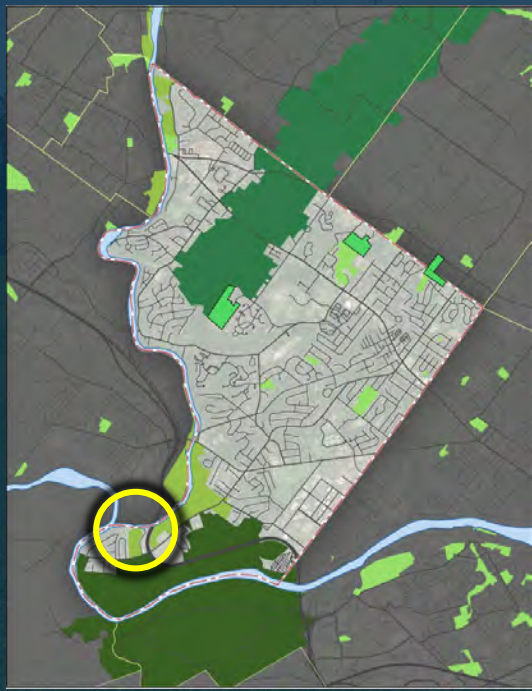
- A** Add shade trees to parking area.
- B** Thin tree buffer for security visibility.
- C** Add pavilion for spectators, close path to vehicles.
- D** ADA walking path to connect parking areas and ballfields (stone dust or asphalt).
- E** Expand safety surface area for swing set.
- F** Plant native grasses along swale.
- G** Expand safety surface area for playground.
- H** Sidewalk connection along Audubon Road.
- I** Plant shade trees along Audubon Road.
- J** Pedestrian intersection crossing improvements:  
ADA curb cuts, detectable warning surfaces.
- K** Additional 30 car parking area, coordinate with  
Montgomery County (County-owned parcel).



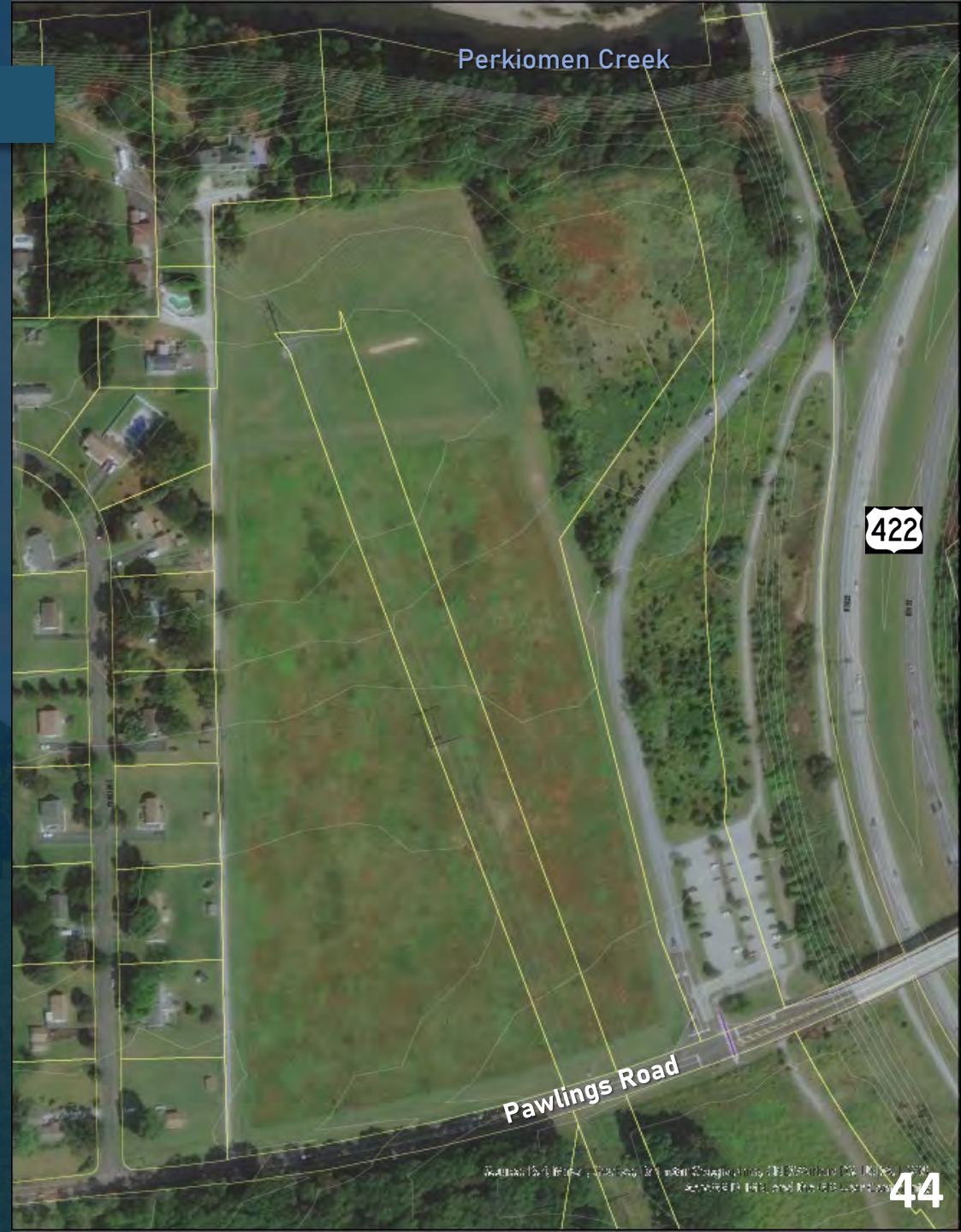
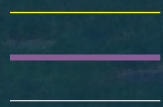


# Facilities Analysis – Knights Cricket Field

- Existing Conditions



Existing Conditions Legend





# Facilities Analysis – Knights Cricket Field

- Conceptual Improvements

**A** Expand parking facilities.

**B** Include restroom facility.

**C** Maintain as open space.

\*Consider dog park facility,  
Coordinate with County.





# Facilities Analysis – Cranberry Park / Central Perkiomen Park

- Conceptual Improvement



Existing Conditions Legend

- Parcel Line
- Sidewalk
- Topography (1' Contour)

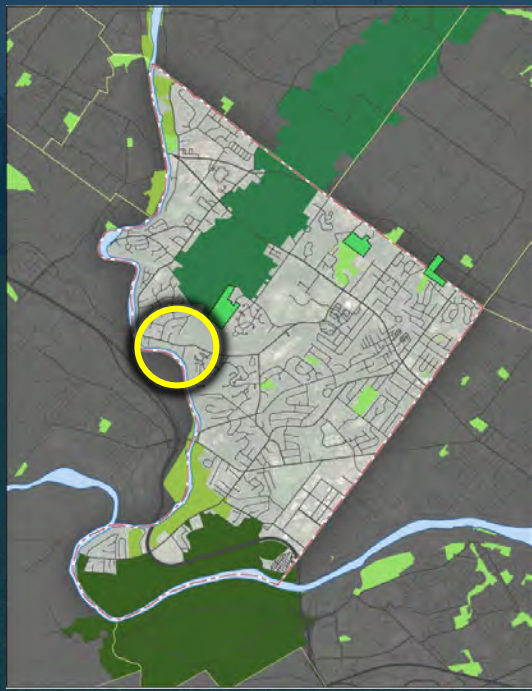
Germantown Pike

Perkiomen Creek



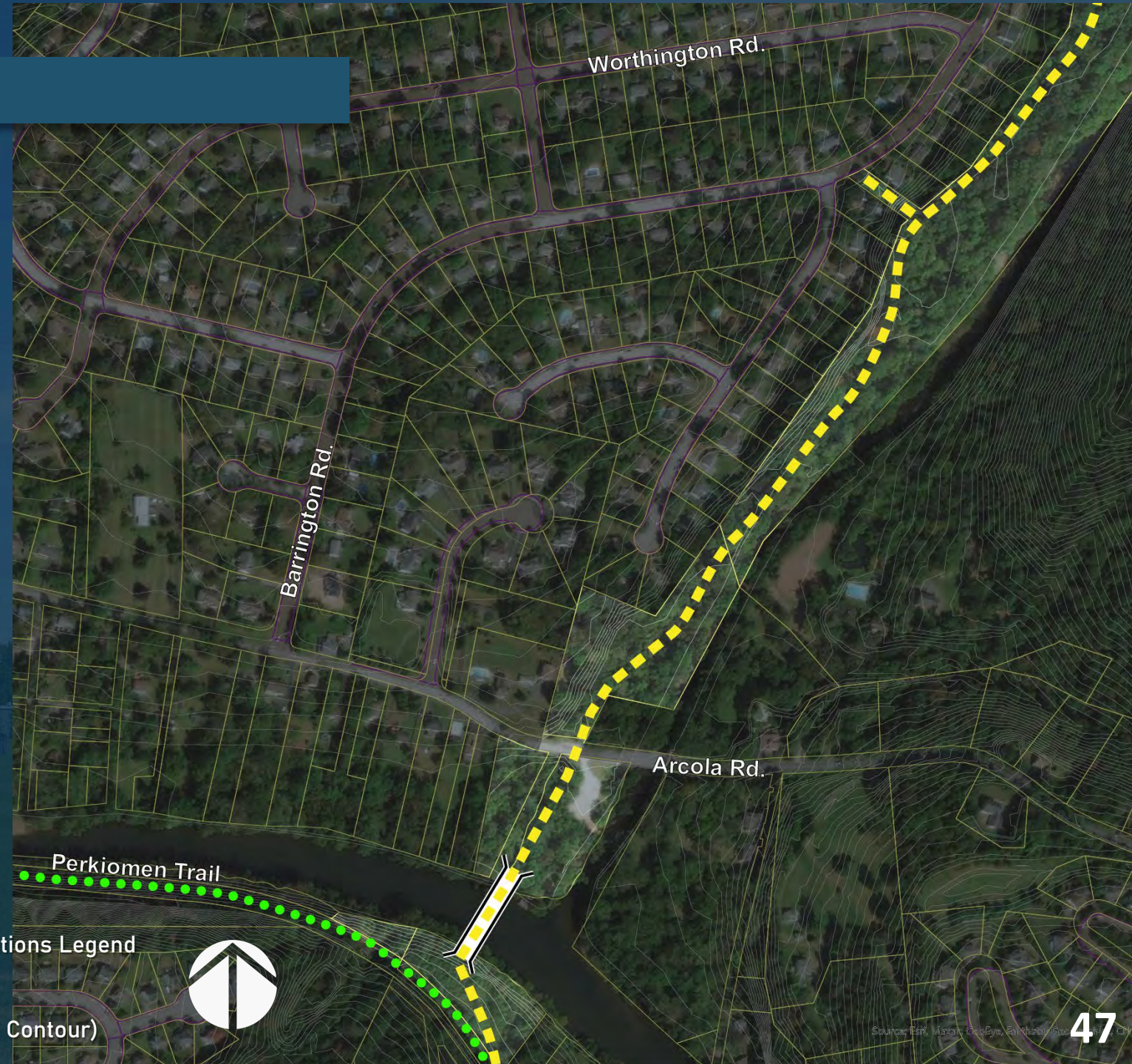
# Facilities Analysis – Hoy Park

- Conceptual Improvement



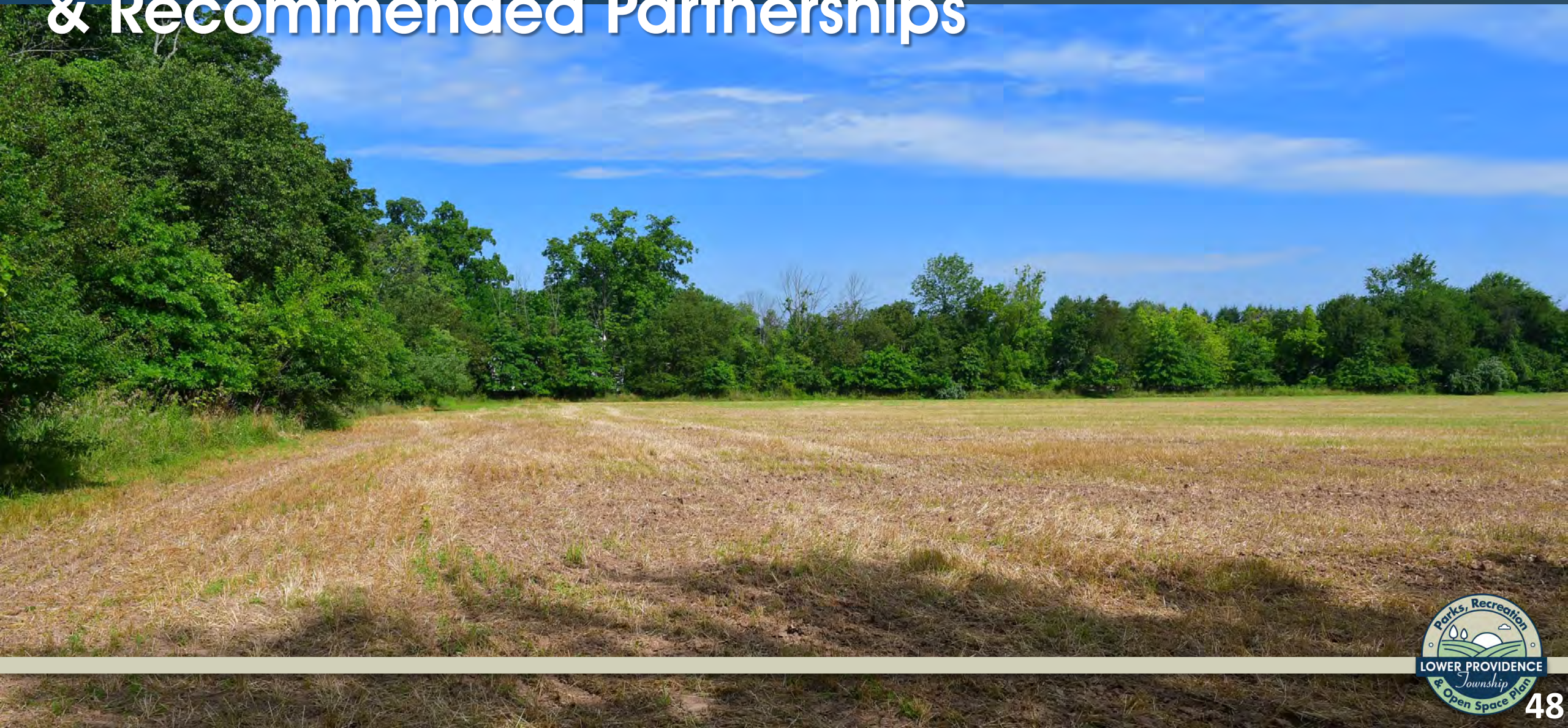
Existing Conditions Legend

- Parcel Line
- Sidewalk
- Topography (1' Contour)





# Conceptual Open Space Acquisitions & Recommended Partnerships





# Potential Open Space & Rec Acquisition

- Owner: **KeyBank**
- Size: **27 Acres**
- Characteristics:  
Agricultural fields





# Projected Future Facility Needs

**Option A:** Develop for active recreation facilities.

## **Option B:** Preserve Agriculture Fields

- Lower Providence Township has minimal preserved agricultural lands, in this option LP can purchase and permanently preserve this agriculture area
- Lower Providence should consider working with Worcester Twp. In a coordinated effort to acquire open space.





# Potential Open Space & Rec Acquisition

- Owner: J. Heyser (identified in 2002/2005 OS&R Plan; BooBoo Realty)
- Size: 36 Acres; 17.5 Acres
- Characteristics: Wooded / dense vegetation



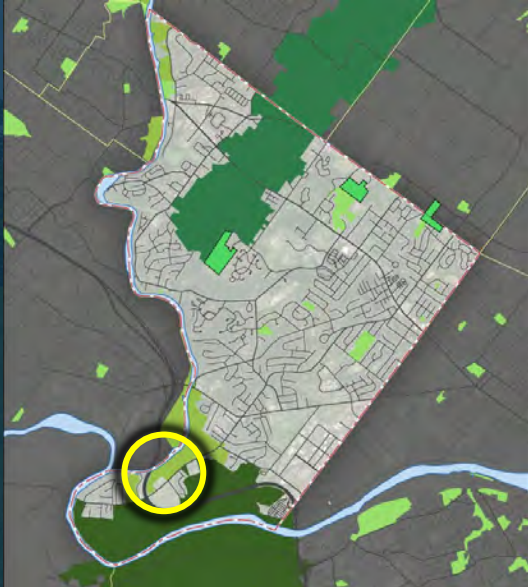
ack





## Potential Open Space & Rec Acquisition

- Owner: St. Gabriels Property (Philadelphia Protectory For Boys)
- Size: 46.5 Acres





# Potential Open Space & Rec Acquisition

- Owner: **St. Gabriels Property (Philadelphia Protectory For Boys)** – identified in 2002/2005 OS&R Plan
- Size: **46.5 Acres**
- Potentially use St. Gabriels land (not building) to connect Audubon Center to Valley Forge & protect landscape
- Acquisition can connect ballfields and underutilized portion of Valley Forge Park
- Local, County, & Federal Project
- Could be potential application for future official map – designate fields as open space





# Potential Open Space & Rec Acquisition

- Owner: **Ridgetop Associates**
- Size: **20 Acres**
- Whole parcel 50 acres, open space +/- 20 acres – all owned by RA





# Recommended Partnership

- Owner: **DCNR – Evansburg State Park**
- Potential Use : **Sports Fields**

*(\*partnership similar to Warrior Field model)*





# Recommended Partnership

- Owner: **National Park Service**
- Potential Use : **River Access**





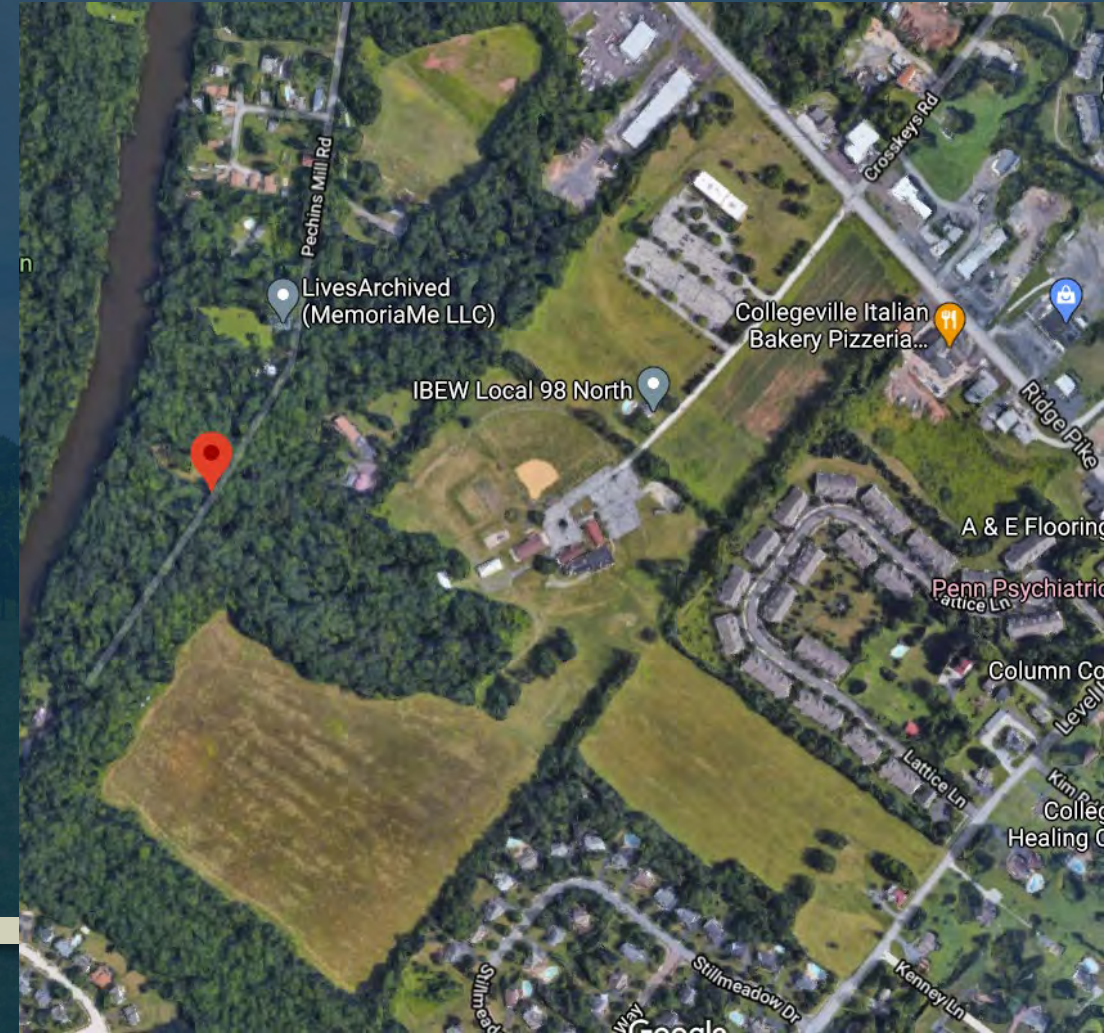
# High Value Parcels for Open Space

Identified in 2002 Open Space Plan & 2005 Open Space Plan Update

- *Eagleville Hospital Open Space*



- *Pechins Mill Road Area.*

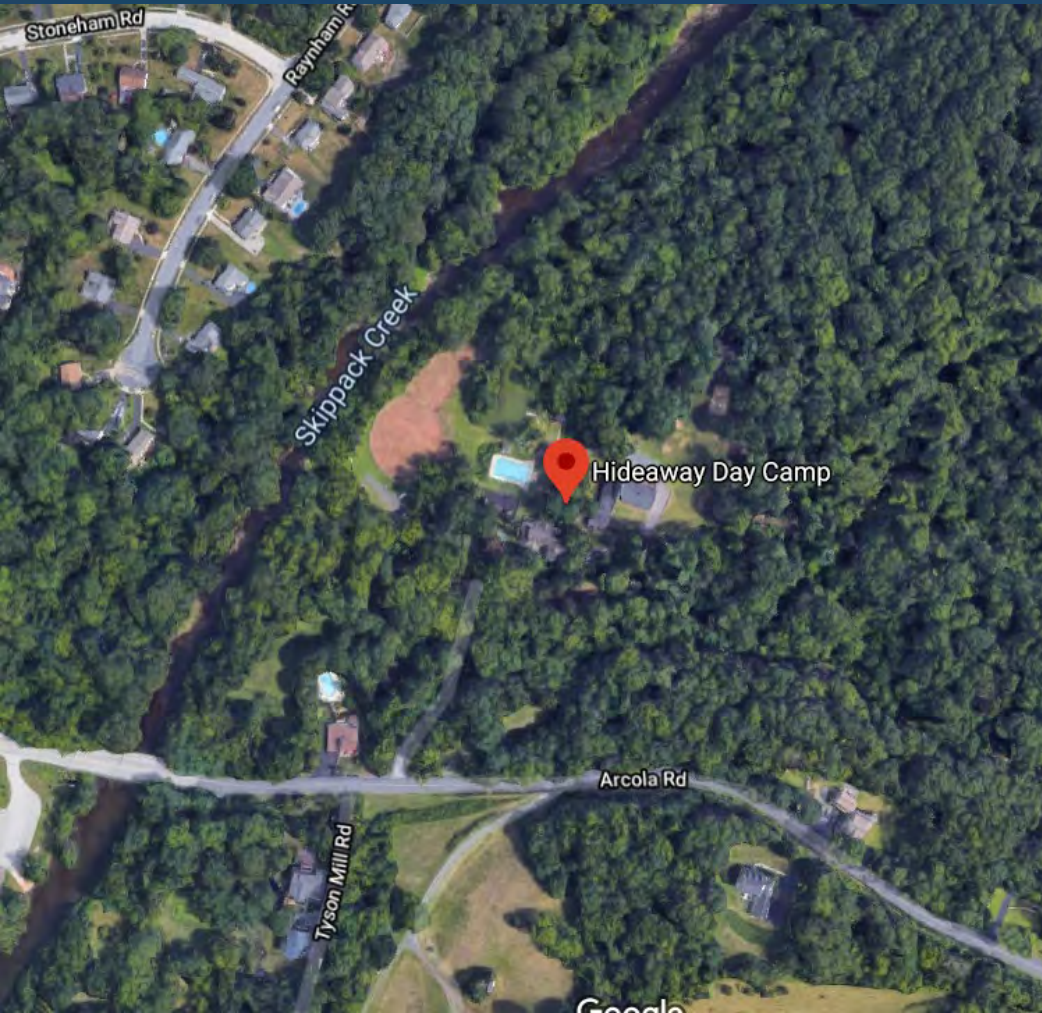




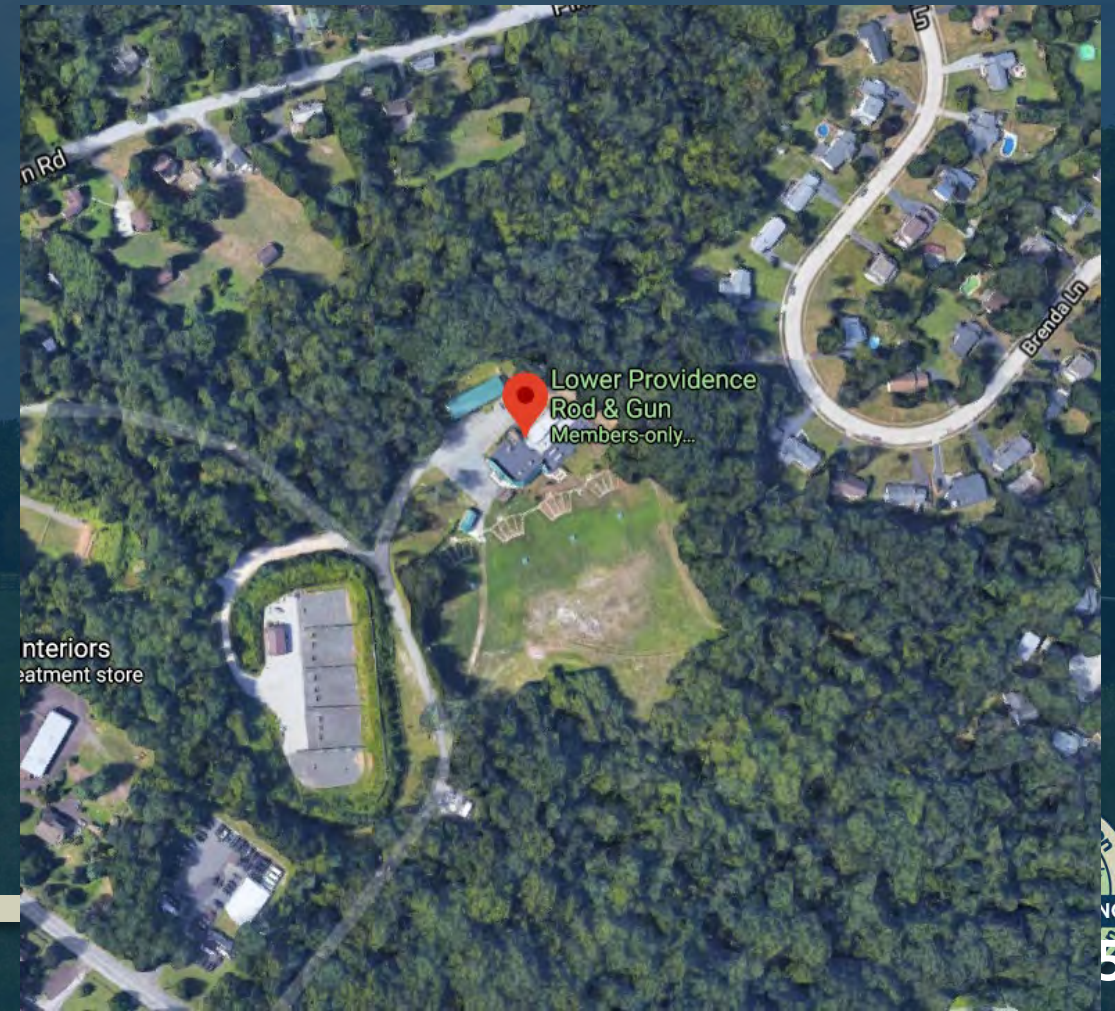
# High Value Parcels for Open Space

Identified in 2002 Open Space Plan & 2005 Open Space Plan Update

- *Arcola Road – Camp Hideaway.*



- *Lower Providence Rod and Gun Club.*





# High Value Parcels for Open Space

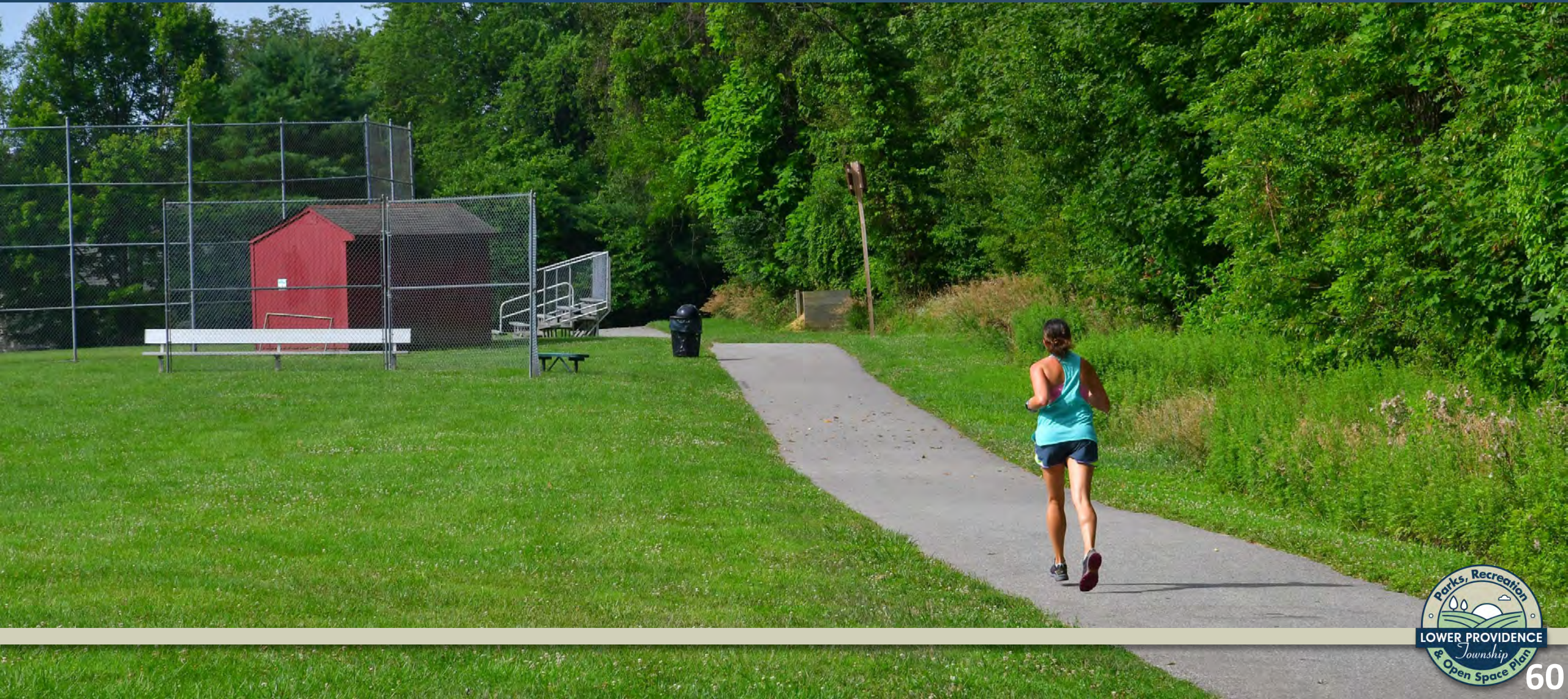
*Identified in 2002 Open Space Plan & 2005 Open Space Plan Update*

- *Park Avenue, between Woodland Avenue and Shannondell.*





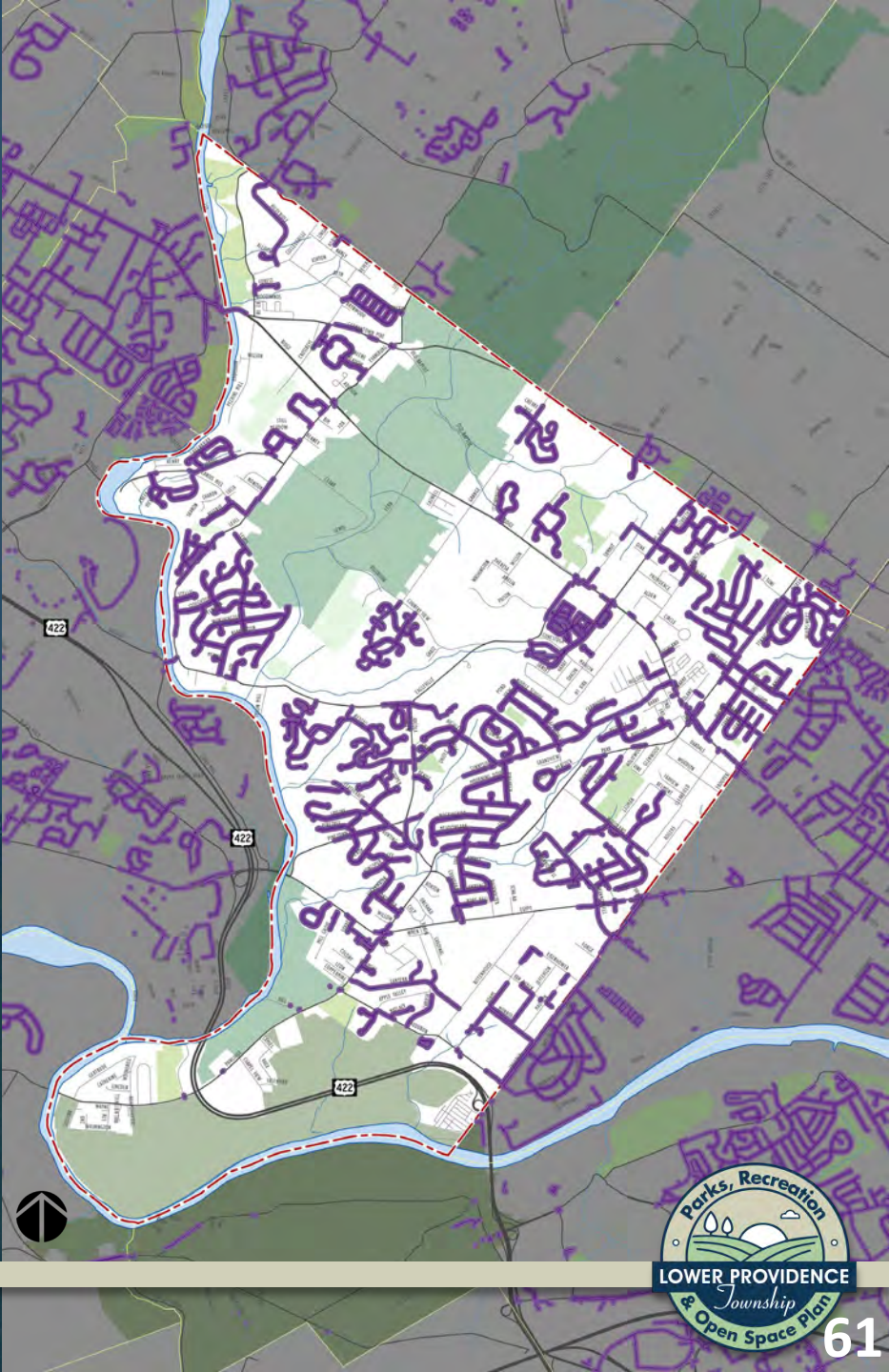
# Multimodal Connections





# Existing Sidewalks

— Existing Sidewalk

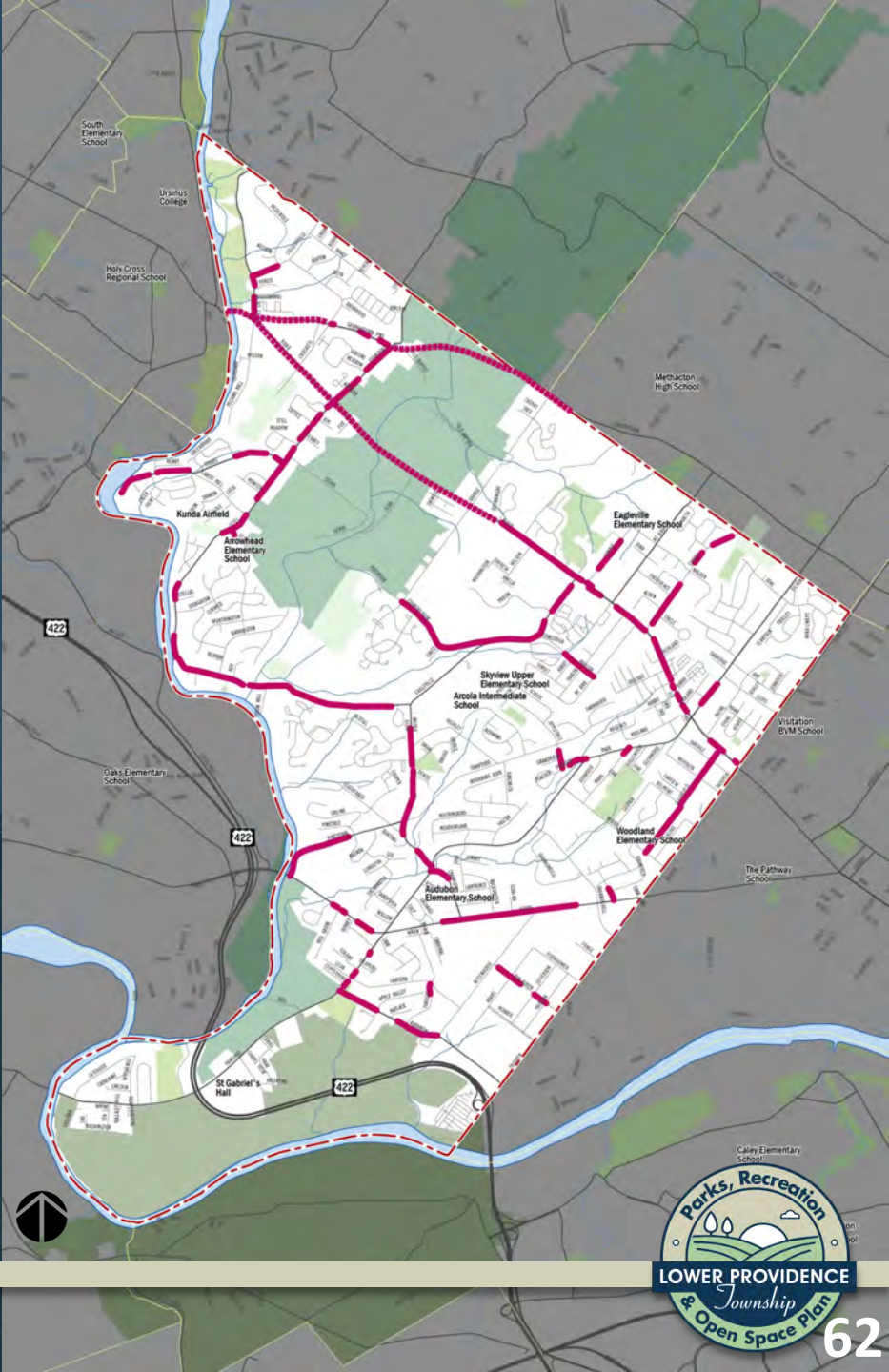




# Sidewalk Gaps

Existing Sidewalk

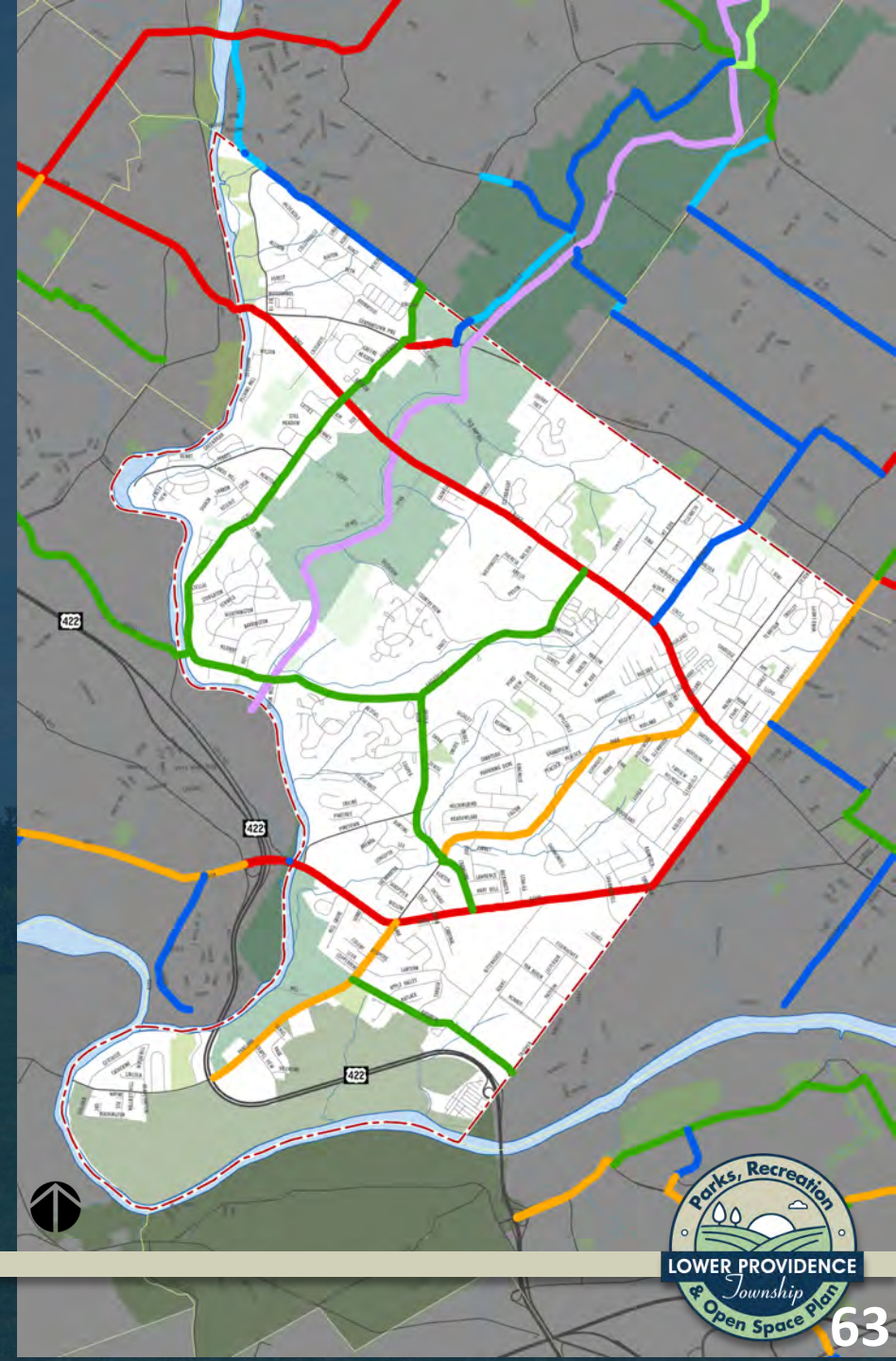
Sidewalk Gap





# Conceptual Bike Connections

- Bike Montco Routes

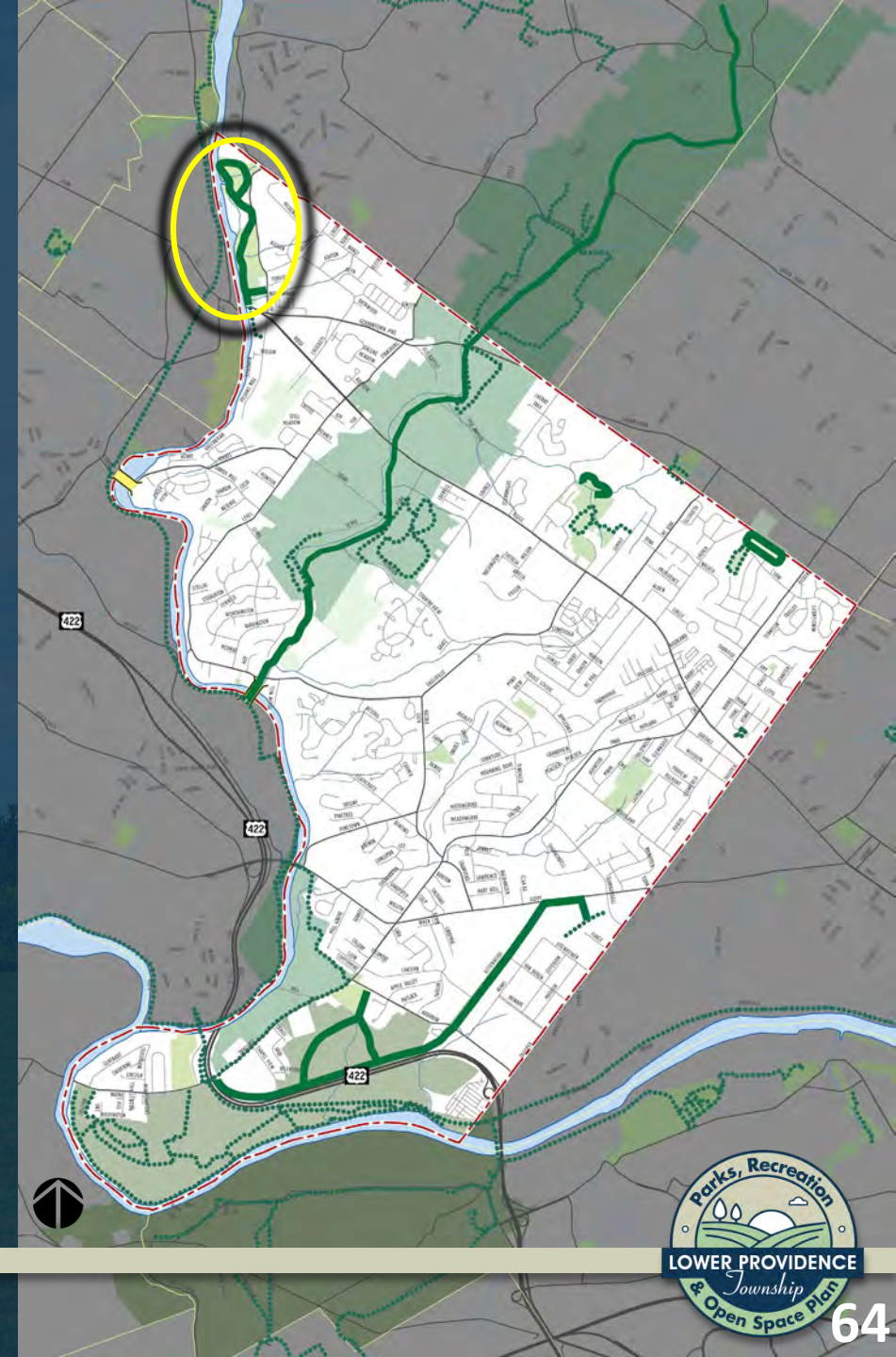




# Conceptual Trail Connections

## Proposed Trails

- Central Perkiomen Valley Park
- Evansburg State Park Connector
- Yerkes Road Pedestrian Bridge
- Eskie Park Loop Trail Extension
- Valley Forge National Park Connector
- Park Pointe Sidepath

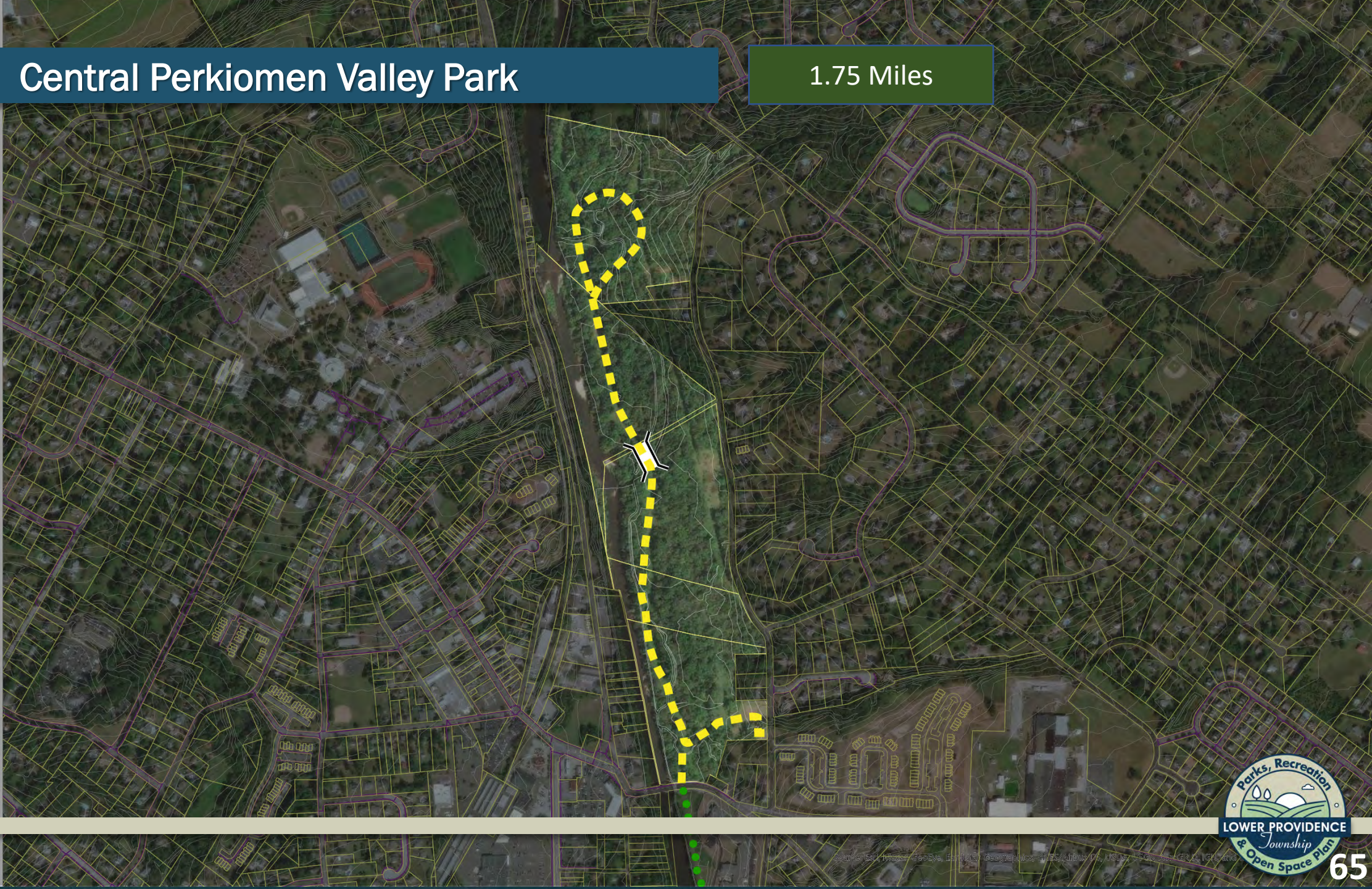




Trail:

Central Perkiomen Valley Park

1.75 Miles

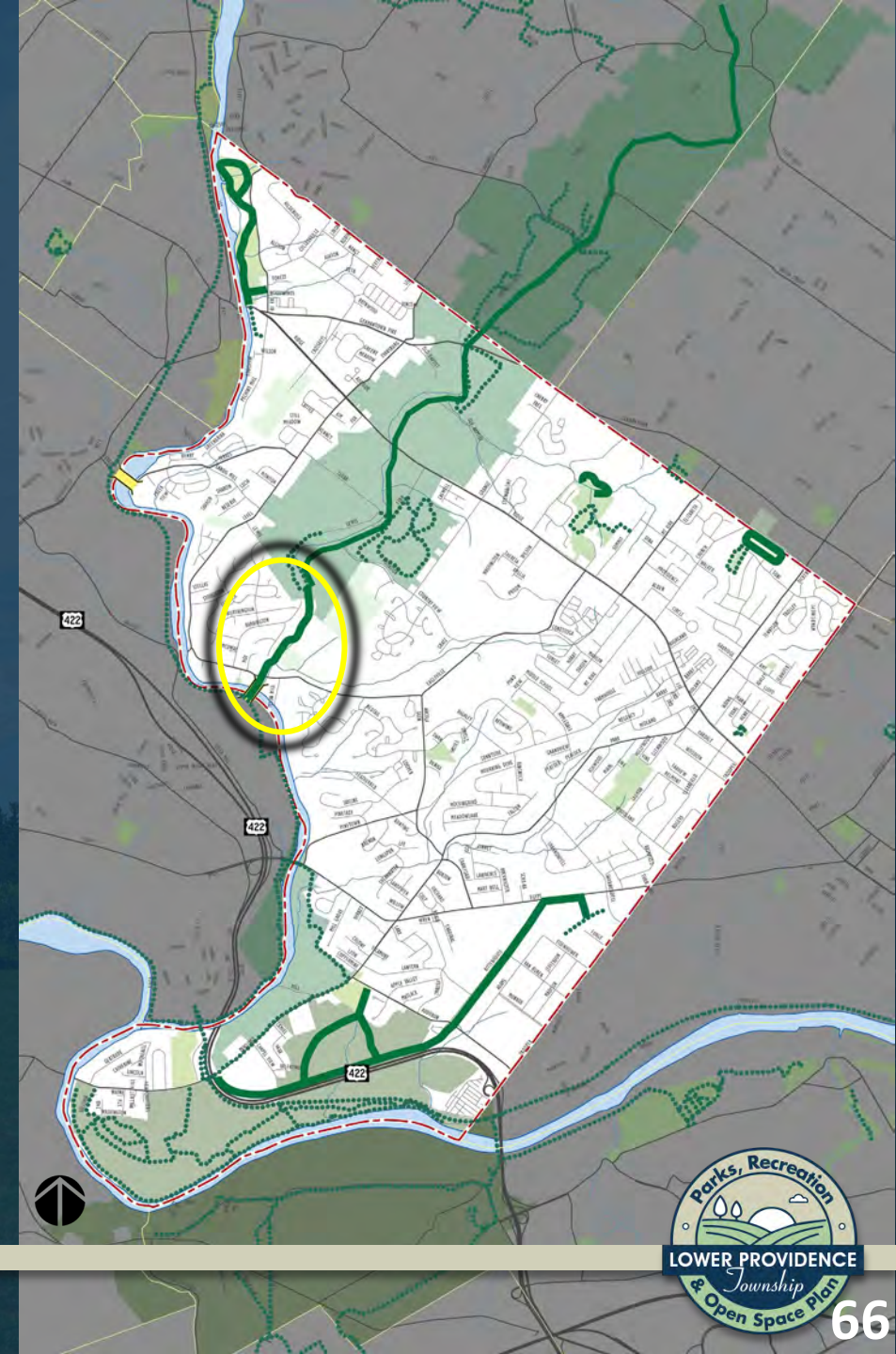




# Conceptual Trail Connections

## Proposed Trails

- Central Perkiomen Valley Park
- **Evansburg State Park Connector**
- Yerkes Road Pedestrian Bridge
- Eskie Park Loop Trail Extension
- Valley Forge National Park Connector
- Park Pointe Sidepath





**Trail:**

## Evansburg State Park Connector

3.25+ Miles

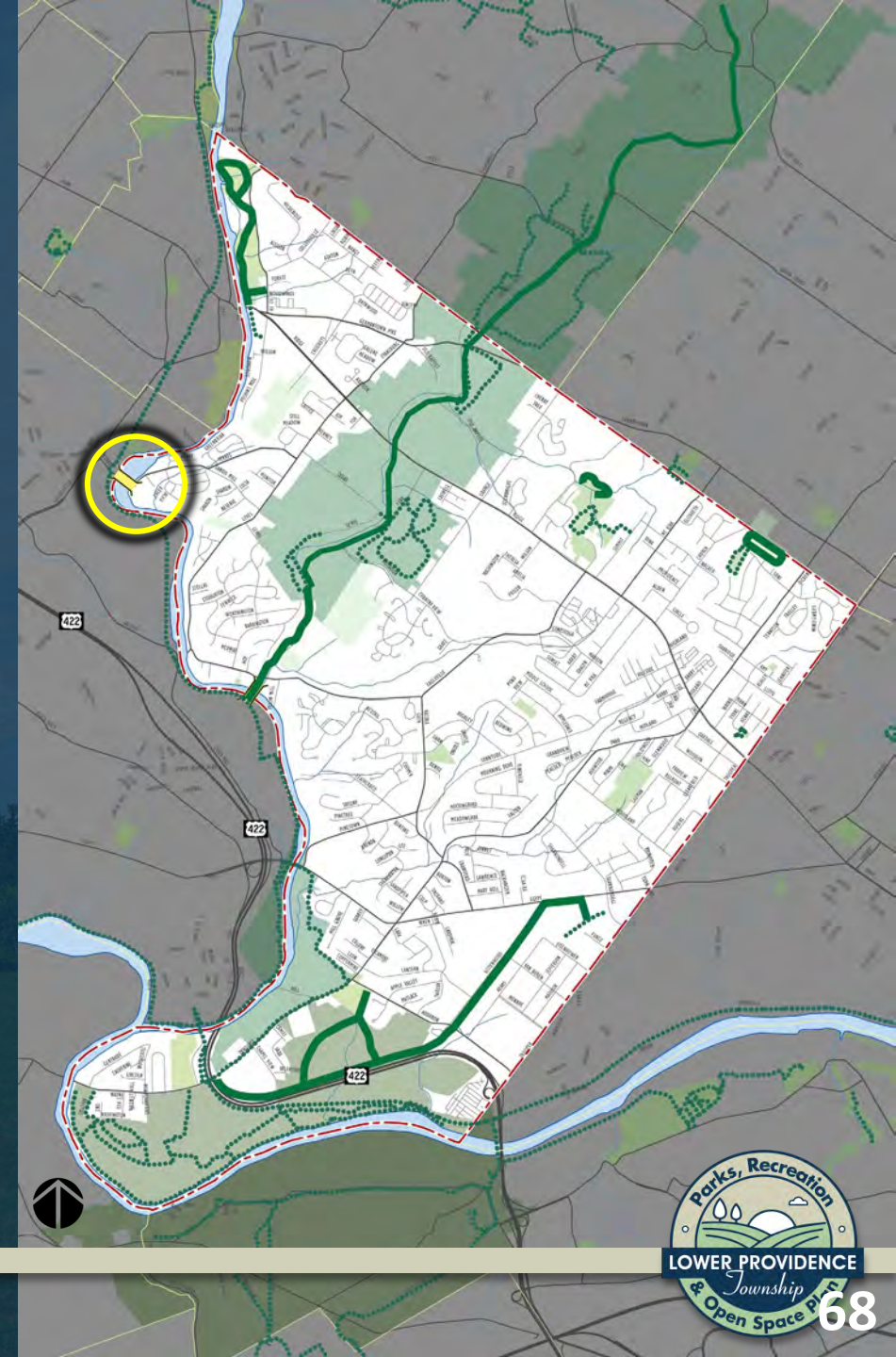




# Conceptual Trail Connections

## Proposed Trails

- Central Perkiomen Valley Park
- Evansburg State Park Connector
- **Yerkes Road Pedestrian Bridge**
- Eskie Park Loop Trail Extension
- Valley Forge National Park Connector
- Park Pointe Sidepath





# Trail: Yerkes Road Pedestrian Bridge

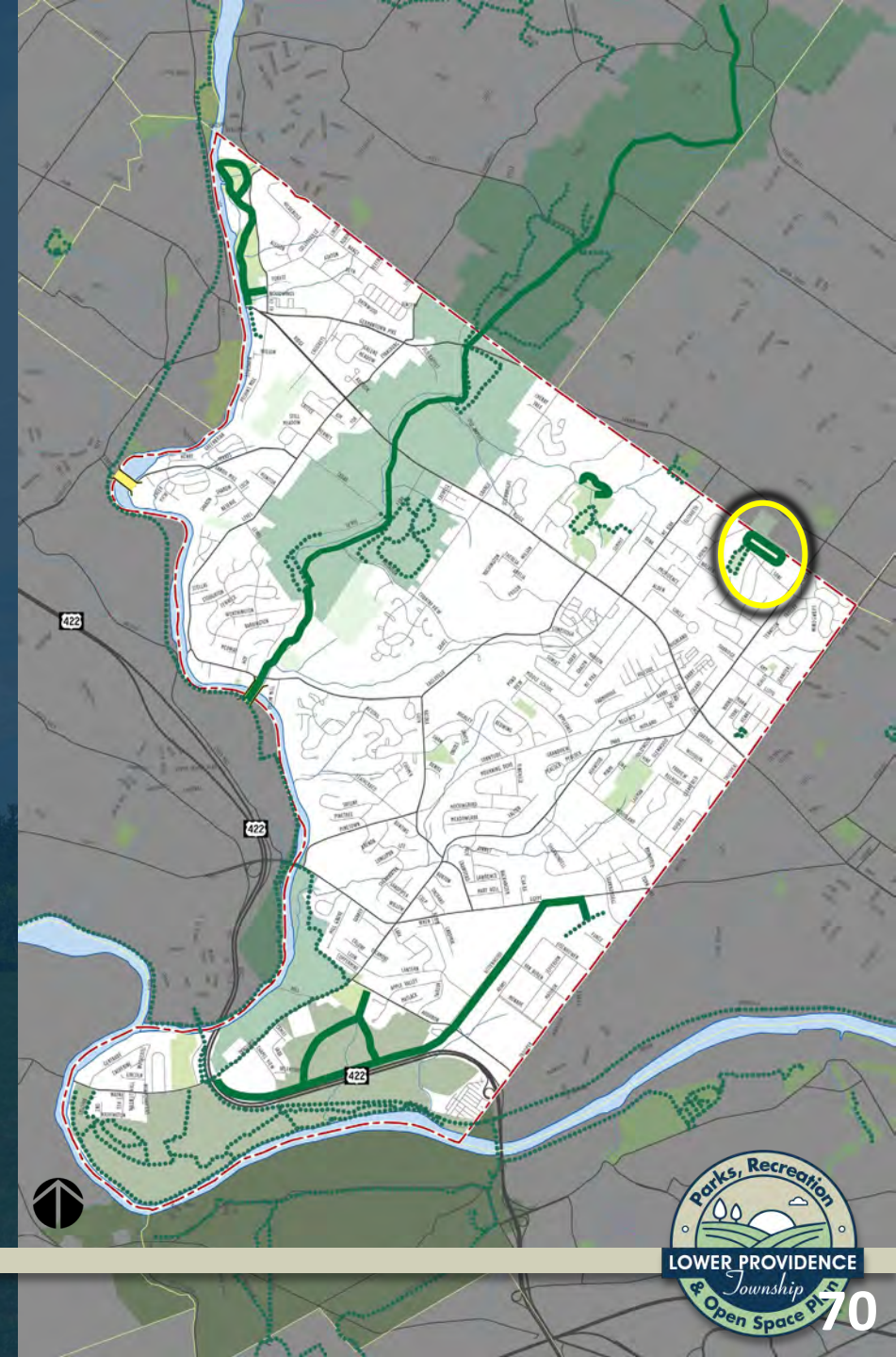




# Conceptual Trail Connections

## Proposed Trails

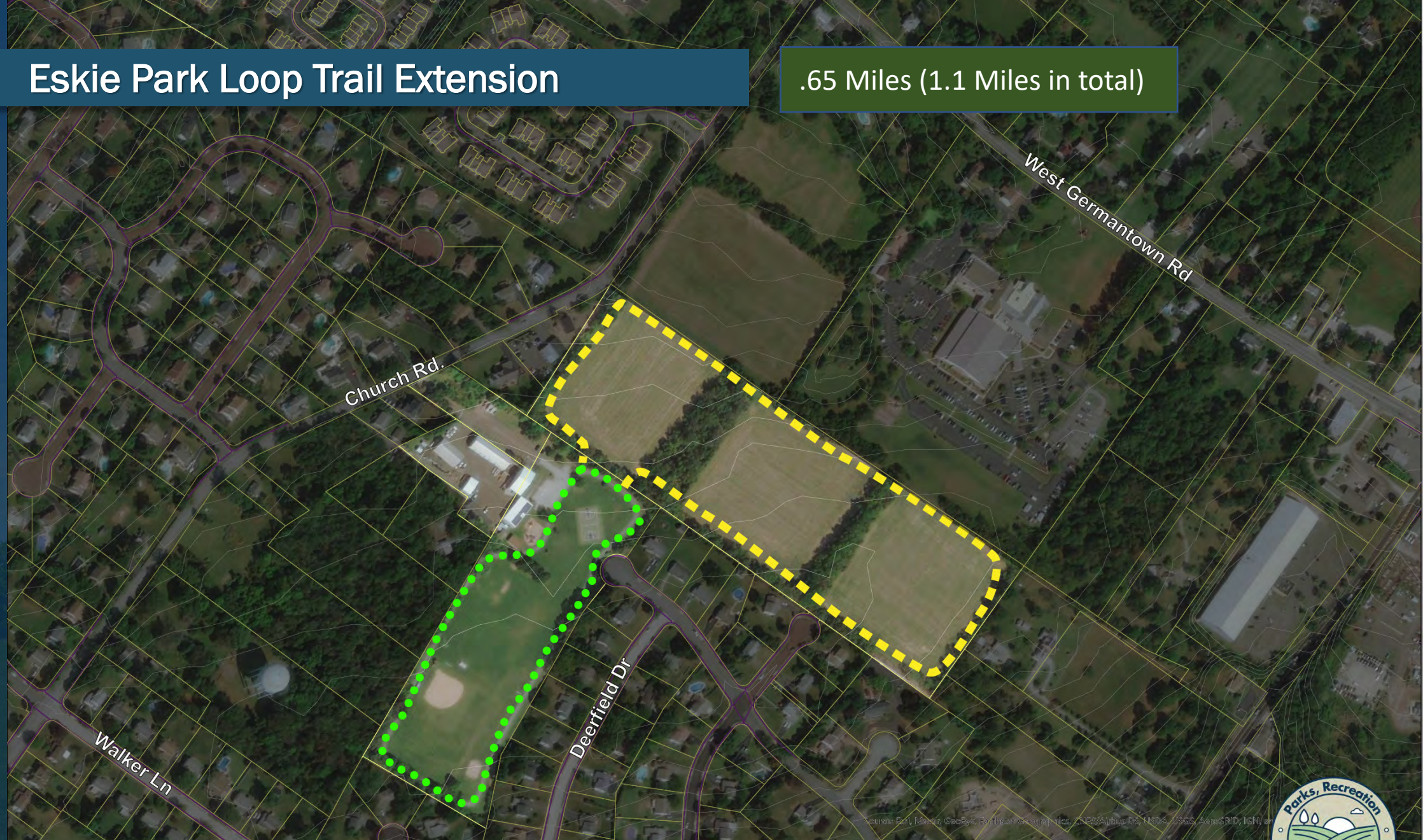
- Central Perkiomen Valley Park
- Evansburg State Park Connector
- Yerkes Road Pedestrian Bridge
- **Eskie Park Loop Trail Extension**
- Valley Forge National Park Connector
- Park Pointe Sidepath





# Trail: Eskie Park Loop Trail Extension

.65 Miles (1.1 Miles in total)

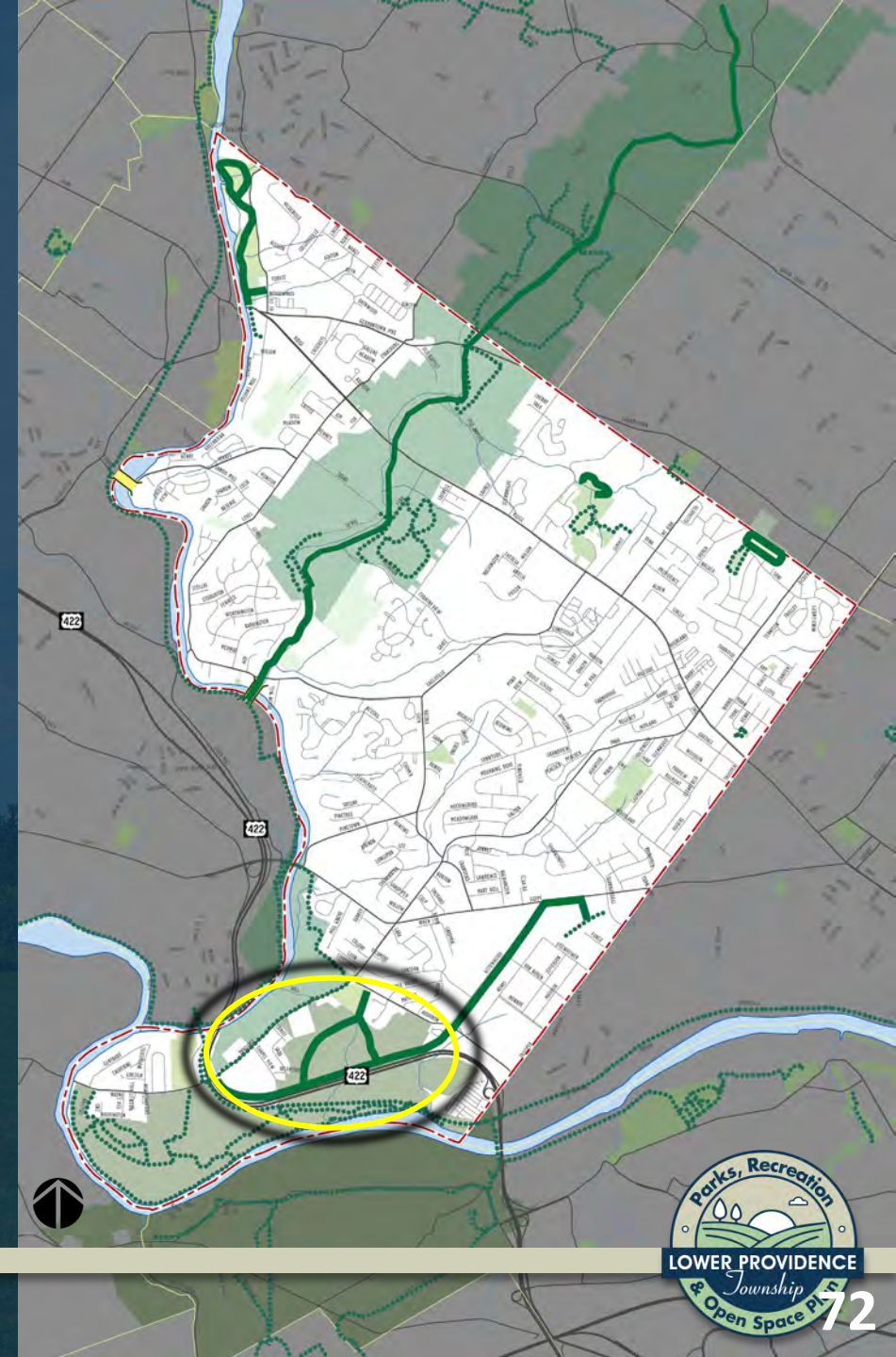




# Conceptual Trail Connections

## Proposed Trails

- Central Perkiomen Valley Park
- Evansburg State Park Connector
- Yerkes Road Pedestrian Bridge
- Eskie Park Loop Trail Extension
- **Valley Forge National Park Connector**
- Park Pointe Sidepath





Trail: Valley Forge National Park Connector

2.7 Miles

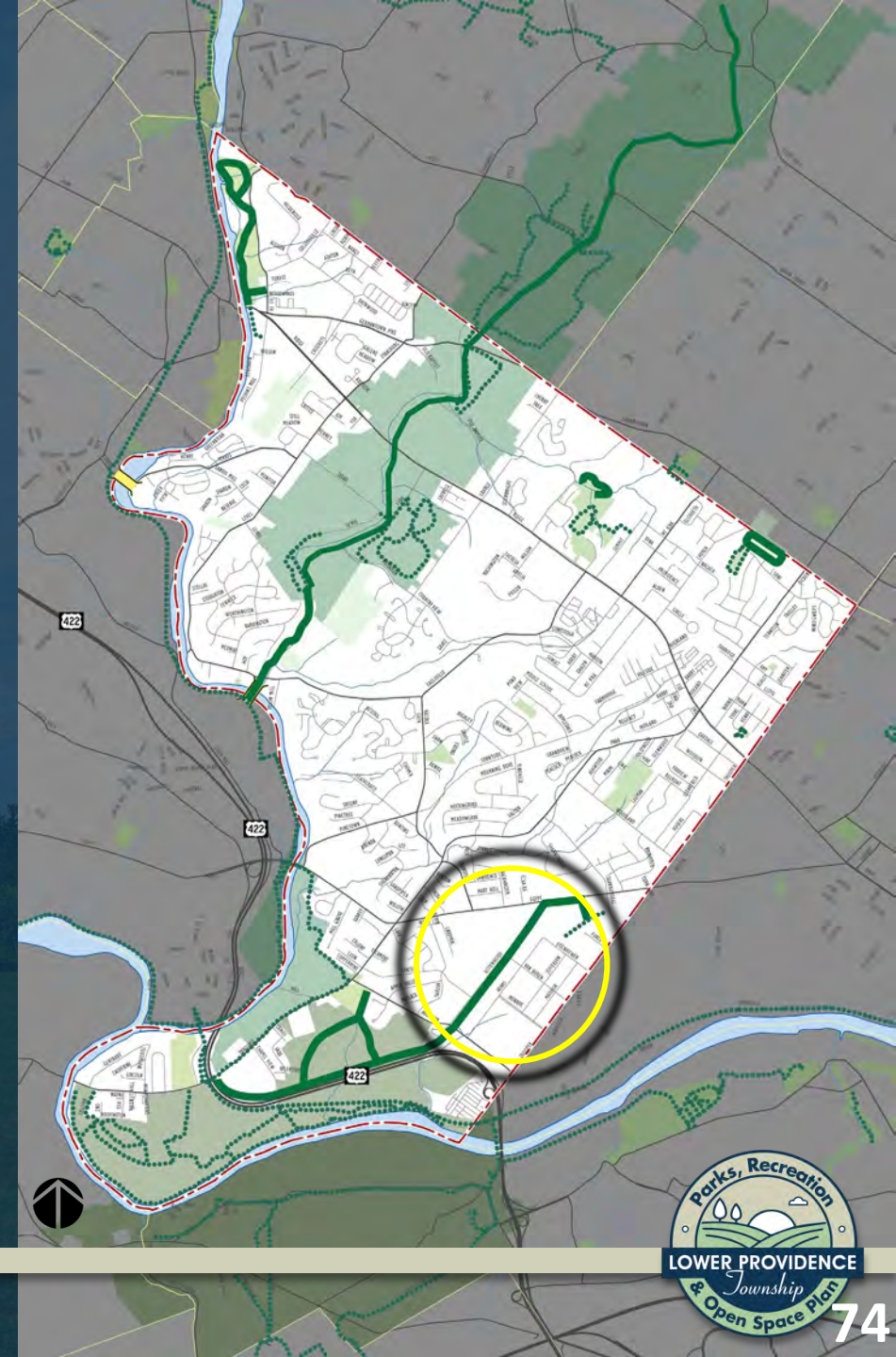




# Conceptual Trail Connections

## Proposed Trails

- Central Perkiomen Valley Park
- Evansburg State Park Connector
- Yerkes Road Pedestrian Bridge
- Eskie Park Loop Trail Extension
- Valley Forge National Park Connector
- **Park Pointe Sidepath**





Trail: Park Pointe Sidepath

1.4 Miles

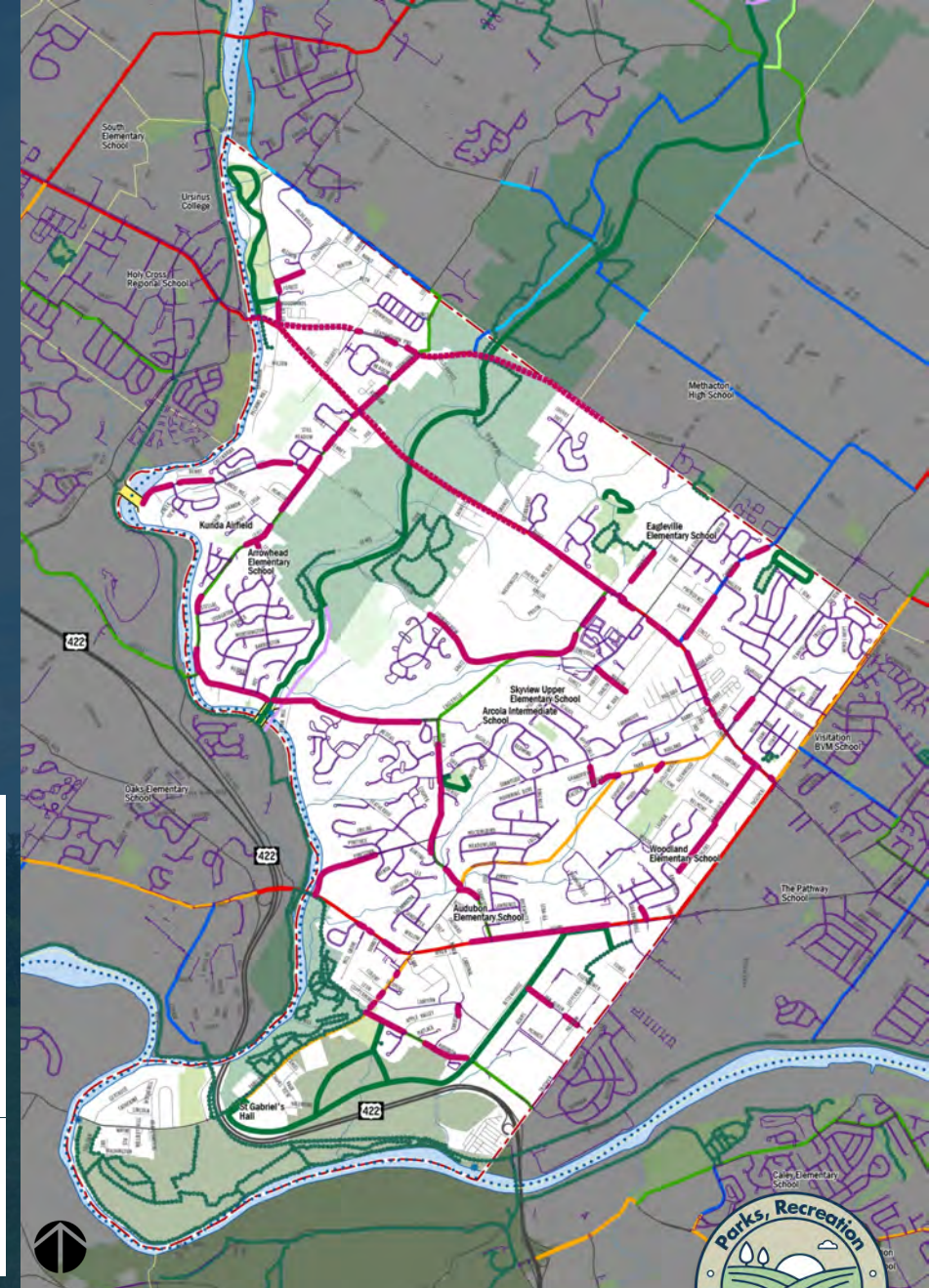


Connects  
to Valley  
Forge



# Conceptual Trail Connections

- Connectivity Network – Work in progress, low stress routes to be examined
- Input needed from Public:
  - More possible trail alignments?
  - On road alignments, low stress preferable
  - Missing critical sidewalk gaps





# Maintenance & Programming

## Recreation Programming Opportunities

- Improve offerings by provide year-round activities
- Indoor facilities are needed for an enhanced programming schedule
- Create partnerships (schools, county, private facilities), M.O.U.'s
- Programs are well received, “climb the ladder”
- Third Party Contractors
- Community events well received





# Maintenance & Programming

## Financial Structure

- Sound budgetary system is in place
- Additional revenues will be realized if/when additional programs are introduced
- Program fees are well thought out and a sound practice is in place for fee determination
  - New programs may take a year or two to become profitable
  - Resident rate vs/ non-resident rate

## Maintenance Practices

- Solid maintenance practices exist
- Opportunities exist for increased park amenities





# Maintenance & Programming

## Risk Management

- Consumer Product Safety Commission guidelines
- ADA compliance
- DVIT performs annual park review

## Administrative Actions

- Parks and Recreation Administration
- Responsible for recreational programs
- Works cooperatively with Public Works
- Social Media





# Stormwater Management & MS-4

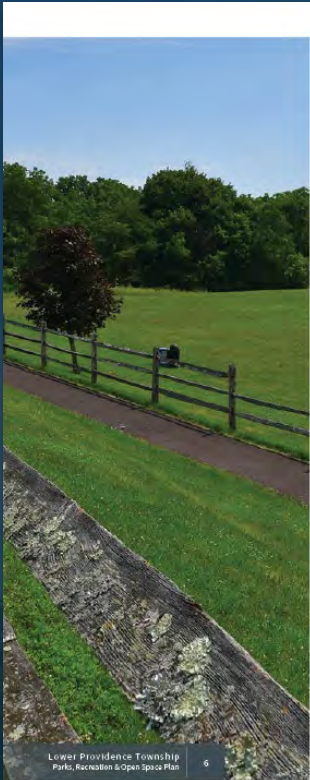
## Skippack Creek Watershed Alliance (SCWA)

- Lower Providence Township is one of several local municipalities in the SCWA.
- SCWA mission is to improve water quality of the Skippack Creek and protect the hydrologic resources in the Skippack Creek Watershed.
- *The participating Alliance municipalities] recognize that the issues associated with the MS4 Permit compliance are too large for any one municipality to effectively address, and have committed to work together in a mutually cooperative and respectful manner to implement BMP Projects to reduce sediment loading to the Skippack Creek.*





# Draft Plan



## Facility Analysis: Redtail Park

Upta sae inte sint expenatua ipsidin niendan digen et lacerfero blaboreur sequis elumquod essimi, nam, sit omnihi incitno corentas doloreferum qui ut rerum facatur? Roreicat faccusanis dem renis volecus, opta sit estem volori omnis ditonsed que volorum ad que esequi natur re volupic lassiu nosum eum nis aut as ad quo tentur? Quisciate et omnis delectae ea doloriosam, es dicit unt, te eum quam, omnis eum quia et et et et est rae re sum fugit peratur? Asim hit aut volupta poresse quidit lia voluptati dolut ma sam quo oditat.

Omnihit, simpore nulpae enduciat essimol orepel explatest, soloris int remo tem ex eum cus, si occum quam voluptatenim que volores cianimet velibus a pa volupta turioratum eost lis illique nitat velit landemat.

Cum igitisciam quid et laudamendae. Perum at unt no molupit nctur, sequosam, veleniandes

- A** Sidewalk connection to existing Eagleville Rd. sidewalk and ADA connection to parking area.
- B** Shade trees.
- C** Perimeter trail.
- D** Amend soil, plant shade trees.
- E** Improve existing stormwater BMP (limit mowing)
- F** Provide restroom facility.



## Greenways

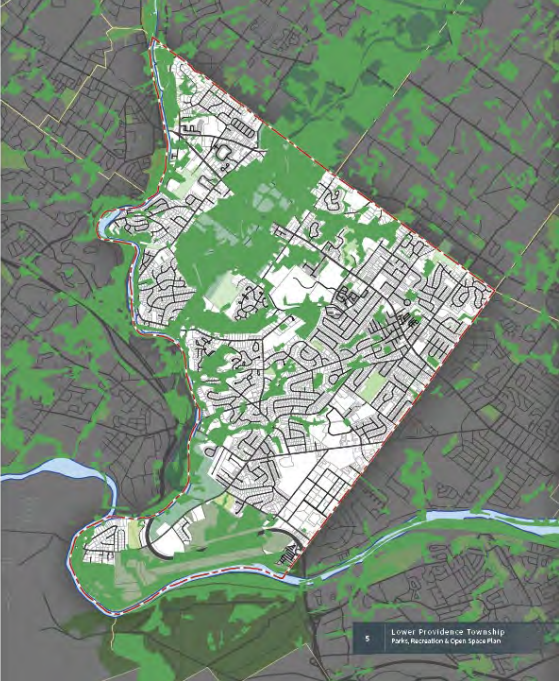
### Protecting Hydrologic Resources in Lower Providence Township

Denia possimum dolupti onsequi bla anis quoditis aut omnihi etate renque sandae labo. Ut omnia venit libusam natior atem ut am doluptibus rectotiae de lure veniem tur repror sedic tectores eum, sime venis eum essum erchit quo doloribus etum que poreum volo idebis volenis aria cos nis ditis eadem quo odio woci id mod pro bla comiam quispeid spenda musam, sapero dloptatur sitae. Inihicac nenquilectis dolente ad etur sed modia quam volo quodit fuga. Nam hicpis pero estrumquas adi inctur? Faccaborem voluptas dignisto quiae nonsequam abo. Tem utet fuga. Rest es doloria tuscipusunt.

Upta sae inte sint expenatua ipsidin niendan digen et lacerfero blaboreur sequis elumquod essimi, nam, sit omnihi incitno corentas doloreferum qui ut rerum facatur? Roreicat faccusanis dem renis volecus, opta sit estem volori omnis ditonsed que volorum ad que esequi natur re volupic lassiu nosum eum nis aut as ad quo tentur? Quisciate et omnis delectae ea doloriosam, es dicit unt, te eum quam, omnis eum quia et et et et est rae re sum fugit peratur? Asim hit aut volupta poresse quidit lia voluptati dolut ma sam quo oditat.

Omnihit, simpore nulpae enduciat essimol orepel explatest, soloris int remo tem ex eum cus, si occum quam voluptatenim que volores cianimet velibus a pa volupta turioratum eost lis illique nitat velit landemat.

Cum igitisciam quid et laudamendae. Perum at unt no molupit nctur, sequosam, veleniandes



## Existing Conditions

### OpenSpace & Recreation Inventory

Denia possimum dolupti onsequi bla anis quoditis aut omnihi etate renque sandae labo. Ut omnia venit libusam natior atem ut am doluptibus rectotiae de lure veniem tur repror sedic tectores eum, sime venis eum essum erchit quo doloribus etum que poreum volo idebis volenis aria cos nis ditis eadem quo odio woci id mod pro bla comiam quispeid spenda musam, sapero dloptatur sitae. Inihicac nenquilectis dolente ad etur sed modia quam volo quodit fuga. Nam hicpis pero estrumquas adi inctur? Faccaborem voluptas dignisto quiae nonsequam abo. Tem utet fuga. Rest es doloria tuscipusunt.

Upta sae inte sint expenatua ipsidin niendan digen et lacerfero blaboreur sequis elumquod essimi, nam, sit omnihi incitno corentas doloreferum qui ut rerum facatur? Roreicat faccusanis dem renis volecus, opta sit estem volori omnis ditonsed que volorum ad que esequi natur re volupic lassiu nosum eum nis aut as ad quo tentur? Quisciate et omnis delectae ea doloriosam, es dicit unt, te eum quam, omnis eum quia et et et et est rae re sum fugit peratur? Asim hit aut volupta poresse quidit lia voluptati dolut ma sam quo oditat.

Omnihit, simpore nulpae enduciat essimol orepel explatest, soloris int remo tem ex eum cus, si occum quam voluptatenim que volores cianimet velibus a pa volupta turioratum eost lis illique nitat velit landemat.

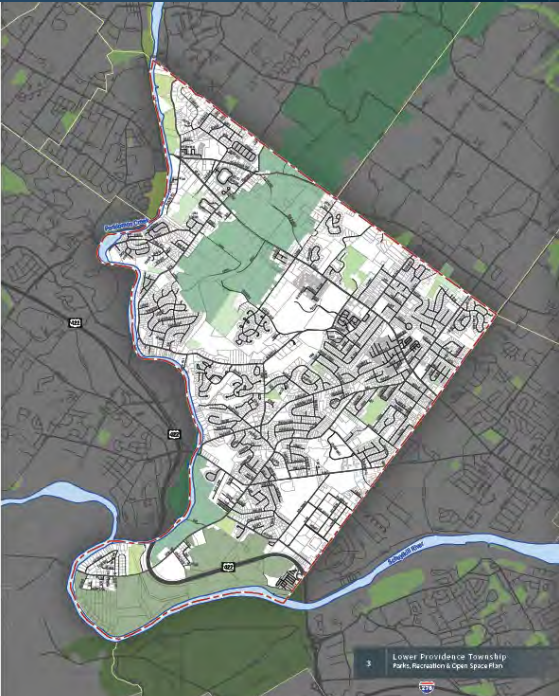
Edit, sundus ipsania simus reipratus strumiqui audam quodi nobis pores ut di quos et officid usandanto dolecta tunibustrum dloptam volorenis estrum quam niss.

Ilitem expedicia ipitatos uliorat emolor aimo torum eat aceaqui nullabor maxmagnis pa veliquis ex et doloremi voluptia conesequat.

Optis ad qui con paribusdae eanion coneeae ribus, uelicta seque plaborepuda vel ipsam fugit el ipienienda sen delectae autem cus estisunt.

Tem inctur? Quis que odit as etur?

Cum igitisciam quid et laudamendae. Perum at unt no molupit nctur, sequosam, veleniandes





# Next Steps

- **Public Meeting 3 (with Board of Supervisors) :**

Thursday, April 15, 2021 7:00 PM-9:00 PM

Public Opinion Survey

<https://www.surveymonkey.com/r/LowerProvidenceParks>



- Wikimapping

[wikimapping.com/Lower-Providence.html](http://wikimapping.com/Lower-Providence.html)

	Meeting Title	Meeting Date
<b>2020</b>	Open Space Committee Meeting #1	Wednesday, August 12th
	Open Space Committee Meeting #2	Thursday, Sept 10
	Public Meeting #1	Monday, October 26
	Open Space Committee Meeting #3	Wednesday, November 18
	Focus Group Meeting #1 - Active Sports	Late November
	Focus Group Meeting #2 - Passive Activities	Late November
	Focus Group Meeting #3 - Senior Activities	Early December
	Focus Group Meeting #4- Cultural, Arts, Religious	Early December
<b>2021</b>	Open Space Committee Meeting #4	Wednesday, January 6
	Public Meeting #2	Tuesday, January 26
	Open Space Committee Meeting #5	Wednesday, February 3
	Open Space Committee Meeting #6	Thursday, March 25
	Key Person Interviews (12)	Dates TBD
	Web Based Survey - write and administer	Oct 1 through April 1
	Wiki - Mapping interactive community mapping	Oct 1 through April 1
	Public Meeting #3 with Board of Supervisors	Thursday, April 15
	Open Space Committee Meeting #7	Tuesday June 1
	Public Meeting #4	Thursday, June 24



# Next Steps

Lower Providence Township is working on a Parks, Recreation & Open Space Plan and would like to know where you want to see open space and recreation improvements.

## 3 WAYS TO GET INVOLVED:

- ### Attend a Meeting

Let your voice be heard. At public meetings we'll discuss the Lower Providence Township Parks, Recreation & Open Space Plan, review progress, and get your feedback. Meetings will be held virtually unless otherwise noted.

  - Public Meeting #1 will take place Monday September 28, 2020 at 7:00pm  
Join at: <https://tinyurl.com/lowerprovidence1>
  - Public Meeting #2 will take place Tuesday January 26, 2021 at 7:00pm  
Join at: <https://tinyurl.com/lowerprovidence2>
  - Public Meeting #3 will take place Thursday April 15, 2021 at 7:00pm  
Join at: <https://tinyurl.com/lowerprovidence3>
  - Public Meeting #4 will take place Thursday June 24, 2021 at 7:00pm  
Join at: <https://tinyurl.com/lowerprovidence4>

After joining on the Teams app or website and signing in, you will enter the meeting. For information on accessing the meeting, go to <https://tinyurl.com/lowerprovidenceparks>
- ### Take the Survey

Obtaining feedback from the community is vital to the planning process. We want to know your opinions on how to improve open space & recreation in Lower Providence. The survey can be completed at the web address below. Hard copies of the survey may be picked up and returned completed to the Lower Providence Administration Building, 100 Parklane Dr, Eagleville, PA 19403

[surveymonkey.com/r/LowerProvidenceParks](https://surveymonkey.com/r/LowerProvidenceParks)
- ### Comment on WikiMapping

Place comments directly on the easy to use digital map of Lower Providence. Let us know existing & favorite trails, challenging intersections & roadways, important destinations, and desired park and open space improvements.

[wikimapping.com/Lower-Providence.html](https://wikimapping.com/Lower-Providence.html)

Thursday April 15, 2021: Public Meeting 3 Link:  
<https://tinyurl.com/lowerprovidence3>

	Meeting Title	Meeting Date
2020	Open Space Committee Meeting #1	Wednesday, August 12th
	Open Space Committee Meeting #2	Thursday, Sept 10
	Public Meeting #1	Monday, October 26
	Open Space Committee Meeting #3	Wednesday, November 18
	Focus Group Meeting #1 - Active Sports	Late November
	Focus Group Meeting #2 - Passive Activities	Late November
	Focus Group Meeting #3 - Senior Activities	Early December
	Focus Group Meeting #4- Cultural, Arts, Religious	Early December
2021	Open Space Committee Meeting #4	Wednesday, January 6
	Public Meeting #2	Tuesday, January 26
	Open Space Committee Meeting #5	Wednesday, February 3
	Open Space Committee Meeting #6	Thursday, March 25
	Key Person Interviews (12)	Dates TBD
	Web Based Survey - write and administer	Oct 1 through April 1
	Wiki - Mapping interactive community mapping	Oct 1 through April 1
	Public Meeting #3 with Board of Supervisors	Thursday, April 15
	Open Space Committee Meeting #7	Tuesday June 1
	Public Meeting #4	Thursday, June 24

## Public Involvement Poster



# Thank You

## Contact Information:

SIMONE COLLINS LANDSCAPE ARCHITECTURE - 610.239.7601

**Peter Simone, RLA, FASLA, Principal**

[psimone@simonecollins.com](mailto:psimone@simonecollins.com)

**Pankaj Jobanputra, AICP, Project Manager**

[pjobanputra@simonecollins.com](mailto:pjobanputra@simonecollins.com)

**Geoff Creary, Land. Arch., Connectivity Expert / Graphics**

[gcreary@simonecollins.com](mailto:gcreary@simonecollins.com)

**Joseph Wallace, Staff Landscape Architect**

[jwallace@simonecollins.com](mailto:jwallace@simonecollins.com)

**Michelle Armour, Staff Landscape Architect**

[marmour@simonecollins.com](mailto:marmour@simonecollins.com)





# Discussion/ Comments / Questions

## Next Steps for Project Team

- Draft Plan

### Next Public Meeting:

Thursday April 15, 2021: Public Meeting 3 Link:

<https://tinyurl.com/lowerprovidence3>

