



# Parks, Recreation & Open Space Plan

## Committee Meeting 4 – January 6, 2021





# Agenda

- Introductions
- Updated Survey & Wikimapping Results
- 'Official Map' Review
- Stormwater Best Management Practices (BMPs) & Greenways
- Projected Future Facility Needs & Open Space / Recreation Parcels for Acquisition
- Facilities Analysis
- Conceptual Trails Review
- Sidewalk Gaps
- Budget, Maintenance & Programming
- Key Person Interviews
- Next Steps





# Open Space Committee

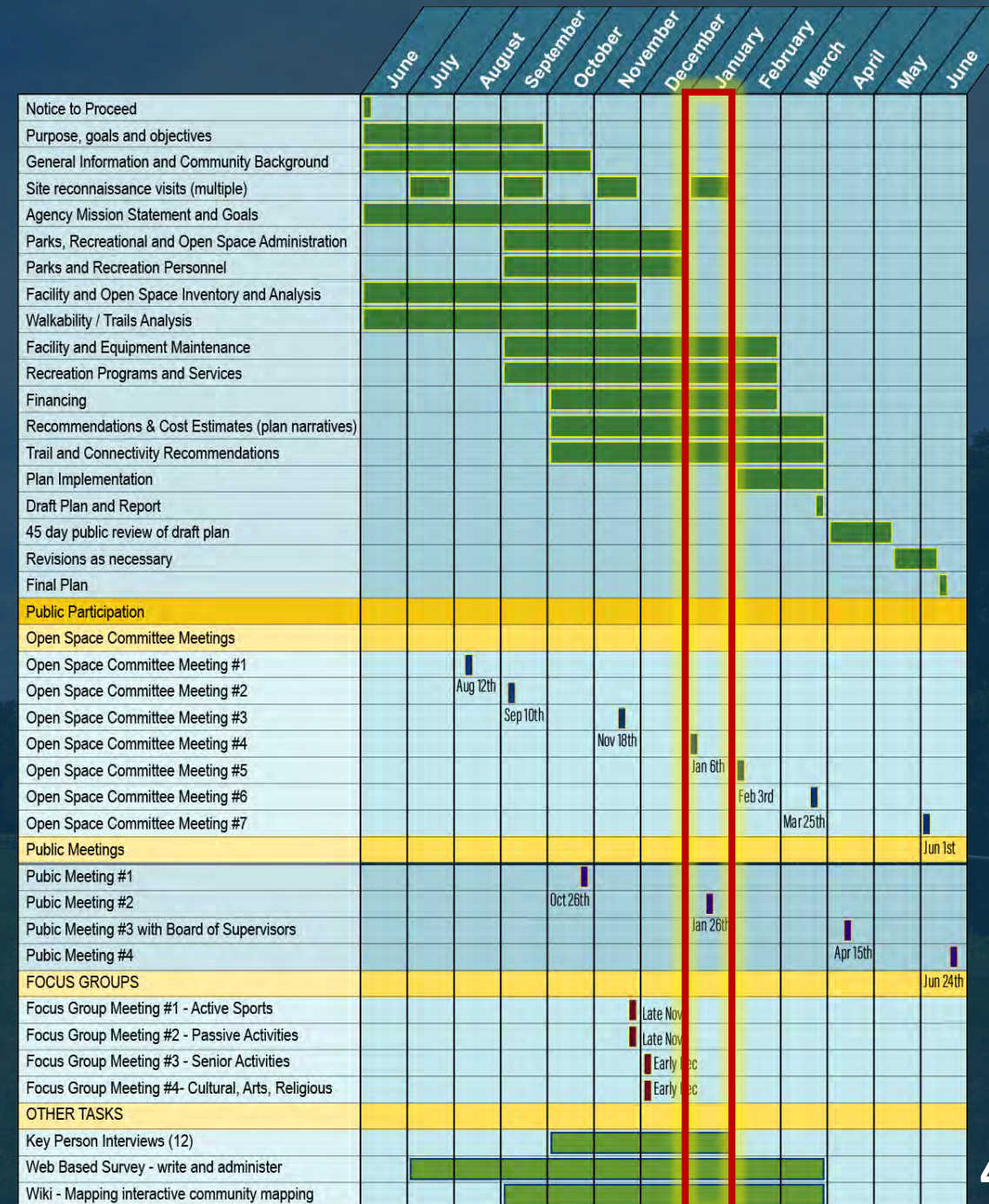
- Colleen Eckman - Supervisor
- Jean Akers - Chair for Open Space Committee and member of Park Board Committee
- Susan LaPenta – Township Planning Commission
- Bill Brooke – Township Planning Commission
- Erin DiPaolo - Township Park Board Committee
- Beth Ann Mazza – Township Park Board Committee
- Katherine McGrath- Township Park Board Committee – Student Representative
- Jane Delaney – Parks and Recreation Director
- Donald Delamater- Township Manager





# Project Schedule

	Meeting Title	Meeting Date
<b>2020</b>	Open Space Committee Meeting #1	Wednesday, August 12th
	Open Space Committee Meeting #2	Thursday, Sept 10
	Public Meeting #1	Monday, October 26
	Open Space Committee Meeting #3	Wednesday, November 18
	Focus Group Meeting #1 - Active Sports	Late November
	Focus Group Meeting #2 - Passive Activities	Late November
	Focus Group Meeting #3 - Senior Activities	Early December
	Focus Group Meeting #4- Cultural, Arts, Religious	Early December
<b>2021</b>	Open Space Committee Meeting #4	Wednesday, January 6
	Public Meeting #2	Tuesday, January 26
	Open Space Committee Meeting #5	Wednesday, February 3
	Open Space Committee Meeting #6	Thursday, March 25
	Key Person Interviews (12)	Dates TBD
	Web Based Survey - write and administer	Oct 1 through April 1
	Wiki - Mapping interactive community mapping	Oct 1 through April 1
	Public Meeting #3 with Board of Supervisors	Thursday, April 15
	Open Space Committee Meeting #7	Tuesday June 1
	Public Meeting #4	Thursday, June 24

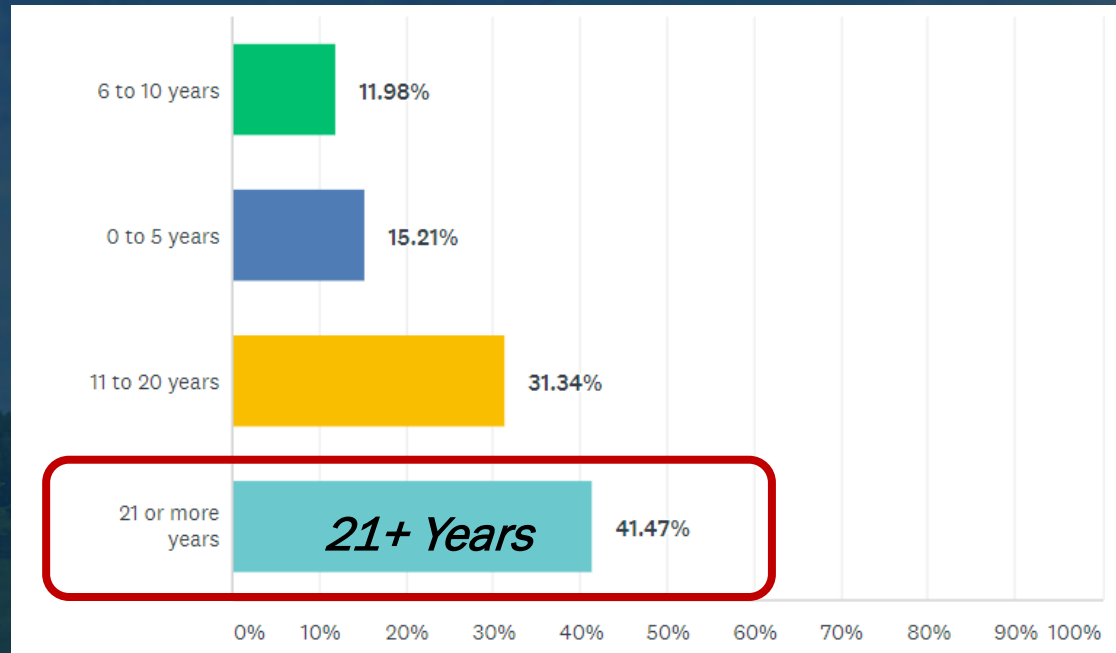




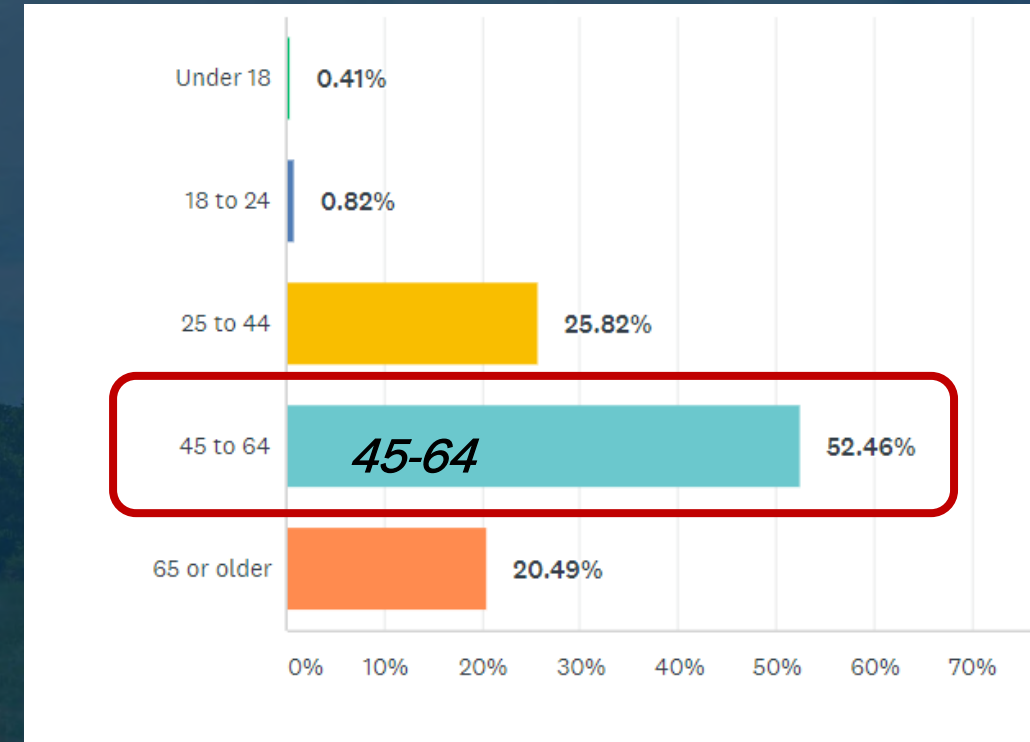
# Public Survey Preliminary Results

257 completed surveys as of January 6, 2021

*How long have you lived in Lower Providence Township?*



*What is your age?*



<https://www.surveymonkey.com/r/LowerProvidenceParks>

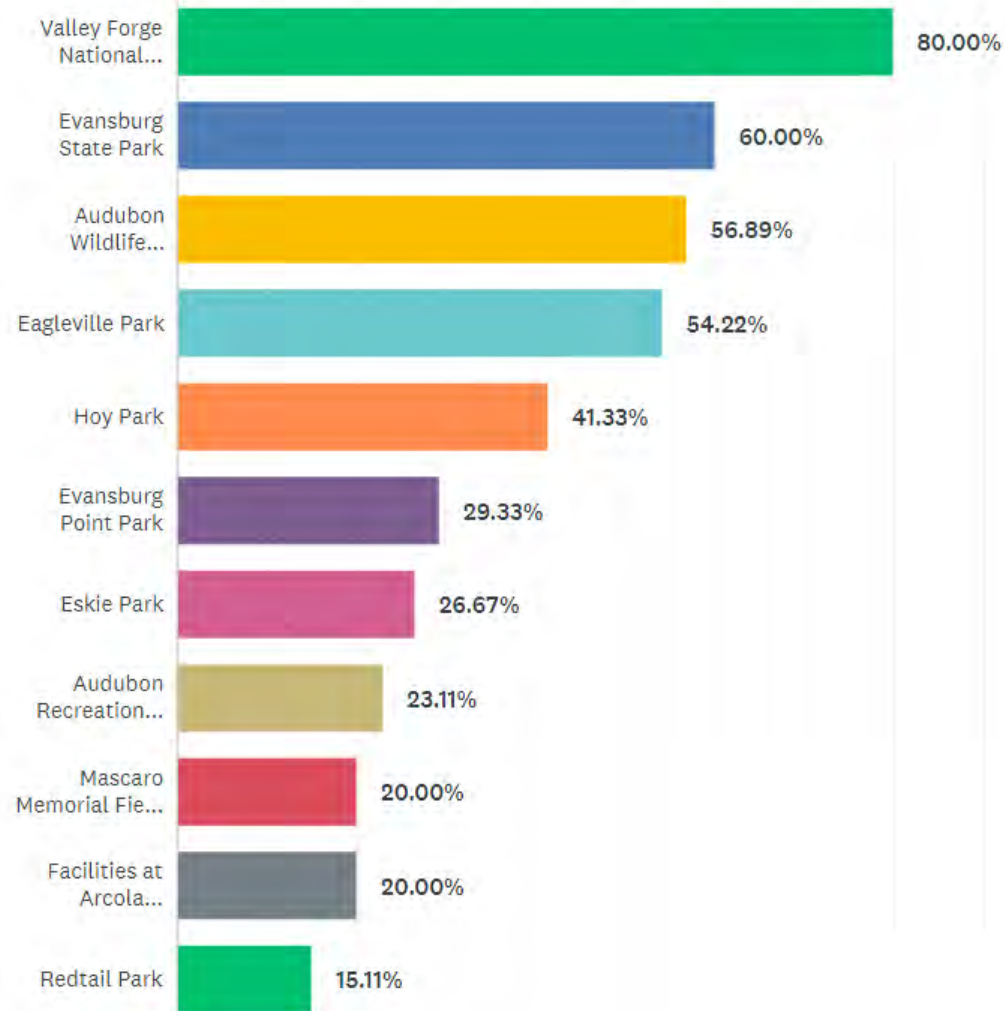




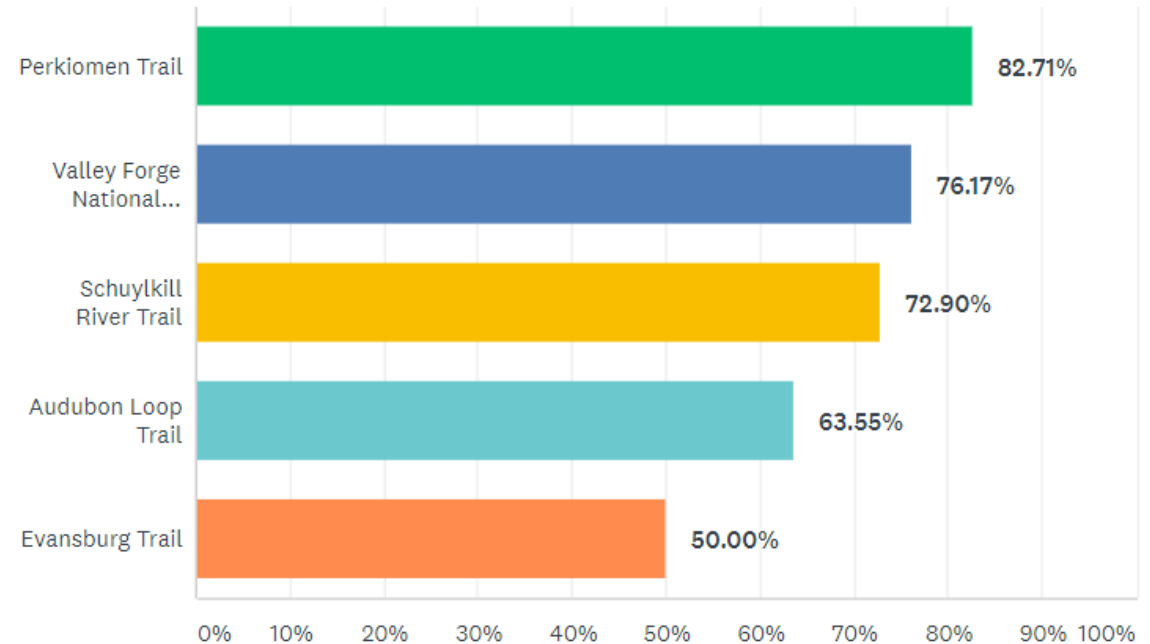
# Public Survey Preliminary Results

257 completed surveys as of January 6, 2021

Which parks, natural areas, trails, or facilities do you visit for recreation purposes? (Please check all that apply)



If you do use area trails, which ones do you use?





# WikiMapping Preliminary Results

75 WikiMap comments made as of January 6, 2021

- Comment Breakdown / Locations Delineated:

Barriers to Connectivity: 5

Sidewalk Gap: 6

Desired Park Location: 5

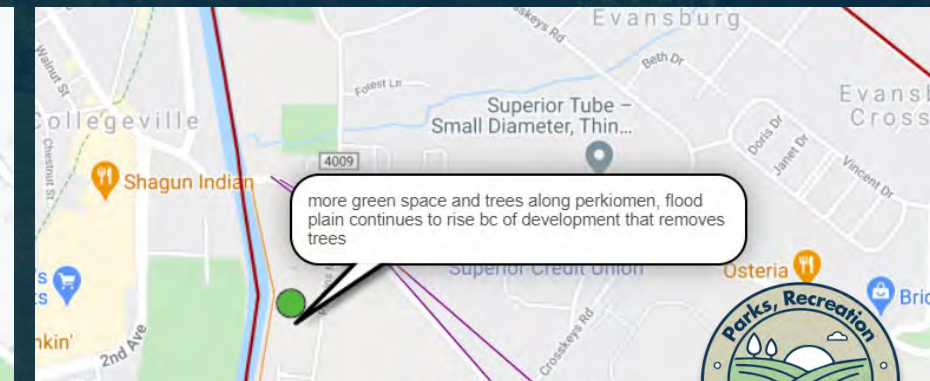
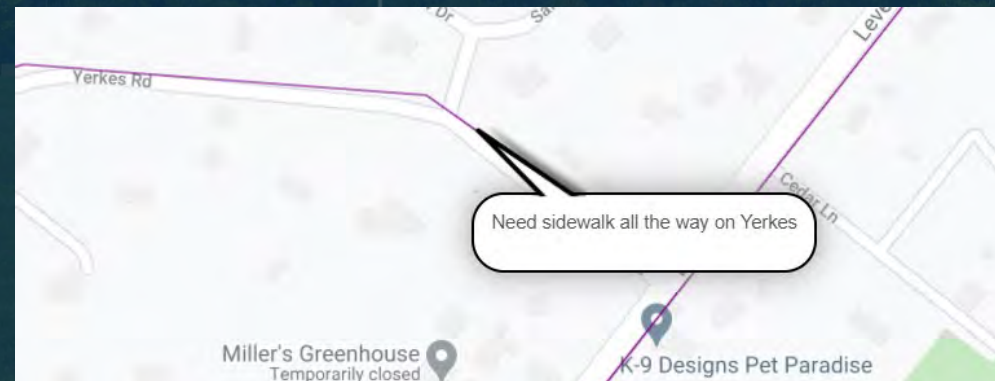
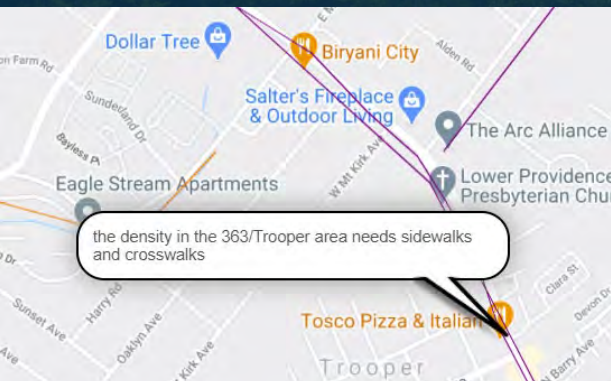
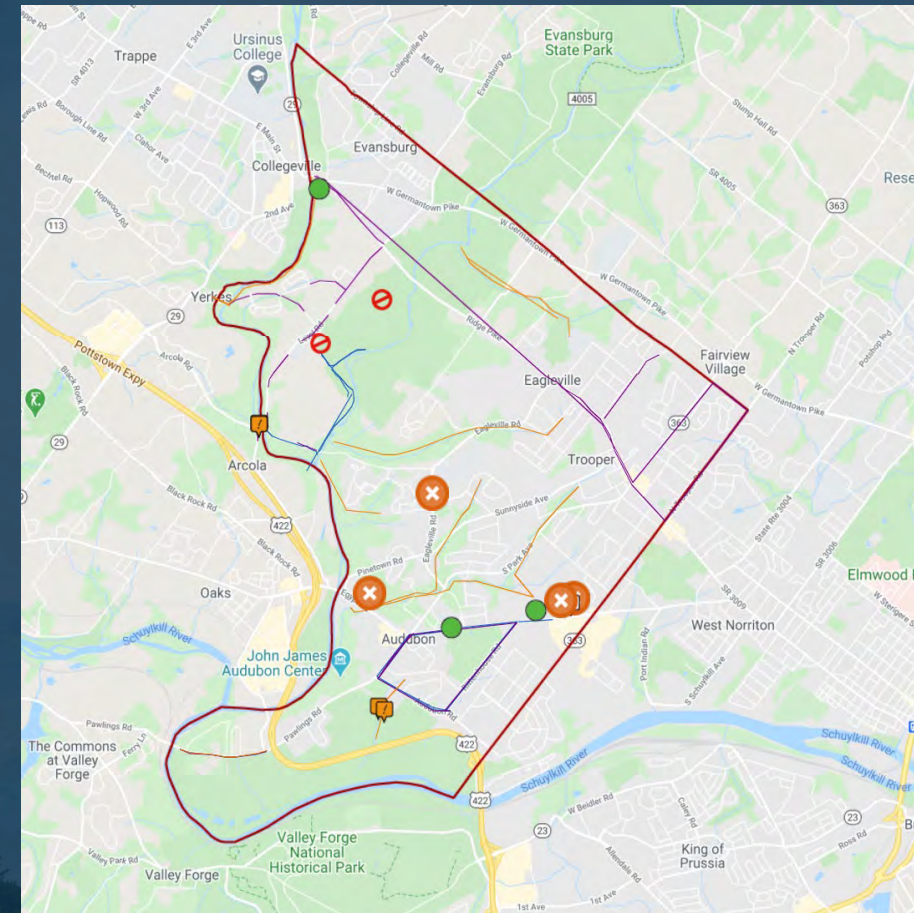
Challenging Pedestrian / Bike Area: 6

Desired Crosswalk : 7

Desired Bike Route: 11

Desired Trail: 13

Desired Sidewalk: 22





# What is an Official Map?

- As permitted by the PA Municipal Planning Code, the Official Map is a combined map and ordinance designed to implement the goals and community vision set forth in the Comprehensive Plan.
- The Official Map shows the locations of planned future public lands and facilities such as **transportation, recreational parks and trails, and open space.**
- The Official Map expresses a municipality's interest in acquiring these lands for public purposes at some future time.

— PENNSYLVANIA. BUILT TO ADVANCE. —



## Pennsylvania Municipalities Planning Code

Act of 1968, P.L.805, No.247 as reenacted and amended



PA pennsylvania  
GOVERNOR'S CENTER FOR  
LOCAL GOVERNMENT SERVICES





# Official Map - Elements

The map may include but need not be limited to:

- Existing and proposed public streets, watercourses and public grounds, including widenings, narrowings, extensions, reductions, openings or closing of same.
- Existing and proposed **public parks, playgrounds and open space** reservations
- Existing and proposed **pedestrian ways (trails) and easements**
- Flood control areas, **floodways and floodplains, stormwater management areas** and drainage easements.





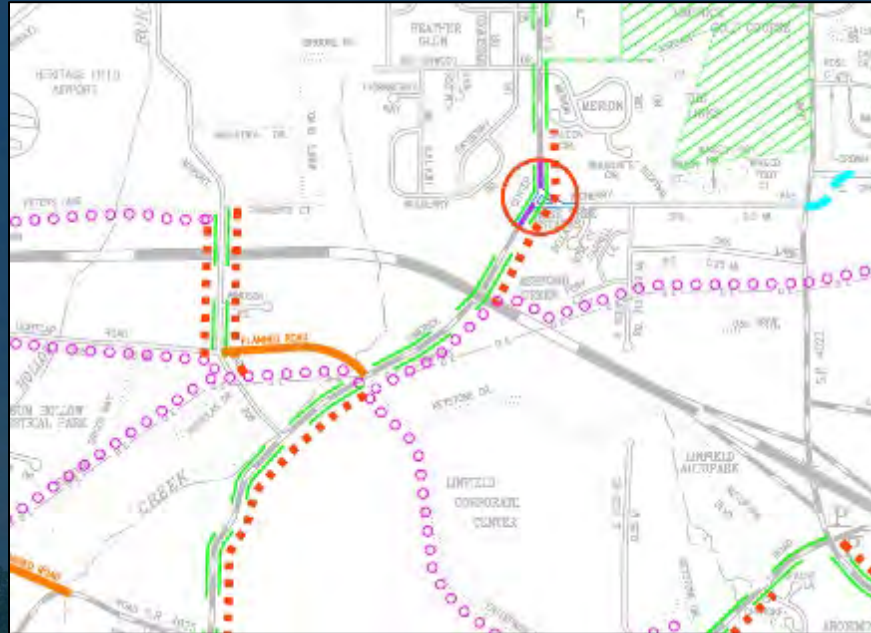
# Official Map - Benefits

- Helps to focus limited financial resources on projects that meet and advance community goals.
- Helps to make improvements such as the street network improvements, **intersection improvements, protecting natural areas, providing more green space, recreation facilities, trails, and sidewalks.**
- Saves time and money by **informing property owners and developers of municipal goals and intentions** in advance of land development plans.
- **Effective negotiation tool for municipalities**, helping to ensure development is compatible with and supportive of public goals.
- Gives municipalities advantage in **securing grants.**



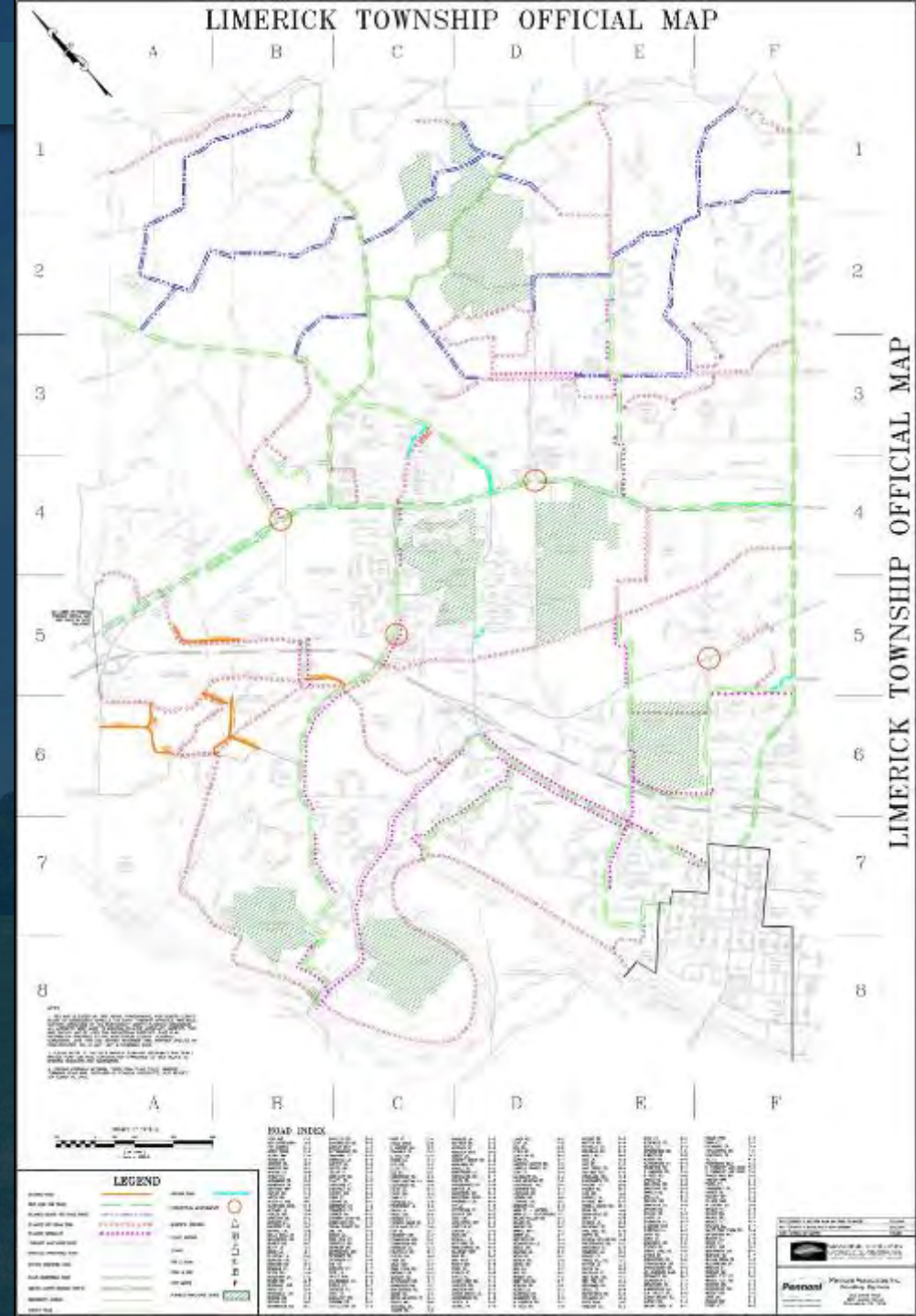


# Official Map – Example (Limerick Township)



## LEGEND

PLANNED ROAD		REGIONAL ROAD	
BIKE LANE (ON ROAD)		INTERSECTION IMPROVEMENTS	
PLANNED SHARE-THE-ROAD ROUTE		MUNICIPAL BUILDING	
PLANNED OFF-ROAD TRAIL		POLICE STATION	
PLANNED SIDEWALKS		SCHOOL	
TOWNSHIP MAINTAINED ROAD		FIRE STATION	
PRIVATELY MAINTAINED ROAD		PARK & RECREATION	
UTILITY DEDICATED ROAD		POST OFFICE	
STATE MAINTAINED ROAD		PLANNED PARK/OPEN SPACE	
LIMITED ACCESS HIGHWAY (STATE)			
EMERGENCY ACCESS			
COUNTY ROAD			





# Stormwater Best Management Practices

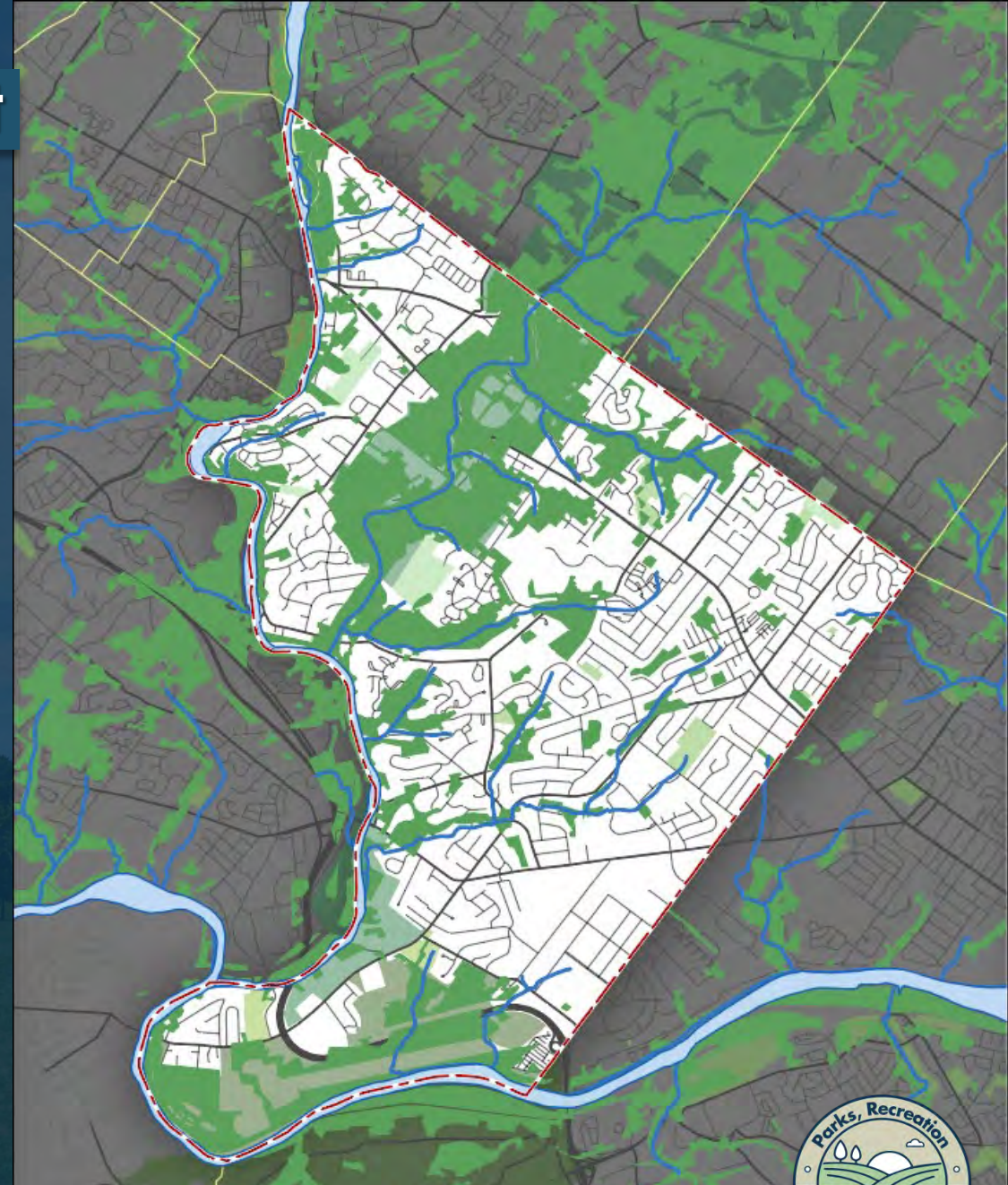
- Stormwater Best Management Practices (BMPs) BMPs are structural or vegetative or practices which can treat, prevent or reduce water pollution by capturing stormwater runoff prior to reaching hydrologic resources.
- Examples:
  - Wetlands
  - Vegetated Swales
  - Riparian Buffers / Pond buffers
  - Green roof systems
  - Greenway Corridors





# Greenways & Stormwater Management

- Greenways are corridors of land that generally parallel creeks and streams.
- The primary purpose to designate a “Greenway”:
  - Foster the preservation and protection of critical habitats
  - Protect and enhance the water quality
  - Greenways may or may not contain a trail or allow access
- In Lower Providence Township they are protected under ARTICLE XXXIV (Riparian Buffer Overlay Zone) This ordinance regulates land use to ensure natural resources are preserved and protected.





# Projected Facility Needs - Community Benchmarking

**Lower Providence Township** – 2040 Population Projection: 28,448

Benchmarked communities' current populations were compared to Lower Providence future projected population.

## **Benchmarked Communities:**

- Upper Merion Township, Montgomery County– *Population: 33,027*
- Tredyffrin Township, Chester County– *Population: 29,396*
- Radnor Township, Delaware County– *Population: 31,875*
- Lower Makefield Township, Bucks County– *Population: 32,802*
- Cranberry Township, Butler County– *Population: 31,632*
- York Township, York County– *Population: 28,776*





## Community Benchmarking - Existing Facilities

	Lower Providence Township	Average	Difference from Average	Difference from Maximum
<b>2040 Population Projection (ACS)</b>	28,448	30,851	-2,403	-4,579
Area (Sq. Miles)	15.6	19	-3	-1.6
2040 Pop. Density per Sq. Mile	1,824	1,695	128	684
# of Parks	13	17	-4	-22
Park Area (Acres)	202.582	340	-138	-457.418
<b>Facility</b>				
Baseball / Softball	14	11	3	-1
Basketball	2	6	-4	-9
Biking / Hiking Trail / Walking Track	6	6	0	-10
Football	1	1	0	-2
Multipurpose Field	2	5	-3	-8
Pavilion / Rental Space	5	4	1	-2
Pool	0	1	-1	-5
Tennis	4	7	-3	-12
Bocceball Court	1	1	0	-1
Pickleball Court	0	1	-1	-5
Skate Park	0	0	0	-1
Soccer	1	4	-3	-10
Volleyball	0	3	-3	-10
Playgrounds	7	9	-2	-8
Disc Golf	0	0	0	0
Street Hockey / Ice Skating	0	1	-1	-1
Dog Park	0	1	-1	-1
Amphitheater	1	1	0	0
Community Garden	0	0	0	-1
Recreation Center	0	0	0	-1

Average, Lower Providence & Other Communities





## Community Benchmarking - Existing Facilities

	Lower Providence Township	Average	Difference from Average	Difference from Maximum
<b>2040 Population Projection (ACS)</b>	28,448	30,851	-2,403	-4,579
Area (Sq. Miles)	15.6	19	-3	-1.6
2040 Pop. Density per Sq. Mile	1,824	1,695	128	684
# of Parks	13	17	-4	-22
Park Area (Acres)	202.582	340	-138	-457.418
Facility				
Baseball / Softball	14	11	3	-1
Basketball	2	6	-4	-9
Biking / Hiking Trail / Walking Track	6	6	0	-10
Football	1	1	0	-2
Multipurpose Field	2	5	-3	-8
Pavilion / Rental Space	5	4	1	-2
Pool	0	1	-1	-5
Tennis	4	7	-3	-12
Bocceball Court	1	1	0	-1
Pickleball Court	0	1	-1	-5
Skate Park	0	0	0	-1
Soccer	1	4	-3	-10
Volleyball	0	3	-3	-10
Playgrounds	7	9	-2	-8
Disc Golf	0	0	0	0
Street Hockey / Ice Skating	0	1	-1	-1
Dog Park	0	1	-1	-1
Amphitheater	1	1	0	0
Community Garden	0	0	0	-1
Recreation Center	0	0	0	-1

Projected **2040** recreation facility deficiencies are (If no open space & recreation improvements made):

- (4) Basketball Courts
- (3) Multipurpose Fields
- (1) Pool
- (3) Tennis Courts
- (1) Pickleball Court
- (3) Soccer Fields
- (3) Volleyball Fields
- (2) Playgrounds
- (1) Street Hockey / Ice Skating
- (1) Dog Park

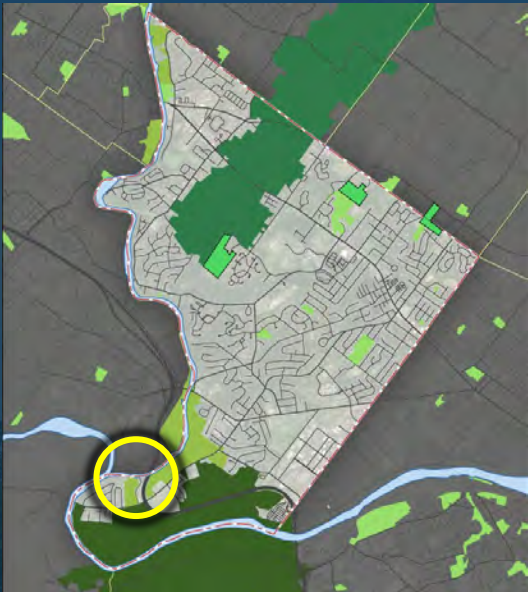
**Where can these facilities be accommodated within Lower Providence Township?**





# Projected Future Facility Needs

## Knights Cricket Field





# Projected Future Facility Needs – (Not A Design, Layout Only for Spatial

## Purposes

### Knights Cricket Field

- (4) Basketball Courts
- (3) Multipurpose Fields
  - (includes cricket)
- (3) Tennis Courts
- (1) Pickleball Court
- (3) Soccer Fields
- (3) Volleyball Fields
- (2) Playgrounds
- (1) Dog Park

**\*Potential restrictions-based size of PECO electrical lines**





# Potential Open Space & Rec Acquisition

- Owner: **KeyBank**
- Size: **27 Acres**
- Characteristics:  
Agricultural fields





# Projected Future Facility Needs – (Not A Design, Layout Only for Spatial Purposes)

## Option A: Agriculture Fields North of Eskie Park

- (4) Basketball Courts
  - (2) Multipurpose Fields
  - (3) Tennis Courts
  - (1) Pickleball Court
  - (3) Volleyball Fields
  - (2) Playgrounds
  - (1) Dog Park
- Perimeter trail can additional 3.3k' feet of trail to Eskie Park system
  - Can be a multi-municipal effort for upper agricultural fields





# Projected Future Facility Needs

## Option B: Preserve Agriculture Fields North of Eskie Park

- Lower Providence Township has minimal preserved agricultural lands, in this option LP can purchase and permanently preserve this agriculture area

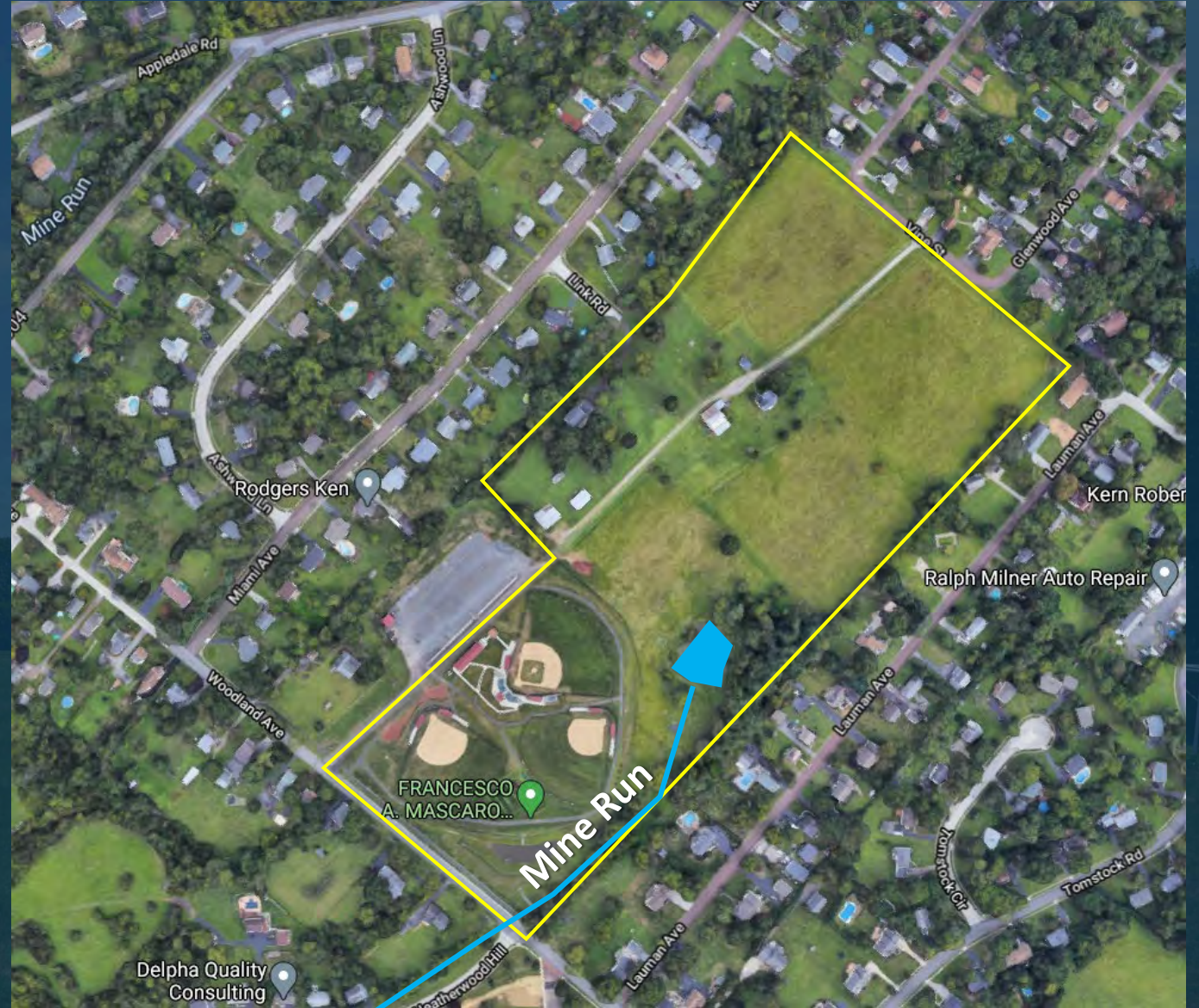




# Projected Future Facility Needs

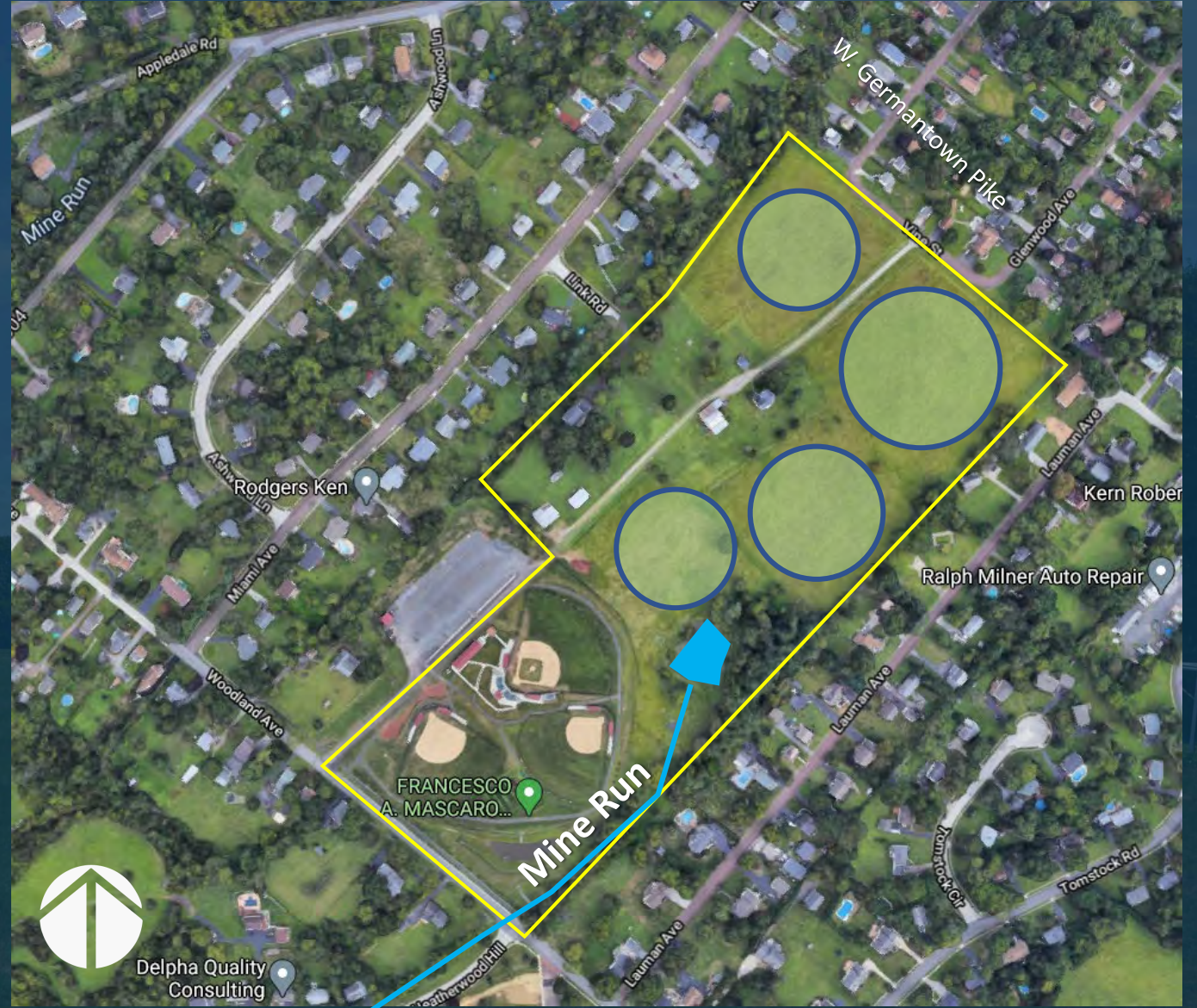
## Open Space North of Mascaro Field

- Owner: MB Investments
- Opportunity for:
  - Native & songbird meadows
  - Stormwater BMPs – to protect Mine Run which is adjacent to site (tributary of Perkiomen)





# Projected Future Facility Needs – (Not A Design, Layout Only for Spatial Purposes)





# Potential Open Space & Rec Acquisition

- Owner: **St. Gabriels Property (Philadelphia Protectory For Boys)**
- Size: **46.5 Acres**





# Potential Open Space & Rec Acquisition

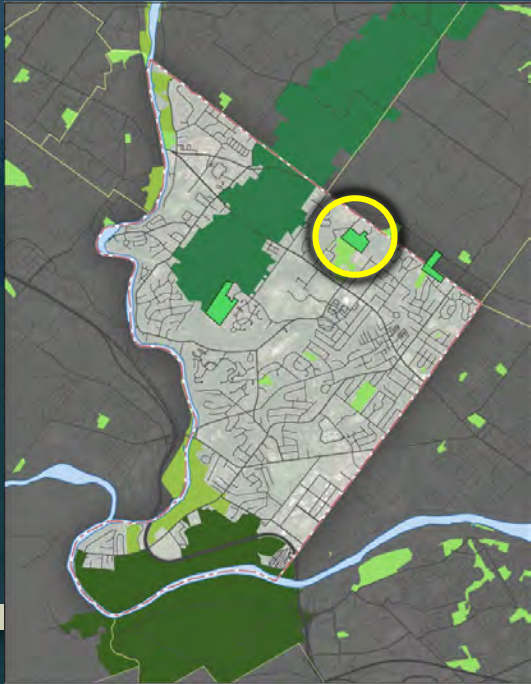
- Owner: **St. Gabriels Property (Philadelphia Protectory For Boys)**
- Size: **46.5 Acres**
- Potentially use St. Gabriels land (not building) to connect Audubon Center to Valley Forge & protect landscape
- Acquisition can connect ballfields and underutilized portion of Valley Forge Park
- Local, County, & Federal Project
- Could be potential application for future official map – designate fields as open space





# Potential Open Space & Rec Acquisition

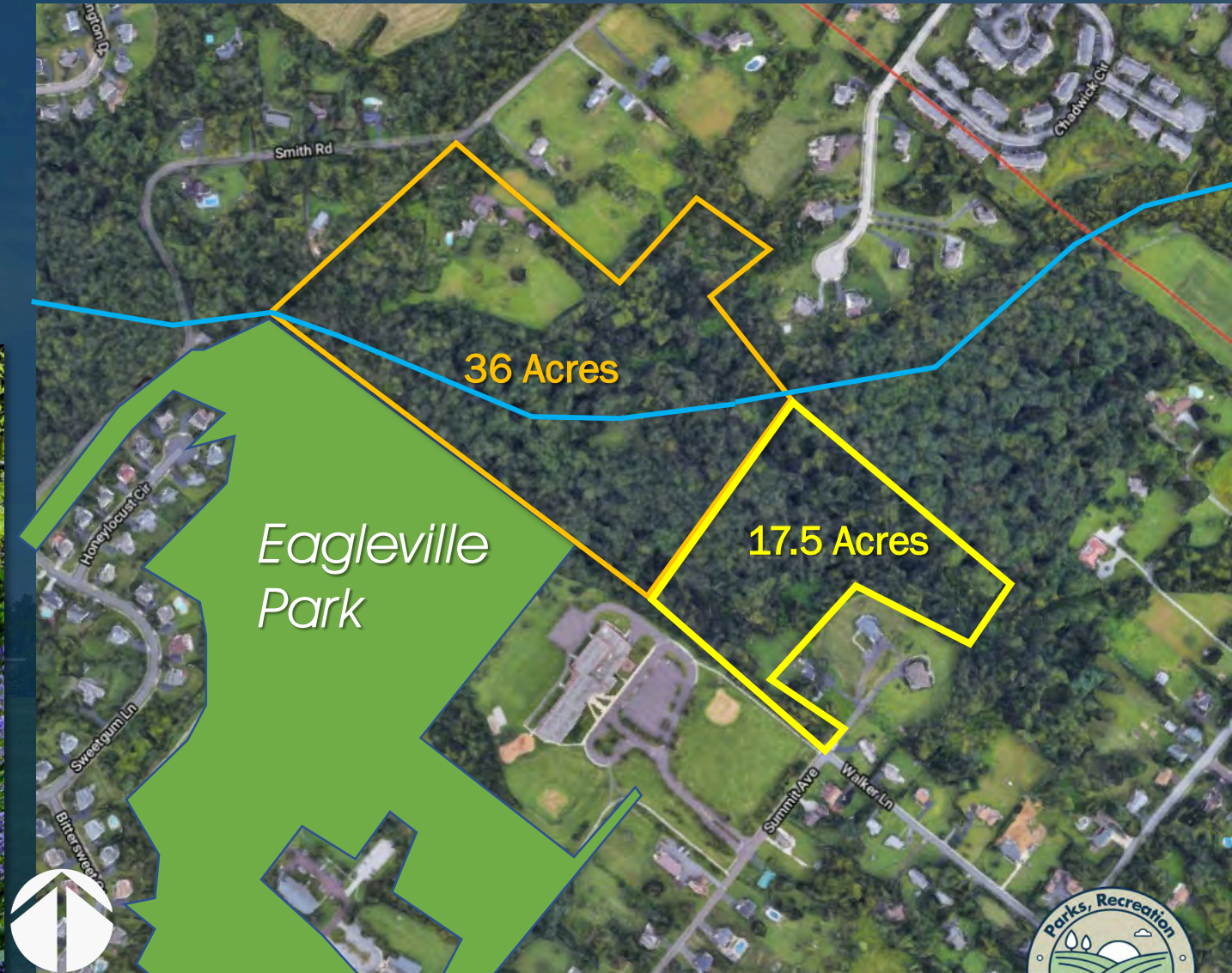
- Owner: **J. Heyser; BooBoo Realty**
- Size: **36 Acres; 17.5 Acres**
- Characteristics: Wooded / dense vegetation
- Contains tributary to Skippack Creek





# Potential Open Space & Rec Acquisition

- Low-impact earth trails,
- Educational interpretation
- Forested / stormwater BMPs





# Facilities Analysis

- Existing Conditions: **Redtail Park**





# Facilities Analysis (1 example)

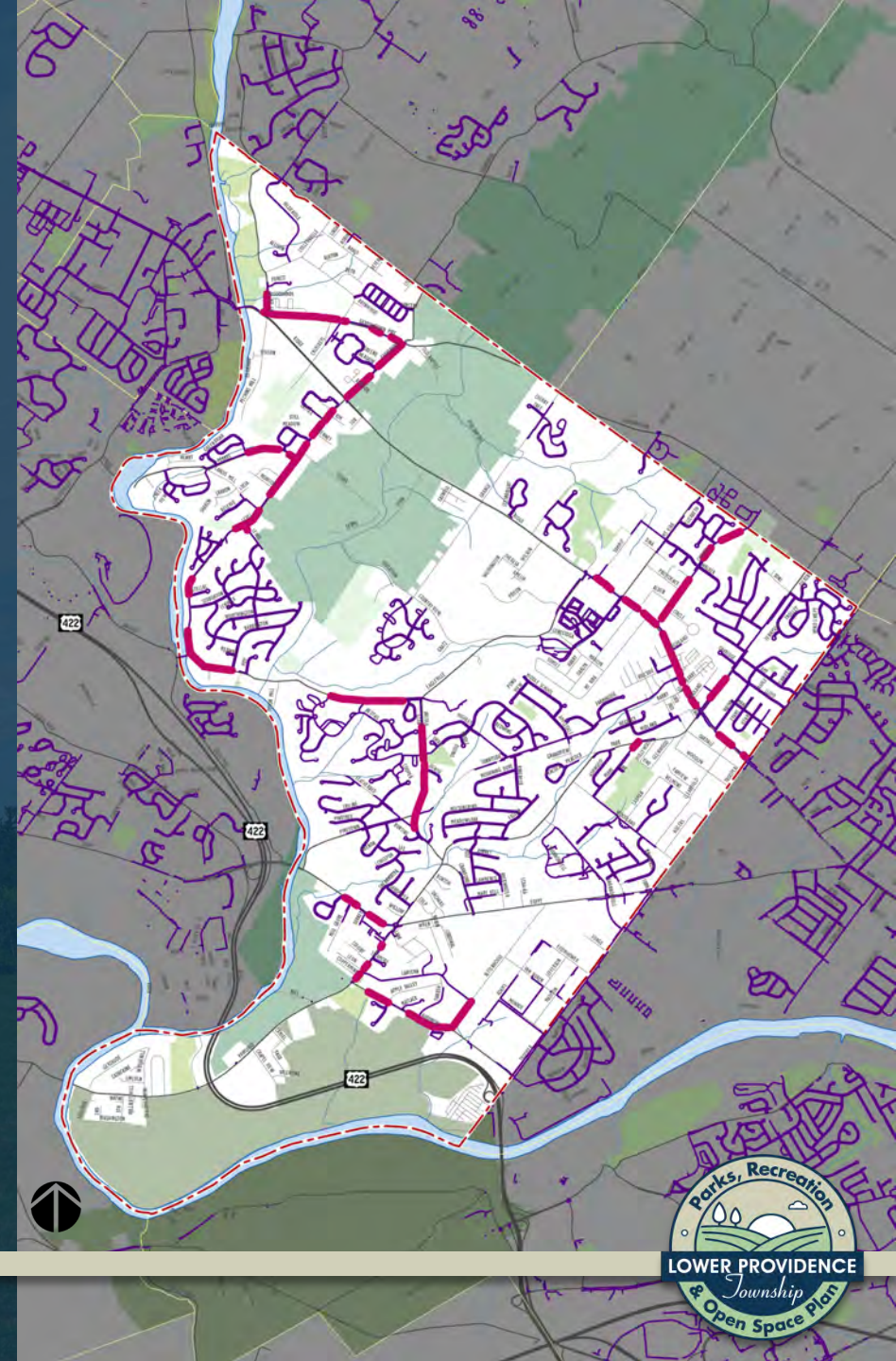
- Conceptual Facility Improvements: **Redtail Park**
- Facilities recommendations in-progress for each Lower Providence park & open space resource





# Sidewalk Gaps

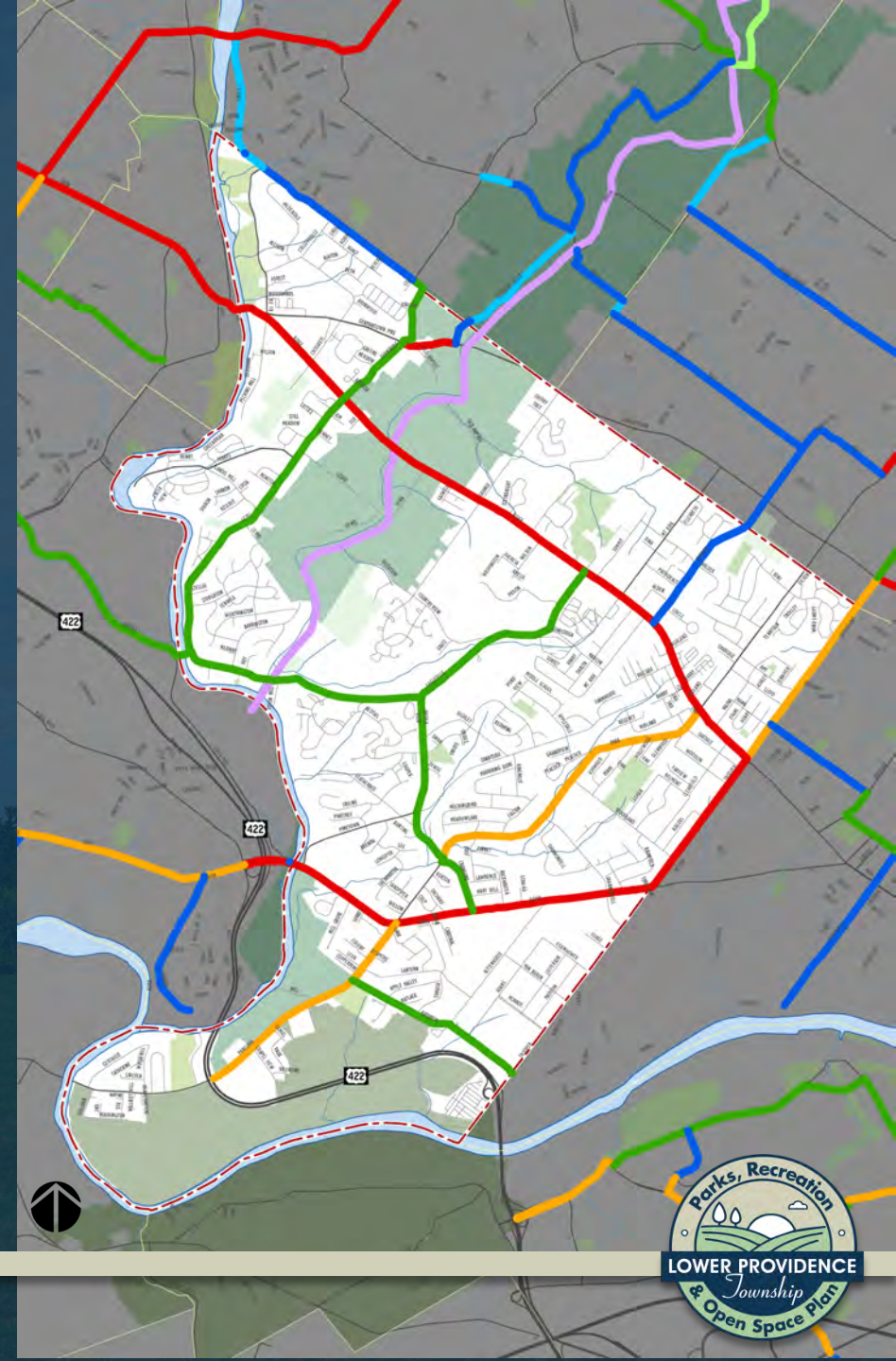
— Existing Sidewalk  
— Sidewalk Gap





# Conceptual Trail Connections

- Bike Montco Routes

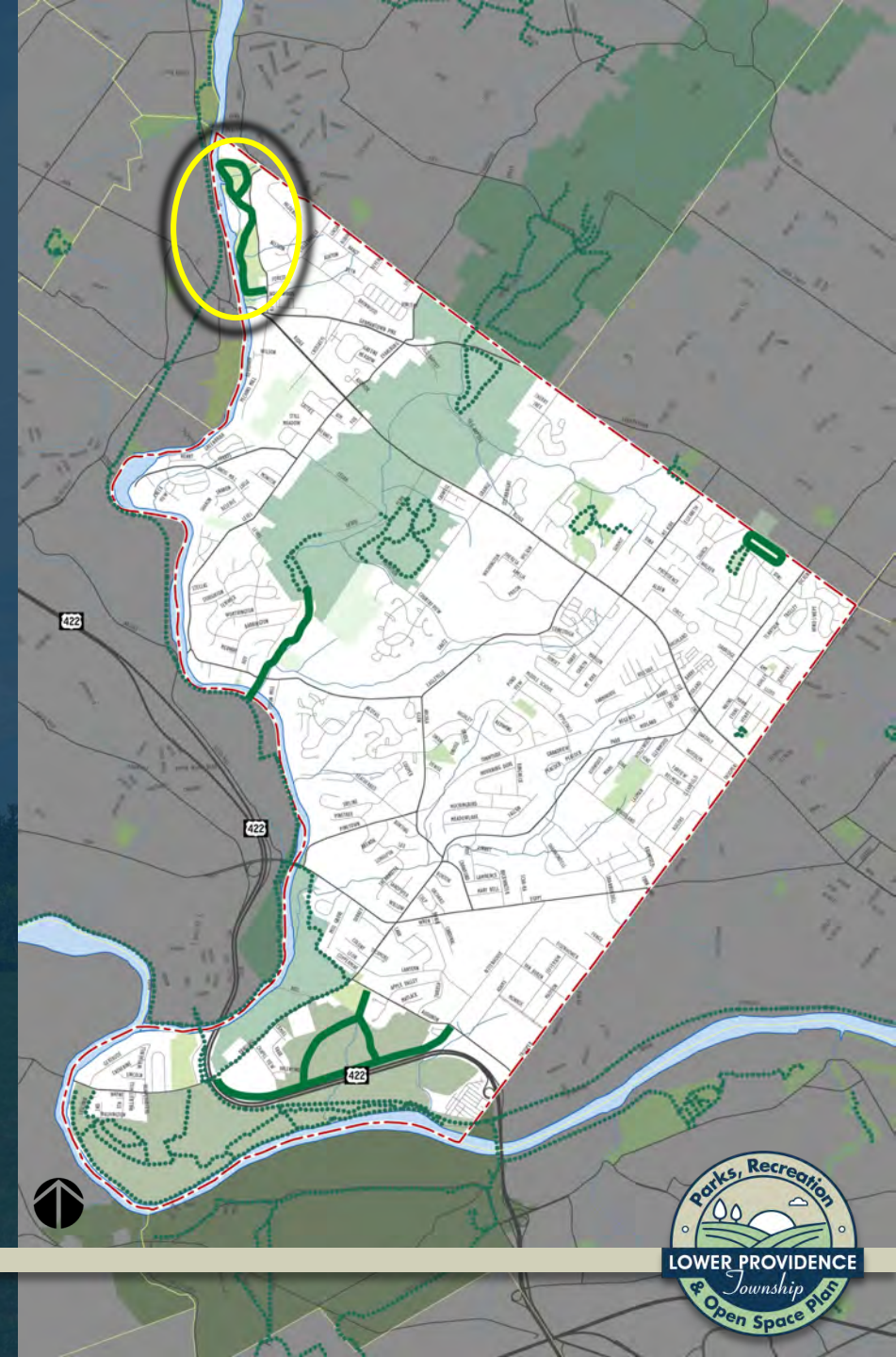
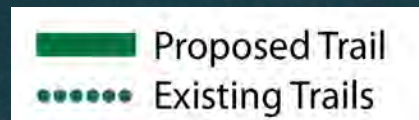




# Conceptual Trail Connections

## Proposed Trails

- Central Perkiomen Valley Park
- Evansburg State Park Connector
- Eskie Park Loop Trail Extension
- Valley Forge National Park Connector

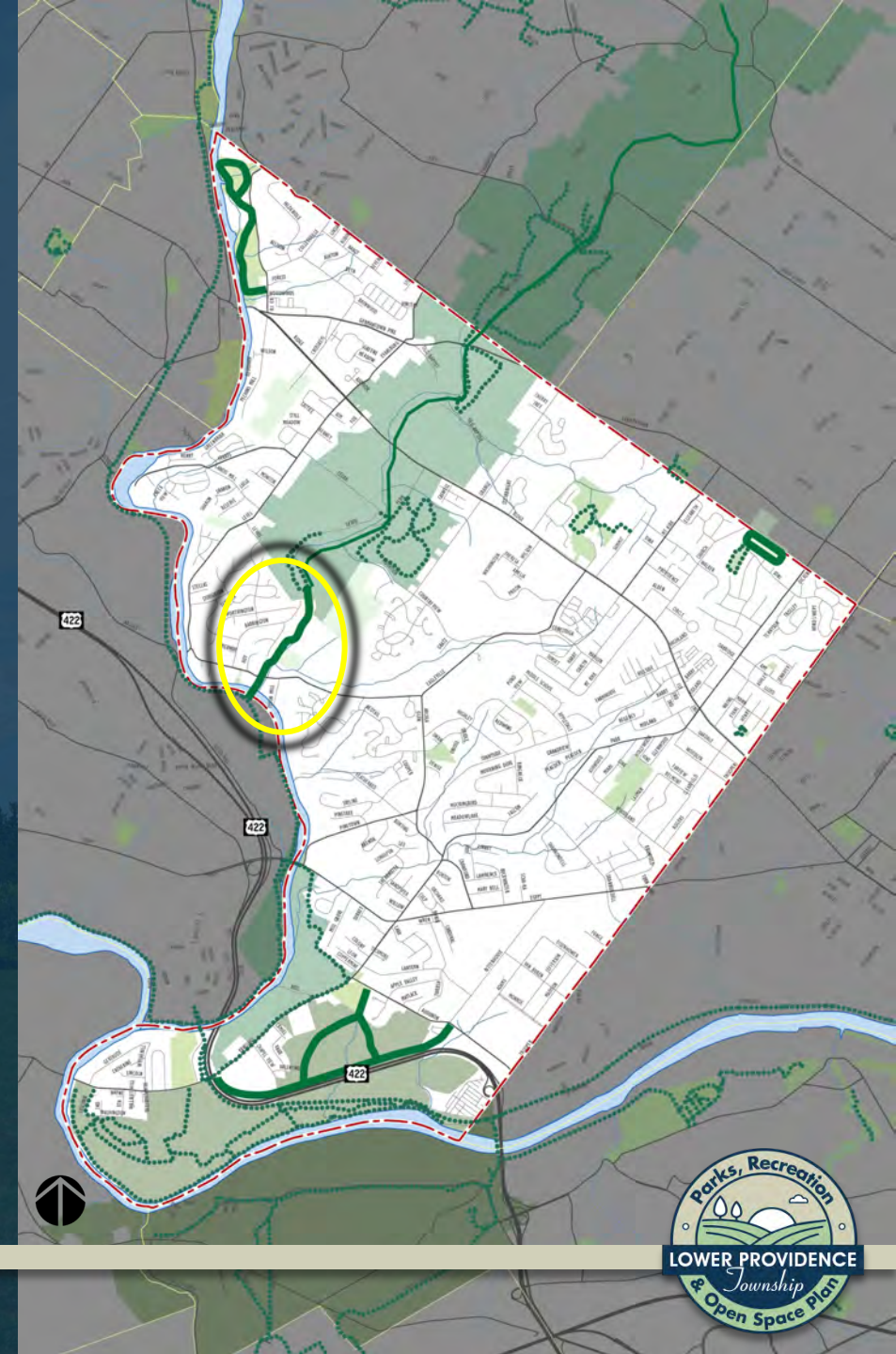
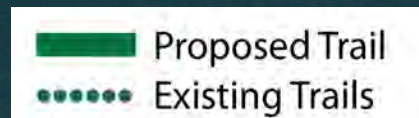




# Conceptual Trail Connections

## Proposed Trails

- Central Perkiomen Valley Park
- **Evansburg State Park Connector**
- Eskie Park Loop Trail Extension
- Valley Forge National Park Connector

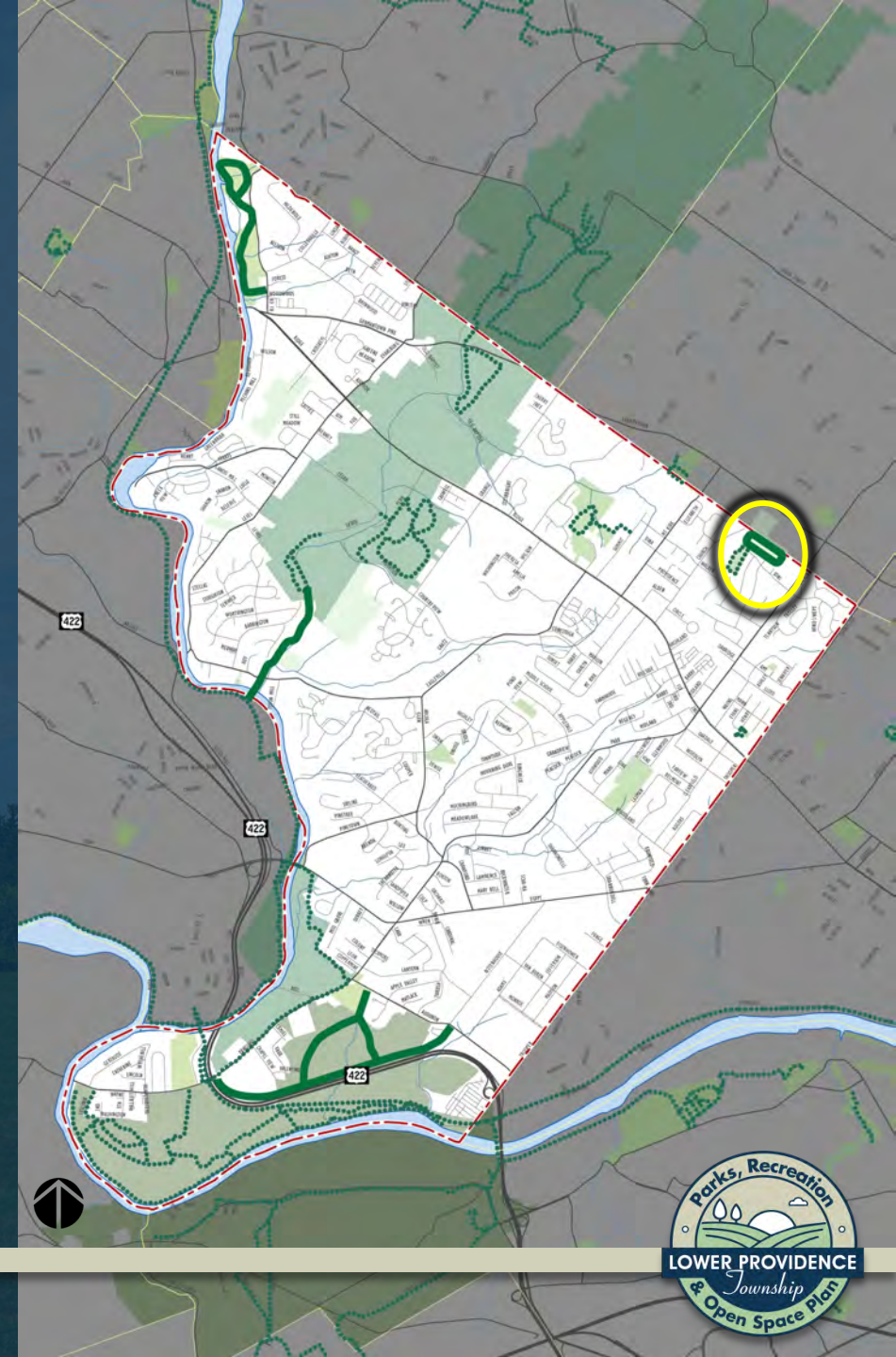




# Conceptual Trail Connections

## Proposed Trails

- Central Perkiomen Valley Park
- Evansburg State Park Connector
- **Eskie Park Loop Trail Extension**
- Valley Forge National Park Connector

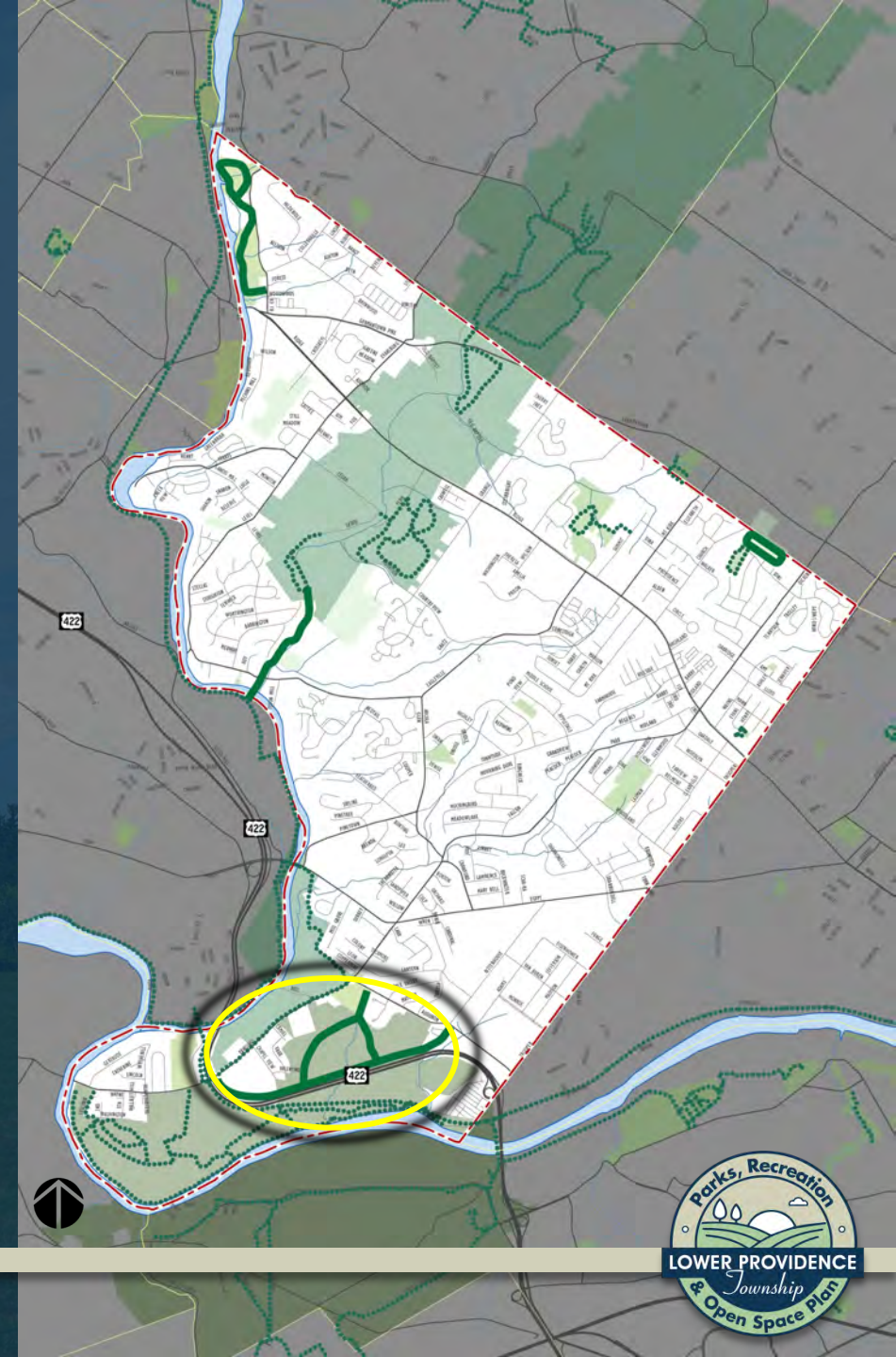
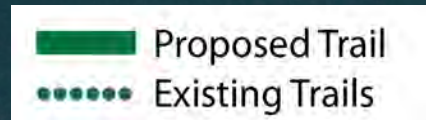




# Conceptual Trail Connections

## Proposed Trails

- Central Perkiomen Valley Park
- Evansburg State Park Connector
- Eskie Park Loop Trail Extension
- Valley Forge National Park Connector

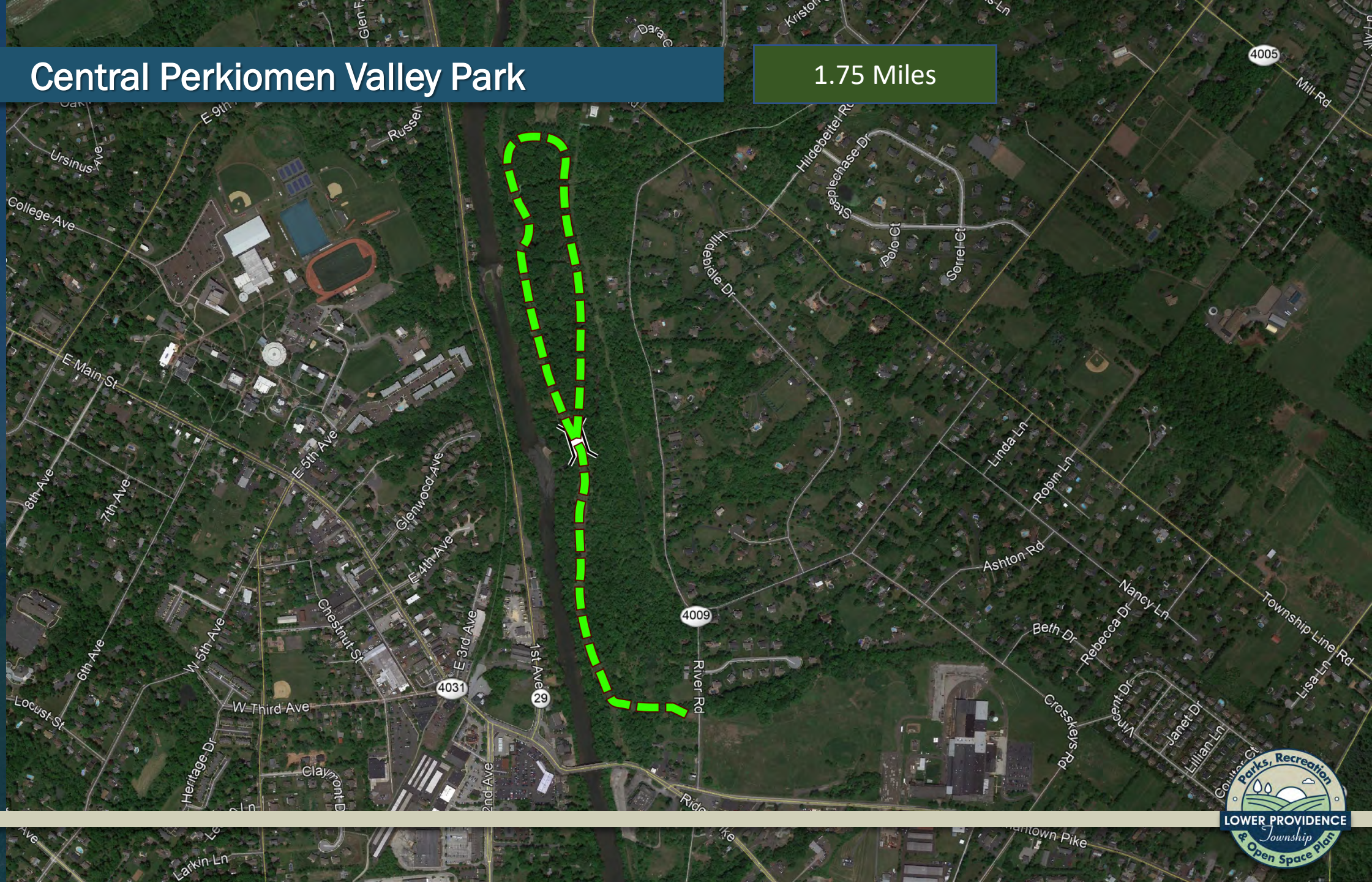




Trail:

# Central Perkiomen Valley Park

1.75 Miles





Trail:

# Evansburg State Park Connector

3.25+ Miles





Trail:

# Eskie Park Loop Trail Extension

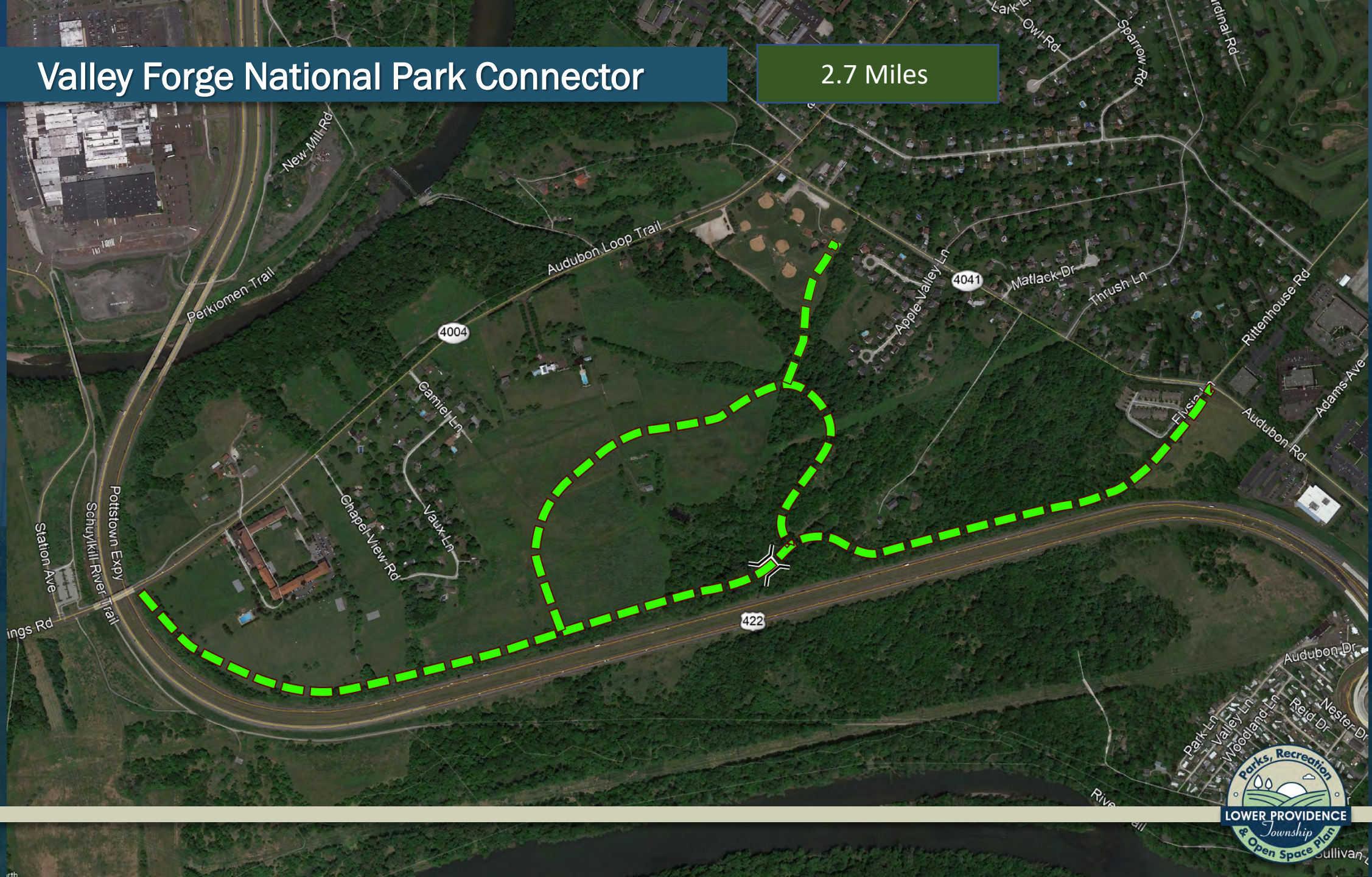
.65 Miles





# Trail: Valley Forge National Park Connector

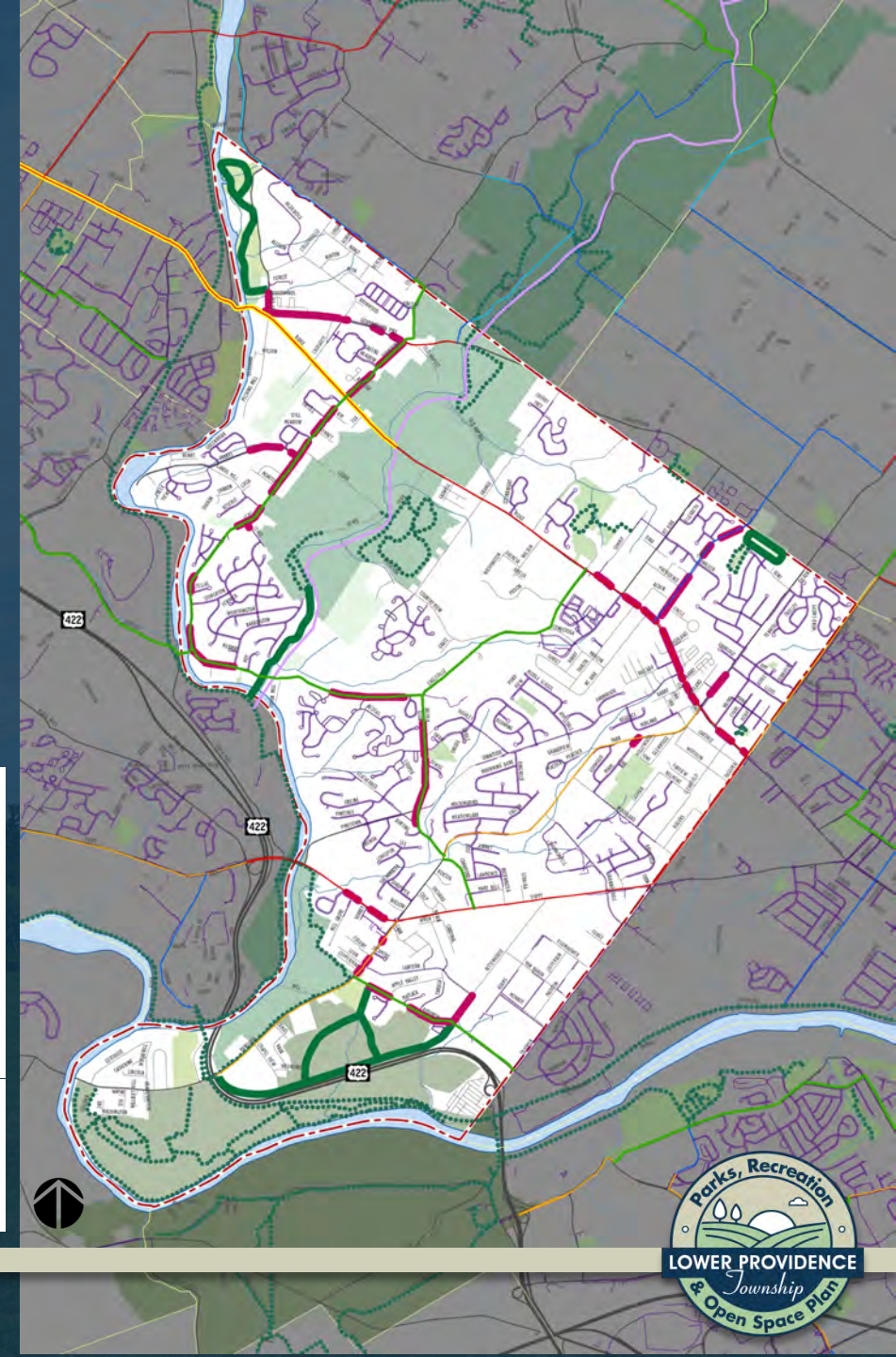
2.7 Miles





# Conceptual Trail Connections

- Connectivity Network – Work in progress, low stress route to be examined
- Input needed from Committee:
  - More possible trail alignments?
  - On road alignments, low stress preferable





# Maintenance & Programming

## Programming

- Recreation programs offered and well received, but opportunities exist:
- Additional programs particularly in the late fall, winter, and early spring
- Preliminary findings indicate indoor facilities are needed to provide cold weather seasonal programming
- Partnerships with other agencies (schools, county, private facilities), M.O.U.'s
- Review ways to attract “customers” to programs
- Third Party Contractors
- Additional outdoor recreation opportunities to enhance visitors experiences in the parks
- Additional public input is necessary to assist in determining the community wants and expectations concerning recreational programming





# Maintenance & Programming

## Finance

- Sound budgetary system is in place to record program revenues and expenses
- Additional revenues will be realized if/when additional programs are introduced
- Review of program fees will assist in determining programming fees, TBD

## Maintenance

- Solid maintenance practices exist
- Adherence to Consumer Product Safety Commission guidelines are followed in all parks, minor deviations were found
- ADA compliance evaluation of each park will be undertaken to determine deficient areas
- Dedicated seasonal park maintenance workers would enhance the work effort





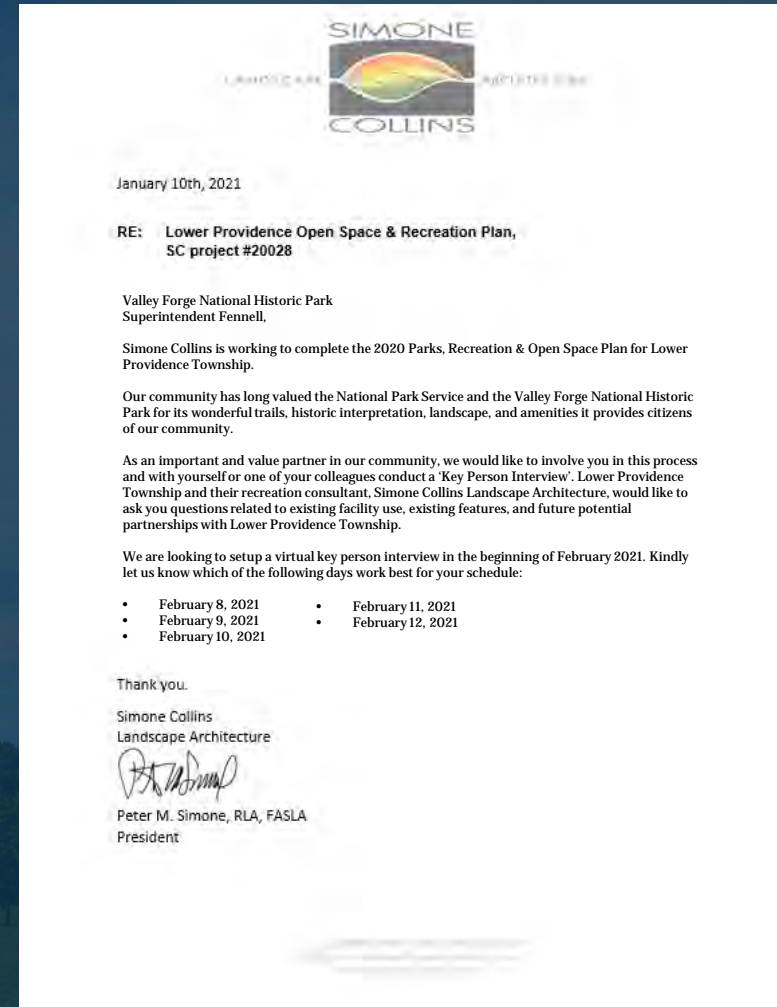
# Key Person Interviews / Focus Groups

## Key Person Interviews

- NPS-Valley Forge National Historical Park
- DCNR-Evansburg State Park
- Perkiomen Watershed Conservancy
- John James Audubon Center
- Montgomery County Parks, Trails & Historic Sites
- Lower Providence Township Board of Supervisors (5)

## Focus Groups

- **Social Groups &/or Service Organizations**
  - Lower Providence Community Library
  - Optimist Club
  - Lower Providence Business Association
  - Audubon Oaks Lions Club
  - Providence Place (assisted living facility)
- **School Focus Group**
  - Methacton School District
  - Arrowhead Elementary School
  - Eagleville Elementary School
  - Arcola Intermediate School/Skyview Upper Elementary School
  - Woodland Elementary School
  - Daycares and Preschools



*Letter to National Park Service, drafted by Simone Collins – to be sent by Lower Providence on Twp. letterhead*

***We need your contact information!***



# Key Person Interviews / Focus Groups

- **Active Recreation Groups**

- Lower Providence Mavericks - Connie Mack Baseball
- Methacton Baseball Association
- Lower Providence Warriors - Football (Evansburg Point Park)
- Methacton Warriors Football and Cheer (Eagleville Park)
- Methacton Aquatic Club
- Knight's Cricket Club (Gabriel's Field)
- FC Montco (Redtail Park)
- Audubon Recreation Association (Youth Baseball)
- Local Gyms

- **Passive Recreation Groups**

- Hideaway Day Camp
- Schuylkill River Trail Partners
- Local Boy Scout Troops
- Montgomery County
- Firebirds Theatre Program



# Next Steps

- **Public Meeting 2 :**

Tuesday, January 26, 2021 7:00 PM-9:00 PM

- **Format?**
- **Topics Covered?**

	Meeting Title	Meeting Date
2020	Open Space Committee Meeting #1	Wednesday, August 12th
	Open Space Committee Meeting #2	Thursday, Sept 10
	Public Meeting #1	Monday, October 26
	Open Space Committee Meeting #3	Wednesday, November 18
	Focus Group Meeting #1 - Active Sports	Late November
	Focus Group Meeting #2 - Passive Activities	Late November
	Focus Group Meeting #3 - Senior Activities	Early December
	Focus Group Meeting #4- Cultural, Arts, Religious	Early December
2021	Open Space Committee Meeting #4	Wednesday, January 6
	Public Meeting #2	Tuesday, January 26
	Open Space Committee Meeting #5	Wednesday, February 3
	Open Space Committee Meeting #6	Thursday, March 25
	Key Person Interviews (12)	Dates TBD
	Web Based Survey - write and administer	Oct 1 through April 1
	Wiki - Mapping interactive community mapping	Oct 1 through April 1
	Public Meeting #3 with Board of Supervisors	Thursday, April 15
	Open Space Committee Meeting #7	Tuesday June 1
	Public Meeting #4	Thursday, June 24



# Next Steps

- Committee Meeting 5 :

Wednesday, February 3, 2021

- Public Meeting 2 :

Tuesday, January 26, 2021 7:00 PM-9:00 PM

Public Opinion Survey

<https://www.surveymonkey.com/r/LowerProvidenceParks>



- Wikimapping

[wikimapping.com/Lower-Providence.html](http://wikimapping.com/Lower-Providence.html)

	Meeting Title	Meeting Date
2020	Open Space Committee Meeting #1	Wednesday, August 12th
	Open Space Committee Meeting #2	Thursday, Sept 10
	Public Meeting #1	Monday, October 26
	Open Space Committee Meeting #3	Wednesday, November 18
	Focus Group Meeting #1 - Active Sports	Late November
	Focus Group Meeting #2 - Passive Activities	Late November
	Focus Group Meeting #3 - Senior Activities	Early December
	Focus Group Meeting #4- Cultural, Arts, Religious	Early December
2021	Open Space Committee Meeting #4	Wednesday, January 6
	Public Meeting #2	Tuesday, January 26
	Open Space Committee Meeting #5	Wednesday, February 3
	Open Space Committee Meeting #6	Thursday, March 25
	Key Person Interviews (12)	Dates TBD
	Web Based Survey - write and administer	Oct 1 through April 1
	Wiki - Mapping interactive community mapping	Oct 1 through April 1
	Public Meeting #3 with Board of Supervisors	Thursday, April 15
	Open Space Committee Meeting #7	Tuesday June 1
	Public Meeting #4	Thursday, June 24



# Next Steps



Lower Providence Township is working on a Parks, Recreation & Open Space Plan and would like to know where you want to see open space and recreation improvements.

## 3 WAYS TO GET INVOLVED:

### 1 Attend a Meeting

Let your voice be heard. At public meetings we'll discuss the Lower Providence Township Parks, Recreation & Open Space Plan, review progress, and get your feedback. Meetings will be held virtually unless otherwise noted.

- **Public Meeting #1** will take place **Monday September 28, 2020 at 7:00pm**  
Join at: <https://tinyurl.com/lowerprovidence1>
- **Public Meeting #2** will take place **Tuesday January 26, 2021 at 7:00pm**  
Join at: <https://tinyurl.com/lowerprovidence2>
- **Public Meeting #3** will take place **Thursday April 15, 2021 at 7:00pm**  
Join at: <https://tinyurl.com/lowerprovidence3>
- **Public Meeting #4** will take place **Thursday June 24, 2021 at 7:00pm**  
Join at: <https://tinyurl.com/lowerprovidence4>

After joining on the Teams app or website and signing in, you will enter the meeting. For information on accessing the meeting, go to <https://tinyurl.com/lowerprovidenceparks>

### 2 Take the Survey

Obtaining feedback from the community is vital to the planning process. We want to know your opinions on how to improve open space & recreation in Lower Providence. The survey can be completed at the web address below. Hard copies of the survey may be picked up and returned completed to the Lower Providence Administration Building, 100 Parklane Dr, Eagleville, PA 19403

[surveymonkey.com/r/LowerProvidenceParks](https://surveymonkey.com/r/LowerProvidenceParks)

### 3 Comment on WikiMapping

Place comments directly on the easy to use digital map of Lower Providence. Let us know existing & favorite trails, challenging intersections & roadways, important destinations, and desired park and open space improvements.

[wikimapping.com/Lower-Providence.html](https://wikimapping.com/Lower-Providence.html)

## Public Meeting 2 Link:

<https://tinyurl.com/lowerprovidence2>

	Meeting Title	Meeting Date
2020	Open Space Committee Meeting #1	Wednesday, August 12th
	Open Space Committee Meeting #2	Thursday, Sept 10
	Public Meeting #1	Monday, October 26
	Open Space Committee Meeting #3	Wednesday, November 18
	Focus Group Meeting #1 - Active Sports	Late November
	Focus Group Meeting #2 - Passive Activities	Late November
	Focus Group Meeting #3 - Senior Activities	Early December
	Focus Group Meeting #4- Cultural, Arts, Religious	Early December
2021	Open Space Committee Meeting #4	Wednesday, January 6
	Public Meeting #2	Tuesday, January 26
	Open Space Committee Meeting #5	Wednesday, February 3
	Open Space Committee Meeting #6	Thursday, March 25
	Key Person Interviews (12)	Dates TBD
	Web Based Survey - write and administer	Oct 1 through April 1
	Wiki - Mapping interactive community mapping	Oct 1 through April 1
	Public Meeting #3 with Board of Supervisors	Thursday, April 15
	Open Space Committee Meeting #7	Tuesday June 1
	Public Meeting #4	Thursday, June 24

## Public Involvement Poster



# Thank You

## Contact Information:

SIMONE COLLINS LANDSCAPE ARCHITECTURE - 610.239.7601

**Peter Simone, RLA, FASLA, Principal**

[psimone@simonecollins.com](mailto:psimone@simonecollins.com)

**Pankaj Jobanputra, AICP, Project Manager**

[pjobanputra@simonecollins.com](mailto:pjobanputra@simonecollins.com)

**Geoff Creary, Land. Arch., Connectivity Expert / Graphics**

[gcreary@simonecollins.com](mailto:gcreary@simonecollins.com)

**Joseph Wallace, Staff Landscape Architect**

[jwallace@simonecollins.com](mailto:jwallace@simonecollins.com)

**Michelle Armour, Staff Landscape Architect**

[marmour@simonecollins.com](mailto:marmour@simonecollins.com)

