



Parks, Recreation & Open Space Plan

Public Meeting 2 – January 26, 2021

- Welcome and thank you for attending.
The live presentation will start promptly at 7PM.
Please note this presentation is being recorded.
- During the presentation, please type questions into the Q&A box.
Question will be answered during the Q&A segment.
Feel free to sign in by entering your name in the Q&A box when joining.
- If you are listening on a phone, you will be muted on entry and instructions will be provided on how to unmute and participate.



Agenda

- Introductions
- Project Scope & Schedule
- Project Goals & Objectives
- Review Public Meeting 1, October 26, 2020
- Updated Survey & Wikimapping Results
- Community Benchmarking & Projected Future Facility Needs
- Conceptual Open Space / Recreation Parcels for Acquisition
- Facilities Analysis
- Stormwater Management & Greenways
- Sidewalk Gaps
- Conceptual Trails Review
- Maintenance & Programming Analysis
- Official Map Review
- Next Steps



Open Space Committee

- Colleen Eckman - Supervisor
- Jean Akers - Chair for Open Space Committee and member of Park Board Committee
- Susan LaPenta – Township Planning Commission
- Bill Brooke – Township Planning Commission
- Erin DiPaolo - Township Park Board Committee
- Beth Ann Mazza – Township Park Board Committee
- Katherine McGrath- Township Park Board Committee – Student Representative
- Jane Delaney – Parks and Recreation Director
- Donald Delamater- Township Manager



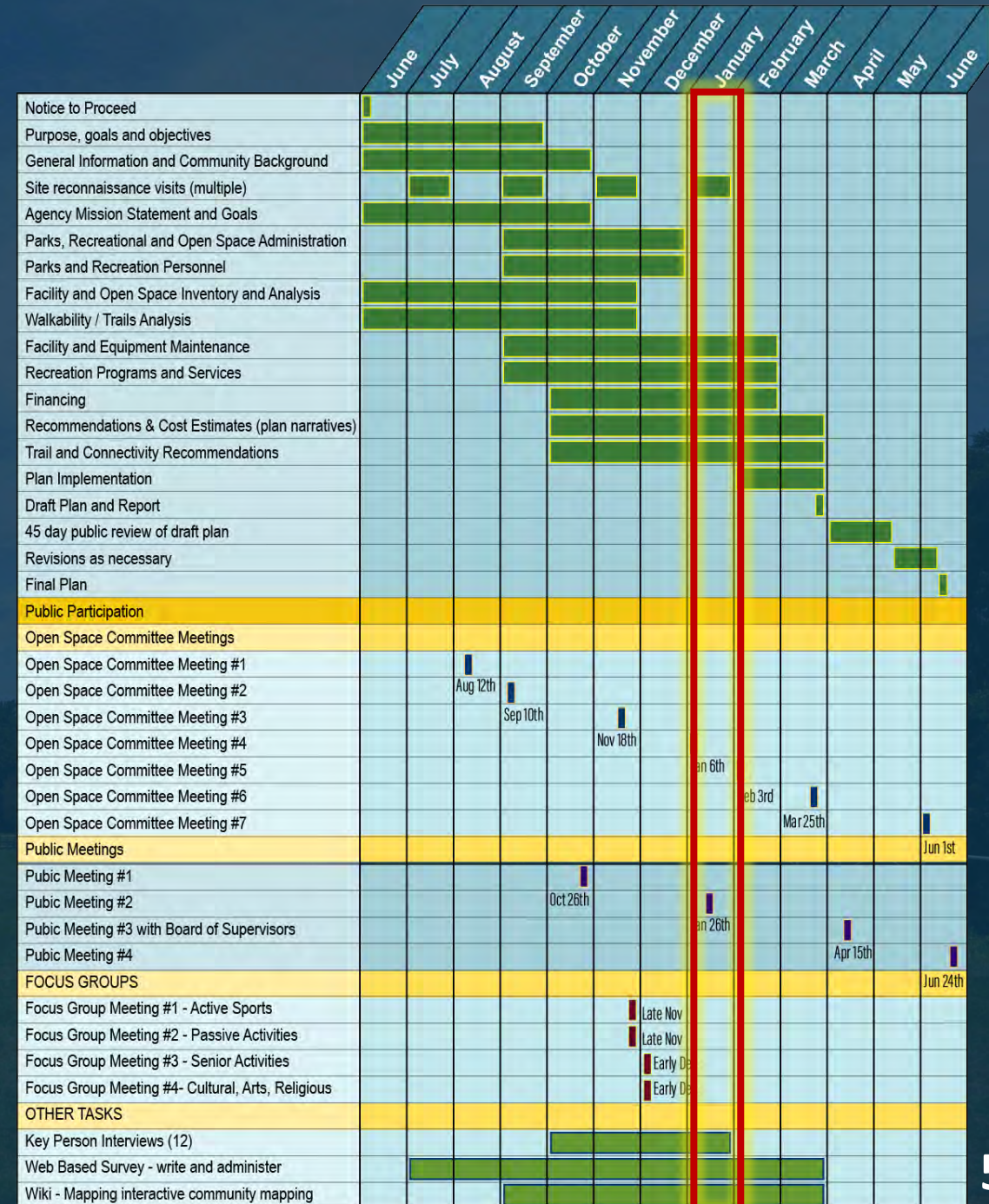
Project Scope

- Existing conditions inventory and data collection
- Activities and facilities analysis
- Site reconnaissance
- Public participation
 - 4 committee meetings
 - 4 public meetings
 - Key persons interview
 - Public opinion survey
- Vision goals and objectives
- Report with recommendations for open space, recreational facilities and programming, and multi-modal and greenway connections
- Implementation strategies
- Regulations, management, planning and financing



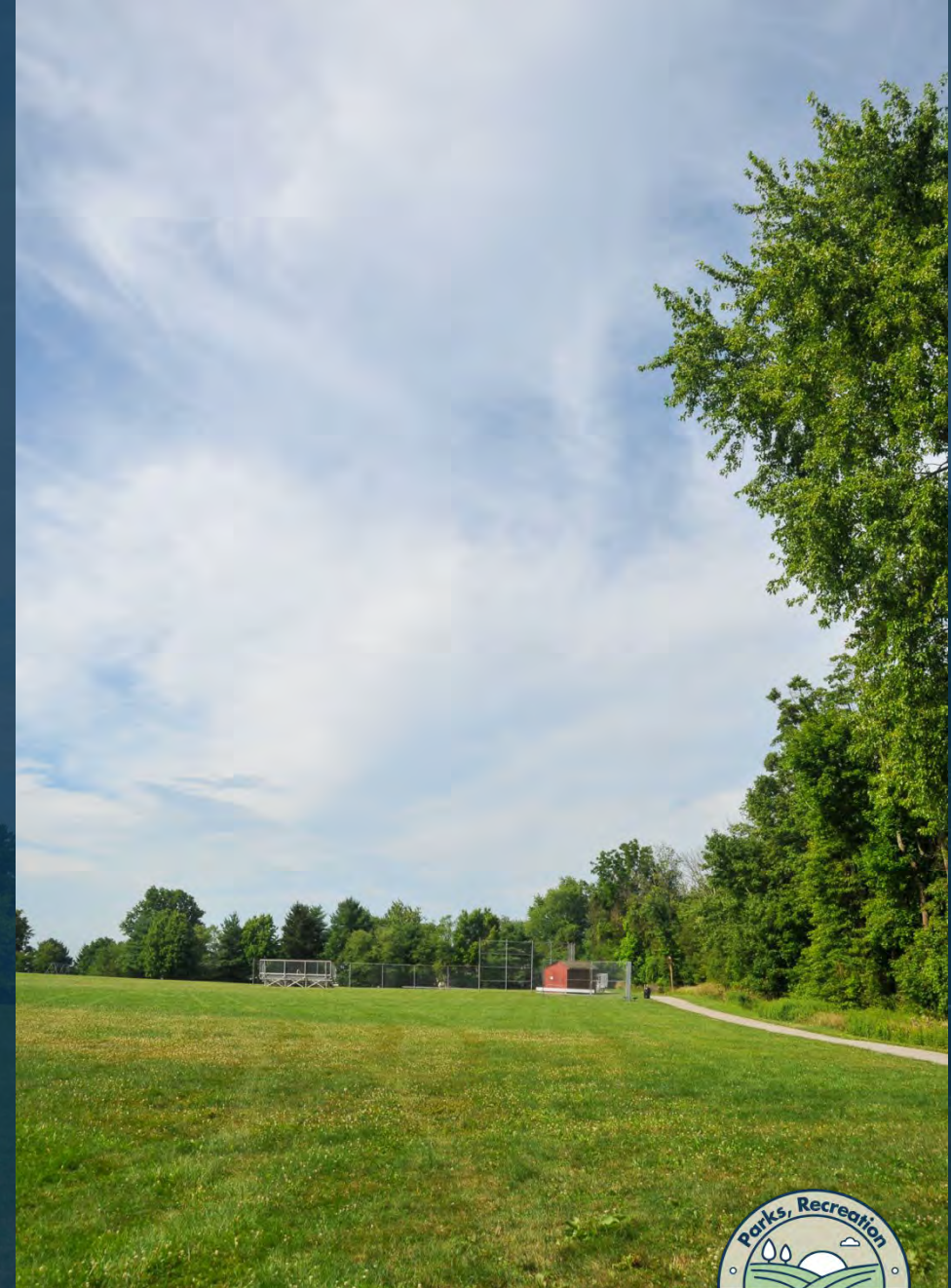
Project Schedule

	Meeting Title	Meeting Date
2020	Open Space Committee Meeting #1	Wednesday, August 12th
	Open Space Committee Meeting #2	Thursday, Sept 10
	Public Meeting #1	Monday, October 26
	Open Space Committee Meeting #3	Wednesday, November 18
	Focus Group Meeting #1 - Active Sports	Late November
	Focus Group Meeting #2 - Passive Activities	Late November
	Focus Group Meeting #3 - Senior Activities	Early December
	Focus Group Meeting #4- Cultural, Arts, Religious	Early December
	Open Space Committee Meeting #4	Wednesday, January 6
	Public Meeting #2	Tuesday, January 26
2021	Open Space Committee Meeting #5	Wednesday, February 3
	Open Space Committee Meeting #6	Thursday, March 25
	Key Person Interviews (12)	Dates TBD
	Web Based Survey - write and administer	Oct 1 through April 1
	Wiki - Mapping interactive community mapping	Oct 1 through April 1
	Public Meeting #3 with Board of Supervisors	Thursday, April 15
	Open Space Committee Meeting #7	Tuesday June 1
	Public Meeting #4	Thursday, June 24



Plan Goals

- Create a **sustainable plan** for parks, recreation and open space
- Provide **equitable access** and opportunities to all residents
- Preserve cherished Township characteristics and **valued natural resources**
- Plan for **safe multi-modal connections** between various Township park, recreation, and open space resources



Plan Objectives

- **Survey** area residents to determine current perceptions and needs regarding park, recreation, and open space facilities and programs in the Township;
- **Conduct** public meetings to gather information, comments, and suggestions from residents, local organizations, and other stakeholders;
- **Inventory** existing parks, recreational facilities, preserved open space, trails, schools, private sector recreation providers and other important recreation destinations within the Township;



Plan Objectives

- **Compare** the existing inventory of park facilities with other similarly sized communities;
- **Analyze** current active and passive recreational facility use;
- **Suggest** ways to enhance existing and planned trails with additional connections to area recreational, employment, residential, shopping, and other destinations;
- **Recommend** improvements which contribute to social, economic, and environmental sustainability, and;
- **Develop** a phased implementation and funding strategy to make the plan a reality.



Public Meeting 1 – October 26, 2020

Brainstorming Session Notes: Public Meeting #1

GOALS

FACTS

CONCEPTS

PARTNERS

- Provide for all ages
- Preserve resources
- Improve safety for pedestrians and bicycle riders
- Use open space plan to stop overdevelopment
- Provide kids safer access to school by walking and biking
- Improved water access

Public Meeting 1 – October 26, 2020

Brainstorming Session Notes: Public Meeting #1

GOALS

- Many municipal parks
- Existing trails
- Existing Playgrounds
- Diverse range of user ages
- Many communities in region encourage kids to walk/bike to school
- When communities have safe trails and connections, kids can be encouraged to walk
- Funding available for trails, parks, greenways

FACTS

CONCEPTS

PARTNERS

- Methacton SD hesitant to have kids walk / bike due to unsafe connections
- Studies show trail and sidewalks increase property values
- Dog park in Oaks – well used
- Camp Hideaway is private
- SD buses large number of students
- YMCAs short drive from Township
- Audubon School has several acres that can be green space

Public Meeting 1 – October 26, 2020

Brainstorming Session Notes: Public Meeting #1

GOALS

- Safe pedestrian connections to ARA fields
- Make connections to Valley Forge
- Consider 'no access' greenways
- Unusable open space for solar / wind
- Bike / ped connections between regional trails and neighborhoods
- Ped/bike bridges across Perkiomen Creek
- Community Center / YMCA
- Redevelop 'grey areas' to create cultural centers / 3rd places

FACTS

CONCEPTS

PARTNERS

- Connect to County trail system
- Connect to Circuit Trails
- Rebuild Yerkes bridge across Perkiomen as footbridge
- More connections to state park
- Look at Ridge Pike for redevelopment, open space, and trail options
- Look at St. Gabriel's for multi-purpose fields for various sports teams

Public Meeting 1 – October 26, 2020

Brainstorming Session Notes: Public Meeting #1

GOALS

FACTS

CONCEPTS

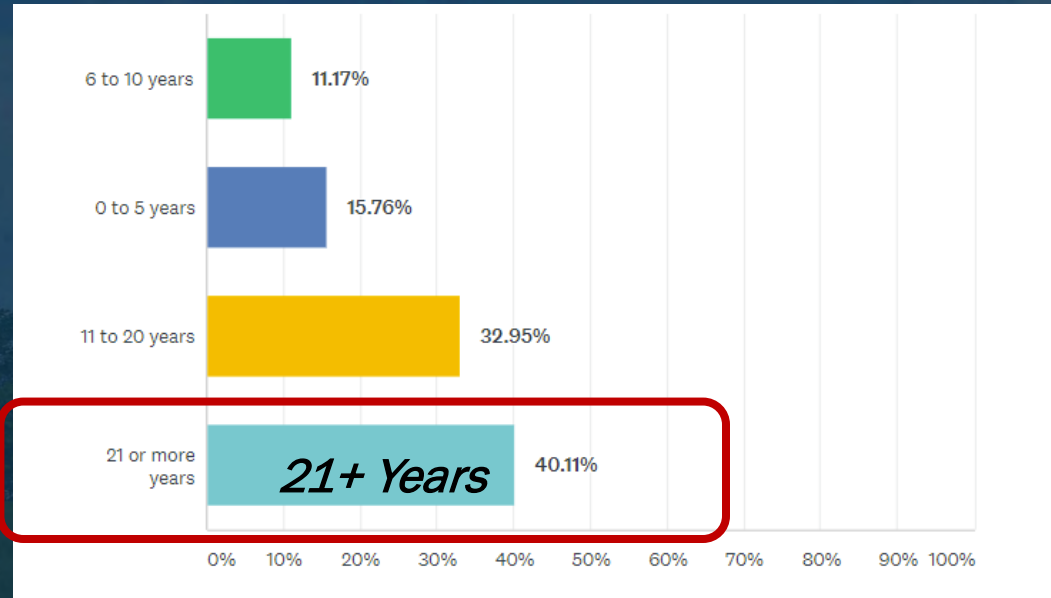
PARTNERS

- William Penn Foundation
- DCNR
- Montgomery County
- Local Businesses

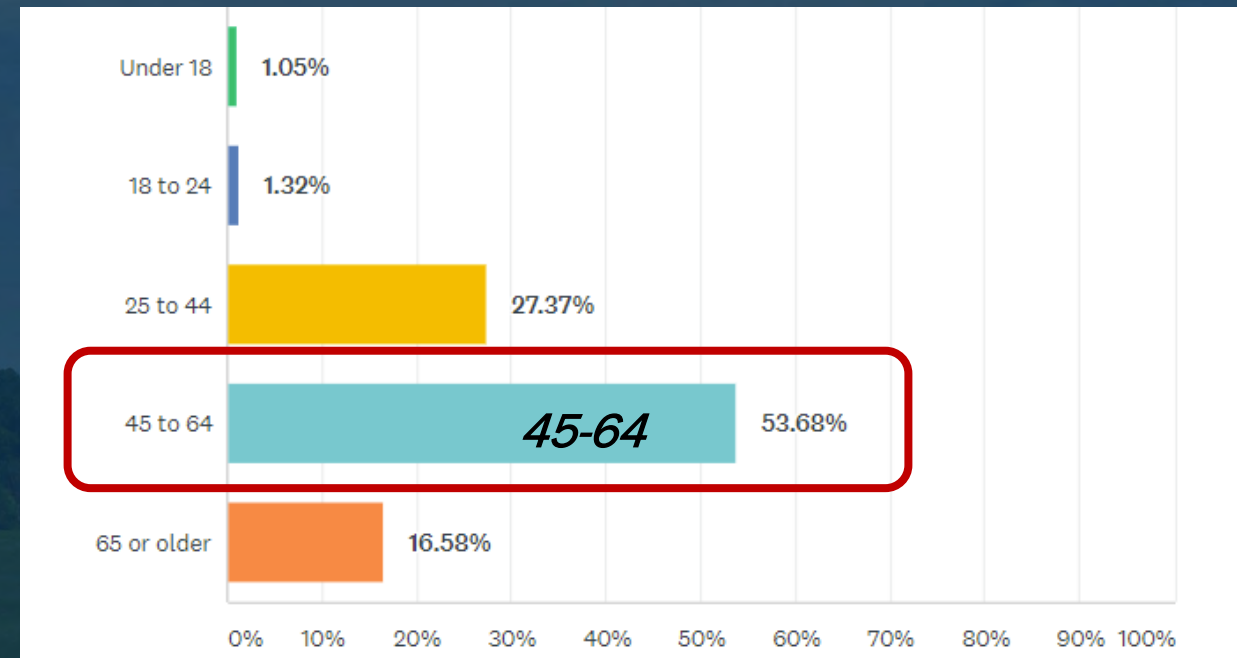
Public Survey Preliminary Results

380 completed surveys as of January 26, 2021

How long have you lived in Lower Providence Township?



What is your age?

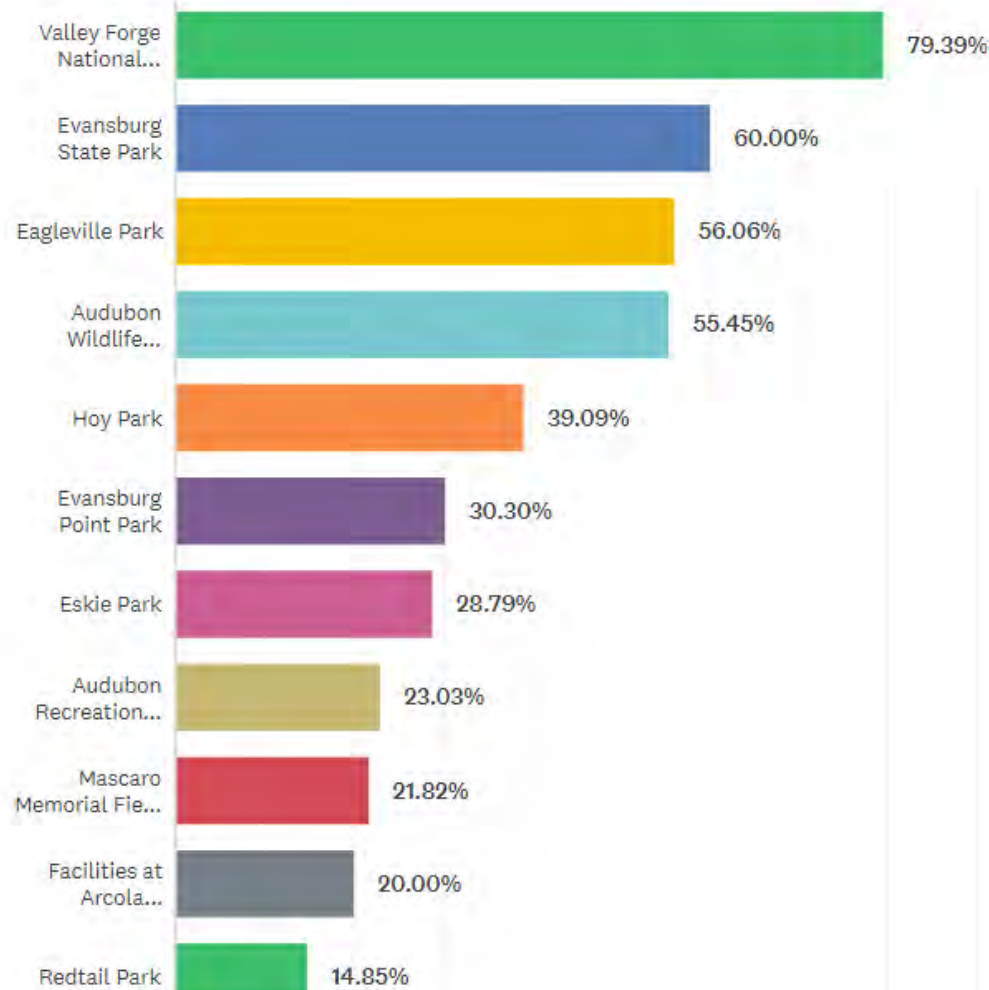


<https://www.surveymonkey.com/r/LowerProvidenceParks>

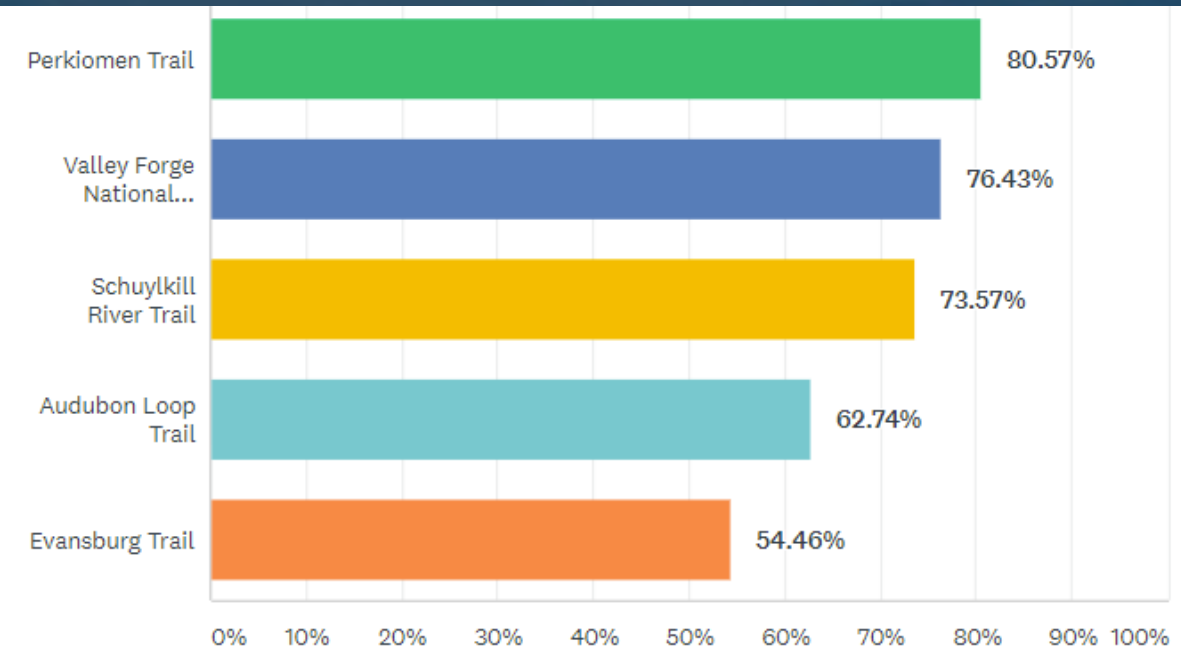
Public Survey Preliminary Results

380 completed surveys as of January 26, 2021

Which parks, natural areas, trails, or facilities do you visit for recreation purposes? (Please check all that apply)



If you do use area trails, which ones do you use?



WikiMapping Preliminary Results

87 WikiMap comments made as of January 26, 2021

- Comment Breakdown / Locations Delineated:

Barriers to Connectivity: 6

Sidewalk Gap: 6

Desired Park Location: 8

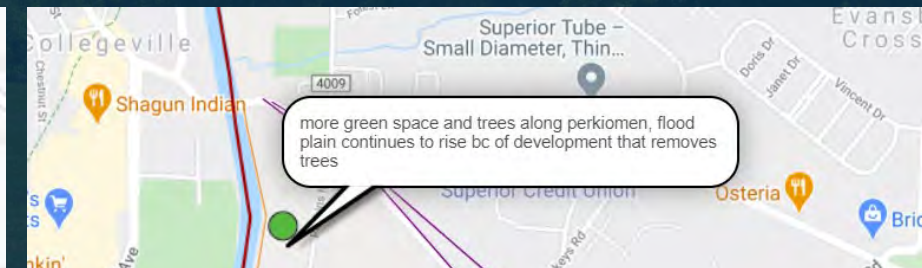
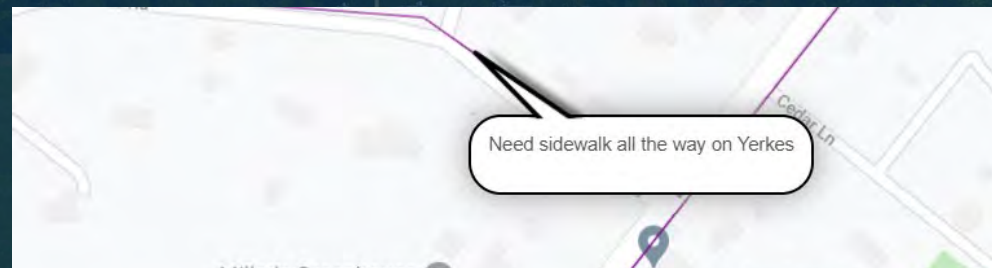
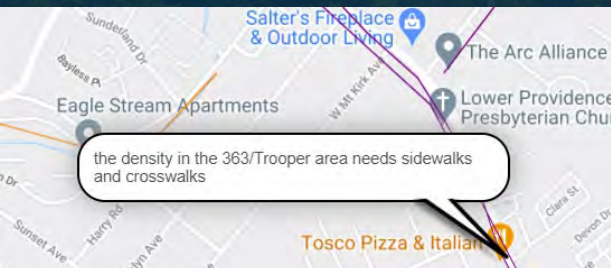
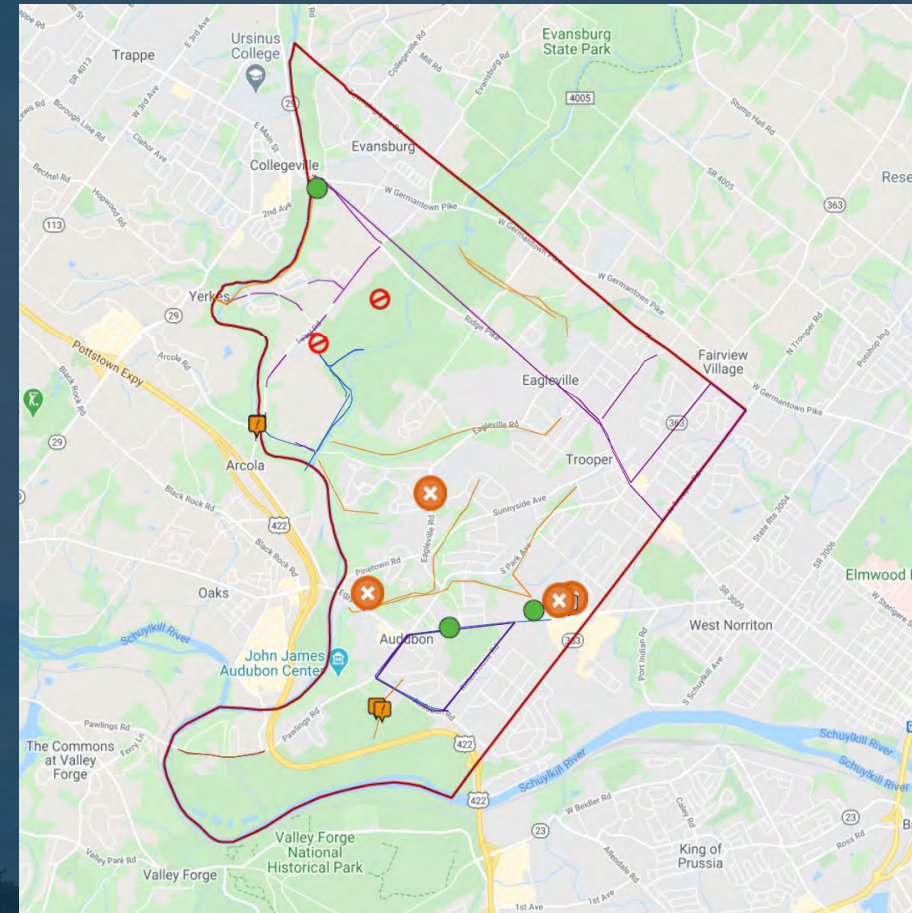
Challenging Pedestrian / Bike Area: 8

Desired Crosswalk : 9

Desired Bike Route: 13

Desired Trail: 14

Desired Sidewalk: 23



<https://wikimapping.com/Lower-Providence.html>

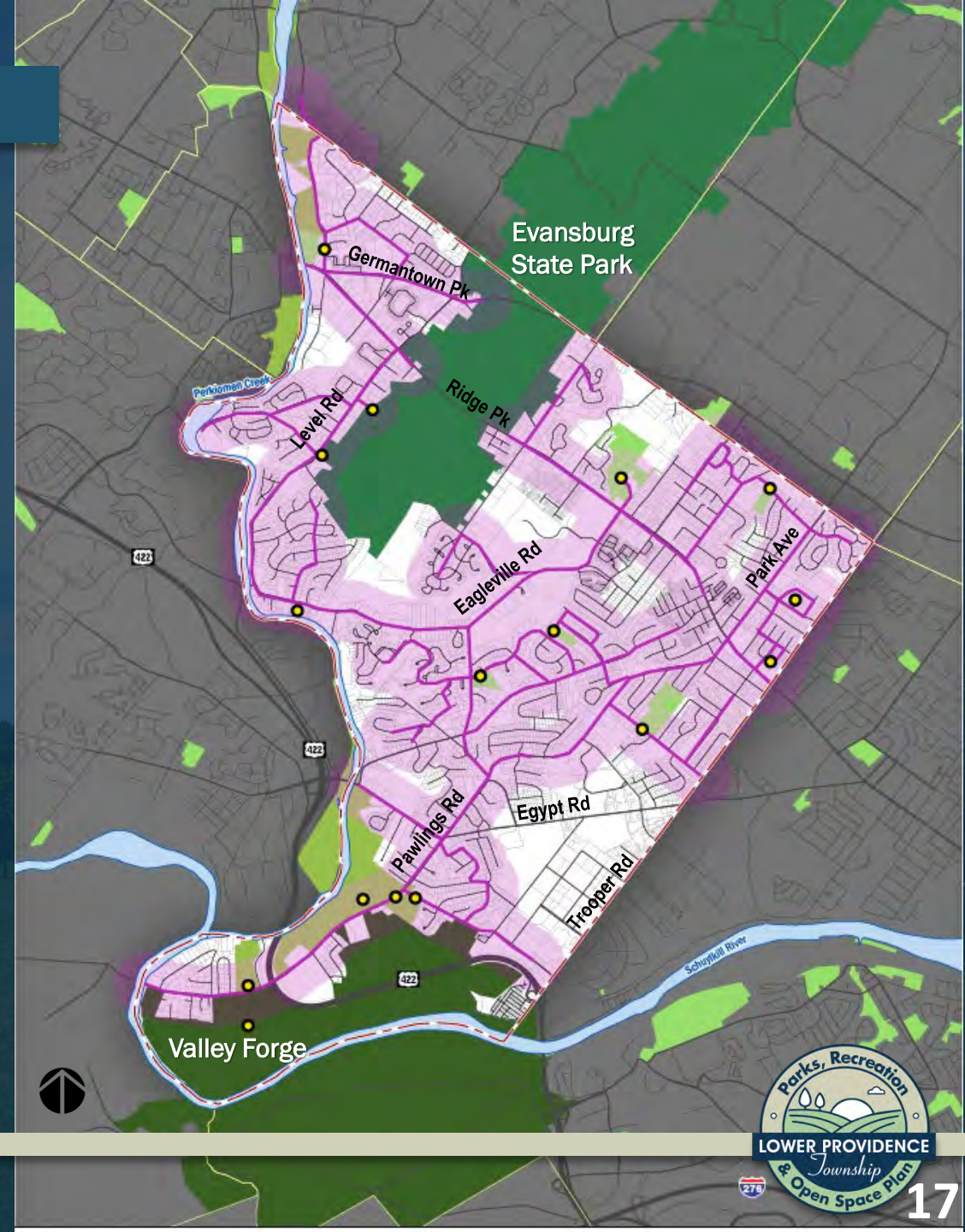
Township Park & Recreation System

1. Eagleville Park (Township)
2. Eskie Park (Township)
3. Audubon Rec Association Fields (County)
4. Audubon Center Grounds and Audubon Loop (County)
5. Gabriel's Field / Knight's Cricket Field (County)
6. Valley Forge / Pawling Farm / Pawling Sycamore / River Trail (Federal)
7. Audubon Elementary School (MSD)
8. Redtail Park (Township)
9. Arcola Intermediate School (MSD)
10. Pond View Park (Township)
11. Hoy Park (Township)
12. Evansburg Point Park (Township)
13. Evansburg State Park (State)
14. Arrowhead Elementary School (MSD)
15. Level Road School House (Township)
16. IBEW lands off Ridge Pike and Level Rd (Private)
17. Cranberry Park (Township)
18. Central Perkiomen Valley Park (County)
19. Sherwood Park (Township)
20. Dell Angelo Park (Township)
21. Woodland Elementary School (MSD)
22. Mascaro Memorial Field and Community Park (Township)



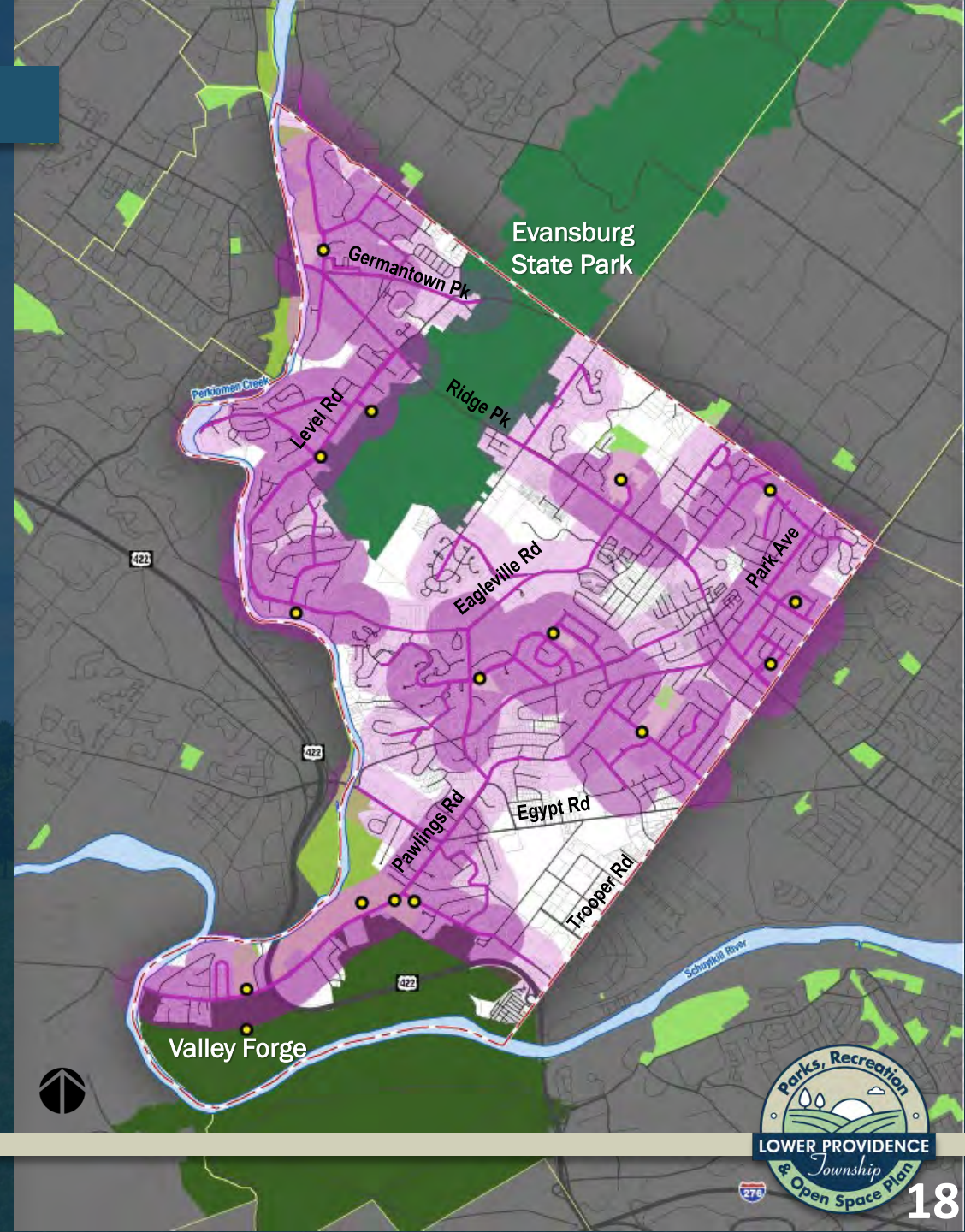
Park Service Areas / Gaps

- Areas that are within – 1 mile walking distance of a Lower Providence Park & Recreation Area (not including Evansburg State Park & Valley Forge)





Park Service Areas / Gaps

- Areas that are within – 0.5 mile walking distance of a Lower Providence Park & Recreation Area (not including Evansburg State Park & Valley Forge)



Open Space Ownership

- Owner: **Montgomery County** 
 - Mix of undeveloped, open space and recreation areas
- Owner: **Lower Providence Township** 
 - Mix of undeveloped, open space and recreation areas



NRPA Benchmarking

General definitions by National Recreation and Park Association (NRPA) Park, Recreation, Open Space and Greenway Guidelines:

Community Parks –

- Serve to meet the needs of several neighborhoods or large area of the community
- Allow for group activity
- Developed for both active and passive recreation
- Service area should be .5 to 3 mile radius
- Size is best determined by demographics, population, resource availability and recreation demands. Optimal size is 30-50 acres (Both Eagleville and Evansburg Point Parks are over 30 acres in size, at 64.92 and 35.6 acres respectively)
- Should preserve unique landscapes within the community and/or provide recreation opportunities not available within the area served

Connector Trails –

- Multi purpose trails that emphasize safe travel for pedestrians and bicyclist to and from parks and throughout the community

NRPA Benchmarking

NRPA understands that there is no single set of standards for parks and recreation to address the uniqueness of a community.

- 2020 NRPA Performance Review – Park Facilities
(typical for communities with populations between 20,000 - 49,999)
 - One park for every 1,963 residents.
LPT would need an additional 0.6 parks to meet this metric.
 - 9.6 acres of parkland per 1,000 residents. (Township parks only)
LPT would need to add an additional 53.5 acres to meet this metric.
 - One playground for every 3,157 residents.
LPT exceeds this metric by 2.6 playgrounds.
 - One performance amphitheater for every 30,577 residents.
LPT exceeds this metric with one amphitheater for a population of 26,679.
 - One recreation center for every 25,716 residents, and one community center for every 26,280 residents.
LPT would need one recreation or community center to meet this metric.
 - One senior center for every 32,639 residents.
LPT would need one senior center to meet this metric.

Community Benchmarking

Lower Providence Township – 2019 *Population: 26,873*

Benchmarked Communities:

- Upper Providence Township, Montgomery County – *Population: 24,355*
- Upper Dublin Township, Montgomery County – *Population: 26,553*
- McCandless Township, Allegheny County – *Population: 28,193*
- Municipality of Monroeville, Allegheny County – *Population: 27,380*
- Moon Township, Allegheny County – *Population: 25,437*
- Spring Township, Berks County – *Population: 27,659*



Projected Facility Needs - Community Benchmarking

Lower Providence Township – 2040 Population Projection: 28,448

Benchmarked communities' current populations were compared to Lower Providence future projected population.

Benchmarked Communities:

- Upper Merion Township, Montgomery County– *Population: 33,027*
- Tredyffrin Township, Chester County– *Population: 29,396*
- Radnor Township, Delaware County– *Population: 31,875*
- Lower Makefield Township, Bucks County– *Population: 32,802*
- Cranberry Township, Butler County– *Population: 31,632*
- York Township, York County– *Population: 28,776*



Community Benchmarking - Existing Facilities

	Lower Providence Township	Average	Difference from Average	Difference from Maximum
2040 Population Projection (ACS)	28,448	30,851	-2,403	-4,579
Area (Sq. Miles)	15.6	19	-3	-1.6
2040 Pop. Density per Sq. Mile	1,824	1,695	128	684
# of Parks	13	17	-4	-22
Park Area (Acres)	202.582	340	-138	-457.418
Facility				
Baseball / Softball	14	11	3	-1
Basketball	2	6	-4	-9
Biking / Hiking Trail / Walking Track	6	6	0	-10
Football	1	1	0	-2
Multipurpose Field	2	5	-3	-8
Pavilion / Rental Space	5	4	1	-2
Pool	0	1	-1	-5
Tennis	4	7	-3	-12
Bocceball Court	1	1	0	-1
Pickleball Court	0	1	-1	-5
Skate Park	0	0	0	-1
Soccer	1	4	-3	-10
Volleyball	0	3	-3	-10
Playgrounds	7	9	-2	-8
Disc Golf	0	0	0	0
Street Hockey / Ice Skating	0	1	-1	-1
Dog Park	0	1	-1	-1
Amphitheater	1	1	0	0
Community Garden	0	0	0	-1
Recreation Center	0	0	0	-1

Average, Lower Providence & Other Communities

Community Benchmarking - Existing Facilities

	Lower Providence Township	Average	Difference from Average	Difference from Maximum
2040 Population Projection (ACS)	28,448	30,851	-2,403	-4,579
Area (Sq. Miles)	15.6	19	-3	-1.6
2040 Pop. Density per Sq. Mile	1,824	1,695	128	684
# of Parks	13	17	-4	-22
Park Area (Acres)	202.582	340	-138	-457.418
Facility				
Baseball / Softball	14	11	3	-1
Basketball	2	6	-4	-9
Biking / Hiking Trail / Walking Track	6	6	0	-10
Football	1	1	0	-2
Multipurpose Field	2	5	-3	-8
Pavilion / Rental Space	5	4	1	-2
Pool	0	1	-1	-5
Tennis	4	7	-3	-12
Bocceball Court	1	1	0	-1
Pickleball Court	0	1	-1	-5
Skate Park	0	0	0	-1
Soccer	1	4	-3	-10
Volleyball	0	3	-3	-10
Playgrounds	7	9	-2	-8
Disc Golf	0	0	0	0
Street Hockey / Ice Skating	0	1	-1	-1
Dog Park	0	1	-1	-1
Amphitheater	1	1	0	0
Community Garden	0	0	0	-1
Recreation Center	0	0	0	-1

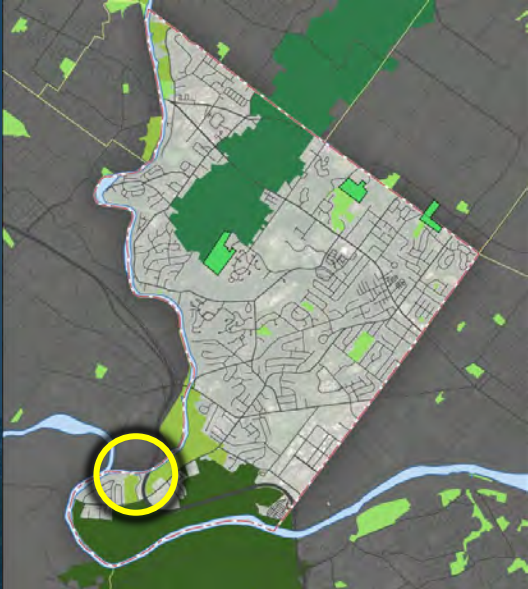
Projected **2040** recreation facility deficiencies are (If no open space & recreation improvements made):

- (4) Basketball Courts
- (3) Multipurpose Fields
- (1) Pool
- (3) Tennis Courts
- (1) Pickleball Court
- (3) Soccer Fields
- (3) Volleyball Fields
- (2) Playgrounds
- (1) Street Hockey / Ice Skating
- (1) Dog Park

Where can these facilities be accommodated within Lower Providence Township?

Projected Future Facility Needs

Knights Cricket Field



Projected Future Facility Needs – (Not A Design, Layout Only for Spatial Purposes)

Knights Cricket Field

- (4) Basketball Courts
- (3) Multipurpose Fields
 - (includes cricket)
- (3) Tennis Courts
- (1) Pickleball Court
- (3) Soccer Fields
- (3) Volleyball Fields
- (2) Playgrounds
- (1) Dog Park

***Potential restrictions-based size of PECO electrical lines**



Potential Open Space & Rec Acquisition

- Owner: **KeyBank**
- Size: **27 Acres**
- Characteristics:
Agricultural fields



Projected Future Facility Needs — (*Not A Design, Layout Only for Spatial Purposes*)

Option A: Agriculture Fields North of Eskie Park

- (4) Basketball Courts
- (2) Multipurpose Fields
- (3) Tennis Courts
- (1) Pickleball Court
- (3) Volleyball Fields
- (2) Playgrounds
- (1) Dog Park
- Perimeter trail can additional 3.3k' feet of trail to Eskie Park system
- Can be a multi-municipal effort for upper agricultural fields



Projected Future Facility Needs

Option B: Preserve Agriculture Fields North of Eskie Park

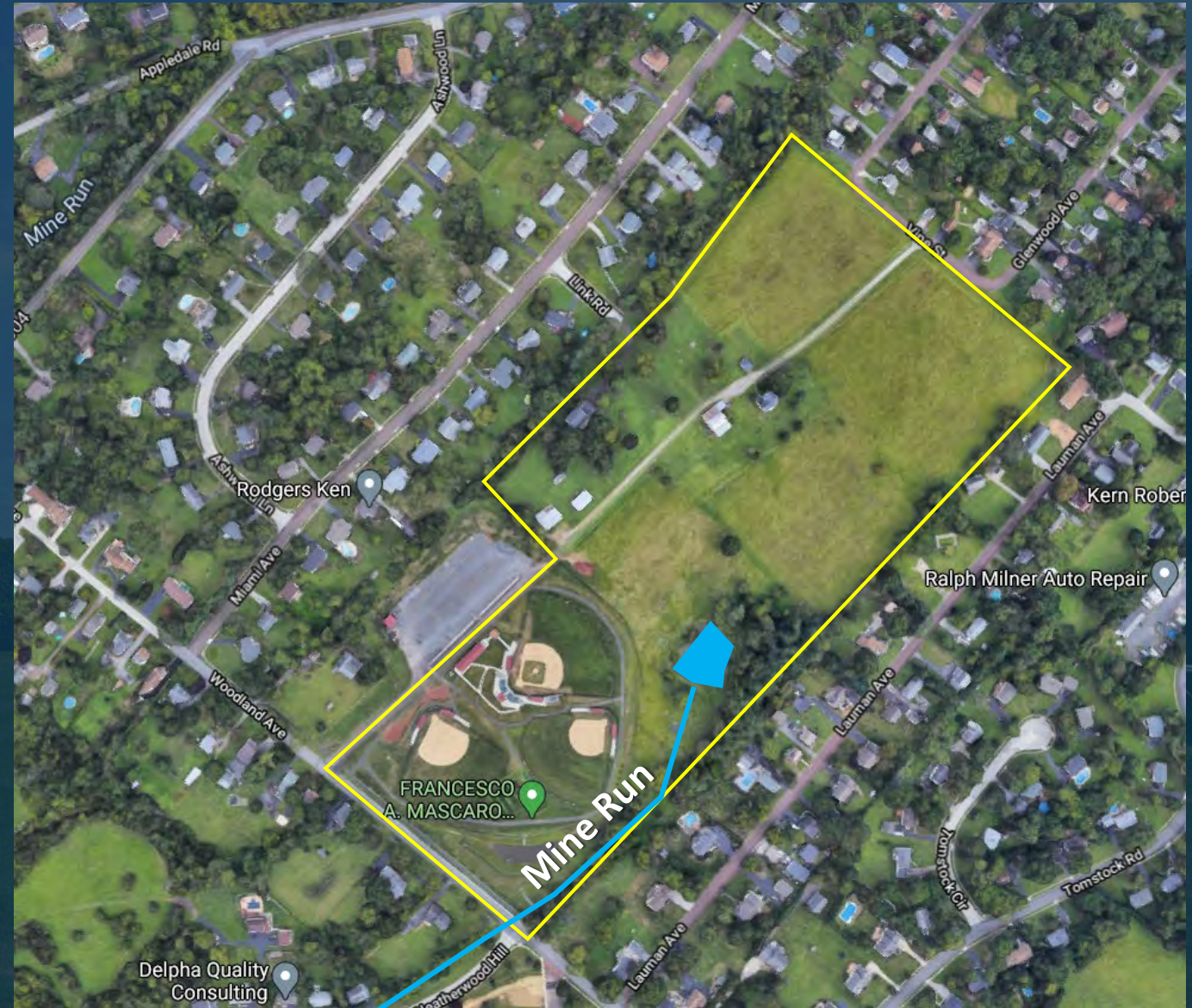
- Lower Providence Township has minimal preserved agricultural lands, in this option LP can purchase and permanently preserve this agriculture area



Projected Future Facility Needs

Open Space North of Mascaro Field

- Owner: MB Investments
- Opportunity for:
 - Native & songbird meadows
 - Stormwater BMPs – to protect Mine Run which is adjacent to site (tributary of Perkiomen)

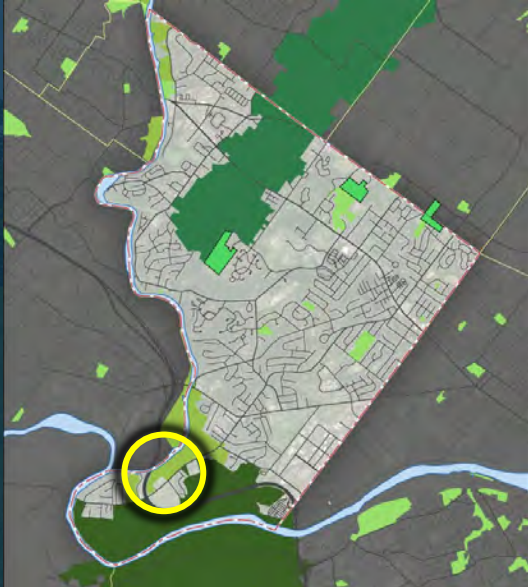


Projected Future Facility Needs — (Not A Design, Layout Only for Spatial Purposes)



Potential Open Space & Rec Acquisition

- Owner: **St. Gabriels Property (Philadelphia Protectory For Boys)**
- Size: **46.5 Acres**



Potential Open Space & Rec Acquisition

- Owner: **St. Gabriels Property (Philadelphia Protectory For Boys)**
- Size: **46.5 Acres**
- Potentially use St. Gabriels land (not building) to connect Audubon Center to Valley Forge & protect landscape
- Acquisition can connect ballfields and underutilized portion of Valley Forge Park
- Local, County, & Federal Project
- Could be potential application for future official map – designate fields as open space



Potential Open Space & Rec Acquisition

- Owner: **J. Heyser; BooBoo Realty**
- Size: **36 Acres; 17.5 Acres**
- Characteristics: Wooded / dense vegetation
- Contains tributary to Skippack Creek



Potential Open Space & Rec Acquisition

- Low-impact earth trails,
- Educational interpretation
- Forested / stormwater BMPs



Facilities Analysis

- Existing Conditions: **Redtail Park**



Facilities Analysis (1 example)

- Conceptual Facility Improvements: **Redtail Park**
- Facilities recommendations in-progress for each Lower Providence park & open space resource



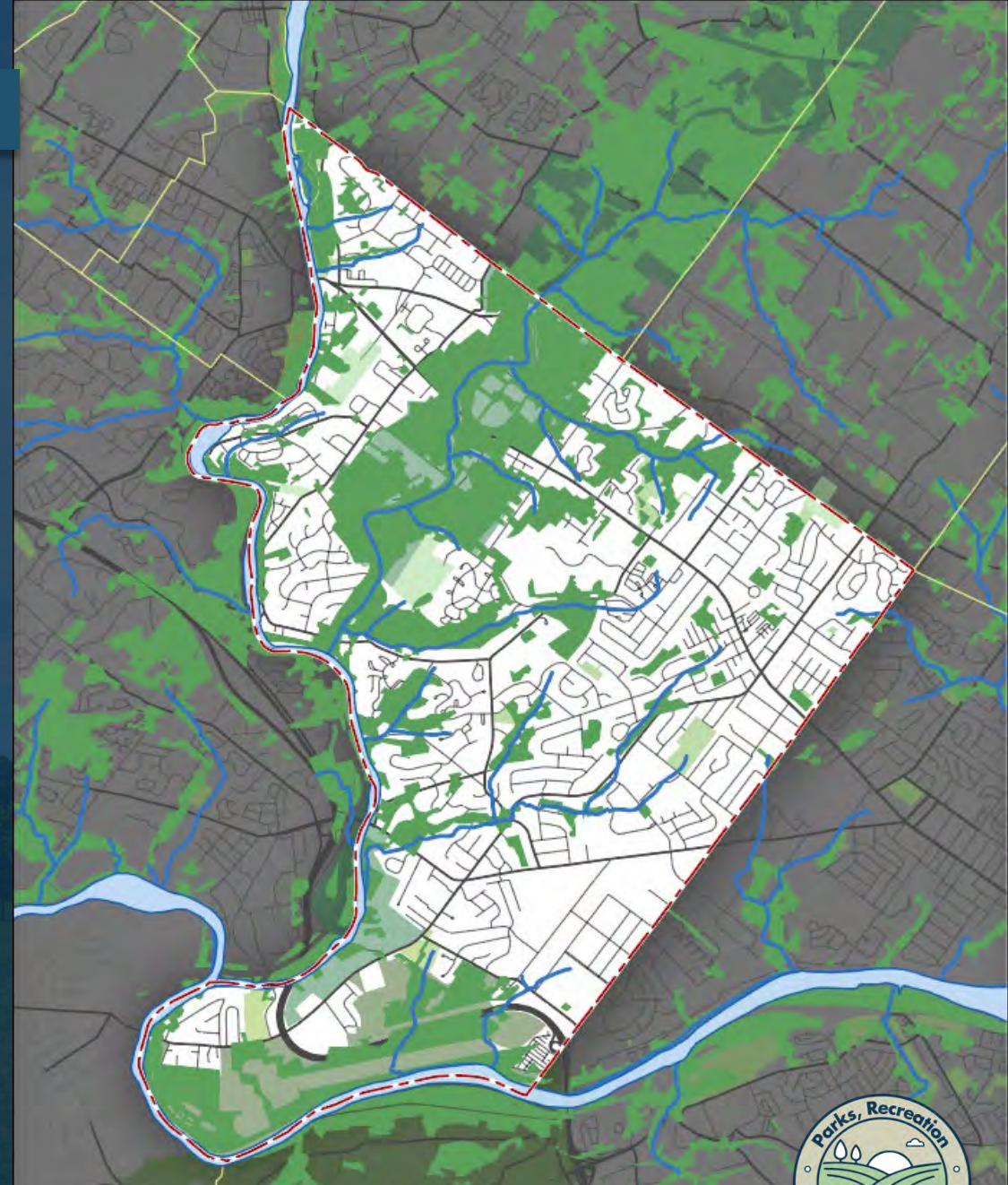
Stormwater Best Management Practices

- Stormwater Best Management Practices (BMPs) BMPs are structural or vegetative or practices which can treat, prevent or reduce water pollution by capturing stormwater runoff prior to reaching hydrologic resources.
- Examples:
 - Wetlands
 - Vegetated Swales
 - Riparian Buffers / Pond buffers
 - Green roof systems
 - Greenway Corridors



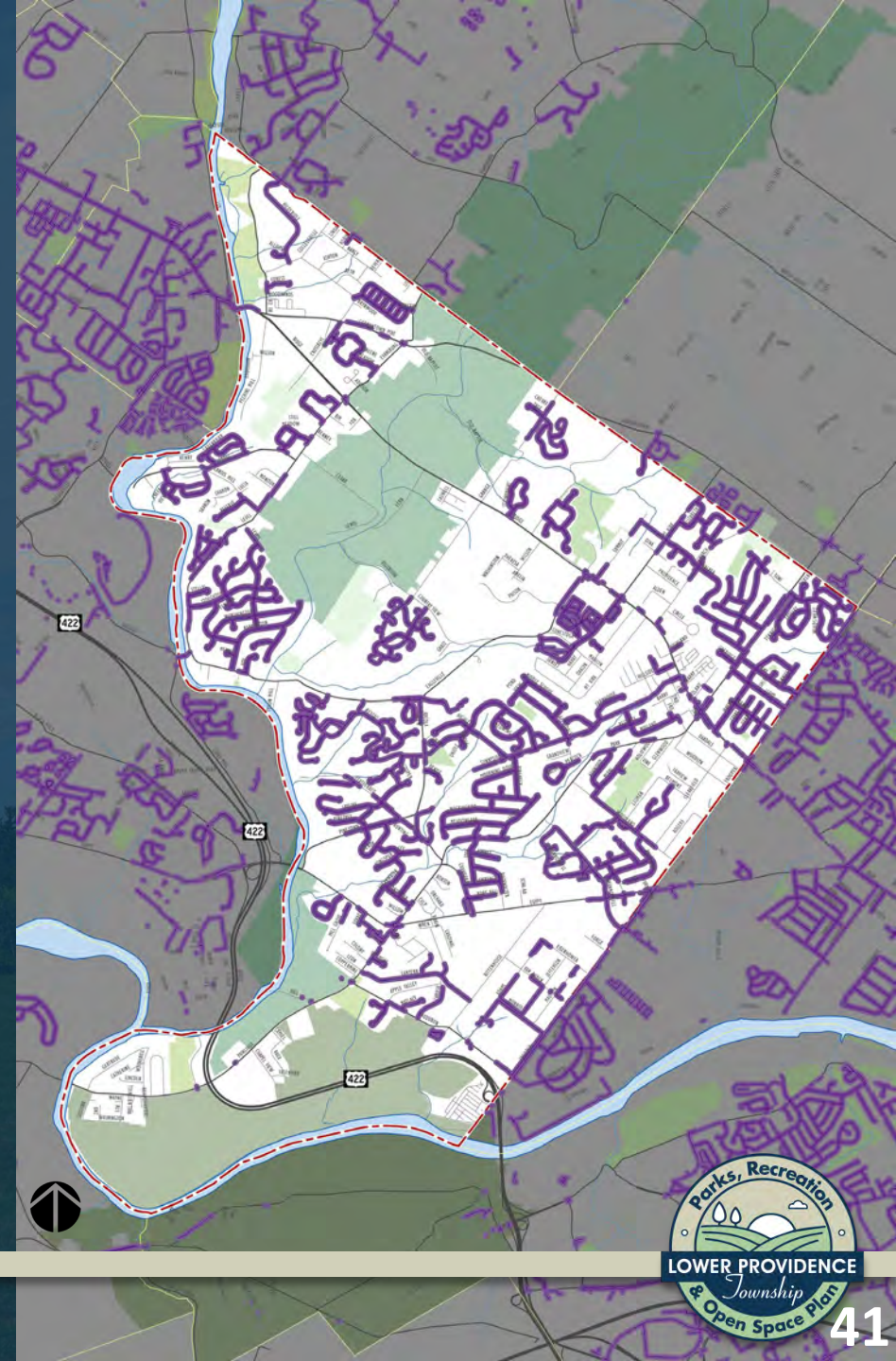
Greenways & Stormwater Management

- Greenways are corridors of land that generally parallel creeks and streams.
- The primary purpose to designate a “Greenway”:
 - Foster the preservation and protection of critical habitats
 - Protect and enhance the water quality
 - Greenways may or may not contain a trail or allow access
- In Lower Providence Township they are protected under ARTICLE XXXIV (Riparian Buffer Overlay Zone) This ordinance regulates land use to ensure natural resources are preserved and protected.

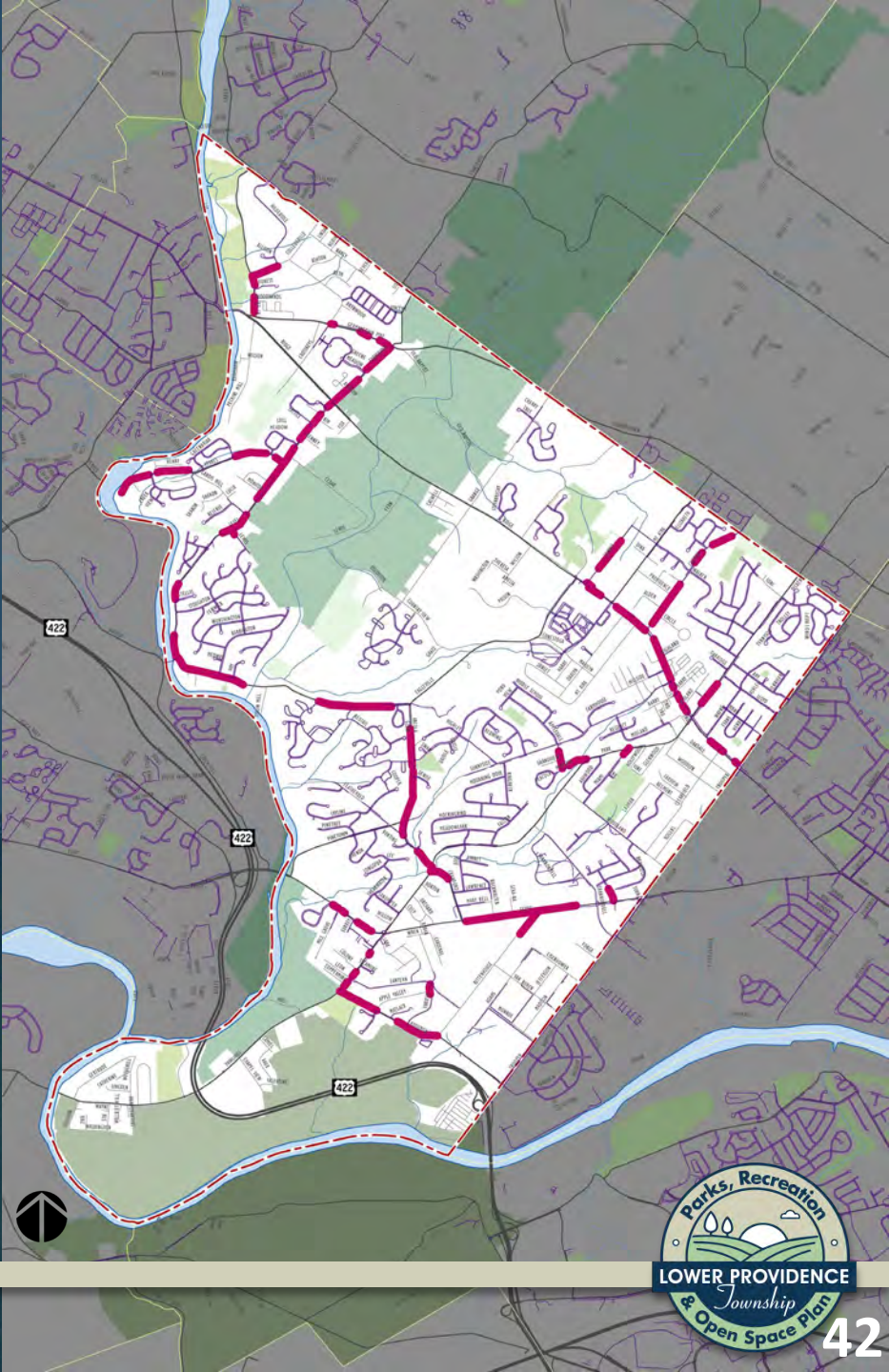


Existing Sidewalks

— Existing Sidewalk



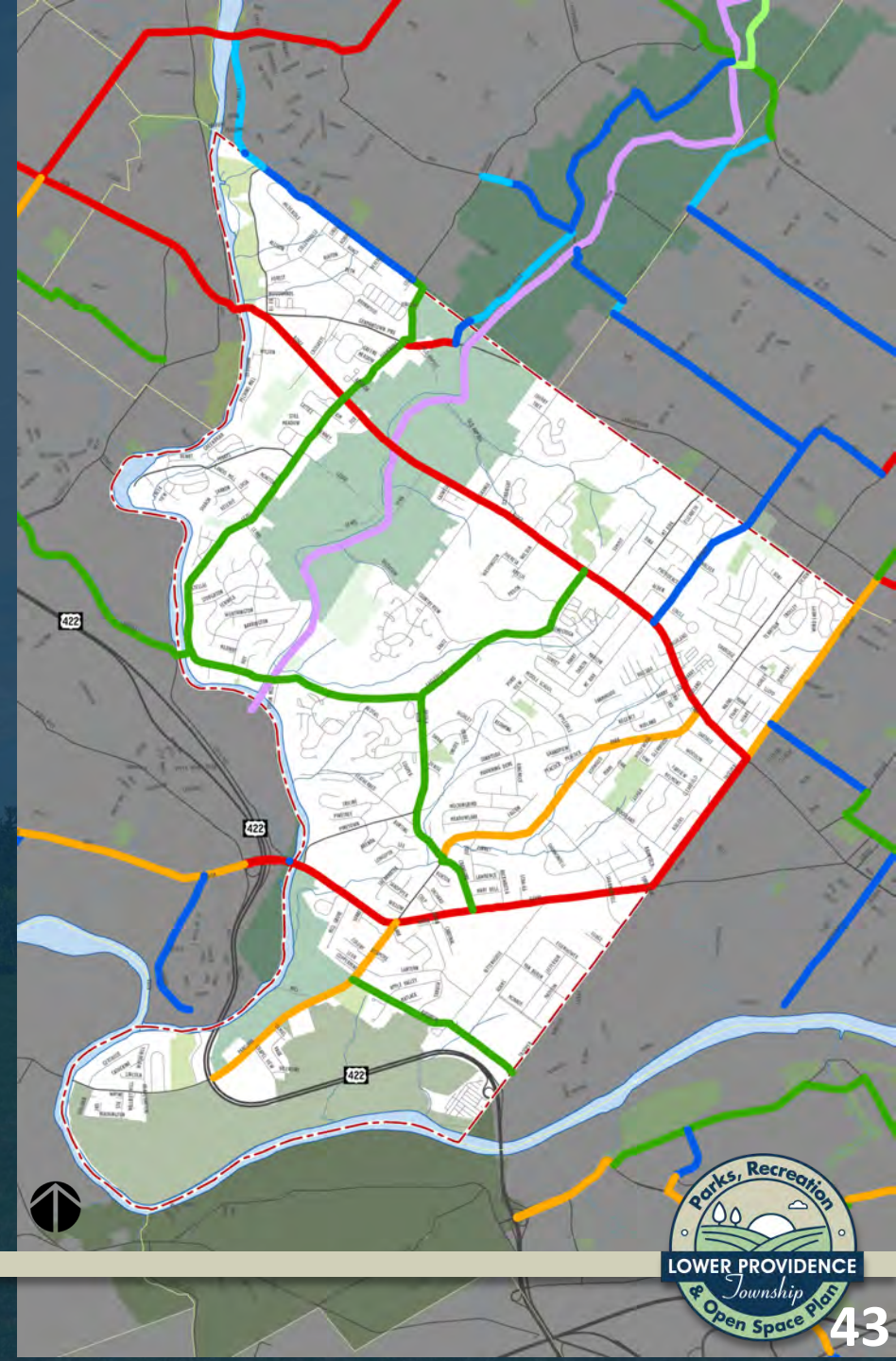
Sidewalk Gaps



Conceptual Bike Connections

- Bike Montco Routes

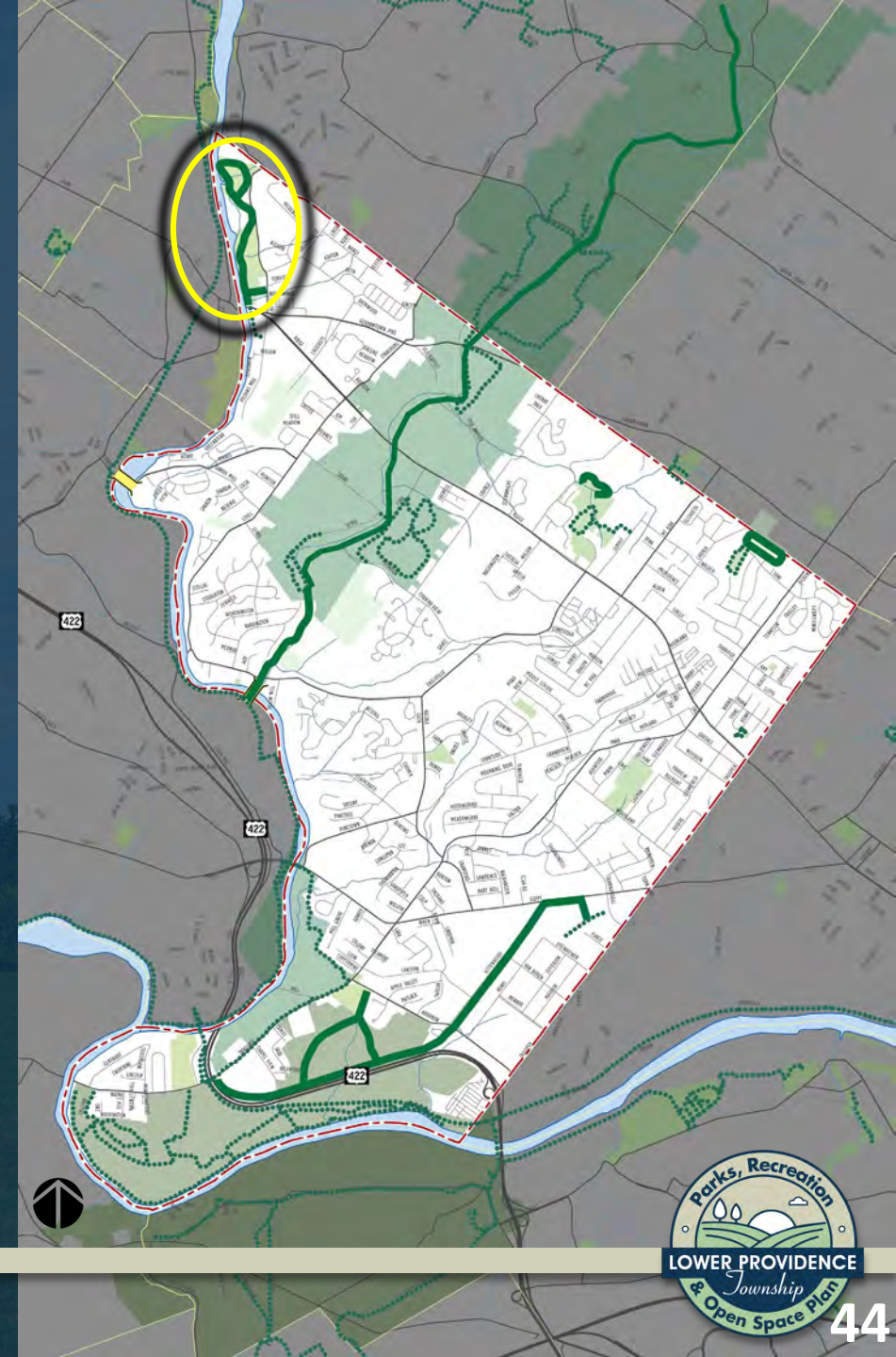
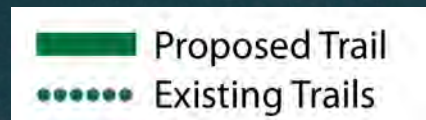
- Local Rural/Scenic
- Local Urban
- Collector Rural/Scenic
- Collector Urban
- Minor Arterial
- Principal Arterial
- Priority Bike Route
- Proposed Trail



Conceptual Trail Connections

Proposed Trails

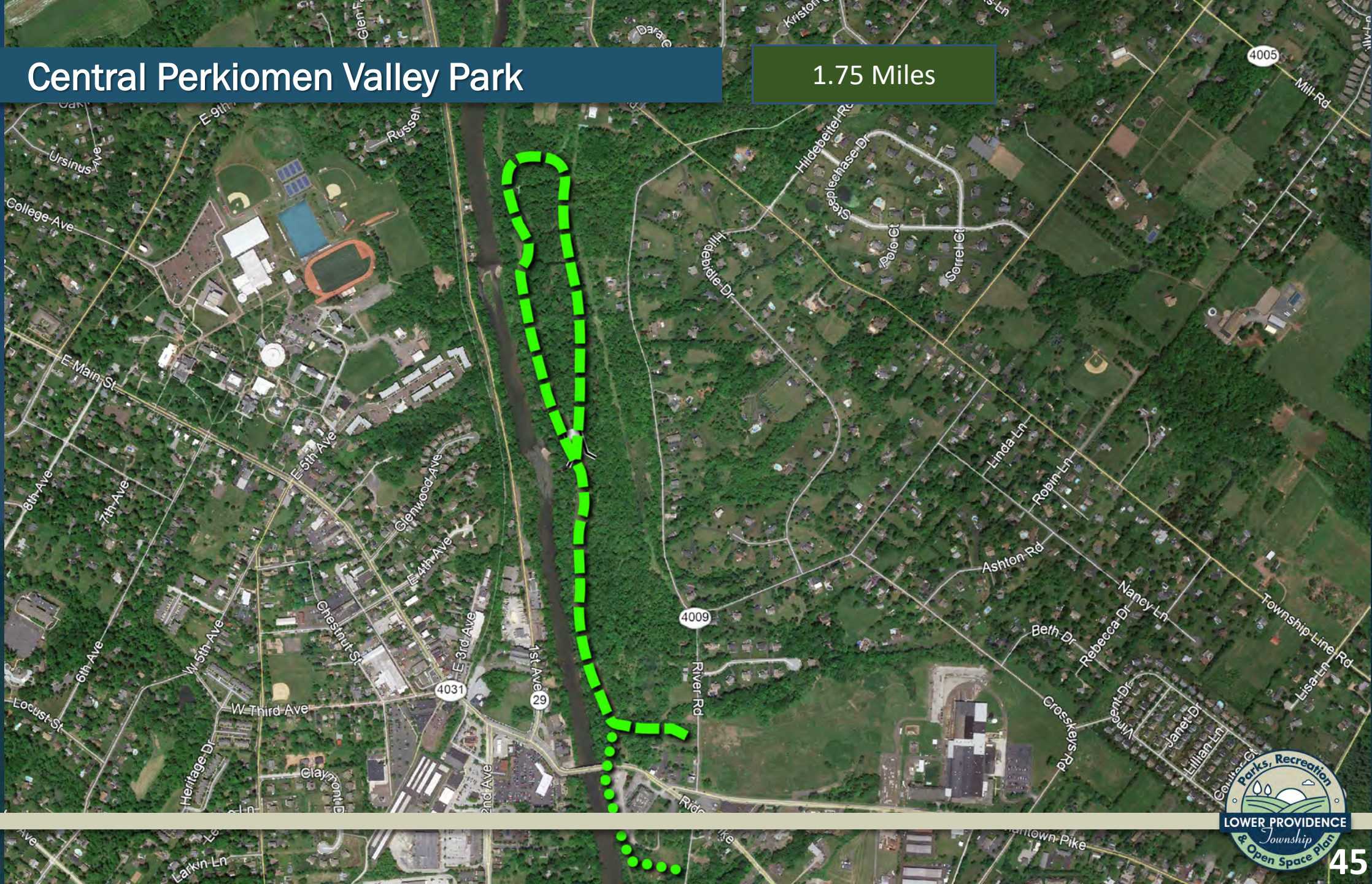
- Central Perkiomen Valley Park
- Evansburg State Park Connector
- Yerkes Road Pedestrian Bridge
- Eskie Park Loop Trail Extension
- Valley Forge National Park Connector
- Park Pointe Sidepath



Trail:

Central Perkiomen Valley Park

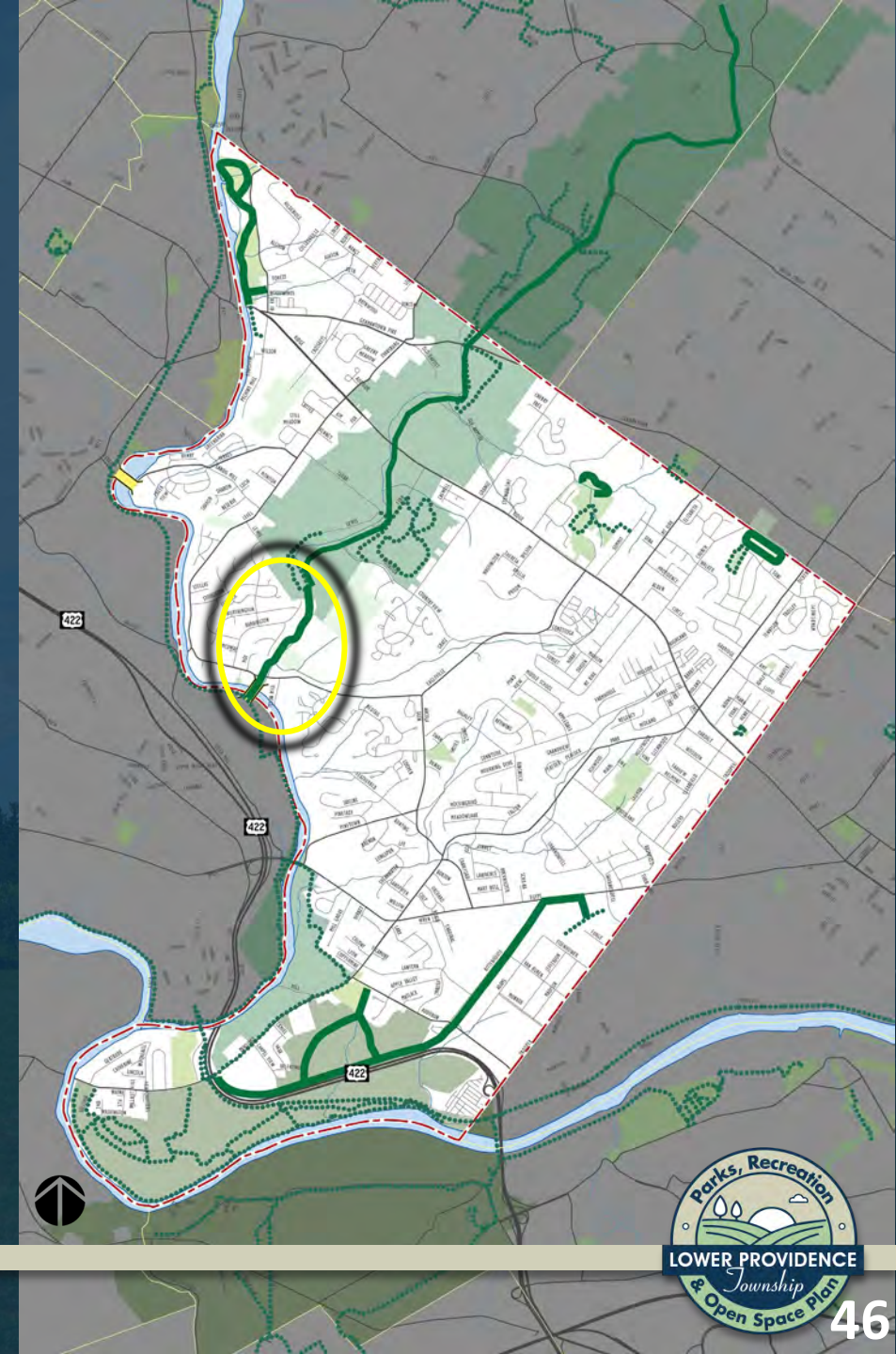
1.75 Miles



Conceptual Trail Connections

Proposed Trails

- Central Perkiomen Valley Park
- **Evansburg State Park Connector**
- Yerkes Road Pedestrian Bridge
- Eskie Park Loop Trail Extension
- Valley Forge National Park Connector
- Park Pointe Sidepath



Trail:

Evansburg State Park Connector

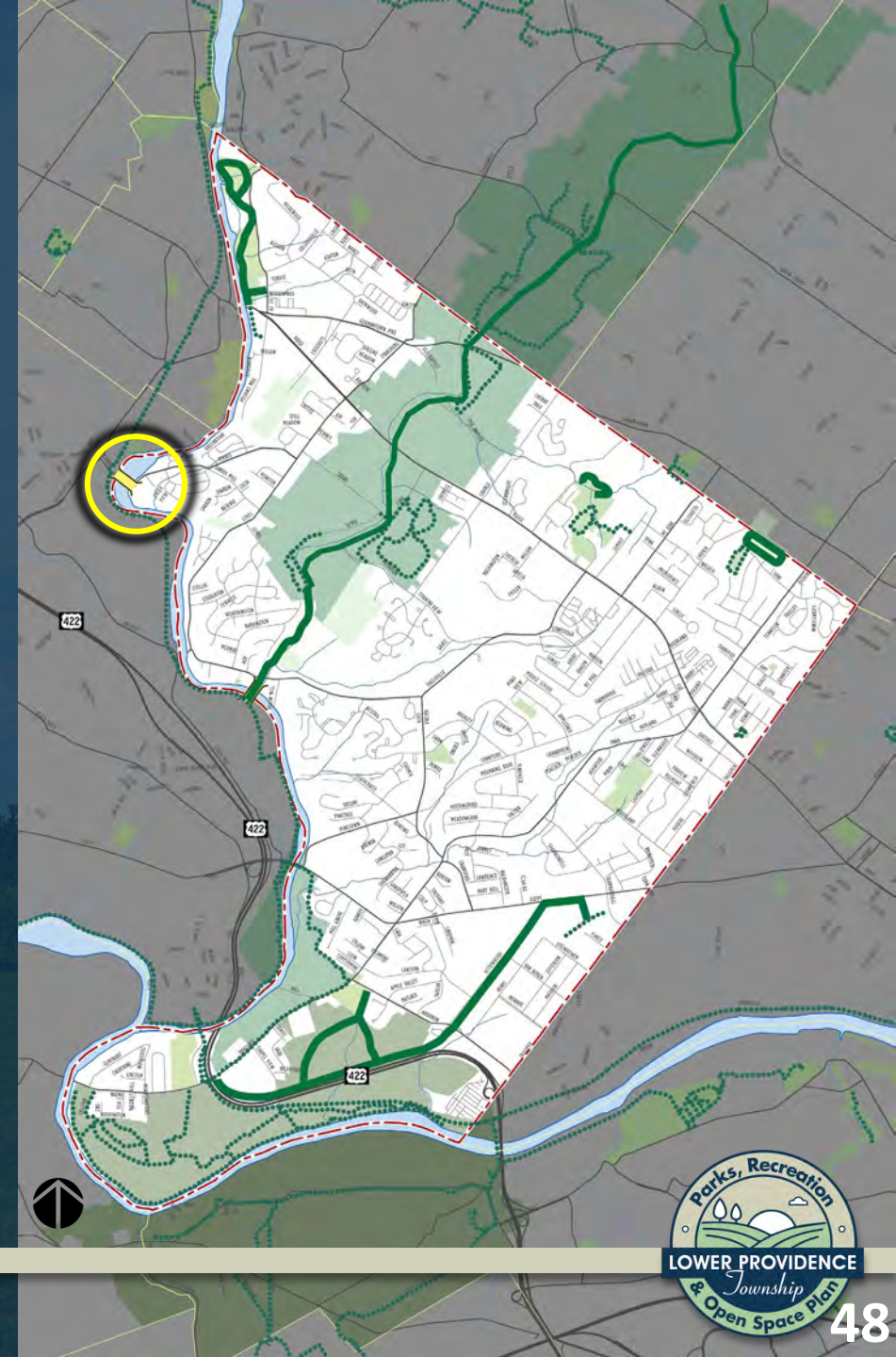
3.25+ Miles



Conceptual Trail Connections

Proposed Trails

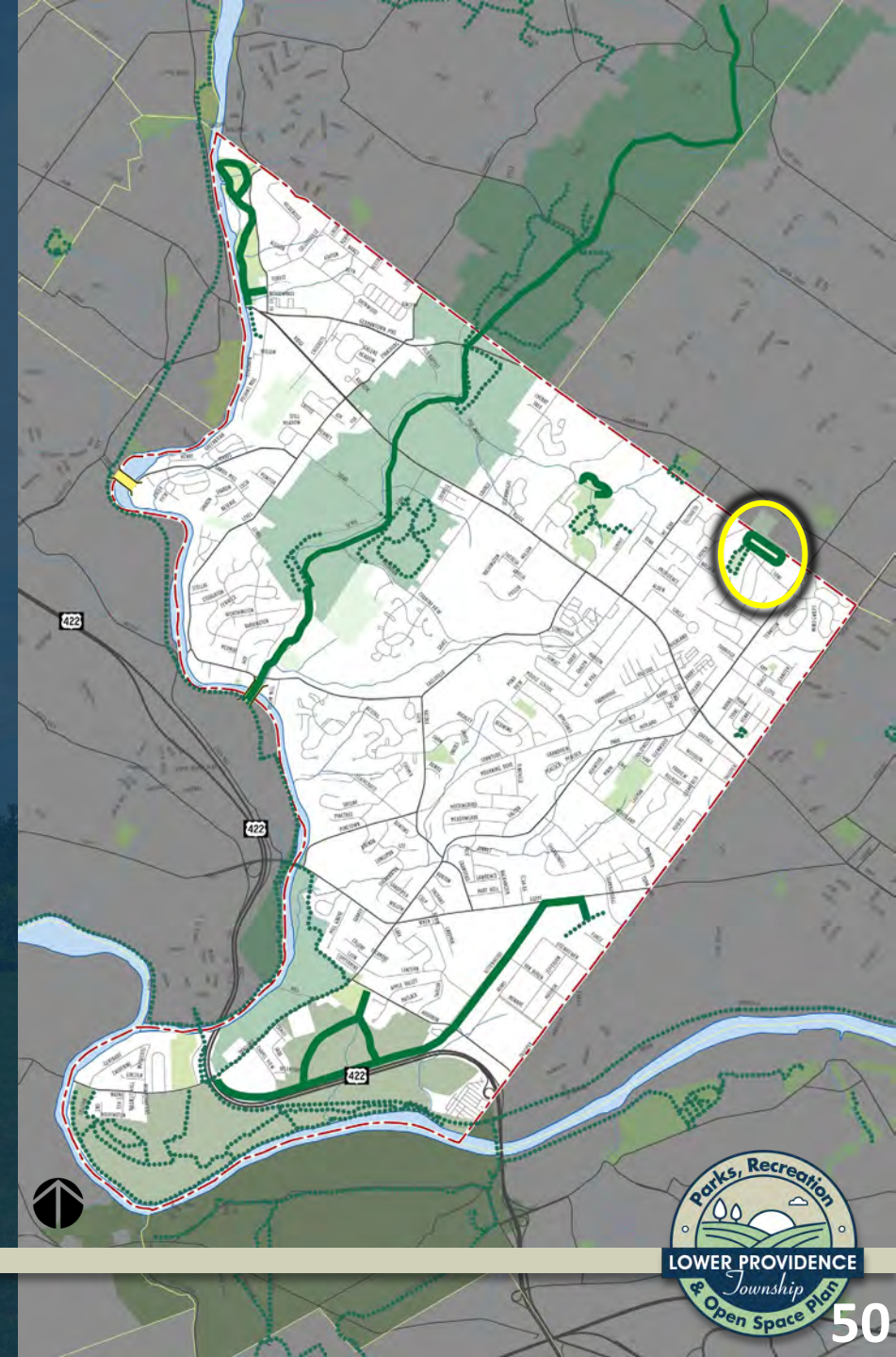
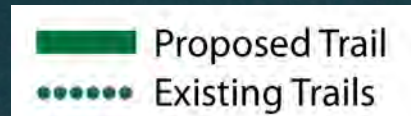
- Central Perkiomen Valley Park
- Evansburg State Park Connector
- **Yerkes Road Pedestrian Bridge**
- Eskie Park Loop Trail Extension
- Valley Forge National Park Connector
- Park Pointe Sidepath



Conceptual Trail Connections

Proposed Trails

- Central Perkiomen Valley Park
- Evansburg State Park Connector
- Yerkes Road Pedestrian Bridge
- **Eskie Park Loop Trail Extension**
- Valley Forge National Park Connector
- Park Pointe Sidepath



Trail: Eskie Park Loop Trail Extension

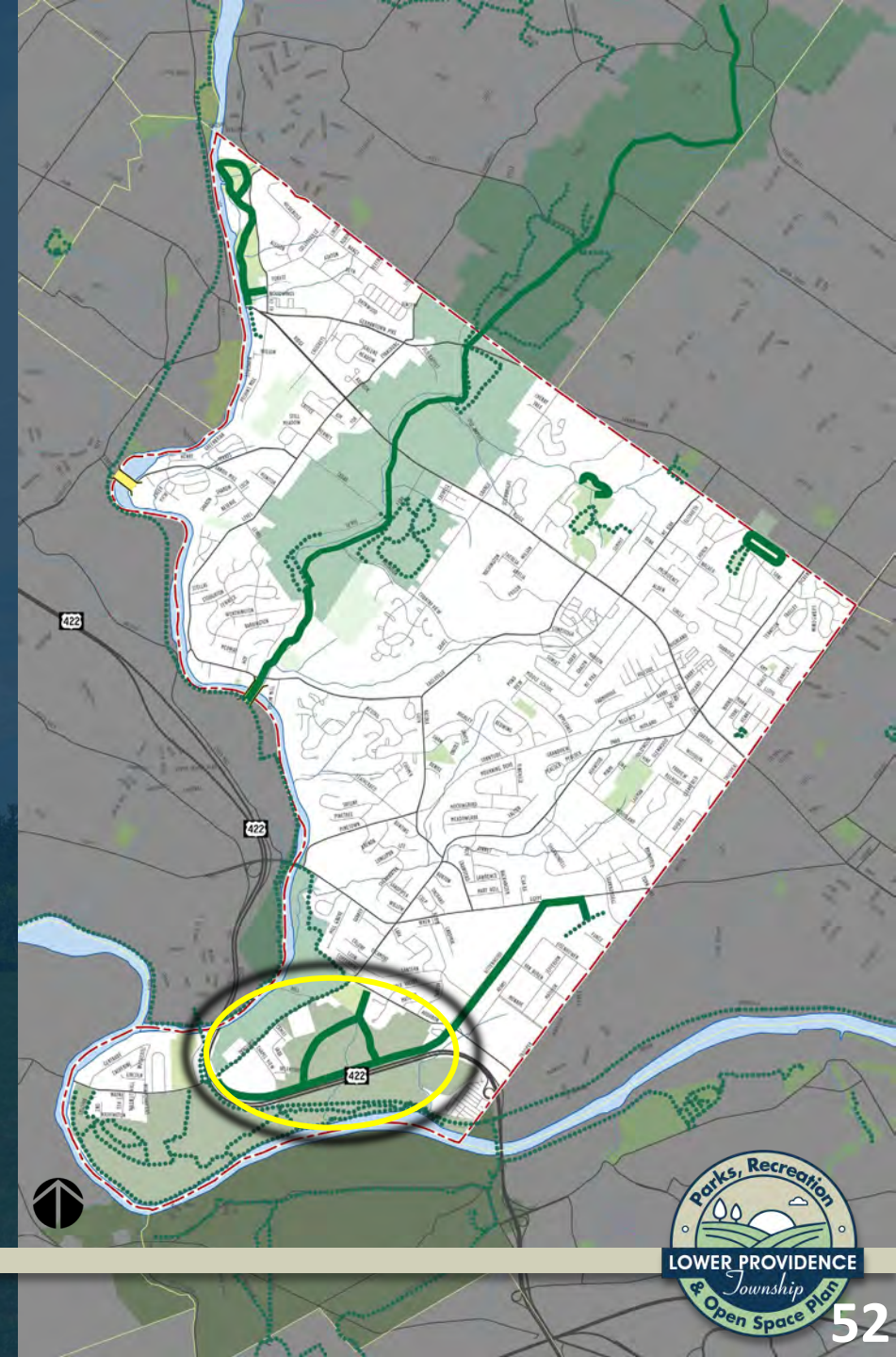
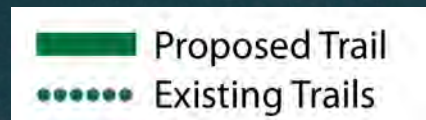
.65 Miles (1.1 Miles in total)



Conceptual Trail Connections

Proposed Trails

- Central Perkiomen Valley Park
- Evansburg State Park Connector
- Yerkes Road Pedestrian Bridge
- Eskie Park Loop Trail Extension
- **Valley Forge National Park Connector**
- Park Pointe Sidepath



Trail: Valley Forge National Park Connector

2.7 Miles

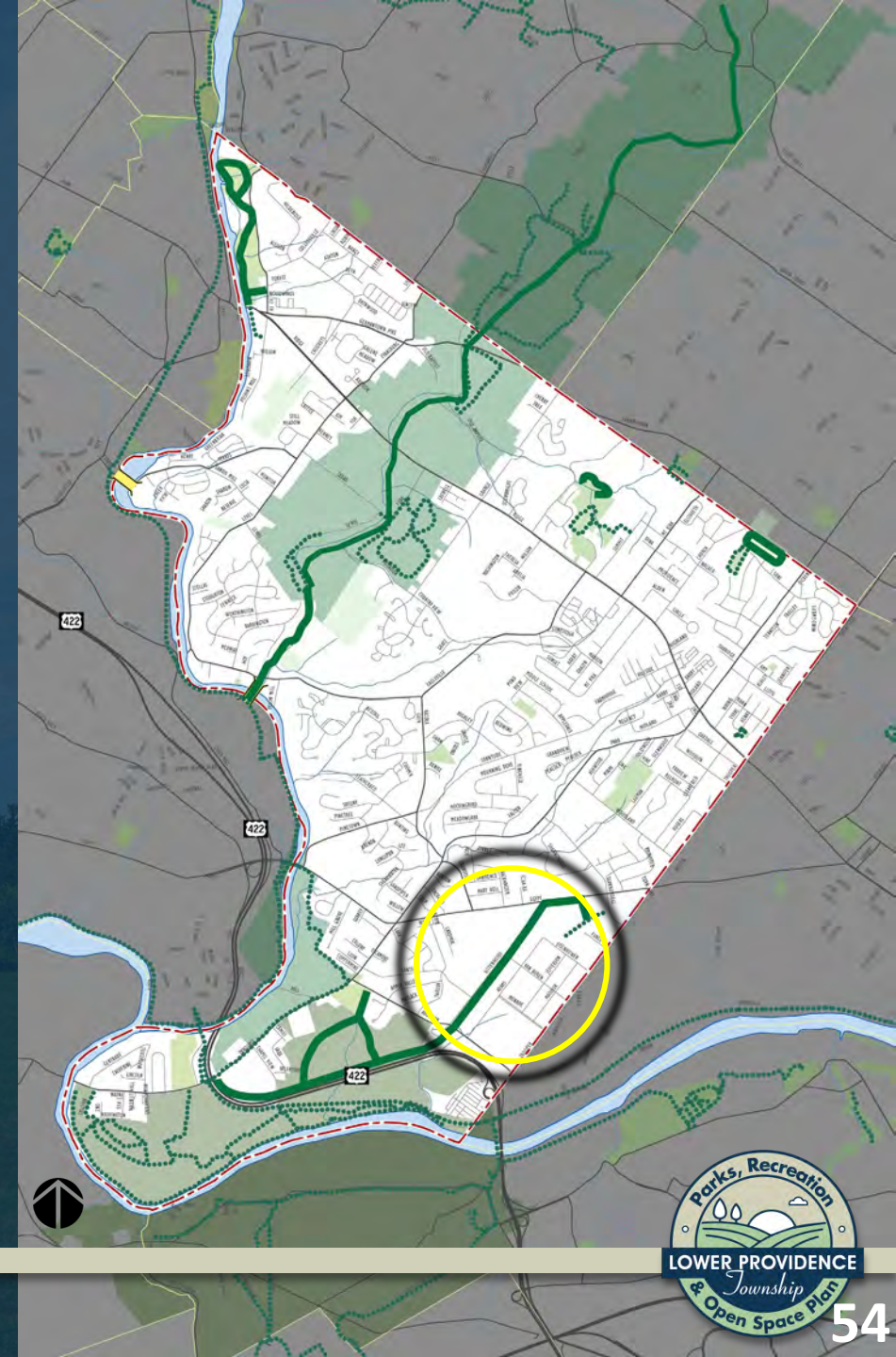
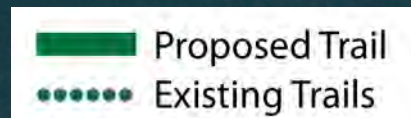
Connects
to Park
Pointe



Conceptual Trail Connections

Proposed Trails

- Central Perkiomen Valley Park
- Evansburg State Park Connector
- Yerkes Road Pedestrian Bridge
- Eskie Park Loop Trail Extension
- Valley Forge National Park Connector
- **Park Pointe Sidepath**



Trail: Park Pointe Sidepath

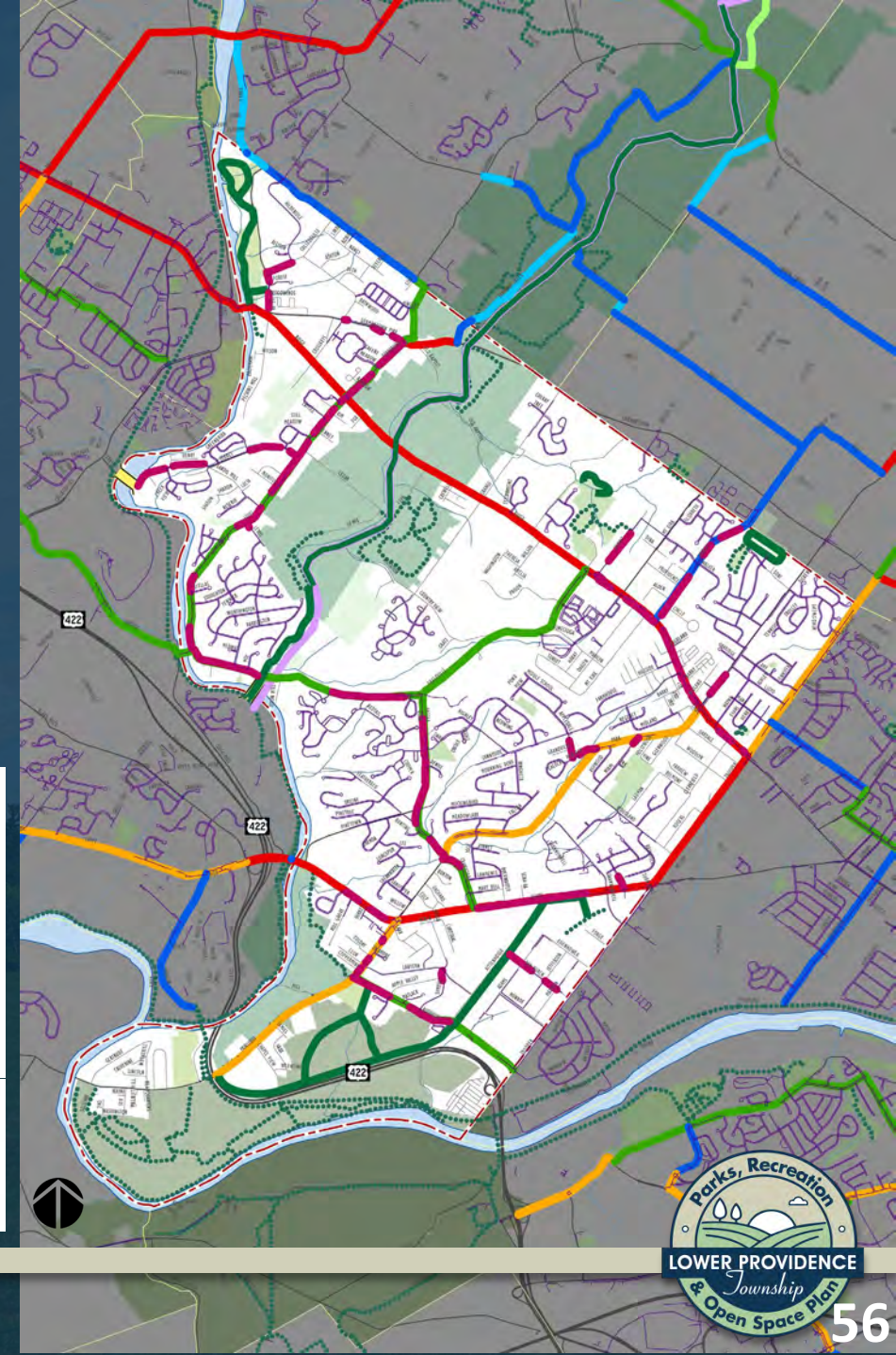
1.4 Miles

Connects
to Valley
Forge



Conceptual Trail Connections

- Connectivity Network – Work in progress, low stress routes to be examined
- Input needed from Public:
 - More possible trail alignments?
 - On road alignments, low stress preferable
 - Missing critical sidewalk gaps



Maintenance & Programming

Programming

- Recreation programs offered and well received, but opportunities exist:
- Additional programs particularly in the late fall, winter, and early spring
- Preliminary findings indicate indoor facilities are needed to provide cold weather seasonal programming
- Partnerships with other agencies (schools, county, private facilities), M.O.U.'s
- Review ways to attract “customers” to programs
- Third Party Contractors
- Additional outdoor recreation opportunities to enhance visitors experiences in the parks
- Additional public input is necessary to assist in determining the community wants and expectations concerning recreational programming



Maintenance & Programming

Finance

- Sound budgetary system is in place to record program revenues and expenses
- Additional revenues will be realized if/when additional programs are introduced
- Review of program fees will assist in determining programming fees, TBD

Maintenance

- Solid maintenance practices exist
- Adherence to Consumer Product Safety Commission guidelines are followed in all parks, minor deviations were found
- ADA compliance evaluation of each park will be undertaken to determine deficient areas
- Dedicated seasonal park maintenance workers would enhance the work effort



What is an Official Map?

- As permitted by the PA Municipal Planning Code, the Official Map is a combined map and ordinance designed to implement the goals and community vision set forth in the Comprehensive Plan.
- The Official Map shows the locations of planned future public lands and facilities such as **transportation, recreational parks and trails, and open space.**
- The Official Map expresses a municipality's interest in acquiring these lands for public purposes at some future time.

— PENNSYLVANIA. BUILT TO ADVANCE. —



Pennsylvania Municipalities Planning Code

Act of 1968, P.L.805, No.247 as reenacted and amended



PA pennsylvania
GOVERNOR'S CENTER FOR
LOCAL GOVERNMENT SERVICES



Official Map - Elements

The map may include but need not be limited to:

- Existing and proposed public streets, watercourses and public grounds, including widenings, narrowings, extensions, reductions, openings or closing of same.
- Existing and proposed **public parks, playgrounds and open space** reservations
- Existing and proposed **pedestrian ways (trails) and easements**
- Flood control areas, **floodways and floodplains, stormwater management areas** and drainage easements.

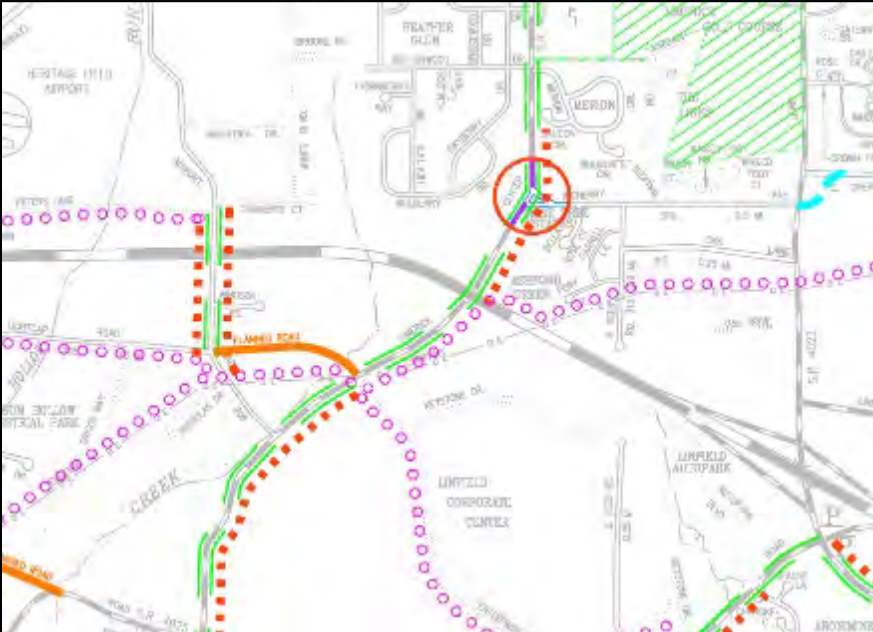


Official Map - Benefits

- Helps to focus limited financial resources on projects that meet and advance community goals.
- Helps to make improvements such as the street network improvements, **intersection improvements, protecting natural areas, providing more green space, recreation facilities, trails, and sidewalks.**
- Saves time and money by **informing property owners and developers of municipal goals and intentions** in advance of land development plans.
- **Effective negotiation tool for municipalities**, helping to ensure development is compatible with and supportive of public goals.
- Gives municipalities advantage in **securing grants.**

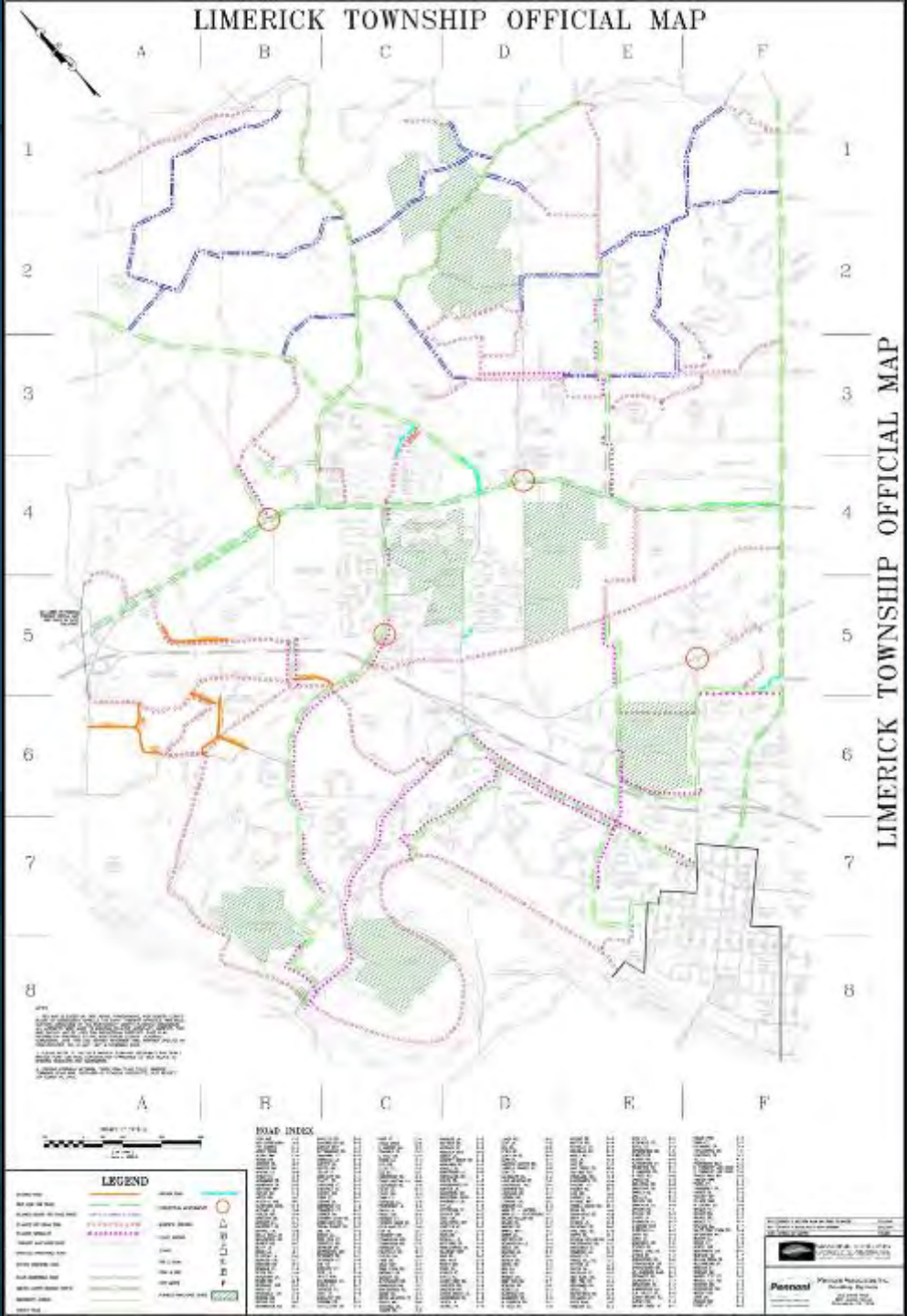


Official Map – Example (Limerick Township)



LEGEND

PLANNED ROAD		REGIONAL ROAD	
BIKE LANE (ON ROAD)		INTERSECTION IMPROVEMENTS	
PLANNED SHARE-THE-ROAD ROUTE		MUNICIPAL BUILDING	
PLANNED OFF-ROAD TRAIL		POLICE STATION	
PLANNED SIDEWALKS		SCHOOL	
TOWNSHIP MAINTAINED ROAD		FIRE STATION	
PRIVATELY MAINTAINED ROAD		PARK & RECREATION	
UTILITY EASEMENT ROAD		POST OFFICE	
STATE MAINTAINED ROAD		PLANNED PARK/OPEN SPACE	
LIMITED ACCESS HIGHWAY (STATE)			
EMERGENCY ACCESS			
COUNTY ROAD			



Next Steps

- **Public Meeting 3 (with Board of Supervisors) :**

Thursday, April 15, 2021 7:00 PM-9:00 PM

Public Opinion Survey

<https://www.surveymonkey.com/r/LowerProvidenceParks>



- Wikimapping

wikimapping.com/Lower-Providence.html

	Meeting Title	Meeting Date
2020	Open Space Committee Meeting #1	Wednesday, August 12th
	Open Space Committee Meeting #2	Thursday, Sept 10
	Public Meeting #1	Monday, October 26
	Open Space Committee Meeting #3	Wednesday, November 18
	Focus Group Meeting #1 - Active Sports	Late November
	Focus Group Meeting #2 - Passive Activities	Late November
	Focus Group Meeting #3 - Senior Activities	Early December
	Focus Group Meeting #4- Cultural, Arts, Religious	Early December
2021	Open Space Committee Meeting #4	Wednesday, January 6
	Public Meeting #2	Tuesday, January 26
	Open Space Committee Meeting #5	Wednesday, February 3
	Open Space Committee Meeting #6	Thursday, March 25
	Key Person Interviews (12)	Dates TBD
	Web Based Survey - write and administer	Oct 1 through April 1
	Wiki - Mapping interactive community mapping	Oct 1 through April 1
	Public Meeting #3 with Board of Supervisors	Thursday, April 15
	Open Space Committee Meeting #7	Tuesday June 1
	Public Meeting #4	Thursday, June 24

Next Steps

Thursday April 15, 2021: Public Meeting 3 Link:
<https://tinyurl.com/lowerprovidence3>

Lower Providence Township is working on a Parks, Recreation & Open Space Plan and would like to know where you want to see open space and recreation improvements.

3 WAYS TO GET INVOLVED:

- ### Attend a Meeting

Let your voice be heard. At public meetings we'll discuss the Lower Providence Township Parks, Recreation & Open Space Plan, review progress, and get your feedback. Meetings will be held virtually unless otherwise noted.

 - Public Meeting #1 will take place Monday September 28, 2020 at 7:00pm
Join at: <https://tinyurl.com/lowerprovidence1>
 - Public Meeting #2 will take place Tuesday January 26, 2021 at 7:00pm
Join at: <https://tinyurl.com/lowerprovidence2>
 - Public Meeting #3 will take place Thursday April 15, 2021 at 7:00pm
Join at: <https://tinyurl.com/lowerprovidence3>
 - Public Meeting #4 will take place Thursday June 24, 2021 at 7:00pm
Join at: <https://tinyurl.com/lowerprovidence4>

After joining on the Teams app or website and signing in, you will enter the meeting. For information on accessing the meeting, go to <https://tinyurl.com/lowerprovidenceparks>
- ### Take the Survey

Obtaining feedback from the community is vital to the planning process. We want to know your opinions on how to improve open space & recreation in Lower Providence. The survey can be completed at the web address below. Hard copies of the survey may be picked up and returned completed to the Lower Providence Administration Building, 100 Parklane Dr, Eagleville, PA 19403

surveymonkey.com/r/LowerProvidenceParks
- ### Comment on WikiMapping

Place comments directly on the easy to use digital map of Lower Providence. Let us know existing & favorite trails, challenging intersections & roadways, important destinations, and desired park and open space improvements.

wikimapping.com/Lower-Providence.html

	Meeting Title	Meeting Date
2020	Open Space Committee Meeting #1	Wednesday, August 12th
	Open Space Committee Meeting #2	Thursday, Sept 10
	Public Meeting #1	Monday, October 26
	Open Space Committee Meeting #3	Wednesday, November 18
	Focus Group Meeting #1 - Active Sports	Late November
	Focus Group Meeting #2 - Passive Activities	Late November
	Focus Group Meeting #3 - Senior Activities	Early December
	Focus Group Meeting #4- Cultural, Arts, Religious	Early December
2021	Open Space Committee Meeting #4	Wednesday, January 6
	Public Meeting #2	Tuesday, January 26
	Open Space Committee Meeting #5	Wednesday, February 3
	Open Space Committee Meeting #6	Thursday, March 25
	Key Person Interviews (12)	Dates TBD
	Web Based Survey - write and administer	Oct 1 through April 1
	Wiki - Mapping interactive community mapping	Oct 1 through April 1
	Public Meeting #3 with Board of Supervisors	Thursday, April 15
	Open Space Committee Meeting #7	Tuesday June 1
	Public Meeting #4	Thursday, June 24

Public Involvement Poster

Thank You

Contact Information:

SIMONE COLLINS LANDSCAPE ARCHITECTURE - 610.239.7601

Peter Simone, RLA, FASLA, Principal

psimone@simonecollins.com

Pankaj Jobanputra, AICP, Project Manager

pjobanputra@simonecollins.com

Geoff Creary, Land. Arch., Connectivity Expert / Graphics

gcreary@simonecollins.com

Joseph Wallace, Staff Landscape Architect

jwallace@simonecollins.com

Michelle Armour, Staff Landscape Architect

marmour@simonecollins.com



Discussion/ Comments / Questions

Next Steps for Project Team

- Develop Draft Plan
- Conduct:
 - Committee Meetings
 - Key Person Interviews
 - Focus Groups

Next Public Meeting:

Thursday April 15, 2021: Public Meeting 3 Link:

<https://tinyurl.com/lowerprovidence3>

