



Committee Meeting 1

August 12, 2020



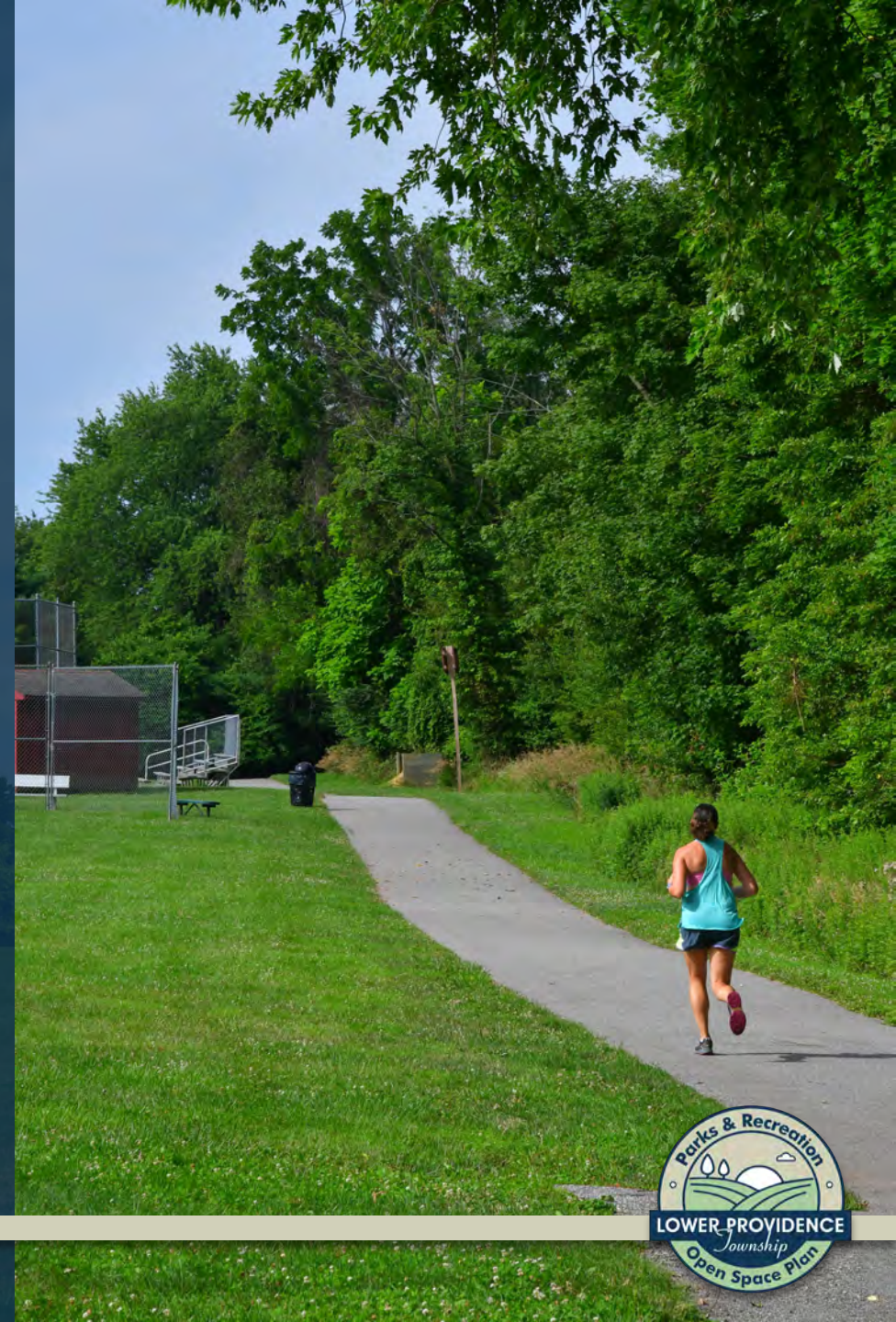
Agenda

- Open Space Committee
- Consultant Team & Experience
- Why Plan?
- Project Schedule
- Project Scope
- Site Reconnaissance – July 20, 2020
- Township Tour
- Existing Data
- Public Opinion Survey & WikiMapping
- Brainstorming & Discussion
- Next Steps



Open Space Committee

- Colleen Eckman - Supervisor
- Jean Akers - Chair for Open Space Committee and member of Park Board Committee
- Susan LaPenta – Township Planning Commission
- Bill Brooke – Township Planning Commission
- Erin DiPaolo - Township Park Board Committee
- Beth Ann Mazza – Township Park Board Committee
- Katherine McGrath- Township Park Board Committee – Student Representative
- Jane Delaney – Parks and Recreation Director
- Donald Delamater- Township Manager



Consultant Team

SIMONE COLLINS LANDSCAPE ARCHITECTURE - 610.239.7601

- **Peter Simone, RLA, FASLA, Principal**
psimone@simonecollins.com
- **Pankaj Jobanputra, AICP, Project Manager**
pjobanputra@simonecollins.com
- **Geoff Creary, Land. Arch., Trails & Connectivity Expert / Graphics**
gcreary@simonecollins.com
- **Joseph Wallace, Staff Landscape Architect**
jwallace@simonecollins.com
- **Michelle Armour, Staff Landscape Architect**
marmour@simonecollins.com

CERTIFIED PARK & RECREATIONAL PROFESSIONAL

- **Patrick Stasio, CPRP**

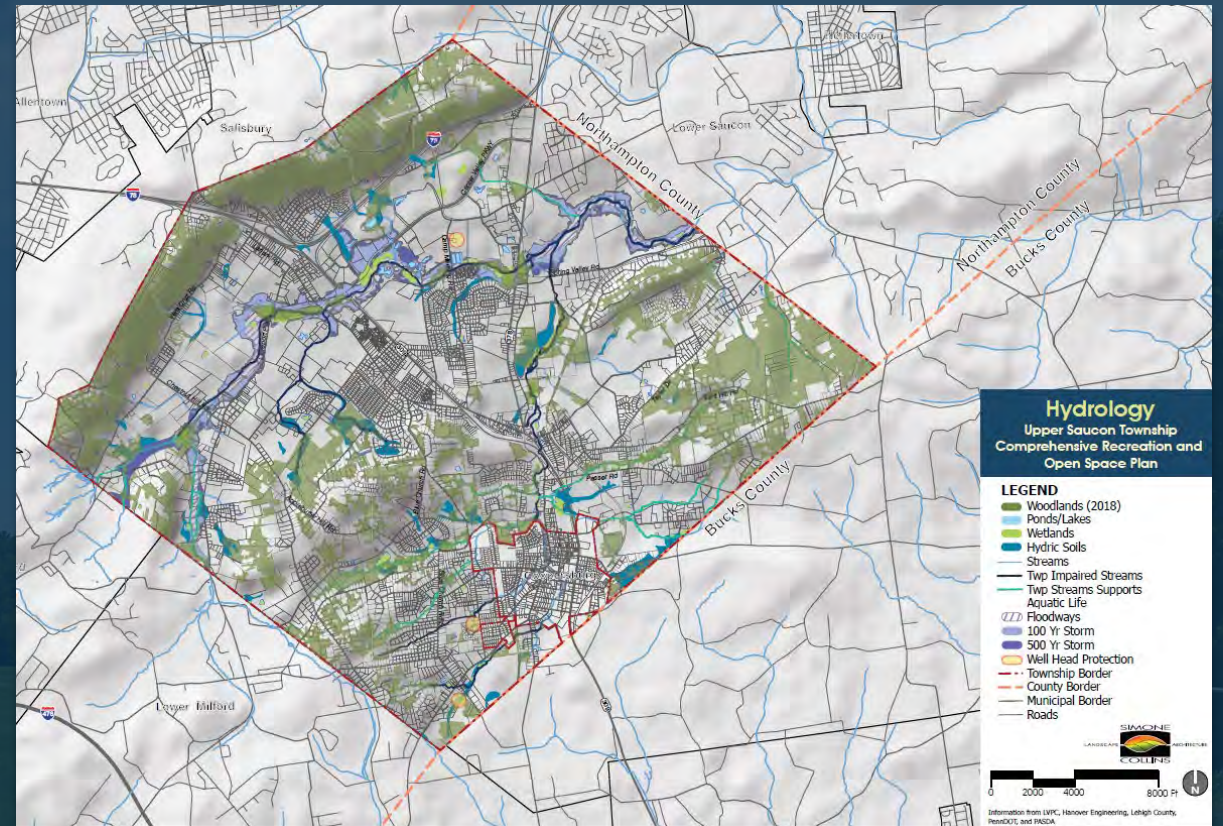
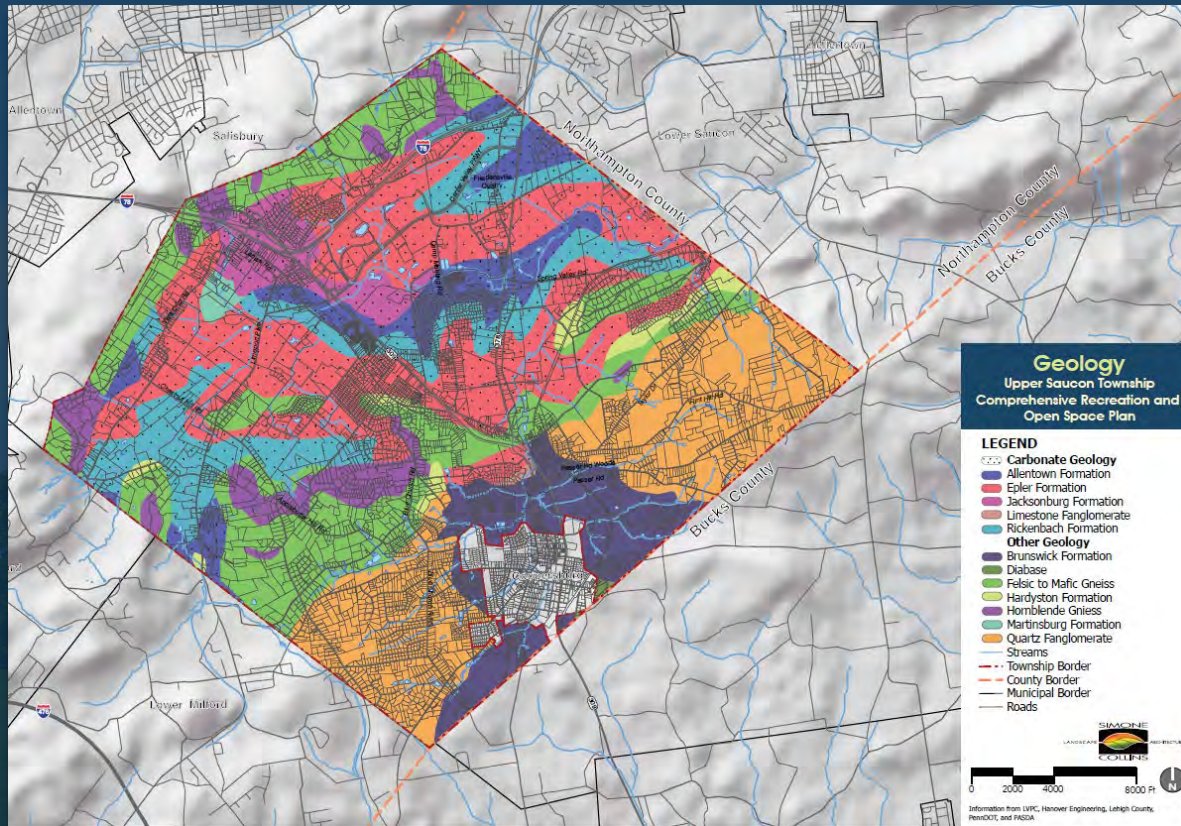
SPOTTS STEVENS & MCCOY

- **Kent Morey, P.E., MS4 expert**



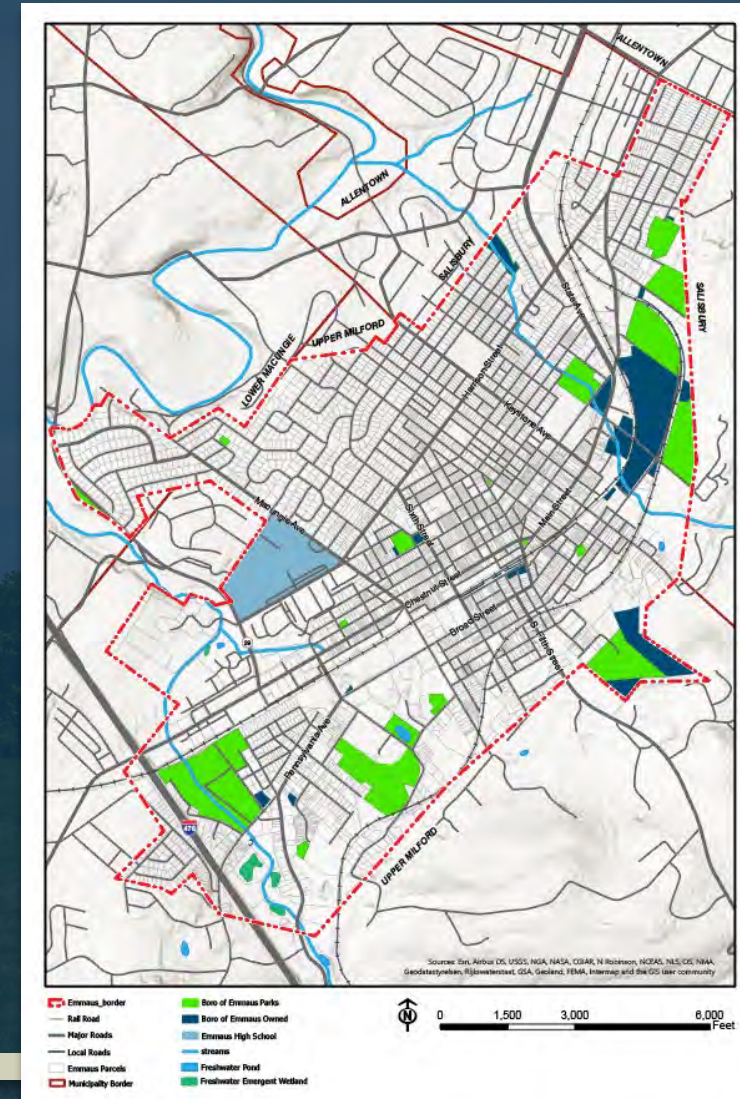
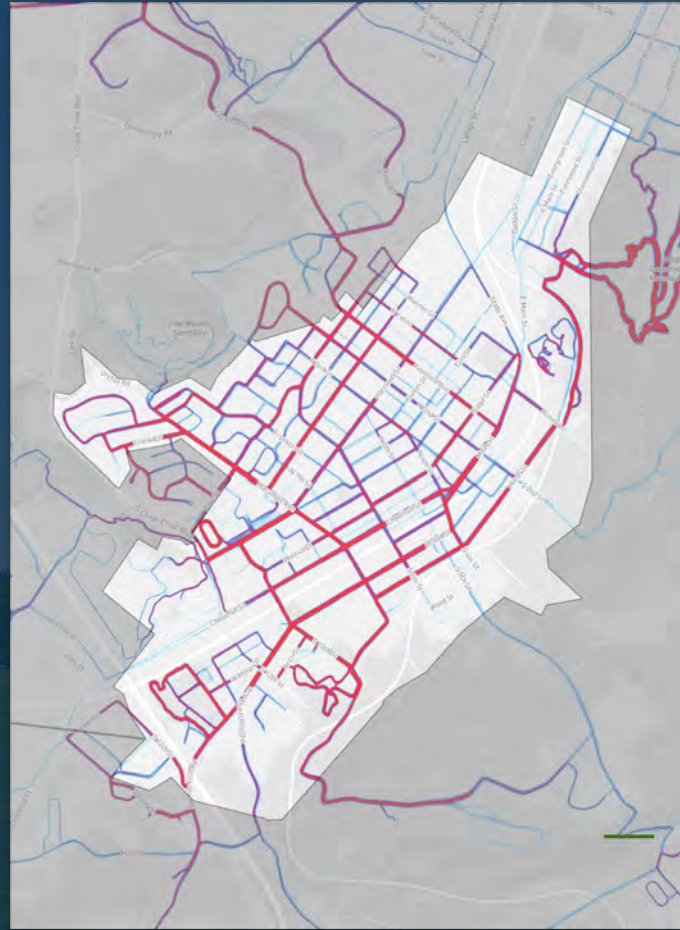
Consultant Experience

- Upper Saucon Open Space & Recreation Plan



Consultant Experience

- Emmaus Borough Comprehensive Recreation Plan



Why Plan?

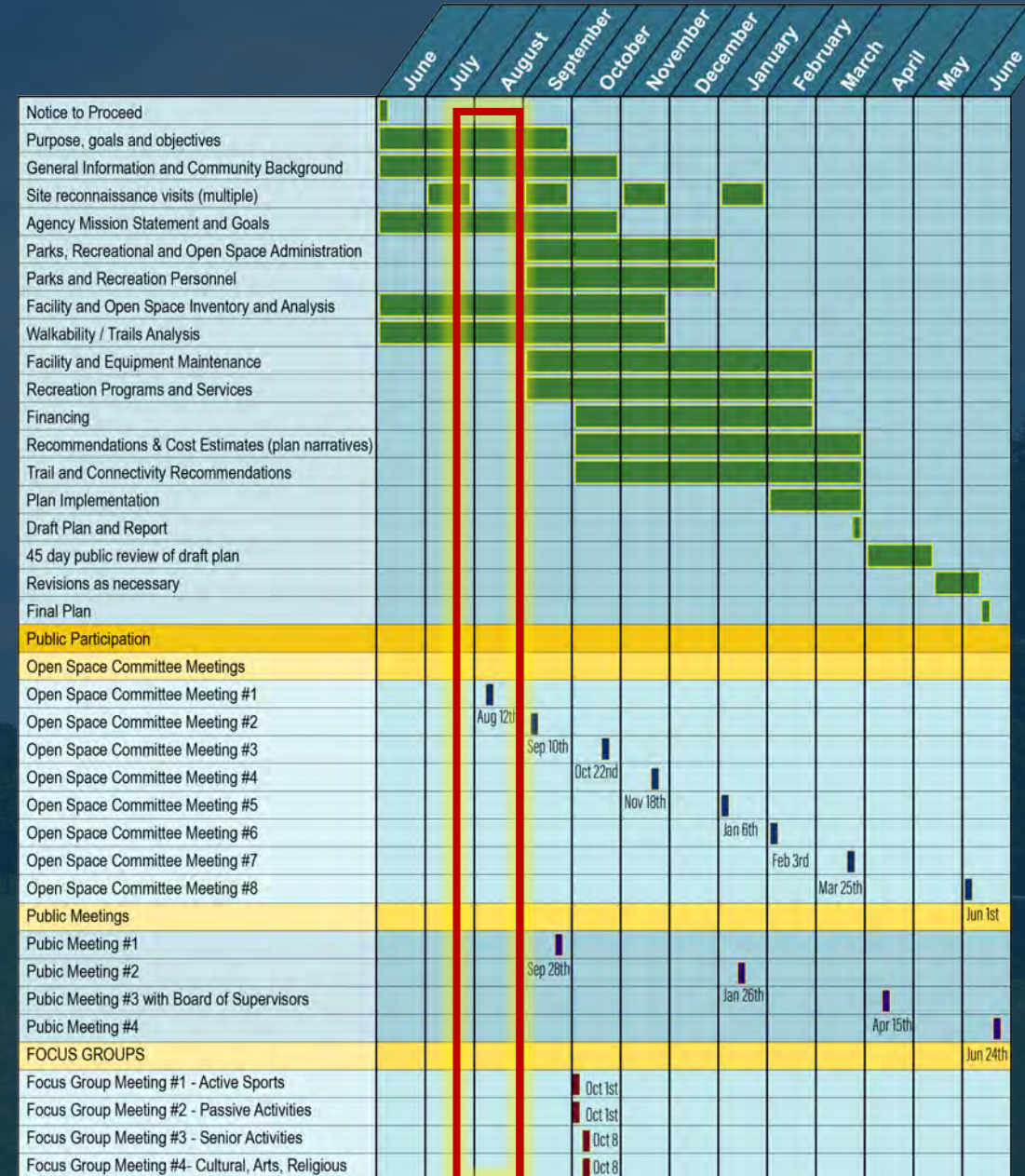
Township park and recreation facilities are the most visible component of local government. Residents interact with Lower Providence Township through parks and recreation more than any other township facility and program.

- Plan for current needs and future growth of Lower Providence parks, open space, and recreation system
- The community facilities are essential green infrastructure that provide physical, spiritual & health benefits
- Makes your community competitive to attract businesses & residents
- Can be utilized as a planning tool to guide decision making for the Township for the next 10 to 20 years for improved facilities, non-motorized connectivity (trails), preserve open space and enhance recreational programming, maintenance and staffing.



Project Schedule

	Meeting Title	Meeting Date
2020	Open Space Committee Meeting #1	Wednesday, August 12th
	Open Space Committee Meeting #2	Thursday, Sept 10
	Public Meeting #1	Monday, September 28
	Focus Group Meeting #1 - Active Sports	Thursday, Oct 1
	Focus Group Meeting #2 - Passive Activities	Thursday, Oct 1
	Focus Group Meeting #3 - Senior Activities	Thursday, Oct 8
	Focus Group Meeting #4- Cultural, Arts, Religious	Thursday, Oct 8
	Open Space Committee Meeting #3	Thursday, Oct 22
	Open Space Committee Meeting #4	Wednesday, November 18
	Open Space Committee Meeting #5	Wednesday, January 6
2021	Public Meeting #2	Tuesday, January 26
	Open Space Committee Meeting #6	Wednesday, February 3
	Open Space Committee Meeting #7	Thursday, March 25
	Key Person Interviews (12)	Dates TBD
	Web Based Survey - write and administer	Oct 1 through April 1
	Wiki - Mapping interactive community mapping	Oct 1 through April 1
	Public Meeting #3 with Board of Supervisors	Thursday, April 15
	Open Space Committee Meeting #8	Tuesday June 1
	Public Meeting #4	Thursday, June 24

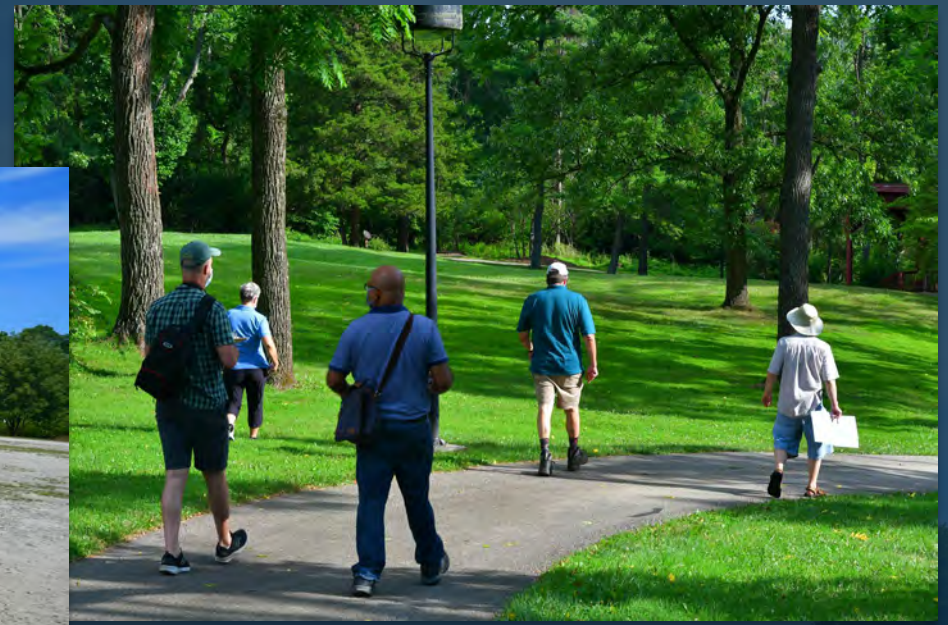


Project Scope

- Existing conditions inventory and data collection
- Activities and facilities analysis
- Site reconnaissance
- Public participation
 - 4 committee meetings
 - 4 public meetings
 - Key persons interview
 - Public opinion survey
- Vision goals and objectives
- Report with recommendations for open space, recreational facilities and programming, and multi-modal and greenway connections
- Implementation strategies
- Regulations, management, planning and financing

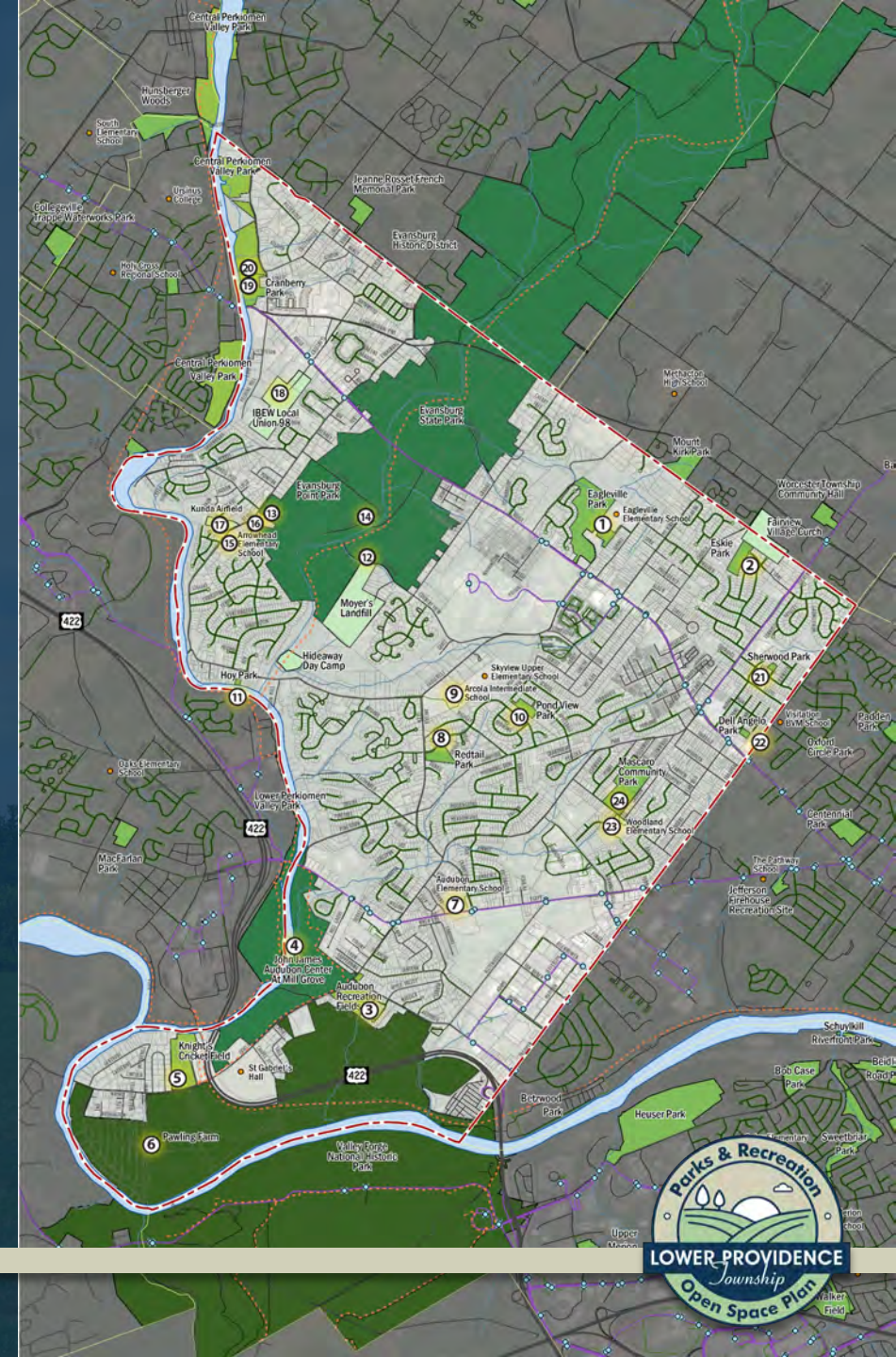


Site Reconnaissance – July 20



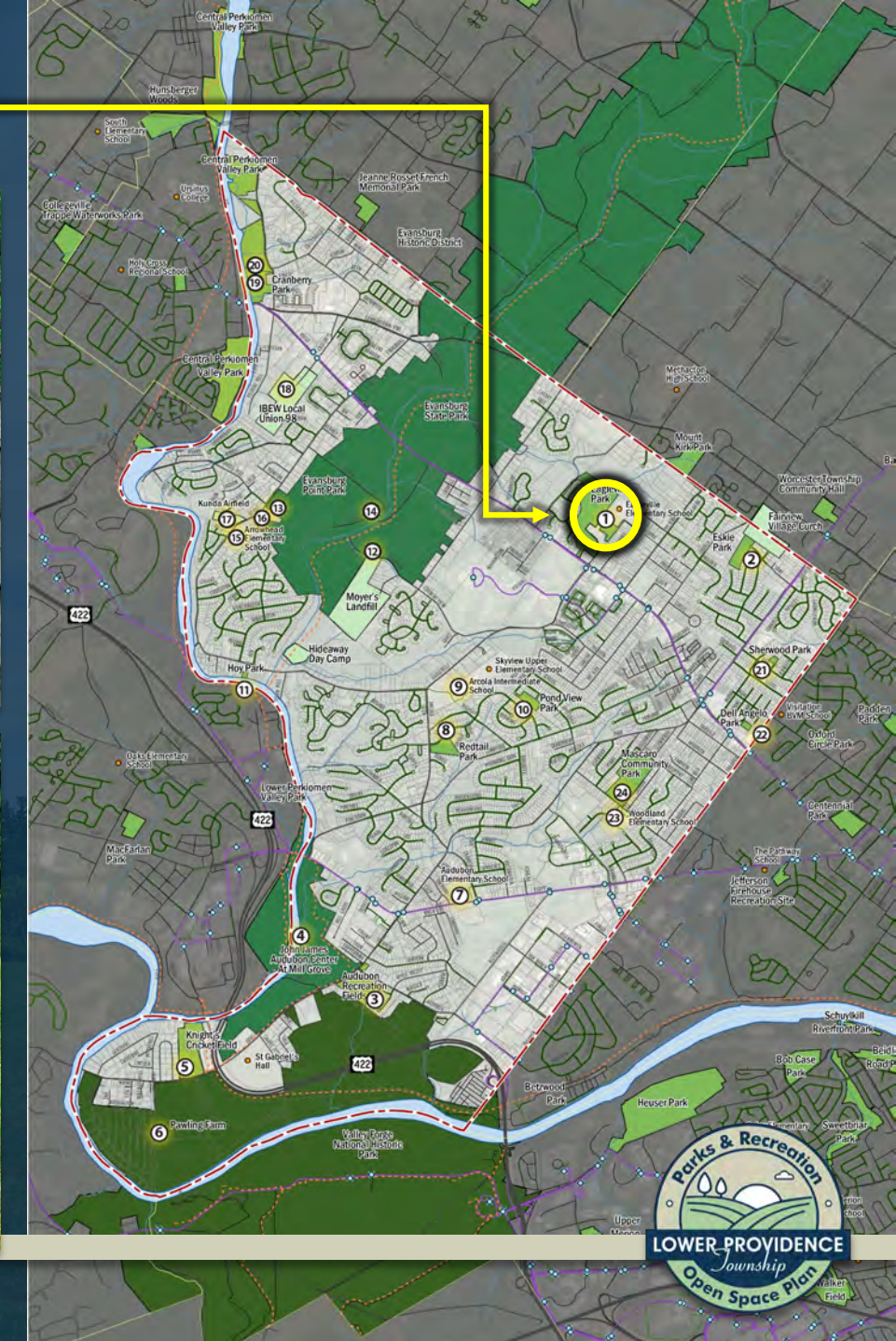
Township Tour

- Eagleville Park (twp)
- Eskie Park (twp)
- Audubon Rec Association Fields (twp)
- Gabriel's Field / Knight's Cricket Field (twp)
- Valley Forge / Pawling Farm / Pawling Sycamore / River Trail (federal)
- Audubon Elementary School (MSD)
- Redtail Park (twp)
- Arcola Intermediate School (MSD)
- Pond View Park (twp)
- Hoy Park (twp)
- Evansburg Point Park (twp)
- Evansburg State Park (state)
- Arrowhead Elementary School (MSD)
- Level Road School House (twp)
- IBEW lands off Ridge Pike and Level Rd (private)
- Cranberry Park (twp)
- Central Perkiomen Valley Park (county)
- Sherwood Park (twp)
- Dell Angelo Park (twp)
- Woodland Elementary School (MSD)
- Mascaro Memorial Field and Community Park (twp)



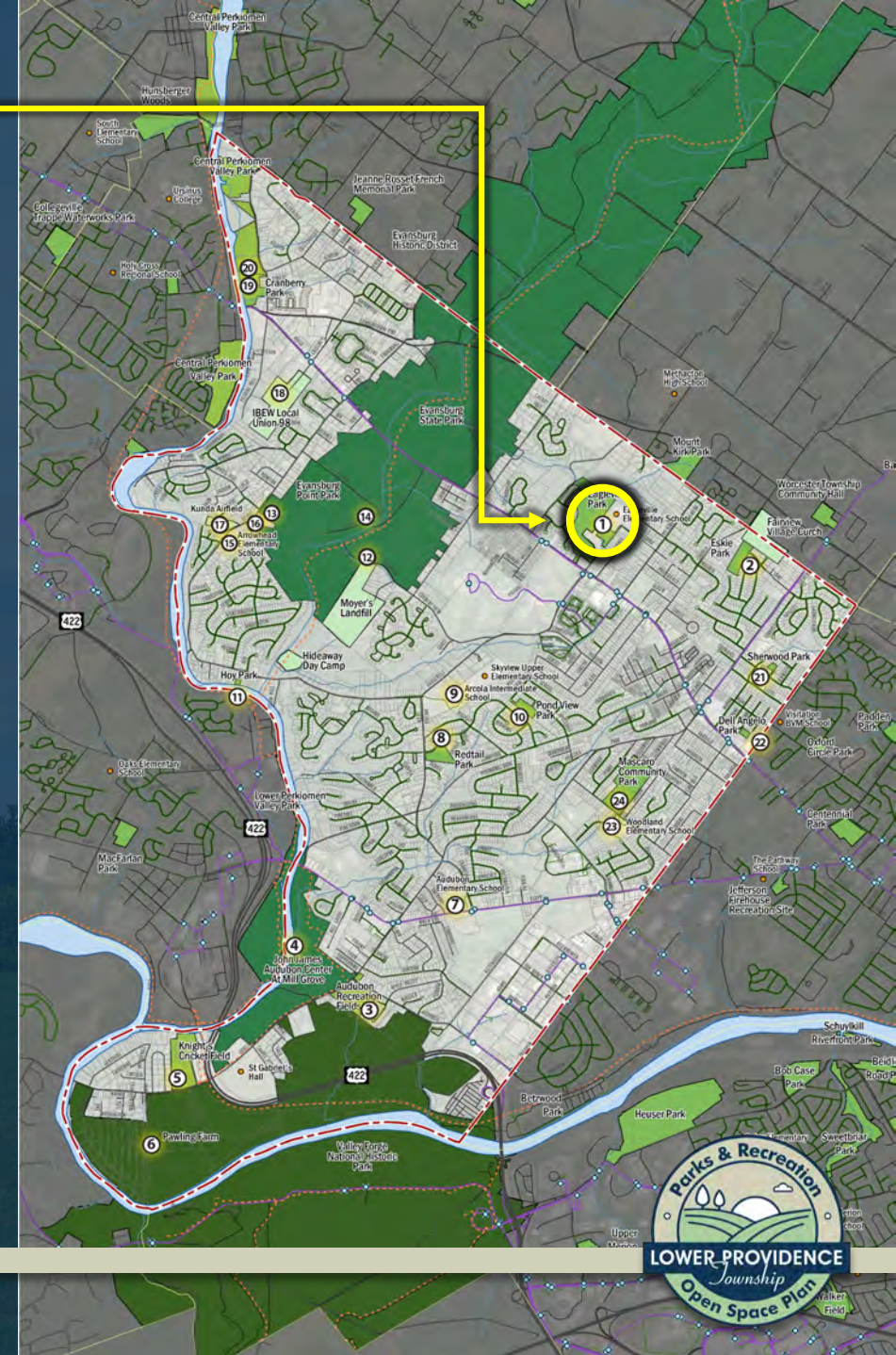
Eagleville Park

- **Municipal**
- 1 Baseball field
- 1 Football Field
- 1 Basketball Court
- 4 Tennis Courts
- 2 Bocce Courts
- 2 Shuffleboard Courts
- Playground
- Pavilion
- Amphitheater
- Nature Trails



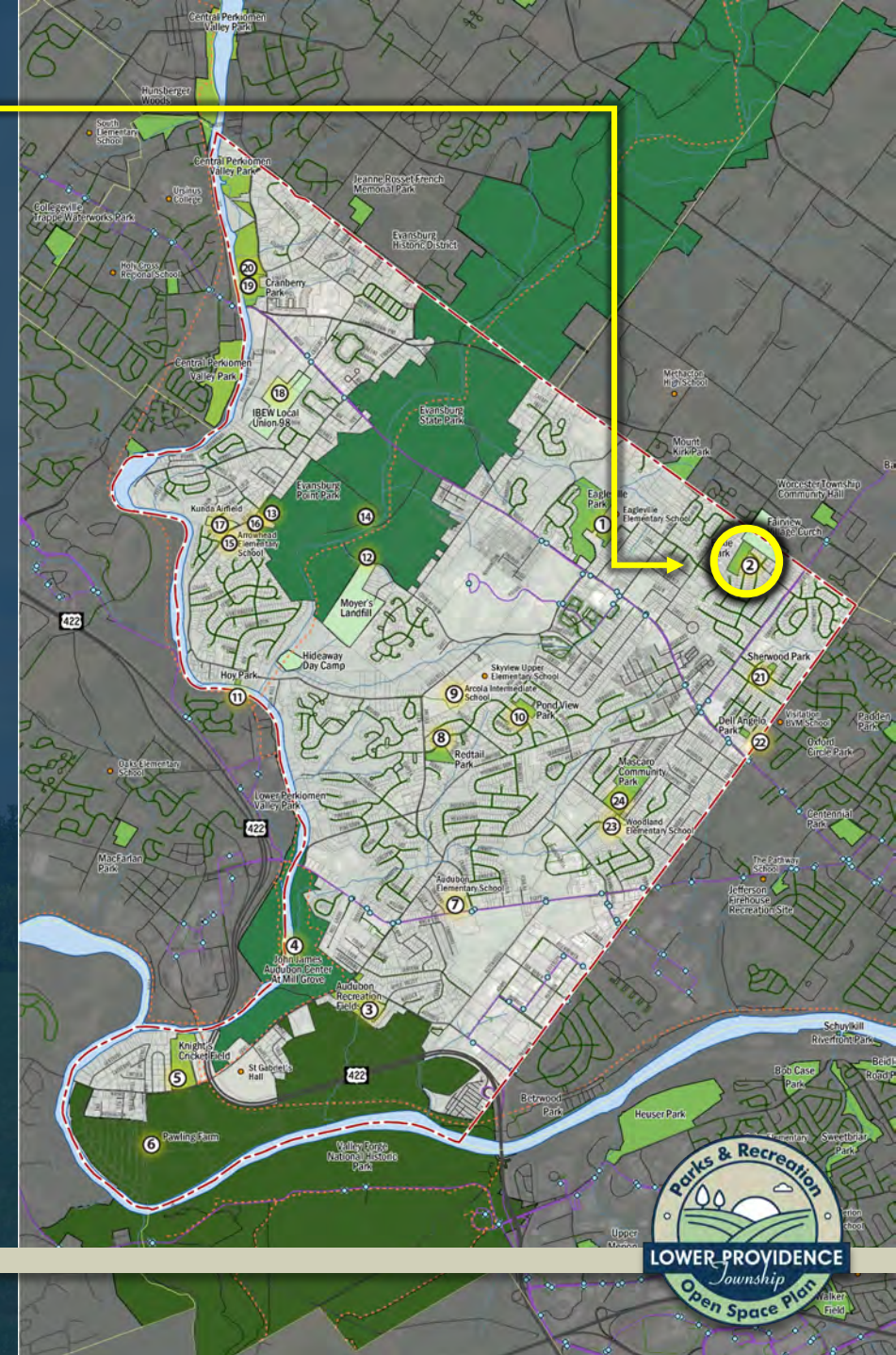
Eagleville Park

- **Municipal**
- 1 Baseball field
- 1 Football Field
- 1 Basketball Court
- 4 Tennis Courts
- 2 Bocce Courts
- 2 Shuffleboard Courts
- Playground
- Pavilion
- Amphitheater
- Nature Trails



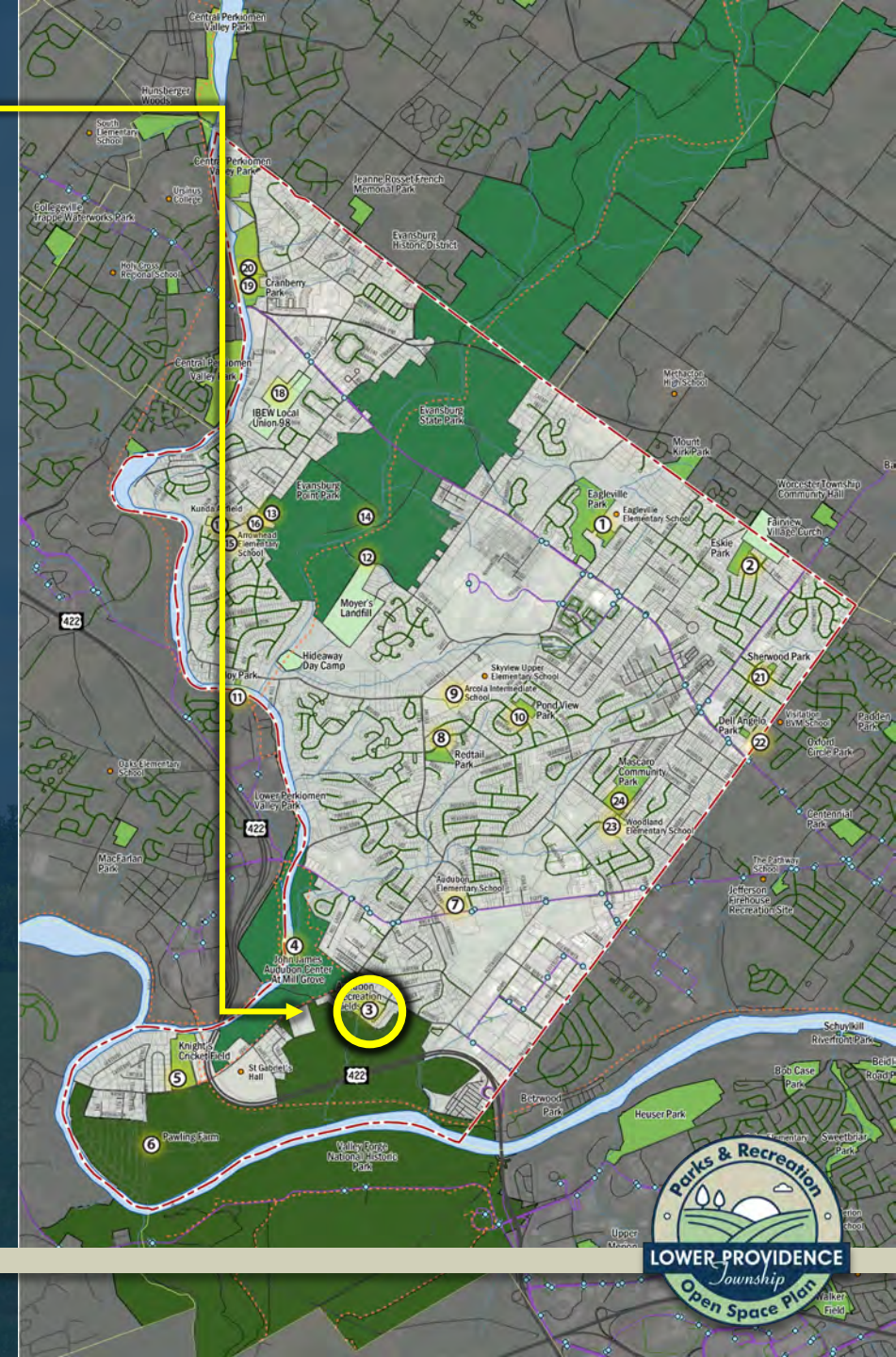
Eskie Park

- **Municipal**
- 2 Baseball fields
- 1 Basketball Court
- Playground
- Pavilion
- Walking Trails



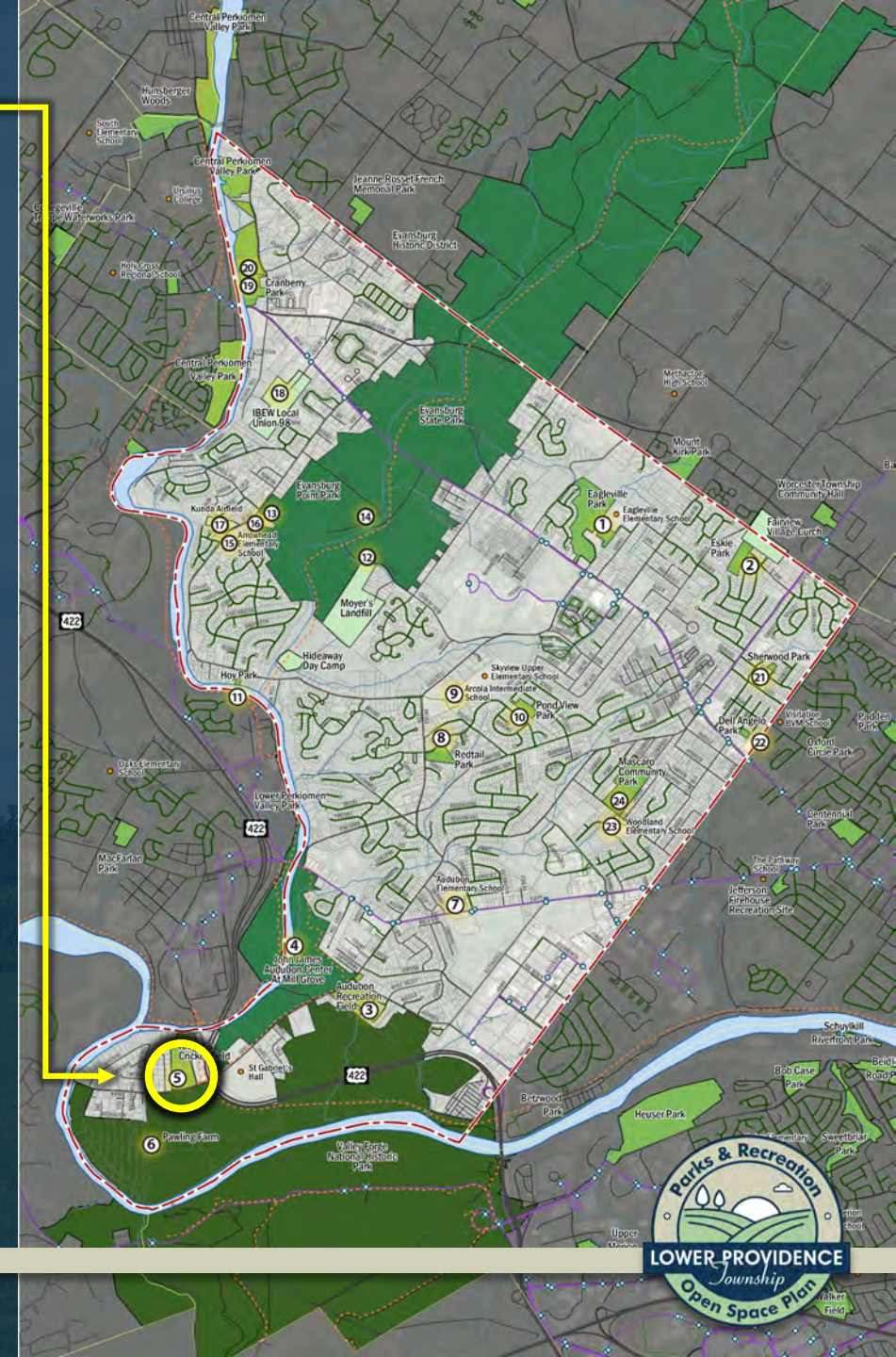
Audubon Recreation Fields

- County
- 7 Baseball fields
- Playground
- Pavilion
- Walking Paths



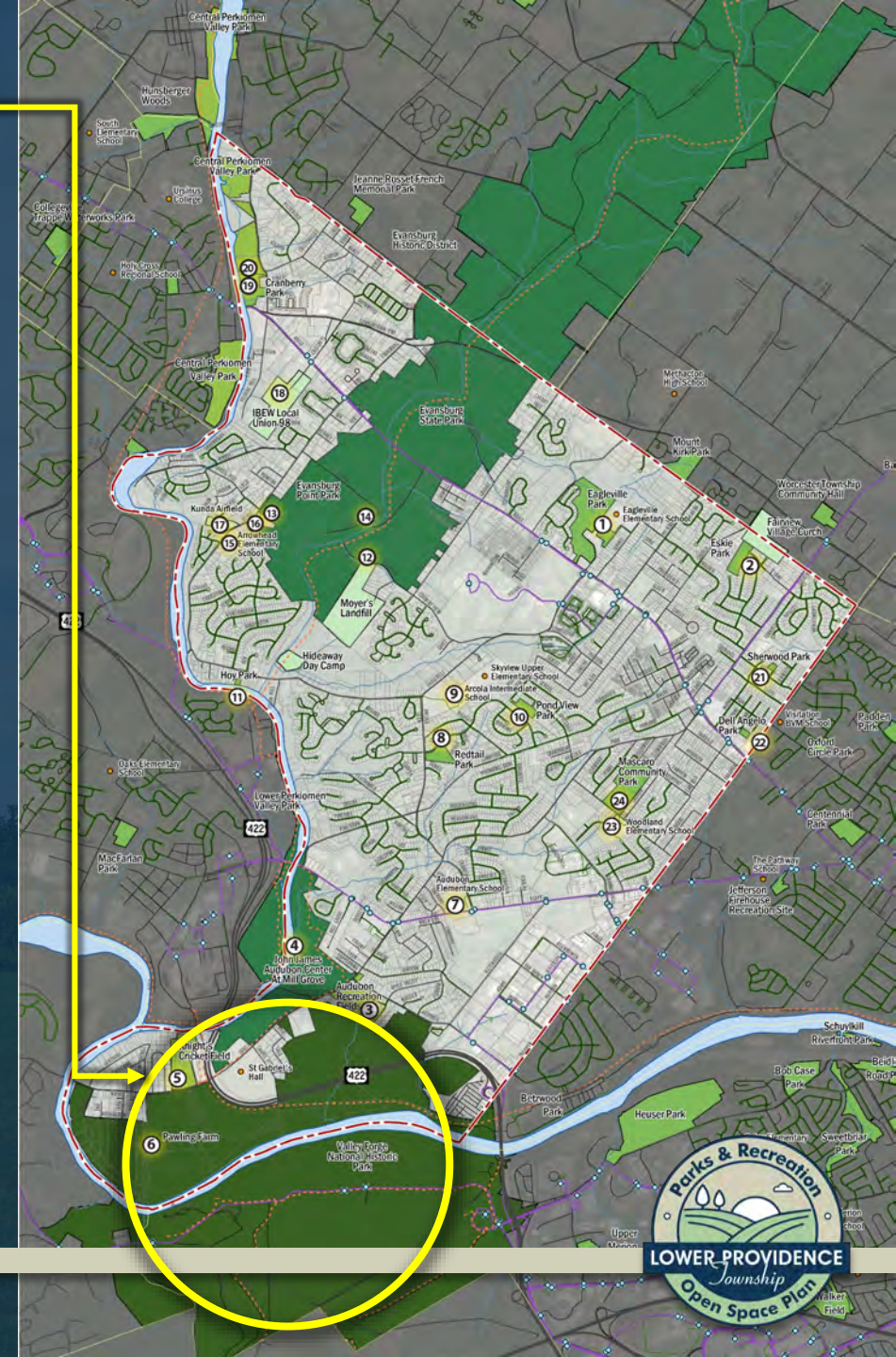
Gabriel's / Knight's Cricket Field

- County
- Multi-Use Fields



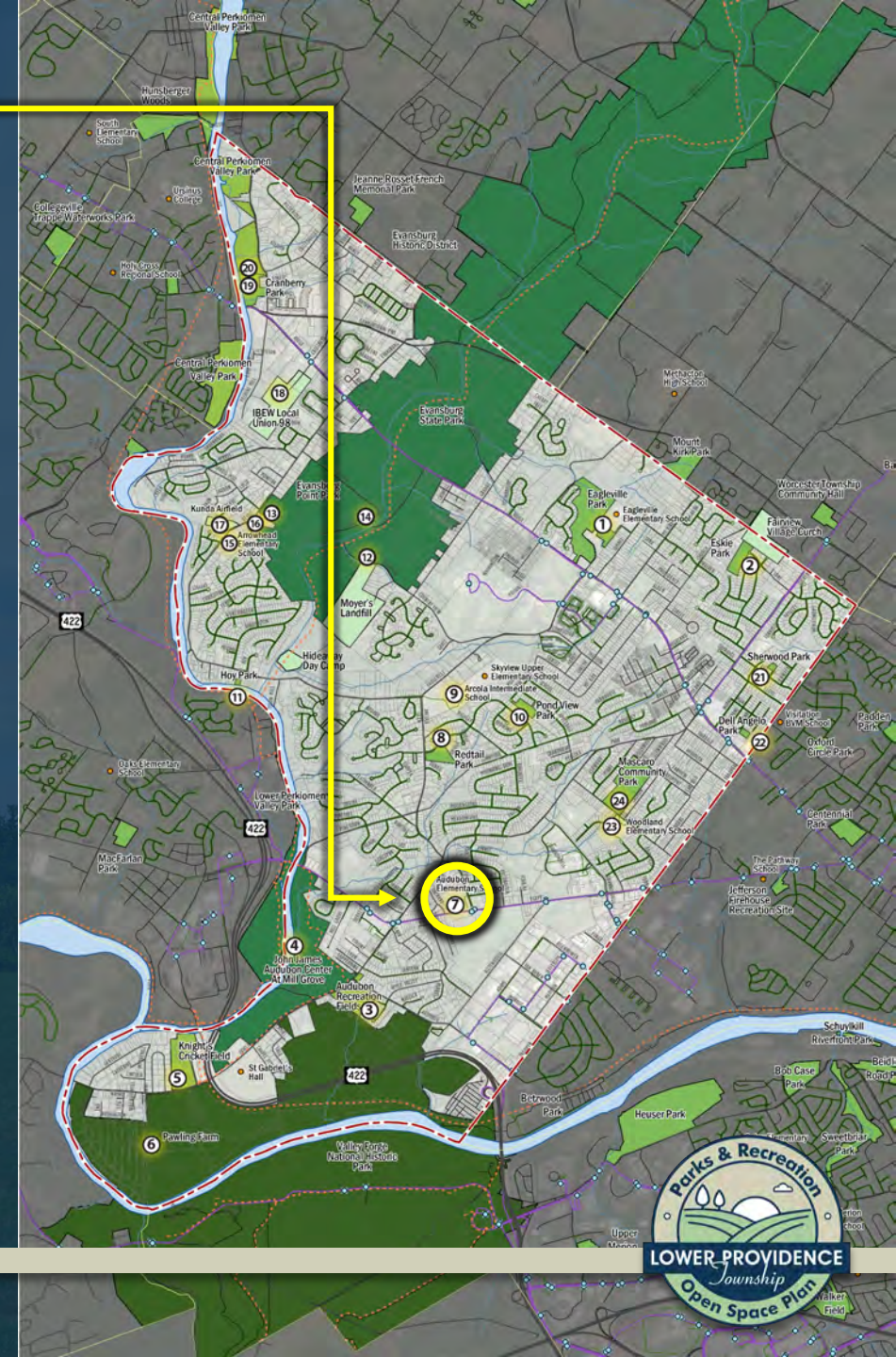
Valley Forge National Park

- **Federal**
- Gravel Trails
- Paved Trails
- Unpaved Trails
- Biking Trails
- Equine Trails



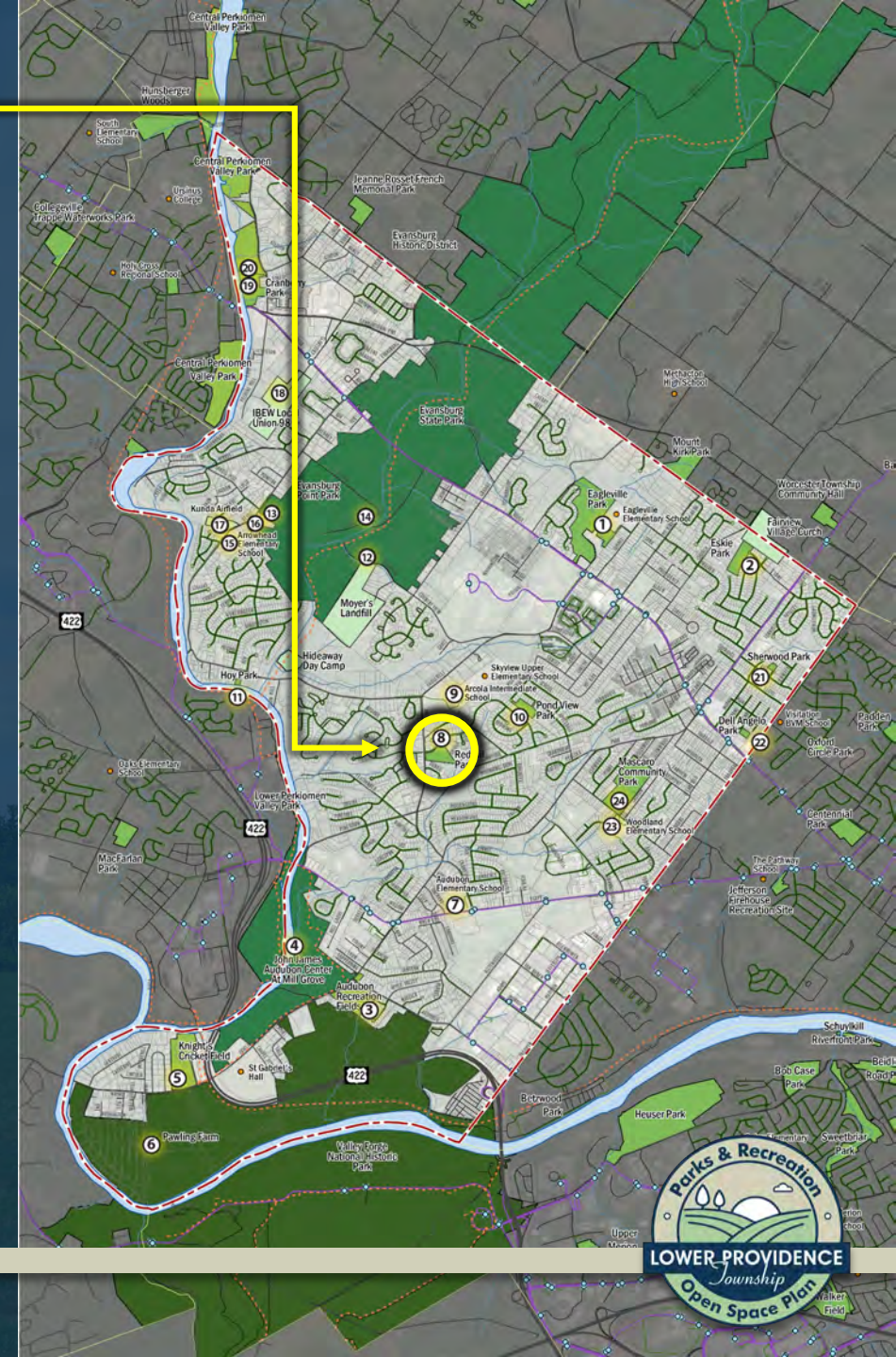
Audubon Elementary School

- CLOSED
- Methacton School District
- Multi-Use Field
- Playground
- Pavilion
- Basketball Area



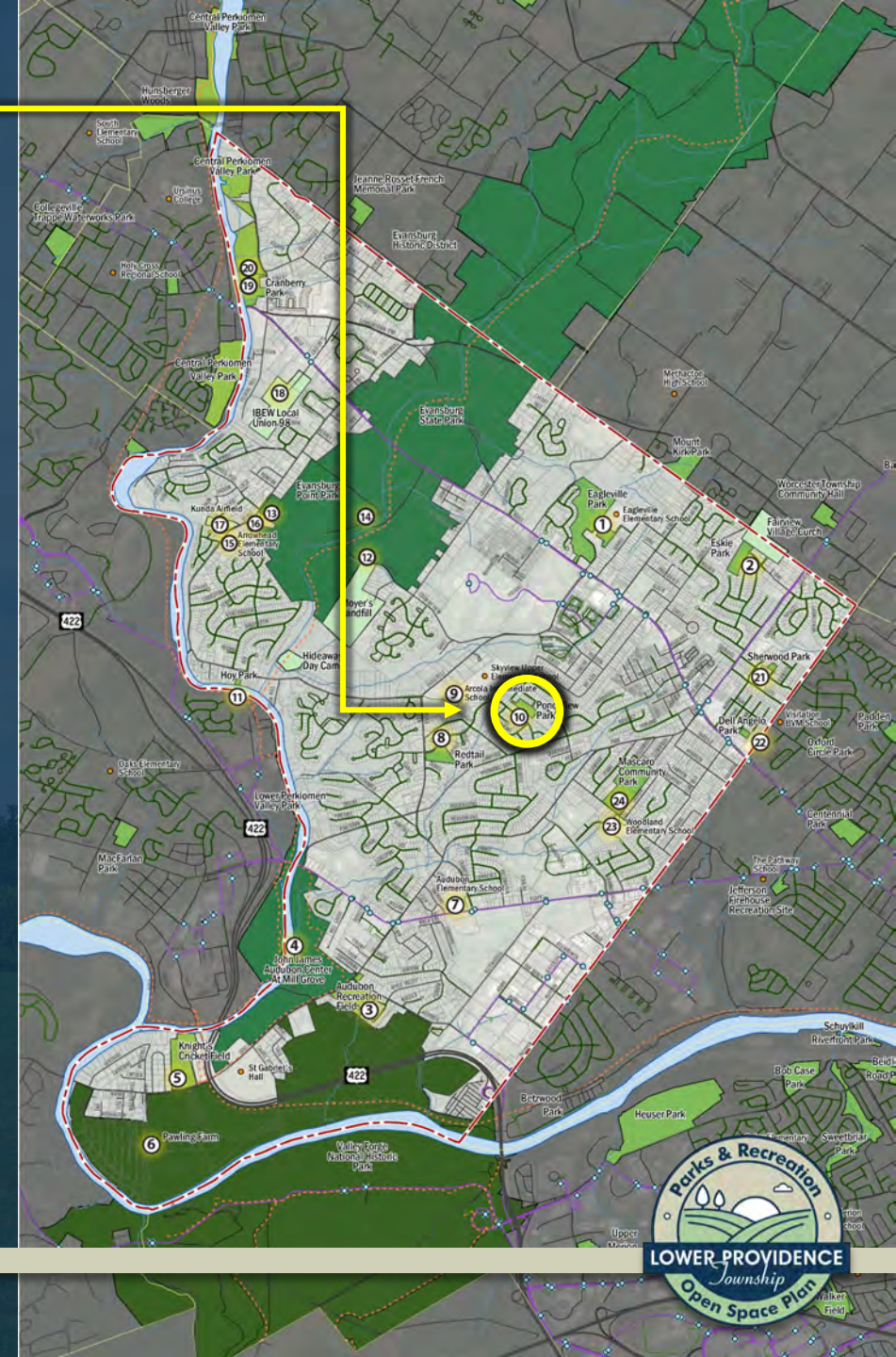
Redtail Park

- **Municipal**
- 1 Baseball Field
- 1 Soccer Field



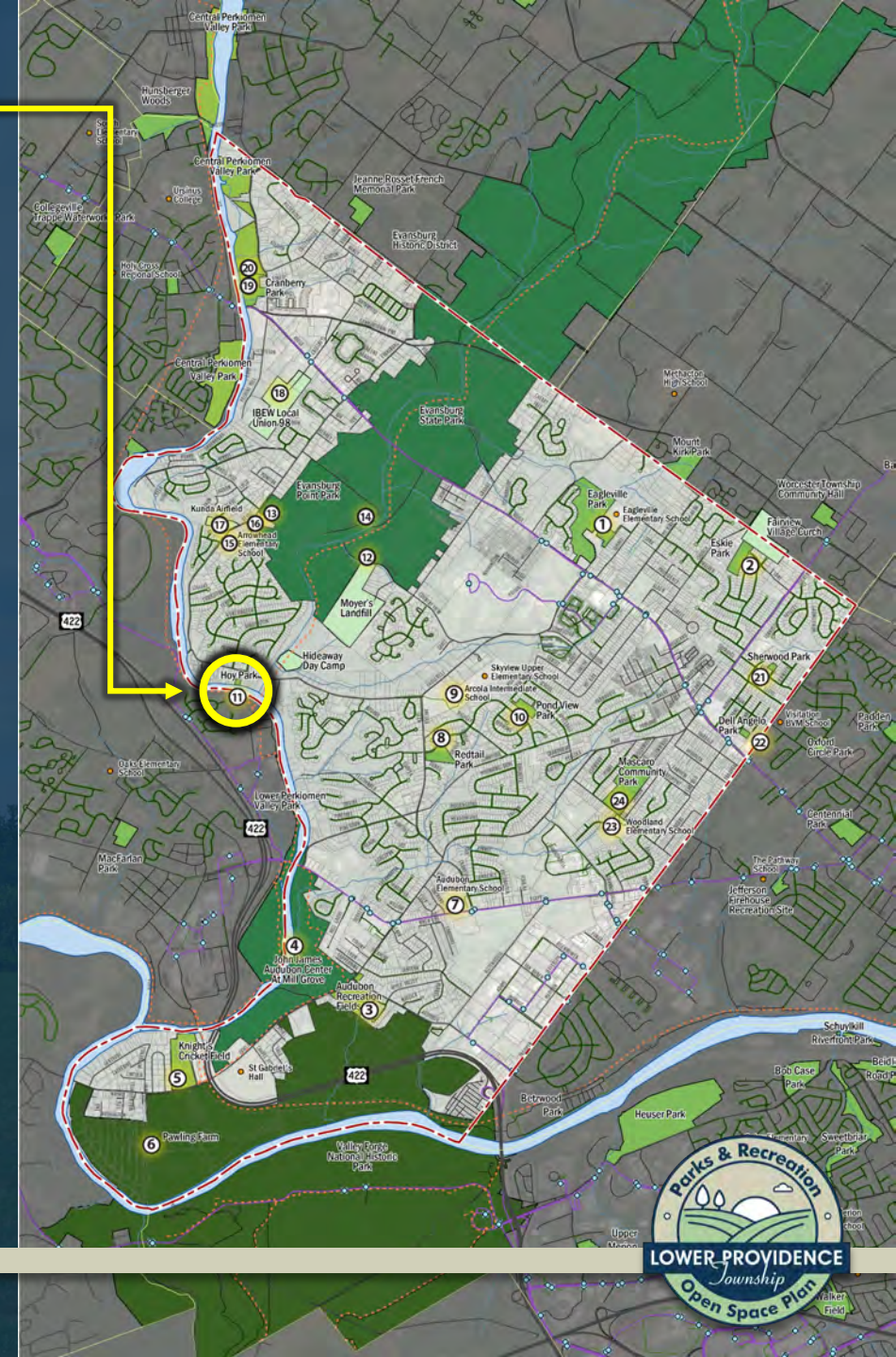
Pond View Park

- Municipal
- Open Space



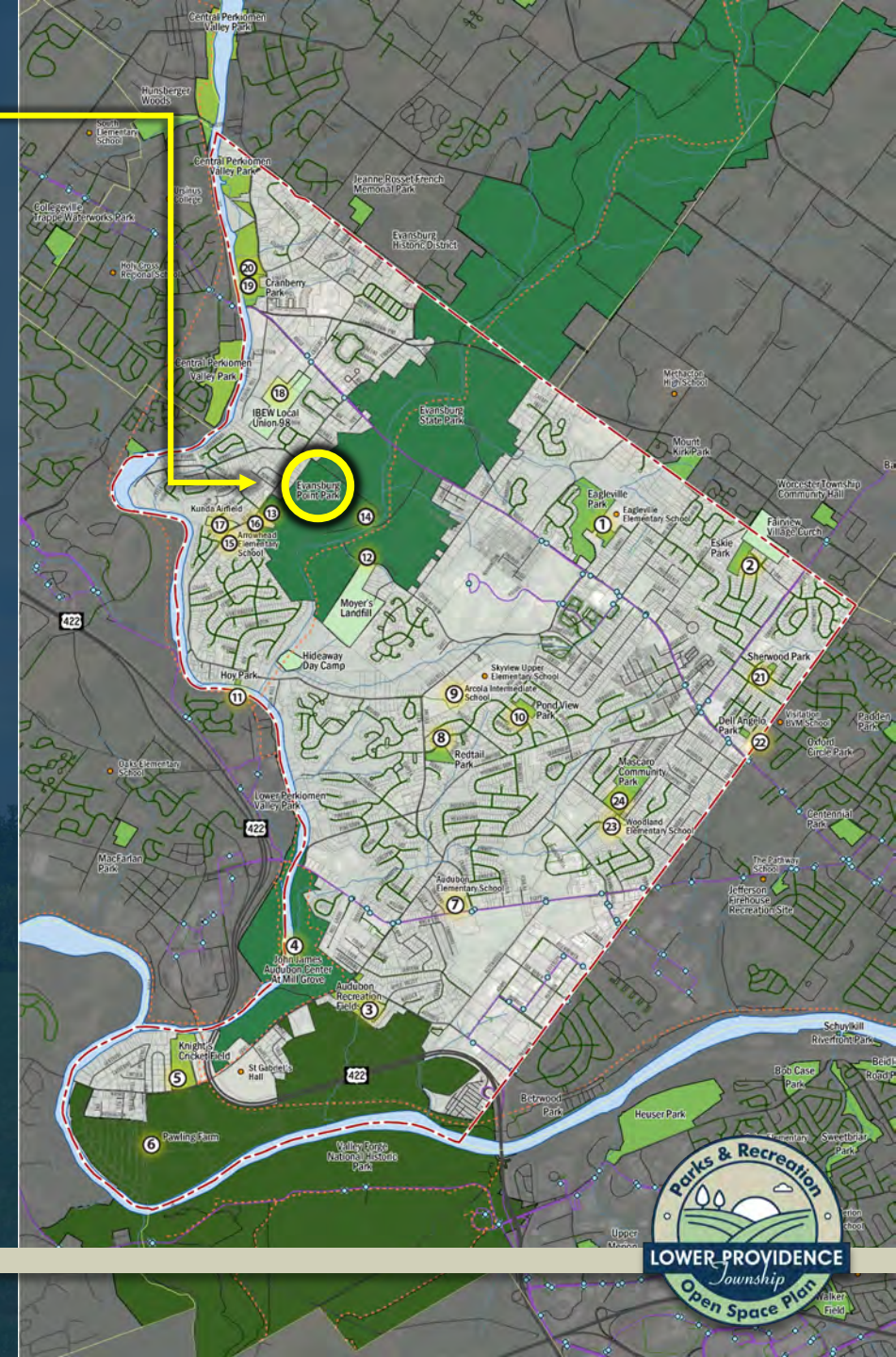
Hoy Park

- **Municipal**
- Water Access via ADA Pier
- Paved Trail
- Boating Access



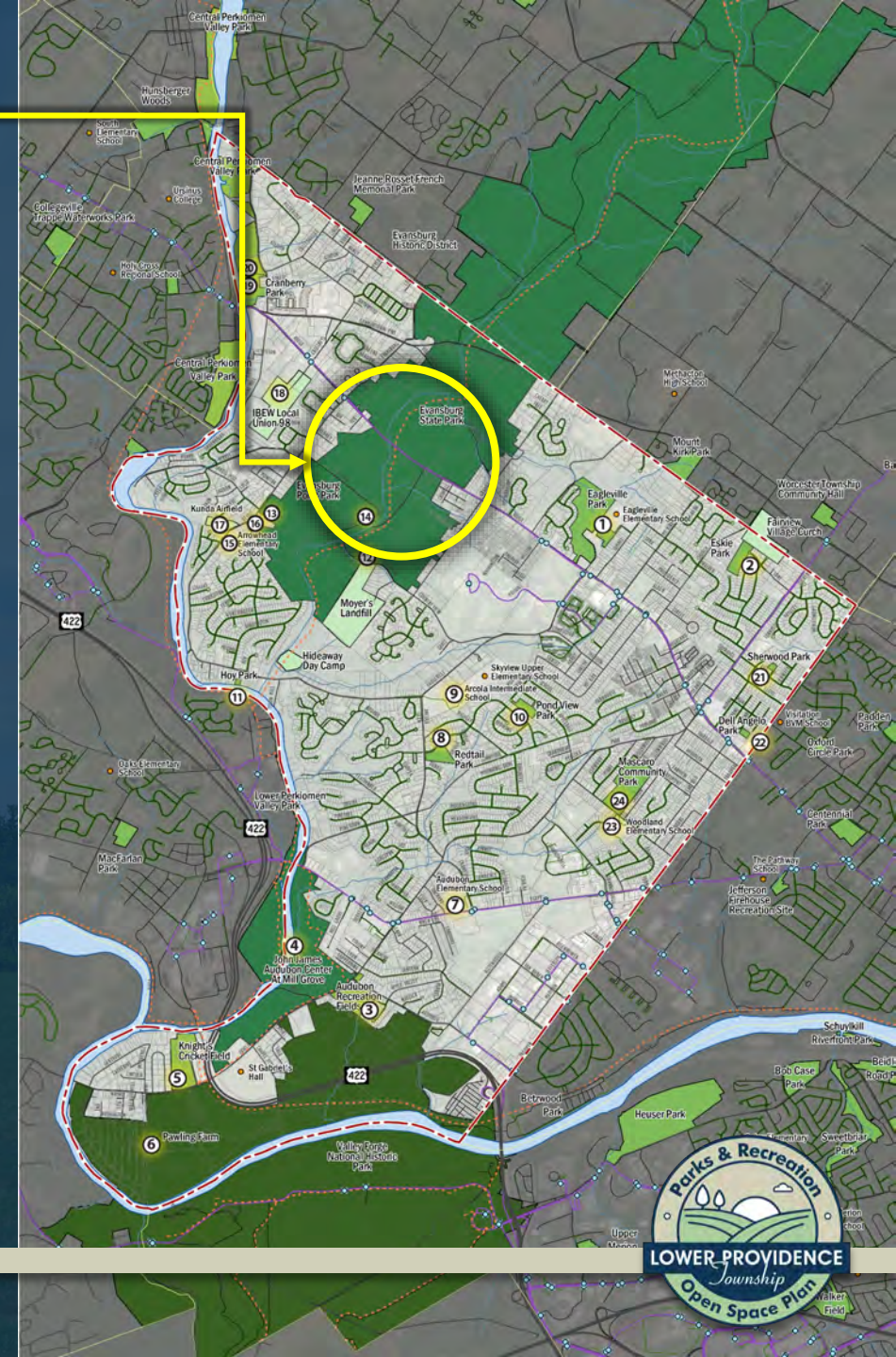
Evansburg Point Park

- Municipal
- Restrooms
- Playground
- 2 Multi-Use Fields
- Nature Area



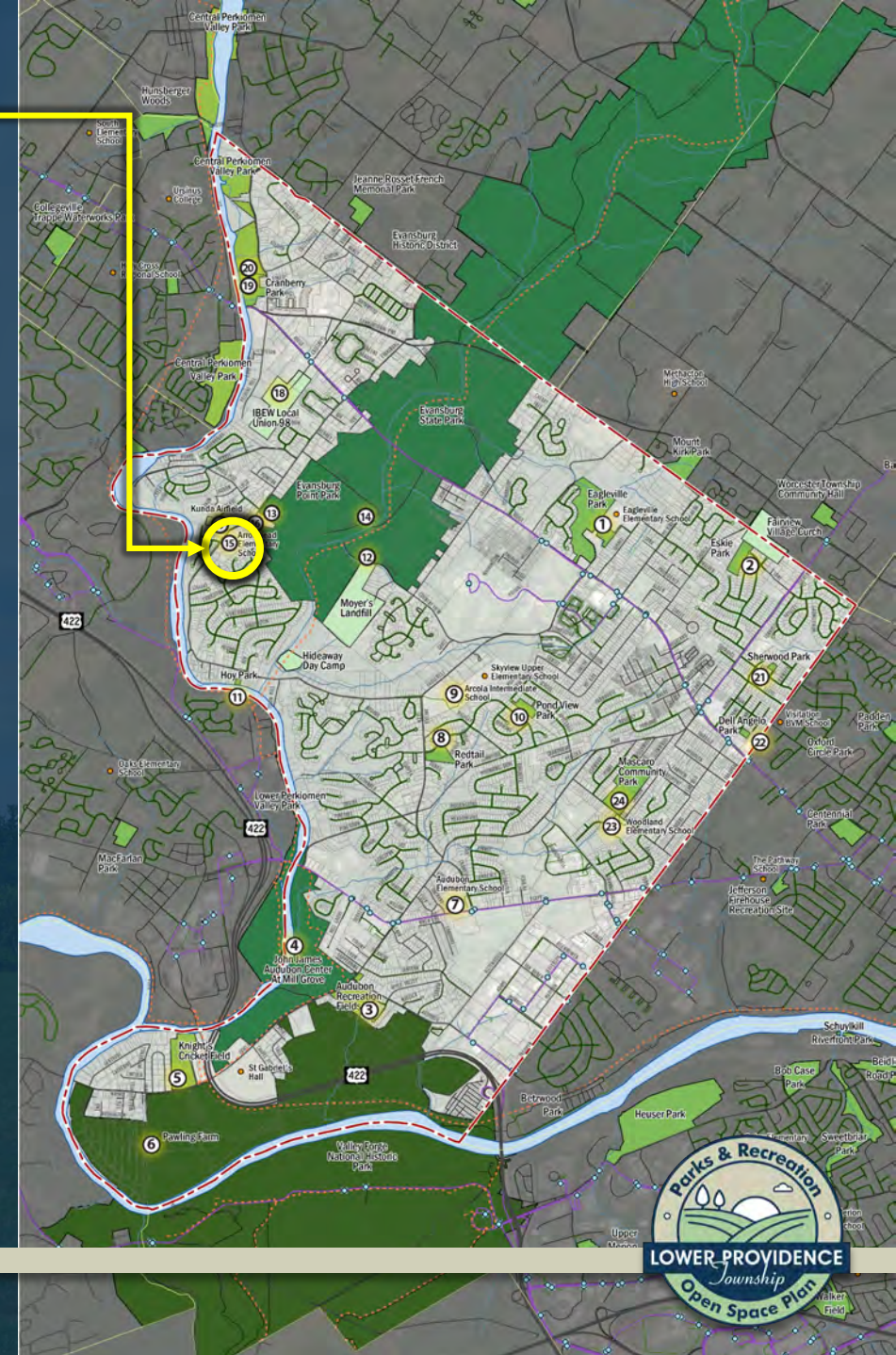
Evansburg State Park

- State
- Fishing Pier
- Picnic Area
- Walking Trails
- Biking Trails
- Equine Trails



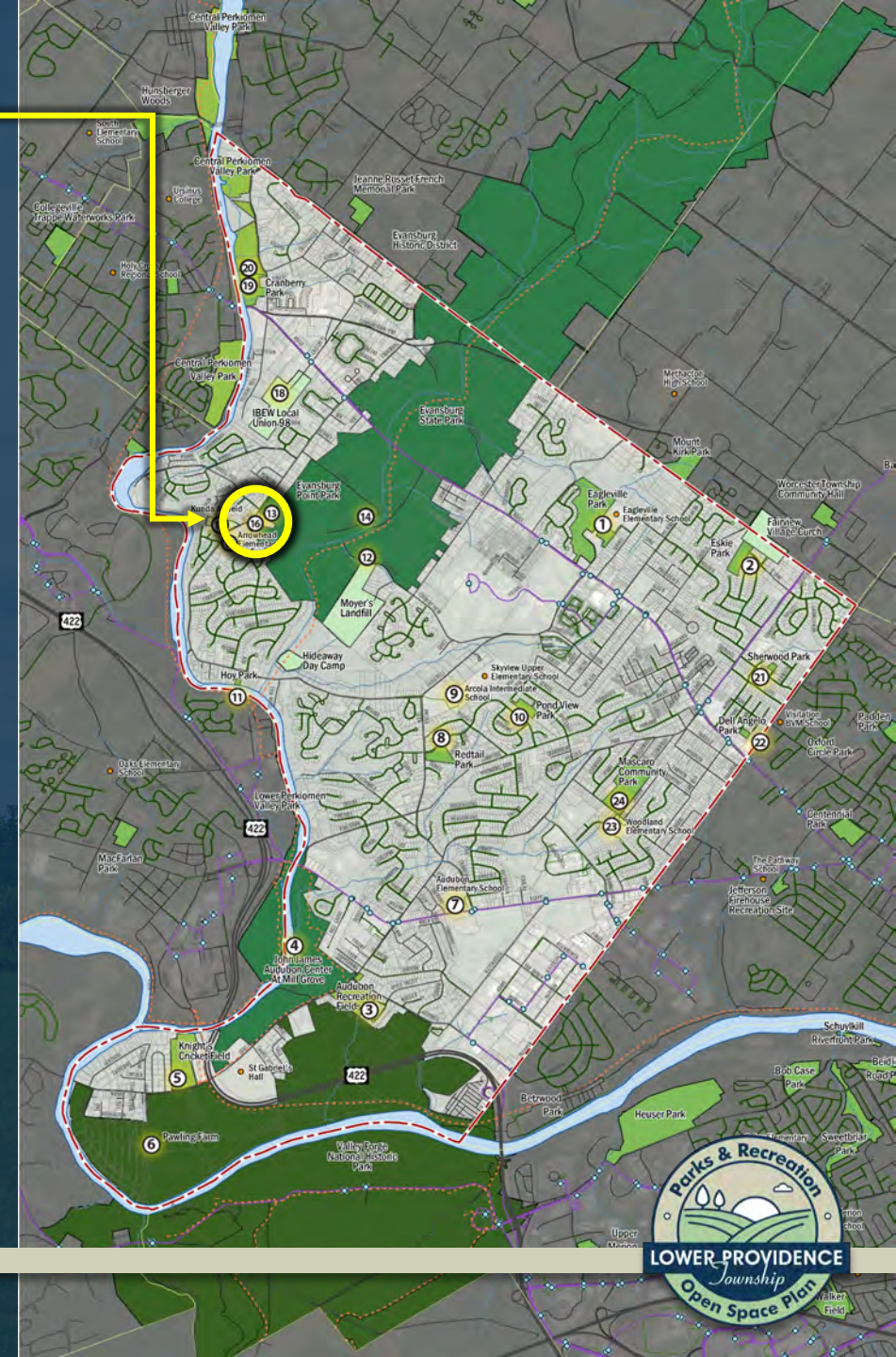
Arrowhead Elementary School

- Methacton School District
- Playground
- 1 Basketball Court



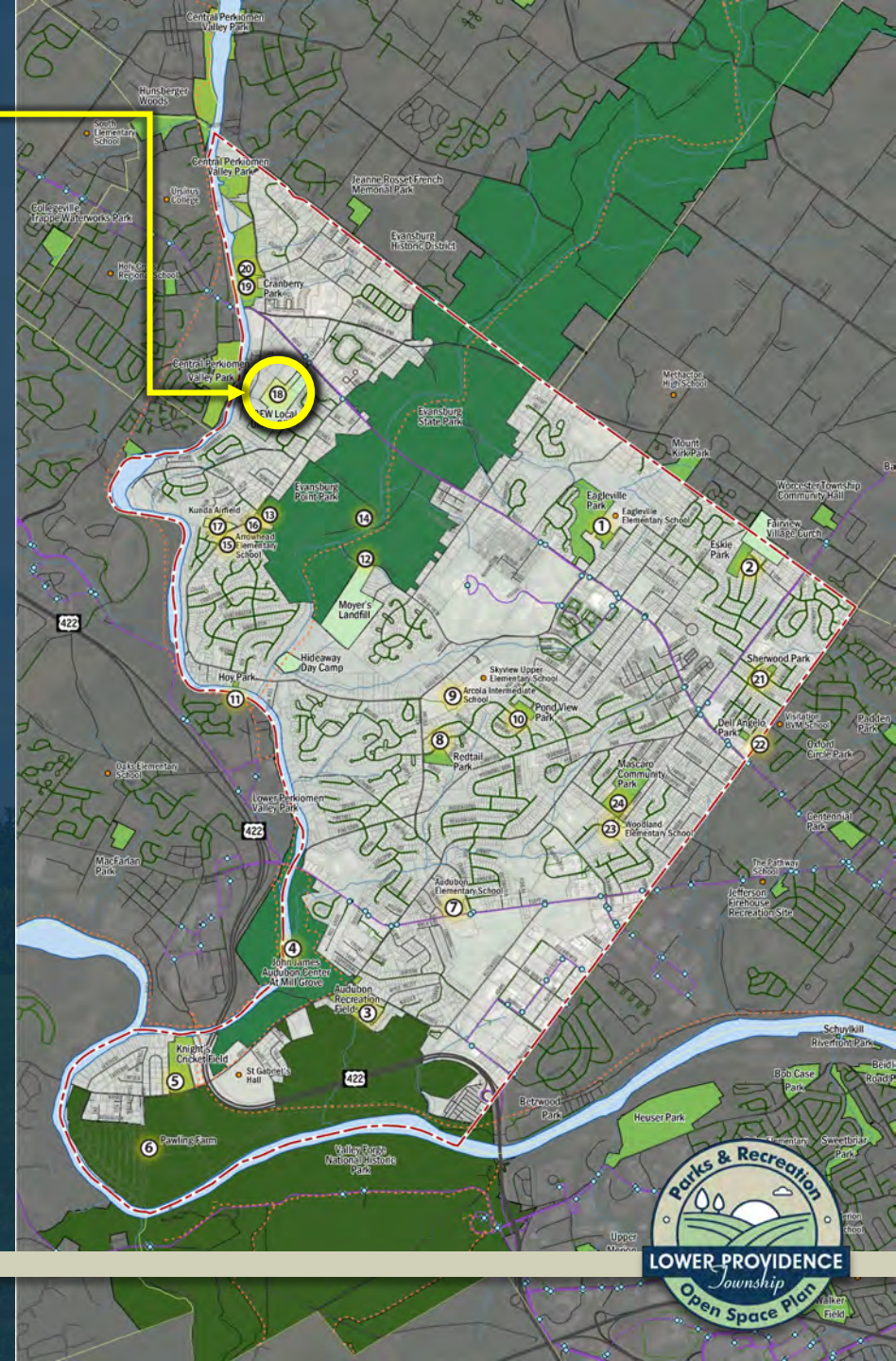
Level Road School House

- Municipal
- Restrooms
- Multi-Purpose Meeting Room



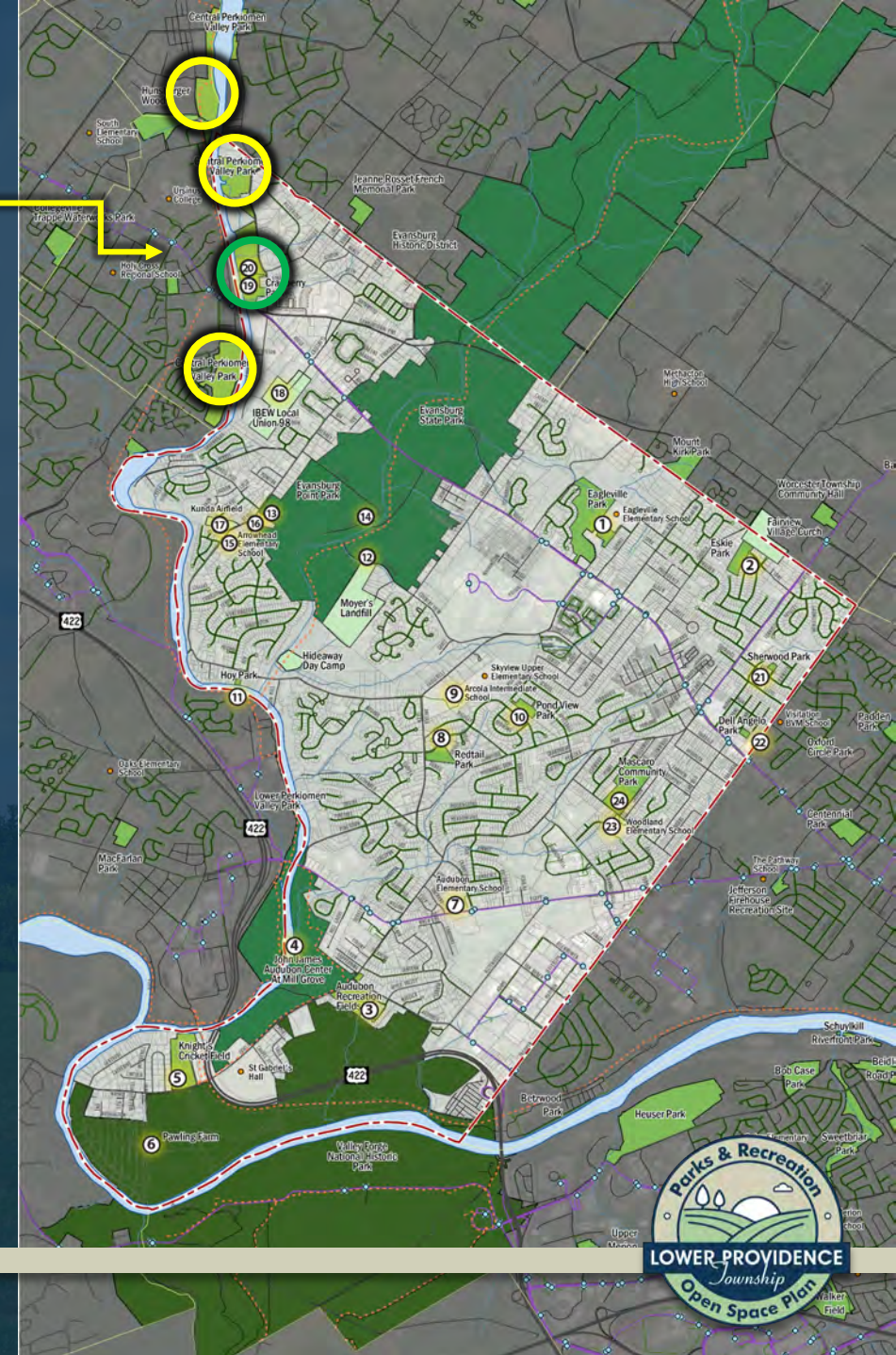
IBEW Recreation Fields

- Private
- Pavilion
- Multi-Use Field
- 1 Baseball Field



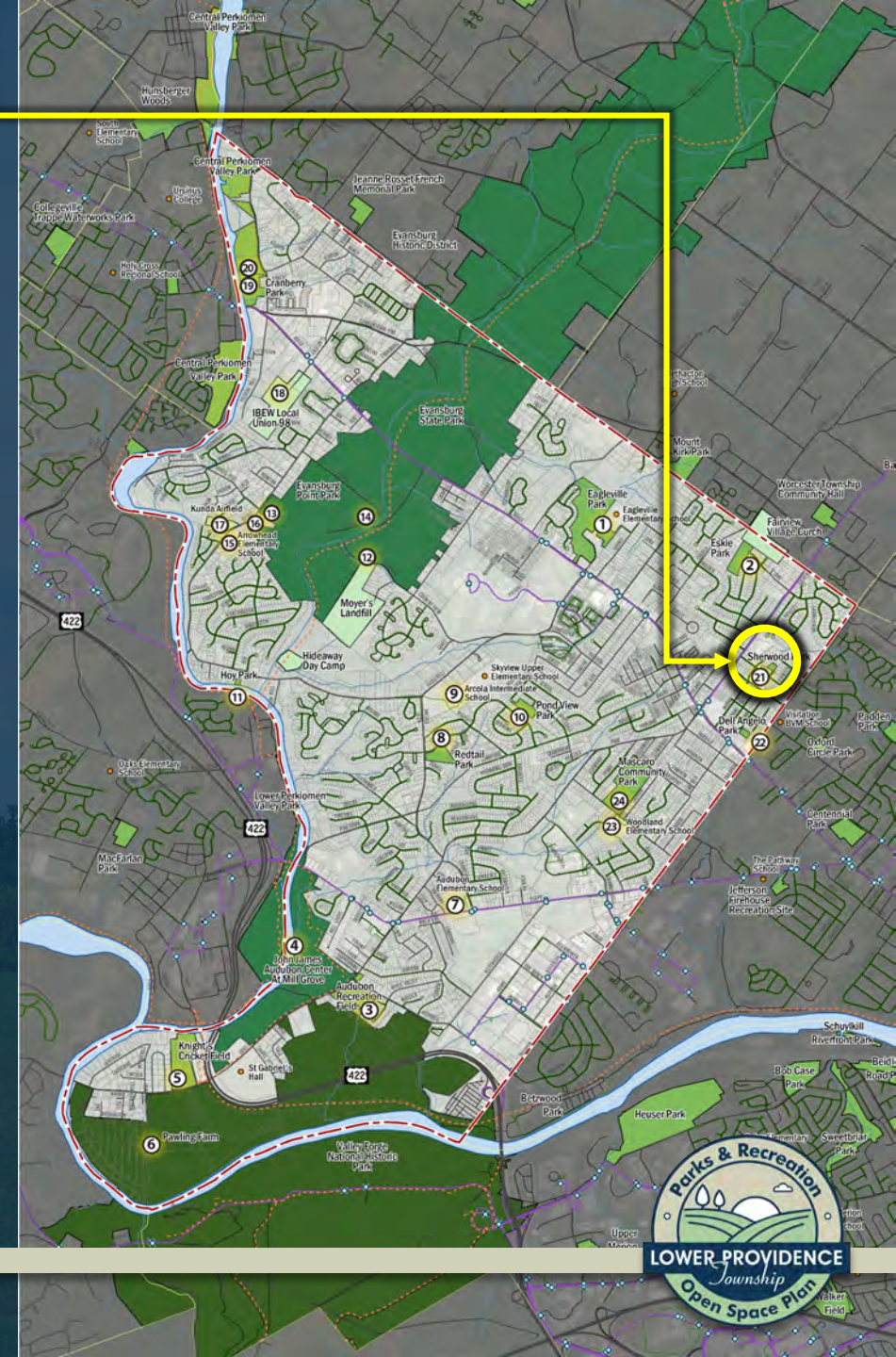
Cranberry Park & Central Perkiomen Valley Park

- Cranberry Park – Municipal
- Central Perkiomen - County
- Open Space
- Minimal Infrastructure



Sherwood Park

- Municipal
- Playground



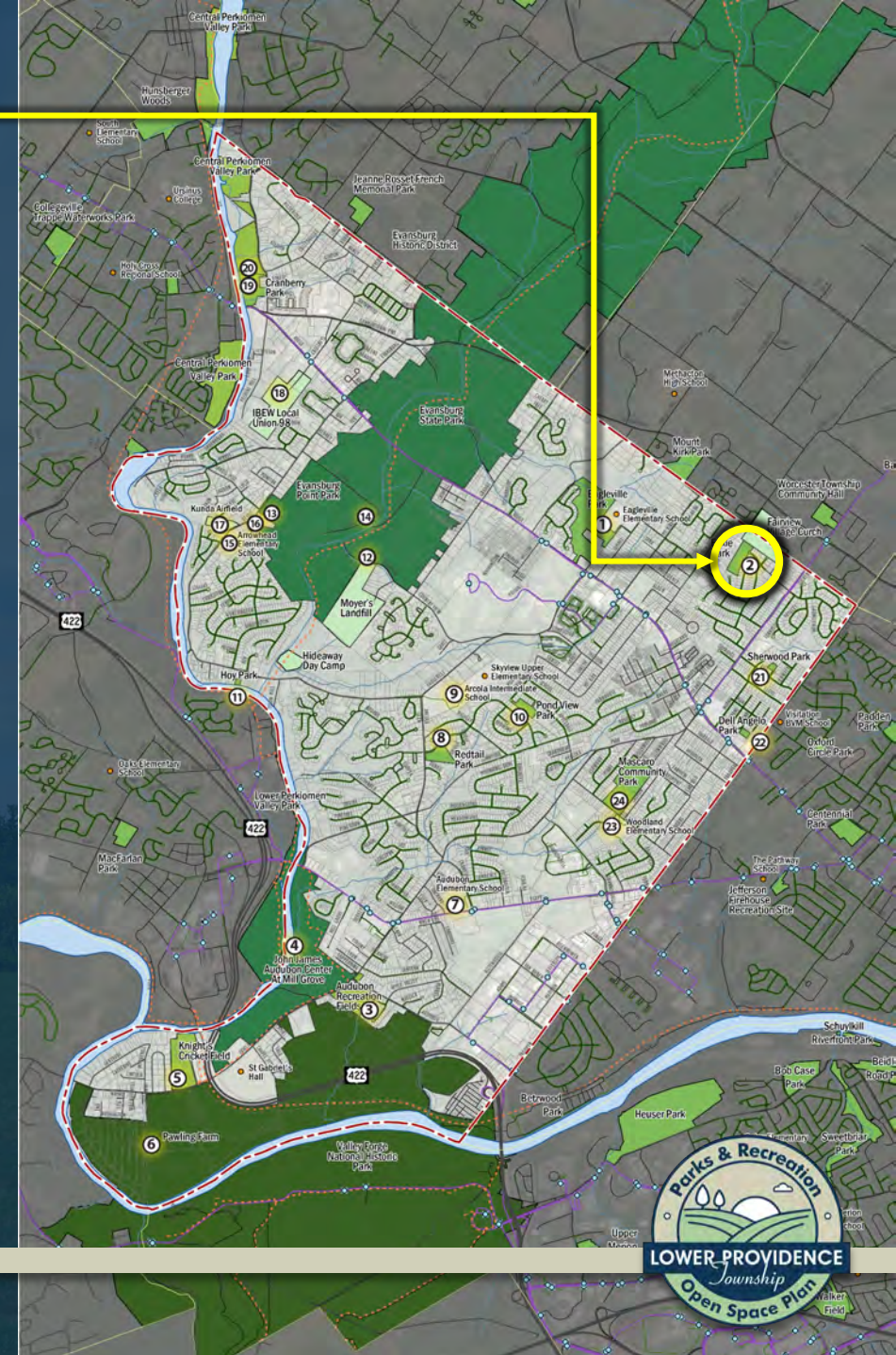
Dell Angelo Park

- Municipal
- Playground
- Picnic Area



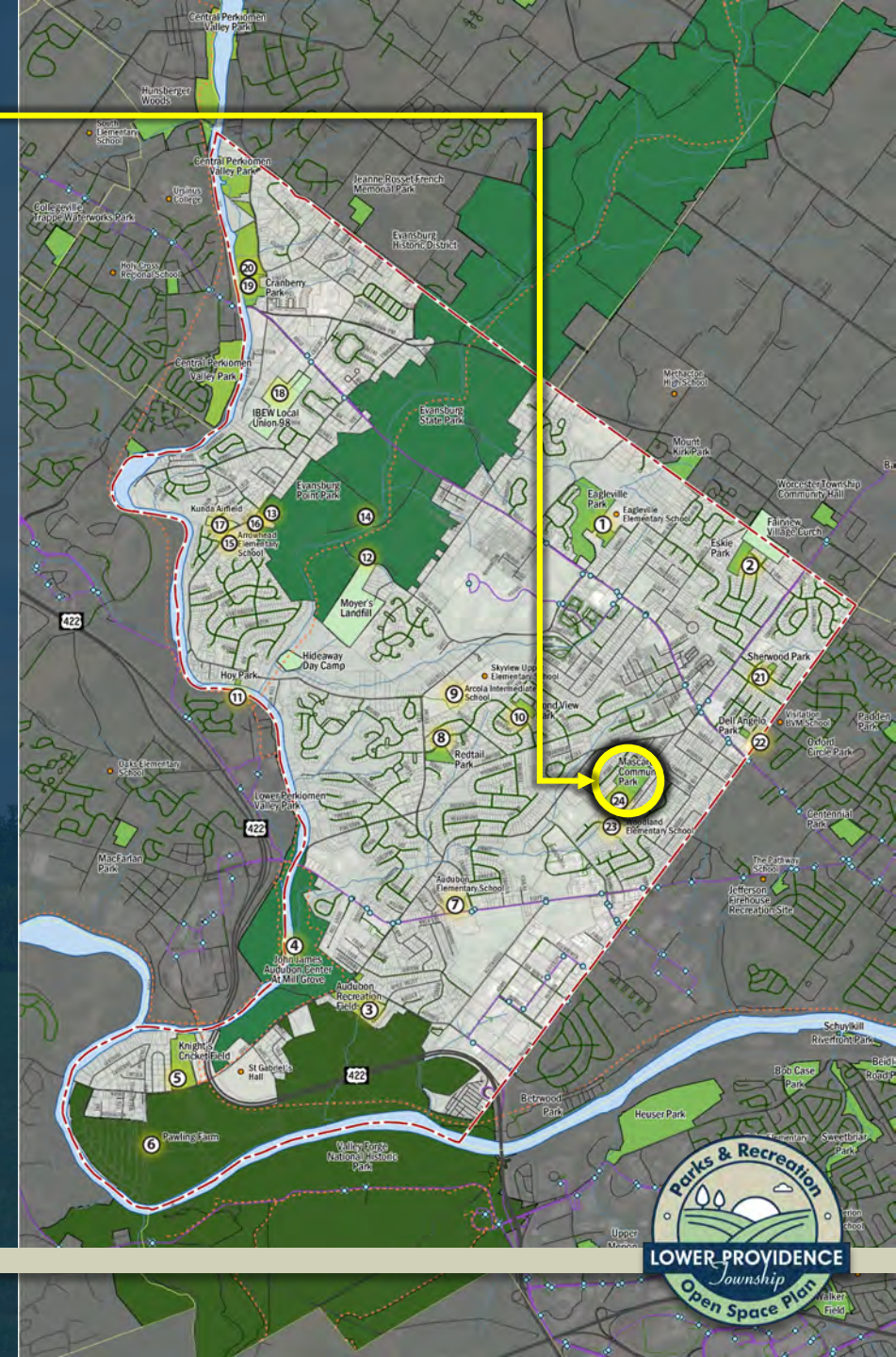
Woodland Elementary School

- Methacton School District
- Playground
- Basketball Court
- 2 Baseball Fields



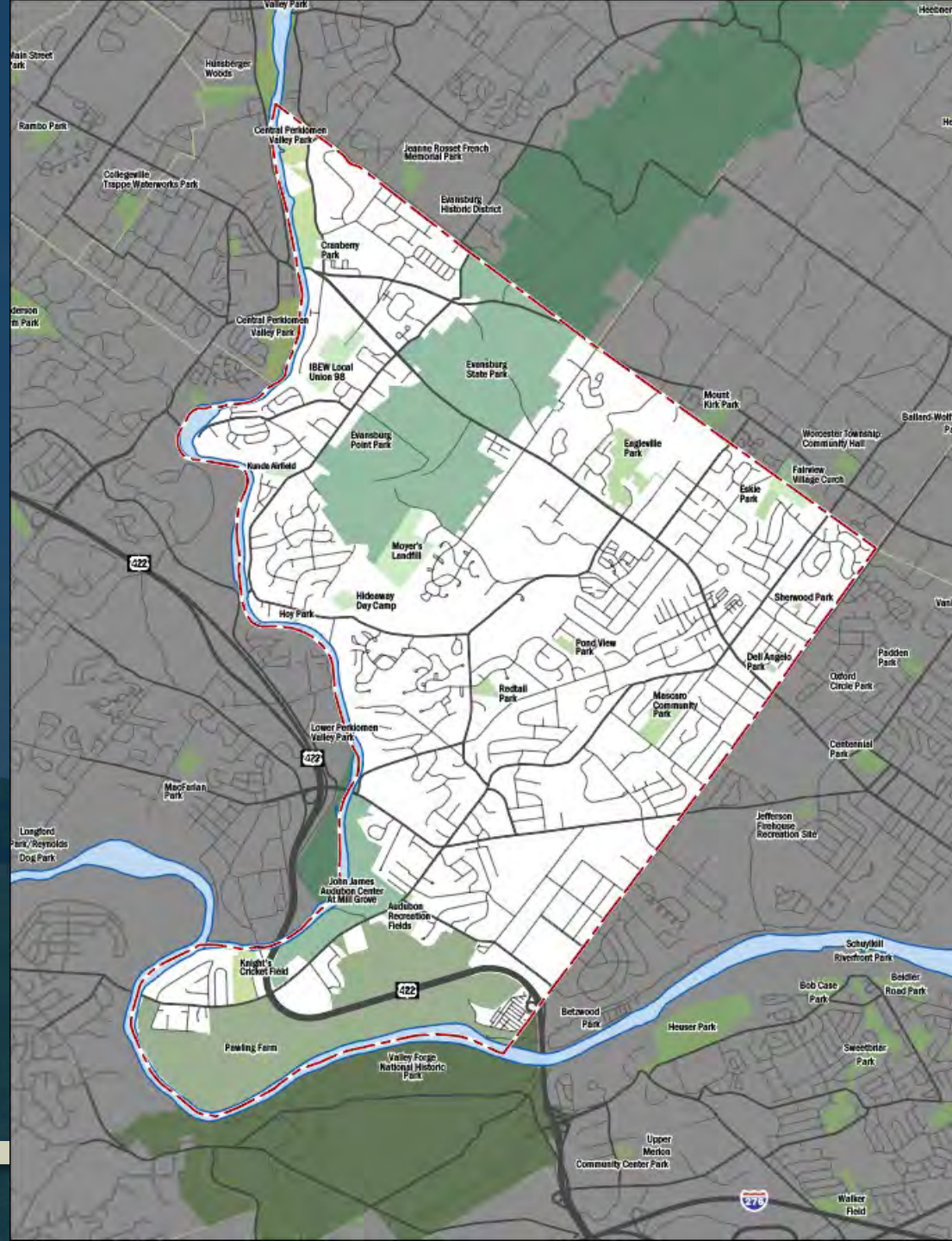
Mascaro Memorial Field & Community Park

- Municipal
- Playground
- Restrooms
- Pavilion
- Baseball Field
- Softball Field



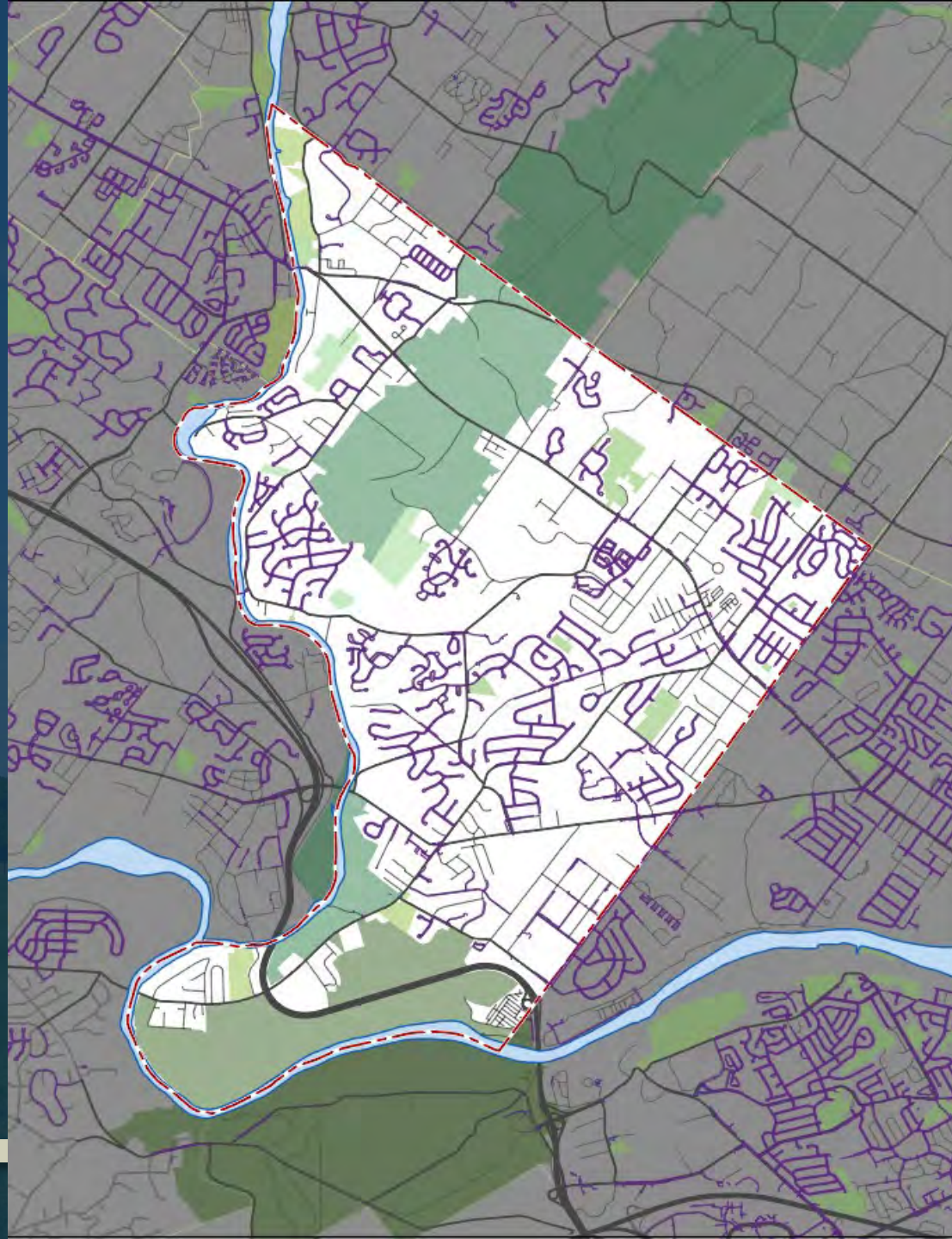
Existing Data

Project Area



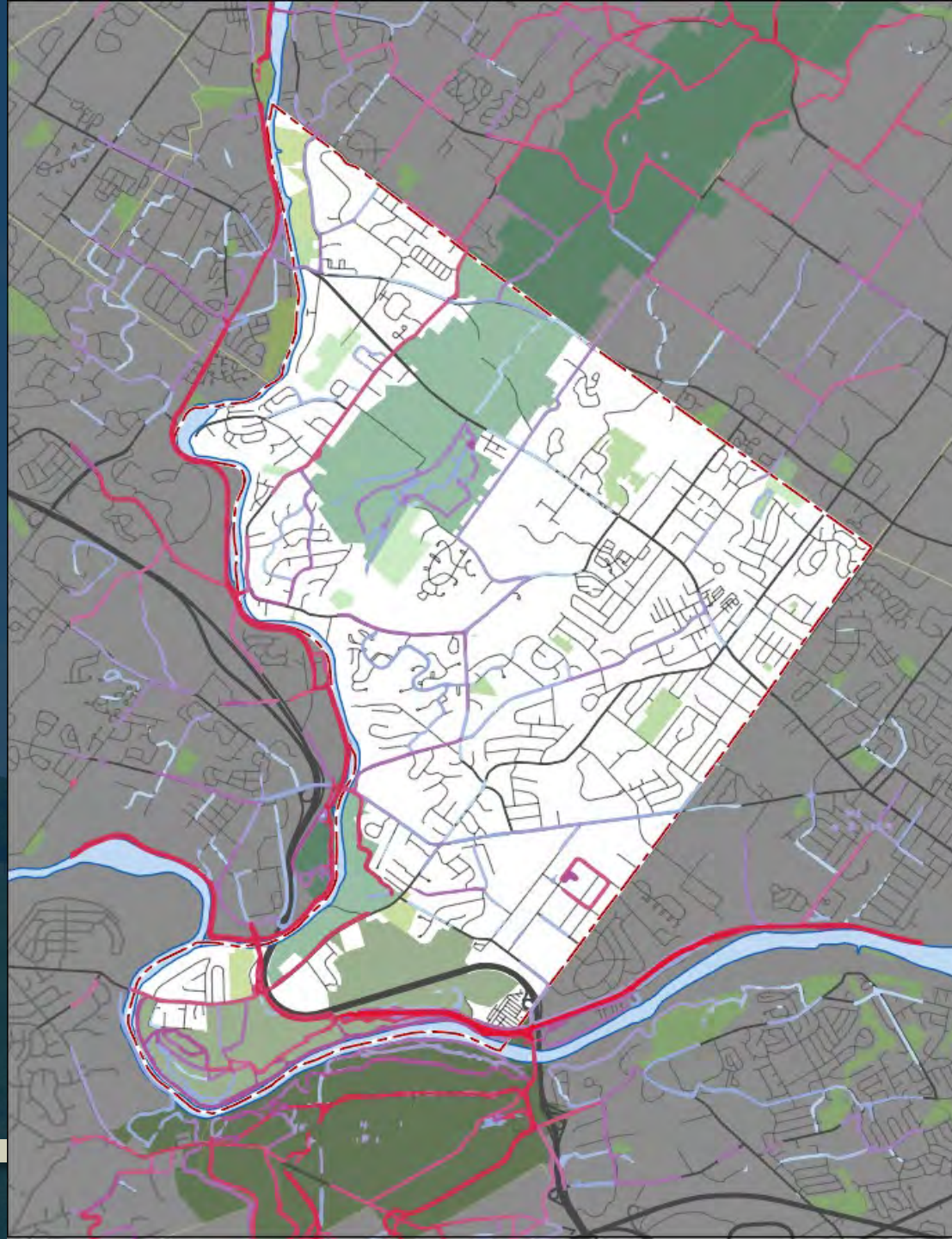
Existing Data

Sidewalk Inventory (DVRPC)



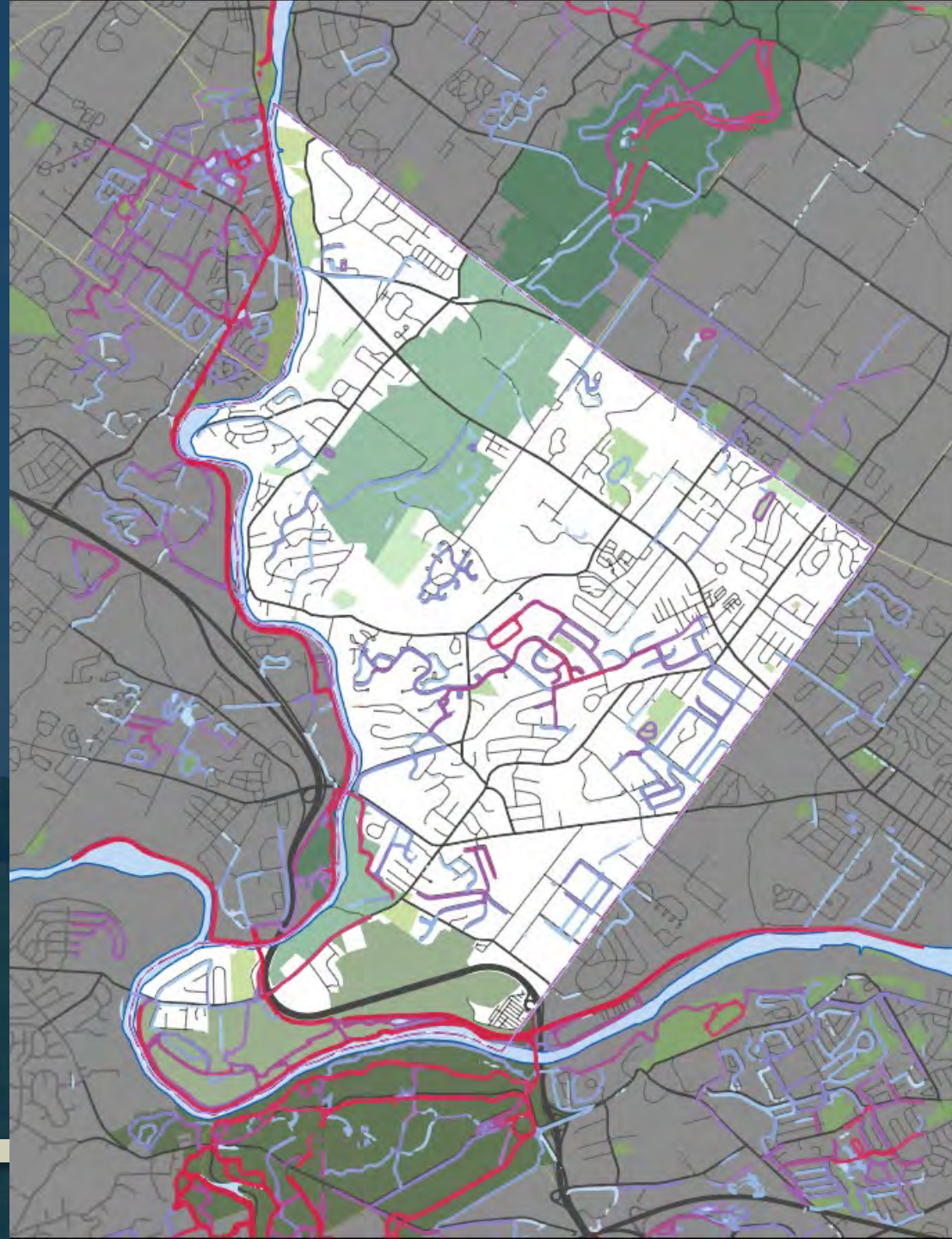
Existing Data

STRAVA Bicycle Data



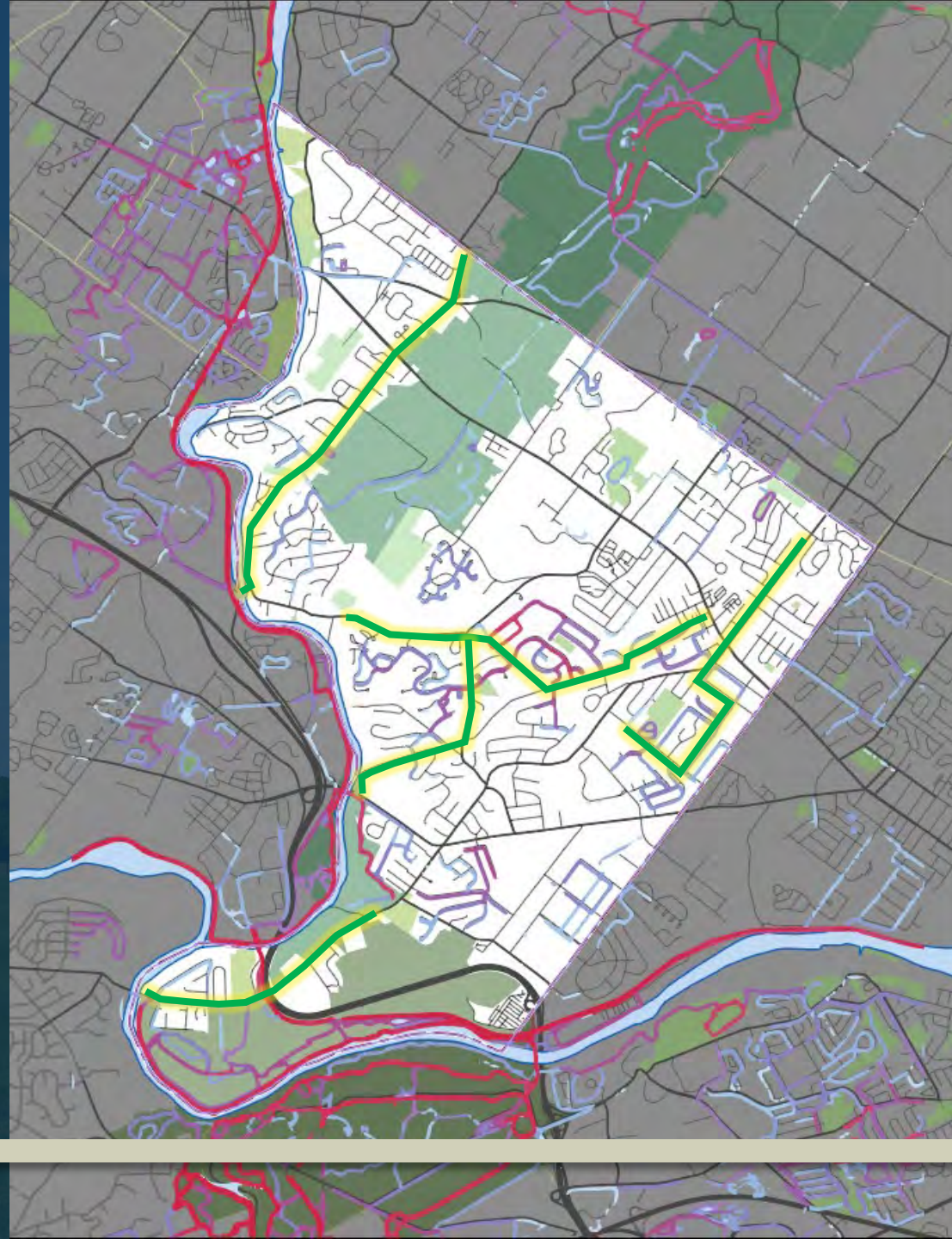
Existing Data

STRAVA Run Data



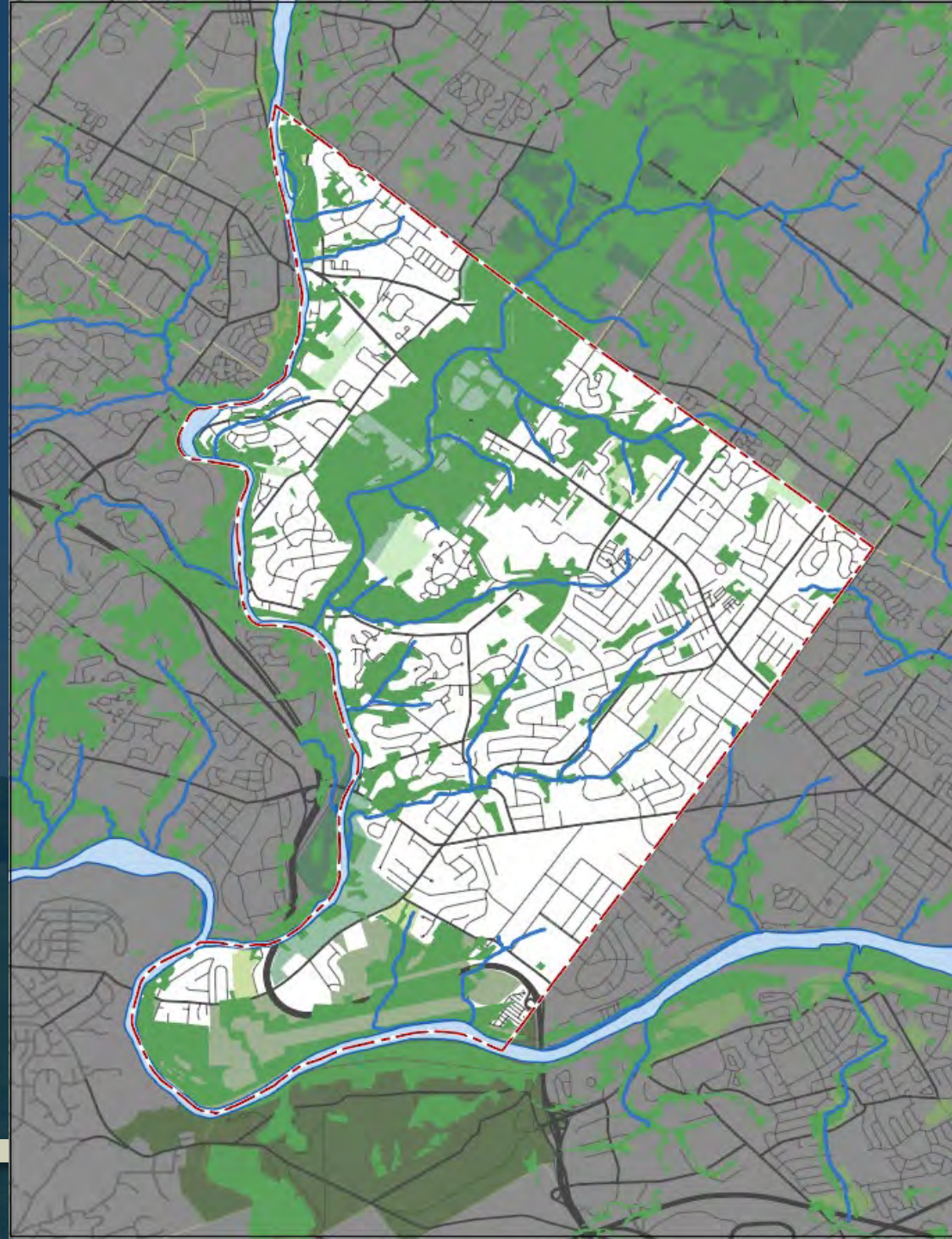
Existing Data

Possible Priority Corridors




Existing Data

Potential Greenways



Public Opinion Survey

- Please review survey questions and provide feedback
- Survey goes live prior to **Public Meeting #1 - Monday, September 28, 2020**




Lower Providence Township, Parks and Recreation Open Space Plan

1. What is the name of the municipality you live in?

☐ Lower Providence Township
☐ Upper Providence Township
☐ Trappe Borough
☐ Collegeville Borough
☐ Perkiomen Township
☐ Skippack Township
☐ Worcester Township
☐ West Norriton Township
☐ East Norriton Township
☐ Upper Merion Township
☐ Other (please specify)

2. How long have you lived in your current community?

☐ 0 to 5 years
☐ 6 to 10 years
☐ 11 to 20 years
☐ 21 or more years



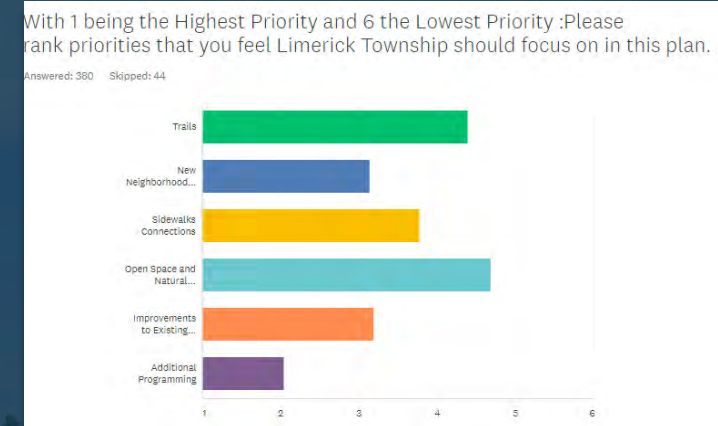
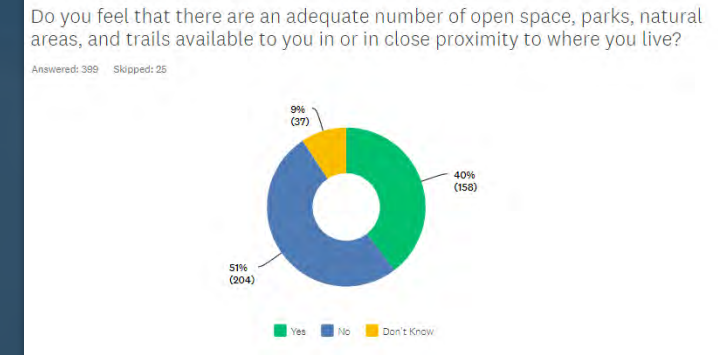
Lower Providence Township, Parks and Recreation Open Space Plan

5. In the past 12 months, has any member of your household participated in any activities in parks, natural areas, or open spaces in or around Lower Providence Township? This would include any recreational activity, such as walking, biking, participating in team sports, swimming, bird watching, boating, etc.

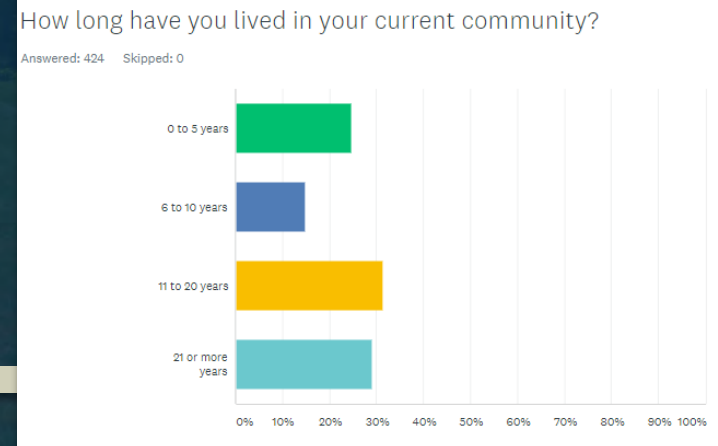
☐ Yes
☐ No
☐ Don't Know

6. Which parks, natural areas, trails, or facilities do you visit for recreation purposes? (Please check all that apply)

☐ Audubon Recreation Association Fields (ARA)
☐ Cranberry Park
☐ Dell Angelo Park
☐ Eagleville Park
☐ Eskie Park
☐ Evansburg Point Park
☐ Gabriel's Field / Knight's Cricket Field
☐ Hoy Park
☐ Level Road School House
☐ Mascaro Memorial Field and Community Park
☐ Pond View Park
☐ Redtail Park



Typical Survey Result Formatting



WikiMapping

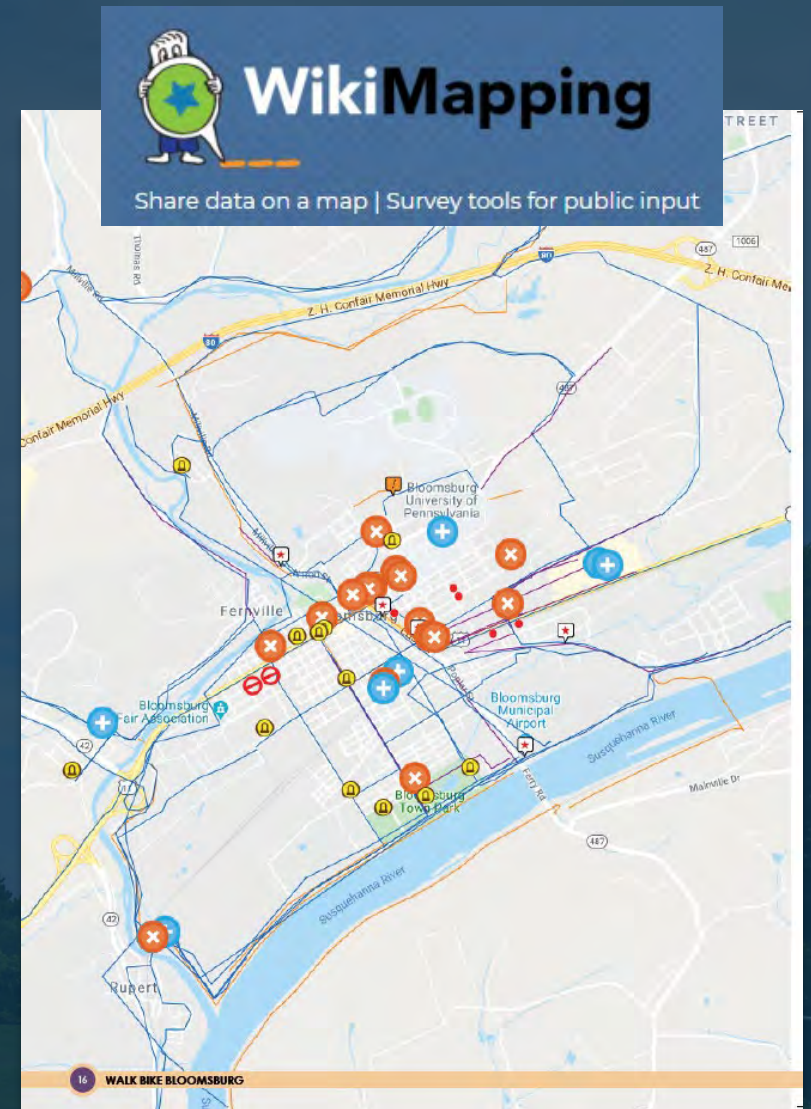
Wikimapping allows residents to virtually pin on a map:
existing conditions and desired open space and recreation improvements.



Lower Providence Township WikiMapping

WikiMapping Link:

wikimapping.com/Lower-Providence-Parks-and-Recreation.html



Result Formatting — Bloomburg PA
Walk / Bike Project



Brainstorming & Discussion

GOALS

Goals for the project — initially broad, then specific

Facts - What we know already about Lower Providence Open Space and Recreation

FACTS

CONCEPTS

Ideas for attaining project goals – Opportunities for improvement

Partners - Groups, Businesses, Institutions to create a partnership with

PARTNERS



Brainstorming & Discussion

<u>GOALS</u>	<u>FACTS</u>	<u>CONCEPTS</u>	<u>PARTNERS</u>
PROVIDE FOR ALL AGES	MANY MUNICIPAL PARKS	SAFER PEDESTRIAN CONNECTIONS	DCNR
PRESERVE RESOURCES	EXISTING TRAILS	DOG PARK	MONTGOMERY COUNTY
IMPROVE SAFETY FOR PEDESTRIANS & BICYCLES	EXISTING PLAYGROUNDS	“50 FOOT TALL WATER SLIDE”	LOCAL BUSINESSES

Next Steps

- **Committee Meeting 2 :**

Thursday, September 10, 2020 7:00 PM-9:00 PM

- **Public Meeting 1 :**

Monday, September 28, 2020 7:00 PM-9:00 PM

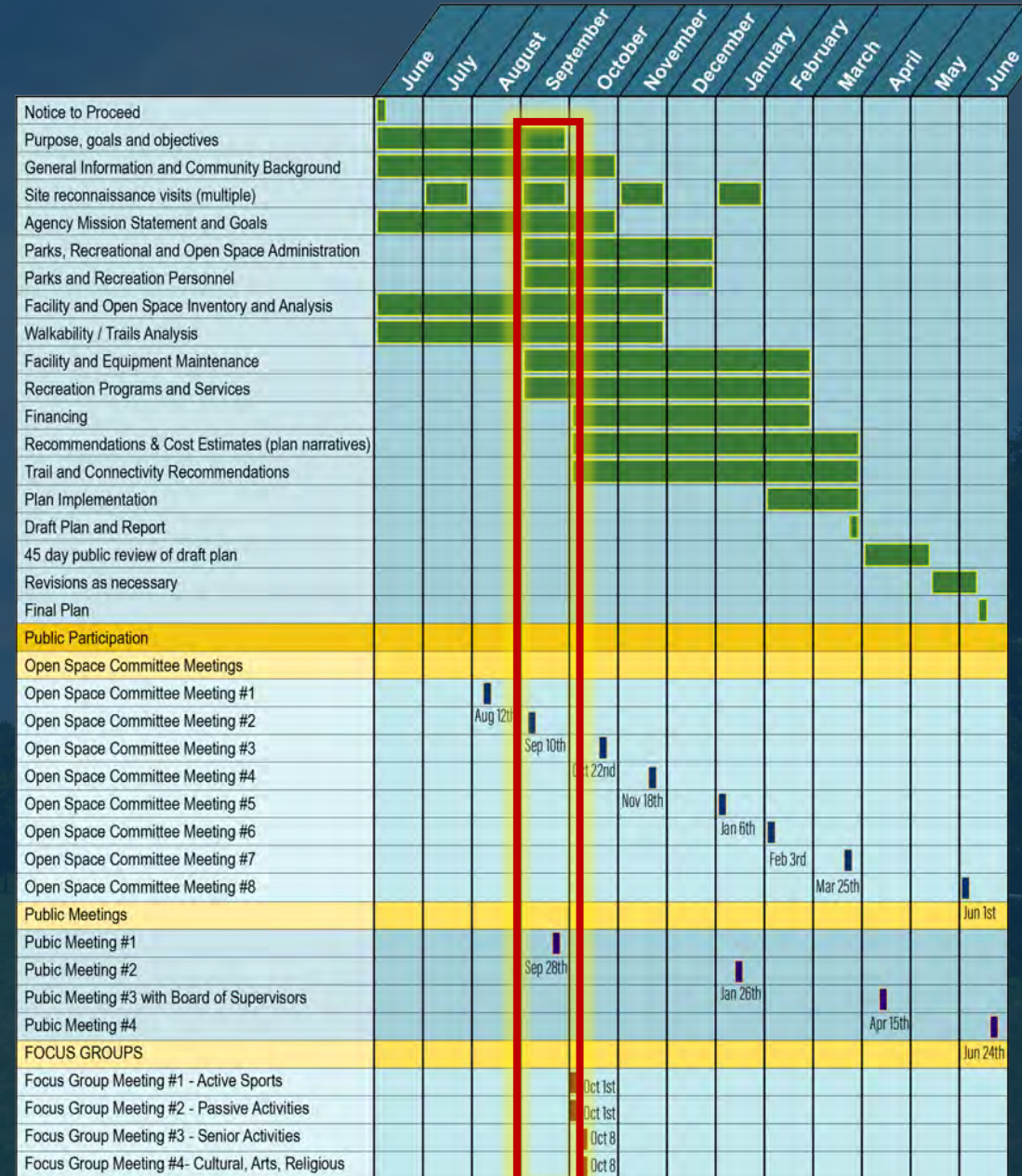
- Committee to review and approve online survey

**Public Opinion Survey Will Go Live Prior to Public Meeting 1
and will remain active until March 31st, 2021 at:**

<https://www.surveymonkey.com/r/LowerProvidenceParks>

- Wikimapping will be live Prior to Public Meeting 1 at :

wikimapping.com/Lower-Providence-Parks-and-Recreation.html



Next Steps

- **Committee Meeting 2 :**

Thursday, September 10, 2020 7:00 PM-9:00 PM

- **Public Meeting 1 :**

Monday, September 28, 2020 7:00 PM-9:00 PM

- Committee to review and approve online survey

Public Opinion Survey Will Go Live Prior to Public Meeting 1 at:

<https://www.surveymonkey.com/r/LowerProvidenceParks>

- Wikimapping will be live Prior to Public Meeting 1 at :

wikimapping.com/Lower-Providence-Parks-and-Recreation.html

	Meeting Title	Meeting Date
2020	Open Space Committee Meeting #1	Wednesday, August 12th
	Open Space Committee Meeting #2	Thursday, Sept 10
	Public Meeting #1	Monday, September 28
	Focus Group Meeting #1 - Active Sports	Thursday, Oct 1
	Focus Group Meeting #2 - Passive Activities	Thursday, Oct 1
	Focus Group Meeting #3 - Senior Activities	Thursday, Oct 8
	Focus Group Meeting #4- Cultural, Arts, Religious	Thursday, Oct 8
	Open Space Committee Meeting #3	Thursday, Oct 22
	Open Space Committee Meeting #4	Wednesday, November 18
2021	Open Space Committee Meeting #5	Wednesday, January 6
	Public Meeting #2	Tuesday, January 26
	Open Space Committee Meeting #6	Wednesday, February 3
	Open Space Committee Meeting #7	Thursday, March 25
	Key Person Interviews (12)	Dates TBD
	Web Based Survey - write and administer	Oct 1 through April 1
	Wiki - Mapping interactive community mapping	Oct 1 through April 1
	Public Meeting #3 with Board of Supervisors	Thursday, April 15
	Open Space Committee Meeting #8	Tuesday June 1
	Public Meeting #4	Thursday, June 24

Thank You

Contact Information:

SIMONE COLLINS LANDSCAPE ARCHITECTURE - 610.239.7601

Peter Simone, RLA, FASLA, Principal

psimone@simonecollins.com

Pankaj Jobanputra, AICP, Project Manager

pjobanputra@simonecollins.com

Geoff Creary, Land. Arch., Connectivity Expert / Graphics

gcreary@simonecollins.com

Joseph Wallace, Staff Landscape Architect

jwallace@simonecollins.com

Michelle Armour, Staff Landscape Architect

marmour@simonecollins.com

