



Parks, Recreation & Open Space Plan Public Meeting 4 – June 24, 2021



*Welcome, and thank you for attending.
The live presentation will start promptly at 7:00 PM.
Please note that this presentation is being recorded.*

*During the presentation, please type questions into the Q&A box.
Questions will be answered during the Q&A segment.
Feel free to sign in by entering your name in the Q&A box when joining.*

*If you are listening on a phone, you will be muted on entry and
instructions will be provided on how to unmute and participate.*

Agenda

- Introductions
- Project Scope & Schedule
- Project Goals & Objectives
- Updated Survey & Wikimapping Results
- Plan Recommendations
 - Facilities Improvements
 - Open Space Preservation
 - Potential Open Space and Recreation Acquisition
 - Greenway Recommendations
 - Multimodal Connections
 - Maintenance and Programming
 - Priority Recommendations
 - Cost Estimates
- Next Steps

Open Space Committee

- **Colleen Eckman** - Supervisor
- **Jean Akers** - Chair for Open Space Committee and member of Park Board Committee
- **Susan LaPenta** – Township Planning Commission
- **Bill Brooke** – Township Planning Commission
- **Erin DiPaolo** - Township Park Board Committee
- **Beth Ann Mazza** – Township Park Board Committee
- **Katherine McGrath**- Township Park Board Committee – Student Representative
- **Jane Delaney** – Parks and Recreation Director
- **Donald Delamater**- Township Manager



Project Scope & Schedule

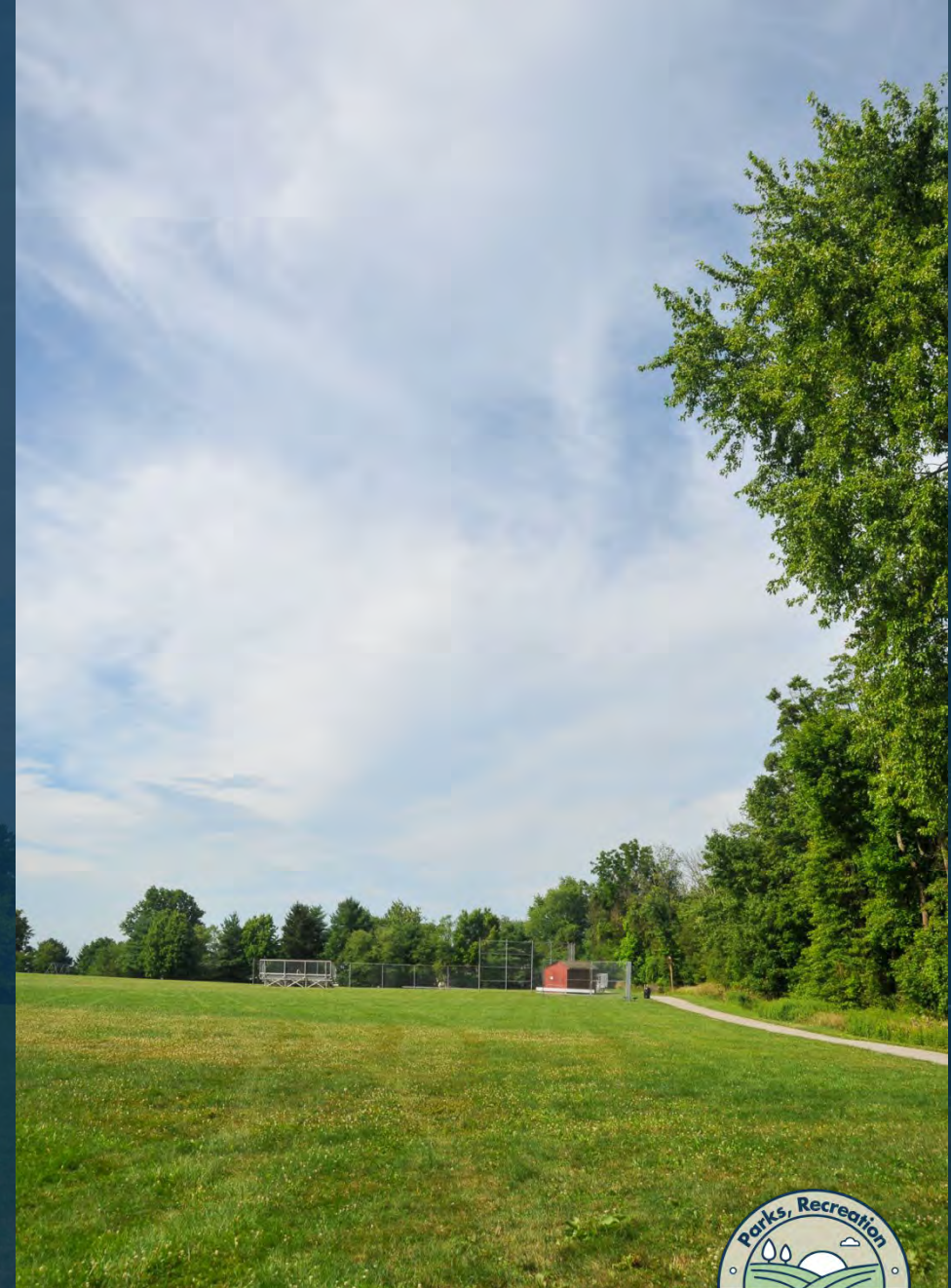
- Existing conditions inventory and data collection
- Activities and facilities analysis
- Site reconnaissance
- Public participation
 - 4 committee meetings
 - 4 public meetings
 - Key persons interview
 - Public opinion survey
- Vision goals and objectives
- Report with recommendations for open space, recreational facilities and programming, and multi-modal and greenway connections
- Implementation strategies
- Regulations, management, planning and financing

	Meeting Title	Meeting Date
2020	Open Space Committee Meeting #1	Wednesday, August 12th
	Open Space Committee Meeting #2	Thursday, Sept 10
	Public Meeting #1	Monday, October 26
	Open Space Committee Meeting #3	Wednesday, November 18
	Focus Group Meeting #1 - Active Sports	Late November
	Focus Group Meeting #2 - Passive Activities	Late November
	Focus Group Meeting #3 - Senior Activities	Early December
	Focus Group Meeting #4- Cultural, Arts, Religious	Early December
2021	Open Space Committee Meeting #4	Wednesday, January 6
	Public Meeting #2	Tuesday, January 26
	Open Space Committee Meeting #5	Wednesday, February 3
	Open Space Committee Meeting #6	Thursday, March 25
	Key Person Interviews (12)	Dates TBD
	Web Based Survey - write and administer	Oct 1 through April 1
	Wiki - Mapping interactive community mapping	Oct 1 through April 1
	Public Meeting #3 with Board of Supervisors	Thursday, April 15
	Open Space Committee Meeting #7	Tuesday June 1
	Public Meeting #4	Thursday, June 24

***Tonight Is The Final Public Meeting**

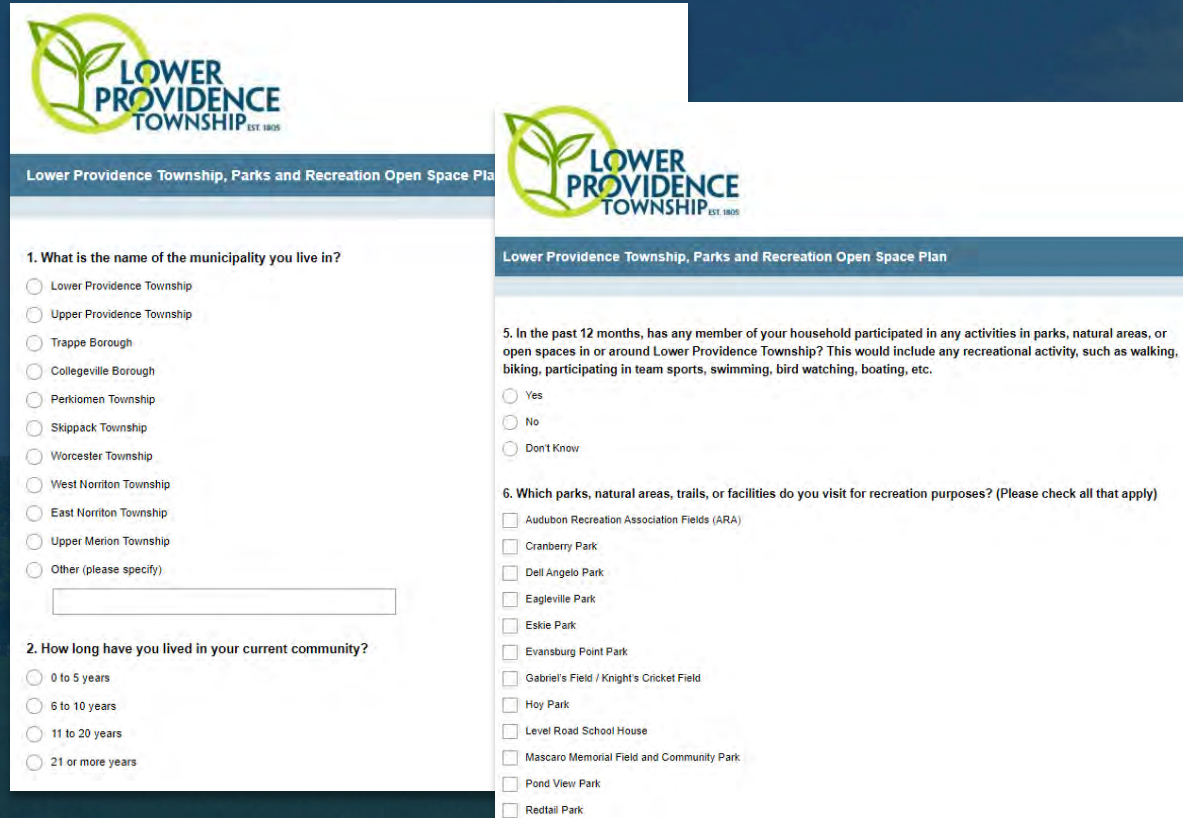
Plan Goals

- Create a **sustainable plan** for parks, recreation and open space
- Provide **equitable access** and opportunities to all residents
- Preserve cherished Township characteristics and **valued natural resources**
- Plan for **safe multi-modal connections** between various Township park, recreation, and open space resources



Public Survey Results

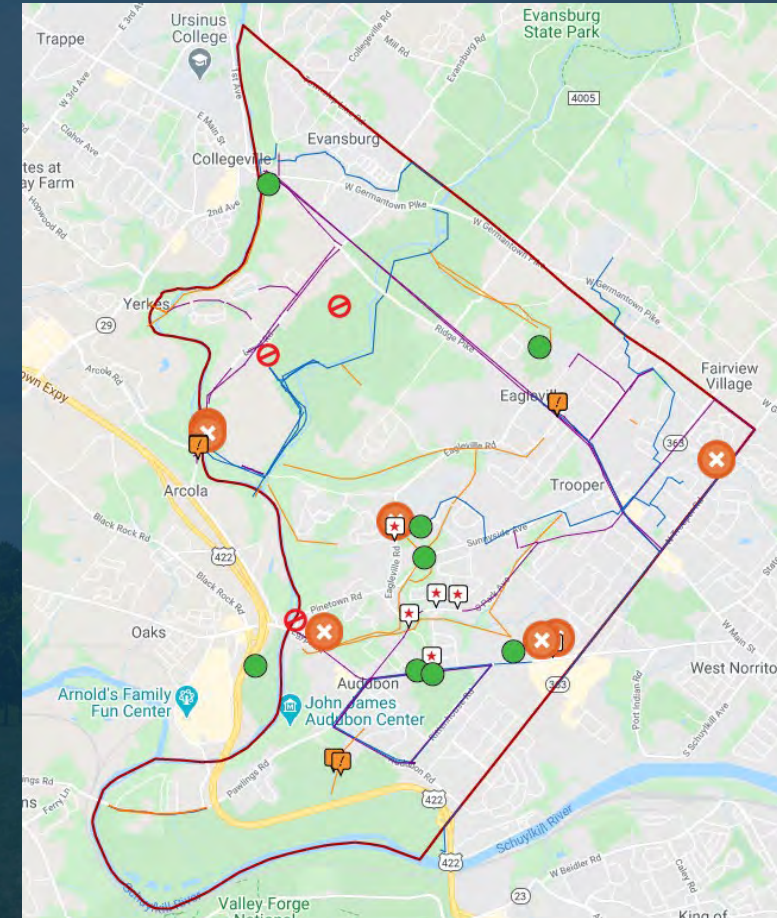
648 TOTAL completed surveys



The image shows a screenshot of a survey form titled "Lower Providence Township, Parks and Recreation Open Space Plan". The form includes the township's logo and two main sections of questions. Section 1 asks for the municipality of residence, with radio button options for Lower Providence Township, Upper Providence Township, Trappe Borough, Collegeville Borough, Perkiomen Township, Skippack Township, Worcester Township, West Norriton Township, East Norriton Township, Upper Merion Township, and an "Other" field. Section 2 asks for the duration of residence in the current community, with radio button options for 0 to 5 years, 6 to 10 years, 11 to 20 years, and 21 or more years. Section 5 asks if any household member participated in park activities in the last 12 months, with radio button options for Yes, No, and Don't Know. Section 6 asks which parks or facilities are visited, with checkboxes for Audubon Recreation Association Fields (ARA), Cranberry Park, Dell Angelo Park, Eagleville Park, Eskie Park, Evansburg Point Park, Gabriel's Field / Knight's Cricket Field, Hoy Park, Level Road School House, Mascaro Memorial Field and Community Park, Pond View Park, and Redtail Park.

WikiMapping Results

102 TOTAL WikiMap comments



Public Survey Results – 648 total completed surveys

Top 5 priorities that Lower Providence should focus on:

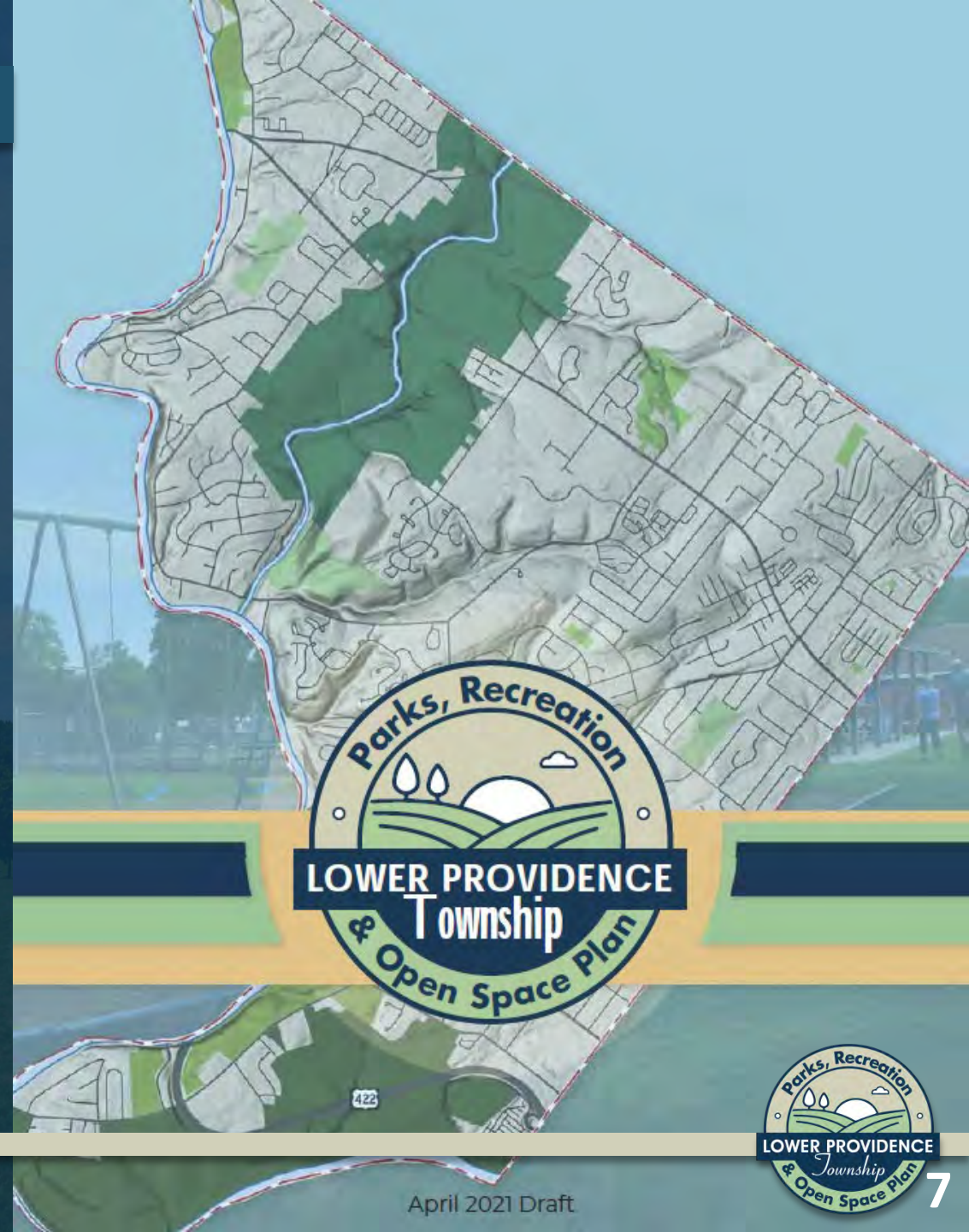
1. Open Space and Natural Resources Preservation: **42%**
2. Pedestrian Connections: **40%**
3. Trails: **31%**
4. Bike Lanes: **28%**
5. Improvements to Existing Facilities: **22%**

- **91%** live in Lower Providence
- **42%** of those in Lower Providence have lived in the Township for 21+ years
- **53%** of all respondents are between the ages of 45-64
- **Most respondent households have 2 members**
- **94%** of these households had members who participated in recreation in parks, natural areas, or open spaces in/around Lower Providence in the last year
- **91%** walk, run or bike on area trails or roadways
- **92%** of respondents drive to area parks; 81% feel that there are an adequate number of parks, natural areas and trails available to them or in close proximity to where they live

Draft Report Comments

*The draft report comment period was from
APRIL 22, 2021 to **MAY 27, 2021***

*A total of **120** comments were
received from 42 individuals
(including comments from committee)



Plan Recommendations



Report Structure

The Lower Providence Parks, Recreation & Open Space plan is organized by the following categories:

Facility Improvements



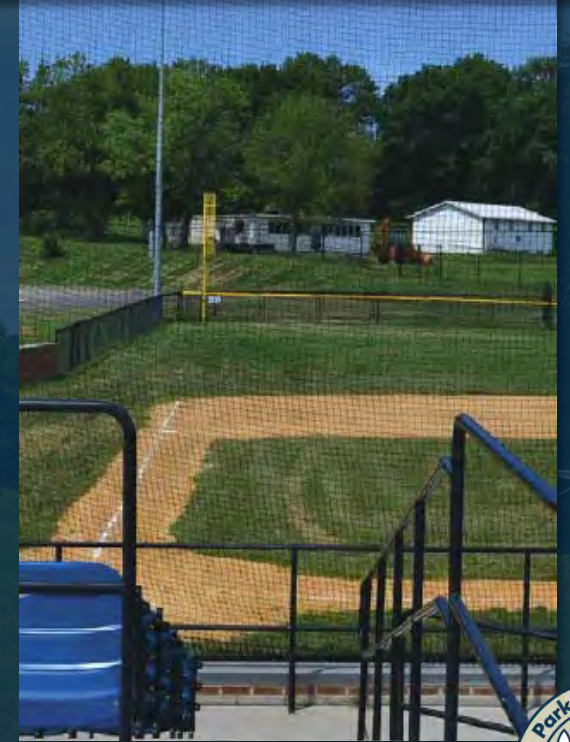
Open Space Preservation



Multi-Modal Improvements



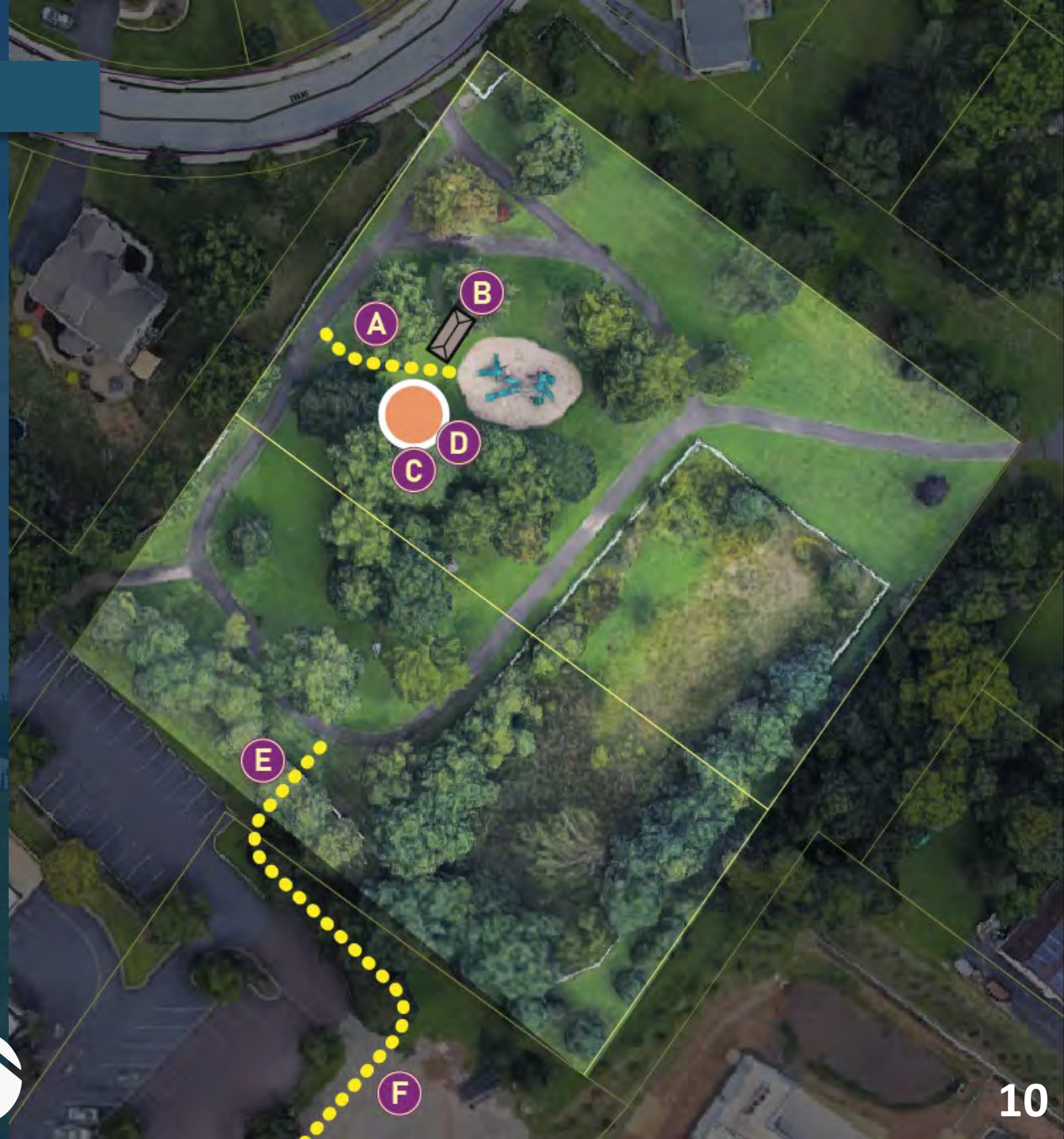
Maintenance & Programming



Facilities Improvements – Dell Angelo Park

- Conceptual Improvements

- A** ADA Access Path to Playground (concrete)
- B** Small Pavilion
- C** Swingset (Four Seats / Two Bays)
- D** Swingset Safety Surface Area
- E** Ridge Pike Sidewalk Connection
- F** Park Signage Along Ridge Pike; potential lot for acquisition / park expansion



Facilities Improvements – Eagleville Park

- Conceptual Improvements
 - A Improve ADA path to bocce courts
 - B Pave and formalize parking area.
 - C Field Option A: Aerate & seed; Field Option B: Make turf field, stormwater BMP
 - D Improve parking entry and wayfinding signage.



- **Conceptual Improvements**

- A Improve ADA path to bocce courts
- B Pave and formalize parking area.
- C Field Option A: Aerate & seed; Field Option B: Make turf field, stormwater BMP
- D Improve parking entry and wayfinding signage.



Facilities Improvements – Eagleville Park

- Conceptual Improvements

- E** Make restroom entrance ADA accessible.
- F** Expand swing safety surface area.
- G** New Amphitheater in upper lawn.
- H** Provide ADA picnic tables, repurpose shuffleboard court for horseshoes or other activity.
- I** Make pathway ADA accessible.
- J** Convert amphitheater stage to pavilion. Move amphitheater to area G.

Additional Improvements

- Protective plastic guards to Gaugler baseball field fence.
- Move park sign at the entrance for improved visibility.
- Partner with Perkiomen Watershed Conservancy to naturalize basin behind library.



G New Amphitheater in upper lawn - EXISTING



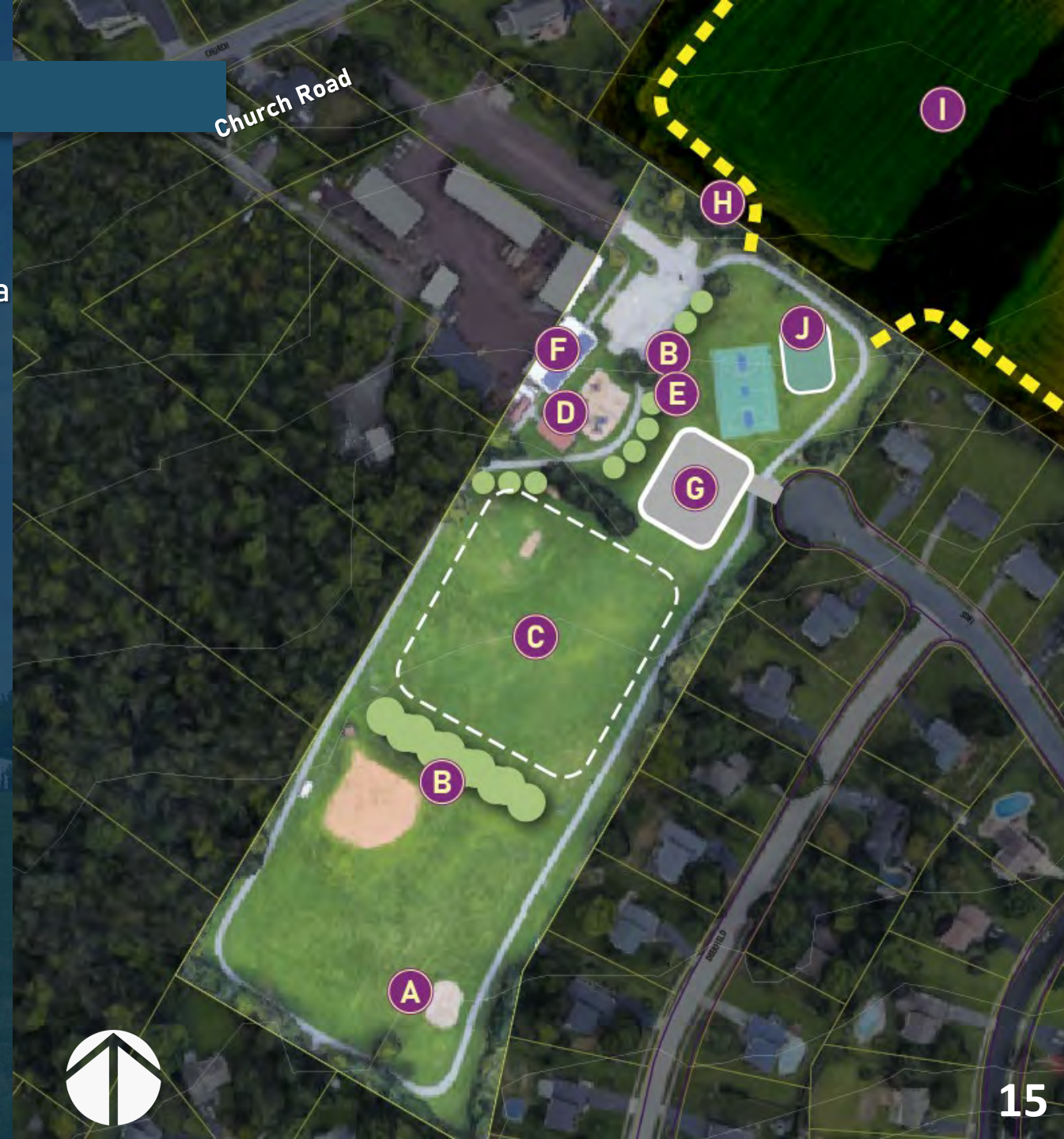
G New Amphitheater in upper lawn - PROPOSED



Facilities Improvements – Eskie Park

- Conceptual Improvements

- A** Expand Swingset & Playground Safety Surface Area
- B** Shade Trees
- C** Re-grade for Multi-Use Field
- D** ADA Picnic Tables
- E** ADA Benches
- F** BMP Plantings
- G** Additional Parking - 25 Spaces
- H** Eskie Loop Trail Extension
- I** Possible Land Acquisition
- J** Pickleball Court



Facilities Improvements – Evansburg Point Park

- Conceptual Improvements (Have to be approved by DCNR)

- A** Connection to Level Road.
- B** Plant shade trees.
- C** Upgrade snack shack facility.
- D** Provide ADA picnic pavilion access & ADA picnic tables.
- E** Install turf field
- F** Plant shade trees.
- G** Reduce mown area, plant area with native grasses / wildflowers.
- H** Develop stormwater basin.



G Reduce mown area, plant area with native grasses / wildflowers - EXISTING



G Reduce mown area, plant area with native grasses / wildflowers - PROPOSED

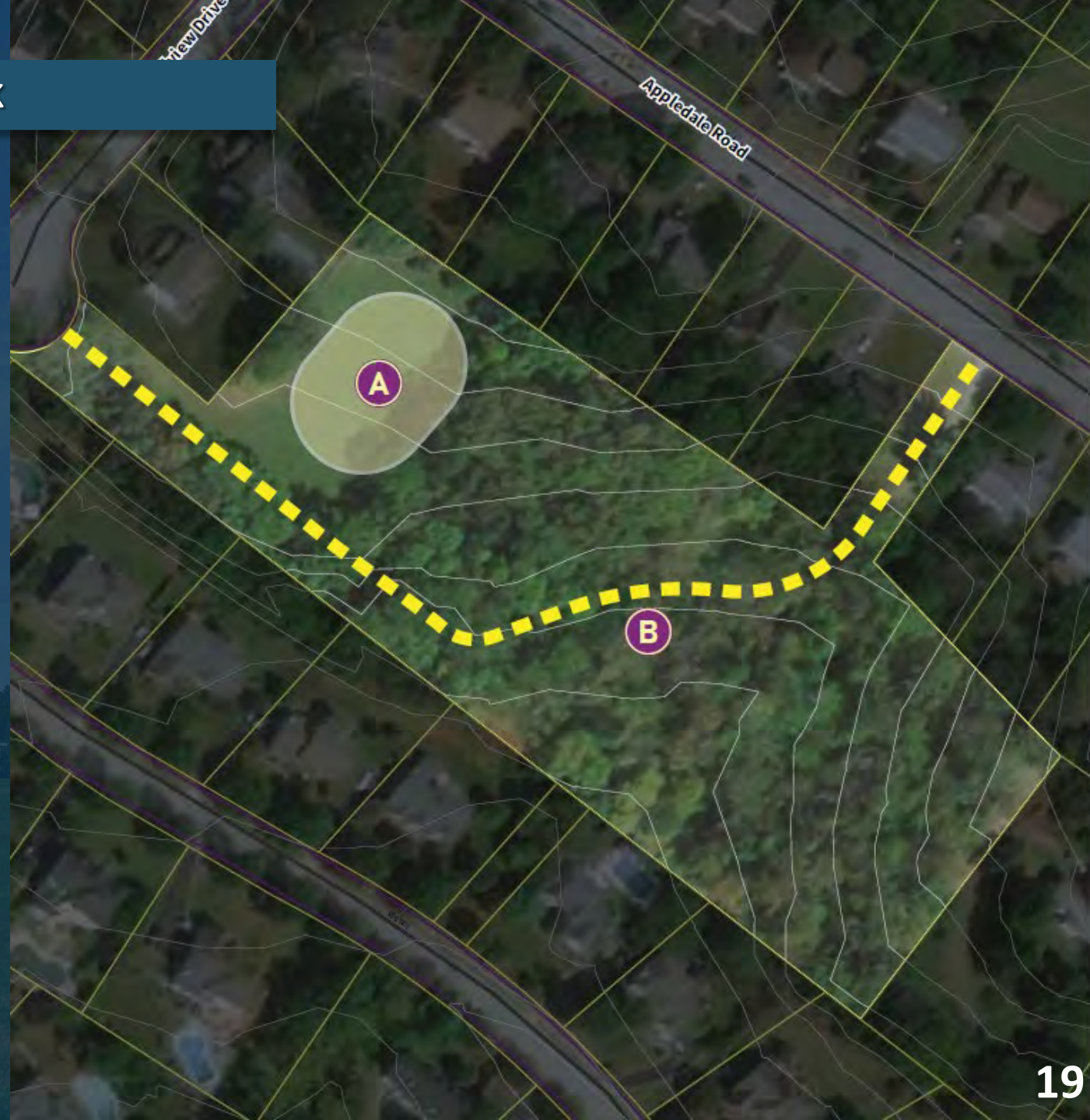


Facilities Improvements – Pond View Park

- Conceptual Improvements

A Songbird & Habitat Meadow

B 3-5' Wide Earthen Trail

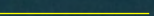
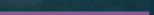



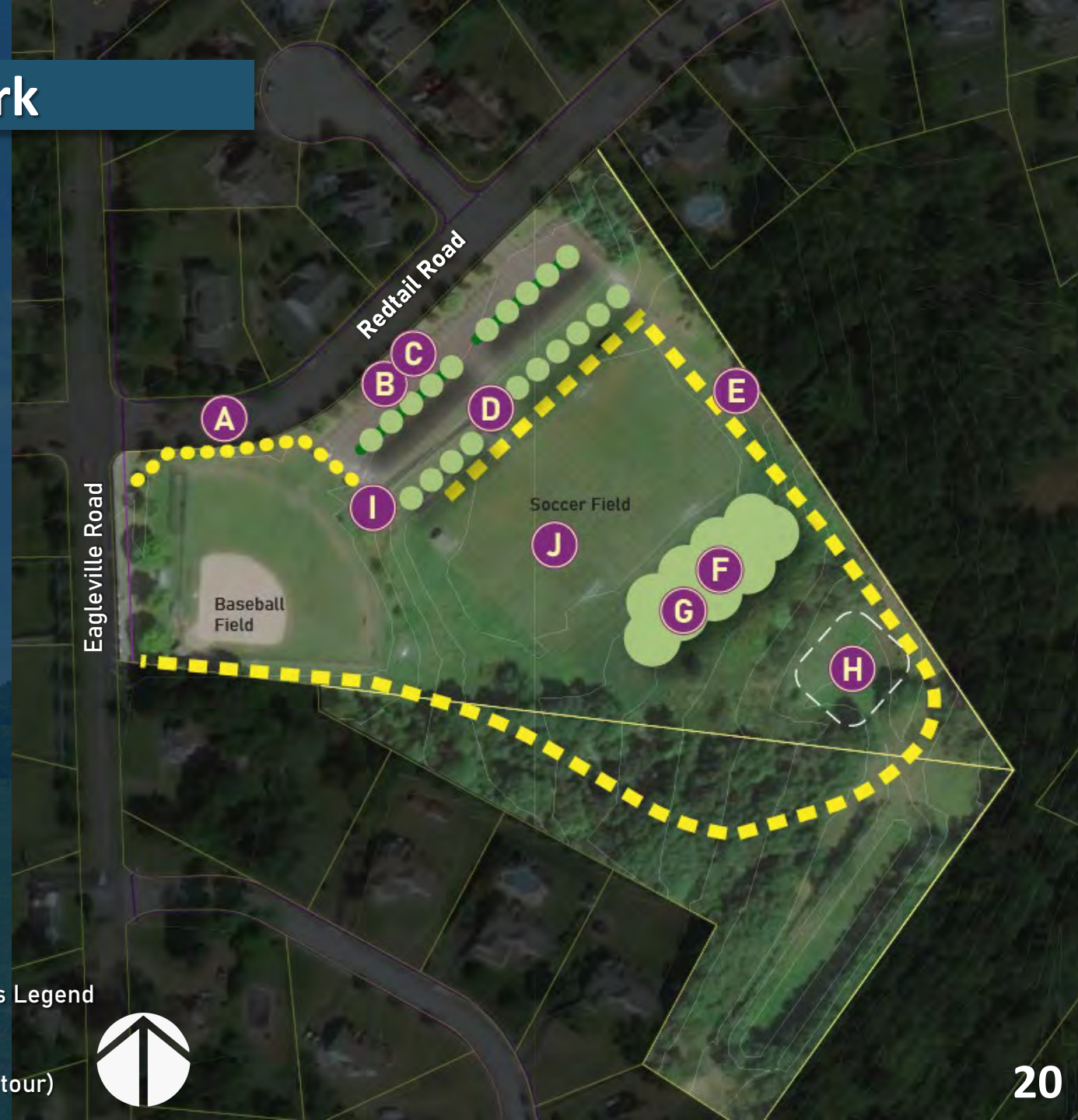
Facilities Improvements – Redtail Park

- Conceptual Improvements

- A** Sidewalk Connection to Eagleville Rd
- B** Parking Area: Shade Trees
- C** Parking Area: Stormwater BMP
- D** Shade Trees
- E** Perimeter Trail (stone dust)
- F** Remove Debris & Amend Soil
- G** Shade Trees
- H** Improve Existing Stormwater Basin
- I** Restroom Facility - on Concrete Pad, w Electrical & Water Service
- J** Grade and Seed Field

Existing Conditions Legend

-  Parcel Line
-  Sidewalk
-  Topography (1' Contour)





Shade Trees - EXISTING

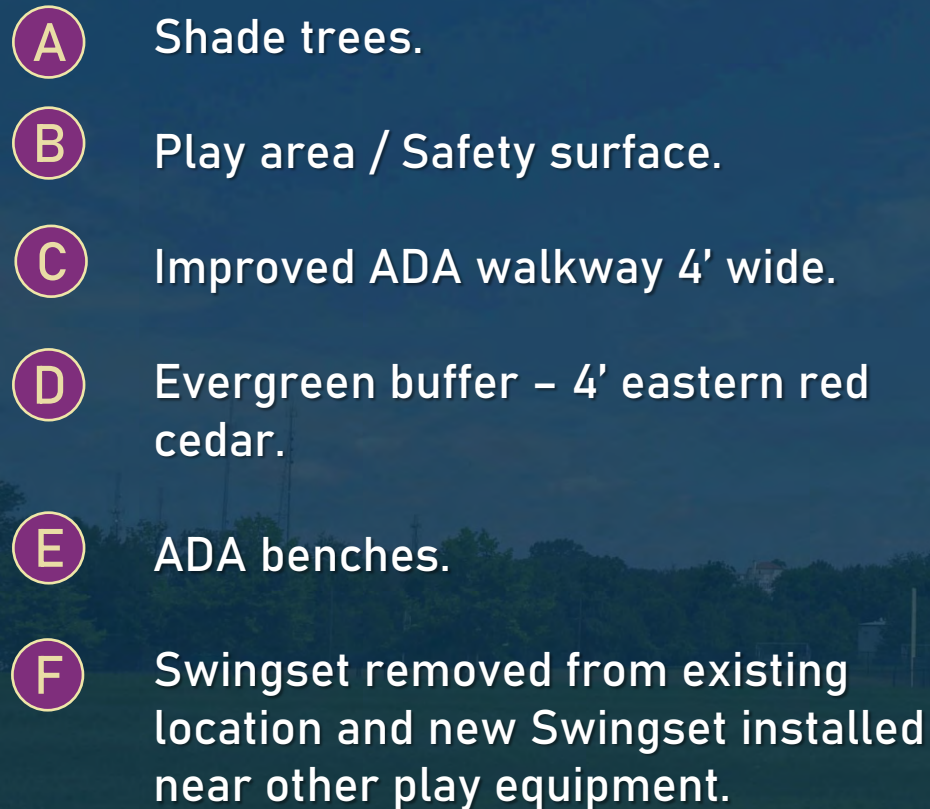


Shade Trees - PROPOSED

Park

23

- **Conceptual Improvements**

- 
- A Shade trees.
 - B Play area / Safety surface.
 - C Improved ADA walkway 4' wide.
 - D Evergreen buffer – 4' eastern red cedar.
 - E ADA benches.
 - F Swingset removed from existing location and new Swingset installed near other play equipment.





Sherwood Park - EXISTING



Sherwood Park - PROPOSED

Facilities Improvements – Mascaro Field

- Privately owned Mascaro facility – Township has lease to use existing baseball fields. Future open space improvements to be approved by private owner.

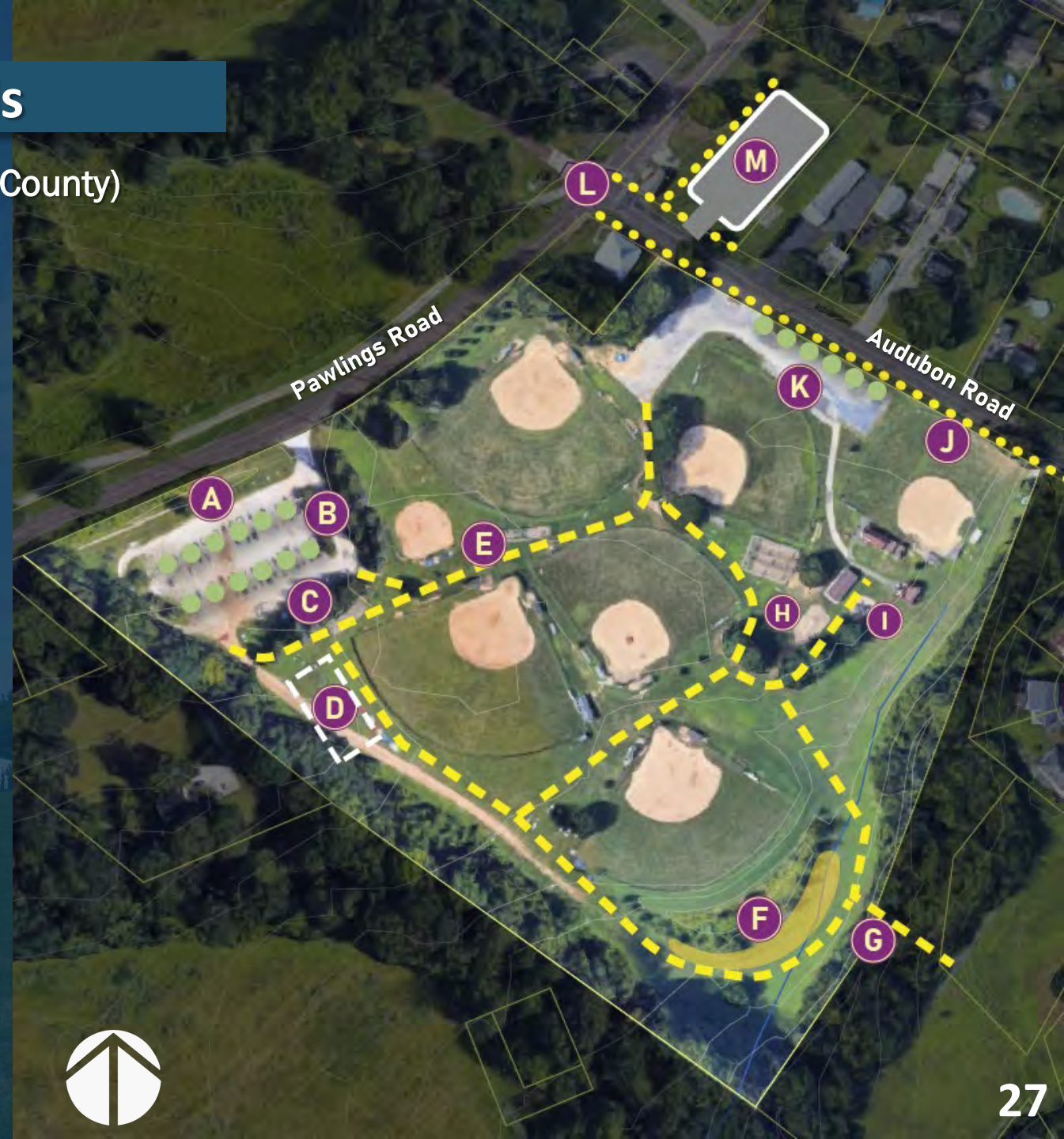
- A** Native meadow plantings.
- B** Future baseball facilities (planned by Mascaro Group)



Facilities Improvements – MARA Fields

- Conceptual Improvements (Have to be approved by the County)

- A** Naturalize & Improve Stormwater Basin
- B** Shade Trees in Parking Area
- C** Thin Tree Buffer for Security & Visibility
- D** Pavilion, 24' x 44'
- E** ADA Pathway Between Ballfields (stone dust)
- F** Native Meadow Plantings
- G** New Footbridge
- H** Expand Swingset Safety Surface Area
- I** Expand Playground Safety Surface Area
- J** Sidewalk Connection Along Audubon Road
- K** Shade Trees Along Audubon Road
- L** Pedestrian Intersection Improvements
- M** 30 car parking area, coordinate with Montgomery County



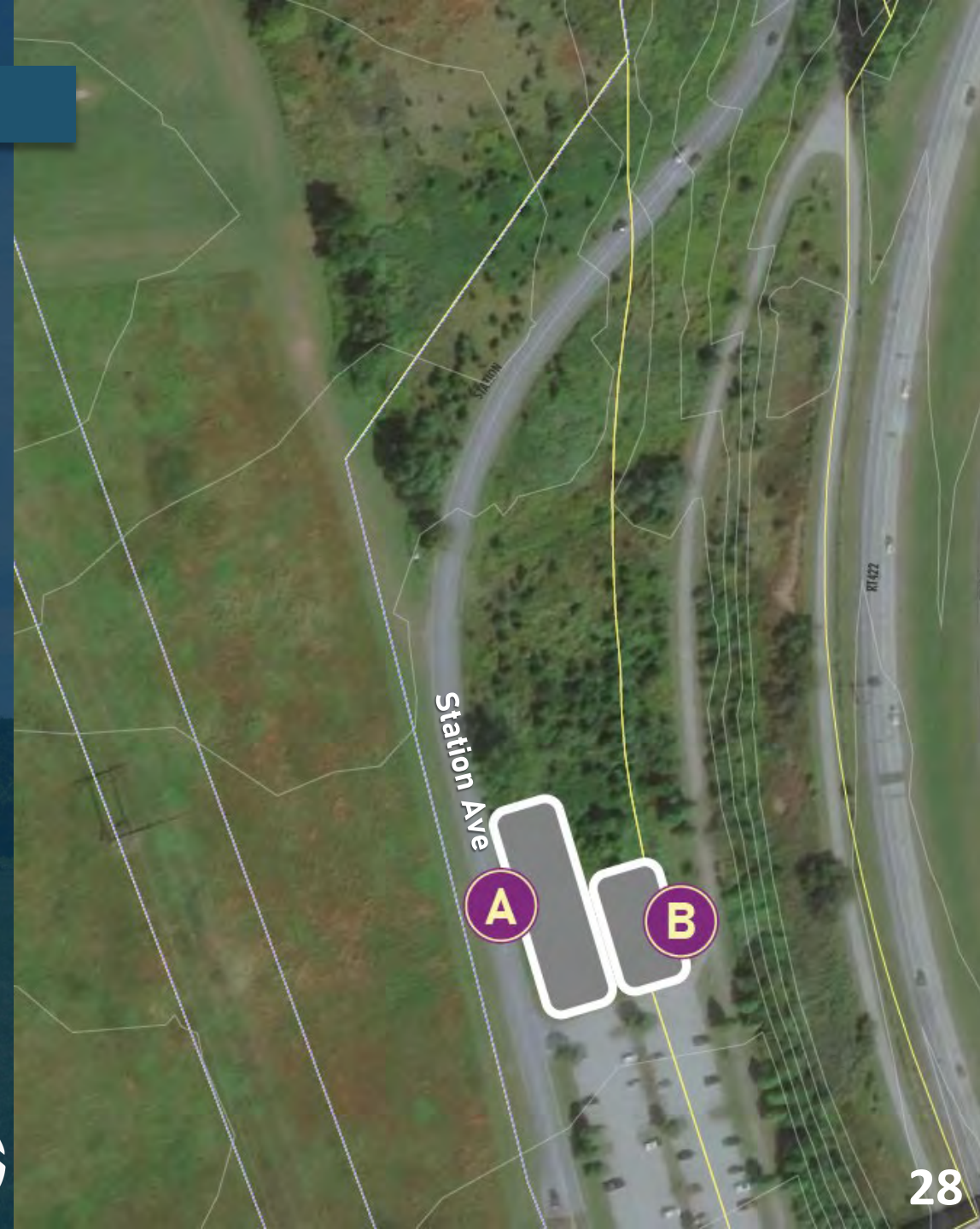
Facilities Improvements – Knights Cricket Field

- Conceptual Improvements (Have to be approved by the County)

- A** Pawlings Rd. trailhead parking expansion.
- B** Restroom facility – on concrete pad, w electrical & water service

Additional Improvements

- Dog park facility
- Mown loop trail
- Additional parking west of Station Avenue to serve cricket field & future dog park facility



Adopt Official Map

- An official map is an effective negotiation tool for municipalities, helping to ensure long-term preservation of open space.

An Official map can include but is not limited to:

- Existing and proposed public parks, playgrounds and open space reservations
- Existing and proposed off-road trail alignments
- Flood control areas, floodways and floodplains, stormwater management areas and drainage easements.



Open Space Preservation

Option A: Develop for active recreation facilities.

Option B: Preserve Agriculture Fields

- Lower Providence Township has minimal preserved agricultural lands, in this option LP can purchase and permanently preserve this agriculture area
- Lower Providence should consider working with Worcester Twp. in a coordinated effort to preserve open space.



- Owner: **KeyBank**
- Size: **27 Acres**
- Characteristics: Agricultural fields

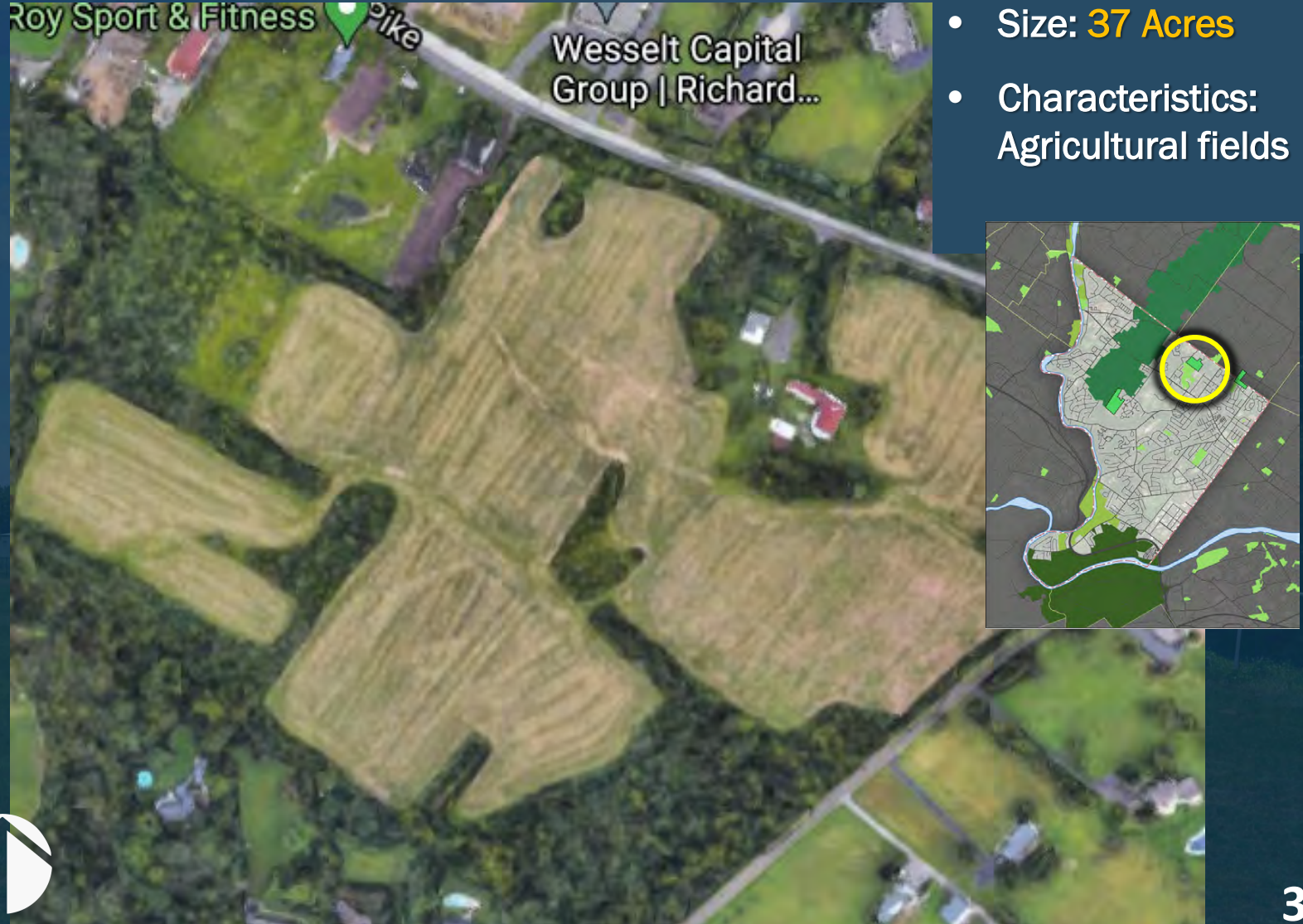


Open Space Preservation

Preserve Agriculture Fields

- Lower Providence Township has minimal preserved agricultural lands, in this option LP can purchase and permanently preserve this agriculture area

- Owner: **Cicchiello**
- Size: **37 Acres**
- Characteristics: Agricultural fields



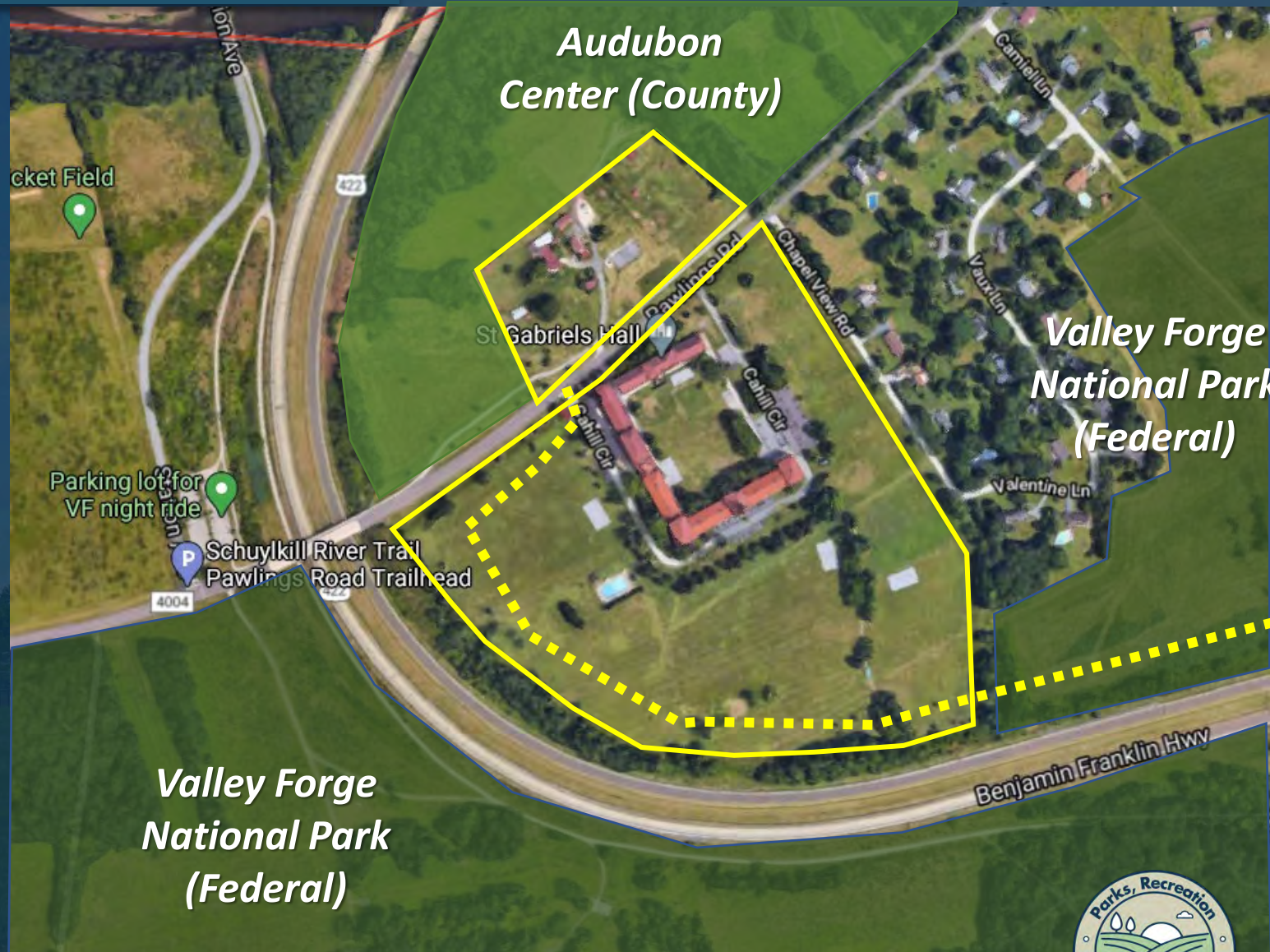
Open Space Preservation

- Owner: J. Heyser (identified in 2002/2005 OS&R Plan; BooBoo Realty)
- Size: 36 Acres; 17.5 Acres
- Characteristics: Wooded / dense vegetation
- Contains tributary to Skippack Creek



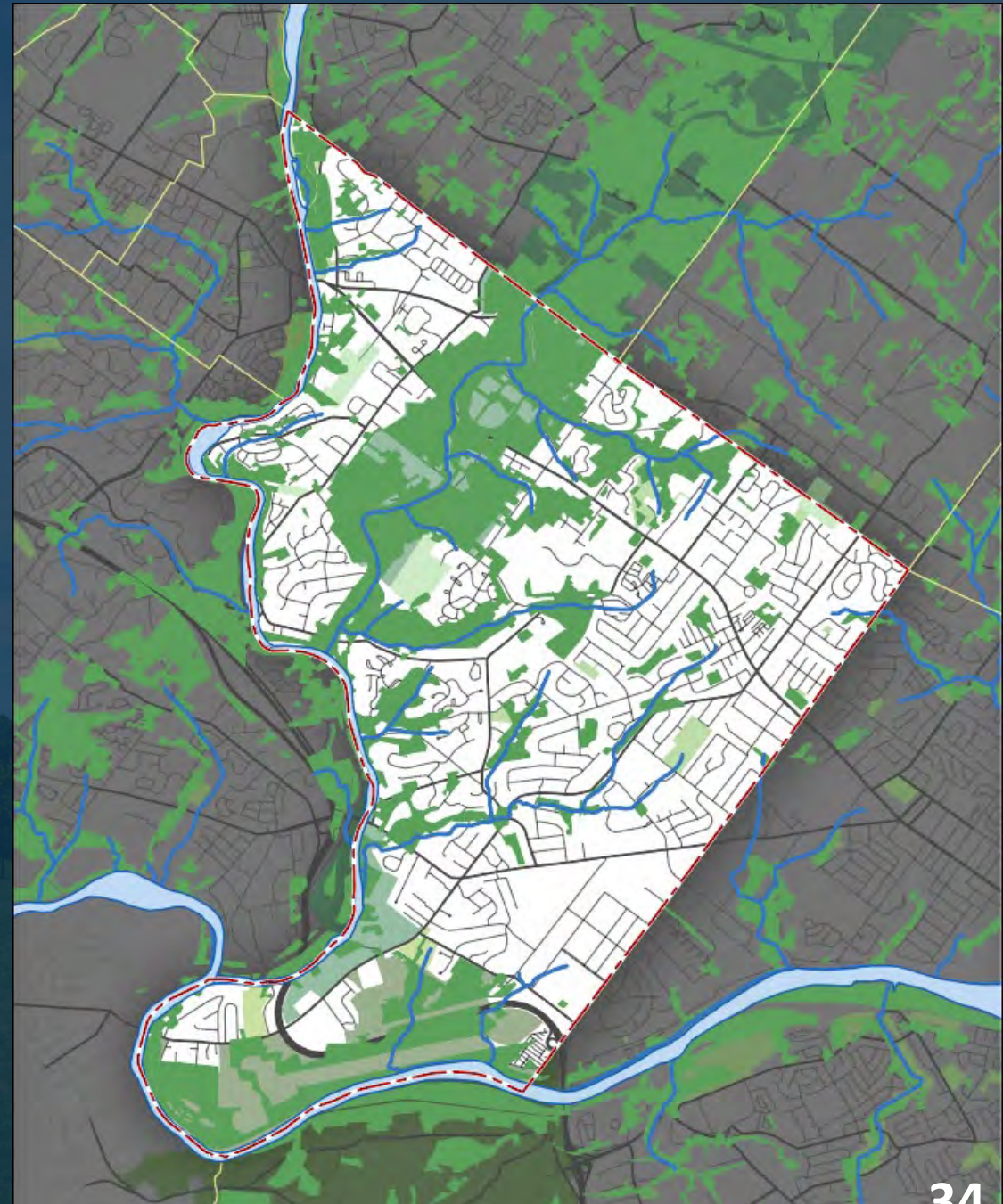
Open Space Preservation

- Owner: **St. Gabriels Property (Philadelphia Protectory For Boys)** – identified in 2002/2005 OS&R Plan
- Size: **46.5 Acres**
- Potentially use St. Gabriels land (not building) to connect Audubon Center to Valley Forge & protect landscape
- Acquisition can connect ballfields and underutilized portion of Valley Forge Park
- Local, County, & Federal Project
- Could be potential application for future official map – designate fields as open space
- Continue use of community garden on the northern parcel

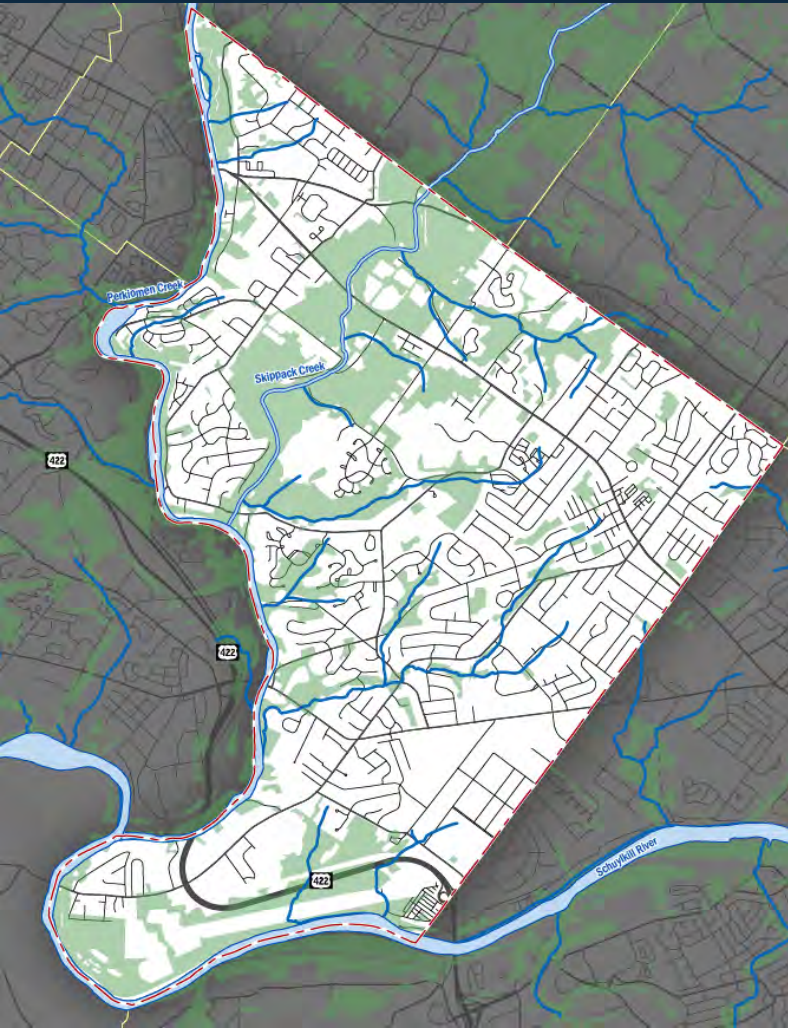


Greenway Recommendations

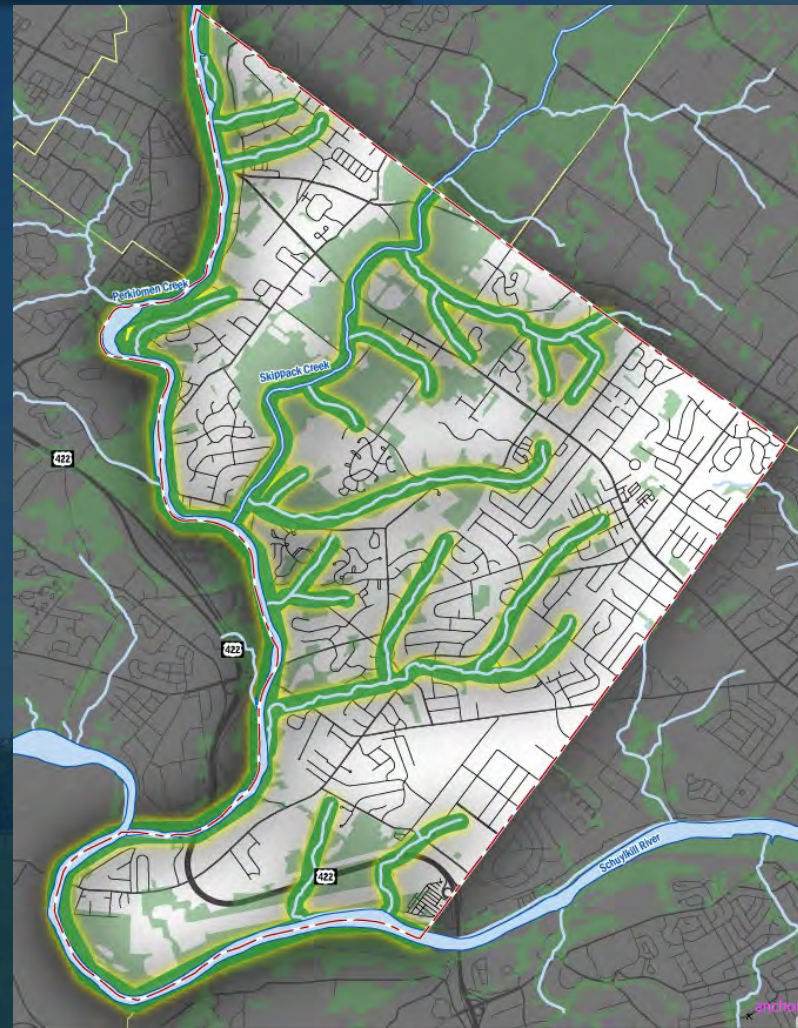
- The primary purpose to designate a “Greenway”:
 - Foster the preservation and protection of critical habitats
 - Protect and enhance the water quality
 - Greenways may or may not contain a trail or allow access
- Additional Greenways should be considered along hydrologic resources and extend from existing Township-owned parcels.
- In Lower Providence Township they are protected under **ARTICLE XXXIV (Riparian Buffer Overlay Zone)** This ordinance regulates land use to ensure natural resources are preserved and protected.



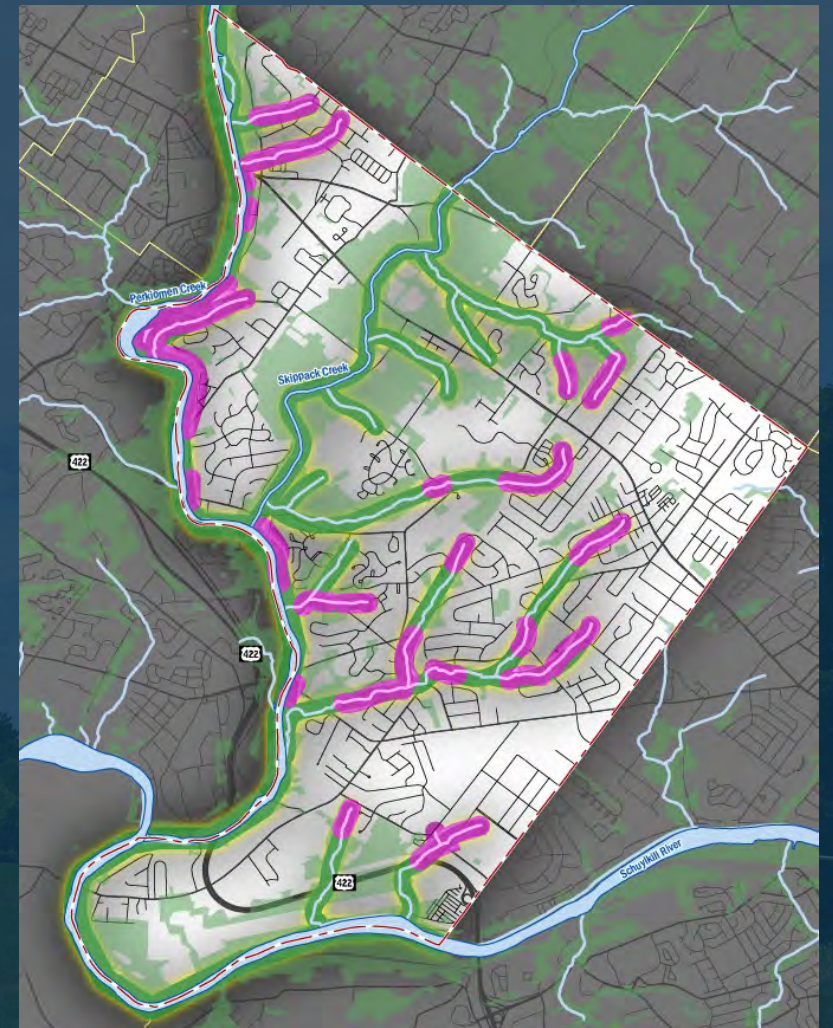
Greenway Recommendations



- *Existing Greenways & Waterways*

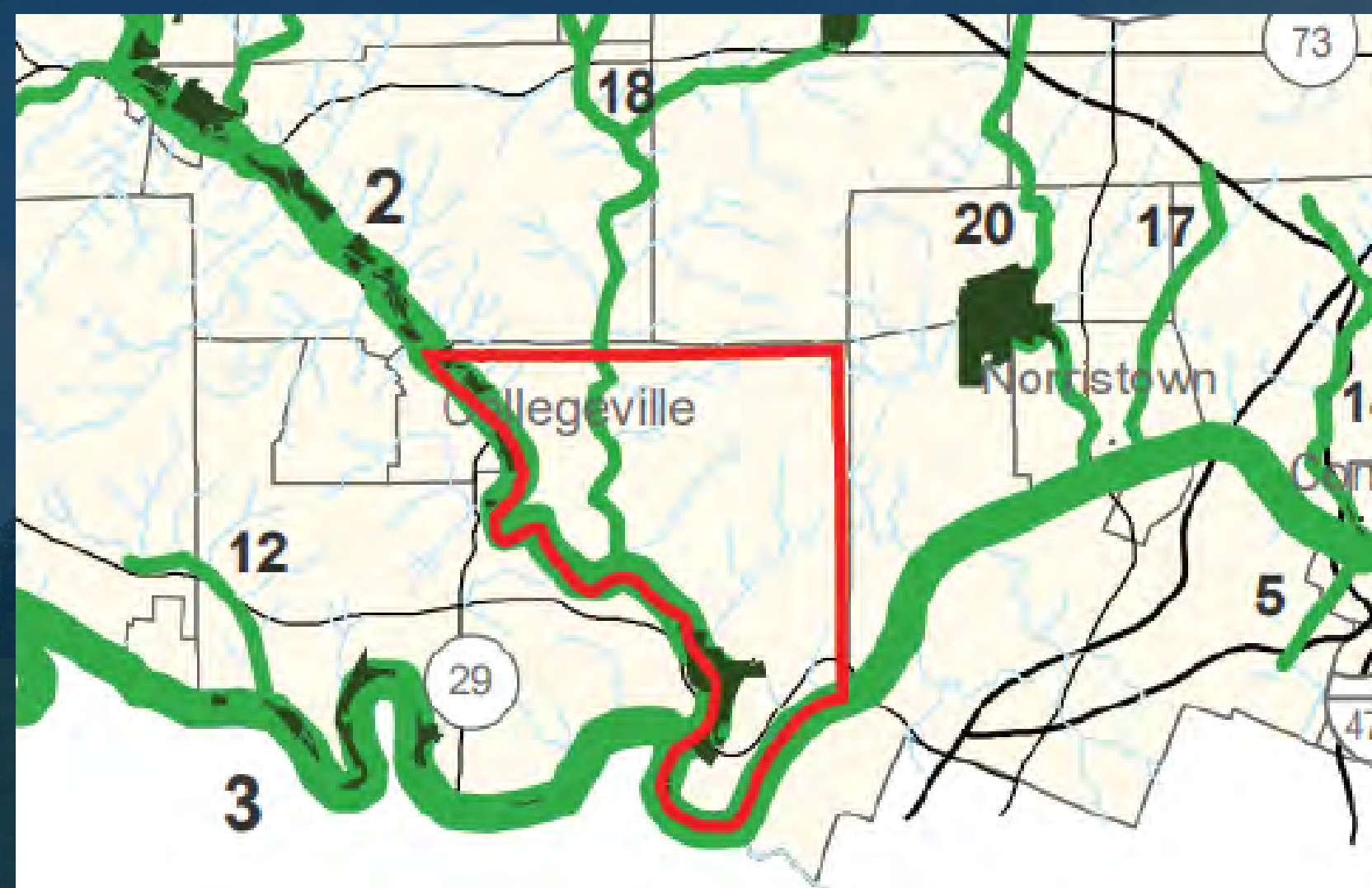


- *Ideal Riparian Greenway Corridors*




- *Gaps in Greenway vegetation cover*


Greenway Recommendations



Lower Providence greenways identified in the Montgomery County 2040 Comprehensive Plan :

 Primary Greenway

- Perkiomen Greenway
- Schuylkill Greenway

 Secondary Greenway

- Skippack Greenway

Critical parcels along these greenways should be considered for preservation through the Official Map or acquisition (if / when possible)

Greenway Recommendations

Successful greenway expansion & improved water quality will require action by local government and private citizens.

The Township has done a great job of acquiring key greenway parcels, and will need the help of private citizens, as the Township is largely built-out.

- Create program for revegetation of greenway cover gaps
- Consider retroactive application of greenway buffer ordinance as a means to better address MS-4 mandate

Local Government

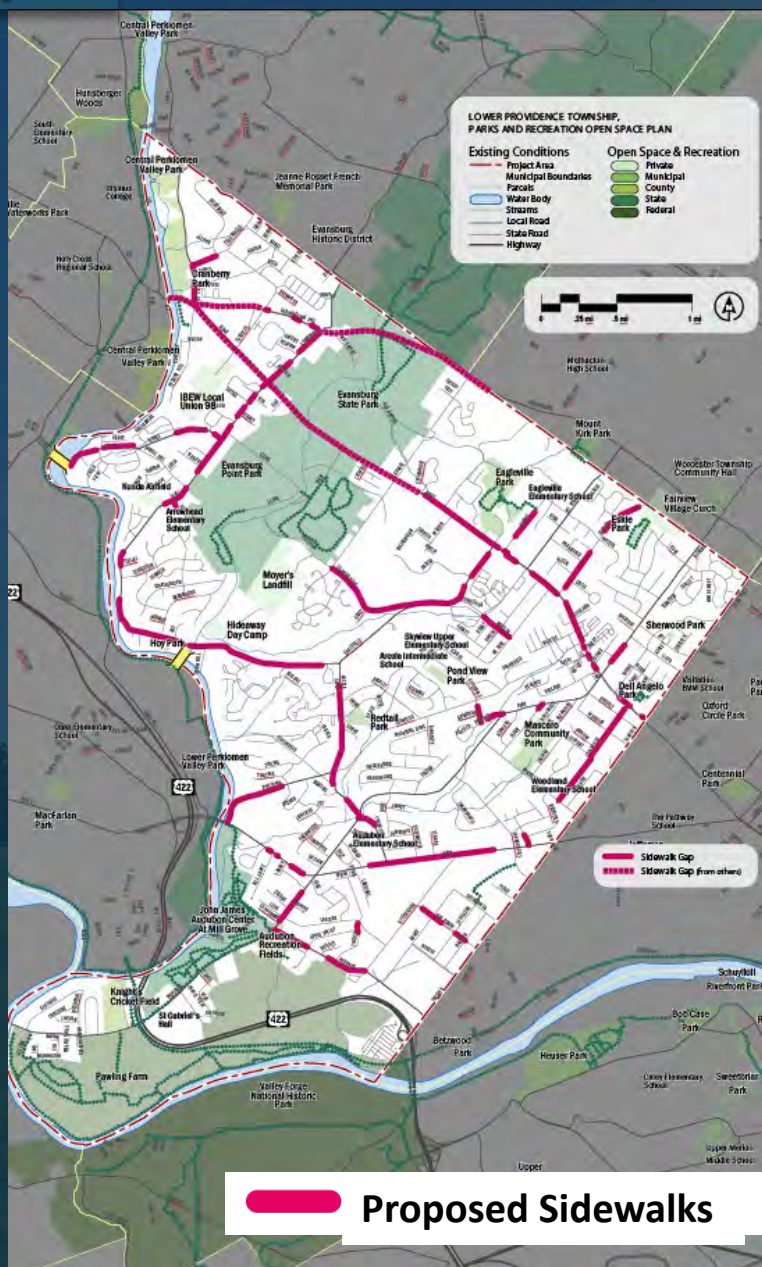
- Set vision
- Secure larger parcels for greenway expansion
- Encourage / incentivize private conservation efforts

Property Owners & Private Citizens

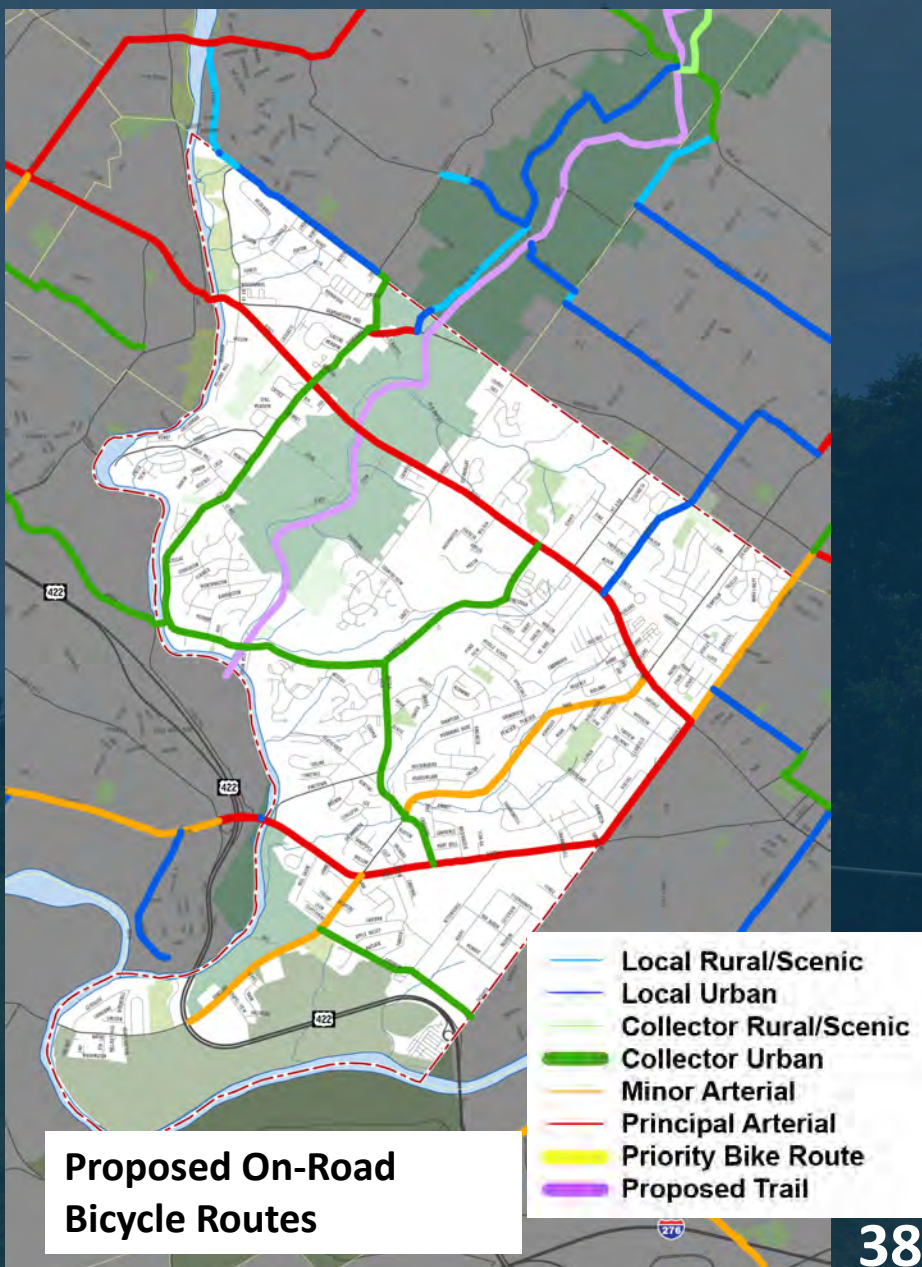
- Reduce large lawn areas, replace with meadows & grasses
- Limit pesticide use
- Plant native / diverse tree species

GOAL:
Healthy & Clean
Waterways

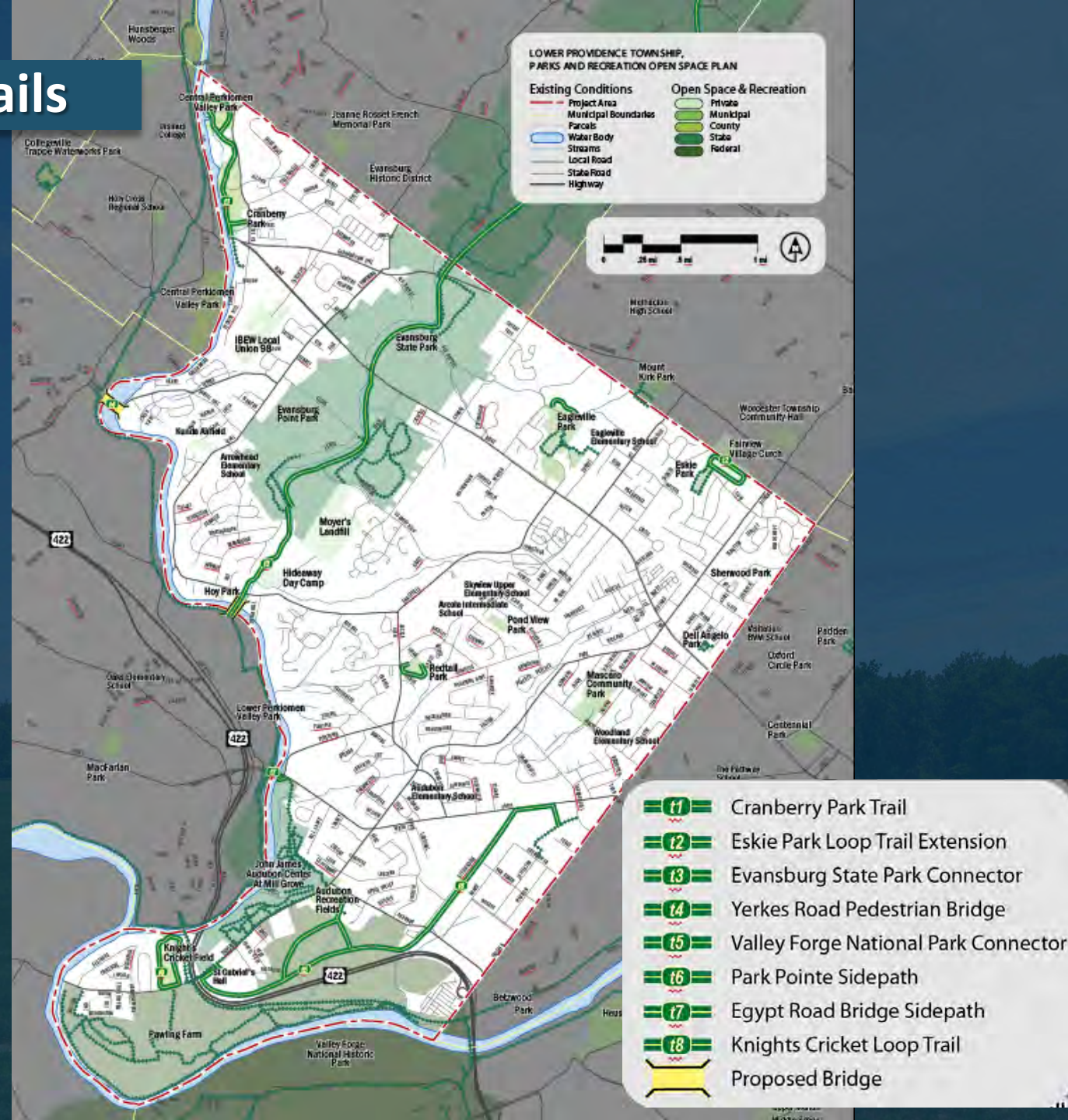
Existing Sidewalks & Gaps



Bike Montco Routes



Proposed Off Road Trails



Trail:

Eskie Park Loop Trail Extension

.65 Miles (1.1 Miles in total)



Trail: Eskie Park Loop Trail Extension - Existing



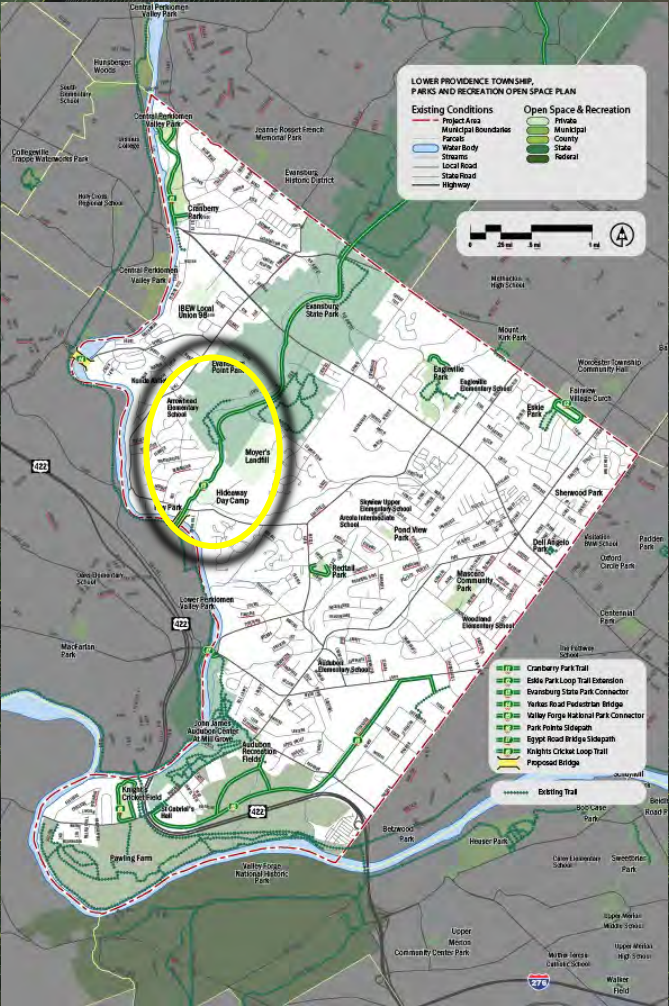
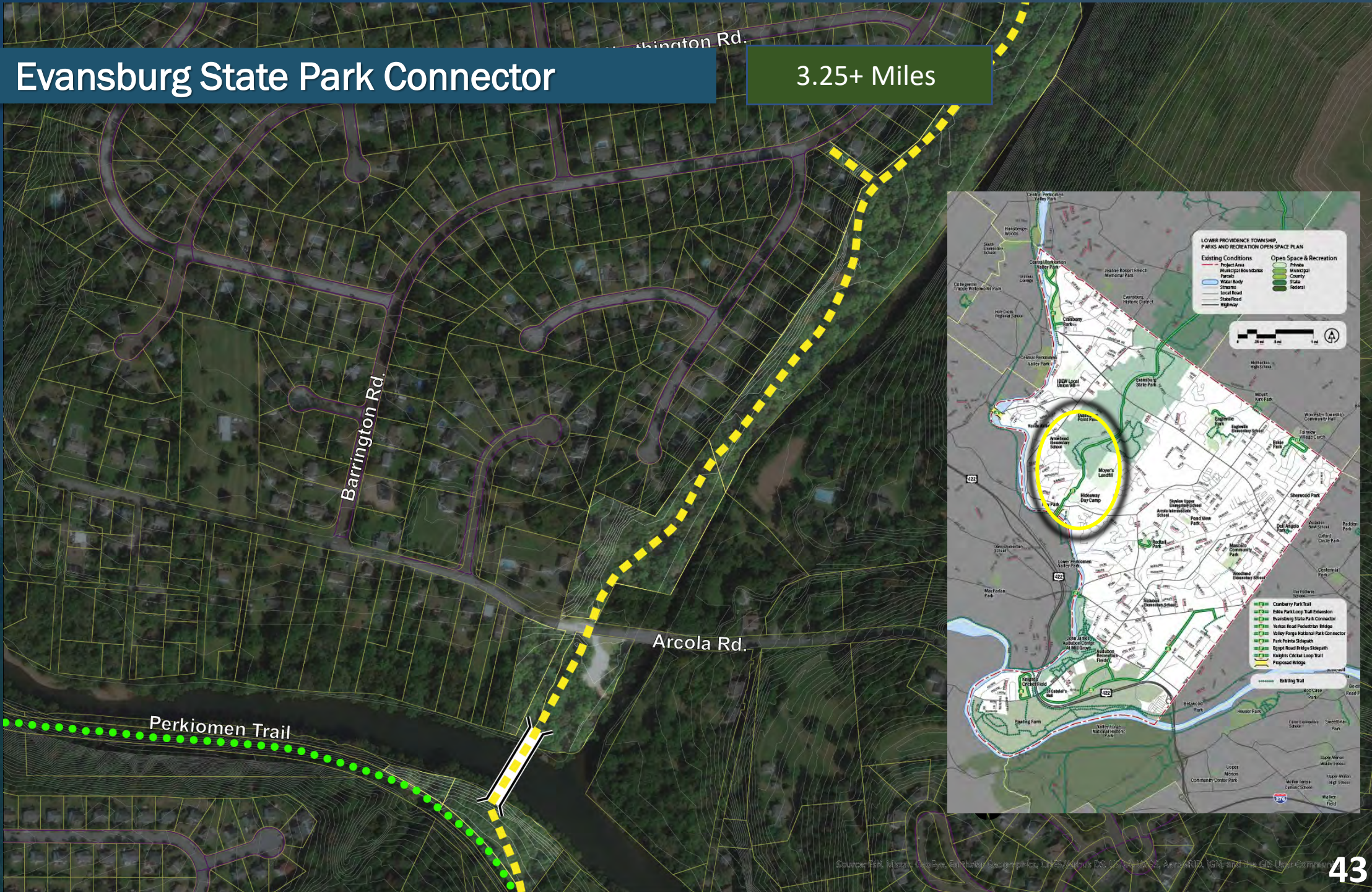
Trail: Eskie Park Loop Trail Extension - Proposed



Trail:

Evansburg State Park Connector

3.25+ Miles



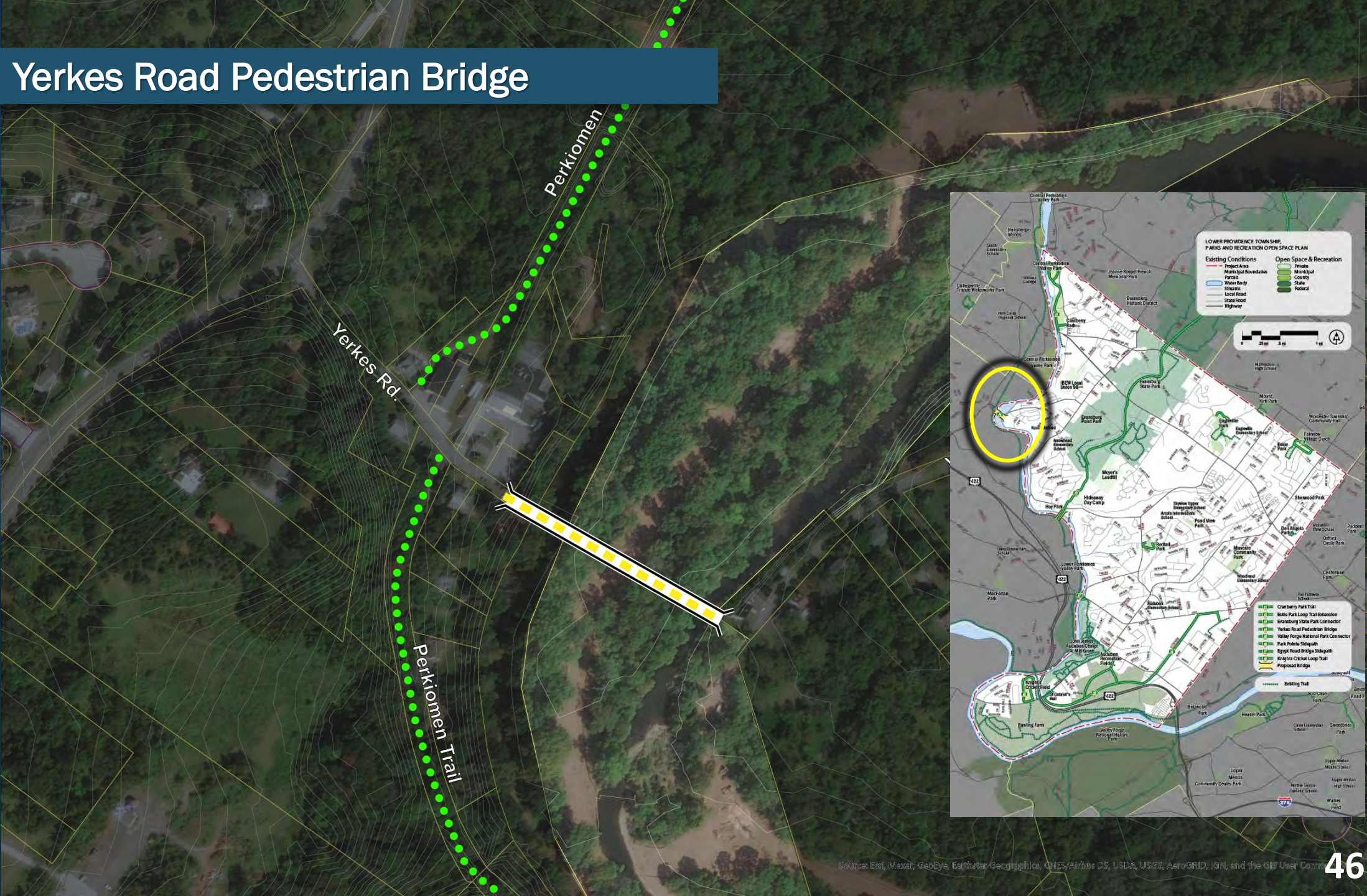
Trail: Evansburg State Park Connector - Existing



Trail: Evansburg State Park Connector - Proposed

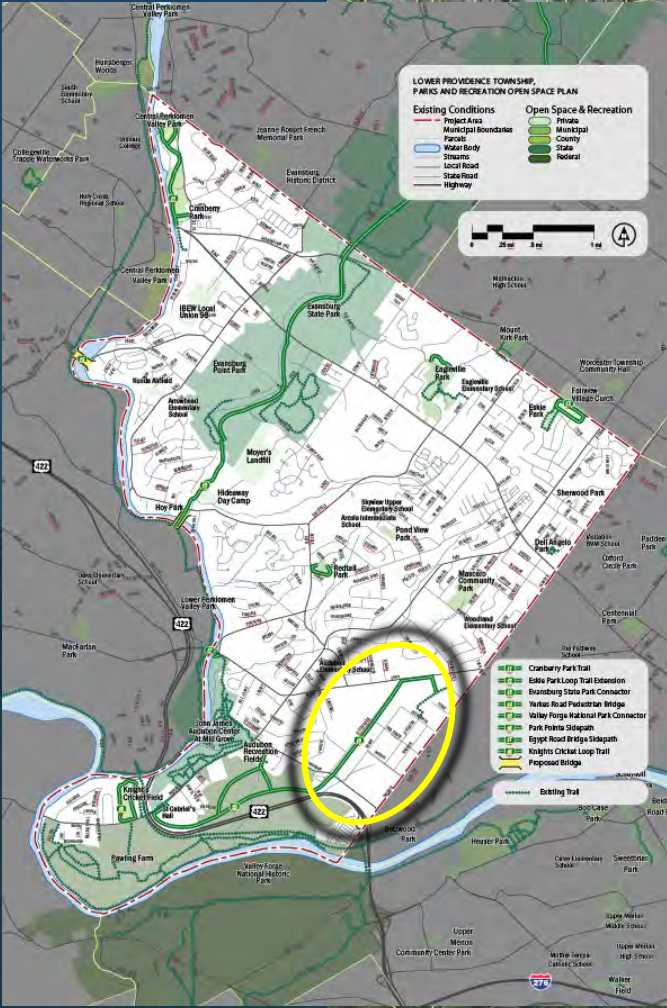


Trail: Yerkes Road Pedestrian Bridge



Trail: Park Pointe Sidepath

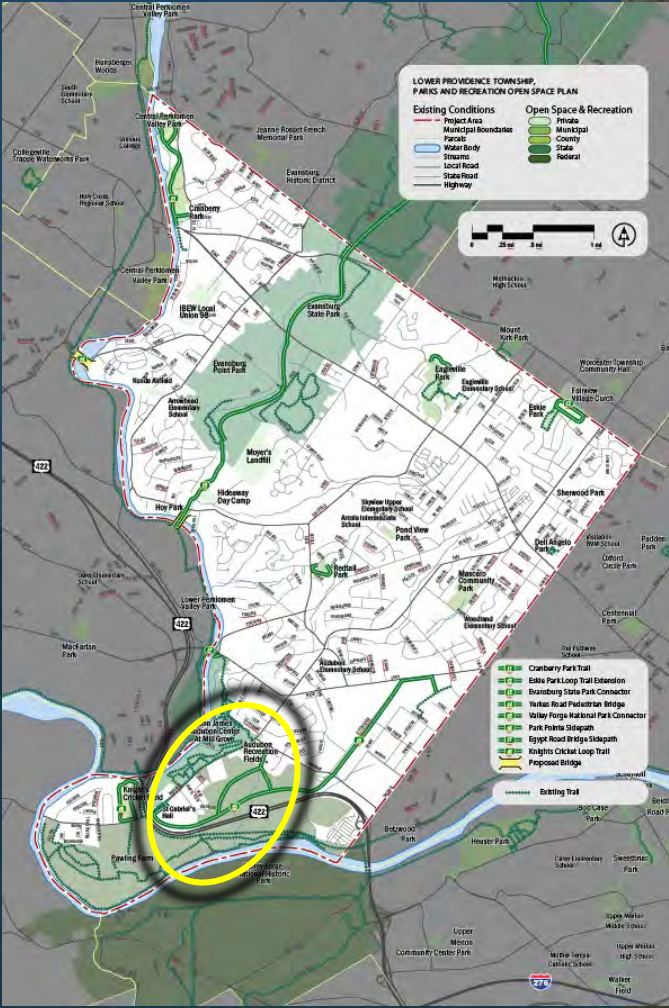
1.4 Miles



Connects to Valley Forge



Trail: Valley Forge Connector



Trail: Egypt Road Bridge - Existing



Trail: Egypt Road Bridge - Proposed

- Widen sidewalk to 8' in width, with barrier
- Reduce 12' lanes to 11'
- Reduce Shoulder width
- Water Trail access
- Small parking lot



Maintenance & Programming

Recreation Programming Opportunities

- Improve offerings by providing year-round activities
 - Community has noted desire for additional programming
- Indoor facilities are needed for an enhanced programming schedule
 - Current facilities do not permit for increased programs
- Create or increase partnerships (schools, county, private facilities, M.O.U.'s)
 - Schools are used in the summer; expand to include year-round through new partnerships
- Programs are well received, but we need to “climb the ladder” and register for more activities
 - Currently, there are limited spaces for fall, winter and spring locations to offer programs



Maintenance & Programming

Financial Structure

- Additional revenues will be realized if/when additional programs are introduced
- **Sound practice is in place for fee determination; Assess need to reevaluate fees to determine if they are adequate**
- New programs may take a year or two to become profitable

Maintenance Practices

- Opportunities exist for increased park amenities

Risk Management

- Consumer Product Safety Commission guidelines
- ADA compliance
- **DVIT performs annual park review**

Administrative Actions

- **Administration is run very well**
- **Consider 2 seasonal maintenance employees who report directly to Parks & Rec Director**
- **Provide for learning opportunities for maintenance and admin staff**



Priority Recommendations

Facility, Multimodal & Maintenance Recommendations

Priorities for plan recommendations have been organized by short, medium, and long-term priorities.

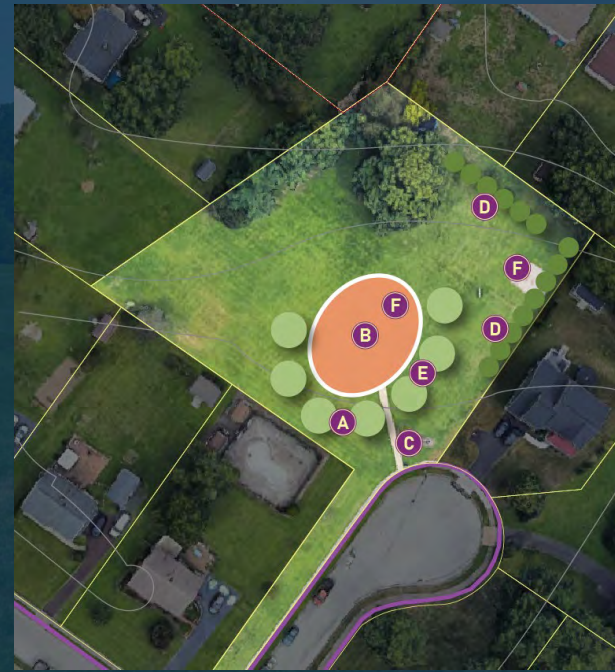
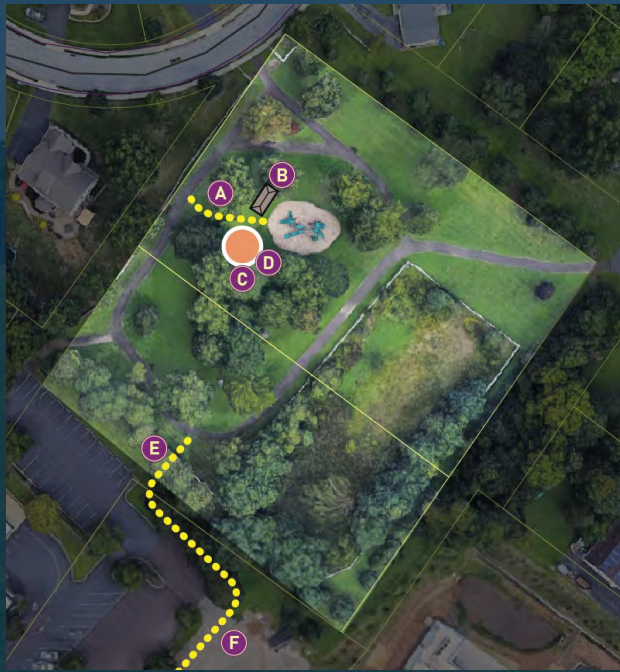
Priorities may shift depending on available grant funding and Township priorities.



Cost Estimates - Facilities

Estimated Park Facility Improvement Costs:

Total Proposed Facility Improvements	\$ 3,936,005
Mobilization (2%)	\$ 78,720
Construction Surveying (1%)	\$ 39,360
Erosion and Sedimentation Control (1.5%)	\$ 59,040
Storm Water Management (5%)	\$ 196,800
Construction Contingency (10%)	\$ 393,601
Design and Engineering (10%)	\$ 393,601
Total Estimated Project Costs	\$ 5,097,126



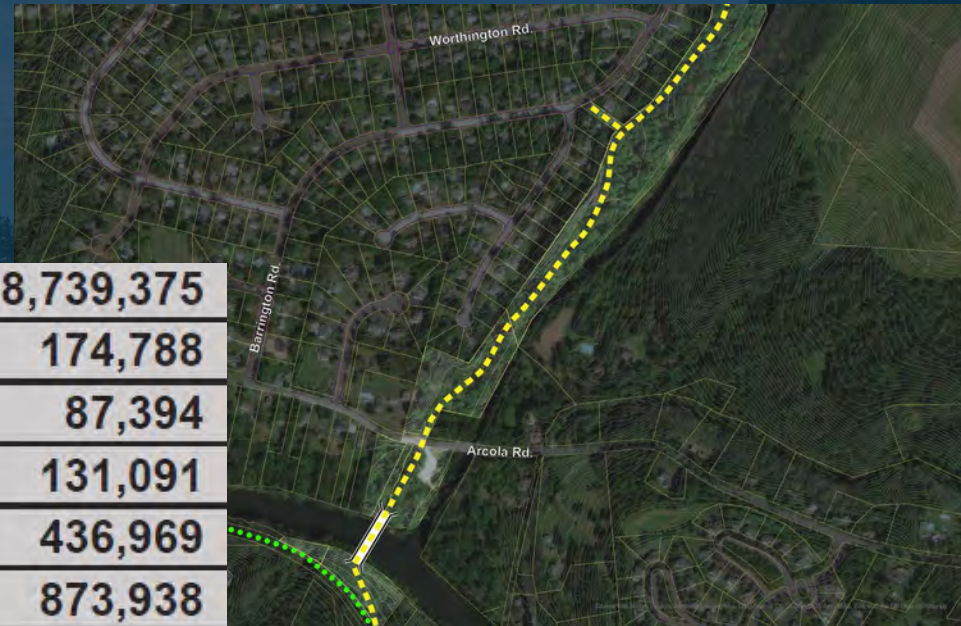
Cost Estimates – Multimodal

Sidewalk Improvements: \$2,886,296

Bike Lanes: \$1,606,292

Multi Use Trails: \$6,824,903

*Separate studies required for feasibility of Perkiomen bridge crossing alternatives.



Total Proposed Facility Improvements	\$	8,739,375
Mobilization (2%)	\$	174,788
Construction Surveying (1%)	\$	87,394
Erosion and Sedimentation Control (1.5%)	\$	131,091
Storm Water Management (5%)	\$	436,969
Construction Contingency (10%)	\$	873,938
Design and Engineering (10%)	\$	873,938
Total Estimated Project Costs	\$	11,317,491

Next Steps

- All draft report comments incorporated into the final plan which will be published July 22, 2021

Next steps after final plan is published:

- Adoption by Board of Supervisors
- Develop funding strategies for priority projects, pursue grant funding (Local, State, Federal sources)

Contact Information:

**SIMONE COLLINS LANDSCAPE
ARCHITECTURE** - 610.239.7601

Peter Simone, RLA, FASLA, Principal

psimone@simonecollins.com

Pankaj Jobanputra, AICP, Project Manager

pjobanputra@simonecollins.com

**Geoff Creary, Land. Arch., Connectivity Expert
/ Graphics**

gcreary@simonecollins.com

Joseph Wallace, Staff Landscape Architect

jwallace@simonecollins.com

Michelle Armour, Staff Landscape Architect

marmour@simonecollins.com