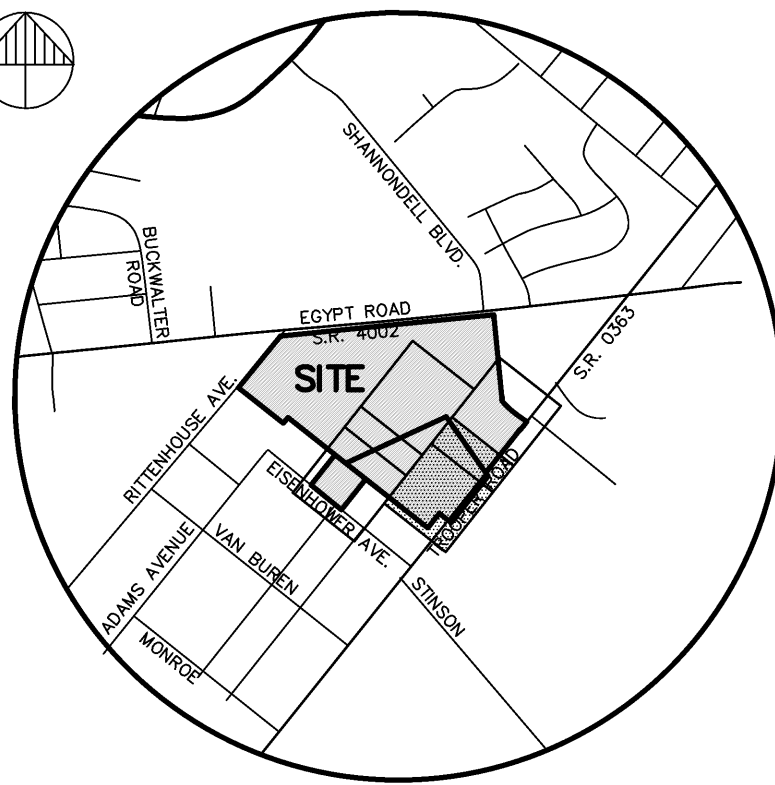
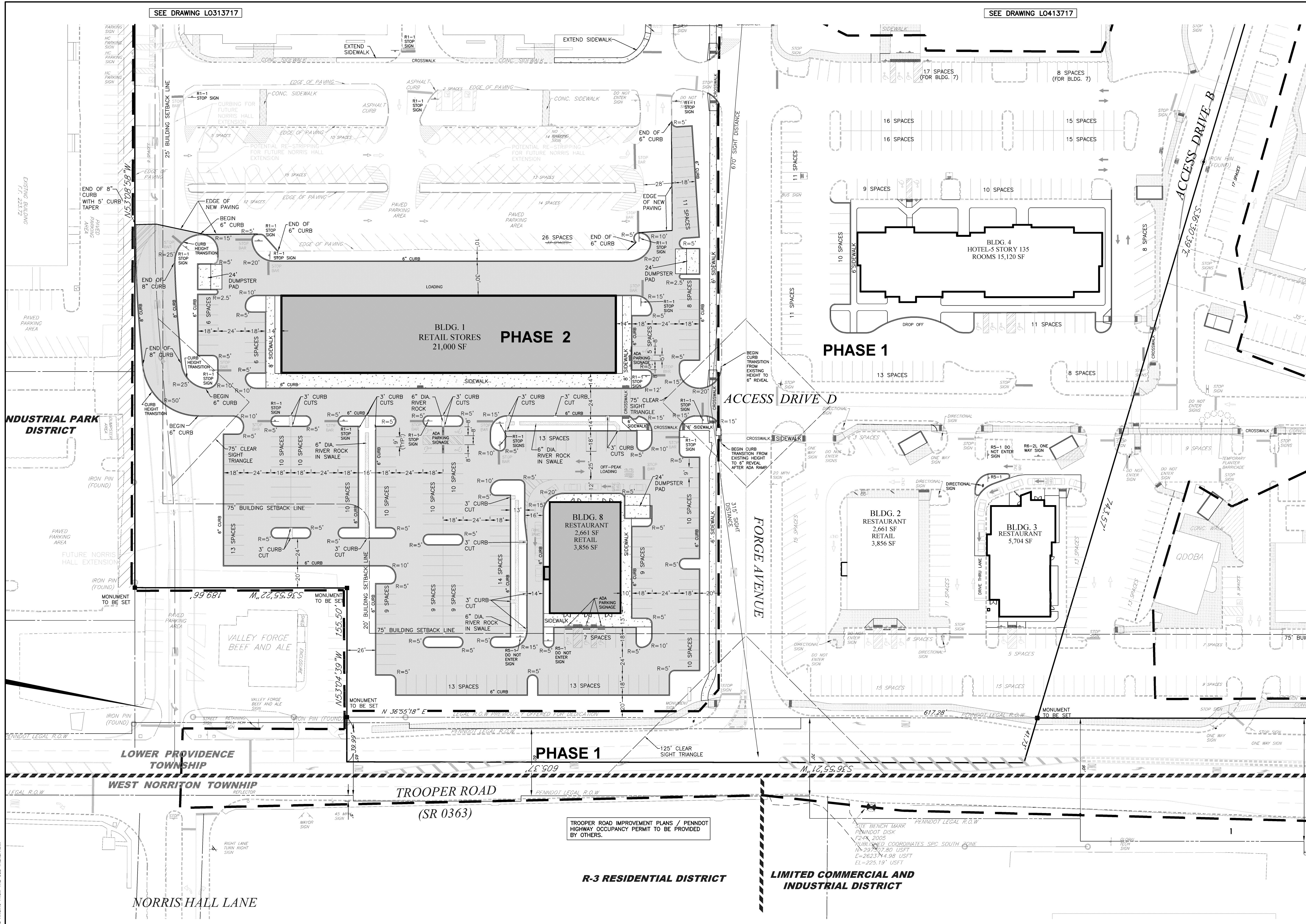


© COPYRIGHT BURSICH ASSOCIATES, INC. 2018  
ALL RIGHTS RESERVED. NO PART OF THIS DOCUMENT MAY BE REPRODUCED OR TRANSMITED IN ANY FORM OR BY ANY MEANS, ELECTRONIC OR MECHANICAL, INCLUDING PHOTOCOPYING, RECORDING, OR BY ANY INFORMATION STORAGE AND RETRIEVAL SYSTEM, WITHOUT THE EXPRESS WRITTEN CONSENT OF BURSICH ASSOCIATES, INC. ANY REUSE OF THIS DOCUMENT FOR ANY PURPOSE OTHER THAN THAT AUTHORIZED BY BURSICH ASSOCIATES, INC. IS STRICTLY PROHIBITED. ANY REUSE OF THIS DOCUMENT FOR ANY PURPOSE OTHER THAN THAT AUTHORIZED BY BURSICH ASSOCIATES, INC. SHALL BE AT THE USER'S SOLE RISK. BURSICH ASSOCIATES, INC. SHALL NOT BE RESPONSIBLE FOR ANY DAMAGES, LOSSES AND EXPENSES ARISING FROM THE USE THEREOF.



LOCATION KEY MAP  
SCALE: 1" = 2000'

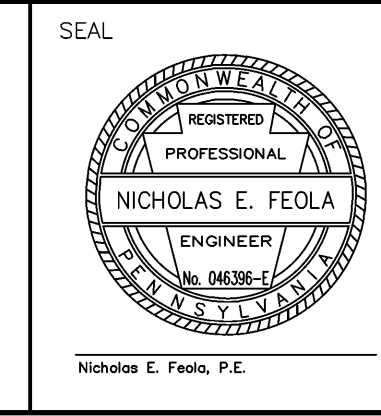
- EXISTING FEATURES LEGEND**
- CONCRETE MONUMENT FOUND
  - IRON PIN FOUND
  - PROPERTY LINE
  - ADJOINER LINE
  - LEGAL RIGHT OF WAY
  - EASEMENT LINE
  - EDGE OF PAVEMENT
  - CURB
  - CURB TO BE REMOVED
  - EDGE OF GRAVEL
  - SIDEWALK
  - ASPHALT TRAIL
  - ADA ACCESSIBLE PARKING SPACE
  - ZONING LINE
  - SLANTED TEXT DENOTES EXISTING FEATURE

- PROPOSED LEGEND**
- BUILDING SETBACK LINE
  - EDGE OF PAVING
  - CURB
  - PAVEMENT
  - POROUS PAVEMENT
  - CONCRETE
  - BUILDING
  - ADA ACCESSIBLE PARKING SPACE
  - ADA RAMP
  - ADA DETECTABLE WARNING STRIP
  - 24" STOP BAR
  - PHASE LINE
  - VERTICAL TEXT DENOTES PROPOSED FEATURE



SHEETS 1, 8, 9, 10, 12 AND 13  
TO BE RECORDED TOGETHER

NO.	REVISION	DATE	BY	APP.



MANAGER	KRK
DESIGN	KRK
DRAFT	AK
FILE	AUD-01
NOTES	
DATE	JUNE 13, 2018
SCALE	AS SHOWN

**BURSICH**  
Sharing your Vision

Corporate Headquarters  
2129 East High Street  
Pottstown, PA 19464  
610-323-4040

Southampton Office  
706 Lakeside Drive  
Southampton, PA 18966  
215-364-2520

[www.bursich.com](http://www.bursich.com)

CLIENT  
AUDUBON LAND DEVELOPMENT CORPORATION  
2620 EGYPT ROAD  
NORRISTOWN 19403

LAYOUT PLAN	SUBJECT	JOB NO.
		013717-12
		SHEET NO.
		10 OF 61
		DWG. NO.
		L0113737

LOWER PROVIDENCE TWP, MONTGOMERY CO, PENNSYLVANIA